



41P11SW0247 23 ASQUITH

010

DIAMOND DRILLING

TOWNSHIP: Asquith

REPORT No.: 23

WORK PERFORMED BY: Timmins Gold Resources Ltd.

<u>CLAIM No.</u>	<u>HOLE No.</u>	<u>FOOTAGE</u>	<u>DATE</u>	<u>NOTE</u>
L 507641	XPO2A	141.0	Mar/82	(1)
L 446557	XPO3	247.0	Apr/82	(1)
	XPO3A	110.0	Apr/82	(1)
	XPO4	291.0	Feb/82	(1)
L 512387	XPO5	254.0	Apr/82	(1)
	XPO8	252.0	May/82	(1)
	STA-1	258.0	May/81	(1)
	STA-2	271.0	May/81	(1)
L 512315	STS-2	517.0	Sept/81	(1)
	STI-2	156.0	Mar/81	(1)

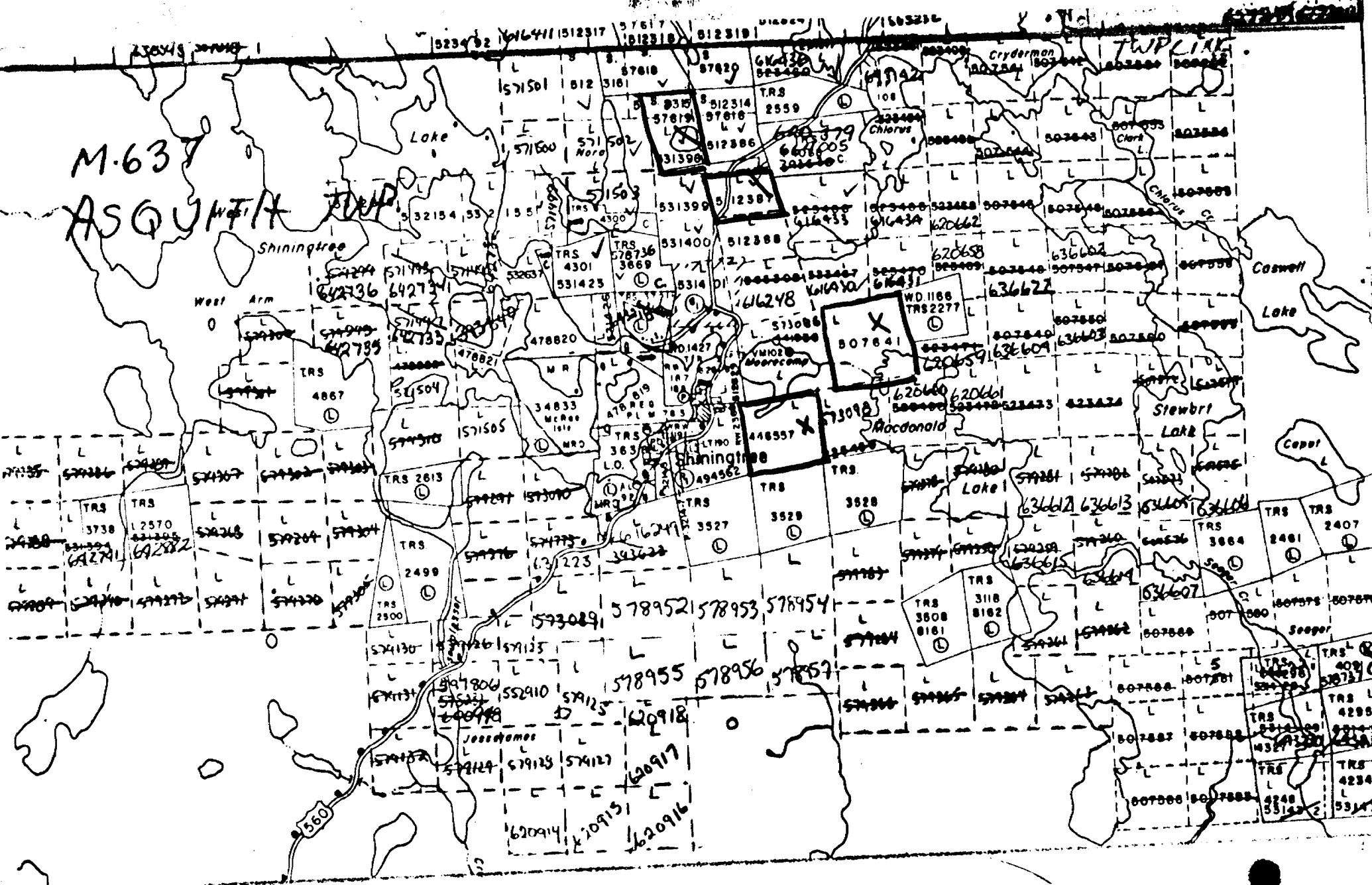
10 DDH

2497.

NOTES: (1) #390-82

M.637

ASQUITH TWP.



L12E

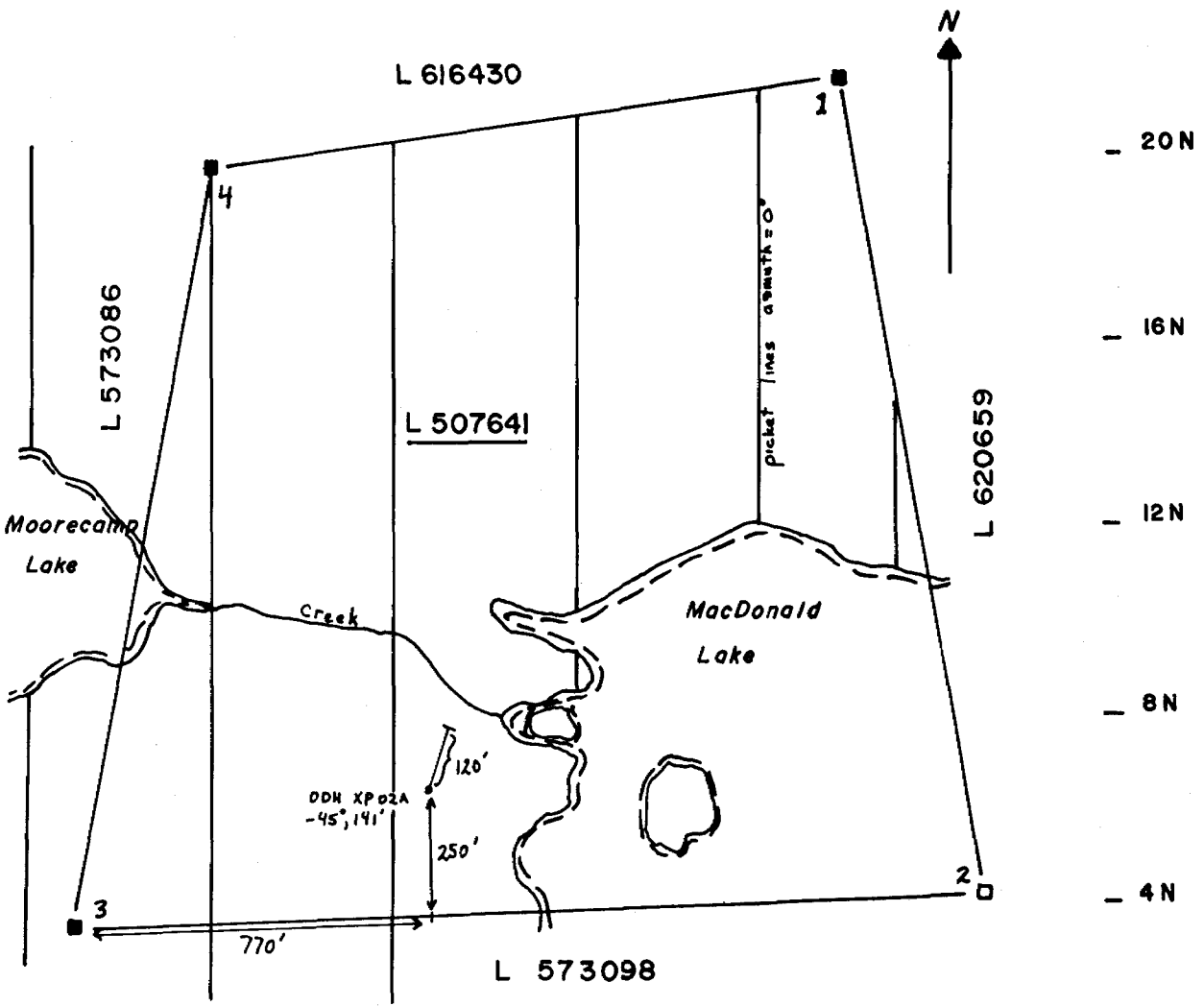
L16E

L20E

L24E

L28E

L31E



SCALE  
1" to 400'

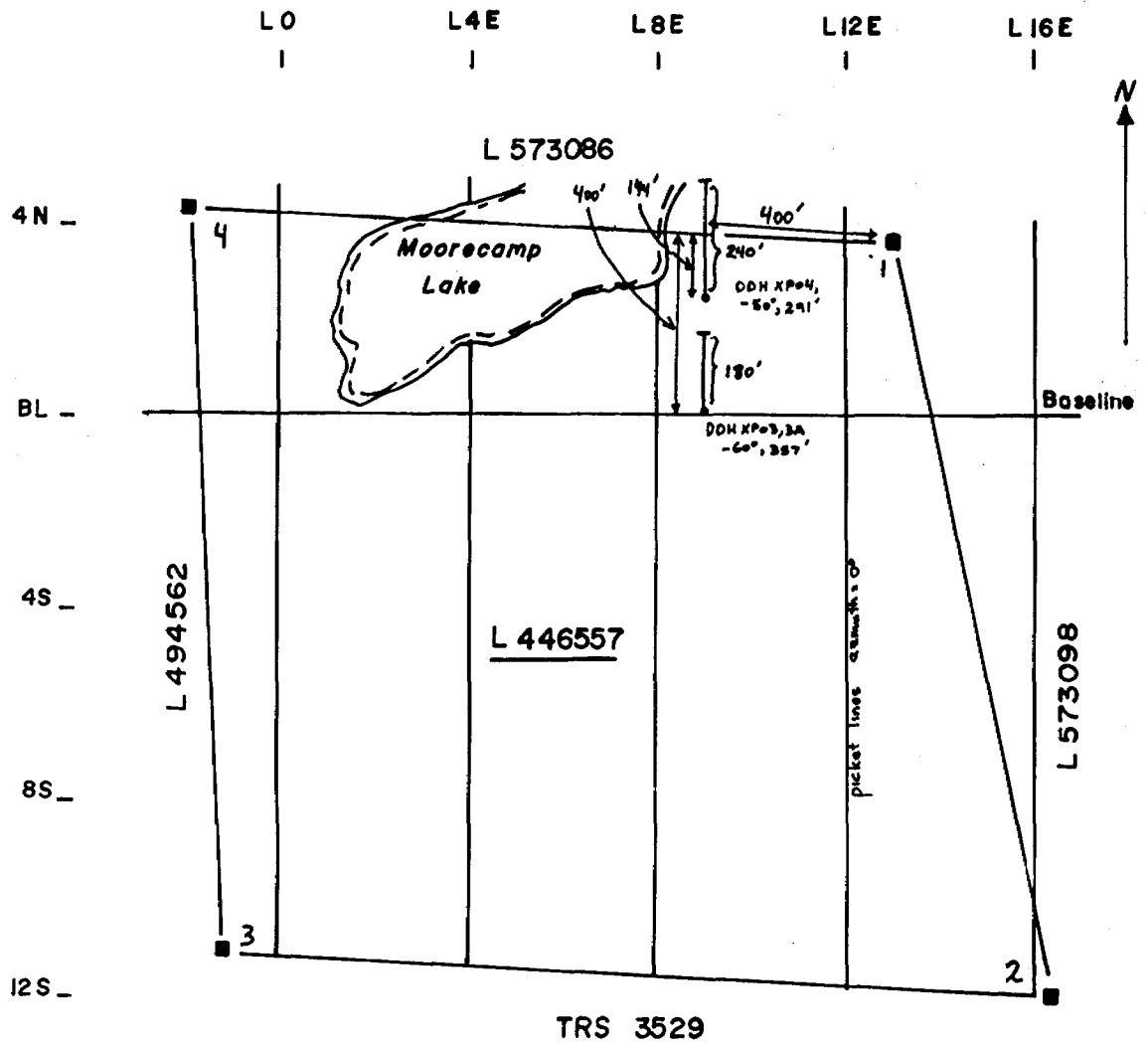
Location Sketch  
Diamond Drill Hole  
XP-02A

ASQUITH-CHURCHILL Township, Ont.



FOOTAGE		DESCRIPTION	GRADE ESTIMATE	SAMPLE NO.	FOOTAGE			ASSAYS				RECOVERY	
FROM	TO				FROM	TO	LENGTH					RUN	SHORT
82.0	112.0	ANDESITE TUFFS											
		Light green colour, moderately bedded, f.g. andesite tuffs, slightly schistose. The tuffs are slightly sheared											
		Alteration - moderately to highly carbonatized and moderately to strongly sericitized throughout entire section											
		Quartz veining - dk grey qtz - pervassive throughout most of tuff section associated with pyrite. Veining at 70-80° to CA.											
		Schistosity - 60° to CA.											
		@ 82-87' tuff - coarse tuffs with 5-10% minute qtz-cbt veinlets pervassive throughout section, minor pyrite < 1%											
		@ 92-94' - 40-50% dk-grey qtz veining w.1-3% py - 70 to CA											
		@ 95-97' - 20-25% qtz veining + cbt veining with 2% py qtz veining is barren of sulphides.											
		@ 99' - 4" dk grey qtz veining											
		@ 101-102 - 40% dk grey quartz veining with 2-3% pyrite present plus abundant sericite.											
		Contact with coarse andesite flows - flow contact (chilled) and sharp with fine grained andesite near contact and increasing away from contact.											
112.0	141.0	ANDESITE FLOWS											
		Generally light to medium green colour, f.g.-m.g. (near contact) andesite flows, rather homogeneous with few flow features											
		Alteration - slight-chloritization - generally fairly hard											
		Subophitic textures in thicker part of flow - massive qtz veining 1-2%, trace pyrite.											
		@ 119-121' - 10-15% qtz veining, 0-20' to CA minor 1% pyrite											
		@ 138-140 - 8% qtz veining minor 1% pyrite											
141.0		END OF HOLE											

*Peter Bon*



SCALE  
1" to 400'

Location Sketch  
Diamond Drill Holes  
XP-03,3A and XP-04

Asquith Township, Ont.











FOOTAGE		DESCRIPTION	GRADE ESTIMATE	SAMPLE NO.	FOOTAGE			ASSAYS					RECOVERY	
FROM	TO				FROM	TO	LENGTH							RUN
		chlorite veins and white quartz veins, crosscutting it. The upper and lower contact is sharp with both bounded by qtz-veins. Sulphides - 1-2% pyrite throughout.												
251.0	253.3	QUARTZ VEIN Quartz vein, medium to light grey colour, fractured with minor chlorite veinlets + 1-3% pyrite + some sericite alteration. Slightly sheared at the lower contact about 60° to CA.												
253.3	307.7	ANDESITE - pillowed flows Fine-grained, light to medium green coloured andesite - pillowed flows, slightly schistose, inhomogeneous Alteration-moderate chlorite but strongly carbonatized Also minor interflow - sediments Quartz veining - 2-6% at 40 to 60° to CA Generally < 1% sulphides - pyrite  @ 270-275' cbt andesite with 20% qtz-cbt veining - a particularly fractured section of andesite												
307.0	318.0	TUFFS Light green-grey colour, well bedded - mm-scale - 70° to CA fine grained, andesite - dacite composition Alteration-strongly carbonatized + sericitized + variable chlorite Sulphides - remobilized pyrite along schistosity up to 5-10% over 2-3% (local) Veining - predominately dark carbonate + also dark grey quartz veins - about 20% over entire section 40% locally over a 1' section												
318.0	335.0	ANDESITE Light to medium green fine-grained andesite flows Strongly carbonatized and slightly schistose Veining - 2-5% qtz veining throughout section especially @ 321-326 - 20% vein material (qtz) sulphides - 1% pyrite throughout												
335.0		END OF HOLE												

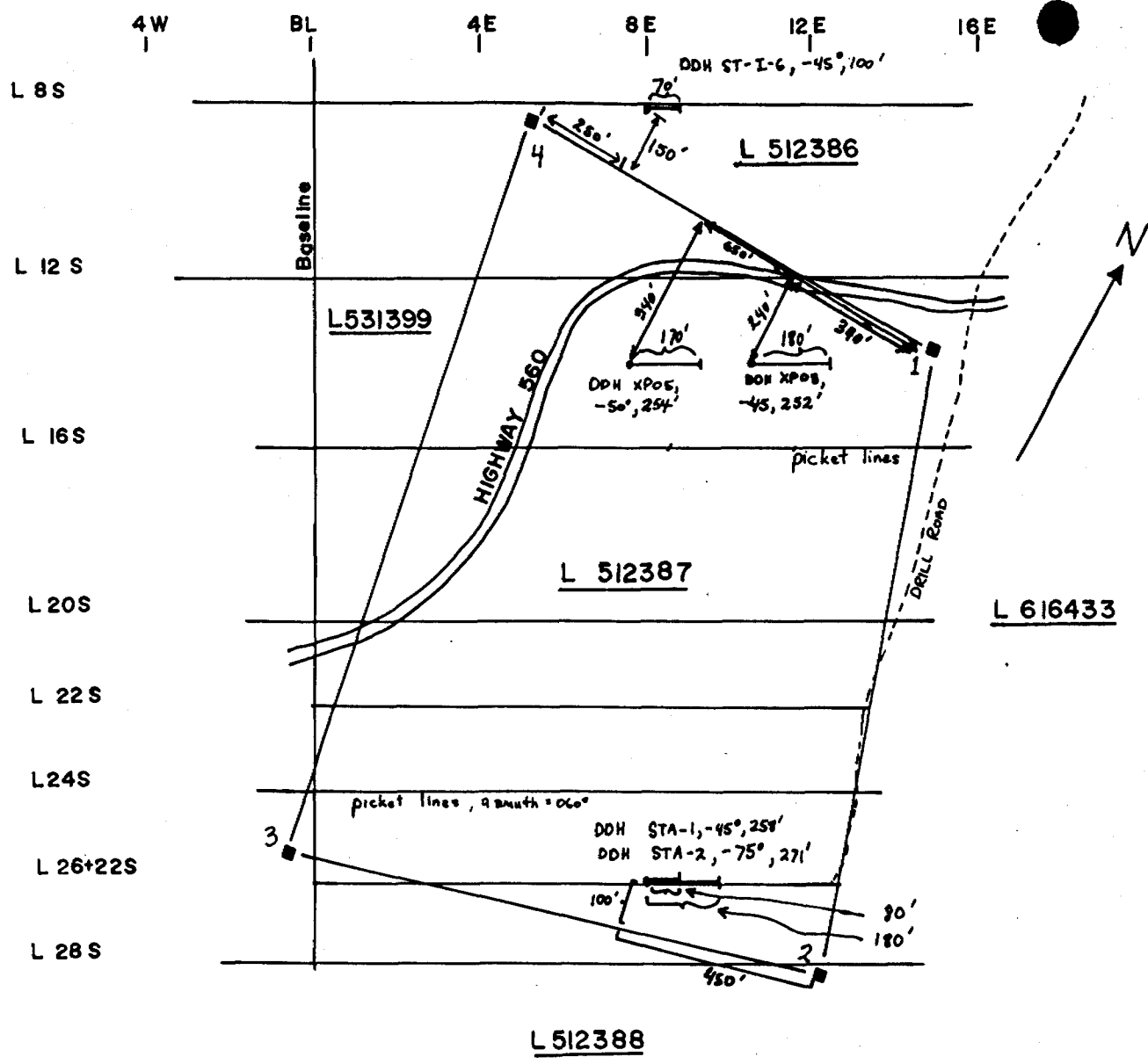
*Reth Bonu*











SCALE  
1" to 400'

Location Sketch  
Diamond Drill Holes  
STA-1, STA-2, ST-1-6,  
XPO5, XPO8

Asquith Township, Ont.











FOOTAGE		DESCRIPTION	GRADE ESTIMATE	SAMPLE NO.	FOOTAGE			ASSAYS					RECOVERY	
FROM	TO				FROM	TO	LENGTH							RUN
		(219-252) Medium to light gray-green colour, medium grained flows. Alteration - not carbonated and not very altered - only slightly hematized. Probably coarse flows with some flow banding/schistosity in some places. Alternatively might be diabase sill/dyke but no intrusive contacts. Homogeneous massive/unit. Carbonate veining - 1%, little sulphides - 1% py @ 246-247 - 25% cbt veining + 1% py, 0-20° to CA.												
252	END OF HOLE													

*Handwritten signature/initials*













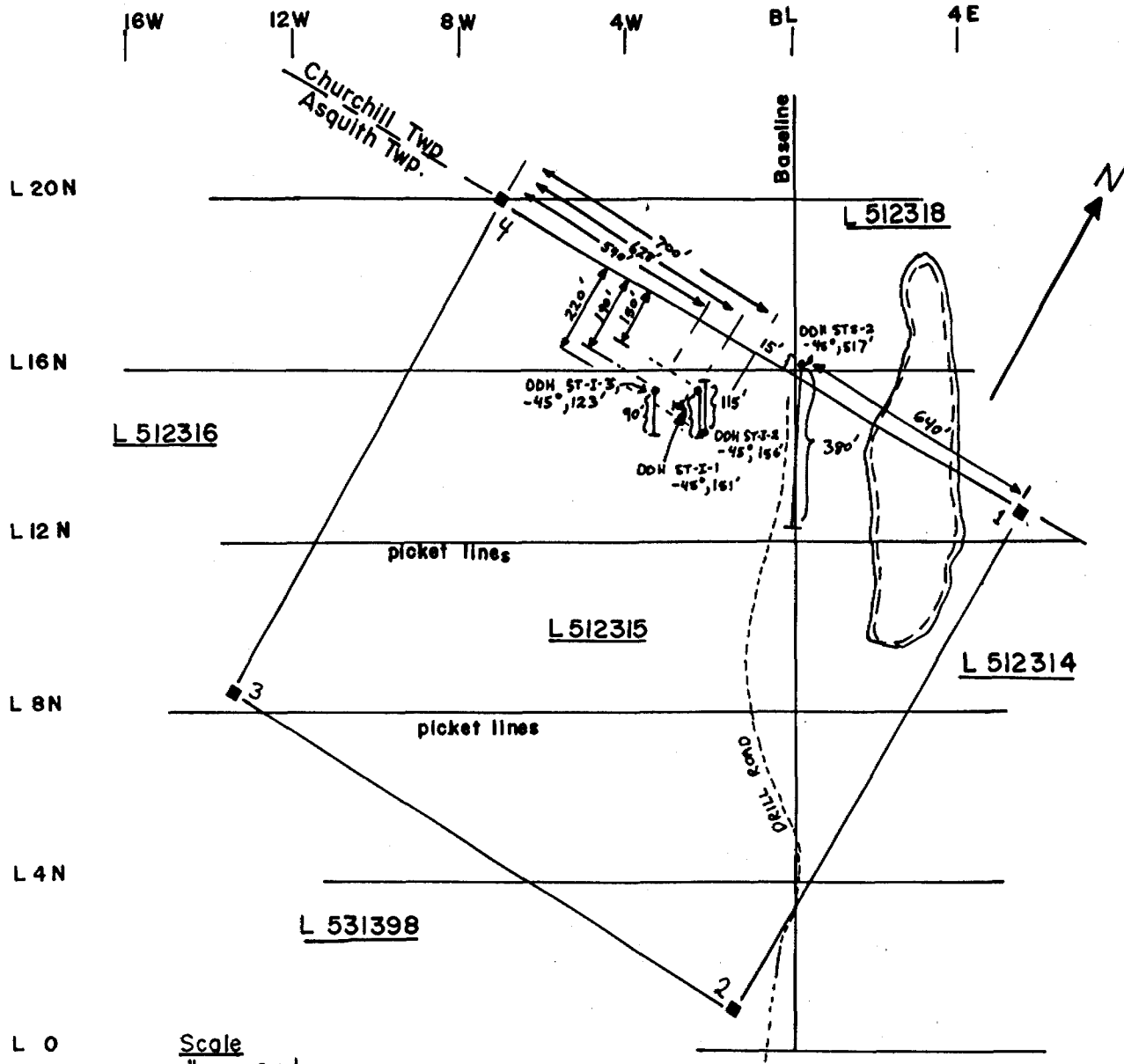












Scale  
1" to 400'

Location Sketch  
Diamond Drill Holes  
ST-2, ST-I-1,  
ST-I-2, ST-I-3  
Asquith Twp. Ont.















FOOTAGE		DESCRIPTION	GRADE ESTIMATE	SAMPLE NO.	FOOTAGE			ASSAYS					RECOVERY	
FROM	TO				FROM	TO	LENGTH							RUN
		minor cpy associated with qz veining, minor hm veinlets												
446	517	Talcosse Mafic Komatiite/Mg-Rich Basalts												
		Rock becomes more homogeneous massive talcosse nature black colour 1-2% hairline fractures, infilled by cbt + qz minor py cubes in host												
		449-451 ground core												
		468-517 veining 10-45° to CA locally becomes med-gr sericitized and carbonated whole unit is fairly carbonated tr py along fracture planes												
	517	End of Hole												
		27 boxes												

*[Handwritten signature]*









FOOTAGE		DESCRIPTION	GRADE ESTIMATE	SAMPLE NO.	FOOTAGE			ASSAYS					RECOVERY	
FROM	TO				FROM	TO	LENGTH							RUN
	99.4-99.4	QV												
	103.5 to 126.5	lt grey altered rock f.g. massive homogeneous probably strongly seritized weakly carbonated												
	milky QV at:													
	114.5-114.7													
	115.0-115.5													
	114.5-117.6													
	118.0-118.5													
	122.5-123.4													
	minor finely disseminated py observed in groundmass specially along slip planes where rock tends to break easily py also found in hairline fractures containing minor black chlorite													
	126.5-156	altered - rhyolite looking metabasalt massive f.g. homogeneous 1-2% finely disseminated py associated with fracture planes. 2-3% carb -qz veinlet anastomosing throughout, Q-C veining at												
	133.7-134													
	149.0	5% fq py along fracture plane filled with black chl												
	150-156	slight change in nature of rock - med to f.g. still even textured - andesitic looking lt green in colour - more carbonated. ?												
156	End of Hole													

*Peter Bow*