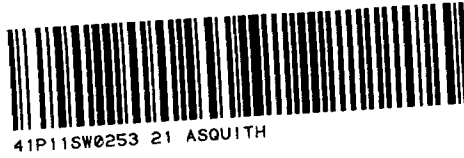


DIAMOND DRILLING



010

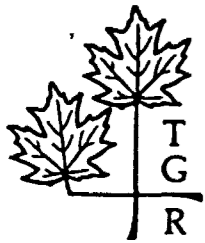
TOWNSHIP: ASQUITH

REPORT No.: 21

WORK PERFORMED BY: TIMMINS GOLD RESOURCES LTD.

<u>CLAIM No.</u>	<u>HOLE No.</u>	<u>FOOTAGE</u>	<u>DATE</u>	<u>NOTE</u>
L 512386	ST-1-6	100.0	May/81	(1)

NOTES: (1) #208-82



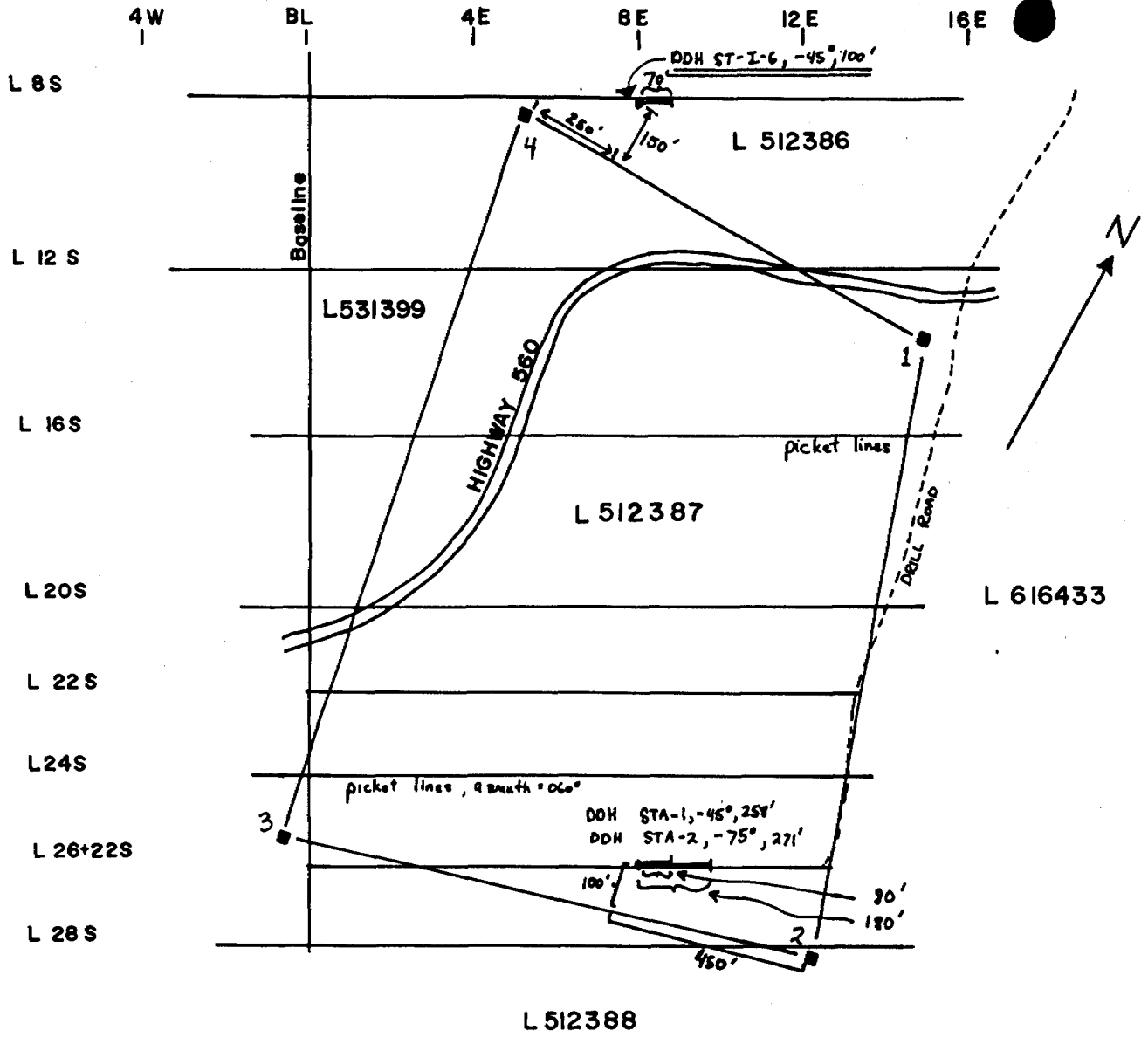
**TIMMINS GOLD
RESOURCES LTD.**

ANNETT OPTION

DIP TEST			LEVEL		ELEVATION			HOLE No. ST-I-6	
FOOTAGE	ANGLE		LOCATION L 8+00S		BEARING 055°			SHEET No. 1 of 1	
	RECORDING	CORRECTED	SECTION 8+00 E		LENGTH 100'			LOGGED BY A. Born	
			LATITUDE		CORE SIZE XRP			PURPOSE Exploration	
			DEPARTURE -45°		FINISHED May 1981			TOT. RECOVERY	

FOOTAGE		DESCRIPTION	GRADE ESTIMATE	SAMPLE NO.	FOOTAGE			ASSAYS					RECOVERY	
FROM	TO				FROM	TO	LENGTH	% CU	OZ AU	OZ AG	CU CUM. W X A	AU CUM. W X A	RUN	SHORT
0	6	OVERBURDEN												
6	86	FELDSPAR PORPHYRY - porphyry is pink coloured, medium grained with 5-15% phenocrysts with K-spar; plus groundmass of 80% feldspar (probably K-feldspar) and 10% chlorite - porphyry is of a syenitic composition - little or no quartz - 2-5% hairline fractures of black chlorite and carbonate - 2-5% finely disseminated pyrite occurs throughout the porphyry												
86	100	BASALT - generally dark grey-black in colour, fairly homogeneous, fine grained, with slight schistose alteration - moderately to slightly chloritized with minor epidote and moderately carbonatized veining - 2% quartz-carbonate veinlets, no sulphides - trace to minor (1-2%) pyrite disseminated throughout the basalt section												
100		END OF HOLE												

A. Born



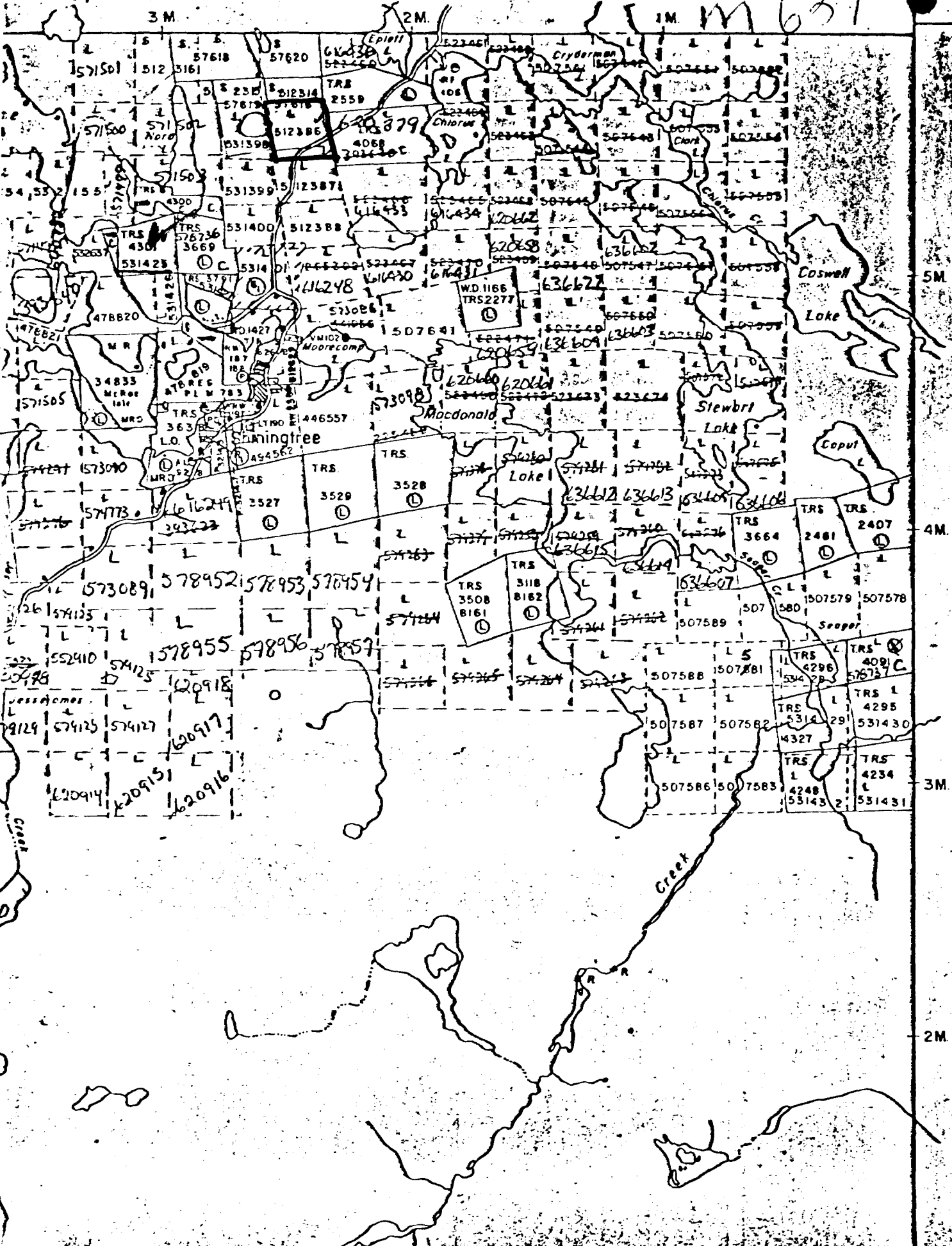
SCALE
1" to 400'

Location Sketch
Diamond Drill Holes
STA-1, STA-2, ST-1-6

Asquith Township, Ont.

Murchill Twp. - M. 719

Asquith Twp. #2000-2
M. 639



Fawcett Twp. - M. 803