

2,3954

SERVICES EXPLORATION SERVICES Enrg.
Revd

TELEPHONE: (819) 762 5498

84 RUE GATINEAU STREET
NORANDA, QUE., CANADA
J9X 1N1



41P11SW0255 2.3954 ASQUITH

010

RECEIVED

JUN 16 1981

MINING LANDS SECTION

MINES PATINO (QUE.) LTEE

GEOPHYSICAL SURVEYS

West Shining Tree

Claim Group

February 1981

L.D./

I - INTRODUCTION: Within the framework of an extensive exploration program, geophysical surveys have been carried out on the "West Shining Tree" claim group of MINES PATINO (QUE.) LTEE. during the month of December 1980.

II - PROPERTY: The property consists of 2 contiguous 40 acre claims numbered as follows: 531394 & 531395.

III - LOCATION & ACCESSIBILITY:

The said claim group is located in Asquith Twp., Ont. at an approximate distance of 4 miles due west of the town of Shining Tree, Ont.

The area is preferably accessible by Shinningtree Lake because the claim group lies immediately south of the extreme south end of the West arm of Shinningtree Lake.

IV - GEOPHYSICAL SURVEYS:

The surveys were carried out on a previously cut grid whose 1,900' long base line; located in the central part of the group, strikes in an east-west direction; cross lines occur at every 400' intervals (except X1 3W) and extend to the north to a maximum distance of 800' and to the south for a maximum distance of 550'.

Thus a total of 2.0 line miles have been cut and surveyed.

Magnetometer Survey:

An Exploranium Geometrics G-816 proton magnetometer was used for the survey; readings were taken at every 100' intervals and at every 50' intervals over anomalous areas.

Numerous narrow and short magnetic anomalies have been outlined, however no specific trends can be ascertained because of their random distribution.

Electromagnetic Survey:

A GEONICS E.M. - 16 unit was used for the survey; readings were taken at every 100' intervals and the data was submitted to the "Fraser Filter" process.

Two small conductors have been outlined: one occurs on X1 0 where it is centered at 3+50N, the other occurs on X1 12E at 1+50S.

The above conductors are short in nature and do not appear to be coincident with magnetic anomalies.

V - CONCLUSIONS & RECOMMENDATIONS:

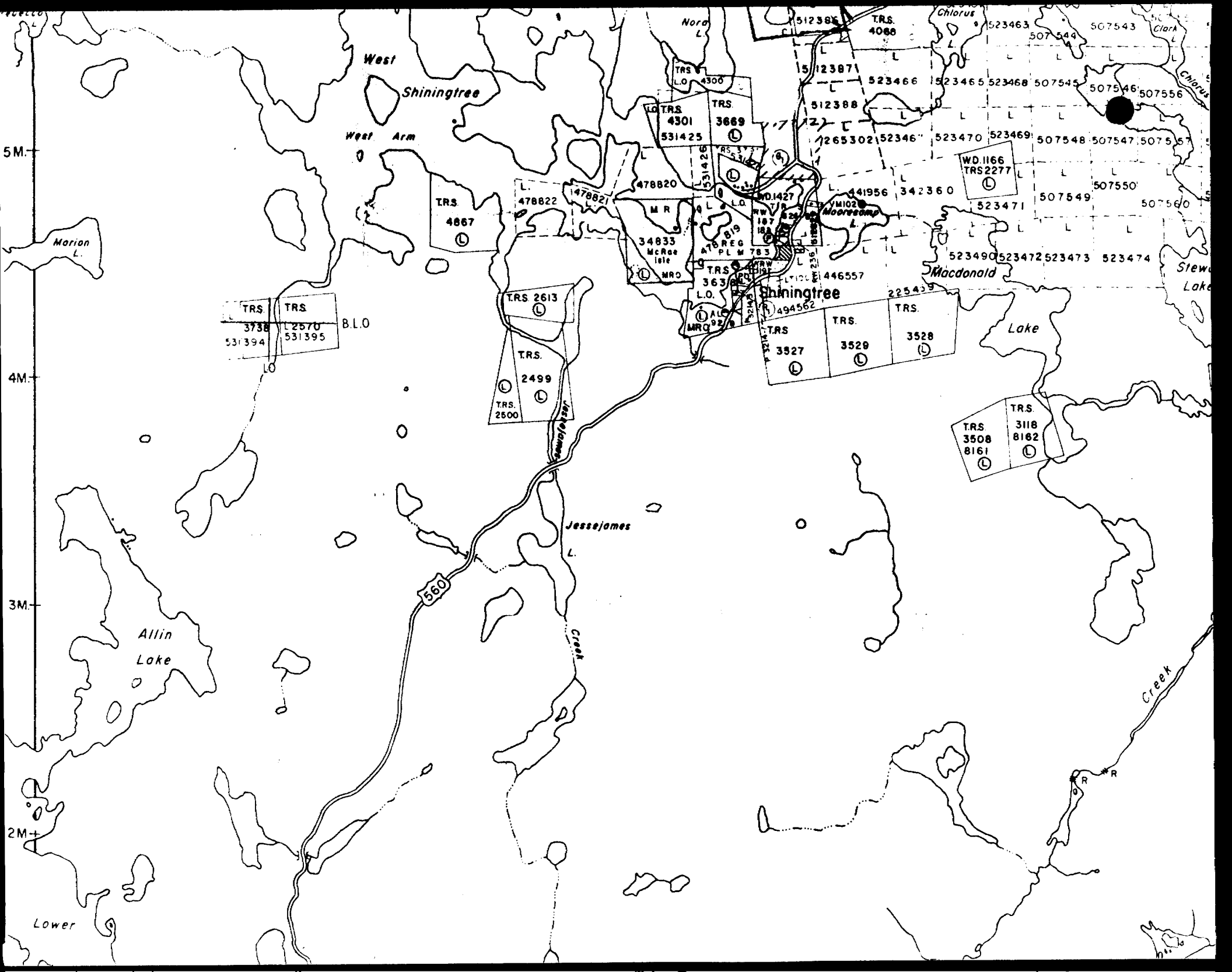
A geological survey is recommended to elucidate the data obtained from the geophysical surveys.

Respectfully submitted:

E. Chartré: 

February 15,
1981.

Handwritten note: 100' intervals



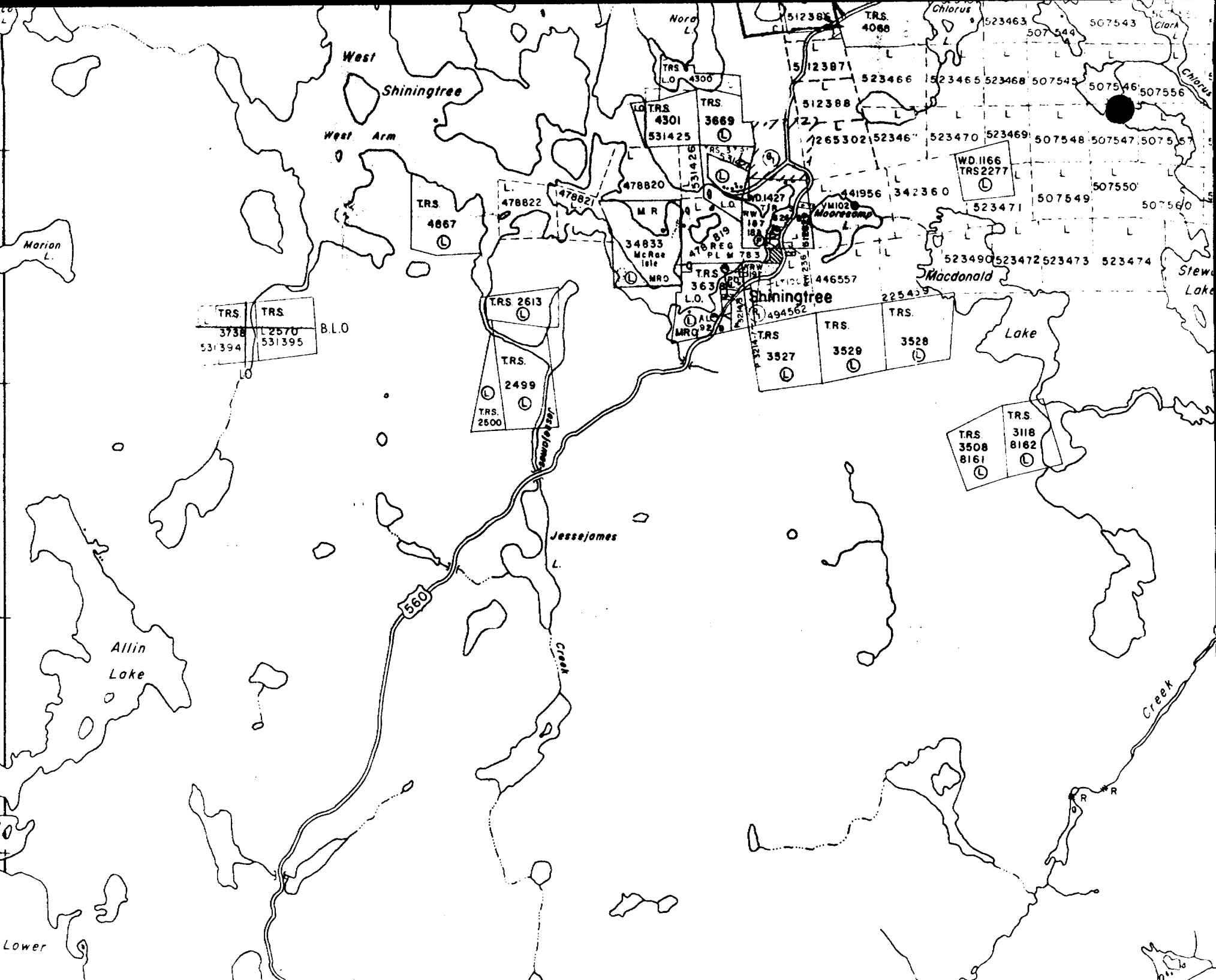
5M.

4M.

3M.

2M.

Lower



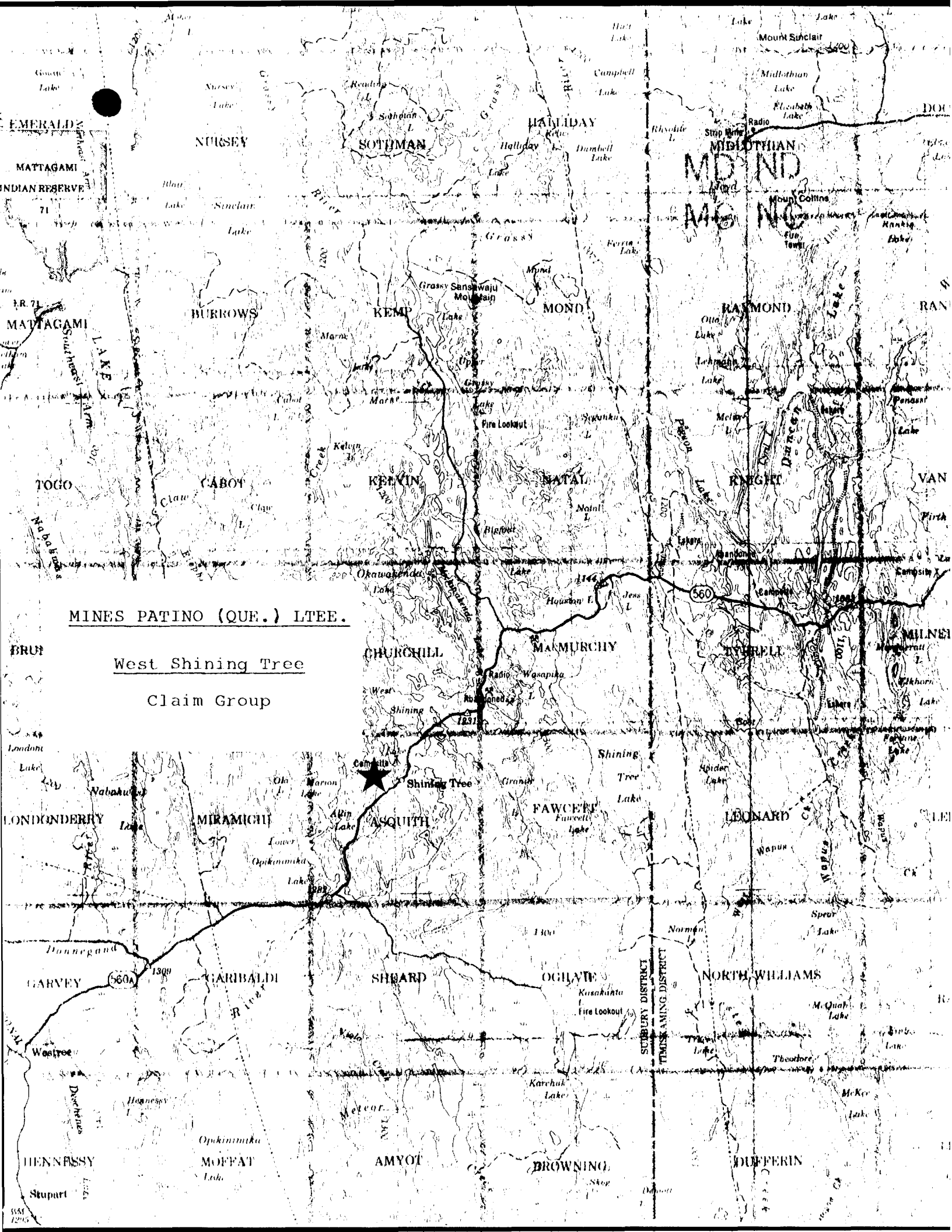
TRS TRS
3738 L2570
531394 531395

560

TRS 2613
TRS. 2499
TRS. 2500

TRS TRS TRS
3527 3528 3528

TRS TRS
3508 3118
8161 8162



MINES PATINO (QUE.) LTEE.

West Shining Tree
Claim Group

CHURCHILL

MARMURCHY

BYRELL

MILNE

ASQUITH

FAWCETT

LEONARD

SHEARD

OGLAIVE

NORTH WILLIAMS

AMYOT

BROWNING

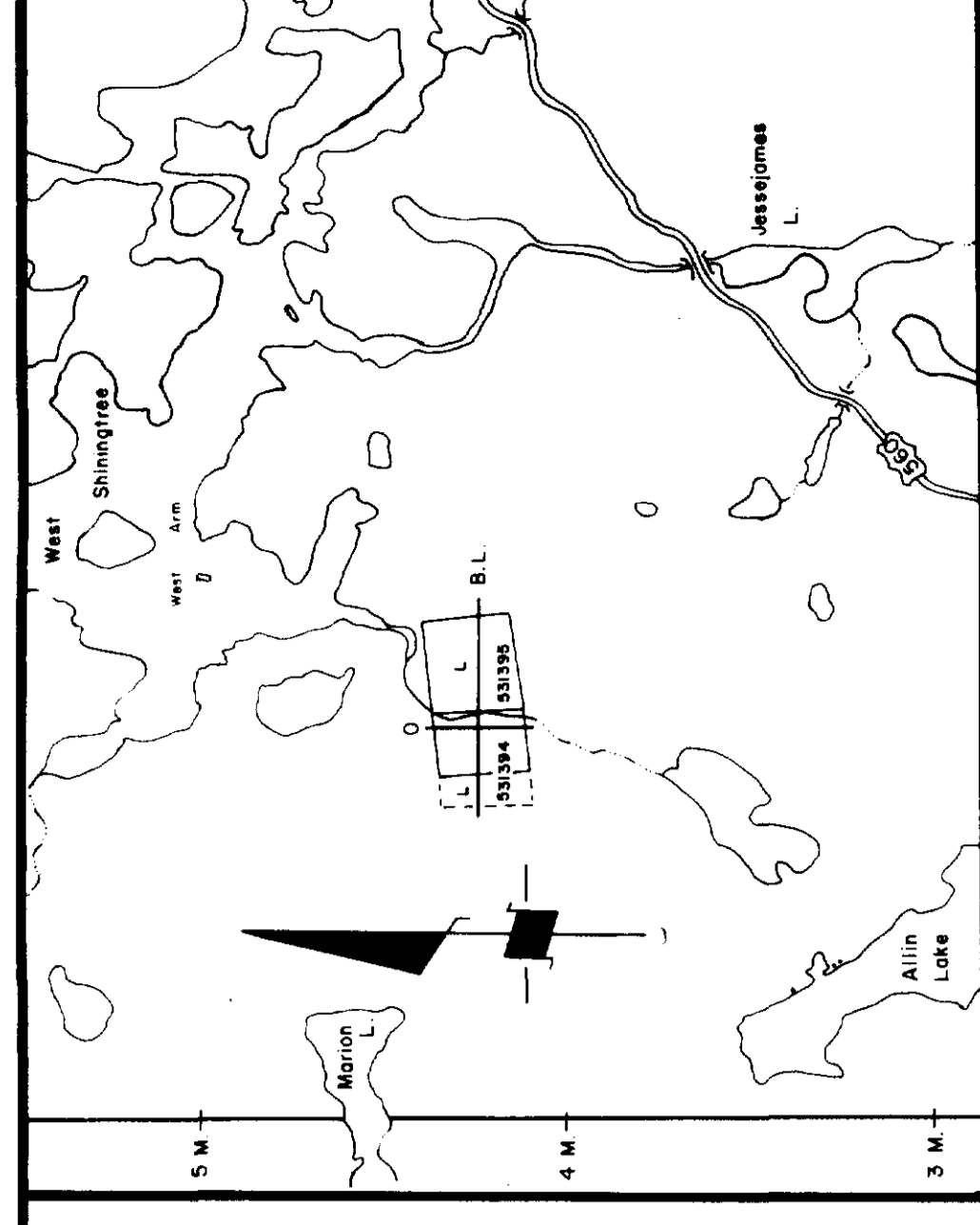
DUFFERIN

SUBURBY DISTRICT
TIMES AMING DISTRICT

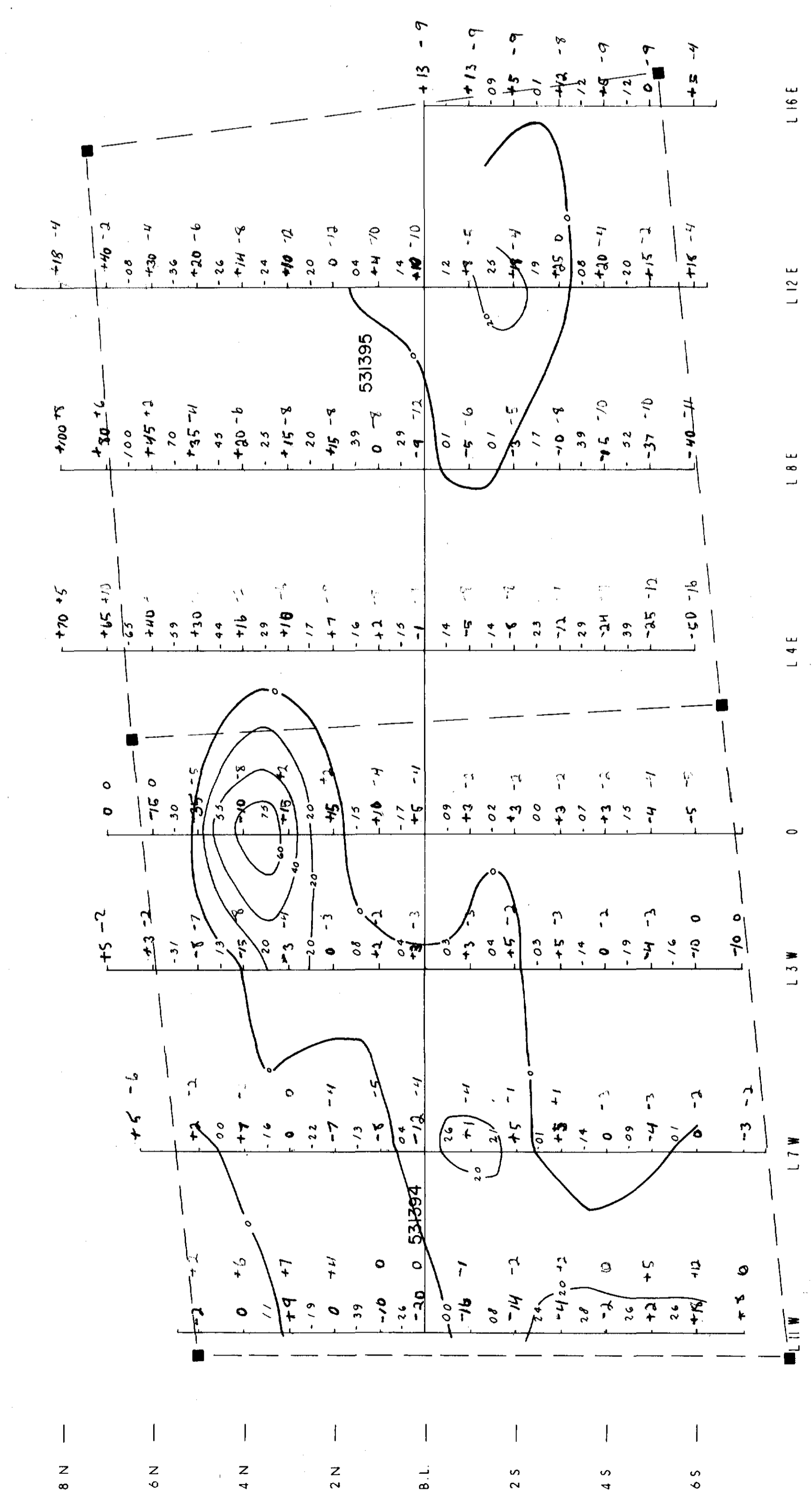
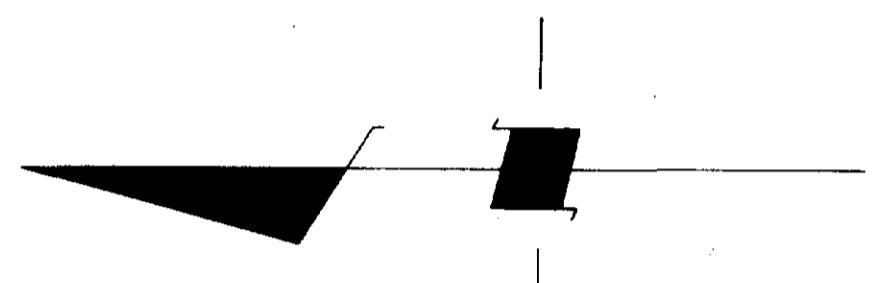


Shining Tree

Shining Tree Lake

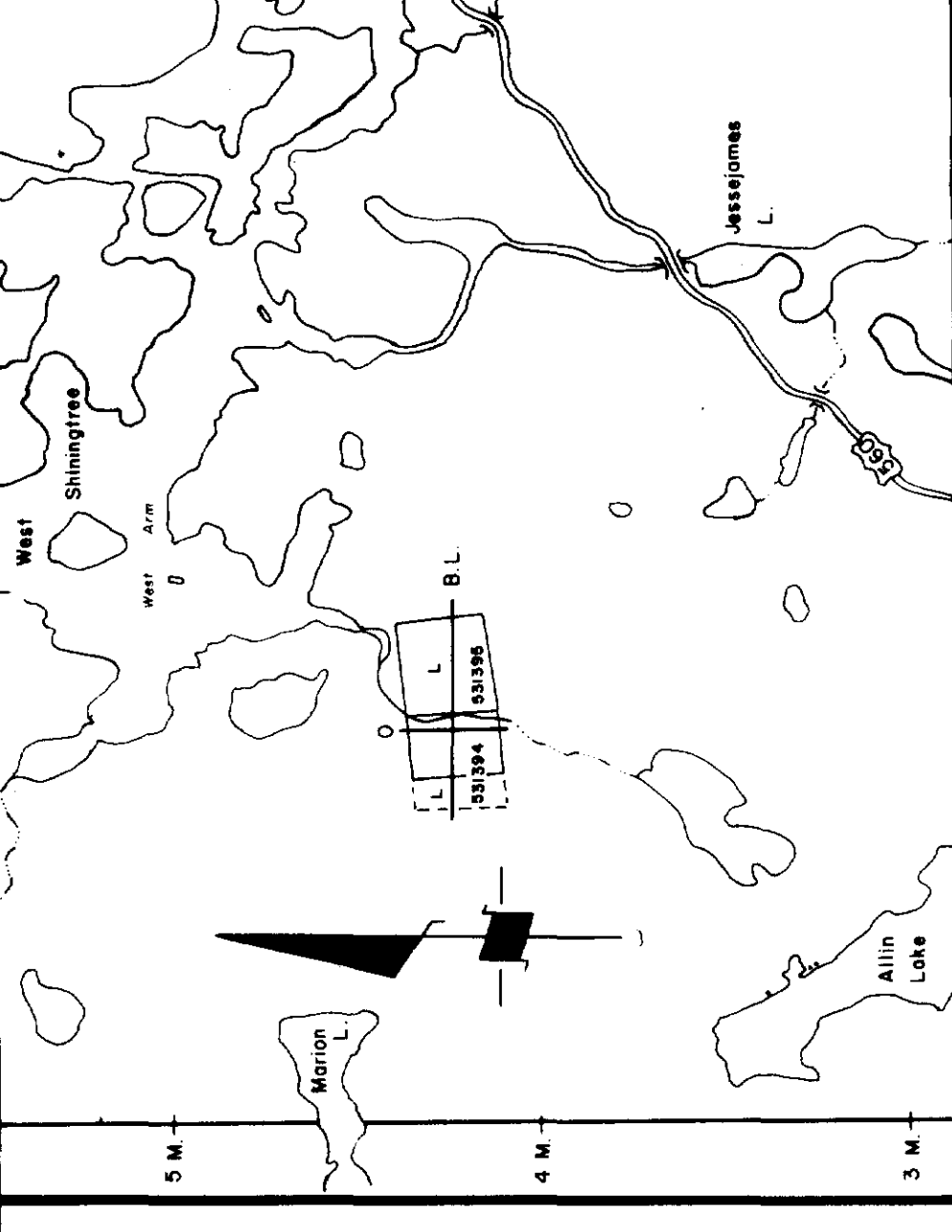


INDEX MAP
Scale 1" = 2640'

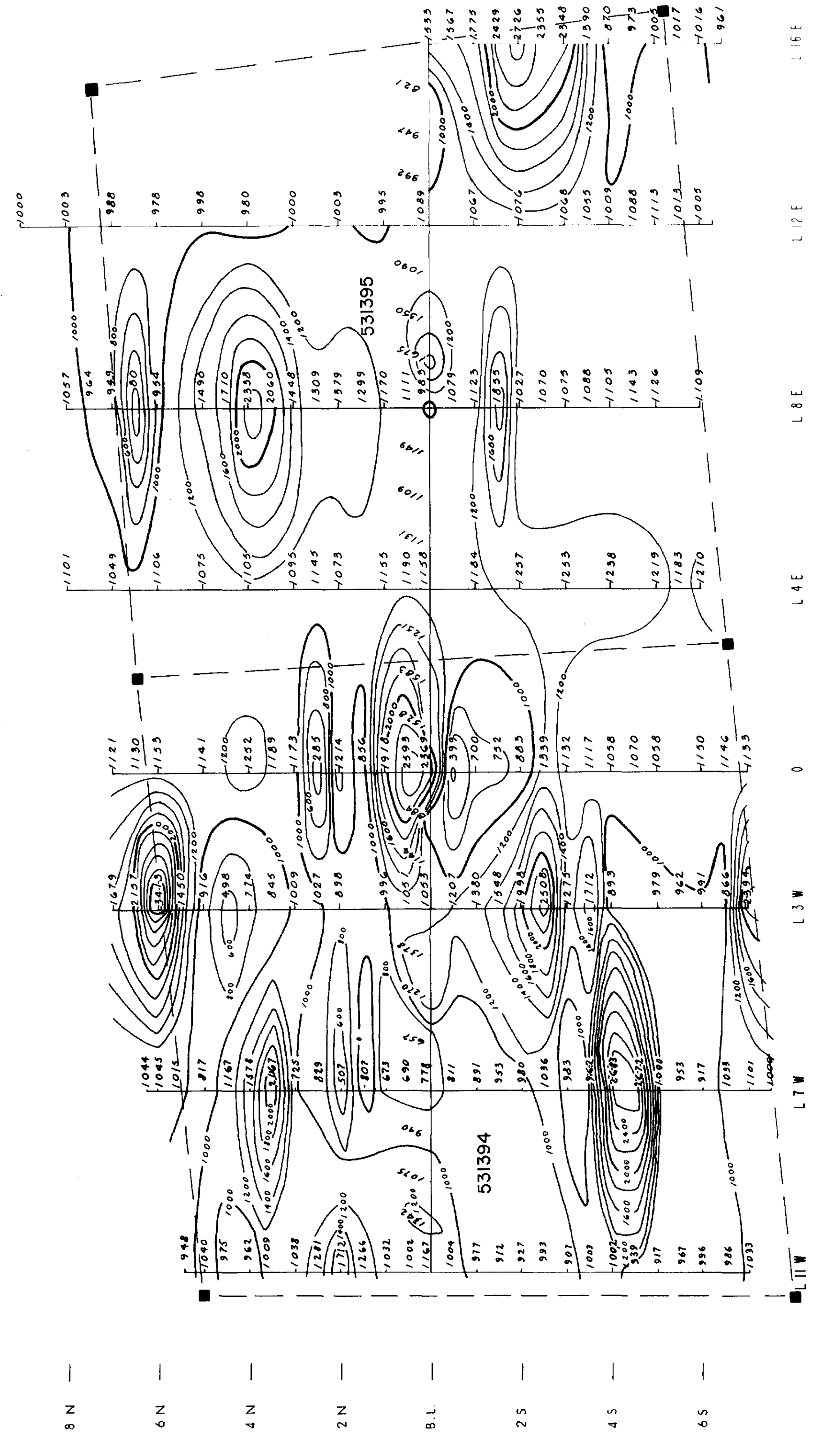


ELECTROMAGNETIC SURVEY
FOR
MINES PATINO (QUE) LTEE

FRASER FILTER PROJECT WEST SHINNING TIRE
SURVEYED BY LD. DATE DEC 80
DRAWN BY RC. SCALE 1"=200'
INSTRUMENT: EM 16 178 KHZ
SERVICES EXPLORATION SERVICES
TWP 45/27/16



INDEX MAP
Scale 1" = 2640'



All readings in range of 58,000 gammas

MAGNETOMETER SURVEY	
FOR	
MINES PATINO (QUE) LTEE	
PROJECT WEST SHINNING TREE	DATE DEC 80
SURVEYED BY L.C.	SCALE 1"=200'
INSTRUMENT: Geometrics G816	DRAWN BY R.C.
ENGR REGD	SERVICES EXPLORATION SERVICES
T.M.P. 4567/1/8	