

41P11SW0260 19 ASQUITH

DIAMOND DRILLING

010

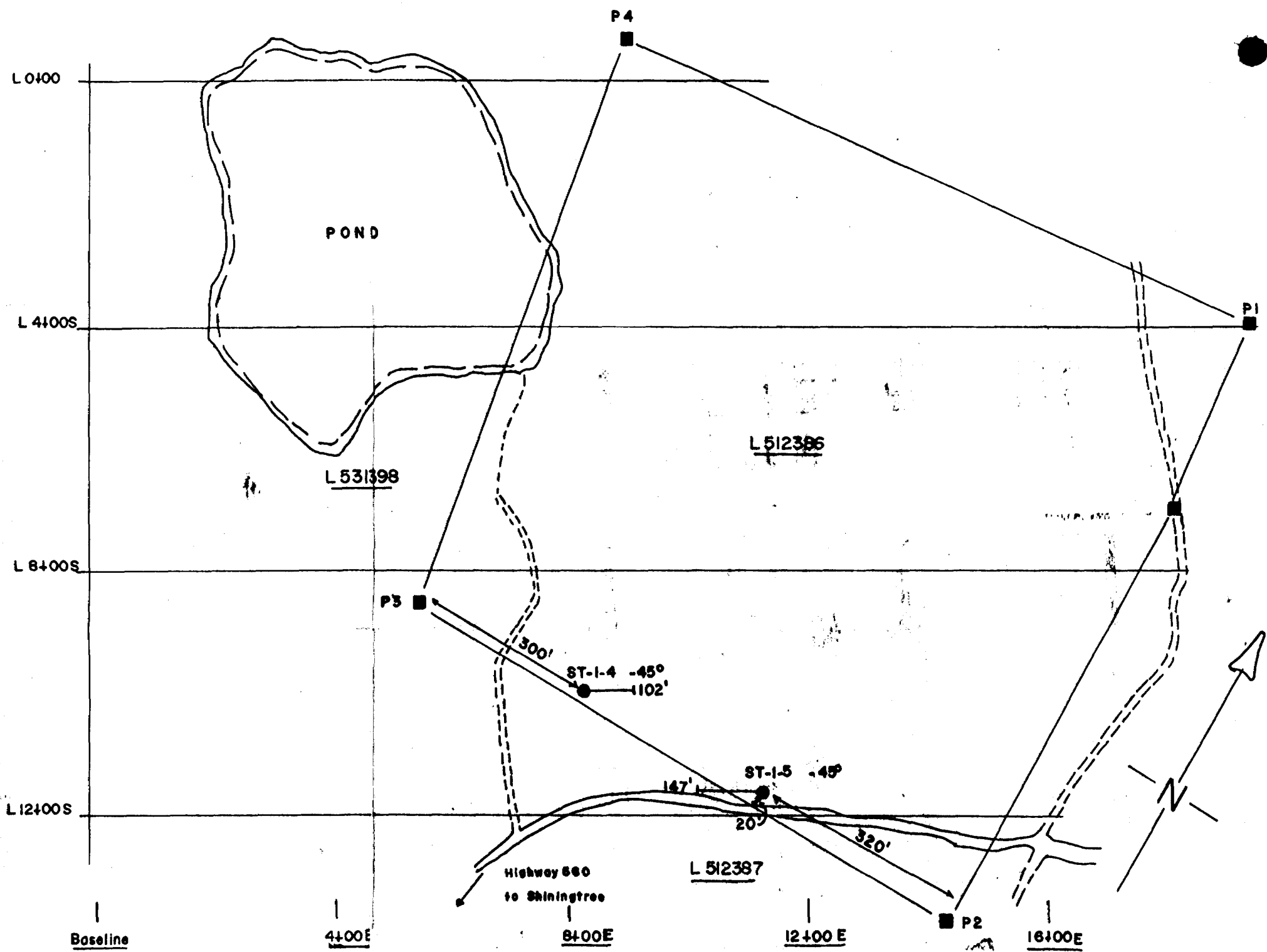
TOWNSHIP: Asquith

REPORT NO.: 19

WORK PERFORMED BY: Patino Mines Ltd.

<u>CLAIM No.</u>	<u>HOLE No.</u>	<u>FOOTAGE</u>	<u>DATE</u>	<u>NOTE</u>
L 512386	ST-1-4	102.5	May/81	(1)
L 512386-7	ST-1-5	147.0	May/81	(1)

NOTES: (1) #514-81



Location of Diamond Drill Holes ST-1-4,5
Annett Option - Shiningtree I Property
ASQUITH TOWNSHIP, ONTARIO

Alice Barr.

SCALE: 1 inch to 200 feet

ST-1-4: L 10+00 S, 8+30 E; -45°, 102.5'

ST-1-5: L 11+60 S, 11+20 E; -45°, 147'

**MINES (QUEBEC) LIMITED
ATINO (QUEBEC) LIMITEE**

Annette Option PROPERTY
Asquith Township

DIP TEST		
FOOTAGE	ANGLE	
	RECORDING	CORRECTED

LEVEL	
LOCATION	12 + 60 S
SECTION	11 + 20 E
LATITUDE	
DEPARTURE	-45°

ELEVATION	
BEARING	240°
LENGTH	147'
CORE SIZE	XR T
FINISHED	May 11 - 14, 1981

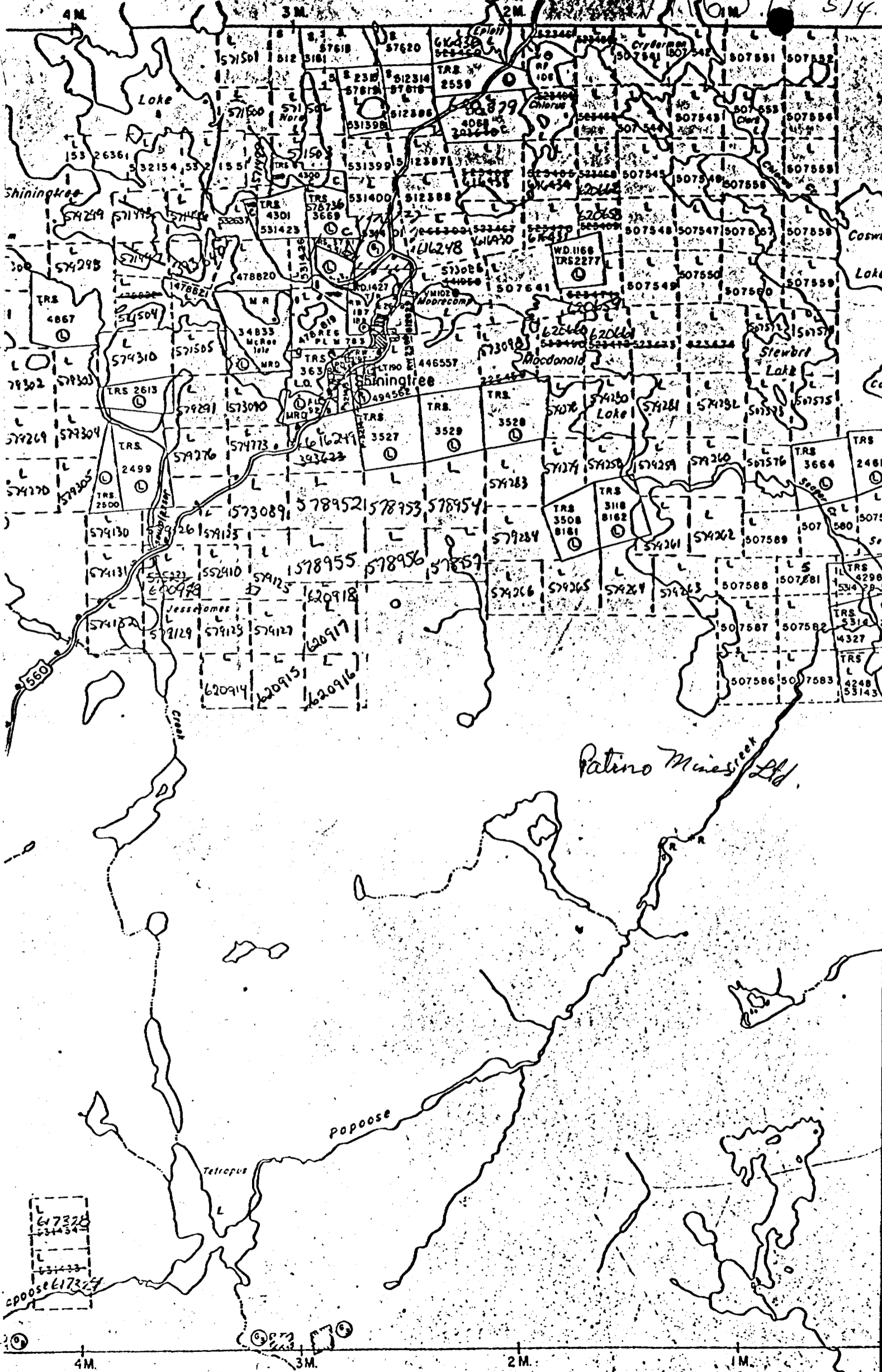
HOLE No.	ST-1-5
SHEET No.	1 of 1
LOGGED BY	A. Bora
PURPOSE	to investigate vert. extent of gos: 000
TOT. RECOVERY	

FOOTAGE		DESCRIPTION	GRADE ESTIMATE	SAMPLE NO.	FOOTAGE			ASSAYS					RECOVERY	
FROM	TO				FROM	TO	LENGTH	% CU	OZ AU	OZ AG	CU CUM. W X A	AU CUM. W X A	RUN	
0	53	FUCHSITE ALTERATION ZONE zone is characterized by 25 - 30% anastomosing qz veining with minor cbt light yellow-green colour fine-grained chlorite - sericite alteration weathers red-brown colour in Qz veining - Fe-cbt siderite minor micaeous fuchsite is associated with qtz veining occurs at edge of vein - schistose habite minor fine-gr. py is associated with veining several phases of veining: minor hairline carbonate and chl veinlets are cross-cut by wider qz + cbt veins some of the qz veins have apparent width of 0.5' this zone probably represents altered basalt												
53	78	CHLORITIZED - SERICITIZED BASALT dark grey colour fine-grained slightly schistose crystallinity is poor due to alteration "spotty" - looking sericitized -(clinozoisite) fsp? in chl'd ground mass strongly chloritized apparent decrease in veining - minor Fe-cbt veining throughout foliation 40 - 45° to CA												
78	147	MAFK DYKE black in colour dense-looking rock aphanitic - cross-out by 25% anastomosing cbt veinlets slightly to strongly magnetic; contact is obscured by intense veining - cbt veining probably cct black chlorite and talcosr? locally cbt eyes - secondary in groundmass and tend to be associated with cbt veining py not evident												
147		EOH 6 boxes												

A. Bora

Churchill Twp. - M. 719

Churchill Twp
M 637 #514



Sheard Twp. - M. 1107