



41P11SW0267 13 ASQUITH

010

Diamond Drilling

Township of ASQUITH

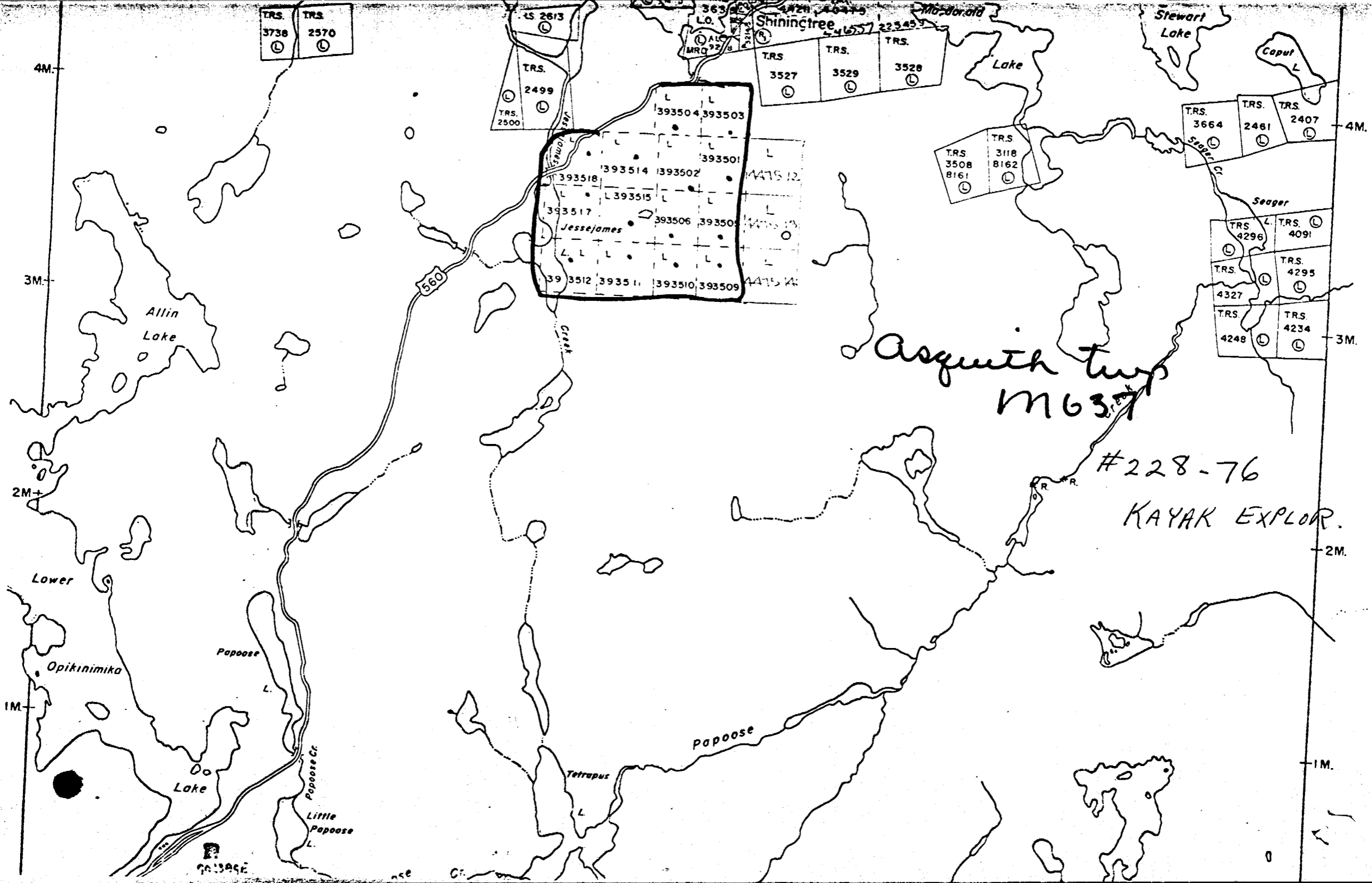
Report NO 13

Work performed by: Kayak Exploration

Claim NO	Hole NO	Footage	Date	Note
L 393509	K-1	110.5'	Apr/76	(1) ✓
	K-2	74.0'	May/76	(1)
	K-3	101.0'	May/76	(1)
L 393515	K-4	150.0'	May/76	(1) ✓
	K-5	101.0'	May/76	(1) ✓
L 393503	K-6	101.0'	June/76	(1)
	K-7	101.0'	July/76	(1)
	K-8	36.0'	July/76	(1)
	K-9	183.0'	July/76	(1)
	K-10	172.0'	July/76	(1)
	<u>10</u>	<u>1129.5'</u>		

Notes:

(1) #228-76



Fawcett Twp. - M. 803

DIAMOND DRILL RECORD

PROPERTY KAYAK EXP. LTD.

HOLE No. K-1

LOCATION Asquith Twp, Ont.
Claim 393509

Started: April 25, 1976

Bearing: 315°

Latitude 610' south # 1 post

Completed: April 29, 1976

Dip: -45°

Departure 470' west

Length: 110.5 feet

Elevation

Dip tests:

Logged by: J. McCannell

Depth	Description	Sample	Footage	Width	Assays	
					Cu. %	Au. .0z.
0.0- 9.0	CASING					
9.0 47.5	LAVA - andesite, fine grained dark green and in places weakly porphyritic. 1/2 inch quartz stringer at 43.0 with heavy chalcopryrite and about 50% quartz with considerable chalcopryrite from 47.1 to 47.5		42.0-47.5	1.83	tr.	
47.5- 72.8	TUFF - fine grained rhyolite tuff or very fine grained novaculite, very massive and showing good bedding, weakly porphyritic with less than 1% finely disseminated pyrite and pyrrhotite throughout					
	47.5-55.3 pinkish coloured and very fine grained					
	50.0-50.5 about 30% quartz with fair amount of chalcopryrite.		50.0-50.5	1.61	0.01	
72.8-110.5	DIABASE - medium grained black coloured showing a sharp chilled contact.					



DIAMOND DRILL RECORD

PROPERTY KAYAK EXP. LTD.

LOCATION Asquith Township, Ont.

Latitude ^{650'} ~~575'~~ south # 1 post

Departure ^{515'} ~~430'~~ west on claim 393509

Elevation

Started: May 2, 1976

Completed: May 3, 1976

Dip tests:

HOLE No. K- 2

Bearing: 315°

Dip: -45°

Length: 74.0 feet

Logged by: J. McCannell

Footage	Description	Sample	Footage	Width	Assays
0.0- 7.0	CASING				
7.0- 30.4	LAVA - andesite, medium to fine grained dark green coloured				
30.4- 74.0	DIABASE - medium grained black coloured, contact with andesite not sharp but somewhat gradational.				

J. McCannell

DIAMOND DRILL RECORD

PROPERTY KAYAK EXPL. LTD.

LOCATION ASQUITH TWP., ONT.
Claim 393509

Latitude 575 feet south of # 1 post

Departure 430 feet west

Elevation

Started: May 5, 1976

Completed: May 10, 1976

Dip tests:

HOLE No. K-3

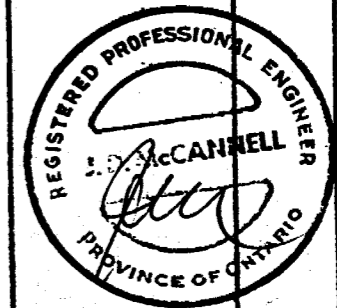
Bearing: 315°

Dip: -45°

Length: 101 feet

Logged by: J. McCannell

Footage	Description	Sample	Footage	Width	Assays
0.0- 17.0	CASING				
17.0-100.5	DIABASE - Matachewan type diabase with occasional fleck of chalcopyrite in quartz filled tight fractures 44.0-44.9 quartz feldspar porphyry 72.0-74.0 quartz feldspar porphyry				



DIAMOND DRILL RECORD

PROPERTY KAYAK EXP. LTD.

LOCATION Asquith Twp, Ont.
Claim 393515

Latitude 350 feet south # 1 post

Departure 425 feet west

Elevation

Started: May 16, 1976

Completed: May 23, 1976

Dip tests:

HOLE No. K-4

Bearing: 330°

Dip: -45°

Length: 150 feet

Logged by: J. McCannell

Footage	Description	Sample	Footage	Width	Gold Assays
0.0- 3.5	CASING				
3.5-150.0	ANDESITE LAVA - massive medium to fine grained dark green coloured andesite flow. Scattered narrow quartz stringers and threads throughout. 49.2-50.2 60% quartz with slight chalcopyrite 81.8- 82.8 Quartz vein 74.9- 75.8 two 3-inch quartz stringers 110.0-111.2 quartz vein				Au. oz/ton 0.03 nil trace 0.02



DIAMOND DRILL RECORD

PROPERTY KAYAK EXP. LTD.

LOCATION Asquith Twp., Ont.
claim 393515

Latitude 340 feet south # 1 post

Departure 400 feet west

Elevation

Started: May 24, 1976

Completed: May 27, 1976

Dip tests:

HOLE No. K-5

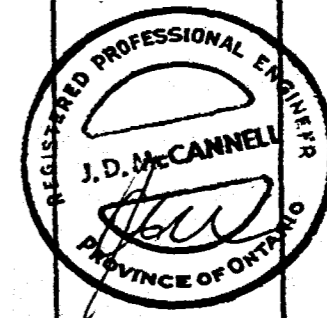
Bearing: N.20° E.

Dip: -45°

Length: 101.0 feet

Logged by: J. McCannell

Footage	Description	Sample	Footage	Width	Assays
0.0- 11.0	CASING				
11.0-101.0	LAVA, medium to fine grained andesite flow. Dark green coloured and very massive with some scattered quartz stringers and threads throughout.				
	17.7-18.6 quartz vein				0.02 oz. Au. /ton



DIAMOND DRILL RECORD

PROPERTY KAYAK EXP. LTD.
 LOCATION Asquith Twp., Ont.
 Claim 393503
 Latitude 530 feet south # 1 post
 Departure 565 feet west
 Elevation

Started: June 10, 1976
 Completed: June 25, 1976
 Dip tests:



HOLE No. K-6
 Bearing: 318°
 Dip: -45°
 Length: 101.0
 Logged by: J. McCannell

Footage	Description	Sample	Footage	Width	Assays
0.0- 6.0	CASING				
6.0- 7.5	LAVA-andesite flow, dark green and fine grained massive.				
7.5- 18.0	TUFF-andesite, well bedded, weakly schistose and quite siliceous.				
18.0- 31.0	LAVA-andesite flow, greenish grey coloured fine to med. grained and very massive one inch quartz stringer at 27.0 27.6-28.1 quartz vein with epidote 30.2-30.5 two 1-inch quartz stringers		27.5- 28.2 30.1- 33.8		Au. oz/ton nil trace
31.0- 33.7	QUARTZ VEINING-about 80% quartz with streaks of epidote and some scattered coarse pyrite.				
33.7- 36.2	LAVA- andesite, medium grained with much epidote alteration and some disseminated pyrite				
36.2- 38.6	QUARTZ VEIN 80% quartz with streaks of epidote and very minor pyrite		36.2- 38.6		Tr.
38.6- 48.3	LAVA andesite coarse grained dioritic with much epidote alteration . 44.0-45.3 qtz vein, qtz stringer at 47.1		43.9- 45.3		nil
48.3- 65.0	LAVA andesite medium to fine grained greyish green coloured with some fine epidote throughout 59.8-63.5 quartz vein		59.8- 63.5		nil
65.0- 78.8	TUFF alternating thin light and dark coloured beds. Rock well bedded weakly schistose and fairly siliceous. slight epidote alteration.		75.0- 76.7		nil
78.8- 89.6	LAVA fine grained greyish green coloured quite siliceous 82.4-86.8 rock well fractured with 60% quartz, both white opaque and glassy types. Slight pyrite		82.4- 87.0		nil
89.6-101.0	PORPHYRY fine to medium grained pinkish coloured composed mostly of quartz and feldspar with some finely disseminated pyrite throughout. Much caving from 92.3 to 101.0. 93.2-94.2 lost core 95.4-96.7 and 98.3-100.0 lost core		96.7-98.4		nil

DIAMOND DRILL RECORD

PROPERTY KAYAK EXPLORATIONS LTD.

LOCATION Asquith Twp., Ont.
Claim 393503

Latitude 560 feet south # 1 post

Departure 665 feet west

Elevation

Started: July 4, 1976

Completed: July 12, 1976

Dip tests:

HOLE No. K-7

Bearing: 318°

Dip: -45°

Length: 101.0 feet

Logged by: J. McCannell

Footage	Description	Sample	Footage	Width	Assays
0.0- 6.0	CASING				
6.0-101.0	DIABASE, Matachewan type diabase, black coloured medium grained and very massive. Occasional pyrite and small fleck of chalcopyrite.				



DIAMOND DRILL RECORD

PROPERTY KAYAK EXPLORATIONS LTD.

HOLE No. K-8

LOCATION Asquith Twp. Ont.
Claim 393503

Started: July 12, 1976

Bearing: 318°

Latitude 500 feet south # 1 post

Completed: July 13, 1976

Dip: -45°

Departure 530 feet west

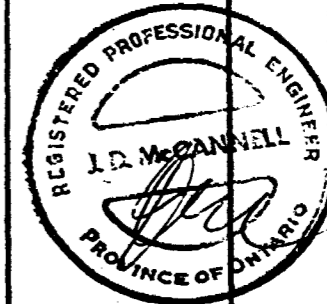
Length: 36.0 feet

Elevation

Dip tests:

Logged by: J. McCannell

Footage	Description	Sample	Footage	Width	Assays
0.0- 9.0 9.0-36.0	<p>CASING DIABASE black coloured medium grained Matachewan type diabase with minor scattered pyrite.</p> <p>Hole stopped at this point rather than gambling on getting out of diabase within a few feet.</p>				



DIAMOND DRILL RECORD

PROPERTY KAYAK EXPLORATIONS LTD.

HOLE No. K-9

LOCATION Asquith Twp., Ont.
Claim 393503

Started: July 21, 1976

Bearing: 360°

Latitude 550 feet south # 1 post

Completed: July 25, 1976

Dip: -45°

Departure 375 feet wet

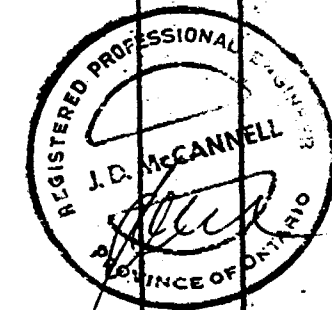
Length: 183 feet

Elevation

Dip tests:

Logged by: J. McCannell

Footage	Description	Sample	Footage	Width	Assays
0.0- 9.0	CASING				
9.0- 54.0	LAVA andesite, fine to medium grained, greyish green coloured very massive with little or no schistosity				
54.0- 74.3	SEDIMENT greywacke well bedded fine grained greenish coloured with scattered quartz eyes. Bedding almost normal to core.				
74.3- 79.0	LAVA andesite flow, fine grained with considerable epidote alteration				
79.0-149.1	SEDIMENT fine grained quartzitic greywacke well bedded with thin light and dark coloured beds. Rock quite hard weakly schistose with some development of sericite. Minor scattered pyrite throughout.				
	132.8-134.5 andesite lava				
	135.2-135.4 quartz stringer				Au. oz/ton
	136.7-136.9 quartz stringer				
	138.4 1-inch quartz stringer with much pyrite				
	145.6-146.5 quartz vein		145.5-146.5		nil
	146.7-146.9 quartz stringer				
149.1-167.9	LAVA andesite flow dark green coloured fine grained and fairly chloritic.				
	151.1-152.0 quartz vein some pyrite		151.0-152.0		nil
	156.0 1-inch quartz stringer				
	156.8 1-inch quartz stringer		162.0-163.0		trace
	158.5-159.4 about 40% quartz in narrow stringers minor py.				
	161.5 and 166.5 1-inch quartz stringers				
	160.2-160.5, 162.0-163.0 and 163.6-164.0 quartz stringers				
167.9-183.0	PORPHYRY fine grained hard siliceous porphyry, pinkish coloured and composed mostly of quartz and feldspar with scattered fine pyrite and occasional fleck of chalcopyrite.		173.5-175.0		nil



DIAMOND DRILL RECORD

PROPERTY Kyak Explorations Ltd.

LOCATION Asquith Twp. Ontario
Claim 393503

Latitude 375 feet south # 1 post

Departure 170 feet west

Elevation

Started: July 30, 1976

Completed: Aug. 6, 1976

Dip tests:

HOLE No. K-10

Bearing: 360°

Dip: -45°

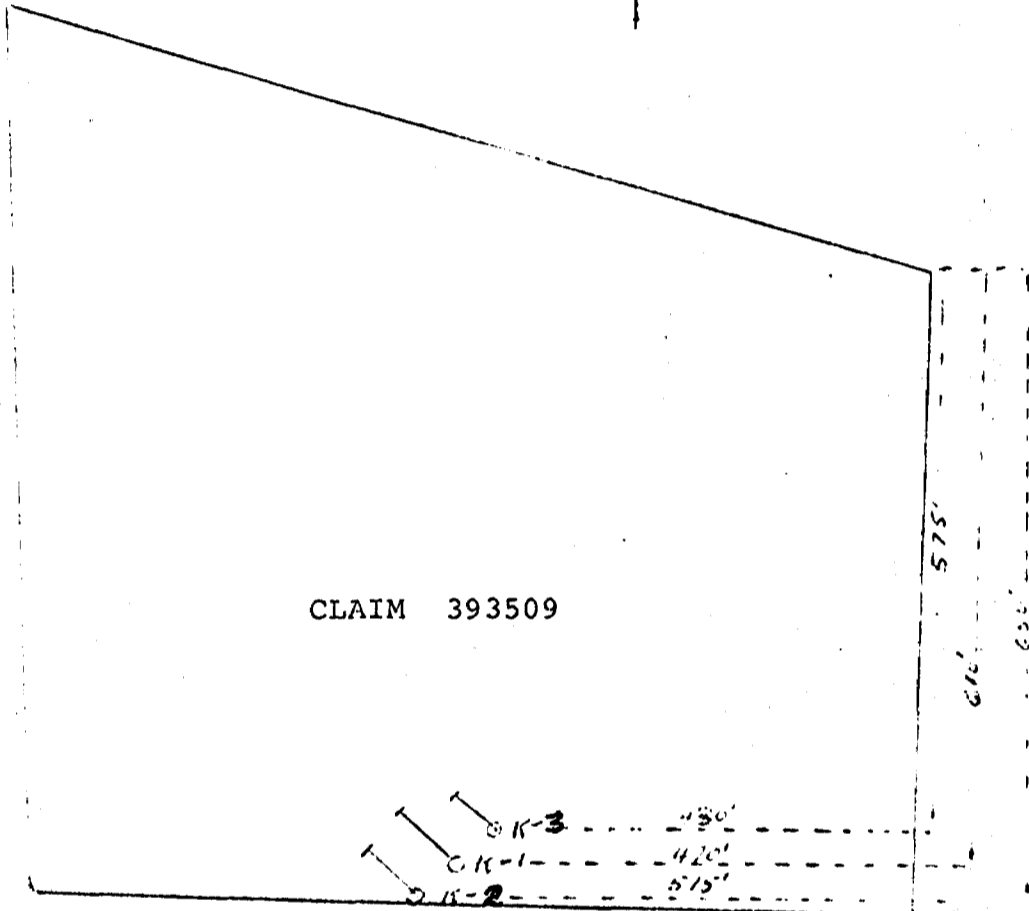
Length: 172 feet

Logged by: J. McCannell

Footage	Description	Sample	Footage	Width	Assays
0.0- 6.0	CASING				
6.0- 19.5	LAVA andesite, massive, dark green and fine grained				
19.5- 29.8	LAVA andesite, light green coloured coarse grained dioritic with fair amount of coarse white feldspar				
29.8- 35.0	TUFF andesitic fine grained showing weak bedding				
35.0- 48.6	LAVA dioritic andesite light green coloured with fair amount of white coarse feldspar				
48.6- 50.0	LAVA dark green massive fine grained andesite				
50.0- 62.9	TUFF well bedded probably water deposited, fine grained well bedded showing alternating light and dark coloured thin beds. Rock quite hard and weakly schistose with about 1/2 % finely disseminated pyrite throughout.				
62.9-117.0	LAVA fine grained dark green coloured andesite				
117.0-149.3	SEDIMENT very fine grained and quartzitic, dark grey coloured with pinkish colouration from the presence of reddish feldspars. Rock in places shows good bedding and streaks of epidote alteration accompanied by coarse disseminated pyrite.				
	143.8-145.0 20% quartz in narrow stringers with 2-3% pyrite		143.8-145.0		Au. nil
149.3-172.0	LAVA fine to medium grained andesite, dark green coloured and very massive with n schistosity. Fair amount of epidote alteration in places. Some scattered quartz stringers up to 2 inches wide.				



N

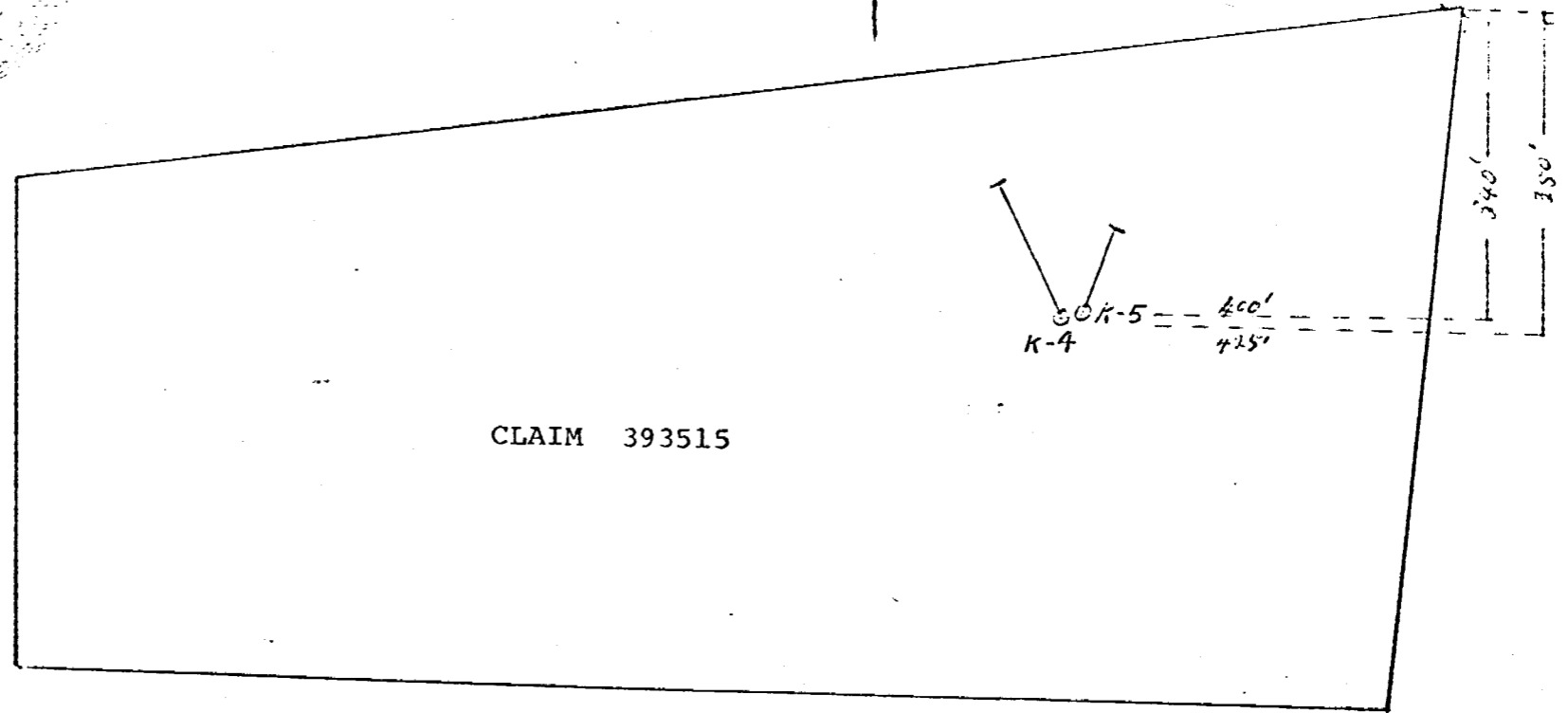


CLAIM 393509

KAYAK EXPLORATIONS LIMITED
ASQUITH TOWNSHIP, ONTARIO
SCALE 1" = 200'

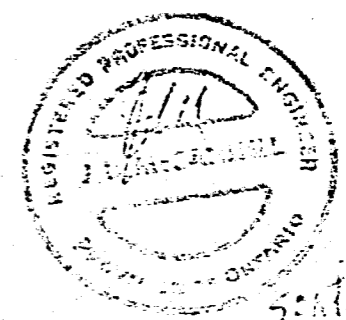


2/17/16

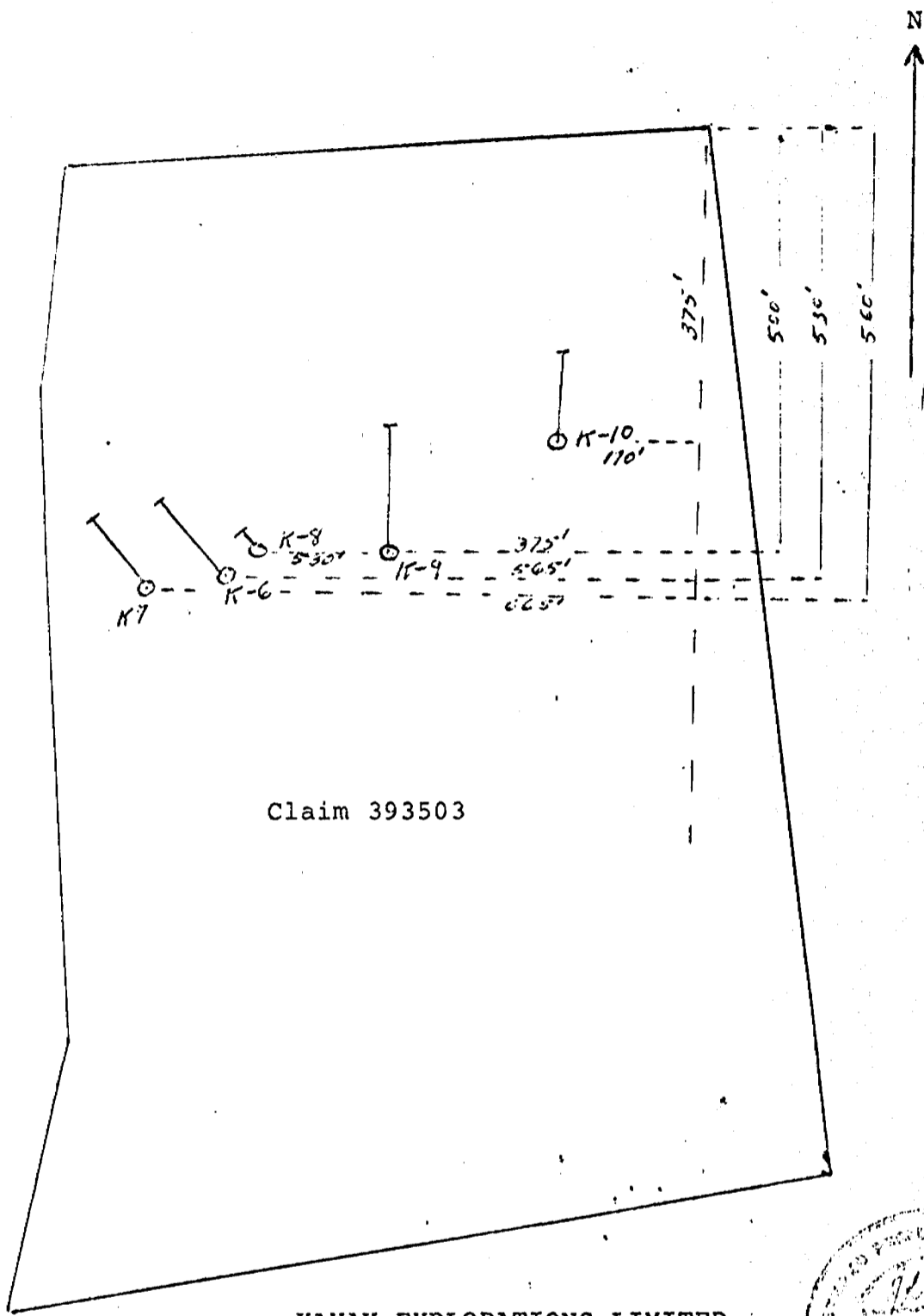


CLAIM 393515

KAYAK EXPLORATIONS LIMITED
ASQUITH TOWNSHIP, ONTARIO
SCALE 1" = 200'

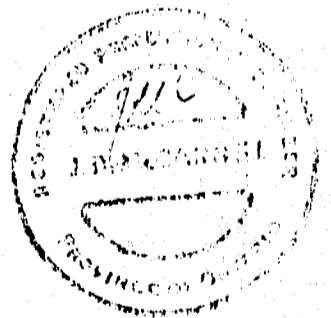


Sept 7, 1976



Claim 393503

KAYAK EXPLORATIONS LIMITED
 ASQUITH TOWNSHIP, ONTARIO
 SCALE 1" = 200'



Sept 7, 1976