



41P12NE8452 11 GROVES

Diamond Drilling

010

Township of GROVES

Report NO 11

Work performed by: Ike Burns

Claim NO	Hole NO	Footage	Date	Note
P 461098	1	123.0'	June/76	(1)

Notes:

(1) #14-77

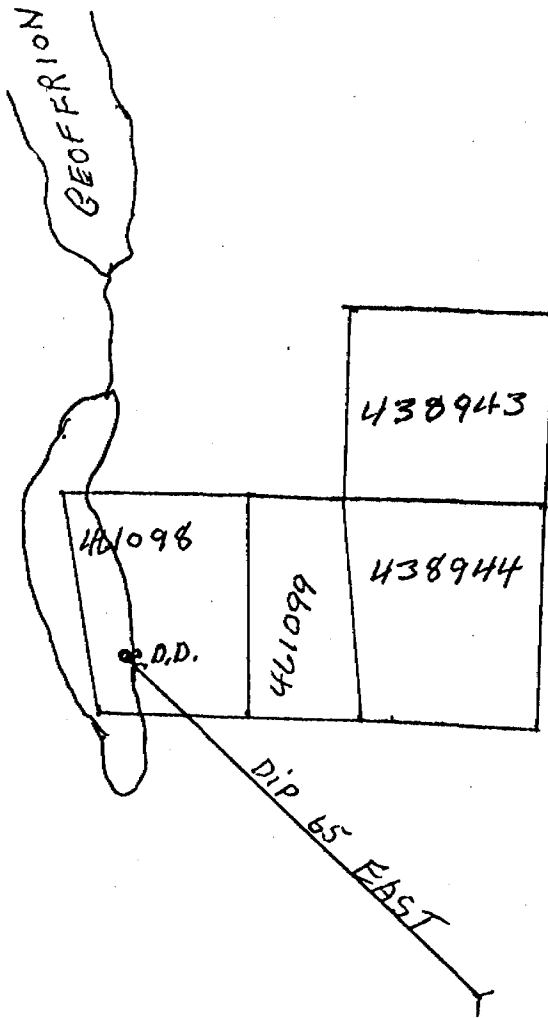
# IKE BURNS CLAIM STAKING & LINE CUTTING

1073 STAFFORD STREET, SUDBURY, ONTARIO

TELEPHONE 566-2023

#14-77

GROVES TWP





THE MINING ACT - MINISTRY OF NATURAL RESOURCES  
DIAMOND DRILLING LOG

Start a new page for every new hole, but fill in top portion of form only on first page for each hole.

FILL IN ON EVERY PAGE

HOLE NO. 1 PAGE NO. 1

DRILLING COMPANY - THE BURNS		COLLAR ELEVATION	BEARING OF HOLE FROM TRUE NORTH	TOTAL FOOTAGE 123	DIP OF HOLE AT collar	LOCATION OF HOLE IN RELATION TO A FIXED POINT ON THE CLAIM LAKE 46099 W3 POST	MAP REFERENCE NO.	CLAIM NO. 461098		
DATE HOLE STARTED April 8 1976	DATE COMPLETED April - 12 1976	DATE LOGGED JUNE 1	LOGGED BY E. BLANCHARD		ft		LOCATION (Tp., Lot, Con. OR Lot. and Long.)	PROPERTY NAME ISSAC BURNS		
EXPLORATION CO., OWNER OR OPTIONEE		DATE SUBMITTED June 15/76	SUBMITTED BY (Signature) E. Blanchard		ft			ft	ft	
					ft			ft	ft	

FOOTAGE FROM TO		ROCK TYPE	DESCRIPTION Colour, grain size, texture, minerals, alteration, etc.	PLANAR FEATURE ANGLE *	CORE SPECIMEN FOOTAGE †	YOUR SAMPLE NUMBER	SAMPLE FOOTAGE FROM TO		SAMPLE LENGTH	ASSAYS †	
0	12'	WATER	- INDICATED IN CORE BOX								
12	15'	MUD-BOULDERS	- MUD - STONES								
15	25'	GRANITE	WITH MINOR SHEAR PLANE. CORE badly broken.								
25	25' 6"	QUARTZ	STAIRS								
25'	6 75'	PHORPHYRIC TYPE GRANITE	- MINOR SULPHIDES FROM 71.5 TO 75'								
75'	77'	LOST CORE	APPEARS TO BE blocky ground								
77	103'	PHORPHYRIC GRANITE	- Saponite AND QUARTZ inclusions FROM 87' TO 88'								
103'	123'	granite	TYPE rock - <del>prob</del> probably of phorphyritic NATURE.								
This hole did not reach the dioritic zone AS ANTICIPATED							NO	ASSAYS	TAKEN		

\* For features such as foliation, bedding, schistosity, measured from the base axis of the core.

† Additional credit available. See Assessment Work Regular