



41P12SE0516 10 GROVES

010

Diamond Drilling

Done

Township of GROVES

Report No: 10

Work performed by: NICKEL RIM MINES

Claim No	Hole No	Footage	Date	Note
MR 31587	M1-63	251.5'	Aug/63	<i>located</i>
	M2-63	200.0' ⁴⁵¹	Aug/63	"
	M3-63	520.0' ⁹⁷¹	Aug/63	<i>located</i>
	M4-63	301.0' ¹²⁷²	Aug/63	"
	M6-63	254.0' ¹⁵²⁴	Sept/63	"
	M7-63	327.0' ¹⁸⁵³	Sept/63	"
	M12-63	214.0' ²⁰⁶⁷	Sept/63	"
MR 31588	M8-63	220.0' ²²⁸⁷	Sept/63	<i>located</i>
	M9-63	201.0' ²⁴⁸⁶	Sept/63	"
	M11-63	290.0' ²⁷⁷⁸	Sept/63	"
MR 35803	M10-63	217.0' ²⁹⁹⁶	Sept/63	"

Notes:

DIAMOND DRILL RECORD

PROPERTY Carroll's Trap **HOLE NO.** M1-63
SHEET NUMBER 1 **SECTION FROM** _____ **TO** _____ **STARTED** Aug. 20/63
LATITUDE 44 S **DATUM** _____ **COMPLETED** Aug. 21/63
DEPARTURE 361 E **BEARING** SOUTH **ULTIMATE DEPTH** 251.5'
ELEVATION 996' **DIP** 45° **PROPOSED DEPTH** _____

DEPTH FEET	FORMATION	SAMPLE No.	WIDTH OF SAMPLE	GOLD \$	SLUDGE GOLD \$
0.0' - 9.0'	CASING				
49.6'	GREYWACKE - gy., med. gr., loc. med. chlor., loc. Br., v. wk. py. occ. st. py. gty. & carb.				
84.0	RYHOLITE - Lt. gy., f. gr., Br. & occ. st. py. gty. & carb., v. wk. t. py. chlor. st. py.				
	G/A on contact 25°				
	84.0 - 88.7	3101	4.7'		
	88.7 - 92.9	3102	4.2'		
	92.9 - 97.0	3103	4.1'		
114.6	DIORITE - gnish, med. gr., shrd. (G/A indet.) wh. to med. py., Pa.				
	97.0 - 100.0	3104	3.0'		
	100.0 - 103.0	3105	3.0'		
	103.0 - 107.0	3106	4.0'		
	107.0 - 110.0	3107	3.0'		
	110.0 - 114.6	3108	4.6'		
119.0	DIORITE - med. gr., chlor., med. py., wk. sp.				
		3109	4.4'		

DIAMOND DRILL RECORD

PROPERTY GROVES TWP. HOLE NO. M-63

SHEET NUMBER 2 SECTION FROM _____ TO _____ STARTED _____

LATITUDE _____ DATUM _____ COMPLETED _____

DEPARTURE _____ BEARING _____ ULTIMATE DEPTH _____

ELEVATION _____ DIP _____ PROPOSED DEPTH _____

DEPTH FEET	FORMATION	SAMPLE NO.	WIDTH OF SAMPLE	GOLD \$	SLUDGE GOLD \$
119.0-124.0	DIORITE - med. gr., chlor., med. py. py. wh. cp.	3110	5.0'		
129.5	DIORITE - str. chlor., alt., str. py. py., cp., med. irreg. sh. py.	3111	5.5'		
136.7	DIORITE - med. t. G. gr., mass., wh. t. loc. med. py., wh. cp.				
147.2 - 150.8		3112	3.6'		
153.0 - 156.0		3113	3.0'		
164.7 - 168.0		3114	3.3'		
170.0 - 174.0		3115	4.0'		
	C/A on contact 30°				
217.5	GREYWACKE - dk., f. gr., str. chlor.				
218.3	DIKE - med. gr., silic., 1/2" str. py. wh. gtz., chlor., wh. py. C/A 45°				
236.0	GREYWACKE - dk., f. gr., str. chlor.				
236.8	DIKE - med. gr., silic., fels.				

MORE

DRILLED BY

SIGNED

DIAMOND DRILL RECORD

PROPERTY

GROVES TRIP

HOLE NO. 171-63

SHEET NUMBER 3 SECTION FROM TO STARTED

LATITUDE DATUM COMPLETED

DEPARTURE BEARING ULTIMATE DEPTH

ELEVATION DIP PROPOSED DEPTH

DEPTH FEET	FORMATION	SAMPLE NO.	WIDTH OF SAMPLE	GOLD \$	SLUDGE GOLD \$
<u>236.8 - 251.5</u>	<u>GREYHORN - dk. grayish-t. gr. mch. to str. chlor. occ. f. stgr. qtz.</u>				
	<u>@ 239: 1/2" wh. qtz stgr.</u>				
	<u>246 - 0.2" qtz/epid. wh. py</u>				
	<u>BOTTOMED AT 251.5'</u>				
	<u>DIP TEST @ 240'</u>				
	<u>READ CORP.</u>				
	<u>46° 39°</u>				

DRILLED BY

SIGNED

[Signature]

DIAMOND DRILL RECORD

 PROPERTY CRADOCK TWP

 HOLE NO. MA-63

 SHEET NUMBER 1

SECTION FROM _____ TO _____

 STARTED AUG. 23/63

 LATITUDE 222 S

DATUM _____

 COMPLETED AUG. 23/63

 DEPARTURE 672 E

 BEARING S 06° E

ULTIMATE DEPTH _____

ELEVATION _____

 DIP 45°

 PROPOSED DEPTH 200'

DEPTH FEET	FORMATION	SAMPLE NO.	WIDTH OF SAMPLE	GOLD \$	SLUDGE GOLD \$
0.0' - 19.0'	CASING - 2' OVERBURDEN				
20.5'	GREYWACKE - grayish, med. gr., med. sh. med. chlor.				
33.5'	DIABASE - med. gr., massive, some pink fels.				
56.7'	GREYWACKE - grayish, med. gr., wk. sh. med. chlor.				
	@ 53' - 0.3' Aplite - sp. 25°				
57.7'	GREYWACKE - med. gr., chlor., med. py	3120	1.0'		
77.0'	GREYWACKE - gy. f. gr., fine fels. X. s. t. st. sp. occ. t. speck sp.				
78.3'	DIKE - med. gr., granitic, med. chlor. sp. 90°				
87.5'	GREYWACKE - gy. f. gr., fels. X. (porphyrite?)				
98.5'	GREYWACKE - f. gr., silic. alt. epid. 1/2 t. carb. st. sp. for. sp. 20°				
107.0'	GREYWACKE - gy. f. gr., fels. X. s. t. sp. D. s. loc. wk. py. occ. fine st. sp. 1/2 t. carb.				

DIAMOND DRILL RECORD

PROPERTY GROVES TRUP HOLE NO. M2-63

SHEET NUMBER 2 SECTION FROM _____ TO _____ STARTED _____
 LATITUDE _____ DATUM _____ COMPLETED _____
 DEPARTURE _____ BEARING _____ ULTIMATE DEPTH _____
 ELEVATION _____ DIP _____ PROPOSED DEPTH _____

DEPTH FEET	FORMATION	SAMPLE NO.	WIDTH OF SAMPLE	GOLD \$	SLUDGE GOLD \$
107.0 - 141.0	DIABASE - (MAT.) med. gr., yell. grn. fels. blcks., irreg. decreas. 109 to 141. Blcks. in first foot mainly cherty qtz.				
142.0	DIABASE? - younger, coar. granitic.				
200.0	DIABASE - (MAT.) med. gr., fels. blcks. smaller, not so frequent.				
Hole BOTTOMED @ 200'					

N.M.P., TORONTO—STOCK FORM NO. 501 REV. 12/51

DRILLED BY

SIGNED W. J. Banner

DIAMOND DRILL RECORD

PROPERTY GRAND'S TWP. **HOLE NO.** M3-63
SHEET NUMBER 1 **SECTION FROM** _____ **TO** _____ **STARTED** Aug. 26/63
LATITUDE 40' N. **DATUM** _____ **COMPLETED** _____
DEPARTURE 000 E **BEARING** S **ULTIMATE DEPTH** _____
ELEVATION _____ **DIP** _____ **PROPOSED DEPTH** _____

DEPTH FEET	FORMATION	SAMPLE No.	WIDTH OF SAMPLE	GOLD \$	SLUDGE GOLD \$
0.0' - 5.0'	CASING - 7' overburden.				
5.0'	GREY WACKE - med. gr. gnish (wh. to med. chlor. wh. shry.				
31.0	Dike - Rhyolitic mat. with 1' transverse qtz. Va. no min.				
62.5	GREY WACKE - gnish, wh. to med. chlor. med. gr. loc. wh. to med. shry. Frey. qtz. silic. porph., fels phenos				
70.0	" - gnish, med. gr. wh. chlor. no shry. occ. f. qtz. stry.				
70.2	VEIN - qtz. carb., no min.				
121.0	GREY WACKE - gy., med. gr., occ. narrow silic. inject., not porphyritic. wh. to med. shry. c/a 90°				
130.0	" - lt. green, c. gr., str. bleached alt.				

MORG

DIAMOND DRILL RECORD

 PROPERTY CROOKS TWP.

 HOLE NO. M3-63

 SHEET NUMBER 2

SECTION FROM _____ TO _____

STARTED _____

LATITUDE _____

DATUM _____

COMPLETED _____

DEPARTURE _____

BEARING _____

ULTIMATE DEPTH _____

ELEVATION _____

DIP _____

PROPOSED DEPTH _____

DEPTH FEET	FORMATION	SAMPLE No.	WIDTH OF SAMPLE	GOLD \$	SLUDGE GOLD \$
130.0 - 178.5	GREY WACKE - gnish, med. gr., low wh to med shrg., occ. patch gy. silic. mat., occ. f. stry. gtz.				
182.5	DIKE - gy. f. gr., silic. wh. py. @ 159' - 1" wh. gtz., wh. py. brd. Copper contact cp 85°	3121	4.0		
179.0	GREY WACKE - gy., med. gr., porphyritized, (fine tab. lvs)				
233.0	" - gnish., med. gr., wh. to med. shrg., occ. patch silic. mat., occ. f. gtz. stry. with wh. py. ep.				
237.5	" - dk. gy., f. to med. gr., f. gtz. stry.				
245.5	" - gnish., med. gr., wh. sh. lvs., wh. shrg., few f. cubes py. @ 245°				
276.0	RHYOLITE - porphyritic, fine to med. gr. wh. py. lvs. on fract. faces. w/ on fract. 70°				
294.0	GREY WACKE - dk. gy., f. to med. gr., f. gtz. stry. cp. 45° - 80°				

 NOTE: HOLE NOT COMPLETED
 Nov. 29/63

DRILLED BY _____

SIGNED _____



DIAMOND DRILL RECORD

PROPERTY Nickel Rim Mines, Grove Twp. Property HOLE NO. M4-63

SHEET NUMBER 1 SECTION FROM _____ TO _____ STARTED Aug. 30/63
 LATITUDE 52° S DATUM _____ COMPLETED Sept. 2/63
 DEPARTURE 444° E. BEARING South ULTIMATE DEPTH 301.0'
 ELEVATION 999' DIP 62° PROPOSED DEPTH _____

DEPTH FEET	FORMATION	SAMPLE NO.	WIDTH OF SAMPLE	GOLD \$ Cu	SLUDGE GOLD \$ Ni
00.0 - 5.0	Gasing -				
186.2	Diabase - med. gr., massive, with qtz. & carb. at 71.1 to 73.5.				
193.3	Rhyolite - 0.2' shrg. at contact				
250.7	Rhyolite - granitized				
254.4	Rhyolite - very weak fine pyrite				
266.0	Rhyolite - porphyritic - very weak pyrite				
267.5	Vein - qtz. and carb., weak pyrite	3127	1.5'	nil	nil
282.3	Rhyolite -				
283.0	- str. qtz. & carb. alt., med py.	3128	1.2'	nil	nil
286.1	- brecciated, weak pyrite				
288.0	- porphyritic with qtz. carb. alt., weak fine min..				
290.2	Rhyolite - 2" granitic qtz. vein at contact weak min.				
301.0	Diorite - f. gr., numerous qtz. carb, strgrs., med. to wk. py., po., cp., on strgrs walls.				
Hole bottomed at 301.0'					

DIAMOND DRILL RECORD

PROPERTY Nio kel Rim Mines - Groves Twp. Property **HOLE NO.** M4 # 68

SHEET NUMBER _____ SECTION FROM _____ TO _____ STARTED _____

LATITUDE _____ DATUM _____ COMPLETED _____

DEPARTURE _____ BEARING _____ ULTIMATE DEPTH _____

ELEVATION _____ DIP _____ PROPOSED DEPTH _____

DEPTH FEET	FORMATION	SAMPLE NO.	WIDTH OF SAMPLE	GOLD \$	SLUDGE GOLD \$	
	<u>SAMPLES</u>			Cu,	Ni.	
	239.0' - 244.0'	3123	5.0'	nil	nil	
	244.0' - 249.0'	3124	5.0'	nil	nil	
	249.0' - 250.7'	3125	1.7'	nil	nil	
	254.4' - 255.7'	3126	1.3'	nil	nil	
	286.0' - 288.0'	3129	2.0'	nil	nil	
	288.0' - 291.0'	3130	3.0'	nil	nil	
	291.0' - 296.0'	3131	5.0'	nil	nil	
	296.0' - 301.0'	3132	5.0'	nil	nil	

DRILLED BY _____ SIGNED _____

DIAMOND DRILL RECORD

PROPERTY Nickel Rim Mines Ltd., Groves Twp. Prop. HOLE NO. 26 - 68

SHEET NUMBER 1 SECTION FROM _____ TO _____ STARTED Sept. 5/68
 LATITUDE 51 S. DATUM _____ COMPLETED Sept. 5/68
 DEPARTURE 384 E. BEARING South ULTIMATE DEPTH 254.0'
 ELEVATION 998' DIP Collar -73°, @ 240' - 77° corr. PROPOSED DEPTH _____

DEPTH FEET	FORMATION	SAMPLE NO.	WIDTH OF SAMPLE	GOLD \$	SLUDGE GOLD \$	SI	CU.
0.0 - 3.0	Casing -			Ag	Au		
3.8	Rhyolite Breccia - f.gr., slightly porph..						
6.4	Diorite - porphyritic - wk. min..	3134	2.6'			Nil	Nil
25.0	Rhyolite Breccia - gnish., med. schist., silic., qtz., & carb. strgrs..						
53.8	Diorite (?) - gnish., f.gr., qtz. & carb. strgrs.						
54.6	Quartz - white, brecciated, no min..						
90.0	Rhyolite - brecciated						
94.9	Rhyolite - bx'd., granitized, qtz. strgrs. wk. to med. py. . 91.0 - 94.9	3135	3.9'			Nil	Nil
100.0	Diorite - f.gr., wk. to med. py., some po.						
112.7	Rhyolite - brecciated, wk. to med. py..						
118.4	Calcite - barren						
167.9	Rhyolite - brecciated.						
170.4	Rhyolite - brecciated, silicified, qtz. strgrs.						
254.0	Rhyolite - brecciated.						
Hole bottomed at 254.0'							
	98.8 - 103.8	3136	5.0'			Nil	Nil
	168.0 - 162.0	3137	4.0'			Nil	Nil
	167.9 - 170.8	3138	3.4'			Nil	Nil

DIAMOND DRILL RECORD

PROPERTY Nickel Rim Mines Ltd., Groves Twp. Prop. HOLE NOM 7 - 63

SHEET NUMBER 1 SECTION FROM _____ TO _____ STARTED Sept. 5th/63
 LATITUDE 2' south DATUM _____ COMPLETED Sept. 7th/63
 DEPARTURE 368' east BEARING _____ ULTIMATE DEPTH 327.0'
 ELEVATION 994' DIP Collar - 78°, @ 235' - 67° corr. PROPOSED DEPTH _____

DEPTH FEET	FORMATION	SAMPLE NO.	WIDTH OF SAMPLE	GOLD \$	SLUDGE GOLD \$
0.0 - 8.0	Casing -				
11.0	Diorite - strky. chlor.alt., silio.alt., strgrs. qtz.& carb., ore badly broken-fault zones.				
54.0	Diorite - blue siliceous alt., qtz.& carb. strks. local wk.f. sulphides.				
84.8	Qtz. Diorite - moderate silio., qtz.& carb. strgrs., local wk. py.po..				
123.3	Qtz. Diorite - locally str. silio.& chlor.alt..				
127.3	Qtz. Diorite - str. silio., b'x'n., wk. py.				
164.0	Qtz. Diorite - med. to str. alt., wk. loc. shrg., loc. b'x'n., some chlor., wk. loc. py..				
166.0	Qtz. Carb. Breccia.				
183.0	Diorite - f.gr., loc. rhyolitic, qtz.& carb. strgrs.				
247.5	Diorite - gnish., shreddy (wk. sch.) med. strky. chlor., loc. bx., ooc. qtz. strgr. or patches of qtz..				
252.7	Diorite - med. chlor., spotty bleached alt., qtz. strgrs..				
279.5	Diorite - gnish., fine to med. gr., loc. wk. schg., loc. silio., wk. min..				
280.3	Qtz. Carb. Breccia				
	(more)				

DIAMOND DRILL RECORD

PROPERTY Nickel Rim Mines Ltd., Groves Twp. Prop.

HOLE NO. M 7 - 63

SHEET NUMBER 2

SECTION FROM _____ TO _____

STARTED _____

LATITUDE _____

DATUM _____

COMPLETED _____

DEPARTURE _____

BEARING _____

ULTIMATE DEPTH _____

ELEVATION _____

DIP _____

PROPOSED DEPTH _____

DEPTH FEET	FORMATION	SAMPLE NO.	WIDTH OF SAMPLE	GOLD - g	SLUDGE GOLD - g	NI	CU
290.3-305.0	Diorite - f.gr., strky. qtz. & carb. alt., some bxn., ooo. strgr. qtz. & carb., loc. wk. min.						
327.0	Qtz. Diorite - med. gr., med. chlor., sparse fine min.						
Hole bottomed at 327.0'							
SAMPLES -----							
		34.7' - 39.5'	3140	4.8'	0.2	Nil	Nil
		39.5' - 43.9'	3141	4.4'	0.4	Nil	Nil
		43.9' - 48.6'	3142	4.7'	Tr.	Nil	Nil
		54.0' - 59.5'	3146	4.5'	1.0	Nil	Nil
		63.3' - 64.9'	3144	1.5'	Nil	Nil	Nil
		48.6' - 54.0'	3143	5.4'	0.3	Nil	Nil
		80.0' - 84.8'	3145	4.8'	0.8	Nil	Nil
		123.3' - 127.3'	3147	4.0'	1.1	Nil	Tr.
		133.2' - 135.5'	3148	2.3'	0.6	Nil	Tr.
		143.0' - 147.0'	3149	4.0'	Nil	Nil	—
		159.0' - 163.0'	3150	4.0'	(3.4)	Nil	Nil
		259.2' - 261.1'	3139	1.9'	0.4	Nil	Nil
		301.0' - 305.0'	3151	4.0'	0.8	Nil	Nil

DIAMOND DRILL RECORD

PROPERTY Nickel Rim Mines Ltd., Groves Twp. Prop.

HOLE NO. N 8 - 63

SHEET NUMBER 1

SECTION FROM _____ TO _____

STARTED Sept. 8/63

LATITUDE 67 north

DATUM _____

COMPLETED Sept. 10/63

DEPARTURE 65 east

BEARING _____

ULTIMATE DEPTH 220.0'

ELEVATION 959.5

DIP vertical

PROPOSED DEPTH _____

DEPTH FEET	FORMATION	SAMPLE NO.	WIDTH OF SAMPLE	GOLD \$	SLUDGE GOLD \$
0.0' - 12.5	Casing - sand				
68.5	Diorite - lt. gy., str. silio. alt., some carb., str. gr. ohlor., med. shrg., wk. to med. f. py., med. s. pale garnets, ooo. strgr. qtz. and carb.. o/a 20° - 30°				
73.5	Diorite - gy., med. gr., little or no alt., qtz. eyes.				
97.0	Diorite - lt. gy., str. silio. alt., shrd., wk. ohlor., wk. dissem. py., o/a on shr. 20° - 30°				
101.0	Diorite - gy., med. gr., little or no alt., qtz. eyes.				
105.8	Diorite - gy., str. silio. alt., locally granitic, f. strgrs. epidote, v. wk. f. py.				
109.8	Diorite - gy., str. silio. alt., med. shrg., wk. to med. py., o/a 20° - 30°				
126.8	Diorite - gnish., med. gr., wk. silio. alt., med. ohlor., wk. shrg., med. f. dissem. py.				
140.5	Diorite - lt. gy., str. silio. alt., granitized, loc. wk. to med. f. py.				
174.5	Diorite - gy. gn., v. f. gr., wk. ohlor., loc. wk. to med. f. py., fine strgrs. qtz. and carb.				
184.0	Diorite - lt. gy., str. silio. alt., granitized, wk. shrg., o/a 20°				
197.0	Diorite - gy., f. gr., wk. ohlor., random f. strgrs. carb.				

(more)

DRILLED BY

SIGNED

DIAMOND DRILL RECORD

PROPERTY Nickel Rim Mines Ltd., Groves Twp., Prop.,

HOLE NO. M 8 - 68

SHEET NUMBER 2

SECTION FROM _____ TO _____

STARTED _____

LATITUDE _____

DATUM _____

COMPLETED _____

DEPARTURE _____

BEARING _____

ULTIMATE DEPTH _____

ELEVATION _____

DIP _____

PROPOSED DEPTH _____

DEPTH FEET	FORMATION	SAMPLE NO.	WIDTH OF SAMPLE	GOLD'S	SLUDGE	Ni.	Cu
197.0 - 198.5	Diorite - silic. alt., wk. chlor. slight granitized.			Ag	Zn		
220.0	Diorite - gy., f.gr., med. chlor., random fine carb, strgrs.						
	SAMPLES -----						
	12.5' - 17.0'	3152	4.5'			Nil	Nil
	104.8' - 109.8'	3153	5.0'			Nil	Nil
	109.8' - 114.0'	3154	5.0'			Nil	Nil
	114.8' - 119.5'	3155	4.7'			Nil	Tr
	119.5' - 123.7'	3156	4.2'			Nil	Nil
	123.7' - 126.8'	3157	3.1'			Nil	Nil
	135.0' - 139.0'	3158	4.0'			Nil	Nil.
	Hole bottomed at 220.0'						

DRILLED BY

SIGNED *W. J. Hanna*

DIAMOND DRILL RECORD

PROPERTY Nic kel Rim Mines Ltd., Groves Twp. Prop. HOLE NO. M12 - 63

SHEET NUMBER 1 SECTION FROM _____ TO _____ STARTED Sept. 19/63
 LATITUDE 140° S. DATUM _____ COMPLETED Sept. 22/63
 DEPARTURE 300° E. BEARING N 18° W ULTIMATE DEPTH 214'
 ELEVATION 973.5' DIP Collar -72°. At 200' -62° corr. PROPOSED DEPTH _____

DEPTH FEET	FORMATION	SAMPLE NO.	WIDTH OF SAMPLE	GOLD \$	SLUDGE Silver	Cu	Ni
00.0 - 6.0	Casing -						
20.8	Qtz. Diorite - gy., f.gr., porphyritic, wk.py.,						
22.0	Qtz. Diorite - gnish., m.gr., med.chlor., med. shrg., med.py.po., wk.cp	3172	1.8'			0.10	0.10
44.5	Qtz. Diorite - gnish., med.gr., med.chlor., wk. shrg., wk.py., occ.strgr.qtz..						
63.4	Qtz. Diorite - gnish., med.gr., med.shrgr., med.chlor., med. to str.po., py., cp..						
	44.5' - 49.0'	3161	4.5'	nil	0.38	0.80	1.10
	49.0' - 54.0'	3162	5.0'	Tr	nil	0.83	1.05
	54.0' - 59.0'	3167	5.0'	0.01	NA	0.44	0.25
	59.0' - 63.4'	3168	4.4'	Tr	NA	0.60	0.40
68.4	Qtz. Diorite - Med.gr., med.shrg., med.chlor., med.to str.cp., po., py.	3169	5.0'	nil	1.10	2.30	1.25
73.4	Qtz. Diorite - m.gr., med.shrg., str.chlor., V.str.pent., cp., po., py..	3170	5.0'	NA	0.76	2.00	5.00
76.6	Qtz. Diorite - med.gr., med.chlor., med.shrg., wk.to med.cp., po., py..	3171	3.2'	0.01	0.20	0.70	0.85
90.8	Qtz. Diorite - med.gr., med.shrg.& chlor., wk.po., py., cp..						
	more						

DIAMOND DRILL RECORD

PROPERTY Nickel Rim Mines Ltd., Groves Twp. Prop. HOLE NO. M12 - 63

SHEET NUMBER 2 SECTION FROM _____ TO _____ STARTED _____
 LATITUDE _____ DATUM _____ COMPLETED _____
 DEPARTURE _____ BEARING _____ ULTIMATE DEPTH _____
 ELEVATION _____ DIP _____ PROPOSED DEPTH _____

DEPTH FEET	FORMATION	SAMPLE NO.	WIDTH OF SAMPLE	GOLD \$	SLUDGE GOLD \$	Cu	Ni
	77.6' - 81.3'	3173	4.0'	00.01	NA	nil	nil
	81.3' - 86.3'	74	5.0'	nil	NA	nil	Tr.
	86.3' - 90.2'	68	3.9'	Tr	0.20	nil	0.10
90.2' - 103.2	Qtz. Diorite - med. gr., med. shrg., str. chlor., med. to str. cp., po., py..						
	90.2' - 92.3'	3164	2.1'	Tr	Tr	0.44	1.00
	92.3' - 97.3'	3165	5.0'			nil	0.10
	97.3' - 102.3'	3166	5.0'			nil	0.10
107.3	Qtz. Diorite - as above, wk. po., py., cp..	3175	4.0'			nil	0.10
115.5	Qtz. Diorite - as above, v. wk. min..						
116.7	Qtz. Diorite - med. gr., med shrg., str. chlor., str. po., py., cp..	3176	1.2'			0.42	2.10
122.5	Qtz. Diorite - str. chlor., wk. min..						
125.1	Qtz. Diorite - silicious, wk. to med. po., py., cp	3177	2.6'			Tr	nil
136.0	Qtz. Diorite - med. gr., wk. chlor., v. wk. min.						
138.0	Diorite? - dk. gy., f. gr., wk. chlor., wk. min..						
214.0	Diorite - f. to med. gr., wk. to med. chlor., wk. shrg., v. wk. fine py., occ. str white qtz. 0.1' qtz., epid., jasper at 200' 1.0' bx. with epidote at 148'						
Hole bottomed at 214.0'							

DIAMOND DRILL RECORD

PROPERTY Nickel Rim Mines Ltd., Groves Twp. Property HOLE NO. M9 - 63

SHEET NUMBER 1

SECTION FROM _____ TO _____

STARTED Sept. 11/63

LATITUDE 16 N.

DATUM _____

COMPLETED Sept. 12/63

DEPARTURE 40 E.

BEARING _____

ULTIMATE DEPTH 201.0'

ELEVATION 950.7'

DIP vert.

PROPOSED DEPTH _____

DEPTH FEET	FORMATION	SAMPLE NO.	WIDTH OF SAMPLE	GOLD g	SLUDGE GOLD g
0.0 - 15.0	Casing				
59.0	Diorite - gy., str. sil. & carb. alt., med. chlor., wk. shrg., v. wk. fine py., freq. s. garnets. o/a on shrg. 20°-25°.				
133.0	Diorite - gy., str. sil. & carb. alt., med. chlor. in strks., bx'd., wk. fine py..				
157.5	Diorite - gy. gn., f. to med. gr., ooo. fine strgr. qtz. & carb.. o/a 40°.				
201.0	Diorite - gy., str. sil. & carb. alt., wk. strky. chlor., v. wk. f. py., bx'd..				
	Hole bottomed at 201.0'				

N.M.P., TORONTO - STOCK FORM No. 501 REV. 12/51

DRILLED BY

SIGNED *[Signature]*

DIAMOND DRILL RECORD

PROPERTY Nickel Rim Mines Ltd., Groves Twp.

HOLE NO. 110 - 65

SHEET NUMBER 1

SECTION FROM _____ TO _____

STARTED Sept. 13/65

LATITUDE 353 S.

DATUM _____

COMPLETED Sept. 15/65

DEPARTURE 209 E.

BEARING S 46° W

ULTIMATE DEPTH 217.0'

ELEVATION _____

DIP Collar -40° @ 200' - 35°(corr.)

PROPOSED DEPTH _____

DEPTH FEET	FORMATION	SAMPLE NO.	WIDTH OF SAMPLE	GOLD \$	SLUDGE GOLD \$		
0.0' - 14.0	Casing -						
15.5	Qtz. Diorite - med. gr..						
93.0	Diorite - f.to med. gr., qtz. & carb. frags. & strgrs., wk. to med. loc. py., locally granitized.						
96.1	Diorite - 1/2 f. gr., bleached alt..						
98.0	Diorite - v.f. gr., black,						
117.0	Seds. (?) - v.f. gr., siliceous, brittle						
125.0	Diorite - med. to c. gr., wk. chlor..						
127.9	Seds. (?) - v.f. gr., black, siliceous.						
136.5'	Diorite - f. to med. gr., gy. to black, speckles (re-crystallized), wk. py. po..						
168.9	Diorite - f. gr., black, qtz. strgrs., loc. bx'n. & granitization.						
171.0	Diorite - grey to black, carb. strgr. at each contact.						
185.0	Diorite - bx'd., consid. granitization						
209.0	Diorite - more granitic.						
217.0	Granite (arkose?) - consid. pyroxene						
Hole bottomed at 217.0'							

DIAMOND DRILL RECORD

PROPERTY Nic kel Rim Mines Ltd., Groves Twp. Prop. HOLE NO. M11 - 63

SHEET NUMBER 1 SECTION FROM _____ TO _____ STARTED Sept. 16/63
 LATITUDE _____ DATUM _____ COMPLETED Sept. 19/63
 DEPARTURE _____ BEARING _____ ULTIMATE DEPTH 290.0'
 ELEVATION _____ DIP _____ PROPOSED DEPTH _____

DEPTH FEET	FORMATION	SAMPLE No.	WIDTH OF SAMPLE	GOLD \$	SLUDGE GOLD \$	
00.0 - 26.0	Casing					
46.9	Diorite - str. sil. & carb. alt., bx'd., wk. min.					
56.4	Diorite - med. gr.					
65.8	Diorite - str. sil. & carb. alt., local str. shrg, and bx'n.					
119.1	Rhyolite? - siliceous, bx'd.					
127.0	Rhyolite - siliceous with carb. strks.					
131.6	Diorite - dk. blue, siliceous					
227.5	Rhyolite - bx'd., granitized to salmon colour. wk. py.					
232.0	Diorite - slicified		} Fault zone - core recovery poor.			
244.0	Diorite - med. gr..					
247.0	Qtz. and quartz bx.					
250.5	Diorite, - shrd, siliceous					
251.0	Granite - highly felspathic - could be arkose					
263.0	Diorite - silic., bx'd., locally granitic					
290.0	Granite - f. to med. gr., pink.					
Hole bottomed at 290.0'						

DIAMOND DRILL RECORD

0' to 284' reported August 30th, 1963.

PROPERTY Nickel Rim Mines Ltd., Groves Twp. Prop. HOLE NO. M 3 - 63

SHEET NUMBER 8 SECTION FROM 284.0' TO 520.0' STARTED Sept. 22/63
 LATITUDE 40 North DATUM _____ COMPLETED Sept. 24/63
 DEPARTURE 600 East BEARING S 40° E ULTIMATE DEPTH 520.0'
 ELEVATION _____ DIP Collar-45°, 100'-40°, 360'-34° PROPOSED DEPTH _____

DEPTH FEET	FORMATION	SAMPLE NO.	WIDTH OF SAMPLE	GOLD \$	SLUDGE GOLD \$
284.0-296.0	Greywacke - dk. gy., f. to med. gr., fine qtz. strgrs.				
312.8	Greywacke - f. gr., porphyritic.				
326.6	Rhyolite - f. gr., numerous qtz. strgrs.				
346.8	Diorite - med. bleached alt., wk. min.				
349.0	Rhyolite -				
352.0	Greywacke - f. gr., no min.				
359.2	Rhyolite - brecciated				
380.0	Diorite - gnish., f. to med. gr., wk. f. py.				
424.0	Diorite - f. to med. gr., wk. chlor. and shrg., ooc. strgrs. qtz. & carb., wk. to med. bleached alt., porphyritic at lower contact.				
436.5	Seds. (?) - v. f. gr., dk. gy., wk. py., talc slip.				
449.0	Diorite - med. gr., wk. chlor., med. bleached alt.				
471.5	Diorite - f. to med. gr., str. silic. alt. & bxm., ooc. granitic inclusion.				
520.0	Diorite - f. gr., wk. loc. alt., wk. f. py.				
Hole bottomed at 520.0'					

DRILLED BY

SIGNED *W. J. Bonner*

Groves Twp.
M 898

McBreast Lake

GROVES LAKE

Island Lake

Red Pine Lake

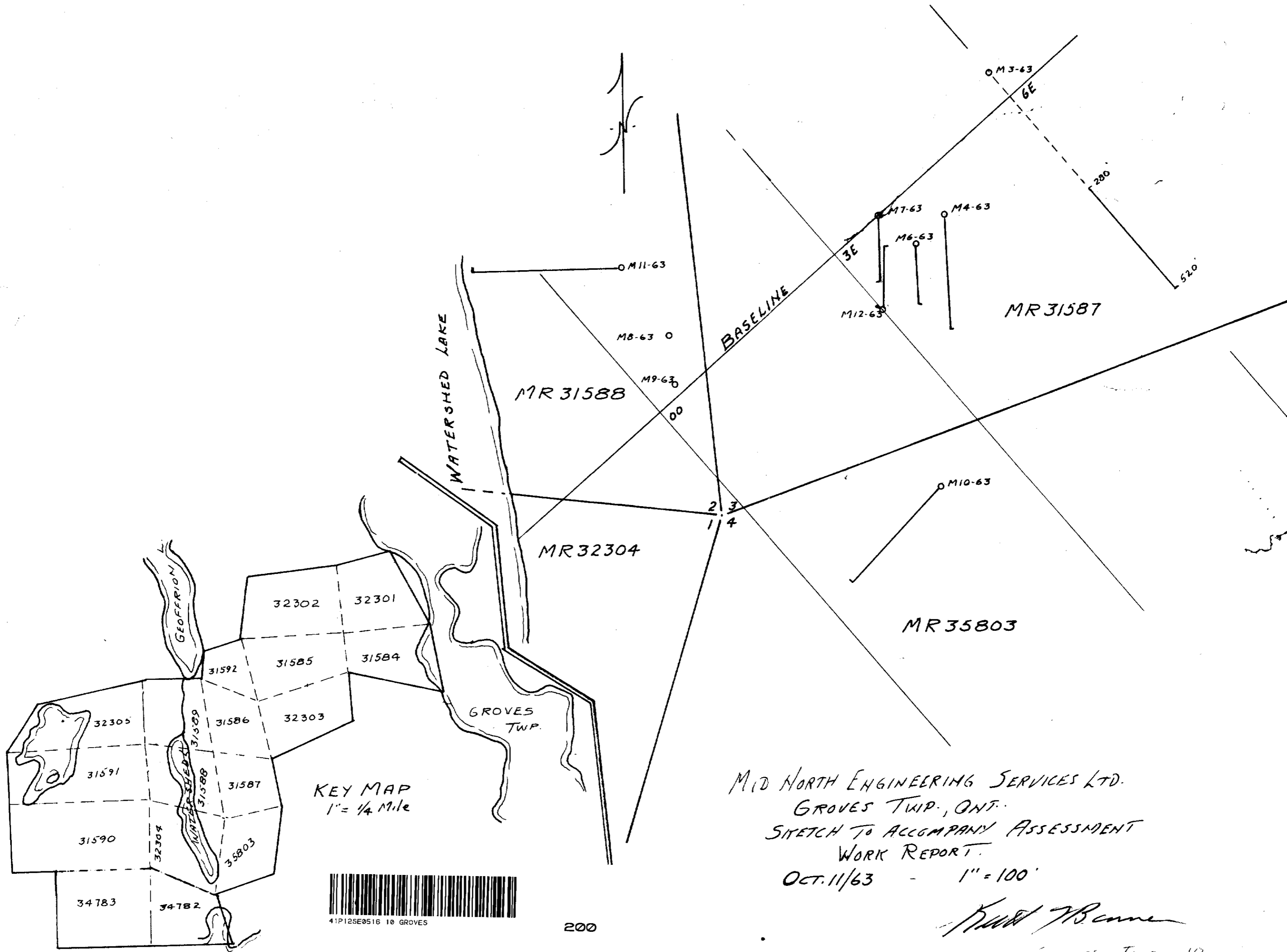
NR	NR	NR	NR
32305	31589	31586	32303
NR	NR	NR	NR
35800	31591	31588	31587
NR	NR	NR	NR
35801	31590	32304	35803
NR	NR	NR	NR
35802	34783	34782	

3

4

3

2



KEY MAP
1" = 1/4 Mile



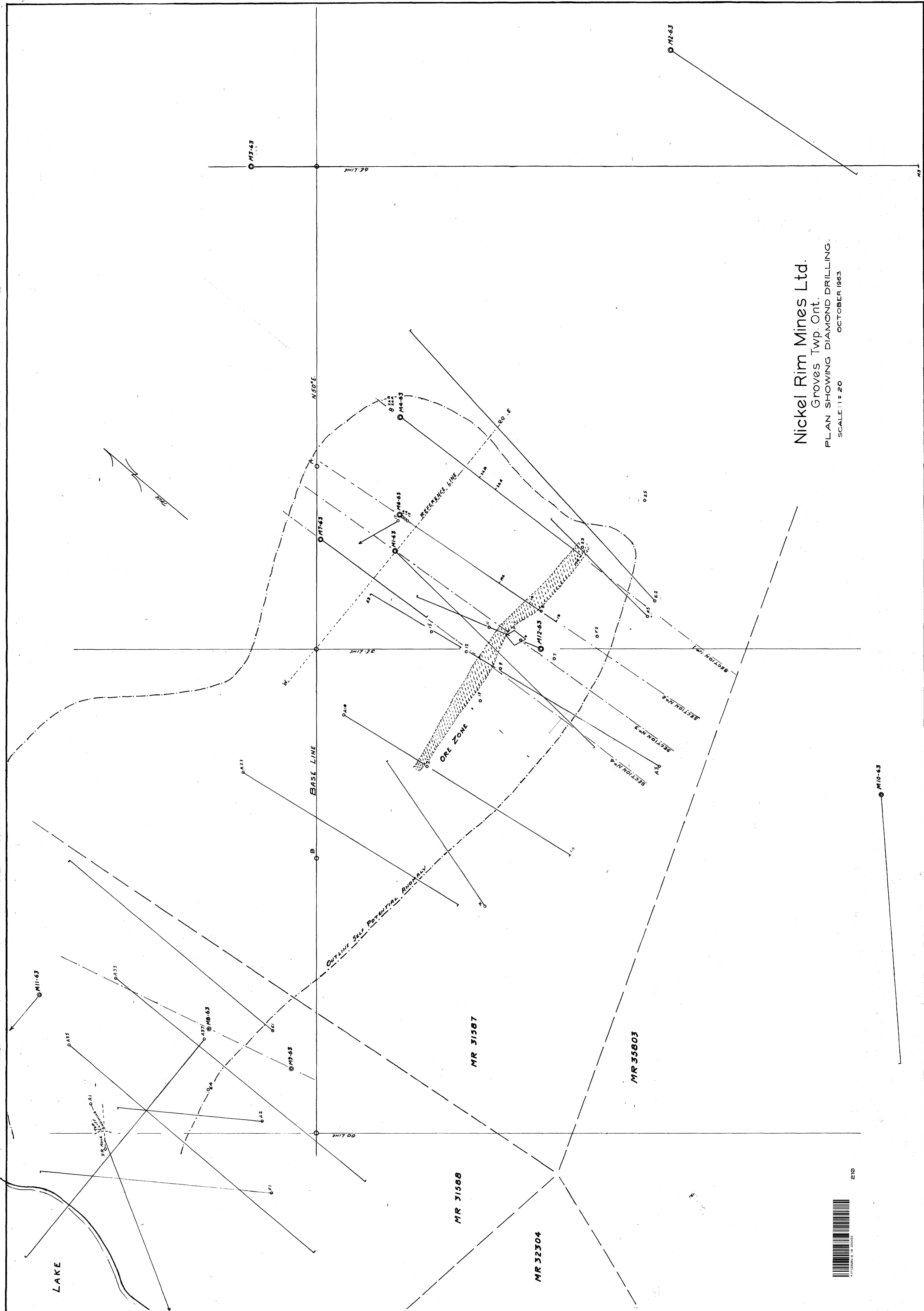
200

MID NORTH ENGINEERING SERVICES LTD.
GROVES TWP., ONT.
SKETCH TO ACCOMPANY ASSESSMENT
WORK REPORT.
OCT. 11/63 - 1" = 100'

Paul Benne

Groves Twp 10

Nickel Rim Mines Ltd.
 Groves Twp. Ont.
 PLAN SHOWING DIAMOND DRILLING.
 SCALE: 1" = 20' OCTOBER 1963



210