

D



41P12SW0020 11 BENNEWEIS

010

BENNEWEIS TOWNSHIP REPORT NO. 11

This file contains work performed by Broken Hill Exploration  
(Cravit Option) on Claims:

S. 282374	Hole # 1	March, 1971
S. 282366	Hole # 2	March, 1971
S. 282368	Hole # 3 ✓	April, 1971

# DIAMOND DRILL LOG

PROPERTY: BROKEN HILL EXPLORATION LIMITED

HOLE NUMBER: 1

LOCATION: CLAIM S-282374

DIP TESTS

Latitude: 1450 S                      Dip: 45°                      Footage                      Reading                      Corrected

Departure: 2850 W                      Depth: Ultimate 301                      Proposed 300

Elevation: Lake + 5'                      Commenced: March 7th, 1971

Azimuth: South West                      Finished: March 9th, 1971                      Logged by: *Michael Ogden*

SAMPLE NUMBER	DESCRIPTION	Cu	Ni	Au	Ag
Depth Feet					
0 - 10	Casing.				
10 - 21	Fine gabbro, grading into basalt at 20 - 27. This is really a flow centre. Has scattered fine crystals of pyrite.				
21 - 45	Basalt with pyrite as above.				
45 - 160	Quartz eye basalt. As above but with heavily scattered rice-size quartz eyes. Also fine pyrite as above. 101 - 103 = irregular quartz bands at 90° to core. 112        "        "        "        "        "        " 146 - 148 = irregular white quartz.				
160 - 223	Dacite. Grey fine grained hard rock. Slight concoidal fracture. 168 = 1/2 ft. of 10% pyrite. 165 - 170 = trace chalcopyrite in more basaltic section. 190 - 195 = siliceous section. 198 - 206 = black HB. dyke at 90°.				
223 - 254	Feldspar porphyry. Contacts gradational (40% white feldspar in dark groundmass). 238 = 3" quartz at 90°.				
254 - 301	Basalt. 268 - 282 = Shear zone @ 10° to 30° to core with irregular chunks of feldspar porphyry. 282 - 290 = Dark basalt 287 - 288 = 15% pyrite, trace chalcopyrite 284.0 - 285.0 = 10% magnetite, 3% pyrrhotite <u>Sample No. 1.</u> 285.0 - 286.0 = 10% magnetite, 5% pyrrhotite and 4% chalcopyrite. <u>Sample No. 2.</u> 286.0 - 287.2 = 5% pyrite, 2% chalcopyrite <u>Sample No. 3.</u>	0.01	Nil	TR.	TR.
301	End of hole.  Drilled by: E.R. Parcher Dia. Drilling.  <div style="text-align: right;">Signed:                      Michael Ogden</div>	0.33	0.01	TR.	TR.
		0.43	Tr.	TR.	TR.

HALEY, BROADHURST & OGDEN

#31171 *Bennet's Dyke*  
*H. Cherit*

# DIAMOND DRILL LOG

PROPERTY: BROKEN HILL EXPLORATION LIMITED

HOLE NUMBER: 2

LOCATION: CLAIM NO S-202366

DIP TESTS

Latitude: 450 ft. north of base line. Dip: 45°  
 Bearing: South Footage Reading Corrected

Departure: Line 36 West Depth Ultimate Depth 350

Elevation: 5 ft. above lake. Commenced: March 11, 1971 Proposed Depth 350

Azimuth: SOUTH Finished: March 13, 1971 Logged by: *Michael Ogden*

SAMPLE NUMBER	DESCRIPTION		
Depth feet			
0 - 10	Casing.		
10 - 67	Dacite, very fine grained, grey with frequent Qtz. stringers and bands at 45° to core.		
67 - 129	Granite, 70-80% feldspar, 20% HB and 2-5% Qtz. plus up to 1% Py. in crystals and fine stringers. 90' - rusty fracture in Qtz. at 70° and fine Py. 1/2" 100 - 1/2" Qtz. vein.		
129 - 142	Dacite, in part mixed with granite, gradational contact. 138 - 140 - Silicious and contorted.		
142 - 330	Granite as above, same pyrite. 197 - 1/8" Py. band @ 35° 210 - 1/4 " " " " 230 - 265 Green alteration so as to lose distinct granitic grain.		
330 - 350	Vague granite, grey altered still with fine pyrite. 332 - 334. Basalt dyke at 30° to core.		
350	End. of Hole.		

# DIAMOND DRILL LOG

PROPERTY: Broken Hill Exploration Limited

HOLE NUMBER: 3

LOCATION: Claim No. S-282368

DIP TESTS

Latitude: 300 ft. North of base line. Dip: 45° Footage Reading Corrected

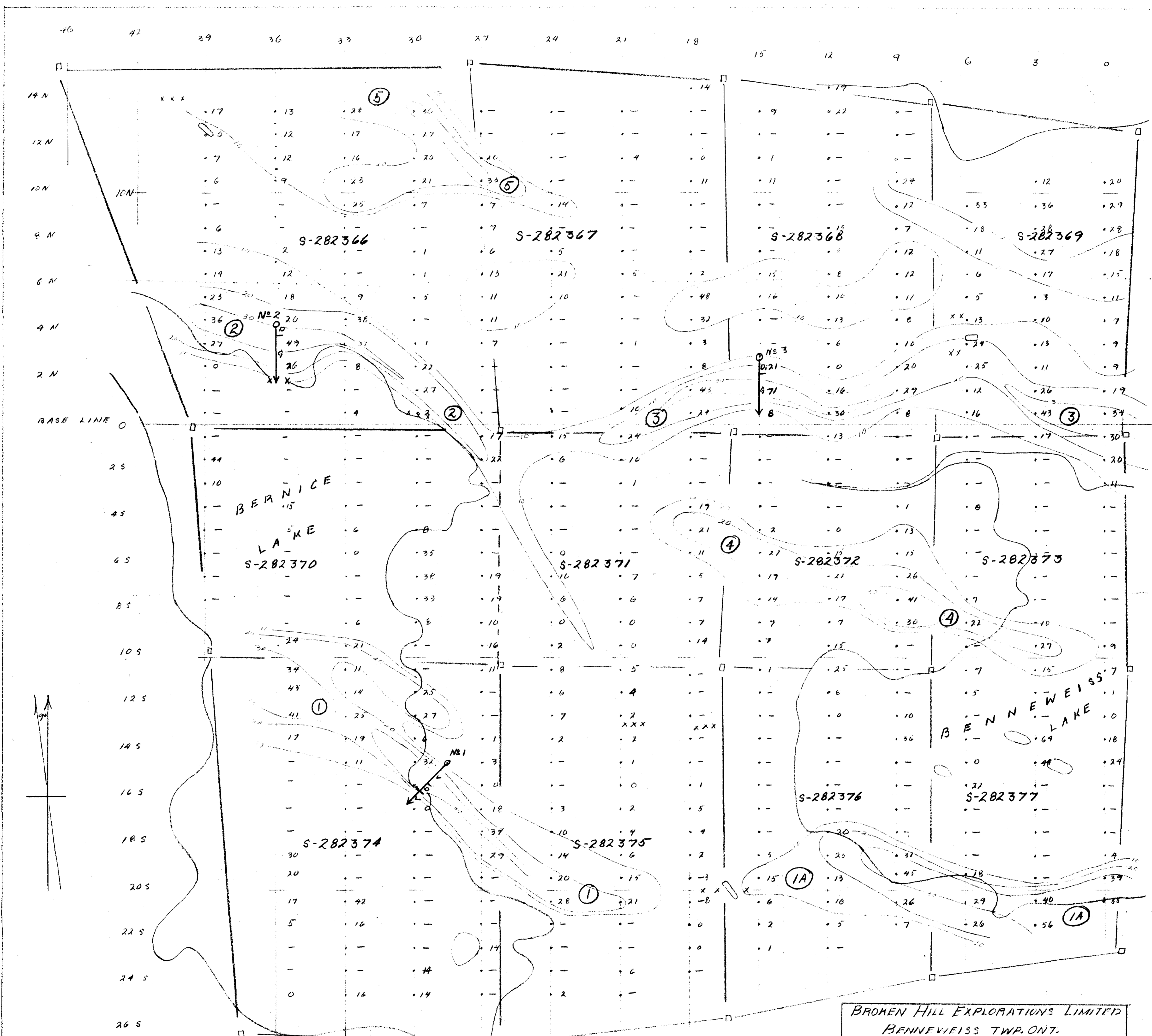
Departure: On line 1500 W Depth: 350

Elevation: At Creek level Commenced: April 1, 1971

Azimuth: Grid South Finished: April 5, 1971 Logged by: Michael Ogden

SAMPLE NUMBER	DESCRIPTION	Cu	Au
0 - 32	Casing.		
32 - 109	Diabase dyke, medium grained, dark mauve to black with white spots, even textured rock of 50/50 mafic and felsic minerals. Final contact <sup>CHILLED</sup> drilled for 3 feet. Contact <del>angle</del> shattered. Carries a little scattered fine pyrite.		
109 - 309	Pink granite, uneven textured, coarse grained, granite of about 10% quartz. The first 5 - 10 feet is without quartz.  112½ : 6 inch shear zone at 35° to core.  119½ - 121 : <sup>CHILLED</sup> drilled diabase dyke at 30° to 60° to core.  150 on, about 1% pyrite in scattered blebs and stringers.  297 - 299 : diabase dyke at 30° to core.		
309 - 311	Diabase dyke at 60°.		
311 - 350	Grey granite, massive, even textured rock with scattered blue quartz eyes. It carried about 1% disseminated pyrite and the occasional few bits of chalcopyrite.		
343 - 344	Normal grey granite with very little mineralization.  Sample # 1 = 0.01% copper Trace gold.	0.01	TR.
344.0 - 344.5	This half foot section of core contains one 1/4" wide vein of chalcopyrite at 60° to core.  Sample # 2 = 0.50% copper Trace gold.	0.50	TR.
350'	End of hole.		

*Michael Ogden*



**LEGEND**

- V VOLCANICS, GREENSTONE
- D DACITE
- G GRANITE
- DI DIABASE DYKE

- XX MINERAL SHOWING
- TRENCH OR PIT
- CLAIM POST
- → DRILL HOLE
- ② ANOMALY No. 2

BROKEN HILL EXPLORATIONS LIMITED  
 BENNEWEISS TWP. ONT.  
 FILTERED DIP ANGLE DATA OF  
 RONKA EM-16 SURVEY  
 BY W.R. MILLER  
 DATA REDUCED & MAP BY MICHAEL CRIDER  
 FEB. 11, 1971 SCALE: 1" = 200 FT.

REVISED APRIL 23 BY M. GARDNER.

#31/71 H. Court  
 Benneweiss Twp.

