

Don



41P12SW0021 12 BENNEWEIS

010

BENNEWEIS TOWNSHIP REPORT NO. 12

This file contains work performed by Safari Exploration on Claims.

S. 285158

Hole # S-1

March, 1971

SAFARI EXPLORATIONS LIMITED
DIAMOND DRILL PROGRAMME
BENNEWEISS TOWNSHIP, ONTARIO

May 11, 1971

#40171 Benneweiss Exp
Safari Expl. Ltd.

Safari Explorations Limited

Diamond Drill Programmes

Benneweiss Township, Ontario

SUMMARY

The best anomaly in the recent Induced Polarization Survey (I.P.) occurred on Benneweiss Lake. A hole was spotted to test this anomaly from the ice.

This hole was drilled vertically and most of the hole was in a lightly mineralized quartz-feldspar porphgry. This rock unit was sheared and minor amounts of pyrite and chalcopyrite were present. This is an adequate explanation for the I.P. anomaly. The mineralization is not economic. No further work is recommended at the present time.

Respectfully submitted,

Tom Gledhill

Tom Gledhill, B.A., P.Eng.

May 11, 1971.



Drill Core Log

Property Safari Explorations Limited

Hole No. S-1

Latitude 32 + 00S Bearing Vertical Page 1

Departure 16 + 00E (on line) Dip 90° at collar - no dip test

Location Benneweiss Lake Length 598' Core Size AXT
Benneweiss Twp., Sudbury M.D.

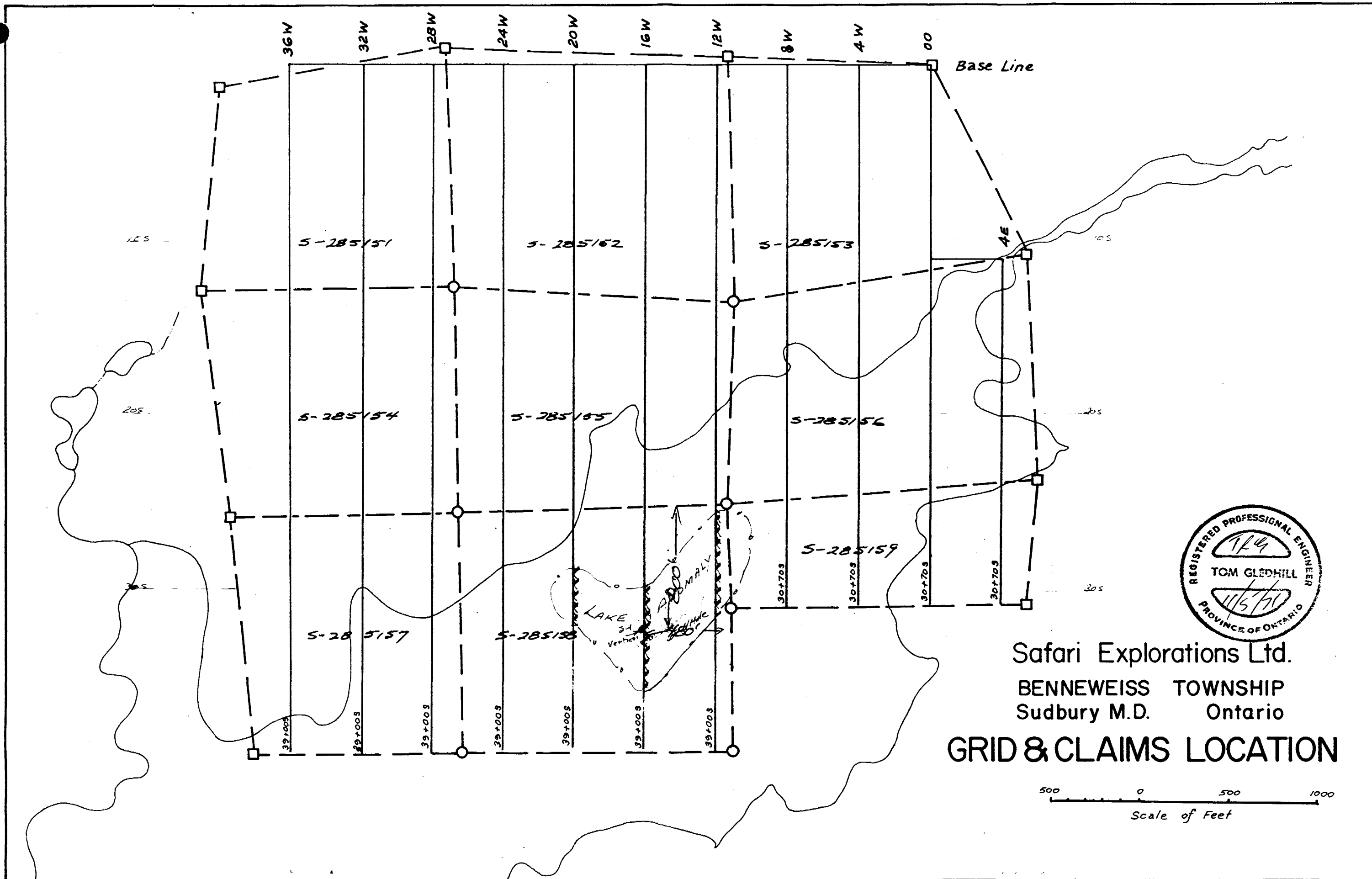
Elevation ice surface Started March 19, 1971 Completed March 31, 1971

FROM	TO	FORMATION	SAMPLE NO.	LENGTH FT.
0	81.0	Casing		
<u>81.0</u>	<u>185.0</u>	<u>Quartz Feldspar Porphyry - minor blebs of pyrite and chalcopyrite</u>		
<u>185.0</u>	<u>196.5</u>	<u>Greywacke - dark</u>		
<u>196.5</u>	<u>478.0</u>	<u>Quartz-Feldspar Porphyry - sheared minor blebs of pyrite and chalcopyrite</u>		
<u>478.0</u>	<u>513.0</u>	<u>Greywacke - light coloured</u>		
<u>513.0</u>	<u>598.0</u>	<u>Quartz-Feldspart Porphyry minor blebs of pyrite & chalcopyrite</u>		
350.5	352.0	Quartz Vein		
350	390	Heaviest sulphides - pyrite and chalcopyrite less than 1/2% combined		
	419	flects of chalco.		
	598	end of hole		



99 % CORE RECOVERY

Drilled by Elmer Pancher Logged by Tom Gledhill



36W 32W 28W 24W 20W 16W 12W 8W 4W 00

Base Line

S-285151

S-285152

S-285153

S-285154

S-285155

S-285156

S-285159

S-285157

S-285158

LAKE

RAIL



Safari Explorations Ltd.
 BENNEWEISS TOWNSHIP
 Sudbury M.D. Ontario

GRID & CLAIMS LOCATION

