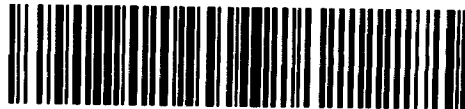


Done



41P125W0063 34 CHESTER

010

DIAMOND DRILLING

Township: Chester

Report No: 34

WORK PERFORMED FOR: Nu-Stuart Resources Corporation

RECORDED HOLDER: SAME AS ABOVE [x]

: OTHER []

<u>CLAIM NO.</u>	<u>HOLE NO.</u>	<u>FOOTAGE</u>	<u>DATE</u>	<u>NOTE</u>
P 808470	NS-85-1	504'	July/85	(1)
P 809083	NS-85-2	503'	July/85	(1)
P 808466	NS-85-3	311'	July/85	(1)

1318'

NOTES: (1) #354-85

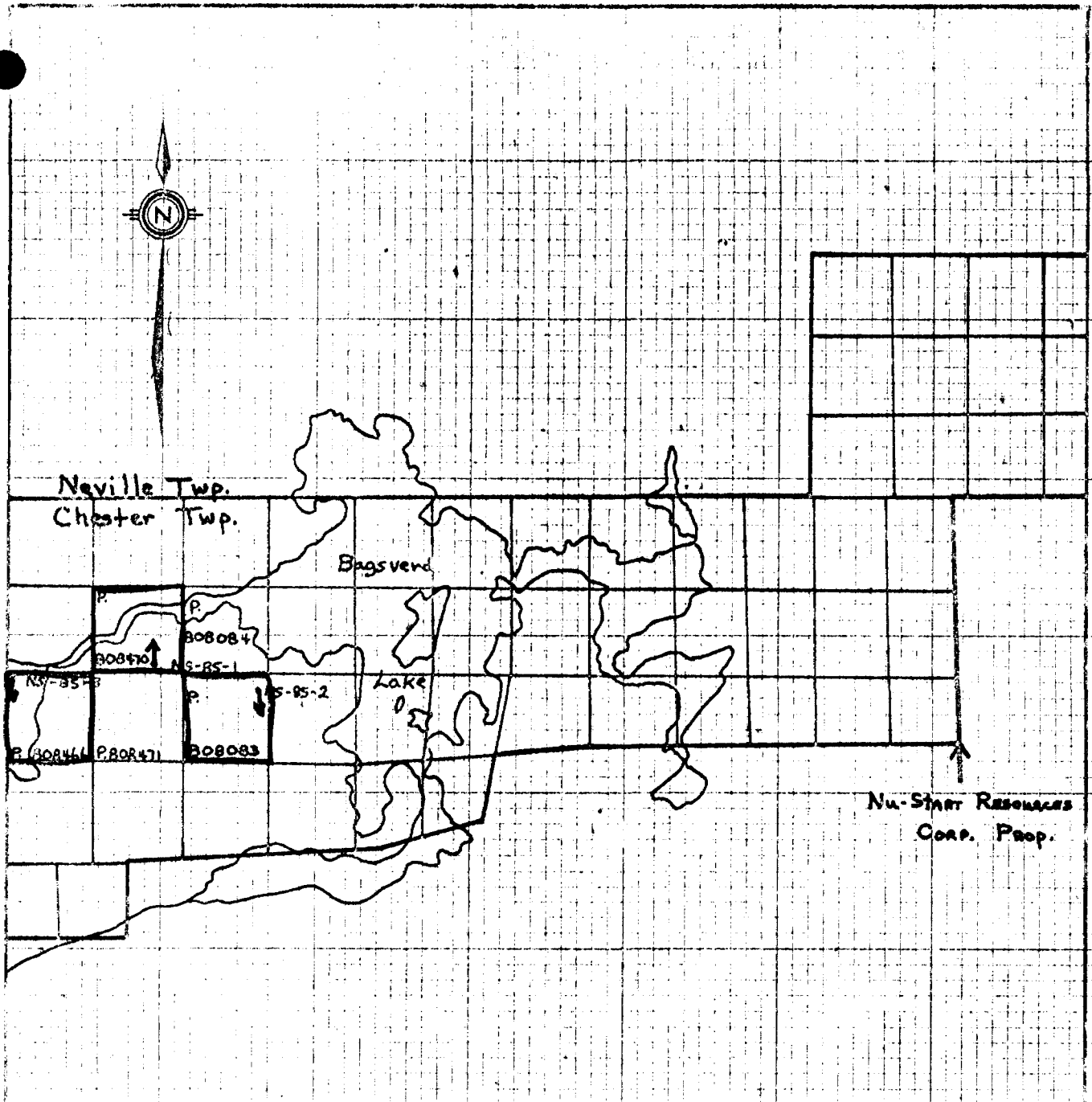
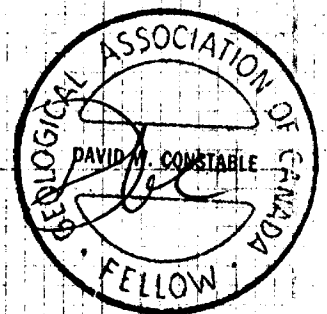


Figure 1.

NU-START RESOURCES CORP.

LOCATION SKETCH

0 1/2 mile 1 mile 1 1/2 mile



DIAMOND DRILL RECORD

LOGGED BY D. Constable

Constable Consulting Inc.

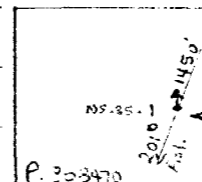
PROPERTY Nu-Start Resources Corporation

D.D.H. No. NS-85-1 PAGE 1 OF 2

LATITUDE - BEARING OF HOLE 0 (Ast.) STARTED July 14/85

DEPARTURE - DIP OF HOLE -50° COMPLETED July 18/85

ELEVATION - DIP TESTS Nil DEPTH 504.0'



CLAIM No. P 808470

DIRECTION AND DISTANCE FROM

NE. CLAIM POST

B.Q. CORE

FOOTAGE		DESCRIPTION	SAMPLE No.	FOOTAGE		SAMPLE LENGTH	ASSAY						
FROM	TO			FROM	TO								
		No casing											
0.0	504.0	Quartz-Serecite Schist											
		Grey, soft, blocky, fine-grained, well-bedded at 37° to C.A.											
		Nil to trace sulfides as disseminates. Rock is composed of											
		40% quartz, 25% serecite and 30% chlorite and 5% carbonates.											
		Some signs of slumping or folding are present, very open folds.											
		From 102.0-102.2 white quartz vein, carbonate and minor pyrite.											
		From 107.0-108.7 white quartz vein, lined with carbonate and											
		minor pyrite. Conformable to schistosity.											
		By 176.0 rock becomes darker.											
		From 228.3-228.5 small white quartz vein.											
		From 244.0-249.5 black chert bed with 2-3% fine-grained pyrite	6329	242.0	244.0	2.0	0.002						
			6330	244.0	246.0	2.0	0.003						
			6331	246.0	248.0	2.0	0.003						
			6332	248.0	249.6	1.6	0.005						

DIAMOND DRILL RECORD

LOGGED BY D. Constable

Constable Consulting Inc.

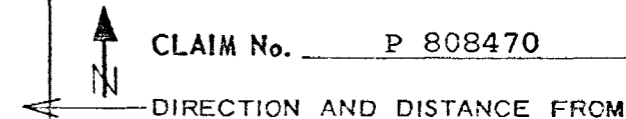
PROPERTY Nu-Start Resources Corporation

D.D.H. No. NS-85-1 PAGE 2 of 2

LATITUDE - BEARING OF HOLE 0 (Ast.) STARTED July 14/85

CLAIM No. P 808470

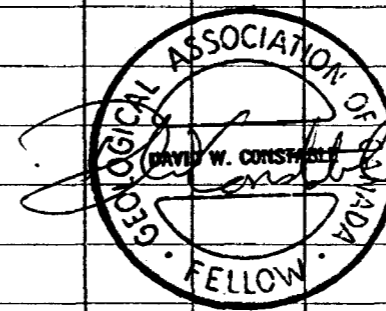
DEPARTURE - DIP OF HOLE -50° COMPLETED July 18/85



ELEVATION - DIP TESTS Nil DEPTH 504.0'

NE. CLAIM POST

FOOTAGE		DESCRIPTION	SAMPLE No.	FOOTAGE		SAMPLE LENGTH	OZ Au/ton	ASSAY		
FROM	TO			FROM	TO					
		From 382.20-387.75 serictic tuff with beds of pyrite (1-2%).	6341	382.2	383.8	1.6	Tr			
		S1 is at 65° to C.A.	6342	383.8	385.5	1.7	Tr			
		By 437.0 signs of slump on structural features. Fold axes								
		90° to C.A.								
		From 464.0-464.5 quartz vein. No mineralization.								
		From 465.2-465.8 cross bedding and other sedimentary features.								
		End hole NS-85-1 is at 504.0								



DIAMOND DRILL RECORD

LOGGED BY D. Constable

Constable Consulting Inc.

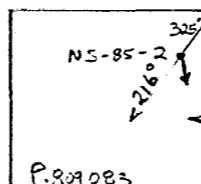
PROPERTY Nu-Start Resources Corporation

D.D.H. No. NS-85-2 PAGE 1 of 2

LATITUDE - BEARING OF HOLE 170° STARTED July 18/85

DEPARTURE - DIP OF HOLE -50° COMPLETED July 22/85

ELEVATION - DIP TESTS NIL DEPTH 503.0



CLAIM No. P 809083

DIRECTION AND DISTANCE FROM
NE. CLAIM POST

B.Q. CORE

FOOTAGE		DESCRIPTION	SAMPLE No.	FOOTAGE		SAMPLE LENGTH	OZ Au/ton	ASSAY	
FROM	TO			FROM	TO				
		On Bedrock. No casing.							
o.o	212.5	Intermediate Tuff							
		Green-grey, well-bedded at 52° to C.A., soft, blocky and chloritic-sericitic. All rock units extremely carbonated. Traces of pyrite (disseminates)							
		By 45.0' onwards clear evidence of stretched fragments in rock.							
		From 70.6-71.3 white quartz-carbonate vein.	6337	70.6	71.3	0.7	Tr		
		From 86.2-86.5 white quartz-carbonate vien.							
		At 118.0 slump or structural features.							
		From 150.7-164.1 white quartz-carbonate vein. Stockwork.	6334	150.7	154.8	4.1	0.027		
		Unmineralized.	6335	154.8	159.7	4.9	Tr		
			6336	159.7	164.1	4.4	Tr		
		From 166.3-167.8 again a white quartz-carbonate vein. Stockwork	6340	166.4	167.9	1.5	0.004		

DIAMOND DRILL RECORD

LOGGED BY D. Constable

Constable Consulting Inc.

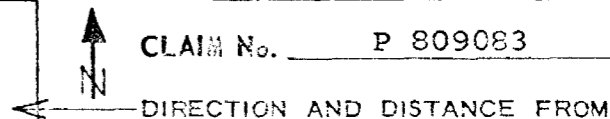
PROPERTY Nu-Start Resources Corporation

D.D.H.No. NS-85-2 PAGE 2 OF 2

LATITUDE - BEARING OF HOLE 170° STARTED July 18/85

CLAIM No. P 809083

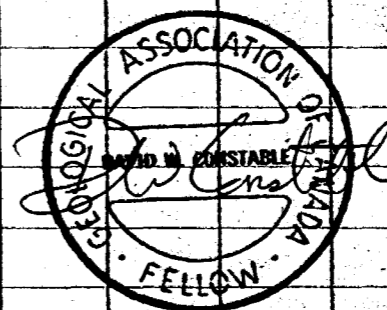
DEPARTURE - DIP OF HOLE -50° COMPLETED July 22/85



ELEVATION - DIP TESTS NIL DEPTH 503.0

NE. CLAIM POST

FOOTAGE		DESCRIPTION	SAMPLE No.	FOOTAGE		SAMPLE LENGTH	OZ Au/ton	ASSAY		
FROM	TO			FROM	TO					
		From 204.6-206.8 white quartz-carbonate vein. Stockwork	6338	204.6	206.8	2.2	Tr			
			6339	208.0	211.1	3.1	Tr			
212.5	492.6	Diabase dyke. Dark green, soft, massive, unmineralized, fine-grained.								
492.6	503.0	Intermediate Tuff Green, soft, blocky, well-bedded at 38° to C.A. Nil to traces of pyrite.								
		End of hole NS-85-2 is at 503.0'								



DIAMOND DRILL RECORD

LOGGED BY D. Constable

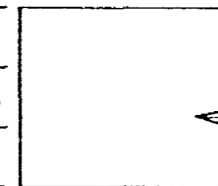
CONSTABLE CONSULTING INC.

PROPERTY NU-START RESOURCES CORPORATION

D.D.H. No. NS-85-3

PAGE 1/2

LATITUDE --- BEARING OF HOLE 180⁰ (Ast.) STARTED July 22, 1985
 DEPARTURE --- DIP OF HOLE -50⁰ COMPLETED July 24, 1985
 ELEVATION --- CHIP TESTS nil DEPTH 311.0'



CLAIM No. P-808466

DIRECTION AND DISTANCE FROM
NE. CLAIM POST

B.Q. CORE

FOOTAGE		DESCRIPTION	SAMPLE No.	FOOTAGE		SAMPLE LENGTH	ASSAY				
FROM	TO			FROM	TO		Au				
		ON BEDROCK					oz/ton				
0.0	311.0	Felsic Tuff									
		Pink to tan-grey, soft, blocky, sericitic and well-bedded at 43° to CA. Trace to nil sulfides. Whole unit is intensely carbonated and in places hematized.									
		From 0.0 - 12.4' Pink-red hematized rock with traces of pyrite.									
		From 41.0 - 44.4' Pink hematized rock.									
		From 67.0 - 68.7' Pink hematized rock with 1% finely disseminated pyrite.	6333	67.0	68.7	1.7	Tr				

DIAMOND DRILL RECORD

LOGGED BY D. Constable

CONSTABLE CONSULTING INC.

PROPERTY NU-START RESOURCES CORPORATION

D.D.H. No. NS-85-3

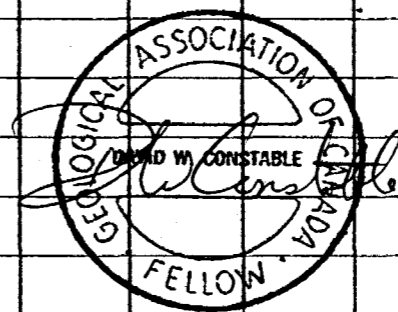
PAGE 2/2

LATITUDE ----- BEARING OF HOLE 180° (Ast.) STARTED July 22, 1985
 DEPARTURE ----- DIP OF HOLE -50° COMPLETED July 24, 1985
 ELEVATION ----- DIP TESTS nil DEPTH 311.0'



CLAIM No. P-808466
 DIRECTION AND DISTANCE FROM
 NE. CLAIM POST

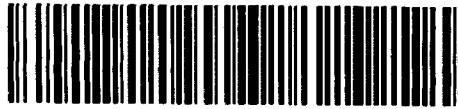
FOOTAGE		DESCRIPTION	SAMPLE No.	FOOTAGE		SAMPLE LENGTH	ASSAY						
FROM	TO			FROM	TO								
		From 172.0 - 191.6' irregular, narrow veinlets of white quartz carbonate. Barren of sulfides. Comprise 1-2% of the core.											
		From 241.7 - 258.9' rock is slightly more carbonated and reddish.											
		From 296.3 - 298.1' distinct beds of fragmentals.											
		<u>END OF HOLE NS-85-3 is at 311.0'</u>											





#354/85

Minin



41P125W0063 34 CHESTER

900

Name and Postal Address of Recorded Holder

Nu-Start Resources Corporation "Neville & Chester Vuy"

#1701-701 W. Georgia St., P.O. Box 10080, Pacific Centre, Vancouver, B.C.

Summary of Work Performance and Distribution of Credits

V7Y 1B6

Total Work Days Cr. claimed 1318	Mining Claim		Work Days Cr.	Mining Claim		Work Days Cr.	Mining Claim		Work Days Cr.
	Prefix	Number		Prefix	Number		Prefix	Number	
For Performance of the following work. (Check one only) <input type="checkbox"/> Manual Work <input type="checkbox"/> Shaft Sinking Drifting or other Lateral Work. <input type="checkbox"/> Compressed Air, other Power driven or mechanical equip. <input type="checkbox"/> Power Stripping <input checked="" type="checkbox"/> Diamond or other Core drilling <input type="checkbox"/> Land Survey	P	807255	20.3	P	826385	20.3	P	826393	20.3
		807256	20.3		826386	20.3		826394	
		807257	20.3		826387	20.3		826395	
		807258	20.3		826388	20.3		826396	
		826381	20.3		826389	20.3		826397	20.3
		826382	20.3		826390	20.3			
		826383	20.3		826391	20.3			
		826384	20.3		826392	20.3			

(All these claims are in Neville Township) Cont'd Attached

All the work was performed on Mining Claim(s): P-808466 (311), P-808470 (504), P-809083 (503) List..

Required Information eg: type of equipment, Names, Addresses, etc. (See Table Below)

All drilling by Triangle Drilling Company
106 Fielding Road
Lively, Ontario

RECORDED
OCT - 4 1985

All Core: BQ Core

Dates of Work: July 14 to July 24, 1985

RECEIVED
OCT - 4 1985

ONTARIO GEOLOGICAL SURVEY
ASSESSMENT FILES
RESEARCH OFFICE
OCT 15 1985
RECEIVED

Date of Report: Sept. 12, 1985
Recorded/Holder of Agent (Signature): [Signature]

Certification Verifying Report of Work

I hereby certify that I have a personal and intimate knowledge of the facts set forth in the Report of Work annexed hereto, having performed the work or witnessed same during and/or after its completion and the annexed report is true.

Name and Postal Address of Person Certifying
David Constable, Constable Consulting Inc., 10 Kingston Court,
Sudbury, Ontario P3A 1C9
Date Certified: Sept. 12/85
Certified by (Signature): [Signature]

Table of Information/Attachments Required by the Mining Recorder

Type of Work	Specific Information per type	Other information (Common to 2 or more types)	Attachments
Manual Work	Nil	Names and addresses of men who performed manual work/operated equipment, together with dates and hours of employment.	Work Sketch: these are required to show the location and extent of work in relation to the nearest claim post.
Shaft Sinking, Drifting or other Lateral Work			
Compressed air, other power driven or mechanical equip.	Type of equipment	Names and addresses of owner or operator together with dates when drilling/stripping done.	
Power Stripping	Type of equipment and amount expended. Note: Proof of actual cost must be submitted within 30 days of recording.		
Diamond or other core drilling	Signed core log showing; footage, diameter of core, number and angles of holes.		Work Sketch (as above) in duplicate
Land Survey	Name and address of Ontario land surveyor.	Nil	Nil

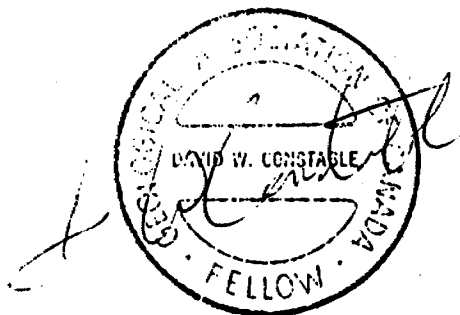
Nu-Start Resources Corporation

1985 Diamond Drilling

<u>Prefix</u>	<u>Claim Number</u>	<u>Work Days Cr.</u>	<u>Prefix</u>	<u>Claim Number</u>	<u>Work Days Cr.</u>
P-	808463	20.3	P-	809092	20.3
	808464	20.3		809093	20.3
	808465	20.3		808508	20.3
	808466	20.3		808509	20.3
	808467	20.3		808510	20.3
	808468	20.3		808511	20.3
	808469	20.3		808512	20.3
	808470	20.3		808513	20.3
	808471	20.3		808514	20.3
	809081	20.3		808515	20.3
	809082	20.3		808516	20.3
	809083	20.3		808517	20.3
	809084	20.3		808518	20.3
	809085	20.3		808519	20.3
	809086	20.3		808520	20.3
	809087	20.3		808521	20.3
	809088	20.3		809071	20.3
	809089	20.3		809072	20.3
	809090	20.3		809073	20.3
P-	809091	20.3		809074	20.3
				809075	20.3
				809076	20.3
				809077	20.3
				809078	20.3

Total 1318 days

over 65 claims



85/36



Chester Top.

