

*Done*



DIAMOND DRILLING

010

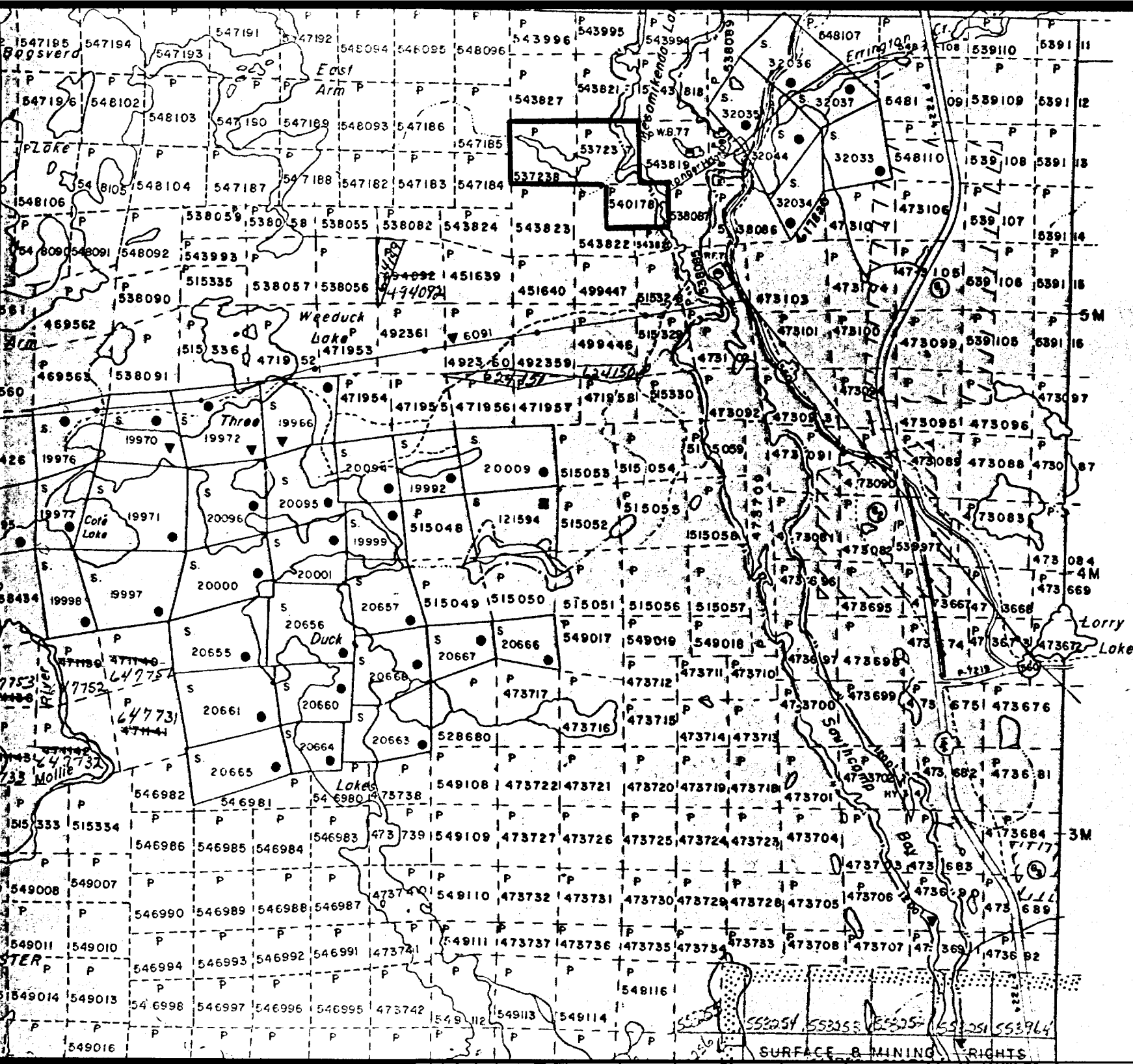
TOWNSHIP: Chester

REPORT No.: 26

WORK PERFORMED BY: Hanson Mineral Exploration

<u>CLAIM No.</u>	<u>HOLE No.</u>	<u>FOOTAGE</u>	<u>DATE</u>	<u>NOTE</u>
P 537237	M-1	102.6	Sept/81	(1) (2) (4)
P 537238	W-1	109.6	May/82	(3) (5)
		<u>212.2</u>		

- NOTES:
- (1) #411-81
  - (2) #111-82
  - (3) #292-82
  - (4) O.M.E.P. Submittal: #OM81-5-C-34
  - (5) O.M.E.P. Submittal: OM82-5-C-77



BENNEWEISS TP. M.658

*Chester Corp. # 292-52*

# DIAMOND DRILL RECORD

HANSON MINERAL EXPLORATION LIMITED

PROPERTY

NORTH CLAIM GROUP - CHESTER TWP., ONT.

HOLE NO. M.1

SHEET NUMBER 1 of 2

SECTION FROM 0.0 TO \_\_\_\_\_

STARTED Sept. 16 | Oct. 5

380 ft. East and

~~XXXXXX~~ 380 ft North of Post No. 3

DATUM \_\_\_\_\_

COMPLETED Sept. 25 | Oct. 7/81

Claim P. 537237

DEPARTURE \_\_\_\_\_

BEARING 30°

ULTIMATE DEPTH 120.6 ft.

ELEVATION \_\_\_\_\_

DIP -56° Core size 7/8 in dia.

PROPOSED DEPTH \_\_\_\_\_

DEPTH FEET	FORMATION	SAMPLE NO.	WIDTH OF SAMPLE	GOLD \$	SLUDGE GOLD \$
0.0 - 47.7	Greywacke; fine to medium texture; narrowly banded at 35° to core; gray to light grayish white in colour; occasional short sections with a few bluish quartz eyes; an occasional small pyrite crystal				
11.7 - 11.8	White quartz; barren; slight fracturing				
12.0 - 12.2	White quartz; " " "				
23.8 - 24.9	White quartz; some fracturing with thin chloritic coating on some fractures	M.1-1	1.1	Nil	
43.7 - 47.7	Wavy shearing at 20° to core; numerous thin irregular white carbonate seams along shear planes; some chloritization; an occasional small pyrite crystal				
47.7 - 52.0	Chlorite schist; 10% thin white carbonate seams to 1/4 in. thick	M.1-2	4.3	Nil	
52.0 - 68.3	Brecciated and silicified greywacke; very hard; bedding at 20° to core				
68.3 - 75.1	Chert; dark brownish red in colour; very hard; some irregular fracturing; few small pyrite crystals				
72.0 - 72.3	Chlorite schist				
73.2 - 74.3	Chlorite schist; contacts at 10° and 30° respectively				
75.1 - 95.8	Greenstone; mostly a chlorite schist; shearing at 30° to core; scattered irregular thin white carbonate				

N.M.P. TORONTO

DRILLED BY I.K. Lytle

SIGNED I.K. Lytle

# DIAMOND DRILL RECORD

HANSON MINERAL EXPLORATION LIMITED

PROPERTY

NORTH CLAIM GROUP - CHESTER TWP., ONT.

HOLE NO. M.1

SHEET NUMBER 2 of 2

SECTION FROM 95.8 TO 120.6

STARTED \_\_\_\_\_

LATITUDE \_\_\_\_\_

DATUM \_\_\_\_\_

COMPLETED \_\_\_\_\_

DEPARTURE \_\_\_\_\_

BEARING \_\_\_\_\_

ULTIMATE DEPTH \_\_\_\_\_

ELEVATION \_\_\_\_\_

DIP \_\_\_\_\_

PROPOSED DEPTH \_\_\_\_\_

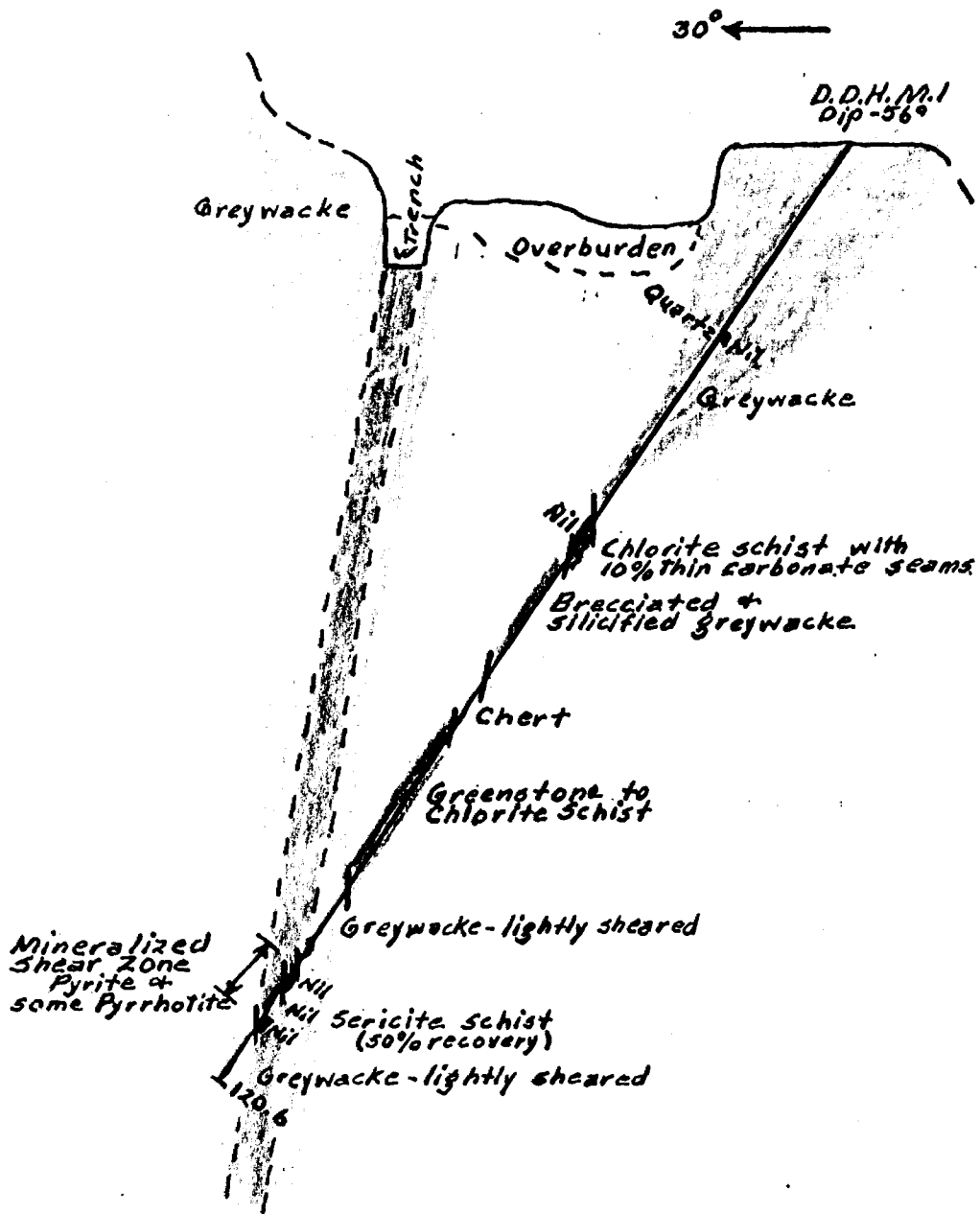
DEPTH FEET	FORMATION	SAMPLE No.	WIDTH OF SAMPLE	GOLD g	SILVER g		
	seams along some shear planes; an occasional small pyrite crystal						
95.8 - 105.1	Greywacke; light ly sheared at 35° to core; thin bedding; partly carbonated						
105.1 - 107.5	Sheared greywacke; shearing at 45° to core; considerable sericite; sparse fine pyrite and pyrrhotite disseminated and along some shear planes	M.1-3	2.4	Nil	Nil		
107.5 - 111.1	Sericite schist; fine pyrite and pyrrhotite disseminated and as occasional thin seams along some shear planes; very soft; core recovery 50%; sludge from this section indicated considerably more sulphides than seen in recovered core	M.1-4	3.6	Nil	Nil		
	Sludge	M.1-6	3.6	Nil	Nil		
111.1 - 112.9	As from 105.1 - 1-7.5	M.1-5	1.8	Nil	Nil		
112.9 - 120.6	Greywacke; very lightly sheared at 35° to 45° to core; an occasional small pyrite crystal						
120.6	End of hole						

N.M.P. TORONTO

DRILLED BY \_\_\_\_\_

SIGNED

*S. H. Lyette*



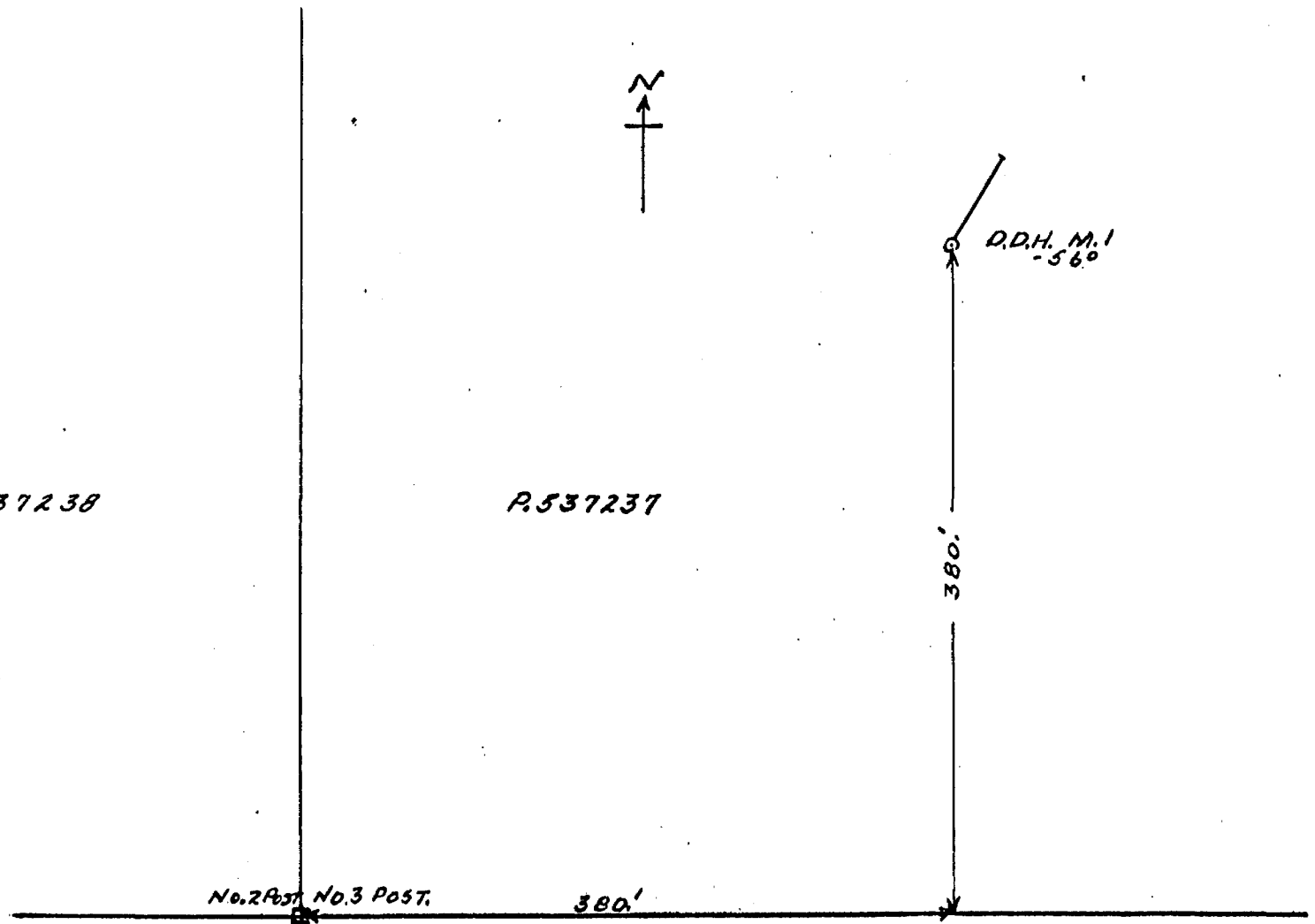
D.D.H. M.I  
MAIN ZONE  
NORTH CLAIM GROUP  
CHESTER TWP.

Scale: 1in = 20ft.

HANSON MINERAL  
EXPLORATION LIMITED  
Nov. 21, 1981. P.K.

P. 537238

P. 537237



HANSON MINERAL EXPLORATION LIMITED

LOCATION OF D.D.H. M.1

CHESTER TWP. # 411 - 81

Scale: 1 in. = 100 ft.

Sept. 28, 1981.

L.K.L.



# DIAMOND DRILL RECORD

PROPERTY HANSON MINERAL EXPLORATION LIMITED

HOLE NO. W - 1

CHESTER TWP. - NORTH GROUP  
SECTION FROM 0 TO 109.6

SHEET NUMBER 1 of 1  
LOCATION 680 ft. E. and 215 ft. S. of  
~~XXXXXXXX~~ LATITUDE Post No. 4, claim P. 537238

STARTED May 28, 1982

DATUM \_\_\_\_\_

COMPLETED June 18, 1982

~~XXXXXXXX~~ DEPARTURE \_\_\_\_\_

BEARING 354°

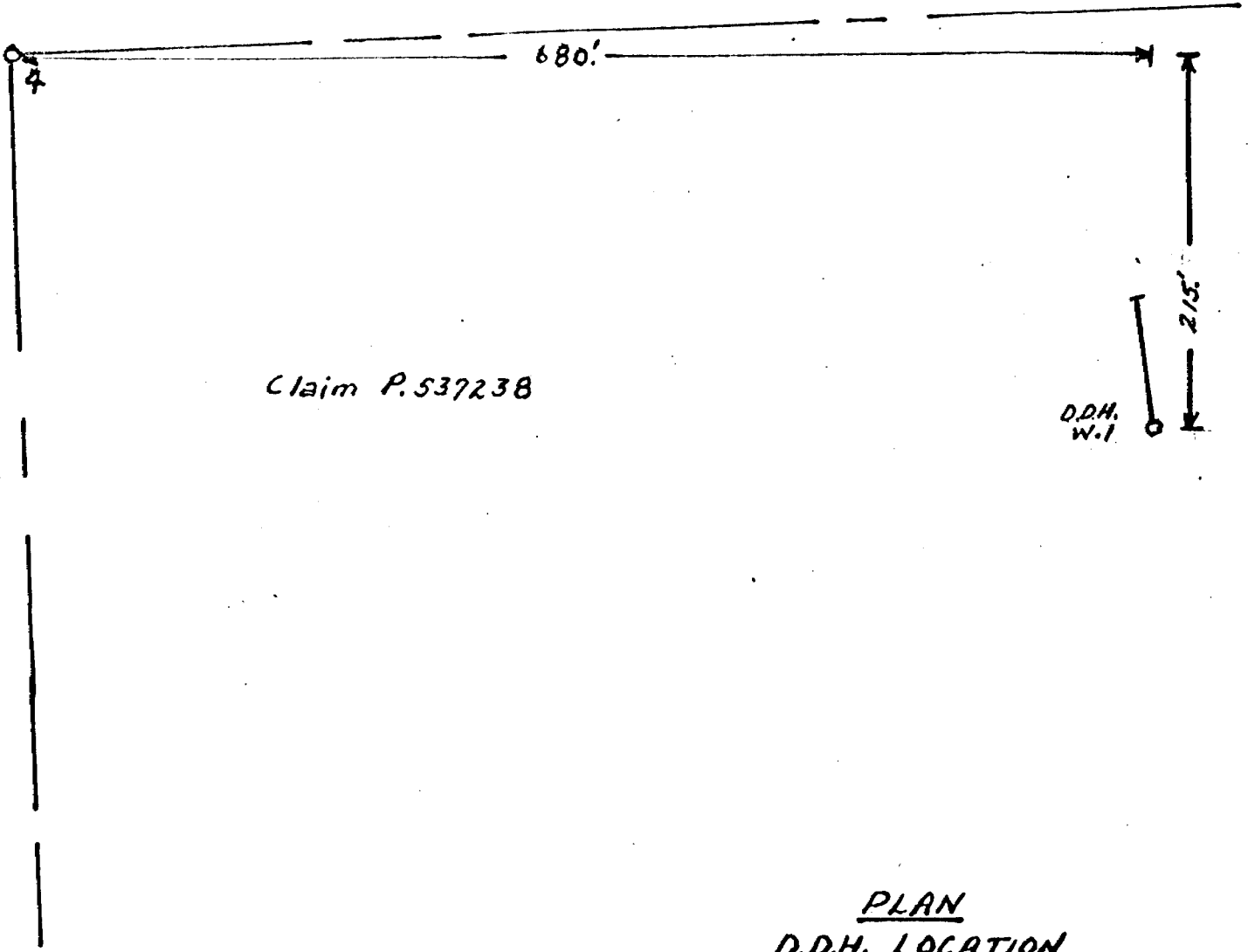
ULTIMATE DEPTH 109.6'

ELEVATION \_\_\_\_\_

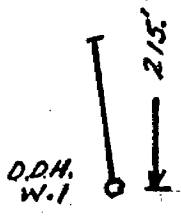
DIP - 45° CORE 7/8 in. dia.

PROPOSED DEPTH \_\_\_\_\_

DEPTH FEET	FORMATION	SAMPLE NO.	WIDTH OF SAMPLE	GOLD \$	SLUDGE GOLD \$
0.0 - 23.0	Greywacke; fairly fine texture; gray colour; narrow foliation at 45° to core; at 21.' foliation at 60°				
23.0 - 27.0	Aplite dike; conformable				
27.0 - 74.4	Greywacke; as from 0.0 - 23.0; foliation at 55° to core; some small quartz eyes; an occasional small pyrite crystal; at 50' foliation at 50° to core.				
74.4 - 77.7	Quartz; white; irregularly fractured; thin chlorite filling along some fractures, also some sericite	W.1 - 1	3.3'	Nil	
77.7 - 80.5	Greywacke; partially silicified; irregularly sheared at 60° to core; some thin seams and blebs of rusty carbonate; slight fine pyrite	W.2 - 2	2.8'	Nil	
80.5 - 104.6	Chlorite schist; shearing at 80° to core; very soft				
104.6 - 106.9	Quartz; white; some irregular fracturing; some chlorite as a thin filling along some fractures and as occasional small blebs; very slight fine pyrite	W.1 - 3	2.3'	Nil	
106.9 - 109.0	Chlorite schist; irregularly sheared				
109.0 - 109.6	greenstone; foliation at 40° to core				
109.6	End of hole				



Claim P. 537238



PLAN  
D.D.H. LOCATION

Scale: 1 in. = 100 ft.

Aug 12, 1982

L.K.G.