

41P12SW0093 16 CHESTER

010

Diamond Drilling

Township of CHESTER

Report No 16 X

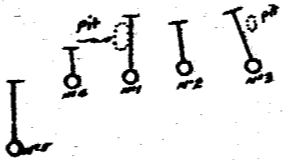
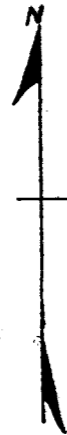
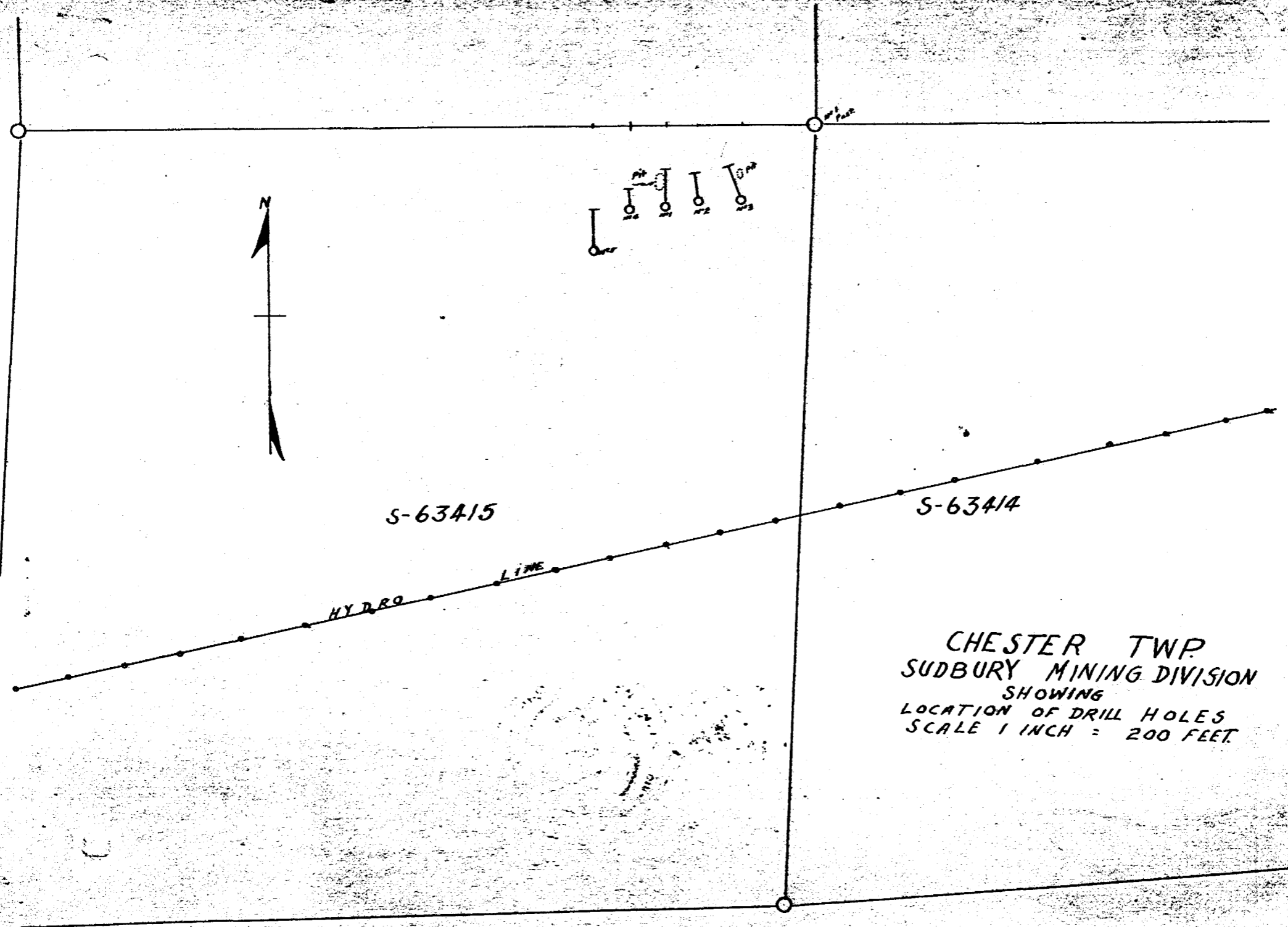
Work performed by: Martin-Bird Gold Mines Ltd.

Claim No	Hole No	Footage	Date	Note
S 63415	1.	90.5'	July/57	
	2.	70.0'	July/57	
	3	75.0'	Aug/57	
	4	58.0'	Aug/57	
	5.	96.0'	Aug/57	

389.5
1

Notes:

NO OTHER DATES AVAILABLE



S-63415

S-63414

HYDRO LINE


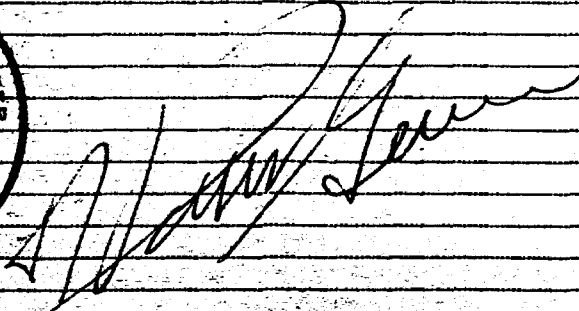
CHESTER TWP.
SUDBURY MINING DIVISION
SHOWING
LOCATION OF DRILL HOLES
SCALE 1 INCH = 200 FEET.

A. Hallam

MARTIN-BIRD GOLD MINES LIMITED

DIAMOND DRILL RECORD

Hole No. _____ Sheet No. _____ Lat. _____ Total Depth _____
 Section _____ Dep. _____ Elev. Collar _____
 Date begun _____ Bearing _____ Elev. Bottom _____
 Date finished _____ Angle _____

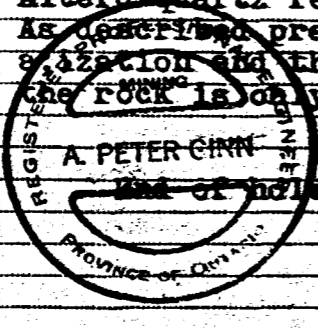
DEPTH FEET	FORMATION	SAMPLE No.	WIDTH OF SAMPLE	GOLD \$	SLUDGE GOLD \$
	NOTES ON DRILLING DONE ON MINING CLAIM S-63415..CHESTER TWP.				
	Most of the rock exposed on claim S-63415 is dark to medium grey coloured and massive. Phenocrysts of white feldspar and blue quartz. are quite abundant.				
	The purpose of the drilling was to sample a zone of alteration which cuts through the normal rock type which is described above. The zone of alteration is about a hundred feet wide, strikes in and west west direction and is bordered on the north and south by the normal unaltered phase with which it has gradational contacts. There are large masses of normal unaltered rock contained in the so-called altered zone. The silicified and sericitized altered zones usually contain minor pyrite pyrrhotite and chalc.				
	The results of sampling these mineralized sections proved that they were well below ore grade.				
	The drilling was done with an X-R'y drill using XRT bits.				
	 				

MARTIN-BIRD GOLD MINES LIMITED

DIAMOND DRILL RECORD

Hole No. 1 Sheet No. _____ Lat. _____ Total Depth _____
 Section _____ Dep. _____ Elev. Collar _____
 Date begun July 1957 Bearing Mag. north. Elev. Bottom _____
 Date finished _____ Angle --45 deg.

DEPTH FEET	FORMATION	SAMPLE No.	WIDTH OF SAMPLE	GOLD		SLUDGE	
				\$	\$	GOLD \$	\$
0.0---2.0							
0.0---2.0	Collar.						
2.0---32.7	Altered Qtz.-Feld. Porphyry. As described previously; the porphyry is the same type as the host rock but here it has been altered to a paler siliceous grey colour. The blue quartz pheno are still visible but are partly masked by the fact that the rock has been silicified and sericitized. There is fine massive mineralization (mostly pyrrhotite) disseminated through this section of core.						
32.8---41.7	Altered quartz feldspar porphyry: As above but there is more chalcopyrite disseminated through the rock. There are several quartz stringers which contain an inch to an inch and a half of massive chalco and pyrrhotite.						
41.7---90.5							
41.7---90.5	Altered quartz feldspar Porphyry: As described previously but there is less mineralization and there are several sections where the rock is only slightly altered.						


 REGISTRAR GENERAL
 PROVINCE OF ONTARIO
 A PETER CHIN
 End of hole 90.5 ft.

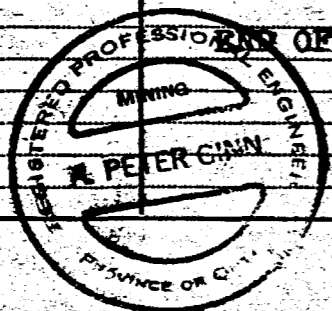
MARTIN-BIRD GOLD MINES LIMITED
DIAMOND DRILL RECORD

Hole No. Chester Exp. #2 Location 194°W and
Sheet No. Land 130'S of Pipest Total Depth _____
Section _____ Dep. Claim S63415 Elev. Collar _____
Date begun July 1957 Bearing N. 5 deg. W Mag. Elev. Bottom _____
Date finished _____ Angle --45 deg.

DEPTH FEET	FORMATION	SAMPLE No.	WIDTH OF SAMPLE	GOLD		SLUDGE	
				\$	\$	GOLD \$	\$
0.0----2.0	Collar						
2.0---36.7	Quartz. Feldspar Porphyry Normal dark grey coloured porphyry. Phenae of blue quartz and Feldspar are prominent. In some places the rock is somewhat bleached and lighter in colour. There is fine disseminated mineralization (mostly pyrite and pyrrhotite) from 32.5 to 36.7'						
36.7---40.7	Altered Qtz/-Feldspar Porphyry: As described in hole no. 1-----similar to the above but more mineralization. Mostly pyrr. but some pyrite and chalice.						
40.7---45.2	Altered Qtz.-Feldspar Porphyry: As before but here there is more chalice and less pyrrhotite. (3 rd fairly mass chalice and pyrr. at 44.6'						
45.2---70.0'	Altered Qtz.-Feldspar Porphyry: As before but less mineralization. There is a horse of unaltered porphyry from 50.6 to 53.9' The contacts are gradational.						
	END OF HOLE 70.0'						

2

3



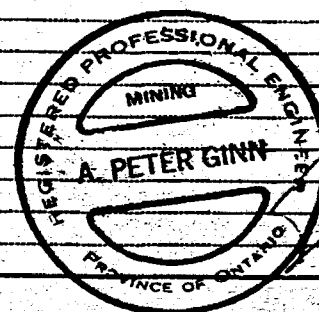
[Handwritten signature]

MARTIN-BIRD GOLD MINES LIMITED

DIAMOND DRILL RECORD

Hole No. Chester Twp #3 Location; 120°W and 128°S Total Depth _____
 Sheet No. _____ Lat. of the # 1 Post _____
 Section _____ Dep. Claim S-63415 Elev. Collar _____
 Date begun August 1957 Bearing N. 20 deg. W. (Mag) Elev. Bottom _____
 Date finished _____ Angle - 50 deg.

DEPTH FEET	FORMATION	SAMPLE No.	WIDTH OF SAMPLE	GOLD \$	SLUDGE GOLD \$
0.0---2.0 ft.	Collar.				
2.0'--52.0	Qtz.-Feldspar Porphyry; Normal unaltered type as previously described. Minor amounts of fine dissemin. mineralization.				
52.0--54.0	Qtz.-Feldspar Porphyry; As above but crushed and foliated at 45 deg. to the core)---Probably tight faulting.--				
54.0--59.0	Altered Qtz.-Feldspar Porphyry; Silicified and sericitized zone with moderate dissemin. pyrrhotite and chalcocite both disseminated and in a few narrow seams at 60-70 deg. to the core.				
59.0--69.0	Altered Qtz.-Feldspar Porphyry; As before --minor dissemin pyrite and chalcoc.				
69.0--75.0	Altered Qtz.-Feldspar Porphyry; As above minor mineralization as above.				
	RND OF HOLE 75.0'				



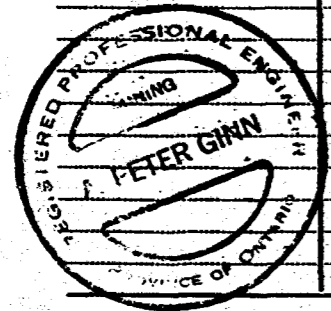
[Handwritten Signature]

MARTIN-BIRD GOLD MINES LIMITED

DIAMOND DRILL RECORD

Hole No. Chester Imp #4 Location -306'W and 140' Total Depth _____
 Section _____ S. of #1 post of claim Elev. Collar _____
 Date begun August 1957 Dip 37° 63' 15" Bearing N. 5 deg. W. (Mag.) Elev. Bottom _____
 Date finished _____ Angle 58 deg.

DEPTH FEET	FORMATION	SAMPLE No.	WIDTH OF SAMPLE	GOLD \$	SLUDGE GOLD \$
0.0-2.0	Collar.				
2.0-7.5	Quartz.-Feldspar porphyry; Normal dark grey coloured porphyry as described previously.				
7.5-14.0	Altered Qtz.-Feldspar porphyry; Silicified, sericitized type as previously described. Minor amount of disseminated exp. chalcocite and pyrite.				
14.0-24.0	Altered Qtz.-Feldspar porphyry; As before but less mineralization.				
24.0-28.0	Altered Qtz.-Feldspar porphyry; As above but less mineralization.				
28.0-43.0	Altered Qtz.-Feldspar porphyry; As above but less mineralization.				
43.0-58.0	Qtz.-Feldspar porphyry; As described at the start of the hole... Dark grey, unaltered type.				
	END OF HOLE 59.0'				



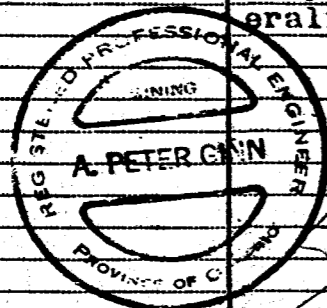
[Handwritten Signature]

MARTIN-BIRD GOLD MINES LIMITED

DIAMOND DRILL RECORD

Hole No. Chester Twp. #4 Sheet No. 5 Location 366' W and 215' S. of
 Section _____ Lat. #1 post claim S-63415. Total Depth _____
 Date begun August 1957 Bearing due North (Ast.) Elev. Collar _____
 Date finished _____ Angle --45 deg. Elev. Bottom _____

DEPTH FEET	FORMATION	SAMPLE No.	WIDTH OF SAMPLE	GOLD		SLUDGE GOLD	
				\$	\$	\$	\$
0.0--2.0'	Collar.						
2.0--45.0'	Altered Qtz.-Feldspar Porphyry; As described previously. Minor mineralization.						
45.0--67/0	Qtz. Feldspar Porphyry; There is a gradual contact through several feet from the silicified-sericitized porphyry at the start of the hole to the relatively unaltered type.						
67.0--72.0	Altered Qtz.- Feldspar Porphyry; As before--moderate mineralization.						
72.0--80.0	Altered Qtz.-Feldspar Porphyry; As before.. minor mineralization.						
80.0--85.0	Diabase. Dark fine grained diabase dike.						
85.0--96.0	Altered Qtz.-Feldspar Porphyry; As previously described but not very well mineralized.						
	END OF HOLE... 96.0'						



[Handwritten signature]