



41P12SW0094 15 CHESTER

010

Diamond Drilling

Township of Chester

Report No: 15

Work performed by: Three Duck Gold Mines Ltd./ Kingbridge Mines Ltd.

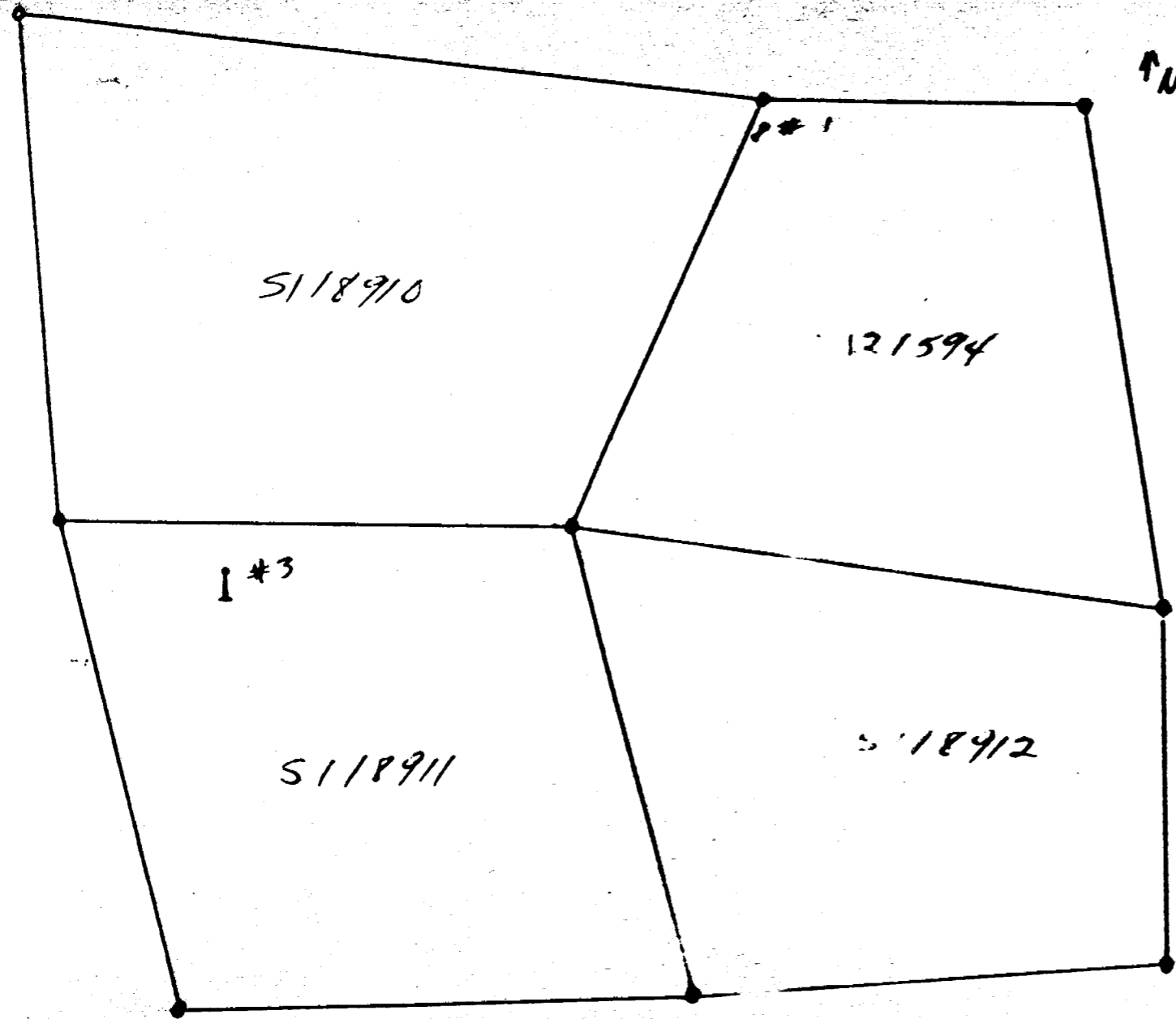
Claim No	Hole No	Footage	Date	Note	
<u>Three Duck</u>					
S 121594	1	41'	Jan/68	(1)	
	1-69	79'	Oct/69	(2)	
S 118911	3	132'	Jan/68	(1)	
<u>Kingbridge</u>					
S 121594	1-70	514'	Dec/70	(3)	
S 118912	2-71	709'	Jan/71	(4)	
		25'			
		1475			

Some

*Advised
by
Kingbridge
Records*

Notes:

- (1) 68-A
- (2) 266/69
- (3) 6/71
- (4) 88/71



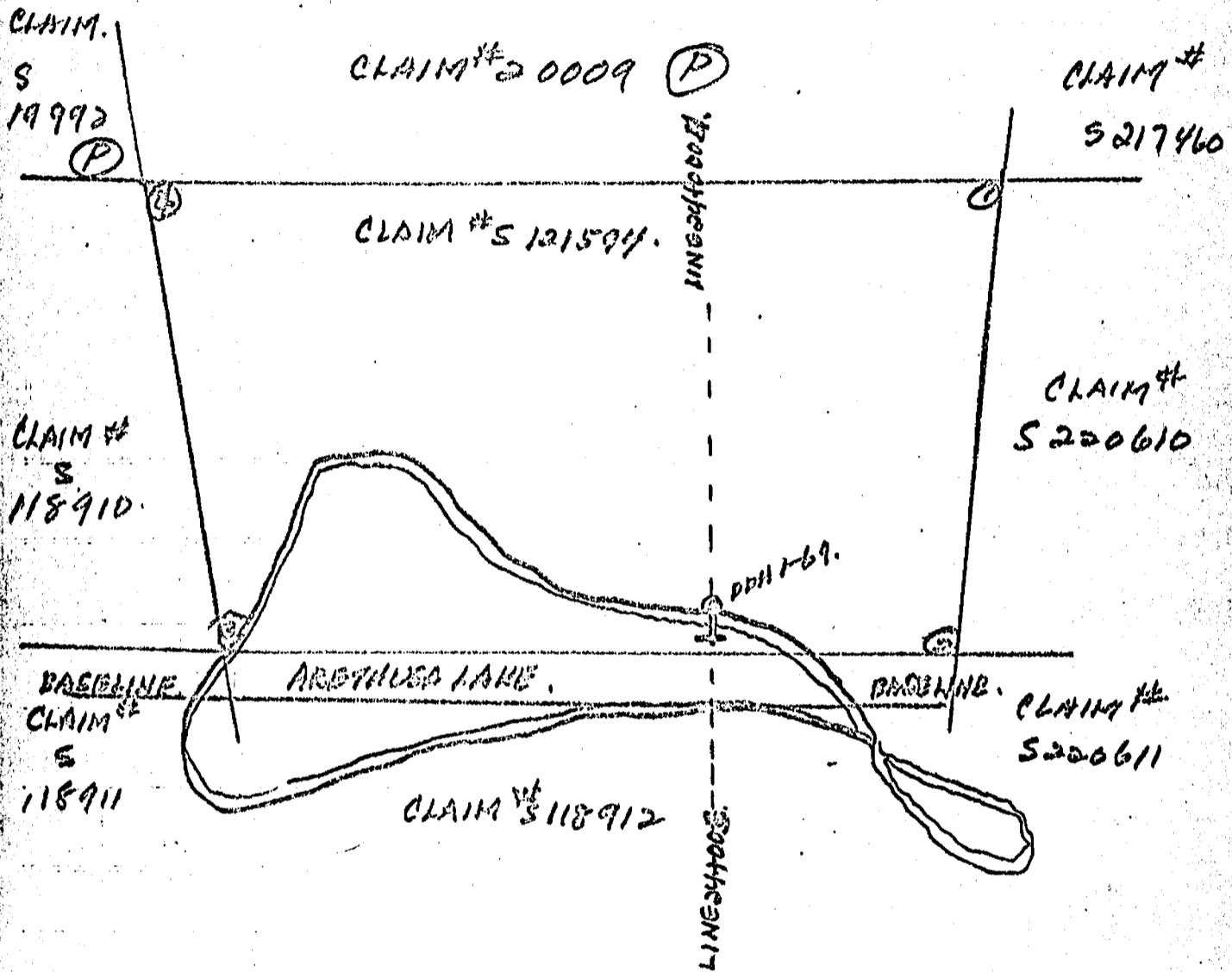
#1 O.D.H. is
south of #4

#3 is 125' east
125' south
#4

Bruce M. Young

THREE DUCK GOLD MINES LTD
 SKETCH FOR DDH. 1-69 LOCATION.
 CHESTER TWP.

SCALE.
 1" = 400 FT.

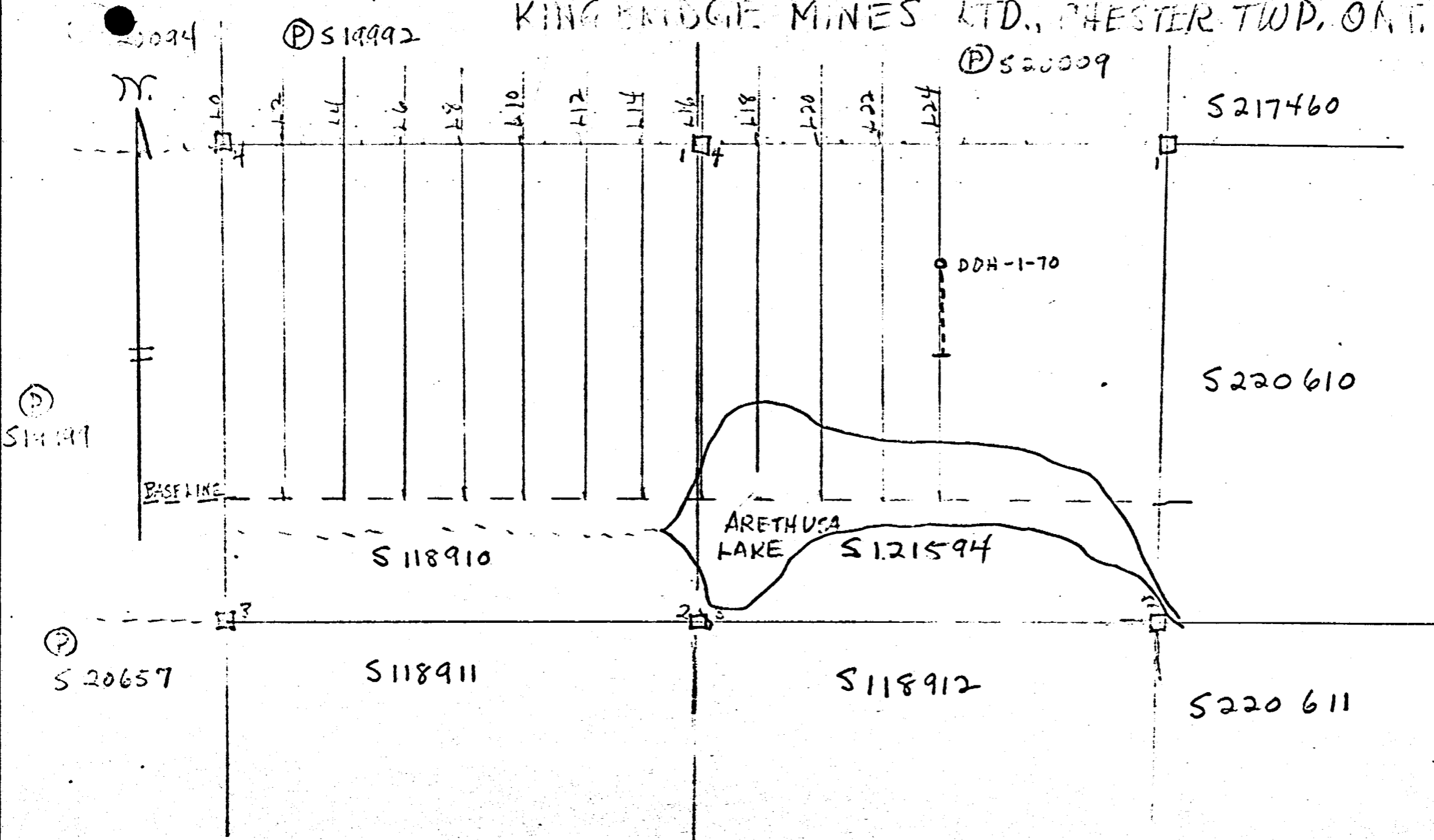


MILMOUNT EXPLORATIONS LTD

W R Rull

266/69 Chester Sup
 Three Duck Gold Mines Ltd

SKETCH. SHOWING LOCATION OF DIAMOND DRILL HOLE DDH-1-70
 KING BRIDGE MINES LTD., CHESTER TWP, ONT.



#6/71 Chester Sy.
 Kingbridge Mines Ltd

REMARKS

LEVEL

DRILL SIZE

COMMENCED

CORE SIZE

COMPLETED

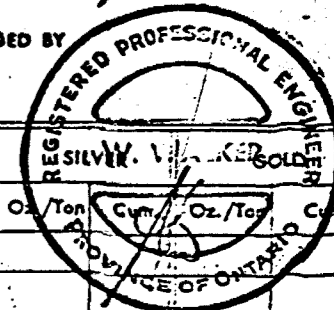
ELEVATION

SHEET NO. 7

AZIMUTH

LOGGED BY

DIP



DIAMOND DRILL RECORD

FOOTAGE		DESCRIPTION	% Sol.	SAMPLE				COPPER		ZINC		LEAD		Oz./Ton	Cum. Oz./Ton	Cm.
FROM	TO			No.	From	To	Length	%	Cum.	%	Cum.	%	Cum.			
64.4	66.0	Medium grained, massive, light grey, acid intrusives White feldspar, pale blue quartz, biotite, sulphides No other rock types A few 1 mm quartz fractures plus tourmaline(?) No cleaving Brecciated. upper contact Veins - see fractures Various accessory sulphides. Some local concentrations may be hypogene.														
66.0	70.2	Medium-fine-grained, massive, gray quartz diorite White feldspar, blue quartz, chloritized feldspar, sulphides No other rock types Abundant fractures various directions, chlorite ± Barren quartz No cleaving No brecciation Veins see under fractures 1 pale pink 1 cm aplite veinlet @ 30° to long core axis All sulphides probably secondary														
70.2	72.5	Fine to medium fine grained, massive, dark grey, quartzitic basaltic(?) Translucent feldspar, pale blue quartz, chloritized feldspar, sulphides No other rock types Footage represents fracture zone Lightly sheared 130° to long core axis														

Continued

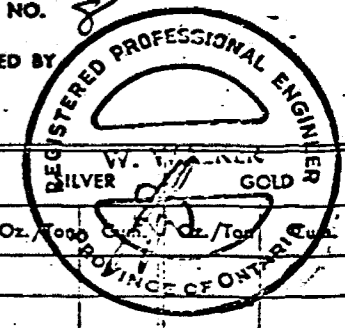
MINE
REMARKS
LEVEL
LOCATION

KINGBRIDGE MINES LTD.

DRILL SIZE
CORE SIZE
COMMENCED
COMPLETED

FOOTAGE	DIP	AZIMUTH	FOOTAGE	DIP	AZIMUTH

DEPARTURE
ELEVATION
AZIMUTH
DIP
LENGTH
SHEET NO.
LOGGED BY



DIAMOND DRILL RECORD

FOOTAGE		DESCRIPTION	% Sul.	SAMPLE				COPPER		ZINC		LEAD		Oz./Ton
FROM	TO			No.	From	To	Length	%	Cum.	%	Cum.	%	Cum.	
Continued														
70.2	72.5	No brecciation Veins - quartz sulphide chlorite veins 1 mm to 1 cm various directions Various sulphides heavily disseminated throughout, with concentrations in veins and shaly planes.												
72.5	73.5	Fine grained, massive, light gray + gray acid intrusive and partly crystallized fragments Translucent feldspar, white & very pale blue quartz, chloritized feldspar, very little sulphides in the light zones, abundant sulphides in darker zones. Direct chlorite, actinolite(?) sulphide 1 to 5 mm fractures in various directions no cleavage no brecciation Veins in fractures and irregular 1 to 2 mm acetic sulphide Disseminated barren sulphide in darker zones, probably including pyrite arsenopyrite and chalcopyrite												
73.5	77.3	Fine grained, massive, dark gray, andisite(?) Translucent feldspar, pale blue quartz, chloritized feldspar, very little arsenopyrite sulphide No other rock types												

continued

MINE

KINGBRIDGE MINES LTD.

REMARKS

LEVEL

DRILL SIZE

COMMENCED

LOCATION

CORE SIZE

COMPLETED

FOOTAGE	DIP	AZIMUTH	FOOTAGE	DIP	AZIMUTH

DEPARTURE

LENGTH

FEET

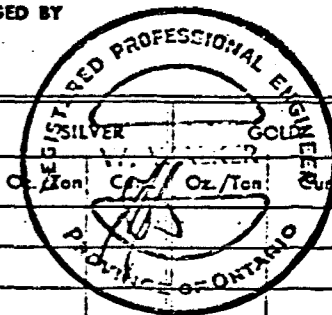
ELEVATION

SHEET NO. 9

AZIMUTH

LOGGED BY

DIP



DIAMOND DRILL RECORD

FOOTAGE		DESCRIPTION	% Sol.	SAMPLE				COPPER		ZINC		LEAD	
FROM	TO			No.	From	To	Length	%	Cum.	%	Cum.	%	Cum.
Continued													
73.5	77.3	Fractures include a few chlorite slips in various directions. Local tendency to shear. No brecciation. Abundant highly irregular 1-2mm quartz veins & sulphides. Much hypogene sulphide mineralization in and near quartz veins and shears.											
77.3	88	Fine-grained massive grey acid intrusive. White & translucent feldspar very pale blue quartz, minor chloritic scales, sulphides. No other rock types. Quartz sulphide chlorite fractures in various directions. Shearing associated with veining. Brecciation associated with veining. 78.8 to 79.8 fault with quartz and various sulphides. 79.8-88 many highly irregular 1 to 3mm quartz veins. Hypogene sulphides restricted to fault zone.											
88	95.4	Fine-grained evenly foliated light grey, sheared acid intrusive. White feldspar, clear quartz, chlorite, sulphides. Foliation @ 40° to long creases.											

Continued

MINE **KING BRIDGE MINES LTD.**

REMARKS

LEVEL
ATION

DRILL SIZE

CORE SIZE

COMMENCED

COMPLETED

FOOTAGE

DEPARTURE

ELEVATION

AZIMUTH

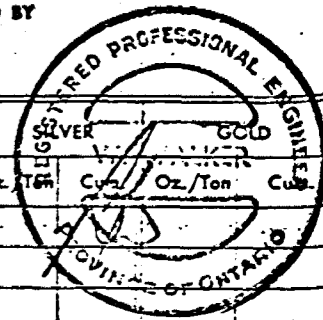
DIP

LENGTH

SHEET NO. **12**

LOGGED BY

FEET



DIAMOND DRILL RECORD

FOOTAGE		DESCRIPTION	% Sol.	SAMPLE				COPPER		ZINC		LEAD		Oz. Au. / Ton Cu.
FROM	TO			No.	From	To	Length	%	Cum.	%	Cum.	%	Cum.	
151	157	Medium fine grained, massive, grey acid intrusive white feldspar pale blue quartz albite chloritized biotite in the less altered sections minor fractures with quartz albite and sulphides in various directions slightly altered throughout @ 55° to long core axis no brecciation Veins - see under fractures Mineralization - minor disseminated sulphides largely associated with the altered plagioclase (maybe reprecipitated) Hypogene sulphides in veins												
157	200	Medium grained, massive grey, white and translucent feldspar pale blue quartz, biotite very little sulphides Red. slats of relic andesite. Major fractures in various directions 17 cm. altered andesite @ 197-2 @ 70° to long core axis and some @ 199-200. no brecciation Veins - 1 mm to 1 cm quartz with an average of 1 cm fine grained granitic wall rocks with disseminated sulphides												

Continued

MINE

KING BRIDGE

REMARKS

LEVEL

DRILL SIZE

COMMENCED

CORE SIZE

COMPLETED

DEPARTURE

LENGTH

FEET

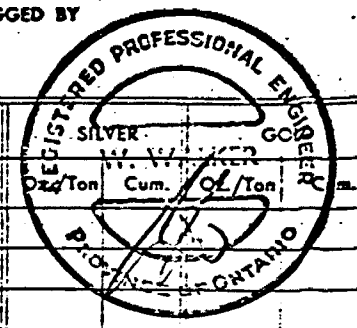
ELEVATION

SHEET NO. 15

AZIMUTH

LOGGED BY

DIP

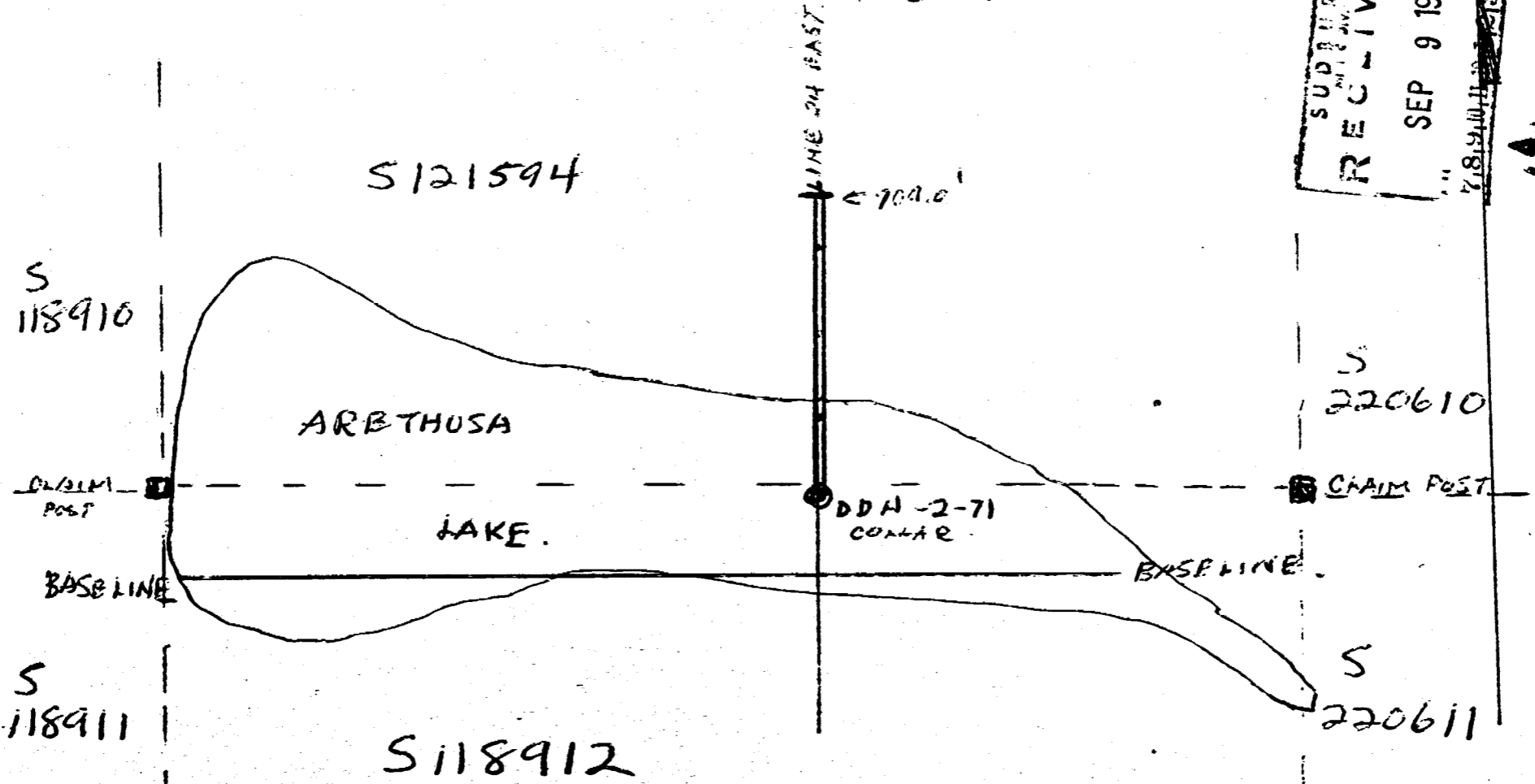


DIAMOND DRILL RECORD

FOOTAGE		DESCRIPTION	% Sol.	SAMPLE				COPPER		ZINC		LEAD	
FROM	TO			No.	From	To	Length	%	Cum.	%	Cum.	%	Cum.
Continued													
246	255	tend to follow the shear moderately sheared throughout @ 40° to the log core axis No brecciation Veins - quartz, chlorite sulphide fracture fillings Minor disseminated sulphides structurally controlled											
255	270.6	Medium grained, massive, gray, acid intrusives White feldspar, pale blue quartz, chloritized biotite as visible accessory sulphides No other rock types Fm. brecciated various directions with chlorite quartz sulphides and mica not visible with acid, including sulphide no shearing no brecciation Veins are under fractures Minor hypogene sulphides associated with the chlorite.											
270.6	290	Medium fine grained, massive, gray sheared acid intrusives Blue quartz, white feldspar, chloritized biotite no other rock type											

continued

LOCATION OF DRILL HOLE SKETCH
 FOR KING BRIDGE MINES LTD.
 CHESTER TWP. ONT



SUPPLY RECEIVED
 SEP 9 1971
 71851011 71851486

SCALE 1/2" = 200 FT.

W.R. Dick Aug 30th 71

DIAMOND DRILL RECORD

NAME OF PROPERTY KING BRIDGE MINES LTD.
 HOLE NO. 2-71 LENGTH 709' CHESTER TWP.
 LOCATION CORE SIZE AYT.
 LATITUDE 200' NORTH DEPARTURE L 24 EAST
 ELEVATION ARETHUSA LAKE AZIMUTH NORTH (AST) DIP 60°
 STARTED JAN. 4TH 1971 FINISHED JAN 20TH 1971

FOOTAGE	DIP	AZIMUTH	FOOTAGE	DIP	AZIMUTH

HOLE NO. 2-71 SHEET NO. 1

REMARKS
Aug 30th 1971
 LOGGED BY W.R. Miller

FOOTAGE		DESCRIPTION	SAMPLE			ASSAYS			
FROM	TO		NO.	% SULPHIDES	FOOTAGE FROM TO TOTAL	%	%	OZ/TON	OZ/TON
0	41.0'	CASING							
		@ 37' - 41' CAVE, GRANODIORITE INTRUSIVE.							
41.0'	118.2'	GRANODIORITE - INTRUSIVE YOUNGER GRANITE MEDIUM GRAINED, MEDIUM MOTTLED GREYISH COLOR WITH NUMEROUS FLECKS OF CHALCOPRITE OR ALTERED HORNEBLAND. SCATTERED BARREN QUARTZ VEINLETS AT VARIOUS ANGLES TO CORE FEW SMALL SCATTERED DARK COLORED INCLUSIONS OF BASIC ROCK; PARTLY ASSIMILATED. GENERALLY HARD MASSIVE BRITTLE ROCK. SCATTERED SULPHIDES. @ 68.0' 1/8" dark GRAY QUARTZ @ 25°. LOWER WALL FREE STRIATED SLIP. FINE SPECKS PYRITE. WALL ROCK REDDENED 1" @ 80.0' IRREGULAR CHLORITIC SLIP @ 20° WALL ROCK REDDENED.							
118.2'	120.0'	LAMPROPHYRE							
		SHEARED IRREGULARLY @ 25°. FINE QUARTZ CARBONATE FILLINGS ALONG SHEAR PLANES CONSIDERABLE FINE PYRITE CHALCO-PYRRHOTITE							

SUBSURY RECEIVED
 SEP 9 1971
 7:59 AM 10:11 12:12 1:23 4:56 PM

EM. 6-1168

LANGRIDGE LIMITED.

DIAMOND DRILL RECORD

NAME OF PROPERTY KINGBRIDGE MINES LTD
 HOLE NO. 2-71 LENGTH 704' CHESTER TWP
 LOCATION CORE SIZE - AXT.
 LATITUDE 24° NORTH DEPARTURE L24 EAST
 ELEVATION ARETHUSA LAKE AZIMUTH NORTH (AST) DIP 60°
 STARTED JAN 4th / 71 FINISHED JAN 20th / 71

FOOTAGE	DIP	AZIMUTH	FOOTAGE	DIP	AZIMUTH

HOLE NO. 2-71 SHEET NO. 2

REMARKS _____

Aug. 30th / 1971

LOGGED BY W. R. Duda

EM. 6-1168

LANGRIDGE LIMITED.

FOOTAGE		DESCRIPTION	SAMPLE				ASSAYS				
FROM	TO		NO.	% SULPHIDES	FOOTAGE			%	%	OZ/TON	OZ/TON
					FROM	TO	TOTAL				
120.0	246.5	GRANODIORITE: - AS ABOVE.									
		@151.5' MINOR GOLD BEARING TYPE, SILICIFIED SHEAR ABOUT 1" IN WIDTH @ 30°. SMALL BLOB PYRITE, CHALCOPYRITE, & PYRRHOTITE.									
		@163' - 257' - IRREGULARLY CHLORITIZED AND CUT BY CHLORITIC SEAMS. LOCALLY BLEACHED & SILICIFIED									
		@173-174' UP TO 1/2" IRREGULAR VUGGY QUARTZ - FELDSPAR CHLORITE VEIN, AT LOW ANGLE TO CORE, CONSIDERABLE PYRITE AND CHALCOPYRITE.									
		@216.1' SMALL IRREGULAR PATCH QUARTZ SPOTS OF PYRITE & CHALCOPYRITE									
		@220.1' 1" LAMPROPHYRE @ 40° WALL ROCK BLEACHED									
		@226.2' - 1/16" CHLORITIC SEAM @ 25°. SOME SILICA, CHALCOPYRITE & PYRITE.									
		@255.5' UP TO 1/8" SEAM EPIDOTE - CHALCOPYRITE - PYRRHOTITE @ 70° SOME SILICIFICATION OF WALL ROCK									

SUBSURY RECEIVED
 SEP 9 1971
 7:18 AM
 1,2,3,4,5

DIAMOND DRILL RECORD

NAME OF PROPERTY KINGBRIDGE MINES LTD
 HOLE NO. 2-71 LENGTH 709' CHESTER 100'
 LOCATION CORE SIDE - AYT.
 LATITUDE 20° NORTH DEPARTURE L34 EAST
 ELEVATION APETAUERIDE AZIMUTH NORTH (AST) DIP 60°
 STARTED JAN 4th /71 FINISHED JAN 20th /71

FOOTAGE	DIP	AZIMUTH	FOOTAGE	DIP	AZIMUTH

HOLE NO. 2-71 SHEET NO. 3
 REMARKS
Aug 30th /1971
 LOGGED BY [Signature]

FOOTAGE FROM	TO	DESCRIPTION	SAMPLE			ASSAYS						
			NO.	% SULPH IDES	FOOTAGE FROM	TO	TOTAL	%	%	OZ/TON	OZ/TON	
120.0'	296.5'	CONT'D.										
296.5'	305.0'	@ 291.5' SEAM @ 15-20° CONSIDERABLE PYRITE CHALCOPYRITE & PYRRHOTITE.										
305.0'	409.0'	DIABASE DYKE; - MATAHEWAN? CHILLED EDGES @ HIGH ANGLES TO CORE. FINE GRAINED DIABASE TEXTURE; A NUMBER OF IRREGULAR CALCITE VEINLETS.										
409.0'	421.0'	GRANODIORITE I - AS ABOVE.										
421.0'	539.0'	LAMPROPHYRE; - SIMILAR TO 118.2'-120.0'										
539.0'	643.0'	GRANODIORITE; - AS ABOVE WITH THE EXCEPTION THAT FRACTURES ARE MORE NUMEROUS AND CONTAIN MORE CHALCOPYRITE, PYRITE, & PYRRHOTITE AS WELL AS SOME DISSEMINATION OF MINERALS										
643.0'	679.0'	QUARTZ DIORITE I - NUMBEROUS INJECTIONS OF GRANODIORITE UP TO 6" IN WIDTH.										
679.0'	686.0'	GRANODIORITE - INTRUSIVE DYKE.										
686.0'	709.0'	QUARTZ DIORITE; - GRANODIORITE INJECTIONS UP TO 3" 709.0' - END OF HOLE.										

EM. 6-1168

LANGRIDGE LIMITED,