



41P12SW0098 19 CHESTER

010

Diamond Drilling

Township of CHESTER

Report NO 19

Work performed by: Wm. R. Miller

Claim NO	Hole NO	Footage	Date	Note
S 153151	1-71	150.0'	Sept. 71	

Notes:

DIAMOND DRILL RECORD

NAME OF PROPERTY W. R. MILLER
 HOLE NO. 1-71 LENGTH 150 FEET
 LOCATION CLAIM 5153151 CHESTER TWP. ONT.
 LATITUDE 53°5' S OF #1 POST DEPARTURE 15' W OF CLAIM LINE.
 ELEVATION _____ AZIMUTH NORTH DIP 55°
 STARTED SEPT. 26/71 FINISHED SEPT. 29/71

FOOTAGE	DIP	AZIMUTH	FOOTAGE	DIP	AZIMUTH

HOLE NO. 1-71 SHEET NO. 1

REMARKS _____

LOGGED BY W. R. Miller
Sept 30th 1971

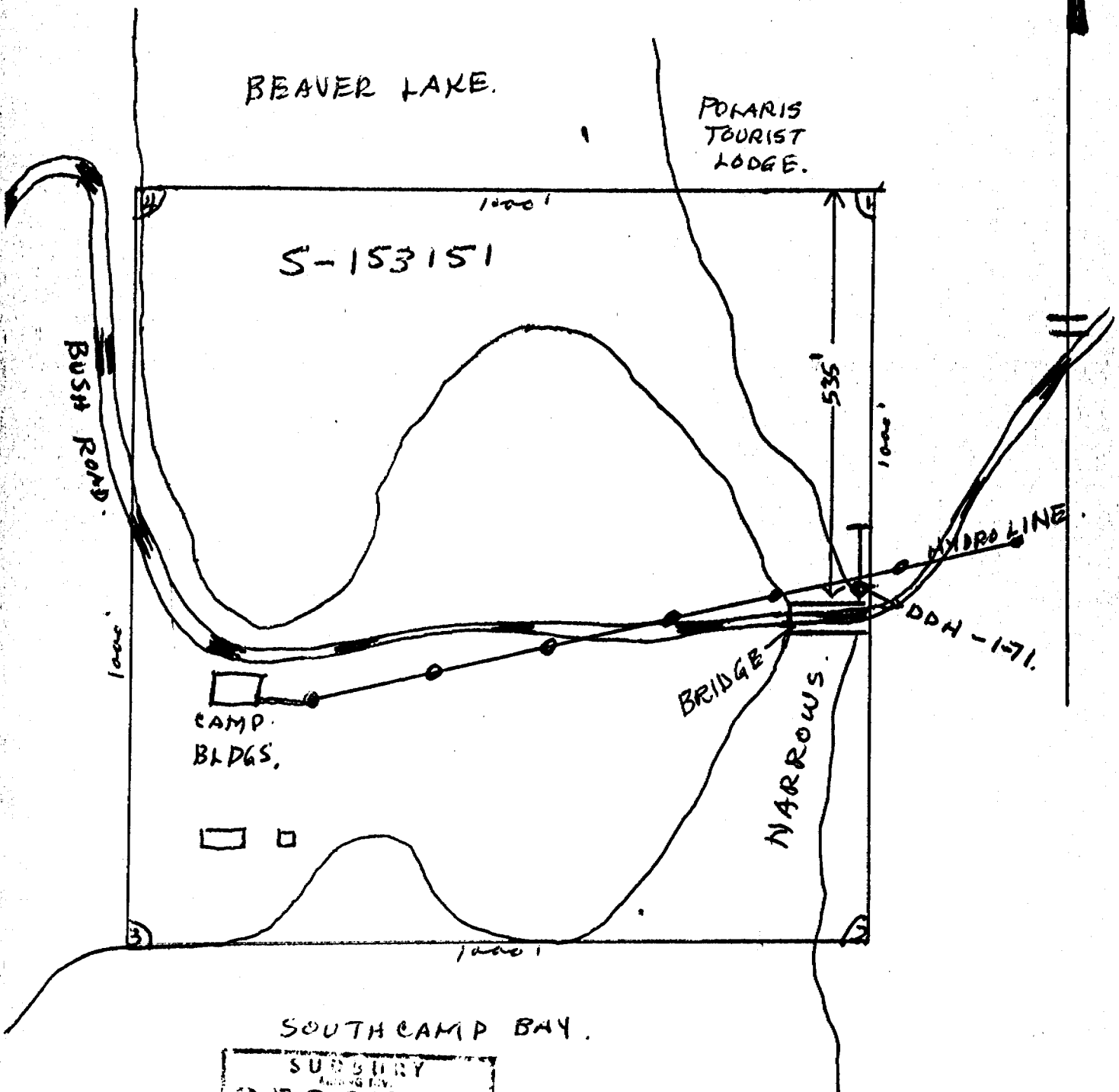
FOOTAGE		DESCRIPTION	SAMPLE			ASSAYS					
FROM	TO		NO.	% SULPHIDES	FOOTAGE		%	%	OZ/TON	OZ/TON	
					FROM	TO	TOTAL				
0	2.6	CASING.									
2.6	150.0	Medium to large grained granodiorite. Color medium grey with light pink feldspar. Large blue quartz eyes. Some brecciation between 70' and 146'. Fractures are numerous and in various directions. Fine grained shearing @ 70' for 1", 72' for 6", 75 ft for 2 ft., 79' for 2' and 97' for 8'.									
	END.	1/2" quartz vein @ 70' Many flakes noted in slips @ 105.5'. Pyrite noted from 104' to 106'. 1" quartz vein @ 72' 2" quartz vein @ 75' 2" " " @ 78' 3" " " @ 105.6' Pyrite and cubes noted from 135.6' to 136.6' 1 ft " " @ 122' 1" " " @ 128' Very minor sulphides in slips throughout the core. 3" " " @ 143' 1 ft " " @ 145.6'									
		Main point of interest is the larger than usual blue quartz eyes and other rock crystals when compared to other drilling in the township. END.									

EM. 6-1168

LANGRIDGE LIMITED.

SUBSURFACE RECEIVED
 OCT 4 1971
 7:39 AM 12:12 PM 456

DIAMOND DRILL HOLE - 1-71
 SKETCH PLAN FOR CLAIM-S 153151
 CHESTER TWP. ONT.



SUBSURY
 RECEIVED
 OCT 4 1971
 7 8 9 10 11 12 1 2 3 4 5 6

SCALE - 1" = 200 FT.

W. R. Miller
 Sept 30th / 1971