



41P12SW0099 14 CHESTER

010

*shown by Memphis Records*

Diamond Drilling

Township of Chester

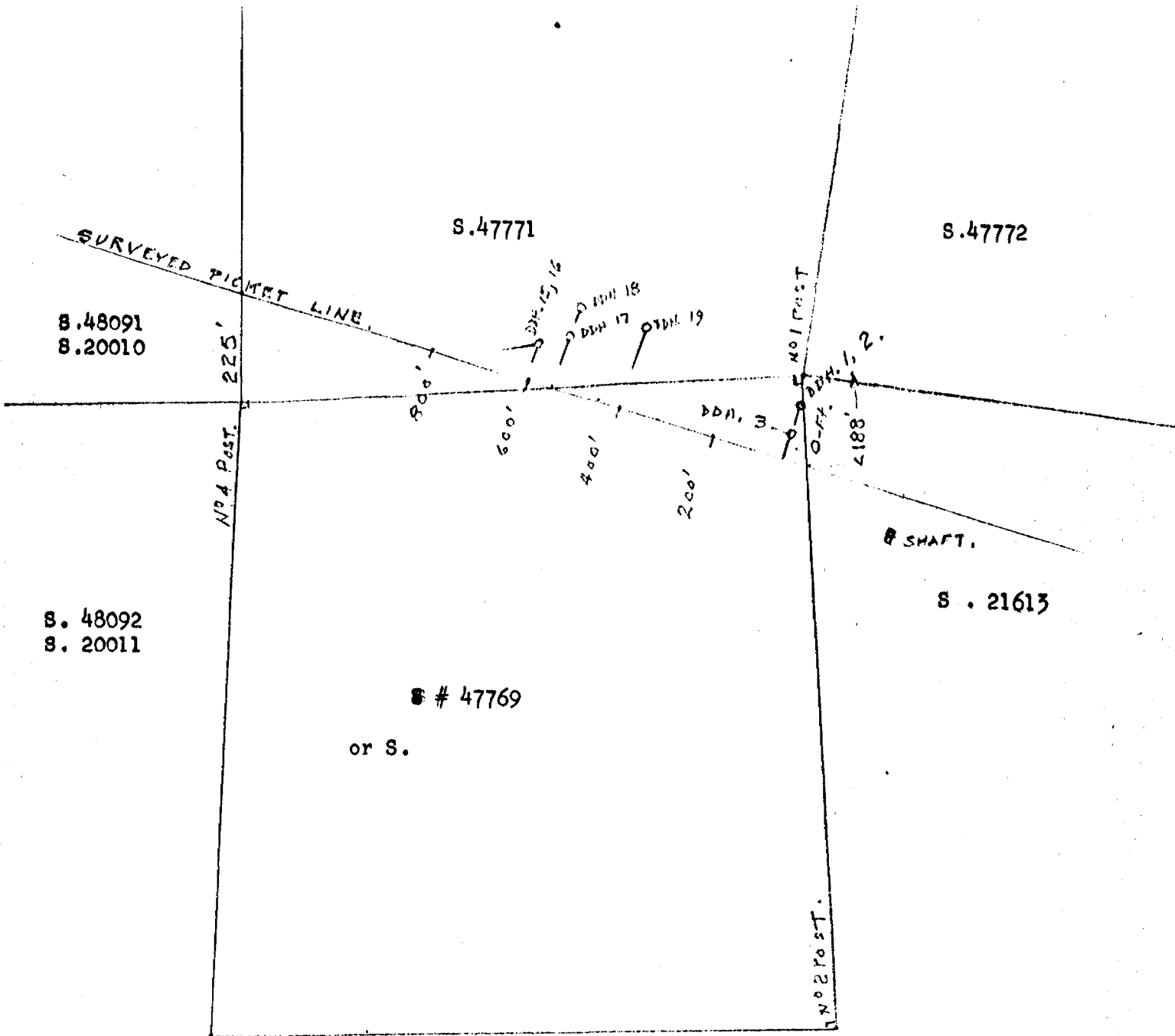
Report NO: 14

Work performed by: Chesgo Mines Ltd.

Claim NO	Hole NO	Footage	Date	Note
S 47769	1	251'		
	2	30'		
	3	107'		
S 48091	4	271'		
	5	336'		
	6	226'		
	7	208'		
	8	280'		
	9	302'		
	10	221'		
	11	402'		
S 47771	17	253'		
	18	402'		
	19	340.5'		
	<u>14</u>	<u>3629.5</u>		

Notes:

All work done 1948-1950



CHESGO MINES LIMITED

SURFACE PLAN OF DIAMOND DRILLING TO BE USED AS  
 assessment work according to a accompanying Drill logs  
 and declarations.

*A.H. Ross*

HOLE No. 1.

Latitude 23.5  
 Departure 96  
 Elevation  
 -2666

Bearing 205° Magnetic  
 Dip Angle 50°  
 Total depth 251'

Footage	Rock	Remarks	Sample Length	No.
0 - 6	Casing	Some boulders		
	Diabase	Quartz -diabase with variations and blue Phenocrysts showing alteration or pyro metamorphism-- seams carbonate & qtz. Schistose at 21' with some pyrite.	10.2' 2" 16' 10" 17' 10" 21 4	501 502 503 504
24	Diorite	Qtz. with lean pyrite		
29	Granodiorite	Sowing some brecciation and incl. of jasper.		
67	Andesite	Schist mlzd at	69.5	
70			72	
83	Alternating	Qtz diorite- granodiorite - diabase		
105	Andesite	Schist -- P.Lava		
	Basalt	Dark, compact		
	Granodiorite	With red jasper inclusions - 9'		
	Basalt	digestive phase - 2'		
	Granodiorite	11		
	Basalt			
		Varying complex		
150	Andesite	Schist with siliceous bands typical of pillow lava.		
163	Diabase	Compact dike rock		
190	Andesite	with some basalt bands. Compact to schisted - old p.l.		
251	<u>END OF HOLE.</u>			

At 157 to 163 has the appearance  
 of vein material but not much mlzn.  
 and not in line with any outcropping.

HOLE No. 2

Latitude 23.5  
Departure 96  
Elevation

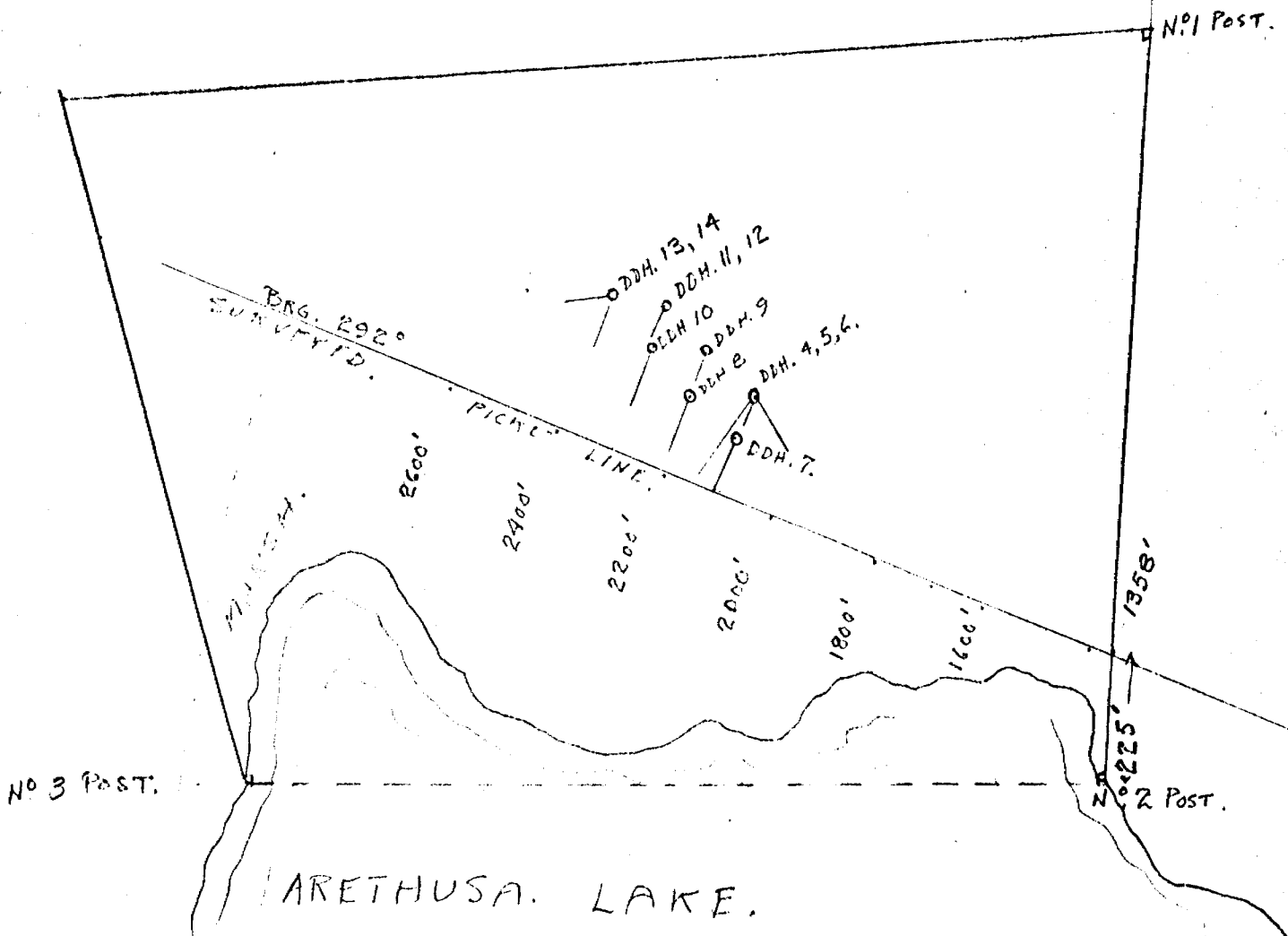
Bearing 205°  
Dip angle 72°  
Depth 30'

Footage	Rock	Remarks	Sample at	length
0 - 7	Casing			
	Diabase			
18	Grano-diorite			
21	Andesite	Schisted zone of pillow lava. some mld seams		
27	Quart Diorite			
30	HOLE STOPPED	CASING LEFT FOR CONTINUATIO	LATER.	

CHESGO MINES LIMITED

*Chester Stanger*

PLAN OF DRILLING ON CLAIM S.48091 - surveyed as S.20010  
for assesment work on Claims S. 48091 to 99 inclusive.  
as described by accompanying drill logs.



*Ch. Stanger*

HOLE No. 3.		Latitude 23	Bearing 200°		
		Departure 43'	Dip angle 45°		
		Elevation	Depth 107'		
Footage	Rock	Remarks	Sample from	Length	No.
0- 9	casing				
3	Basalt	altered with blue quartz pheno's with dikes of grano-diorite showing digestion influences or brecciation			
34	Vein matter		34'	11"	510
36	Andesite	Schist mostly pillow lava			
	Basalt				
82	Granodiorite				
85	Andesite	Schist	95'	2"	519
107	<u>End of Hole.</u>				

No variation in Schist but some reason for believing that granodiorite or porphyry with accompanying mineralization might be encountered on south side of this zone.

The older greenstones appear much more extensive in this locality than they have been found farther west.

Vein intersections not as good as those outcropping on surface 60 feet distant.

HOLE No. 4

Latitude 2100  
Departure 173  
Elevation 37.9

Bearing 215°  
Dip angle 43°  
Total depth 271'

CHESGO MINES LIMITED

Diamond Drill Hole Log Report

<u>Footage</u>	<u>Rock</u>	<u>Remarks</u>	<u>Length</u>	<u>Sample</u>
0 - 5		Casing		
	Diabase-Basalt	Alternate Dikes		
30	Basalt			
32	Diabase	Contact		
42	Lamp.	Contact Oblique		
48	Amyg. Basalt	Contact Oblique		
53.6	Diabase			
58	Amyg. Basalt			
70	Lamp			
73.5	Basalt	Contacts 400		
85	Diabase	At 94.2, 2" lamp.		
114	Amyg. Basalt			
119	Basalt			
130-146	Amyg. Basalt	Contacts 500		
150	Amyg. Basalt	Mineralized vein	2"	511

HOLE No. 4  
Chesgo Mines Limited

Latitude 2100  
Departure 173  
Elevation 57.9

Bearing 215°  
Dip angle 45°  
Total depth 271'

Log. Hole No. 4:

<u>Footage</u>	<u>Rock</u>	<u>Remarks</u>	<u>Length</u>	<u>Sample</u>
156	Silic. Schist			
161.5		Vein matter	13	512
	Schist to Amyg.		10	513
165.5	Diabase			
183	Basalt - Diabase			
190	Coarse Diabase			
192	Diabase	variable		
200	Pink Porphyry (Quartz)			
201	Diabase	variable		
220	Granite Porph. Pink			
225.5	Diabase - Basalt			
232	Amyg.			
243	Schist, Greens.			
246	Basalt, Amyg.	Variable		
261		3 ft. down contact of Porphyry dike.		



HOLE No. 4

Latitude 2100  
Departure 173  
Elevation 57.9

Bearing 215°  
Dip angle 45°  
Total depth 271'

Chesgo Mines Limited

Log. Hole No. 4:

<u>Footage</u>	<u>Rock</u>	<u>Remarks</u>	<u>Length</u>	<u>Sample</u>
261		© 267 mnlzd. Porph. (Chalco)	10"	518
	Mostly Basalt			
271		End of Hole		

CHESGO MINES LIMITED

Log. Hole No. 5:

<u>Footage</u>	<u>Rock</u>	<u>Remarks</u>	<u>Length</u>	<u>Sample</u>
100	Diabase			
124	Diorite			
127	Lamp.	Mineralized Some		
131	Aplite			
132	Lamp.			
143	Basalt, Amyg.			
158	Aplite			
159.5	Lamp.			
160	Fine diorite			
162	Aplite			
164.5	Diorite			
166	Aplite			
170	Porphyry & Basalt to Schist	Successive dikes, 12" to 16" & basalt well-mnlzd. sections 15" to 24"		
182				
191	Amyg.	Basaltic Lava		
195	Basalt	Variable, sil. seams		

CHESGO MINES LIMITED

Log., Hole No. 5:

<u>Footage</u>	<u>Rock</u>	<u>Remarks</u>	<u>Length</u>	<u>Sample</u>
195	Basalt	Variable, with sil. seams & small dikes diabase 204, 206, 212 --- 215 diabase @215.5 aplite, varying crystals, basalt		
219	Diorite			
227	Diorite			
230	Amyg. Basalt			
232	Diorite (qtz.)	varying		
236	Basalt	Amyg.		
237	Diorite	15" basalt		
252	Diorite, Basalt	varying		
258.5	Diorite	Contact		
261	Basalt	@ 262' mnlzd. Black and amyg. 3" lamp.	12"	547
269	Diorite	Porphyry in places		
271	Basalt			
272	Diorite	with porh. spots		
274	Basalt	Amyg.		

Chesgo Mines Limited

Log, Hole No. 5:

<u>Footage</u>	<u>Re k</u>	<u>Remarks</u>	<u>Length</u>	<u>Sm ple</u>
280	Lamp	8" mlzd. 8" " schist	8" 3"	548 549
232	Basalt - Schist	Silicious		
287	Diorite-Porphry	290	12"	550
293	Schisted Basaltic	291 Amyg.	12"	551
304	Diorite Porphry			
309		Two Feet Lost		
311	Grano-diorite	Blue-eyed Porphyry & mica		
323	Grano-diorite			
336	End of Hole			

HOLE No.6

Latitude 2093  
 Departure 170  
 Elevation 37.9

Bearing 172°  
 Dip Angle 54°  
 Total depth. 226'

Footage	Kind of Rock	Remarks	Length	Sample No.
0 - 5'	Casing			
16	Basalt			
97	Qtz Diorite	Medium Grn. sections at intervals of coarser		
118	Andesite	12" diabase dike		
120	Vein	1/8" quartz seam		
118		1/4" quartz seam		
125	Andesite	Xenol slip plane same as core		
147	Schist	A abrupt contact with carbonate seams Cherty sheared zone with some mlzn.		
170				
172		Lean Pyrite Pyrotite	36"	815
175		Similar to forgoing	30"	816
180		" "	12"	817
182		Contact - obscure		
212	Qtz Diorite	Medium Grn, with considerable interstitial pyrite		
214	Lamprophyre			
	Diorite	Med.Gr. mlzd disseminated pyrotite & interstitial pyrite - increasingly coarse grn out by thin quartz veinlets		
226	<u>BOTTOM</u>			

Forgoing hole drilled at an angle of 45° to strike of vein to explore vicinity of lamprophyre dike on surface

One short section of core thought to have visible gold showing but so minute as to be uncertain.

HOLE No.7

Attitude 2100      Bearing 212°  
 Departure 105      Dip Angle 45°  
 Elevation 36.7      Total depth 203

Footage	Kind of Rock	Remarks	length	Sample NO.
0 - 9	Casing			
27	Basalt	With 3' of diabase about the middle and 6" gran.porph at 23'		
32	Quartz Diorite			
36	Schist	Andesite pillow lava.		
39	Diabase	followed by narrow band of schist		
41	Lamprophyre	Dike		
60	Granite	This is an area of heavy jointing probably an end of brecciation at lower level.		
63	diabase			
65	Granite			
69	Diabase			
71	Granite			
	Schist	Probably Tuff of basic character almost greywacke. Green, siliceous to crumpled yellow-grey, with seams of pyrite and carbonates throughout.		
97	Porphyry	Blue-grey with qtz phenocrists from 115 some interesting mizn in spots but has no pyrrhotite. Becomes schistified		
153	Porph. Schist	at 154 Heavier mizn.	16"	690
162	}	Mizd seams. With interstitial quartz and some chalcopyrite, but no disseminated pyrite.		
185				
170				
174				
203	<u>BOTTOM</u>			

This hole probably stopped short of the No.4 vein but can be continued later on if found advisable.

HOLE No. 8

Latitude 2190  
Departure 130  
Elevation 32'Bearing 212° 30'  
Dip Angle 45°  
Total depth 280'

Footage	Kind of Rock	Remarks	Sample length	No.
0 - 10	Casing	Some boulders - casing left.		
18.5	Diabase	Qtz. compact dike	10"	601
25		Carbonated matrix		
35	Diorite	Blue Qtz phenocrists - variable		
	Lamprophyre	6" dike of aplite at 25° with core		
39		Dike		
51	Schist	Basic at 46' mlzd	8"	616
52.5	Felsite	(Chilled porph) dike at 25° with core	9"	665
		at 52' mlzd schist	30	664
		(contact)	15	663
60	Basalt	Schist variable 70° with core at 50'	97	662
65	Schist	Andesite -	95	661
			92.5	660
75	Aplite	quartz-oligoclase-sparse hornblende.	85.5	659
		some pyrite seams	88.5	658
89	Lamprophyre	dike in green schists	87	657
92.5	Aplite	Very fine gr. almost felsitic.		
		at 100' & 105	36"	649
111	Schist	Grey-green - probably olivine basalt (old)	36	650
114		some fine pyrite 30° with core.	32"	651
121		116	4.5"	652
		137	15	653
141	Diabase	at 127' Granodiorite blue phenos.	17"	648
146	Granodiorite	Brecciated, schistified with pyrite	18	646
		to meta diorite at 144.5	20	645
152	Schist	siliceous green andesite	147	644
			148	643
158	Diorite Porph.	Meta diorite well mlzd and with	150	642
		Blue Qtz phenos.		
		152	15	641
	Qtz Porphyry	transitional from above. at 155	9	640
		this section much sheared and fractured	157	639
		with variable phases of brecciation	158	638
		and alteration ranging to meta diorite	160	637
		strong to medium mlzn	168	635
			164.5	636
170.5	Vein	some vein matter	170	634
		Vein well mlzd.	173	632
		very siliceous and brecciated	175	633
			176	629
192	Porphyry	shearing commences - mlzn leaner	180	630
207	"	Diorite dike	181.5	631
			188	627
			190	628
			198	626
280	<u>BOTTOM OF HOLE</u>		202	625
			210	622
			230	621

HOLE # 9.

Latitude 2200  
 Departure 129.5 North  
 Elevation 31.8

Bearing 208  
 Dip angle 55°  
 Total depth 302'

Stage	Rock	Remarks	Length	Sample	No.
0 - 5	Casing Diabase	No boulders Casing pulled.			
47'	Qtz Diabase	Differentiate of above due to heat alteration			
58	Diabase				
91		Misd section		18"	601
		Becomes brecciated and altered	92.5'	15"	602
		-- meta basalt -- with evidences of	112	6	603
166		pyro-metamorphism.	123'	6	604
	Schist	Becomes brecciated at 169	134	17	605
		to 177' where shétted again.	166	18	606
		with some siliceous seams and interstit ial			
210	Diabase	pyrite at close intervals.	182	6	607
		Compact	190	30"	608
217		all	208	24	609
	Lamprophyre	of	210	28"	610
220		this			
	schist	section			
222		quite			
	Lamprophyre	coarsely			
230		brecciated.			
	Basalt				
270					
	Norite	(brown lamellar crystals believed to be			
		enstatite) very dark basic rock			
276					
	Basalt				
302	<u>END OF HOLE</u>				

*al P a*



HOLE # 10      Latitude 2300      Bearing 212°  
 Departure 196 North      Dip angle 40°  
 Elevation 24.5      Total depth 221'

Footage	Rock	Remarks	Depth	Length	No.
0 - 5	Casing	at foot of shear-wall (casing left)			
	Qtz diabase	with differentiates to basalt and and amygdaloids with several slips of pink granite at intervals.			
65		blue qtz pheno.s throughout			
	Granite Porphyry	Mlzd Calc seam	67'	8"	671
70	Diabase	Fiber grained differentiates to basalt, and pillow lava. Pyrite seams.			
93.5	Lamprophyre	Dike Fragmental and brecciated with some very coarse grained sections possibly Norite or Anorthosite			
115	Basalt	Variable to Diabase with slips of Lempro.			
117.5	Vein	Qtz-Calc. in schist with some Arsenopyrite	11"		672
		Blue-eyed porphyry - wall rock	130'	32	673
			135	30	674
		vein matter	137.5	18	675
		leaner mlzd " "	140	16	676
			141.5	12	677
149		wall rock	142.5	14	678
	Andesite	Becoming schisted to			
153	"	Breccia with later schisting calcite seam	160	8	678
162	Felsite	Probably Andesite -- porphyritic and considerably schisted.			
170	Vein	Qtz.Calc. with pyrotite and Chalco.		20"	679
172	Diorite	Porphyry Schisted			
174	Schist				
175	Vein	Qtz-Calcite with Pyro and Pyrite		7.5	680
				18	691
180	Schist	Grey-green			
	Qtz Porphyry	Has deep blue pheno.s takes on appearance of diorite with same blue pheno.s and becomes brecciated at			
183					
189	Breccia	Qtz diorite with diabase differentiates. with qtz seams at 206	189	16"	682
			194	15"	683
			206	6"	684
221.	<u>END OF HOLE</u>				

*al. R. S. in*

HOLE # 11

Latitude 2300  
Departure 470  
Elevation 29'Bearing 212 °  
Dip angle 54°  
Total depth 402'

Footage	Rock	Remarks	Depth	Length	No.
0 - 7'	Casing	Some boulders- casing drawn.			
	Basalt	Pillow Lava a lot of chopped up & lost core some mineralization, with granite elips			
46	Breccia	10" gran. porph at 31 and 33 38 and 40 Section highly altered with mud seam (Argil) and andesite dike, qtz porph etc. in heavily comminuted, re-cemented breccia.			
69	Basalt	From 58 to 60 Pyrite seam follows core. Older series.			
71	Porphyry				
73	Basalt	Pillow lava with elips of pink granite at 88, 94 99			
99	Lamprophyre	beside VEINMATTER		18"	691
101	Diorite				
127	Diorite Porphyry				
134	Lamprophyr				
139	Granite				
140.5	Basalt	with variable phases and differentiates.			
163	Gran. Porphyry				
168	Breccia	at 177 14" gran. porph. followed by rather coarse brecciation having Greenstone and Gran. fragments in finer comminution. at 194 granite follows core for 6 ft.			
197	Basalt	with differentiates			
225	Vein	Calcite 12" with no visible mln.			
226	Greywacke	Crumpled schist - possibly Tuff. if origin in small seam can be explained.			
228	Porphyry	Andesite - good local mln.			
235	Greywacke	same as previous - brecciated.			
236	Breccia	Black- very hard silicified, schisted with some mln. Visible gold scraped by drill on end of small piece of core	246	6"	692
	Vein	of Qtz & Calcite with pyrite		12	693
	Breccia	Coarse - granitic.	247.5	12	694
276	Felsite	Dike 20"			
	Basalt	Pillow lava. Schisted with 20" trachite			
302	Breccia	Felsite Porph dike (300')			
307	Gabbro.				

HOLE # 11.

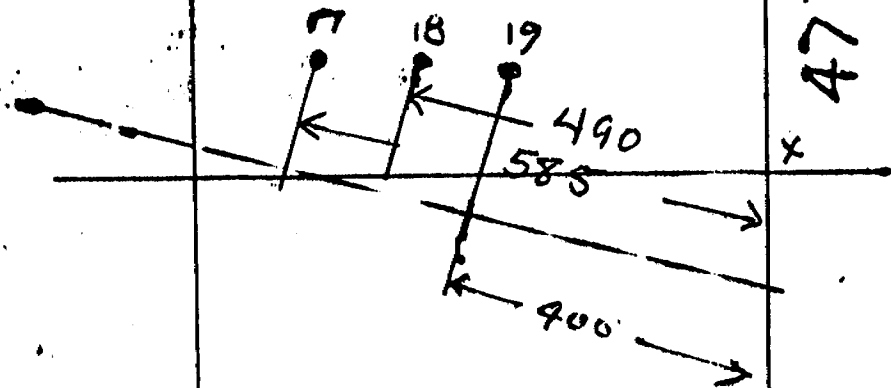
Page 2.

Footage	Rock	Remarks	Depth	Length	No.
307	Gabbro	minor dyke			
311	Basalt	Alters to Breccia with local s lips of felsite and some schisting.	321'	15"	698
			350	26"	699
350	Shear-zone	Contact	367	22	700
353	Diabase	fractured, altered with inclusions of andesite and pillow lava structure			
402	<u>END OF HOLE.</u>				

*Ch. R. J.*

47771

47772



S.  
47769

STRATHMORE

47770

Lat 90244

Chesgo Mining  
Ltd.

HOLE 17

Lat 505  
Dep 100

Bearing 202°  
Dip Angle 45°  
Total depth 253 ft.

0 - 19	Casing	Large boulders encountered.	Samples
19 - 44.5	Diorite	Brecciated & Mlzd with some schisting	866 - 870
44.5 - 64.5	Gran-di	Variable, calcite seams some mlzn.	871 - 875
64.5 - 66	Argillite	Enclosed seam	
66 - 92.5	Grano di	to meta diorite - Brecciated, mlzd	876 - 879
92.5 - 106	Greywacke	with closely packed pyrite - digested cut vein # 3 for 6 inches	879 - 883
116 - 147	Andesite	Pyrrhotite 70 Calco 30 of mlzn from 144'	883 - 886
147 - 169	Vein matter	Porphyritic - CalcO, Pyrite etc.	887 - 893

HOLE 17

Lat 505  
Dep 100

Bearing 202°  
Dip Angle 45°  
Total depth 253'

169 - 172	Greywacke	No mlzn. dry ash rock (tuff)	
172 - 198	Grano-diorite	small enclussion & greywacke	
198 - 204	Lamprophyre		
204 - 239	Granite	Slips of felsite - pegmatitic	
239 - 240	Breccia		
240 - 242	Quartz Vein	21" white qtz no mlzn	
242 - 44	Grano-diorite	grey, finegrained, brecciated	
244 - 247	Aplite		
247 - 251	Greywacke	sheared and hornblende developed.	
251 - 253	Brecciated gran-di		

END OF HOLE.

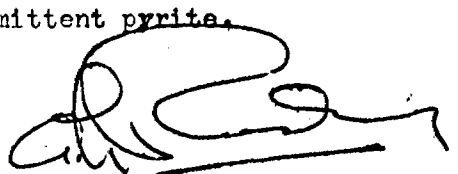
HOLE 18

Lat 490  
Dep 170

Bearing 215°  
Dip angle 45°  
Total depth 402'

0-12 Casing  
12.18 Qtz diorite  
18 - 20 Syenite dyke  
20 - 23 Qtz diorite  
23 - 62 Granite to dioritic 15" mzn  
62 - 185 Meta-argillite hard siliceous  
185 - 105 Grano diorite  
105 - 121 Meta-basalt with 8' diorite in middle.  
121 - 125 Granite dyke  
125 - 176 Meta-argillite altering to grano-diorite to porphyry  
176 - 203 Andesite with heavy mineral at 185 with wide lamprophyre dyke  
203 - 221 Qtz diorite  
221 - 226 Lamprophyre  
226 - 238 Qtz diorite to meta diorite  
238 - 246 merges to grano-diorite with chlorite evident.  
246 - 250 Andesite compact green  
250 - 285 Diorite with 5' inclusion of tuff, becoming brecciated  
285 - 336 Brecciated zone with small granite dyke and 2' andesite  
336 - 362 Grano-diorite brecciated, with jasper & epidote  
362 - 378 Breccia  
378 - 380 Argillite inclusion (possibly tuff)  
380 - 391 Breccia granitic fine grained, with some pyrite  
391 - 402 Breccia Granite with heavy intermittent pyrite.

END OF HOLE.



HOLE 19

Lat 400  
Dep. 165

Bearing 205°  
Dip angle 50°  
Total depth 340.5

0 - 51 casing many boulders required blasting  
51 - 105 Gabbro with diabase and andesite differentiates at 77' lamprophyre  
105 - 107 Aplite dyke  
107 - 118 Gabbro brecciated  
118 - 148 Meta diorite high alteration as above  
148 - 159 Highly brecciated zone dioritic  
159 - 180 Diorite brecciation diminishing - merging into argillaceous  
180 - 189 Tuff Residual ash with amygdaloids of pyrite etc.  
189 - 250 Diabase with two minor diorite dykes  
250 - 286 Highly altered granitic breccia to meta-diorite to grano-diorite  
286 - 287 Vein Well mineralized.  
287 - 301 Gabbro  
301 - 309 Lamprophyre  
309 - 315 Meta-diorite  
315 - 322 Andesite with calcite seams  
322 - 340.5 Breccia Dioritic to grano-dioritic.

END OF HOLE.

