



41P12SW0124 17 YEO

010

DIAMOND DRILLING

TOWNSHIP: YEO TWP.

REPORT NO: 17

WORK PERFORMED FOR: Chesbar Resources Inc.

RECORDED HOLDER: Same as Above [xx]
: Other []

<u>Claim No.</u>	<u>Hole No.</u>	<u>Footage</u>	<u>Date</u>	<u>Note</u>
P 917047	B-88-4	306'	Feb/88	(1)
P 917050	B-88-14	355'	Mar/88	(1)
P 917051	B-88-18	325'	Mar/88	(1)
P 917049	B-88-21	355'	Mar/88	(1)

Notes: (1) #W8806.255, filed in Jan/89

DIAMOND DRILL RECORD

NAME OF PROPERTY CHESBAR/BLACK
 HOLE NO. B 88-4 LENGTH 306
 LOCATION 0+50N, 7+50W
 LATITUDE _____ DEPARTURE _____
 ELEVATION _____ AZIMUTH 180° DIP -45
 STARTED Jan. 31/88 FINISHED 2 Feb 88

FOOTAGE	DIP	AZIMUTH	FOOTAGE	DIP	AZIMUTH
245	-41				

HOLE NO. B 88-4 SHEET NO. 1

REMARKS BQ core

[Signature] 26 May 88
 LOGGED BY Michael Patino

FOOTAGE		DESCRIPTION	SAMPLE			ASSAYS						
FROM	TO		NO.	% SULPHIDES	FOOTAGE			%	%	OZ/TON	OZ/TON	
		FROM			TO	TOTAL						
0	10'	CASING			16	21	5					
10'	20.8	CHLORITE-BIOTITE DYKE small biotite crystals up to 1/8" in length randomly oriented but general trend CA 65°, in chlorite epidote ground mass, non-magnetic distinctive, CA 40° at lower contact			21	22	1					
					27	29	2					
20.8	80.4	GRANODIORITE generally light colored up to 60% quartz, some hematite staining minor fractures filled w magnetite 221.1 - .8 fine grained, schistose, light green, chlorite w feldspar & minor carbonate, quartz vein 1" bottom contact magnetitic CA 65° 27.3-28.2 fine grained slightly brecciated granodiorite, small blue quartz eyes & minor silicification in areas, CA 40° light greenish color 28.2 from this point granodiorite takes on pinkish tinge, & increasing feldspar content, blue quartz & silica gen still make up more than 40%, some minor epidote 38.9-40.6 as per 27.3-28.2 with several, up to 1" thick, carbonate veins in a chlorite rich zone CA 60° fine grained carb w brecciated edges, minor hematite/limonite 46.2-47.1 as per 27.3-28.2 with minor (-1%) sub-euhedral py crystals foliated, CA 40°			38.5	41	2.5					
					43.5	48	4.5					
					77	80	3					
					80	82	2					
					82	85	3					
					85	89	4					
80.4	89.7	SHEAR ZONE chloritic shists w irregular carbonate microfractures CA 40°			89	94	5					
					94	99	5					
89.7	115.3	GRANODIORITE gen light in color minor epidote some k-spar present in sub-hedral cx -1/8", minor magnetite clots & blebs up to 1/2" 95.6- 99.4 chloritic <u>Shear</u> w minor carbonate stringers			108	113	5					
					113	118	5					
					118	123	5					
					123	128	5					

ONTARIO GEOLOGICAL SURVEY
 ASSESSMENT FILES
 OFFICE
 SEP 14 1988
 RECEIVED

LANGRISHES - TORONTO - 366-1168

DIAMOND DRILL RECORD

NAME OF PROPERTY CHESBAR/BLACK

HOLE NO. B 88-4 SHEET NO. 2

FOOTAGE		DESCRIPTION	SAMPLE			ASSAYS			
FROM	TO		NO.	% SULPHIDES	FOOTAGE FROM TO TOTAL	%	%	OZ/TON	OZ TON
		greyish fine grained quartz eyes segments appear migmatitic fine grained diss py -1%, foliated CA 50°			128 133 5				
		107-112.2 granodiorite breccia? term used in DDH logs for B 88-152 a fine grained sometimes foliated unit cx granodiorite composition, fine grained diss py -2% occasionally massive lenses veins, blue quartz fragments with magnetite in a feldspar sericite matrix			133 138 5 138 140 2 140 143 3 143 148 5 148 153 5 153 158 5 158 161 4				
115.3	229.8	GRANODIORITE BRECCIA (SHEAR ??) as per 107-112.2 with irregular radiating concentrations of magnetite F grained diss py to euhedral cx - 1/16" gen 2-5% but concentrated areas of micro vein fractures very magnetitic, appears slightly foliated in zones CA 65° gradational top contact 120.3-123 chlorite shear wispy stringers of carbonate, dark green slightly foliated CA 75° 126.8-134.5 Chlorite Shear as per 120.3-123 appear migmatic in areas CA 55° 161.3-163 fine grained diabase, slightly mag 164.2-165.2 bullish white quartz vein w massive po & cpy CA 10°? minor chlorite up to 20% sulphides 170.5 after this point % cx sulphides tend to diss -1% 190 minor quartz vein 1/4-1/2" thick w po, cpy and hematite? 198.2-.5 minor quartz veining, discontinuous w diss po, py and blk mafic mineral (amphibolite?) hornblend clear fine grained quartz CA ~80° lenticular 204.6-211.5 very chlorite rich w developed feldspar crystals Shear foliation CA 60° 215.3-216.9 chlorite shear as per 204.6-211.5 but more foliated CA 65°			163 165.5 2.5 165.5 170.5 5 189.5 190.5 1 199 200 1 203 204 1 209.5 211.5 2 214.5 215.5 1 215.5 217.5 2 218.5 219.5 1 228 229 1 229 230 1 230 232 2				
229.8	243	FOLIATED GRANODIORITE gradational contact, less quartz content, slightly brown color much aphanitic material (sericite & feldspar) w blebs of chloritic material, foliation CA 4-45°, 1% diss py							
243	303.3	BRECCIATED GRANODIORITE as per 115.3-229.8 127.4-148.3 quartz stringers & veins with disseminated pyrite			247 249 2				

LADGES - TORONTO - 366-1166

DIAMOND DRILL RECORD

NAME OF PROPERTY CHESBAR/ BLACK

HOLE NO. B. 88-4 SHEET NO. 3

FOOTAGE		DESCRIPTION	SAMPLE			ASSAYS				
FROM	TO		NO.	2 SULPH IDES	FOOTAGE FROM TO TOTAL	%	%	OZ/TON	OZ TON	
303.3	306	265 bullish white quartz vein minor sulphides py cpy along edge with pieces of wall rock partially assimilated			255 256 1					
					256 258 2					
					261.5 263 1.5					
					263 264.5 1.5					
					271.5 274 2.5					
					274 275 1					
					276 277 1					
					277 278 1					
					278 279 1					
					301 303 2					
		303 305 2								
	306	EOH								

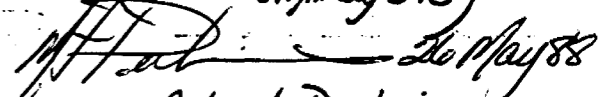
DIAMOND DRILL RECORD

NAME OF PROPERTY CHESBAR/BLACK
 HOLE NO. B88-14 LENGTH 355
 LOCATION 25+00S ; 8+15W
 LATITUDE _____ DEPARTURE _____
 ELEVATION _____ AZIMUTH 0/360° DIP -60
 STARTED Apr 5/88 FINISHED Apr 7/88

FOOTAGE	DIP	AZIMUTH	FOOTAGE	DIP	AZIMUTH
355	5730'				

HOLE NO. B88-14 SHEET NO. 1

REMARKS (Core labeled B-22 originally B-18)


 LOGGED BY Michael Perkins

FOOTAGE		DESCRIPTION	SAMPLE			ASSAYS						
FROM	TO		NO.	% SULPHIDES	FOOTAGE FROM	TO	TOTAL	%	%	OZ/TON	OZ/TON	
0	15	CASING										
15	44.2	<u>GABBRO-DIORITE</u> - massive, carbonate leaching of fractures, snowflake texture, minor quartz, green 25-26.5 chlorite-biotite dike, weathered, fine grained, blocky core, very foliated, CA 50° 30.1 Qu, 3/4", clots up to 1/4" of massive Py ≈ 10%, CA 65°; in fine grained granodiorite??, minor mafic material - tremolite?; minor Py.			29.5	30.5	1					
44.2	74.8	<u>GRANODIORITE</u> : very siliceous, oolitic?; quartz bluish & diffuse, gabbroic texture, typical w minor K-spar giving salt & pepper with a pink colour. 50.6 Qu, 1/4", bucciated, 3% fine grained Py, white, CA 50° 54.3 Qu, as per 50.6 with bluish white quartz lenses with massive Po (25%), CA 50° 64.3-65.3 Quartz veins, generally bucciated, no fixed direction fracture filling, up to 5% Po, minor Py, sericitic alt around vein, up to 4", CA 45°? 65.3-74.8 Granodiorite highly fractured, slight sericitic alt			50.5	51.5	1					
					54	55	1					
					64	65	1					
					65	66	1					
					68	69	1					
					71	72	1					
					84	85	1					

ONTARIO GEOLOGICAL SURVEY
 ASSESSMENT FILES
 OFFICE
 SEP 14 1988
 RECEIVED

DIAMOND DRILL RECORD

NAME OF PROPERTY CAESAR / BLACK
 HOLE NO. 388-14 SHEET NO. 2

FOOTAGE		DESCRIPTION	SAMPLE			ASSAYS					
FROM	TO		NO.	% SULPHIDES	FOOTAGE		%	%	OZ. TON	OZ. TON	
					FROM	TO					TOTAL
	68.2	Qu, 1/2", as per 50.6, siliceous alt ⁿ for 2" on contacts, 5% dias Po, minor 1-2% Py, CA 60°			90	91	1				
	71.5	Qu, 1/8"-1/4", along chloritic fracture, as per 50.6, dias Py+Po, CA 20°.			100	101	1				
					102	103	1				
71.8	85.2	<u>DIORITE</u> ?: fine grained, foliated, green to light green, dioritic composition but may be int-mafic volc, very folded & aphanitic at lower contact, CA 20°, minor carbonate healing of fractures			101.5	108.5	1				
					114.5	115.5	1				
					115.5	116.5	1				
85.2	293.3	<u>GRANODIORITE</u> - as per 44.2-74.8, slight pinkish colour due to K-spar alt ⁿ , massive, unfoliated, mafic alter zones along fractures			118	119	1				
	90.4	Qu, 1", as per 50.6, Py 20%, Po 5% + dias for 4", minor siliceous alt ⁿ , CA 63°			128.5	129.5	1				
	100.5-101	Chlorite Biotite dkt, brecciated upper contact, minor carb & quartz, CA 50°, Biotite ca 1/8"			131.5	132.5	1				
					132.5	133.5	1				
					133.5	134.5	1				
					137	138	1				
					140	141.5	1.5				
	102.6	Qu, 1", as per 90.4, CA 60°			143.5	145	1.5				
	107.8	Qu, 1", white-grey, massive, buffish, minor tremolite needles, 1/16"-1/8" CA 45°, minor sulfides, Po, Py dias along fracture at 108.2			145	147	2				
	115.4	Qu, 1/2", assimilated contacts, massive, grey-white, 5-10% dias Po from 114.7-116.5. minor Py along vein, CA 10°			153.5	154.5	1				
	118.7	Qu, 1/2", buffish white, 40% aphanitic mafic material, biotite? 2% Py, CA 50°			158	159	1				

LANGRIDGES - TORONTO - 366-1168

DIAMOND DRILL RECORD

NAME OF PROPERTY CHESBAR/BLACK
 HOLE NO. B88-14 SHEET NO. 3

FOOTAGE		DESCRIPTION	SAMPLE			ASSAYS				
FROM	TO		NO.	% SULPHIDES	FOOTAGE		%	%	OZ. TON	OZ. TON
				FROM	TO	TOTAL				
	129.1	Qu, 1", buffish, white, massive Py + Po up to 1/2", 20% CA 70°, fracture filling		161	162	1				
	131.9	Qu, 3", buffish, white, chlorite dot, 2" on lower contact, in light brown felsic zone. CA 50°		177	178	1				
				178	179.5	1.5				
	132.7	Qu, 2", as per 50.6, 20% disc Py, CA 65°		188.5	189.5	1				
				196	197	1				
	133.6-134.3	disc Py, CrPy + Po, Po ~ 5%, Py 5%, CrPy 1%, disc throughout microfractures		203.5	204.5	1				
	138.7-162.5	Granodiorite highly fractured								
	140.4-141.2	Qu, buffish, white, minor chlorite/tremolite, 3% massive Po, up to 1/2" dots, minor Py + CrPy ~ 1%,		215.5	216.5	1				
	144.5	Biotite + Py infilling fractures								
	147-153.5	Chlorite-Biotite Dike, slightly foliated, green-black, fine grained, slightly fractured with carbonate + quartz infilling, CA 30°								
	150.6	Chlorite/Biotite/Pyrite infilling fractures as per 144.5, minor epidote								
	161.1-161.8	Qu's, minor quartz + Py, 4%, infilling fractures, some veins similar to 50.6								
	162.5-172	Chlorite-Biotite dike - as per 147-153.5, occasional biotite ex 1/8", slight foliation, CA 35°								
	177.5-179.5	Chlorite/Biotite/Pyrite infilling fractures, as per 150.6								
	188.9	Qu, 1/4", diffuse w 1" sinuate atm envelope, CA 55°								
	196.4	Qu, 1", as per 50.6, CA 55°								

DIAMOND DRILL RECORD

NAME OF PROPERTY CHESBAR/BLACK

HOLE NO. 288-14 SHEET NO. 4

Genius Gabbro Dior. Ch. Bio. diab.

FOOTAGE		DESCRIPTION	SAMPLE			ASSAYS								
FROM	TO		NO.	% SULPHIDES	FOOTAGE			%	%	OZ. TON	OZ. TON			
					FROM	TO	TOTAL							
		204.3	Mafic alt ^r along fracture, carb lensae, 5% Py, massive + dis			240.5	241.5	1						
			CA 30°?			255	256	1						
		215.7	Qu, 1/2", as per 50.6, 20% Py, CA 55°			259.5	261	1.5						
		241	Qu 1/2", as per 50.6, 40% Py, 3" sericite alt ^r along contacts			268.5	269.5	1						
			CA 70°											
		246.1-248.2	Diorite lensae?, black, snowflake texture but ~30% blue quartz eyes, more epidote alt ^r than upper zones in granod.											
		255.6-260.6	Choute-Biotite Dike: fine grained with upper contact, 1" massive, buffish white quartz + minor quartz lenses some with 5% Py, CPy disc, CA 30°			320	321	1						
		274-283.3	Granodiorite, fractured, K apex alt ^r , clear quartz infilling diorite lensae/inclusions			332.5	333.5	1						
						342	343	1						
283.3	312.9	<u>DIORITE - GABBRO-DIORITE</u> - green, fine grained at contact, CA 60° gabbro exhibits snowflake texture, massive, microfractured carbonate healed				354	355							
312.9	355	<u>DIORITE</u> - green, fine grained to aphanitic, minor cherting for top 9', 312.9-321.5, fol CA 25°, much fracturing, carb healed, no sulfides												
		333	Qu, 1", white-clear, massive buffish, minor chlonte, no sulphides CA 40°											
		342.5	Qu, as per 333, CA 55°, minor carbonate											
		354.4	Qu, 3", as per 50.6, ~3% Py, epidote, some Py disc in surrounding fine grained diorite.											
355	355	EOH												

LANGRIGES - TORONTO - 366-1168

DIAMOND DRILL RECORD

NAME OF PROPERTY CHESBAR/BLACK
 HOLE NO. B88-18 LENGTH 325
 LOCATION 10+50S; 11+20W
 LATITUDE _____ DEPARTURE _____
 ELEVATION _____ AZIMUTH 216° DIP -45°
 STARTED Apr 8/88 FINISHED April 188

FOOTAGE	DIP	AZIMUTH	FOOTAGE	DIP	AZIMUTH

HOLE NO. B88-18 SHEET NO. 1
 REMARKS Box marked B88-4 originally
M.P.D. 26 May 88
 LOGGED BY Michael Perkins

FOOTAGE		DESCRIPTION	SAMPLE			ASSAYS						
FROM	TO		NO.	% SULPHIDES	FOOTAGE FROM	FOOTAGE TO	FOOTAGE TOTAL	%	%	OZ/TON	OZ/TON	
0	8	CASING										
8	325	GRANODIORITE: felsic, green/grey, blue quartz eyes, appears weathered top 25', slightly deformed, zones of fine grained w. aegirine common, generally massive + competent, minor quartz + carb healing of fractures.			35	36	1					
26.5	42	Chlorte-Biotite Dike/Shear: upper + lower contacts diffuse, minor foliation, carb healing + lenses (1/2") L V ₂ Py,			52.5	53.5	1					
35.3	36	Qu, white, bullish, minor carb at upper contact, 0.5% Py at contacts, late genesis, massive, minor chl, CA 70°			55	56	1					
42	63.8	Granodiorite, fine grained, altered, ~20% aegirine, blue quartz eyes 1/16-1/8", light green, some foliation, CA 60°, competent.			60	61	1					
52.8	53.3	Qu, 1-2", discontinuous, white, bullish, barren, pygomatic, minor carbonate, gen low CA trend (10°)			78.5	79.5	1					
60.4	60.8	Qu's, 1/2", grey/purple, may be lenses of felsic granod., no min CA 70°			82	83	1					
63.4		Qu, 1", white, barren, bullish, minor dolomite along contacts CA 40°										
77.5	99	Granodiorite as per 42-63.8										
79		Fracture, 1/2", minor decalcification, 5% Py, minor chlorte, CA 65°										

CANADIAN GEOLOGICAL SURVEY
 ASSESSMENT FILES
 OFFICE
 SEP 12 1988
 RECEIVED

DIAMOND DRILL RECORD

NAME OF PROPERTY CHESBAR/BLACK
 HOLE NO. B88-18 SHEET NO. 2

FOOTAGE		DESCRIPTION	SAMPLE			ASSAYS				
FROM	TO		NO.	% SULPH IDES	FOOTAGE		%	%	OZ. TON	OZ. TON
				FROM	TO	TOTAL				
82.6		Chloritic fracture, 1/2", subhedral Py ~ 1/16 - 1/8", disc throughout 4" either side.		88.5	89.5	1				
88.7-90		chloritic fractures w subhedral & disc Py as per 82.6, CA 50°		89.5	90.5	1				
99-107.5		Granodiorite, pink, fine grained, highly fractured zones w mafic material infilling fractures 1/16 - 1/8", prefer'd die generally CA 35°		115.5	117	1.5				
115.5-120.1		Chlorite-Biotite Dike, fine grained, minor foliation, CA ~ 45° some biotite ~ 1/8"		158	158.8	0.8				
115.6-116.8		Qu, milky white, fine grained - massive, chloritic contacts, no mineralization, CA 30°		191	192	1				
126.2-215		Granodiorite has slight pink-red colour - K Spar.		192	193	1				
158.6		Carbonate vein, 1/4", fracture healing, 1% massive Py, CA 60°		280	281	1				
191-193		Granodiorite, fine grained, aegirine, 1% disc Py, Qu at 192.3, 1/2" w 3% massive Py, grey-blue, massive, CA 60°								
248.6-251		Chlorite-Biotite Dike: fine grained, dolomitic clots, fine grained contacts, foliated at contacts CA 55°, surrounding granodiorite has high plag content & small blue quartz eyes, less siliceous than normal.								
264.8		Minor chloritic fracture, carbonate infilling, minor hematite stain ~ 0.5% Py. 2", CA 60°								
280.1-280.8		Granodiorite, fine grained aegirine, Qu at center, 1/4-1/2", discontinuous clear-white, diffusal contacts								

LANGRIDGES - TORONTO - 366-1168

DIAMOND DRILL RECORD

NAME OF PROPERTY CHESBAR/BLACK

HOLE NO. 888-1B SHEET NO. 3

FOOTAGE		DESCRIPTION	SAMPLE			ASSAYS								
FROM	TO		NO.	% SULPHIDES	FOOTAGE			%	%	OZ. TON	OZ. TON			
					FROM	TO	TOTAL							
		306.7	Qu, 1/2", clear-white, fine grained, associated contacts minor hematite stain, $\leq 1\%$ disc Py in surrounding Rx, CA-10°			306.5	307.5	1						
		309	Qu, 1", as per 306.7 but barren, minor felsic ex, dolomite?			310	311	1						
		310.6-315.4	Qu, milky-white, fine grained, minor chlorite, + tremolite? some fractures contain massive Py + Po			311	312	1						
						312	313	1						
						313	314	1						
						314	315	1						
						315	316	1						
325	325	EOM												

DIAMOND DRILL RECORD

NAME OF PROPERTY CHESBAR/BLACK
 HOLE NO. B88-21 LENGTH 355
 LOCATION 25+50S, 5+25W
 LATITUDE _____ DEPARTURE _____
 ELEVATION _____ AZIMUTH 0 (360°) DIP -45
 STARTED 3 Mar 88 FINISHED 4 Mar 88

FOOTAGE	DIP	AZIMUTH	FOOTAGE	DIP	AZIMUTH
355	41°	—			

HOLE NO. B88-21 SHEET NO. 1

REMARKS
[Handwritten signature]
 LOGGED BY Michael Perkins

FOOTAGE		DESCRIPTION	SAMPLE			ASSAYS					
FROM	TO		NO.	% SULPHIDES	FOOTAGE FROM TO TOTAL	%	%	OZ/TON	OZ/TON		
0	6	CASING									
6	31.9	<p><u>GRANDIORTITE BRECCIA + GABBRO DIORITE</u>: gabbrodiorite at collar for 2' then fine grained granodiorite, breccia? greyish w fine blue quartz eye, $\alpha \pm 10^\circ$, minor barren crosscutting Qz's, no foliation</p> <p>15-18 Gabbrodiorite; slightly altered, quartz conc into sills, minor biotite, green, fol CA $\pm 50^\circ$</p> <p>20.5 $\frac{1}{4}$" grey Qz's, barren, diffuse contacts, CA 50°</p> <p>23.6 $\frac{1}{2}$" white-grey Qz, minor chl, $\leq 0.1\% \text{Po}$, as per 20.5, CA 25°</p>			20.5	21.5	1				
					23	24	1				
					37.5	38.5	1				
					43.5	45	1.5				
					50	51.5	1.5				
					60	61.5	1.5				
					67	68	1				
					68	69.5	1.5				
31.9	67.2	<p><u>GRANDIORTITE</u>: generally altered near surface, brecciated with many small grey-green fine grained - aphanitic zones, fractures carbonate healed, becomes more typical granodiorite texture (coals + pepper) near bottom</p> <p>44.2 Qz, $\frac{1}{2}$", massive Py, associated grey quartz in fine white, disc py $\alpha \pm 10^\circ$ on other side in fine grained, aphanitic alt \pm envelope. CA 70°</p> <p>46.8-47.2 chlorite Dk?; green, fine grn - aphanitic intrusive, may be magmatic differentiation, more chloritic, brecciated, partially assimilated contacts, CA $2-60^\circ$</p> <p>49.1-50 As per 46.8-47.2, minor epidote</p> <p>50.3-51.1 As per 46.8-47.2, chlorite much more oxidized + ochreous, conc angle low $\approx 20^\circ$, minor quartz/carbonate healing, dark green (minor fine grn biotite?)</p>			69.5	70.5	1				
					70.5	72	1.5				
					72	74	2				
					74	76	2				
					76	78	2				
					78	80	2				
					80	82	2				

ONTARIO GEOLOGICAL SURVEY
 ASSESSMENT FILES
 OFFICE
 SEP 14 1988
 RECEIVED

DIAMOND DRILL RECORD

NAME OF PROPERTY CHESBAR/BLACK
 HOLE NO. B88-21 SHEET NO. 2

FOOTAGE		DESCRIPTION	SAMPLE			ASSAYS						
FROM	TO		NO.	% SULPHIDES	FOOTAGE FROM	TO	TOTAL	%	%	OZ/TON	OZ/TON	
67.2	58.7	60.9 - 1/4" Qz, disc Py 5%, minor CrPy, siliceous, disc Py for 6" either side ± 1% CA 40°	82		84		2					
			84		86		2					
		<u>CHLORITIC DIKE/SHEAR</u> - old chloritic dike, has been sheared, light green, generally aphanitic - fine grained, some fol zones CA 35°, old fractures w quartz healing, gen 1/8" in width.	86		87.5		1.5					
			87.5		88.5		1					
			89.5		90		1					
			90		91		1					
			91		92		1					
			103		104		1					
			109.5		110.5		1					
			112.5		113.5		1					
88	176.7	70.5 - Shear, quartz w 5% Py over 6", fol CA 35°, chlorite → epidote, slight acclination folding	114.5		115.5		1					
		84 Qz, 1", discontinuous, white, barren, CA	115.5		116.5		1					
		88 Lower contact, CA 50°, 1/2" brecciated Qz, massive → subhedral Py 50%, disc on - subhedral Py 10% for next 6" in granodiorite.	116.5		117.5		1					
		<u>GRANODIORITE</u> - gen very felsic with zones of K-spar alt + increasing feldspar content lower in hole, competent with many 1/2"-2" mafic zones (mafic along fractures?)	117.5		118.5		1					
		89.7-90.4 Quartz vein, clear-white, massive coarse grained, 10-20% massive Py, minor Po, minor hematite along fracture, CA 80°	127.5		128.5		1					
		91.5 Qz, minor Py, no CA	128.5		129.5		1					
		103.1-104 Qz, chlorite, buff, white, CA 45°, minor 1" clots of massive Po+Py.	129.5		130.5		1					
		110.1 1/8" Qz, 5% Py + Po, Py + Po disc over 1 foot, dark grey → black, due to increased mafics (magnetite?), CA 65°	132		133		1					
		112.8 1/2" Qz, barren with minor tremolite, some needles subhedral. 1/4", CA 40°	135		136		1					
		114.7 A o per 110.1, CA 45°	136.5		137.5		1					
116.1 1/2" Qz brecciated, massive Py 60%, minor Po (5%) disc in fine grained granodiorite, next 4", CA 60°	137.5		138.5		1							
118 A o per 116.1, CA 60-70°	147		148		1							
	151		152		1							
	153		154.5		1							

LANGRIDGES - TORONTO - 366,1168

DIAMOND DRILL RECORD

NAME OF PROPERTY CHESBAR/BLACK

HOLE NO. B88-21

SHEET NO. 3

FOOTAGE		DESCRIPTION	SAMPLE			ASSAYS					
FROM	TO		NO.	% SULPHIDES	FOOTAGE			%	%	OZ TON	OZ TON
					FROM	TO	TOTAL				
	124.8-127.3	minor Kspae alt ₂ + chlonte along $\frac{1}{8}$ " shears.									
	127.8-129.8	Carbonate veins, 1-2", white - slightly pink, lower contact $\frac{1}{8}$ - $\frac{1}{4}$ " massive Py + Pb, veins appear to be in a minor chlonite shear, fol CA 50°			162.5	163.5	1				
	132.9	$\frac{1}{2}$ " Qu, minor chl, 2% disc Py in fine grained alt ₂ envelope, minor Pb CA 45°			170	171					
	135.2	$\frac{1}{4}$ " Qu, CA 45°, fracture filling, minor chlonite, Py + Pb \approx 3%			178	179					
	137	$\frac{1}{4}$ " Qu, brecciated, non Py + Pb 25%, CA 70°, alt ₂ zone 2" either side of fragn granodiorite w sericite.			181.5	182.5					
	137.4	as per 137									
	137.8	as per 137									
	147.6	as per 137 but $\frac{1}{2}$ " CA 75°									
	153.4-153.8	lens of mafic material, prob caused by silicious fluids pinching contacts, minor Pb									
	156.7-157.3	False band, light brown, minor mafic banding, CA 30°, generally aphanitic									
	162.7	Mafic band, 3", similar to one in 156.7-157.3, chlonte along fracture.									
	170.1	Qu, $\frac{1}{2}$ ", mafic clots up to 50%, tremolite?, biotite, quartz has bluish colour, \approx 1% Py, magnetic, CA 30°									
	178.4	Qu . 2", white, bluish, barren, minor chlonte, CA 45°									
178.9	183.1	<u>DIORITE CONTACT ALTERATION</u> : fine grained, massive, compact minor inclusions, 1", of granodiorite, very small blue quartz eyes, minor chlonte,									

DIAMOND DRILL RECORD

NAME OF PROPERTY CHESBAR/BLACK

HOLE NO. B88-21 SHEET NO. 4

FOOTAGE		DESCRIPTION	SAMPLE			ASSAYS					
FROM	TO		NO.	% SULPHIDES	FOOTAGE		%	%	OZ TON	OZ TON	
					FROM	TO					TOTAL
183.1	182.3	GABBRO-DIORITE - dark green, typical snowflake texture, minor zones of fine grained, competent, no foliation, few fractures			204	205	1				
		204.5-207.8 Chlorte - biotite dikes, irregular contacts, Qu 3" w brecciated margins at 206.5, barren, fine grained, CA 15°, carb			206	207	1				
		210.8 Qu, carbonate, 1.5", CA 55°, bluish, no min, minor tremolite?			210.5	211.5	1				
		216.3 Qu, minor carbonate, 1", clear-white, bluish, brecciated margins CA 55°			216	217	1				
		228.6-229.8 Felc zone, light brown, silicious, aphanite to fine grained, as per 156.7-157.3			228.5	230	1.5				
		234.5-237.5 Granodiorite lenses, much feldspar, pinkish tinge, tends towards coarse grained, diorite has fine grained contacts for 1", zirconite?			242	243.5	1.5				
		242.3-243 Qu, bluish, white, minor chlorte, tremolite??, appears that top contact is assoc with 6" granodiorite, no sulphides, CA 60°			272.5	273.5	1				
		243.3-244.3 Diorite, fine grained + massive, few fractures, green			273.5	294	0.5				
		257-267 narrow granodiorite inclusions, 1"-1' in size, some contain light grey aphanite fragments. CA 55°, approx 25% of total			278	279	1				
		272.8 Qu, blue-white, irregular, Pot Cpy less 5%, 1", CA 50°			279	280	1				
		273.5 Qu, 1/2" as per 272.8			280	281	1				
		278-281.8 Qu's, up to 1", filling fractures, minor Pot Cpy ≈ 1%, no fixed direction, healing?			281	282	1				

DIAMOND DRILL RECORD

NAME OF PROPERTY CHESBAR/BLACK

HOLE NO. B88-21 SHEET NO. 5

FOOTAGE		DESCRIPTION	SAMPLE			ASSAYS					
FROM	TO		NO.	% SULPHIDES	FOOTAGE		%	%	OZ. TON	OZ. TON	
					FROM	TO	TOTAL				
282.3	296.7	GRANODIORITE; generally very siliceous, white-grey in colour, no Ksp, generally gabbroic, minor diorite units & 1" enclosed.			296	297	1.5				
		299.4 Qv, 1/4", clear, CA 25°, minor dark mineral along contacts			297	298.5	1.5				
296.7	355	DIORITE/GABBROIC?, fine grained, mafic w Qv at 296.7, 1", folded; CA 40° carbonate vein CA ± 15° between 298.5 - 299.5, milky white; diorite is massive w granodioritic inclusions, low CA.			298.5	300	1.5				
		305.7 Diorite continues, generally fine grained with inclusions of granodiorite, occasionally exhibits the snowflake texture of gabbro-diorite.			305	306	1				
		320 Qv, 1/2", clear-white, CA 35°, no sulphides.									
355	355	EOH									



Name and Postal Address of Record Holder
CHESBAR RESOURCES INC. T4850
 36 Toronto Street, Suite 950, Toronto, Ontario M5C 2C5
W8806-255 *VED TWP a Charter Tap*

Summary of Work Performance and Distribution of Credits

Total Work Days Cr. claimed 1341	Mining Claim			Mining Claim			Mining Claim		
	Prefix	Number	Work Days Cr.	Prefix	Number	Work Days Cr.	Prefix	Number	Work Days Cr.
for Performance of the following work. (Check one only) <input type="checkbox"/> Manual Work <input type="checkbox"/> Shaft Sinking Drifting or other Lateral Work. <input type="checkbox"/> Compressed Air, other Power driven or mechanical equip. <input type="checkbox"/> Power Stripping <input checked="" type="checkbox"/> Diamond or other Core drilling <input type="checkbox"/> Land Survey	P	917047	160						
		917048	160						
		917049	160						
		917050	160						
		917051	160						
		980498	180						
	980499	180							
	980500	181							

ONTARIO GEOLOGICAL SURVEY
 ASSESSMENT FILE
 OFFICE
 SEP 14 1988
 RECEIVE

All the work was performed on Mining Claim(s): **P917047, 917050, 917051, P917049 BB**

Required Information eg: type of equipment, Names, Addresses, etc. (See Table Below)

RECEIVED
 JUN 8 1988

1341 feet of BQ drilling using a track mounted Longyear 38 owned and operated by:
American Mine Services, Inc.
 55 University Avenue
 Suite 309
 Toronto, Ontario
 M5J 2H7

Drilling was completed between January 31 to March 11, 1988.
 Core logs and work sketch (1:2400 Base Map) attached

RECORDED
 JUN 06 1988

Date of Report: May 26, 1988
 Recorded Holder or Agent (Signature): *[Signature]*

Certification Verifying Report of Work

I hereby certify that I have a personal and intimate knowledge of the facts set forth in the Report of Work annexed hereto, having performed the work or witnessed same during and/or after its completion and the annexed report is true.

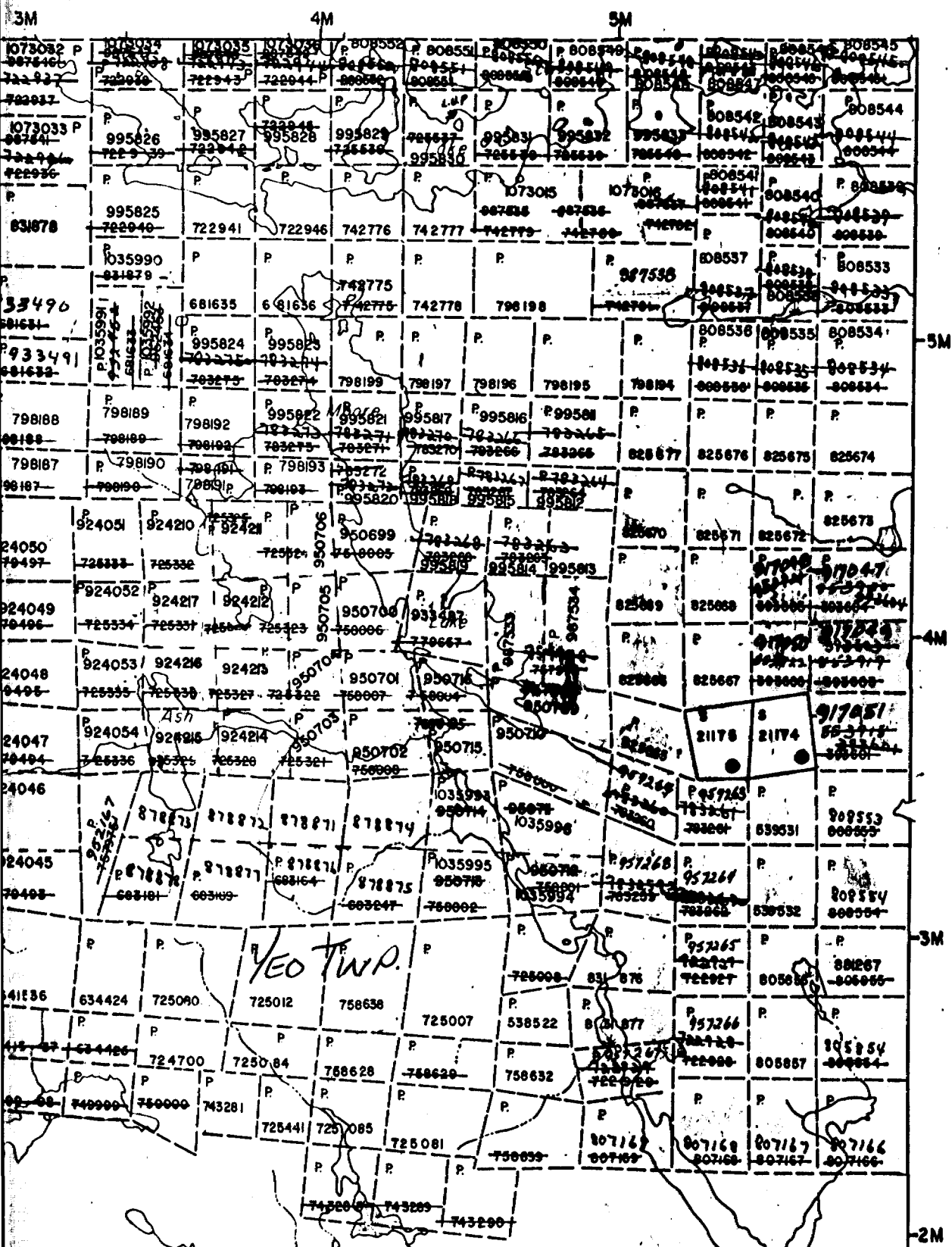
Name and Postal Address of Person Certifying
Michael J. Perkins, Chesbar Resources Inc., 36 Toronto St. Suite 950
Toronto, Ontario M5C 2C5

Date Certified: May 26, 1988
 Certified by (Signature): *[Signature]*

Table of Information/Attachments Required by the Mining Recorder

Type of Work	Specific information per type	Other Information (Common to 2 or more types)	Attachments
Manual Work	Nil	Names and addresses of men who performed manual work/operated equipment, together with dates and hours of employment.	Work Sketch: these are required to show the location and extent of work in relation to the nearest claim post.
Shaft Sinking, Drifting or other Lateral Work			
Compressed air, other power driven or mechanical equip.	Type of equipment	Names and addresses of owner or operator together with dates when drilling/stripping done.	
Power Stripping	Type of equipment and amount expended. Note: Proof of actual cost must be submitted within 30 days of recording.		
Diamond or other core drilling	Signed core log showing; footage, diameter of core, number and angles of holes.		Work Sketch (as above) in duplicate
Land Survey	Name and address of Ontario land surveyor.	Nil	Nil

TWP.



HIGHWAY
 OTHER RO
 TRAILS
 SURVEYED
 TOWNSH
 LOTS, M
 UNSURVEY
 LOT LIN
 PARCEL
 MINING
 RAILWAY
 UTILITY LI
 NON-PEREM
 FLOODING
 SUBDIVISIO
 RESERVAT
 ORIGINAL
 MARSH OR
 MINES
 TRAVERSE

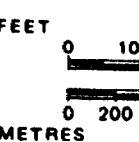
DISPO

TYPE OF D

PATENT, SU
 " , SU
 " , MI
 LEASE, SUR
 " , SUR
 " , MIN
 LICENCE OF
 ORDER-IN-C
 RESERVATI
 CANCELLED
 SAND & GRA

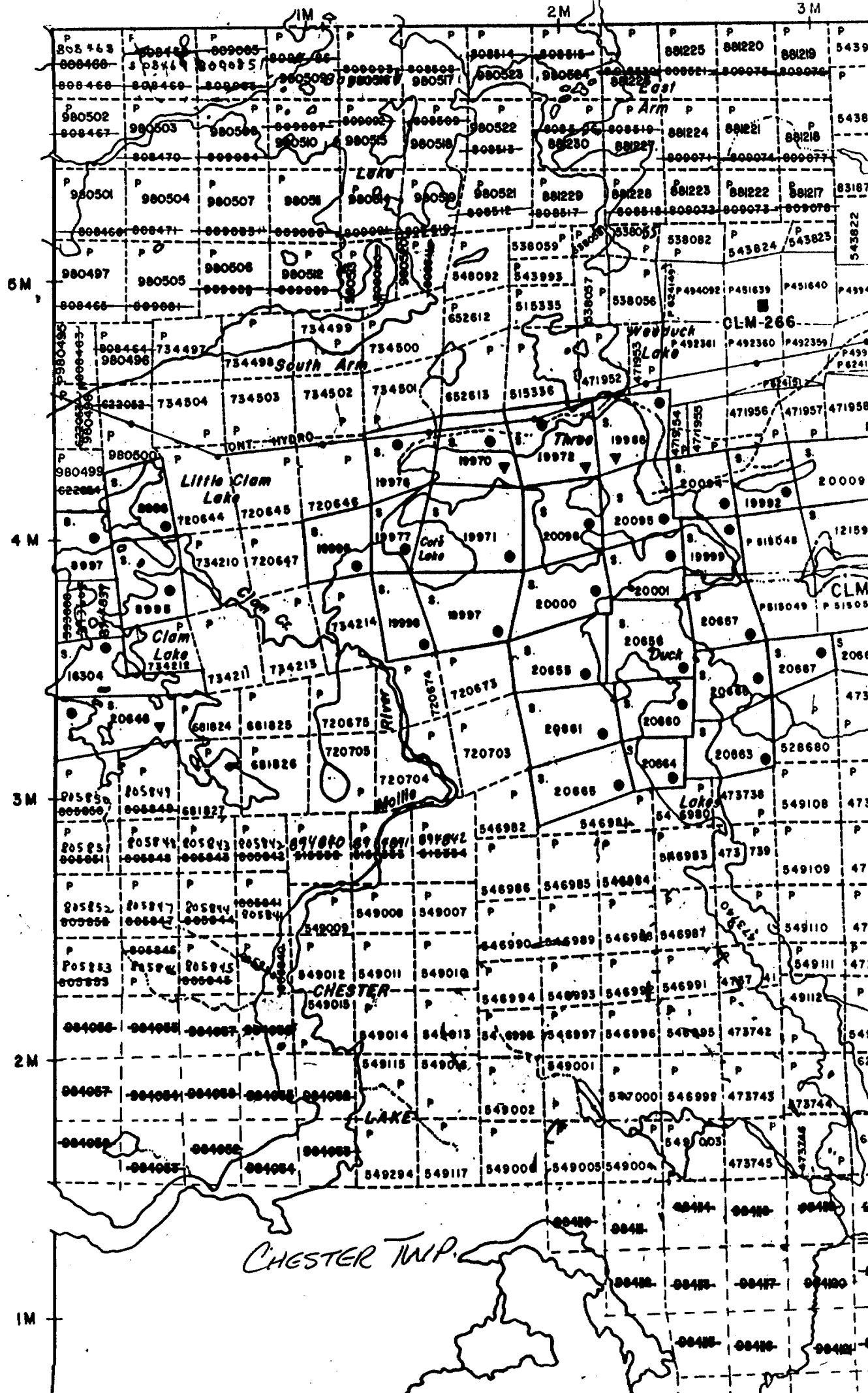
NOTE: MINING
 1913, V
 LANDS

SCALE: 1 I

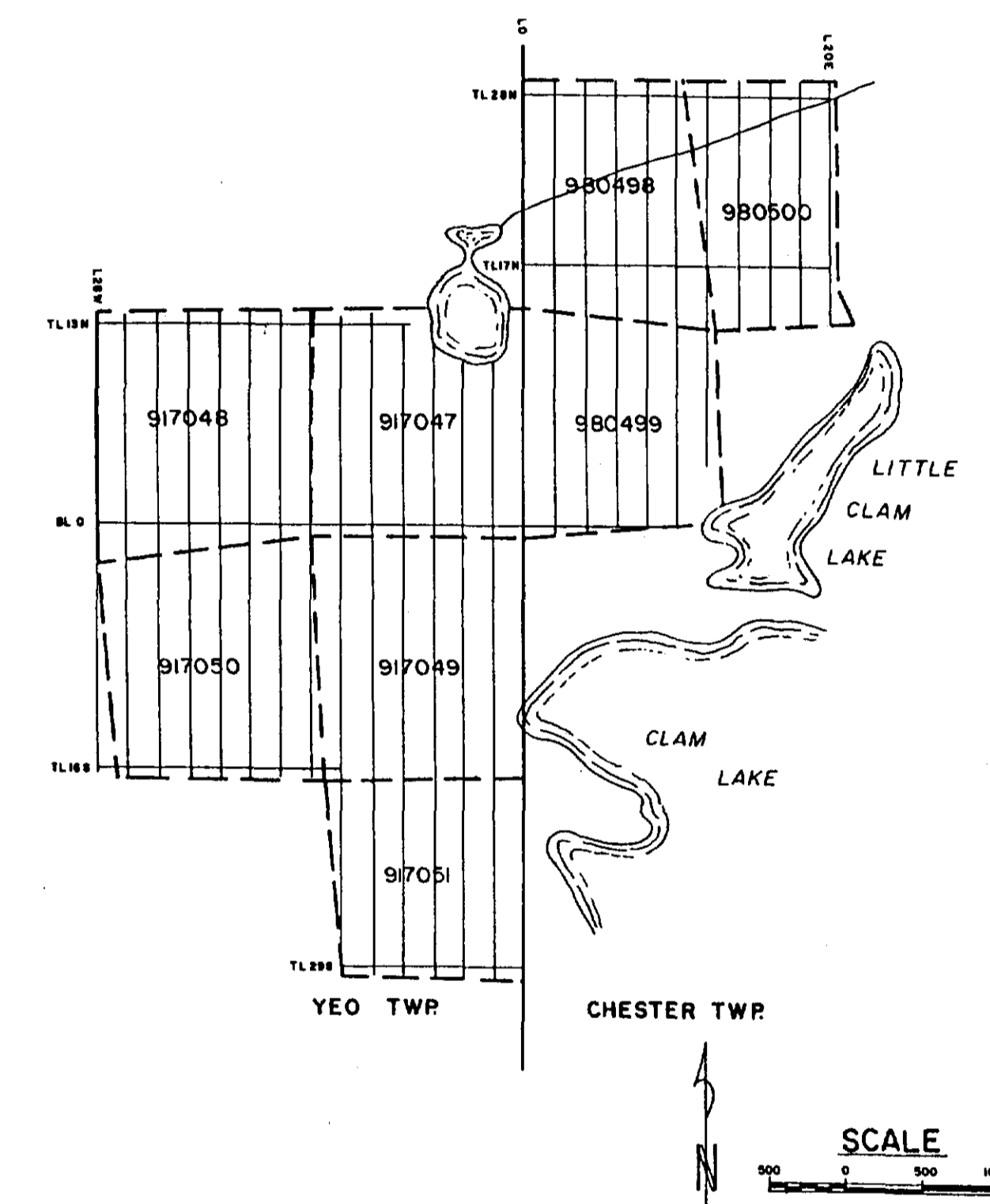
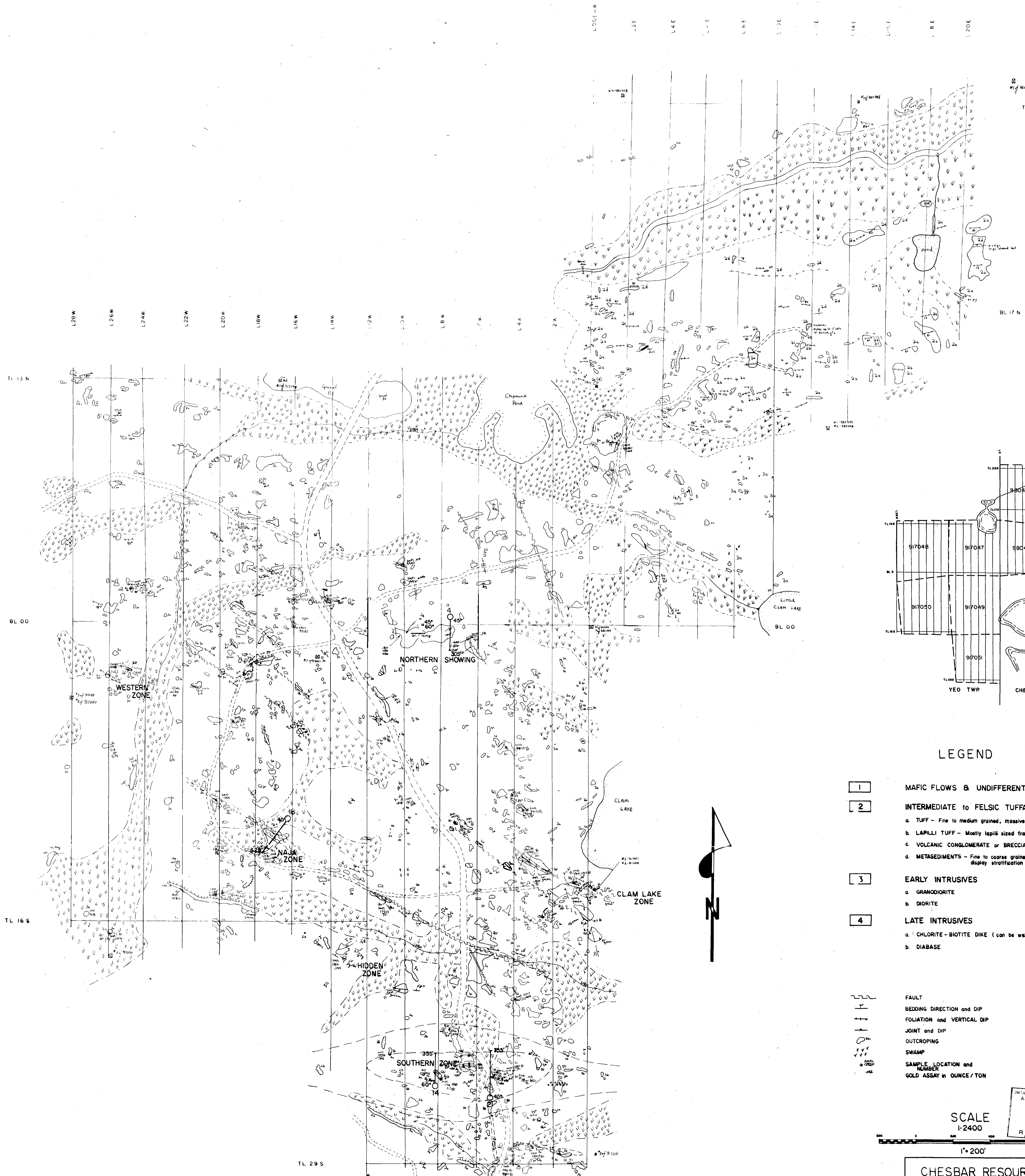


CHESTER TWP.

YEO TP.



CHESTER TWP.



LEGEND

- 1** MAFIC FLOWS & UNDIFFERENTIATED VOLCANICS
 - 2** INTERMEDIATE to FELSIC TUFFACEOUS METASEDIMENTS
 - a. TUFF - Fine to medium grained, massive, very siliceous, occasional bomb
 - b. LAPILLI TUFF - Mostly lapilli sized fragments, occasional bomb
 - c. VOLCANIC CONGLOMERATE or BRECCIA
 - d. METASEDIMENTS - Fine to coarse grained, micaceous, fissile, occasionally display stratification and graded bedding
 - 3** EARLY INTRUSIVES
 - a. GRANODIORITE
 - b. DIORITE
 - 4** LATE INTRUSIVES
 - a. CHLORITE-BIOTITE DIKE (can be well foliated)
 - b. DIABASE
-
- FAULT
 - BEDDING DIRECTION and DIP
 - FOLIATION and VERTICAL DIP
 - JOINT and DIP
 - OUTCROPPING
 - SWAMP
 - SAMPLE LOCATION and NUMBER
 - GOLD ASSAY in OUNCE/TON
-
- DIAMOND DRILL HOLE
 - 4 Hole number-prefix 888
 - 45° Angle of dip
 - 300' Length of hole
 - Vertically Projected to Surface

SCALE
1:2400

MINERAL TECHNOLOGICAL SURVEY
ACQUISITION FILES
OFFICE
SEP 14 1988
RECEIVED

CHESBAR RESOURCES INC.
BLACK PROJECT
DIAMOND DRILL HOLE LOCATION
PLAN
(D.D.H. PROGRAM JAN 20 - MAR 13/ 1988)
DATE: March 17, 1988 BY: M.J. Perkins SCALE: 1:2400

