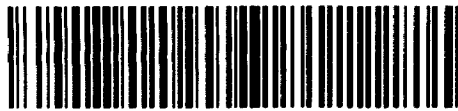


DIAMOND DRILLING



41P12SW0134 16 YEO

010

TOWNSHIP: YEO

REPORT No.: 16

WORK PERFORMED BY: KIDD CREEK MINES LTD.

<u>CLAIM No.</u>	<u>HOLE No.</u>	<u>FOOTAGE</u>	<u>DATE</u>	<u>NOTE</u>
P. 758638	YEO-34-2	826'	SEPT/83	(1)
	YEO-34-4	1050'	JUNE/84	(1)
	YEO-34-5	1030'	JUNE/84	(1)
		<u>2906'</u>		

NOTES: 1) #53-85

FROM - TO	DESCRIPTION	SAMPLE No.	FROM-TO	SAMPLE LENGTH	ASSAYS				AVERAGES AND REMARKS	
					Cu	Zn	Au	Ag		
0	5.49	CASING								
5.49	10.06	MASSIVE MAFIC VOLCANIC								
		- dark green, fine grained, moderately carbonated								
		- feldspar clots								
		- < 1% disseminated pyrrhotite, trace chalcopyrite								
10.06	16.29	FELSIC TUFF								
		- medium grey, granular, biotitic								
		- weakly foliated at 50°								
		- broken core 12.0 - 15.5								
		- a few pyrrhotite filled fractures								
		- upper and lower contacts sharp at 50°								
16.29	29.64	MASSIVE MAFIC VOLCANIC								
		- massive, dark green, feldspar clots								
		- finely biotitic								
		- 21.05 - 8 cm quartz vein with pyrrhotite	AA-28026	226	231	0.5m	170	20	3	24
		- 23.27 - 23.50 foliated quartz-carbonate-chlorite zone with 15% pyrrhotite	AA-28027	231	236	0.5m	396	17	3	1.4
		- silicified and increasingly biotitic toward lower contact	AA-28028	236	241	0.5m	120	17	3	1.0
<p>LOGGED BY: <u>D. Mullen</u> DATE: <u>September, 1983</u> PROPERTY <u>Yeo 34</u> HOLE No. <u>Y-34-2</u> PAGE No. <u>1</u></p>										

FROM - TO	DESCRIPTION	SAMPLE No.	FROM-TO	SAMPLE LENGTH	ASSAYS				AVERAGES AND REMARKS	
					Cu	Zn	Au	Ag		
29.64	30.64									
	FELSIC TUFF									
	- as above, biotitic									
	- upper contact at 60°									
	- lower contact at 25°									
	- < 1% pyrrhotite stringers									
30.64	42.20									
	MASSIVE MAFIC VOLCANICS	AA-28029	310	320	10m	112	50	3	1.6	
	- dark green, fine grained, silicified at upper contact									
	- foliated at 30°									
	31.4 - 31.6 5% pyrrhotite, trace chalcopyrite									
	33.25 - 20 cm quartz vein									
42.20	44.55									
	DIABASE DYKE									
	- brownish black, relatively fine grained									
	- a few waxy green feldspar clots									
	- upper contact at 40°, lower contact broken									
44.55	47.60									
	MASSIVE MAFIC VOLCANIC									
	- dark green as above									
47.60	48.30									
	DIABASE DYKE									
	- as above, upper contact at 15°, lower contact at 20°									

LOGGED BY: D. Mullen DATE: September, 1983

PROPERTY Yeo 34

HOLE No. Y-34-2 PAGE No. 2

FROM - TO	DESCRIPTION	SAMPLE No.	FROM - TO	SAMPLE LENGTH	ASSAYS				AVERAGES AND REMARKS
					Cu	Zn	Au	Ag	
48.30	67.40								
67.40	67.80								
67.80	68.25								
68.25	68.84								
68.84	147.30								

FROM - TO	DESCRIPTION	SAMPLE No.	FROM - TO	SAMPLE LENGTH	ASSAYS				AVERAGES AND REMARKS
					Cu	Zn	Ag	Ag	
68.84-147.30	Con't								
	- stringers of pyrrhotite becoming more numerous downhole paralleling foliation increasing in intensity	AA-28030	860 875	1.5m	260	190	27	2.8	
	87.50 - 88.0 carbonate-rich intensely foliated chloritic zone, at 45°	AA-28031	875 890	1.5m	230	177	27	3.0	
	* POSSIBLE FAULT*								
	- some biotite, quartz pyrrhotite, chalcopyrite								
	88 - 89 several irregular quartz veins and pods								
	89.0 - 89.6 strongly foliated at 45°, carbonated, chloritic	AA-28032	890 905	1.5m	36	65	2	1.0	
	* POSSIBLE FAULT*								
	after 89.6 pillowed amygdaloidal mafic, some bleaching								
	93.40 irregular quartz pod rimmed by orange feldspathic material or hematite (?)								
	93.90 narrow cubic pyrite seam								
	96.15 - 96.70 irregular quartz-carbonate vein with pink feldspathic material with 10% pyrite minor chalcopyrite	AA-28033	960 970	1.0m	330	55	2	3.4	
	106.10 - 106.50 biotite-rich zone with 10% pyrrhotite	AA-28034	1055 1070	1.5m	220	84	10	3.2	
	107 - 108 actinolite-chlorite zone with 1% pyrrhotite, trace pyrite. chalcopyrite, foliated at 55°	AA-28035	1070 1085	1.5m	220	86	5	3.2	
	107.3 10 cm quartz vein	AA-28036	1085 1100	1.5m	210	94	5	3.0	
	109.17 - 109.70, 110.4 - 110.8 grey strongly carbonated foliated zones, trace disseminated pyrite, foliated at 50°	AA-28037	1100 1115	1.5m	174	77	4	2.6	
	- mafic volcanic becoming granular, medium grained								

LOGGED BY: D. Mullen DATE: September, 1983

PROPERTY Yeo 34

HOLE No. Y-34-2 PAGE No. 4

FROM - TO	DESCRIPTION	SAMPLE No.	FROM - TO	SAMPLE LENGTH	ASSAYS				AVERAGES AND REMARKS
					Cu	Zn	Au	Ag	
68.84	147.30	Con't							
	- grey-black in colour downhole	AA-28038	111.5	113.0	1.5m	190	89	2	4.2
	111.9 - 112.2, 114.0 - 114.5 actinolite zones								
	113.3 - 113.6 carbonated in situ brecciated zones possible contact or	AA-28039	113.0	114.3	1.5m	320	150	5	2.0
	"alteration front" at 115.80 after 115.8 dark green, fine grained volcanic	AA-28040	114.5	116.0	1.5m	206	68	16	1.0
	- amygdaloidal								
	- a few wisps pyrrhotite with trace chalcopyrite	AA-28063	123.0	124.5	1.5m	280	(140)	16	0.6
	- 126.8 - 129 bleached amygdaloidal light green mafic with minor pyrrhotite,								
	trace chalcopyrite								
	132.15 - 132.28 narrow feldspar porphyry dyke	AA-28041	132.5	134.0	1.5m	920	55	15	1.6
	133.38 carbonate vein with pyrrhotite, minor chalcopyrite bordered by								
	narrow actinolite zone								
	* 133.95 - 135.06 silicified zone with 5% pyrrhotite 1/2% chalcopyrite as	AA-28042	134.0	135.5	1.5m	(260)	96	(59)	3.8
	stringers, disseminations	AA-28043	135.5	137.0	1.5m	920	51	18	2.0
	138.63 5 cm quartz vein with 5% chalcopyrite	AA-28044	137.0	138.5	1.5m	290	43	10	1.2
	* 140.75 - 141.60 silicified zone with 15% pyrrhotite and 1% chalcopyrite	AA-28045	138.5	140.0	1.5m	620	42	14	1.6
	142.85 - 143.15 silicified zone with 1/2% chalcopyrite	AA-28046	140.0	141.5	1.5m	1030	53	19	2.0
	146.10 stringers chalcopyrite	AA-28047	141.5	143.0	1.5m	610	42	15	1.6
		AA-28048	143.0	144.5	1.5m	750	38	12	1.6
147.30	148.07	FELSIC TUFF							
	- medium grey, granular, feldspar phyric	AA-28049	144.5	146.0	1.5m	730	47	15	1.8
	- mafic inclusions	AA-28050	146.0	147.5	1.5m	1150	53	33	1.6

LOGGED BY: D. Mullen DATE: September, 1983

PROPERTY Yeo 34

HOLE No. Y-34-2 PAGE No. 5

FROM - TO	DESCRIPTION	SAMPLE No.	FROM-TO		SAMPLE LENGTH	ASSAYS				AVERAGES AND REMARKS	
						Cu	Zn	Ac	Ag		
147.30	148.07	Con't	AA-28051	1475	1490	1.5m	1070	49	27	2.2	
		- banded at 45°									
148.07	149.30	MAFIC VOLCANIC (?)									
		- dark green, fine grained, massive									
		- trace chalcopyrite									
149.30	149.78	FELSIC TUFF	AA-28052	1490	1520	1.0m	890	42	40	2.2	
		- as above but with 1% pyrrhotite, 1% chalcopyrite									
149.78	151.30	FELDSPAR PORPHYRY DYKE	AA-28053	1500	1515	1.5m	316	42	2	1.0	
		- grey, fine grained, upper contact at 45°, lower contact at 20°									
		- feldspar crystals to 2 mm									
151.30	156.00	MAFIC VOLCANIC									
		- initially massive, dark green becoming silicified downhole									
		- trace pyrite									
156.00	171.04	FELSIC TUFF									
		- medium to dark grey granular to fine grained, biotitic									
		- banded at 60°, minor disseminated pyrite, chalcopyrite									
		- a few chlorite seams									

LOGGED BY: D. Mullen DATE: September, 1983

PROPERTY Yeo 34

HOLE No. Y-34-2

PAGE No. 6

FROM - TO	DESCRIPTION	SAMPLE No.	FROM - TO	SAMPLE LENGTH	ASSAYS				AVERAGES AND REMARKS
					Cu	Zn	As	Ag	
156.00	171.04								
	Con't								
	- 166.30 - 167.20 bleached zones								
	170.25 - 170.55 chloritic zone. possible mafic tuff (?) foliated at 55 - 60°								
171.04	171.59								
	LAMPROPHYRE DYKE								
	- dark grey, carbonate-biotite rich, chloritic contacts								
171.59	179.34								
	FELSIC TUFF								
	- medium grey, fine grained, foliated at 50°								
	- a few coarser feldspar phyrlic sections								
179.34	186.25								
	MASSIVE MAFIC VOLCANIC								
	- dark green, fine grained, chloritic, feldspar clots to 5 mm								
	- a few pyrrhotite seams, wisps (< 1%)								
	- upper contact sharp at 70°, lower contact broken								
186.25	187.16								
	FELSIC TUFF								
	- as above								
187.16	187.68								
	MAFIC DYKE (?)								
	- fine grained, dark green								
	- tiny blue quartz eyes								

LOGGED BY: D. Mullen DATE: September, 1983

PROPERTY Yoe 34

HOLE No. T-34-2 PAGE No. 7

FROM - TO	DESCRIPTION	SAMPLE No.	FROM - TO	SAMPLE LENGTH	ASSAYS				AVERAGES AND REMARKS
					Cu	Zn	Al	Ag	
187.68	189.98								
	FELSIC TUFF								
	- both coarse and fine grained sections								
189.98	190.60								
	DIABASE DYKE								
	- as before, upper contact at 30°, lower contact broken with quartz vein								
190.60	198.90								
	FELSIC TUFF	AA-28054	1912	1920	10m	96	124	2	16
	- medium grey, fine to medium grained	AA-28055	1920	1930	10m	250	82	4	1.2
	- weakly foliated at 50°, weakly biotitic	AA-28056	1930	1940	10m	1152	157	52	5.8
	191.6 - 191.8, 193.1 - 194.3 chloritic zones with 1% disseminated								
	pyrrhotite, possible foliated mafic tuff, dykes???								
	- lower contact sharp at 50°								
198.90	201.71								
	MASSIVE MAFIC VOLCANIC								
	- dark green, fine grained, weakly foliated at 60°								
	- minor wisps of pyrrhotite								
201.71	205.02								
	DIABASE DYKE								
	- as before, chilled contacts at 30° and 50°								
205.02	206.51								
	MASSIVE MAFIC VOLCANIC								
	- as before but with minor pervasive carbonate alteration								

LOGGED BY: D. Mullen DATE: September, 1983

PROPERTY Yeo 34

HOLE No. Y-34-2

PAGE No. 8

FROM - TO	DESCRIPTION	SAMPLE No.	FROM - TO	SAMPLE LENGTH	ASSAYS				AVERAGES AND REMARKS
					Cu	Zn	Au	Ag	
206.51	207.68								
	FELSIC TUFF								
	- grey, granular								
	- 5 cm chlorite seam at 206.77								
	upper contact at 50° lower contact at 35°								
207.68	213.05								
	MASSIVE MAFIC VOLCANICS								
	- as above, some bleaching near carbonate vein								
213.05	216.20								
	DIABASE DYKE								
	- as before, upper contact with quartz vein, lower contact at 35°								
216.20	218.74								
	MASSIVE MAFIC VOLCANIC								
	- as above, extensive carbonate alteration								
	- 1% disseminated, stringer pyrrhotite								
218.74	220.40								
	MAFIC DYKE (?)								
	- fine grained, dark green, uniform, biotitic								
	- upper contact sharp at 70° - possible alteration "front"								
	- vague "gradational" lower contact								
220.40	225.84								
	MAFIC VOLCANIC								
	- as above, moderately carbonated								

LOGGED BY: D. Mullen DATE: September, 1983

PROPERTY Yoe 34

HOLE No. Y-34-2 PAGE No. 9

FROM - TO	DESCRIPTION	SAMPLE No.	FROM - TO		SAMPLE LENGTH	ASSAYS				AVERAGES AND REMARKS	
						Cu	Zn	Au	Ag		
220.40	225.84	Con't	AA-28057	2245	2255	1.0m	170	49	2	0.6	
		- gradational lower contact									
225.84	227.54	FELSIC TUFF									
		- dark grey, biotitic, uniform	AA-28058	2255	2265	1.0m	116	53	10	1.0	
		weakly foliated at 50°									
		* 225.85 - 226.30 10% pyrrhotite, trace sphalerite, chalcopyrite									
		226.5 - 227.3 chlorite zone	AA-28059	2265	2275	1.0m	142	45	2	0.6	
		- lower contact sharp at 65°									
227.54	251.76	MASSIVE MAFIC VOLCANIC									
		- dark green, fine grained, occasional feldspar clots									
		- a few stringers of pyrrhotite with trace chalcopyrite									
		- 234.2 - 234.5 quartz-carbonate vein with pyrrhotite, minor chalcopyrite									
		- possibly pillowed - vague amygdular shapes									
		- 244.5 - 244.8 felsic tuff interbed (possible clast, inclusion?)									
251.76		END OF HOLE									
		<i>D. Mullen</i>									

FROM - TO		DESCRIPTION	SAMPLE No.	FROM - TO	SAMPLE LENGTH	ASSAYS				AVERAGES AND REMARKS
0	11.65	CASING								
11.65	19.90	LEUCOCRATIC AMPHIBOLITE (MIGMATITE) - light grey-green, medium to coarse grained - with feldspars, amphiboles and occasional blue quartz eyes - splotchy mottled appearance - very weakly carbonated - cut by narrow quartz veins with traces of pyrite								
19.90	22.0	TRANSITION ZONE - fine grained, brownish green in colour - strongly chlorite, carbonated - cut by carbonate veinlets - foliated at 55° to core axis								
22.0	30.6	MASSIVE MAFIC VOLCANIC - fine-medium grained, weakly feldspar phyric - dark green, trace pyrrhotite - sharp lower contact at 10° to core axis.								
30.6	32.6	GABBROIC AMPHIBOLITE (MIGMATITE) - dark green with a few lighter feldspar rich zones, medium grained								
LOGGED BY: <u>Dave Mullen</u> DATE: <u>June 1984</u> PROPERTY <u>YEO-34</u> HOLE No. <u>YEO 34-4</u> PAGE No. <u>1</u>										

FROM - TO		DESCRIPTION	SAMPLE No.	FROM - TO	SAMPLE LENGTH	ASSAYS				AVERAGES AND REMARKS
						Cu	Zn	Au	Ag	
32.6	98.56	MASSIVE TO PILLOWED MAFIC VOLCANIC								
		- fine to medium grained, dark green								
		- cut by several 10 cm - 40 cm wide quartz and quartzo-feldspathic veins								
		- rare hairline fractures with pyrrhotite, pyrite, trace chalcopyrite								
		45-50 numerous carbonate veinlets in section, chloritic 47-49 several zones								
		of actinolite crystal to 5mm								
		- rare feldspar clots to 4 mm after 53								
		- increase in sulphides after 65 m, both in quartz veins and wispy patches								
		- up to 5% pyrrhotite, pyrite, trace chalcopyrite over 1-10 cm								
		70 - 74 m carbonate-actinolite zone								
		75.5 m - quartz vein running subparallel to core axis for 30 cm								
		78.5 m - rare blue quartz eye, also first sign of silicification								
		83.7 - 85.4 m - zone of silicification adjacent to large stringer of	AA-20109	84.0	85.5	1.5	750	28	11	1.4
		pyrrhotite, chalcopyrite at 84.8								
		- pillows now evident								
		90.6 m - patches of silicification with very chloritic zone								
		93.3 m - 20% pyrrhotite, 2% chalcopyrite over 10 cm								
		- silicification most intense near pillow selvages								
		97.7 m - 40% pyrrhotite over 5 cm in pillow selvage								

LOGGED BY: Dave Mullen DATE: June 1984

PROPERTY YE0-34

HOLE No. YE0-34-4 PAGE No. 2

FROM - TO	DESCRIPTION	SAMPLE No.	FROM - TO	SAMPLE LENGTH	ASSAYS				AVERAGES AND REMARKS
98.56	99.10								
	DIABASE DYKE								
	- dark brownish grey, fine grained, weakly magnetic								
	- with waxy green feldspar clots to 5 mm								
	- contacts sharp at 30° to the core axis								
99.10	144.4								
	MASSIVE - PILLOWED MAFIC VOLCANIC								
	- dark green, fine grained								
	- with some silicified patches foliated at 30° to core axis								
	- minor disseminated pyrrhotite								
	- cut by numerous quartz and quartz-carbonate veins								
	- some veins appear foliated perpendicular to its contacts suggesting that some veins predate the foliation								
	- odd clot of feldspar to 1 cm								
	- silicification decreasing by 115								
	- mafic quite massive								
	127.4 - 127.7 m - brownish alteration zone, biotitic (?), some silicification								
	133.7 m - 5 cm pyrrhotite stringer with chalcopyrite								
	137.1 - 137.6 m - carbonated actinolite zone								
144.4	145.06								
	FELSIC UNIT (TUFF ?)								
	- fine grained, medium grey, massive								

LOGGED BY: Dave Mullen DATE: June 1984

PROPERTY YEO 34

HOLE No. YEO-34-4 PAGE No. 3

FROM - TO	DESCRIPTION	SAMPLE No.	FROM - TO	SAMPLE LENGTH	ASSAYS				AVERAGES AND REMARKS
					Cu	Zn	Au	Ag	
	- moderately biotitic, some actinolite crystals								
	- trace pyrrhotite, chalcopyrite								
	- contacts at 30° to core axis								
145.06	228.15	MASSIVE MAFIC VOLCANIC							
	- fine grained, dark green, occasional feldspar clots								
	- weak to moderate foliation at 35° to core axis								
	- biotite adjacent to carbonate veinlets								
	- trace pyrrhotite, pyrite								
	150 - 152 m - strongly carbonated actinolite zone with brownish biotitic (?) zones								
	- also patches of chalcopyrite, pyrrhotite with quartz vein								
	156.2, 157.3 m - narrow quartz veins with orange-pink feldspathic material along margins								
	- possibly pillowed after 160 m								
	166.2 - 171.1 m - strongly foliated zone with carbonate and actinolite, brownish-purple tinge to unit	AA28110	169.3	170.8	1.5 m	550	122	537	1.2 Au checked
	- foliated at 10° - 30° to core axis								
	- possible fault zone (?)								
	170.0 m - 10 cm patch of pyrrhotite with chalcopyrite								
	- crosscutting carbonate veins contain fragments of altered wallrock.								
<p>LOGGED BY: <u>Dave Mullen</u> DATE: <u>June 1984</u> PROPERTY <u>YE0-34</u> HOLE No. <u>YE0-34-4</u> PAGE No. <u>4</u></p>									

FROM - TO	DESCRIPTION	SAMPLE No.	FROM - TO	SAMPLE LENGTH	ASSAYS				AVERAGES AND REMARKS
					Cu	Zn	Au	Ag	
	- massive mafic unit contains feldspar clots to 1 cm								
	- 173.5 - 174.0 m - carbonated actinolite zone								
	- 181.5 m - 15 cm quartz-carbonate vein, trace pyrrhotite, chalcopyrite								
	- 182.6 m - 2 cm seam of pyrrhotite								
	- 186.4 m - 1 cm wide diabase dyke running subparallel to core axis								
	- 195.8 m - 15% wispy pyrrhotite over 10 cm								
	- 202 - 203 m - weakly silicified zone								
	- 210.1 - 210.2 m - narrow diabase dyke with contacts at 80° to core axis								
	- 213.48 - 213.54 m - diabase dyke, moderate increase in pyrrhotite after								
	215 m								
	- 224 - 226 m - strongly carbonated zone trace actinolite, biotite pyrrhotite	AA28111	224.5 - 226.5	1.9m	118	37	2	0.2	
228.15 - 228.90	FELSIC TUFF								
	- fine grained, medium to dark grey	AA28112	228.15 - 228.90	0.75m	310	46	4	1.2	
	- banded (foliated) at 35° to core axis 10 % seams and wisps of pyrrhotite, trace chalcopyrite, pyrite.								
	- sharp contacts								
228.90 - 249.30	PILLOWED MAFIC VOLCANIC								
	medium green, fine grained	AA28113	228.90 - 230.4	1.5m	174	42	2	0.2	

LOGGED BY: Dave Mullen DATE: June 1984

PROPERTY YEO- 34

HOLE No. YEO-34-4 PAGE No. 5

FROM - TO	DESCRIPTION	SAMPLE No.	FROM - TO		SAMPLE LENGTH	ASSAYS				AVERAGES AND REMARKS
						Cu	Zn	Au	Ag	
	- very silicified especially near selvages									
	- amygdules are chloritic, a few wisps of pyrrhotite	AA28114	2304	2319	1.5	230	50	4	0.4	
	- 231.7 - 231.9 m - 15% pyrrhotite, 1/2% chalcopyrite in silicified zone									
	- thin biotitic seams and disseminations	AA28115	2319	2334	1.5	220	42	2	0.2	
249.30	263.70	DIABASE DYKE								
	- dark brownish grey, granular									
	- with waxy green feldspar clots to 1 cm									
	- upper contact sharp at 35° to core axis									
	- lower contact broken									
263.70	267.77	ALTERED MAFIC VOLCANIC								
	- dark grey-green, foliated at 55° to core axis									
	- silicified in part, very biotitic									
	- with fine disseminations chalcopyrite, pyrrhotite									
	- with inclusions of feldspar perphyritic felsic									
267.77	271.86	FELSIC TUFF								
	- medium to dark grey, banded (foliated) at 50° to core axis									
	- biotitic, weakly chloritic, silicified									
	1% disseminated pyrrhotite, chalcopyrite									
LOGGED BY: <u>Dave Mullen</u> DATE: <u>June 1984</u> PROPERTY <u>YE0-34</u> HOLE No <u>YE0-34-4</u> PAGE No. <u>6</u>										

FROM - TO	DESCRIPTION	SAMPLE No.	FROM - TO	SAMPLE LENGTH	ASSAYS				AVERAGES AND REMS
					Cu	Zn	Au	Ag	
271.36 274.63	MASSIVE MAFIC UNIT (DYKE?) - dark green, fine grained, feldspar clots - weakly foliated at 50° to core axis 1% disseminated pyrrhotite, trace chalcopyrite								
274.63 275.46	FELSIC TUFF - medium grey, initially fine grained over 10 cm, silicified with 2% pyrrhotite, trace chalcopyrite - becoming granular, feldspar - phyrlic downhole - possibly crystal tuffs with fine grained chloritic ashy beds - "grading" indicates downhole tops	AA28116	27463 27546	0.83m	730	58	4	1.6	
275.46 275.78	MASSIVE MAFIC UNIT - as above								
275.78 275.92	FELSIC TUFF - dark grey, feldspar phyrlic, granular - contacts at 25° - 30° to core axis								
275.92 282.50	PILLOWED MAFIC VOLCANIC - medium to dark green, fine grained								

LOGGED BY: Dave Mullen DATE: June 1984

PROPERTY Yeo-34

HOLE No. YE0-34-4 PAGE No. 7

FROM - TO	DESCRIPTION	SAMPLE No.	FROM - TO	SAMPLE LENGTH	ASSAYS				AVERAGES AND REMARKS
	- intense silicification with minor pyrrhotite, chalcopyrite, pyrite around amygdules especially 278.95								
	- inclusion of felsic tuff at 279.7, 280.9								
282.50 282.90	FELSIC TUFF								
	- granular, feldspar phytic, possible inclusion								
282.90 285.86	MASSIVE MAFIC VOLCANIC								
	- as before, felsic tuff inclusion at 284.7								
285.86 286.24	DIABASE DYKE								
	- dark brownish grey, weakly magnetic, waxy green feldspar clots								
286.24 289.34	MASSIVE MAFIC VOLCANIC								
	- as above								
	- cut by 1 cm wide diabase dyke at 287.1								
289.34 291.50	FELSIC TUFF								
	- medium to dark grey, fine to medium grained								
	- possible crystal tuff								
	- sericitized, weakly chloritic								
	- 290.4 - 290.7 m - strongly foliated biotite zone at 55° to core axis								

LOGGED BY: Dave Mullen DATE: June 1984

PROPERTY YEO-34

HOLE No. YEO-34-4 PAGE No. 8

FROM - TO	DESCRIPTION	SAMPLE No.	FROM - TO	SAMPLE LENGTH	ASSAYS			AVERAGES AND REMARKS
291.50	320.0							
	PILLOWED MAFIC VOLCANIC							
	- fine grained, dark green							
	- some silicification near selvages							
	- trace pyrrhotite, chalcopyrite							
	- gradational into granular weakly carbonated biotitic zone at 294.90 (incipient migmatization)							
	297.5 - 298.3 m - fine grained dark green feldspar phyric zone with tiny blue quartz eyes							
	301.1 - 303.2 m - coarser grained, biotite, amphibole zone							
	- still pillowed.							
	After 303.2m - finer grained, amygdular pillows							
	- some silicification, rare blue quartz eye							
	- thin wisps of pyrrhotite							
	317.6 - 320 m - carbonated actinotitic zone, some biotite.							
320.0	END OF HOLE							
	<i>DJ Mullen</i>							

LOGGED BY: Dave Mullen DATE: June 1984

PROPERTY YE0-34

HOLE No. YE0-34-4 PAGE No. 9

KIDD CREEK MINES LTD.

EXPLORATION DIVISION

DRILL HOLE RECORD

HOLE NO. YE0-34-5..... PROPERTY YE0 34..... PROJECT NO. 56..... CONTRACTOR Bradley.. START June 15/84.....

FINISH June 21/84.....

COORDINATES Grid Location: Latitude 2 + 70N..... UTM: Lat. N 5265417.. Surveyed: Lat. Mine Grid: Lat.
 Departure L 18 + 00 E. Dep. E 424787... Dep.
 Elevation Elev.

COLLAR ATTITUDE Azimuth 180° Dip -65° LENGTH 314.0m.. CORE SIZE BQ.....

INCLINATION TESTS

Acid Tests

Compass Tests

Depth	Dip

Depth	Dip

Depth	Dip	Azimuth	True Azimuth
61m	-67°	17° SW	188°
154m	-67.5°	20° SW	191°
298m	-67.5°	28° SW	199°

REMARKS

Logged by Dave Mullen.....

Date June 22, 1984.....

Property YE0 34.....

Hole No. YE0-34-5.....

FROM - TO	DESCRIPTION	SAMPLE No.	FROM-TO	SAMPLE LENGTH	ASSAYS				AVERAGES AND REMARKS	
					Cu	Zn	Au	Ag		
0	0.8									
0.8	139.1									
	MASSIVE MAFIC VOLCANIC									
	- dark green, fine-medium grained									
	- trace disseminated pyrrhotite, pyrite									
	- rare tiny blue quartz eye									
	- cut by narrow quartz veins									
	- occasional clot of feldspar									
	- 9.2 - 9.6 m sericitized quartz-carbonate vein									
	cut by quartzo-feldspathic veins at 18.0 - 18.6, 18.95,									
	19.2 - 19.4 20.6 - 21.0									
	- 23.4, 29 vuggy core									
	- some quartz veins have minor pyrrhotite with chalcopyrite									
	- 41.9 - lighter green bleached zone with black tourmaline crystals adjacent									
	to carbonate vein									
	- 51-58 several quartz veins in section									
	- 58-65 massive granular zone									
	67.4 quartz-carbonate vein with pyrrhotite, trace chalcopyrite									
	- wisps, veinlets of pyrrhotite, chalcopyrite at 71.6, 76.9, 77.9, 78.2,									
	78.6									
	100-103 2% wisps of pyrrhotite, chalcopyrite, weak silicification	AA28117	1000	1015	1.5m	420	29	2	0.2	
	carbonated actinolitic zone at 118.7-120, 124-128, 129.5-130, 135.5-137.	AA28118	1015	1030	1.5m	440	19	3	0.4	
LOGGED BY: <u>Dave Mullen</u> DATE: <u>June 1984</u>					PROPERTY	<u>YEO 34</u>	HOLE No.	<u>YEO-34-5</u>	PAGE No.	<u>1</u>

FROM - TO	DESCRIPTION	SAMPLE No.	FROM - TO	SAMPLE LENGTH	ASSAYS			AVERAGES AND REMARKS
139.1	150.4							
	FELSIC TUFF							
	- medium grey, granular, biotitic							
	- feldspar-phyric, occasional blue quartz eye							
	- cut by several quartz veins							
	- moderately foliated at 30° to core axis							
	- weakly chloritic, carbonated							
	- minor pyrrhotite, trace chalcopyrite							
	- with several 30 cm wide greenish biotitic zones							
150.4	158.5							
	MASSIVE MAFIC UNIT (DYKE?)							
	- dark grey fine grained							
	- with feldspar clots							
	- strongly carbonated and actinolitic over 1 m at upper contact and over 10 cm at lower contact							
158.5	159.0							
	FELSIC TUFF							
	- medium grey, fine grained							
	- foliated at 60° to core axis							
159.0	159.8							
	MAFIC UNIT							
	- strongly carbonated, biotitic, actinolitic							
	- trace pyrrhotite							
LOGGED BY: <u>Dave Mullen</u> DATE: <u>June 1984</u> PROPERTY <u>YEO-34</u> HOLE No. <u>YEO-34-5</u> PAGE No. <u>2</u>								

FROM - TO		DESCRIPTION	SAMPLE No.	FROM - TO	SAMPLE LENGTH	ASSAYS			AVERAGES AND REMARKS
159.8	161.3	FELSIC TUFF							
		- as before, with feldspar phenocrysts							
161.3	207.2	MASSIVE MAFIC VOLCANIC							
		- dark green, fine grained, some feldspar clots							
		- carbonated and actinolitic at upper contact and from 163.8 - 164.5,							
		189-190.1							
		- trace disseminated pyrrhotite, pyrite							
207.2	212.5	LAMPROPHYRE DYKE (?)							
		- strongly carbonated, biotitic, vague contacts							
		- could be altered mafic flow							
		- foliated at 40° to core axis							
212.5	260.4	MASSIVE MAFIC VOLCANIC							
		- dark green, fine grained, feldspar-phyric at upper contact							
		- pyrrhotite patch at 219.5							
		- 241-245 coarser granular zone with blue quartz eyes (incipient migmatization)							
		- 245.6, 248.5, patches of pyrrhotite, trace chalcopyrite							
		- possibly pillowed after 251							
LOGGED BY: <u>Dave Mullen</u> DATE: <u>June 1984</u> PROPERTY <u>YE0 34</u> HOLE No. <u>YE0-34-5</u> PAGE No. <u>3</u>									

FROM - TO	DESCRIPTION	SAMPLE No.	FROM-TO	SAMPLE LENGTH	ASSAYS				AVERAGES AND REMARKS
					Cu	Zn	Au	Ag	
	- minor bleaching near selvages								
	- 256.1 - 256.3 quartz veining with pyrrhotite, chalcopyrite								
	- 258.5 - 260.4 foliated bleached biotitic zone with 2-5% wisps, disseminations, pyrrhotite	AA28119	258.4 260.4	1.5m	530	410	(260)	2.0	
260.4	266.1	FELSIC TUFF							
	- light grey, very biotitic	AA28120	260.4 261.9	1.5m	340	590	185	1.8	
	- weak to moderate foliation at 45° to core axis	AA28121	261.9 263.4	1.5m	670	*	27	2.4	* 0.348 % Zn
	- 10% pyrrhotite over 10 cm at upper contact								
	- overall 1-2% disseminations and stringers pyrrhotite and fracture controlled chalcopyrite	AA28122	263.4 264.9	1.5m	(2200)	*	83	5.2	* 0.764 % Zn
	- trace sphalerite	AA28123	264.9 266.1	1.2m	(2100)	*	56	(5.8)	* 0.392 % Zn
266.1	311.7	PILLOWED MAFIC VOLCANIC							
	- dark green, fine grained, feldspar clots	AA28124	266.1 267.6	1.5m	208	106	244	1.0	
	- stringers of pyrrhotite, trace chalcopyrite with some quartz veining at 271.1, 272.7, 280.9, 281.4, 282.0, 284.7, 285.1, 285.4, 286.6, 293.8, 296.0, 305.0								
	- biotitic near 290								
	- some silicification near selvages								
	307.5 - 308 coarser grained granular zone								
LOGGED BY: <u>Dave Mullen</u> DATE: <u>June 1984</u> PROPERTY: <u>YEO-34</u> HOLE No. <u>YEO-34-5</u> PAGE No. <u>4</u>									



052/85



41P125W0134 16 YEO

The Min

900

Name and Postal Address of Recorded Holder
KIDD CREEK MINES LTD. I-1848

P.O. Box 1140, 571 Moneta Avenue, Timmins, Ontario P4N 7H9

Summary of Work Performance and Distribution of Credits

Total Work Days Cr. claimed 3119	Mining Claim			Mining Claim			Mining Claim		
	Prefix	Number	Work Days Cr.	Prefix	Number	Work Days Cr.	Prefix	Number	Work Days Cr.
for Performance of the following work. (Check one only) <input type="checkbox"/> Manual Work <input type="checkbox"/> Shaft Sinking Drifting or other Lateral Work. <input type="checkbox"/> Compressed Air, other Power driven or mechanical equip. <input type="checkbox"/> Power Stripping <input checked="" type="checkbox"/> Diamond or other Core drilling <input type="checkbox"/> Land Survey	P	634424	120	P	725080	180	P	743290	80
		634425	60		725081	120		749998	100
		641536	120		725084	180		749999	100
		641537	60		725085	120		750000	100
		724700	180		725441	120		758628	180
		725007	180		743281	120		758629	120
		725008	120		743288	79		758632	120
		725012	180		743289	80		758638	180
All the work was performed on Mining Claim(s): P-758638								758639	120

Required Information eg: type of equipment, Names, Addresses, etc. (See Table Below)

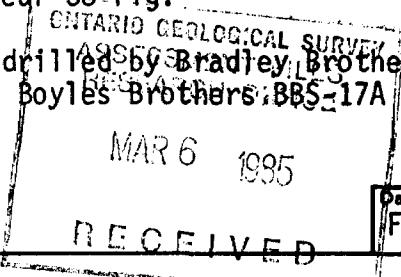
Hole No.	Azm	Dip	Depth	Core Size
Yeo 34-2	180°	-55°	826'	BQ 1 1/2"
Yeo 34-4	180°	-65°	1050'	
Yeo 34-5	180°	-65°	1030'	
		Total	2906'	

RECORDED
 FEB 14 1985
 Receipt No.

In addition, 213 excess days credit from hole Yeo-34-1 are being claimed at this time. (See report dated April 17, 1984). Total credits claimed: 3119 days.

Hole Yeo-34-2 was drilled by Dominik Drilling, 420 King Street, Porcupine, from September 1 to 6, 1983 using a Longyear 38 rig.

Holes Yeo-34-4 and 5 were drilled by Bradley Brothers, Highway 101 West, Timmins from June 8 to 21, 1984 using a Boyles Brothers BBS-17A unitized rig.



Date of Report: Feb. 13, 1985
 Recorded Holder or Agent (Signature): *[Signature]*

Certification Verifying Report of Work

I hereby certify that I have a personal and intimate knowledge of the facts set forth in the Report of Work annexed hereto, having performed the work or witnessed same during and/or after its completion and the annexed report is true.

Name and Postal Address of Person Certifying
David Mullen, P.O. Box 1140, 571 Moneta Avenue, Timmins, Ontario P4N 7H9.

Date Certified: Feb. 13, 1985
 Certified by (Signature): *[Signature]*

Table of Information/Attachments Required by the Mining Recorder

Type of Work	Specific Information per type	Other Information (Common to 2 or more types)	Attachments
Manual Work		Names and addresses of men who performed manual work/operated equipment, together with dates and hours of employment.	Work Sketch: these are required to show the location and extent of work in relation to the nearest claim post.
Shaft Sinking, Drifting or other Lateral Work			
Compressed air, other power driven or mechanical equip.	Type of equipment	Names and addresses of owner or operator together with dates when drilling/stripping done.	Work Sketch (as above) in duplicate
Power Stripping	Type of equipment and amount expended. Note: Proof of actual cost must be submitted within 30 days of recording.		
Diamond or other core drilling	Signed core log showing: footage, diameter of core, number and angles of holes.		
Land Survey	Name and address of Ontario land surveyor.	NII	NII

Kidd Creek Mines Ltd.

Box 1140
571 Moneta Avenue,
Timmins, Ontario P4N 7H9
(705) 267-1188

Exploration Division

February 13, 1985

Mr. Bruce Hanley
Mining Recorder
Ministry of Natural Resources
60 Wilson Avenue
Timmins, Ontario

Dear Mr. Hanley:

Re: Yeo Township - Diamond Drilling

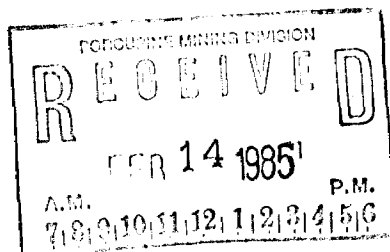
Enclosed you will find the Mining Act, Report of Work form with drill logs and work sketch showing the plan locations of drill holes Yeo-34-2, 4 and 5 drilled in Yeo Township. A total of 3119 days of work credits are being applied; 2906 from this drilling and 213 days of extra credits from hole Yeo-34-1 filed in 1984.

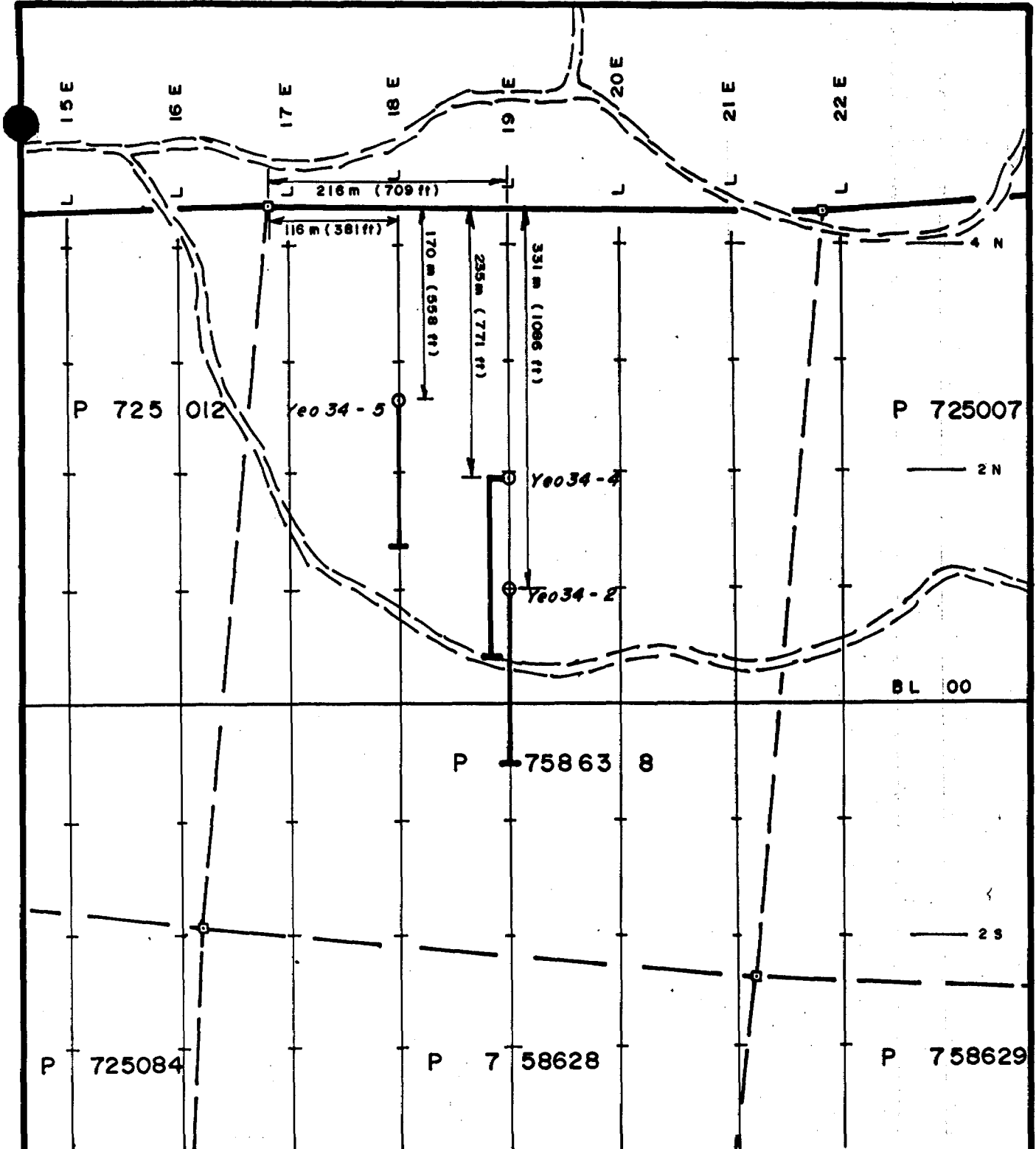
Yours truly



DAVE MULLEN
Geologist
Kidd Creek Mines Ltd. (Expl.)

DM/pp
Encls.





HOLE NO	LOCATION	AZM.	DIP	DEPTH
Yeo 34-2	L 19 E 1+00 N	180°	-55°	251.76 m or (826 ft)
Yeo 34-4	L 19 E 1+96 N	180°	-65°	320 m or (1050 ft)
Yeo 34-5	L 18 E 2+70 N	180°	-65°	314 m or (1030 ft)

Del Mullen

KIDD CREEK MINES LTD.
Exploration Division Timmins, ONTARIO

YEO 34
YEO Twp.

**LOCATION
MAP**

SCALE: 1 : 5,000	Date: Mullen
Drawn: DEL	Project N°: 56
	Date: 13/02/85

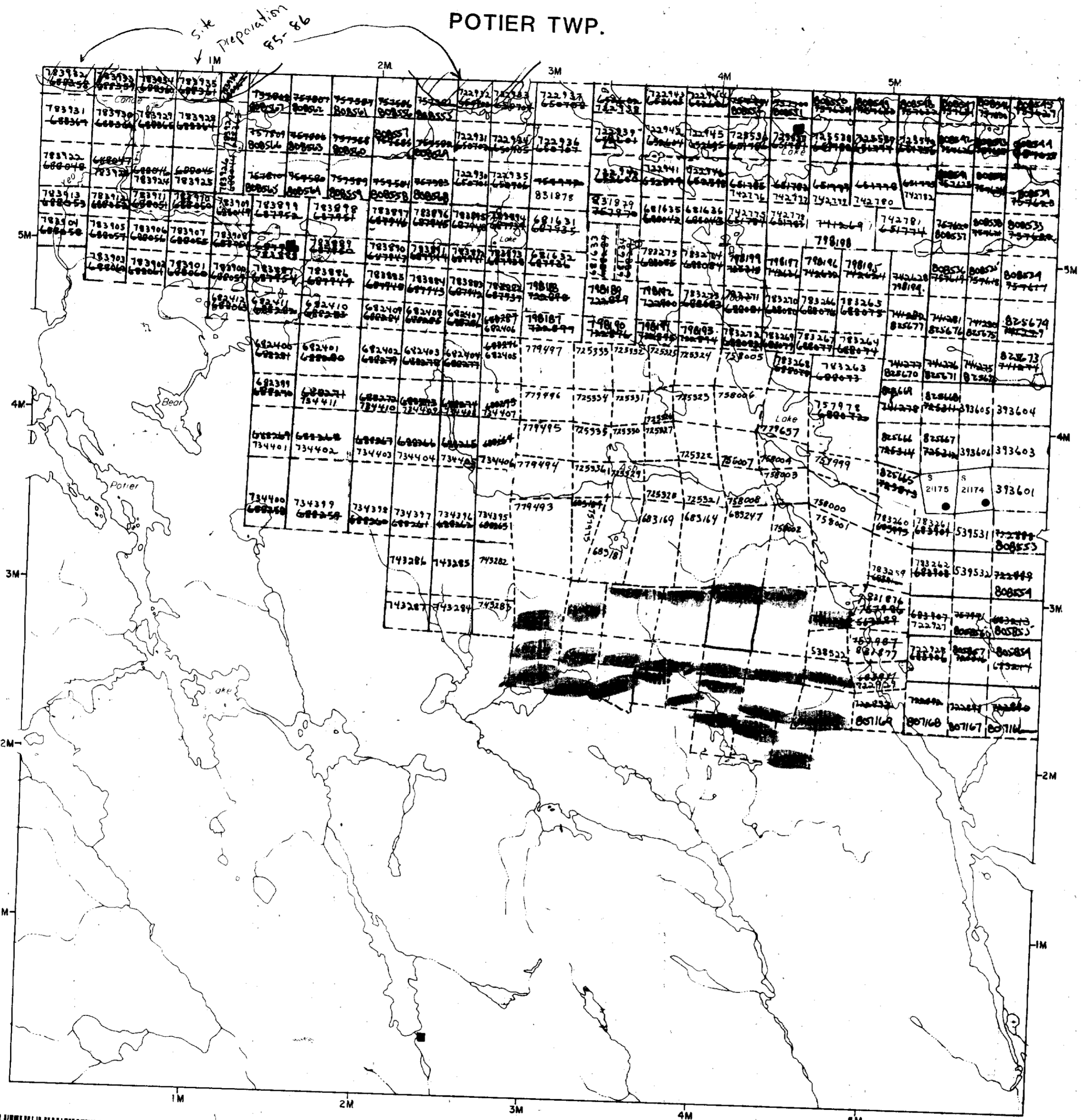
185-2

YEO 1MB

185-81

WN FROM DISPOSITION
 RIGHTS ONLY
 E RIGHTS ONLY
 AND SURFACE RIGHTS

Date Disposition File



LEGEND

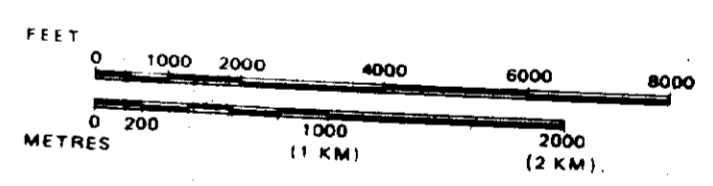
- HIGHWAY AND ROUTE No.
- OTHER ROADS
- TRAILS
- SURVEYED LINES:
 - TOWNSHIPS, BASE LINES, ETC.
 - LOTS, MINING CLAIMS, PARCELS, ETC.
- UNSURVEYED LINES:
 - LOT LINES
 - PARCEL BOUNDARY
 - MINING CLAIMS ETC.
- RAILWAY AND RIGHT OF WAY
- UTILITY LINES
- NON-PERENNIAL STREAM
- FLOODING OR FLOODING RIGHTS
- SUBDIVISION OR COMPOSITE PLAN RESERVATIONS
- ORIGINAL SHORELINE
- MARSH OR MUSKEG
- MINES
- TRAVERSE MONUMENT

DISPOSITION OF CROWN LANDS

TYPE OF DOCUMENT	SYMBOL
PATENT, SURFACE & MINING RIGHTS	●
" SURFACE RIGHTS ONLY	○
" MINING RIGHTS ONLY	○
LEASE, SURFACE & MINING RIGHTS	■
" SURFACE RIGHTS ONLY	□
" MINING RIGHTS ONLY	□
LICENCE OF OCCUPATION	▲
ORDER-IN-COUNCIL	OC
RESERVATION	○
CANCELLED	○
SAND & GRAVEL	○

NOTE: MINING RIGHTS IN PARCELS PATENTED PRIOR TO MAY 6, 1913, VESTED IN ORIGINAL PATENTEE BY THE PUBLIC LANDS ACT, R.S.O. 1970, CHAP. 380, SEC. 63, SUBSEC. 1.

SCALE: 1 INCH = 40 CHAINS



TOWNSHIP

YEO

M.N.R. ADMINISTRATIVE DISTRICT

GOGAMA

MINING DIVISION

PORCUPINE

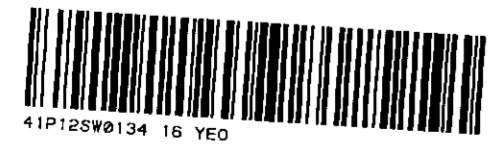
LAND TITLES / REGISTRY DIVISION

SUDBURY

Ministry of Land Resources Management Branch

Date November 18, 1983
 OCTOBER, 1983

Number
G-2481



41P125W0134 16 YEO

SMUTS TWP.