



41P12SW0135 15 YEO

010

Diamond Drilling

Township Yeo

Report NO 15

Work performed by: Kidd Creek Mines Ltd.

Claim NO	Hole NO	Footage	Date	Note
P 758638	Y-34-1	573	Aug/83	(1)

Notes: (1) #170-84

KIDD CREEK MINES LTD.

EXPLORATION DIVISION

DRILL HOLE RECORD

HOLE NO. Yeo 34-1 PROPERTY Yeo 34 PROJECT NO. 56 CONTRACTOR Dominik START August 24, 1983

FINISH August 29, 1983

COORDINATES Grid Location: Latitude 1+25N UTM: Lat. Surveyed: Lat. Mine Grid: Lat.

Departure L 18 E Dep. Dep. Dep.

Elevation Elev.

COLLAR ATTITUDE Azimuth 180° Dip -45° LENGTH 174.65 m CORE SIZE BQ
(Grid South)

INCLINATION TESTS

Acid Tests

Compass Tests

Depth	Dip
60.96	- 43°
123.44	- 41°
174.65	- 38°

Depth	Dip

Depth	Dip	Azimuth	True Azimuth
130.45	40.5°	181.9°	172.9°

REMARKS

Grid south may really be magnetic south rather than true south. (171°AZM)

Logged by Dave Mullen

Date August 1983

Property Yeo 34

Hole No. Yeo-34-1

FROM - TO		DESCRIPTION	SAMPLE No.	FROM - TO	SAMPLE LENGTH	ASSAYS				AVERAGES AND REMARKS
0	4.50	CASING								
4.5	16.45	MASSIVE MAFIC VOLCANIC (Possibly pillowed)								
		- fine grained, dark green, uniform, moderately chloritic								
		- scattered feldspar clots from 2-10 mm								
		- cut by occasional carbonate veins and stringers								
		- disseminated pyrrhotite with traces chalcopyrite (< 1%)								
		- some angular zones, with 2 mm amygdules cored with pyrite								
		- pyrite also coats some chlorite slips								
16.45	17.80	LAMPROPHYRE DYKE								
		- brownish grey, strongly carbonated, biotite								
		- foliated at 40° - 45° to core axis								
		- trace pyrite								
		- upper contact sharp at 55°, lower contact broken								
17.80	20.20	MASSIVE MAFIC VOLCANIC								
		- similar to above but with no feldspar clots								
		- pyrrhotite clot with chalcopyrite at 18.04								
20.20	20.65	LAMPROPHYRE DYKE								
		- fairly massive, not foliated								

LOGGED BY: D. Mullen DATE: August, 1983

PROPERTY Yeo 34

HOLE No. Y-34-1 PAGE No. 1

FROM - TO	DESCRIPTION	SAMPLE No.	FROM - TO	SAMPLE LENGTH	ASSAYS				AVERAGES AND REMARKS
20.20	20.65	Con't							
		- biotite phenocrysts to 2 mm							
		- upper contact irregular and running subparallel to core axis							
		- lower contact sharp at 50°							
20.65	23.70	MASSIVE MAFIC VOLCANIC							
		- dark green, fine grained							
		- weak to moderate pervasive carbonate alteration							
		- cut by quartz-carbonate veins with minor pyrrhotite and chalcopyrite							
23.70	28.23	LAMPROPHYRE DYKE							
		- as above							
		- initially massive, becoming foliated at 30° after 24.7 m							
		- carbonate veining parallels foliation							
		- upper contact sharp at 45°							
		- lower contact sharp at 35°							
28.23	46.15	PILLOWED-MASSIVE MAFIC VOLCANIC							
		- medium to dark green, fine grained							
		- pink feldspathic material at upper contact and also associated with 15 cm silicified patch with 2% pyrite at 28.95							
		- silicified patches with vague banding at 45°							

LOGGED BY: D. Mullen DATE: August, 1983

PROPERTY Yeo 34

HOLE No. Y-34-1 PAGE No. 2

FROM - TO	DESCRIPTION	SAMPLE No.	FROM - TO	SAMPLE LENGTH	ASSAYS				AVERAGES AND REMARKS
28.23 - 46.15	Con't - weakly chloritic, hairline fractures with chalcopyrite - trace disseminated pyrite - biotite disseminated throughout - amygdules mark pillow selvages - some silicification around amygdules								
46.15 - 48.53	LAMPROPHYRE DYKE - as before - Both lower and upper contacts sharp at 30°								
48.53 - 67.62	MASSIVE MAFIC VOLCANIC - initially dark green but becoming lighter green at 56 m - some silicified patches - Biotite at upper contact with minor chalcopyrite 51.0 - 51.1 10% pyrrhotite with trace chalcopyrite - some amygdules - possibly pillowed 56.15 - 56.20 15% pyrrhotite with 1% chalcopyrite, 1% pyrite and trace sphalerite in seam 56.6 - 57.3 numerous pyrrhotite stringers with hairline fractures of chalcopyrite, pyrite, trace sphalerite (10% sulphides) - pyrite cube in carbonate (?) vug at 59.95								
LOGGED BY: <u>D. Mullen</u> DATE: <u>August, 1983</u> PROPERTY <u>Yeo 34</u> HOLE No. <u>Y-34-1</u> PAGE No. <u>3</u>									

FROM - TO	DESCRIPTION	SAMPLE No.	FROM-TO	SAMPLE LENGTH	ASSAYS				AVERAGES AND REMARKS
48.53	67.62	Con't							
		- core darker green near 60 m, more chloritic but still with approximately							
		1% disseminated pyrrhotite							
		61.0 stringer chalcopyrite with minor pyrite, pyrrhotite running subparallel							
		to core axis							
		- some silicified patches							
		61.5 - 61.8 actinolite zone with 5% pyrrhotite							
		61.90 - 62.15 quartz veining with po, py and cpy							
		- silicified near lower contact							
67.62	69.75	FELSIC TUFF							
		- dark grey, very fine grained, almost cherty							
		- bedding (?) banding at 35°							
		- contorted banding at 68.5 m							
		1 % disseminated pyrrhotite with trace py, cpy following foliation							
		from 68.6 - 70.4							
		- coarser grained 69 - 69.3							
		- lower contact somewhat gradational, chloritic							
69.75	112.70	MASSIVE MAFIC VOLCANIC							
		- dark green, fine grained, chloritic, massive							
		- occasional feldspar clot to 5 mm							

LOGGED BY: D. Mullen DATE: August, 1983

PROPERTY Yeo 34

HOLE No. Y-34-1 PAGE No. 4

FROM - TO	DESCRIPTION	SAMPLE No.	FROM - TO	SAMPLE LENGTH	ASSAYS				AVERAGES AND REMARKS
69.75	112.70	Con't							
		72.8 - 73.5 zone of silicification							
		1% disseminations occasional stringers of pyrrhotite, trace pyrite							
		chalcopyritic throughout							
		- often coating chloritic slips							
		- cut by odd quartz vein							
		- weak pervasive carbonate alteration after 76 m							
		- 80.77 - 81.12, 81.41 - 81.79 quartz-carbonate veined zones with 2%							
		pyrrhotite, trace chalcopyrite							
		- foliation adjacent to veined zones at 50°							
		- carbonate veinlets coated with biotite							
		- 86.57 - 87.04 large quartz veins, with carbonate margins							
		93.3 - 96.0, 99.0 - 99.15 silicified patches							
		- possible felsic tuff (or strongly silicified) 100.0 - 100.6							
		- after 101.8 back to dark green mafic with 1% disseminated pyrrhotite							
		throughout							
		102.5 quartz vein with pyrrhotite, trace chalcopyrite							
		- silicified in part after 110							
		- 2 mm blue quartz eyes noted at 110.28							
		- becoming foliated at 75°							

LOGGED BY: D. Mullen

DATE: August, 1983

PROPERTY Yeo 34

HOLE No. Y-34-1 PAGE No. 5

FROM - TO	DESCRIPTION	SAMPLE No.	FROM - TO	SAMPLE LENGTH	ASSAYS				AVERAGES AND REMARKS
112.70	118.77	FELSIC TUFF							
		- medium to dark grey, weakly foliated at 55°							
		- upper contact cut by large quartz vein, carbonate							
		- minor pyrrhotite wisps parallel to foliation							
		- biotite scattered throughout							
		- a few tiny feldspar (albite?) crystals							
		- foliation much stronger around 118.5 with quartz veining, and biotite, chlorite at 40°, 3% wisps of pyrrhotite, some actinolite (?)							
118.77	120.70	MAFIC TUFF (?)							
		- dark green, chloritic							
		- 2% disseminations, stringers pyrrhotite, trace chalcopyrite							
		- some silicification							
		- lower contact appears gradation with actinolite crystals near transition point							
120.70	127.89	FELSIC TUFF							
		- medium grey, granular in part, biotitic							
		- weak foliation at 50°							
		- 1% pyrrhotite as hairline fractures, trace chalcopyrite							
		- becoming darker green (chloritic) near 127 with increase in pyrrhotite (5%) and pervasive carbonate							
LOGGED BY: <u>D. Mullen</u> DATE: <u>August 1983</u> PROPERTY <u>Yeo 34</u> HOLE No. <u>Y-34-1</u> PAGE No. <u>6</u>									

FROM - TO	DESCRIPTION	SAMPLE No.	FROM-TO	SAMPLE LENGTH	ASSAYS			AVERAGES AND REMARKS
120.70	127.89	Con't						
		- also 123.6 - 123.9 chloritic zone						
127.89	134.80	MASSIVE MAFIC VOLCANIC (?)						
		- possible dyke						
		- dark green, fine grained, biotitic						
		- 3 - 10% feldspar phenocrysts to 5 mm						
		- 1% pyrrhotite, pyrite stringers						
		- lower contact sharp at 40°						
134.80	139.15	FELSIC TUFF						
		- medium grey, massive, granular						
		- biotitic, 1% disseminated pyrrhotite						
139.15	140.20	MAFIC DYKE (?)						
		- as above but foliated at 50°						
		- initial 30 cm strongly carbonated						
		- 2% stringer pyrrhotite						
140.20	147.23	FELSIC LAPILLI TUFF						
		- almost a tuffwacke						
		- granular, feldspar phenocrysts (metacrysts?) throughout						

LOGGED BY: D. Mullen DATE: August 1983

PROPERTY Yeo 34

HOLE No. Y-34-1 PAGE No. 7

FROM - TO	DESCRIPTION	SAMPLE No.	FROM - TO	SAMPLE LENGTH	ASSAYS			AVERAGES AND REMARKS
140.20	147.33							
	Con't							
	- biotitic, 1% disseminated pyrrhotite throughout except as noted below							
	- silicified, some chloritic seams							
	141 - 142 5% hairline seams of pyrrhotite, trace chalcopyrite foliated at 60°							
	- matrix quite chloritic, occasional blue quartz eye							
	145.45 - 146.05 80% feldspar phenocrysts							
	chalcopyrite, chlorite and black tourmaline							
	- last 30 cm well laminated ash tuff at 60°							
147.33	153.12							
	MASSIVE MAFIC VOLCANIC							
	- dark green, fine grained, non-porphyritic, biotitic							
	- weakly carbonated, minor bleaching							
	< 1% disseminated pyrrhotite							
153.12	153.52							
	LAMPROPHYRE DYKE							
	- as before							
153.52	160.03							
	MASSIVE MAFIC VOLCANIC							
	- as above, non-porphyritic							
	< 1% pyrrhotite, trace chalcopyrite							

LOGGED BY: D. Mullen

DATE: August 1983

PROPERTY Yeo 34

HOLE No. Y-34-1

PAGE No. 8

FROM - TO	DESCRIPTION	SAMPLE No.	FROM - TO	SAMPLE LENGTH	ASSAYS				AVERAGES AND REMARKS
160.03	161.65	FELSIC TUFF							
		- upper contact possibly faulted at 55°							
		- cut by numerous carbonate veins							
		- matrix quite actinolitic							
		- a few centimetre wide pyrrhotite veins							
		- 5% pyrrhotite throughout. trace chalcopyrite							
161.65	166.58	MASSIVE - PILLOWED MAFIC VOLCANIC							
		- dark green, chloritic, amygdaloidal							
		- weakly carbonated near selvages							
		- some minor bleaching							
		- amygdules filled with chlorite and/or pyrrhotite							
166.58	167.35	FELDSPAR PORPHYRY DYKE							
		- massive, dark grey							
		- 10% euhedral to subhedral 2 mm feldspar phenocrysts							
167.35	173.90	PILLOWED MAFIC VOLCANIC							
		- as above, rare blue quartz eye							
		- occasional feldspar phenocryst							
		172.76 - 173.50 feldspar-rich zone, dyke?							
		- some actinolite							

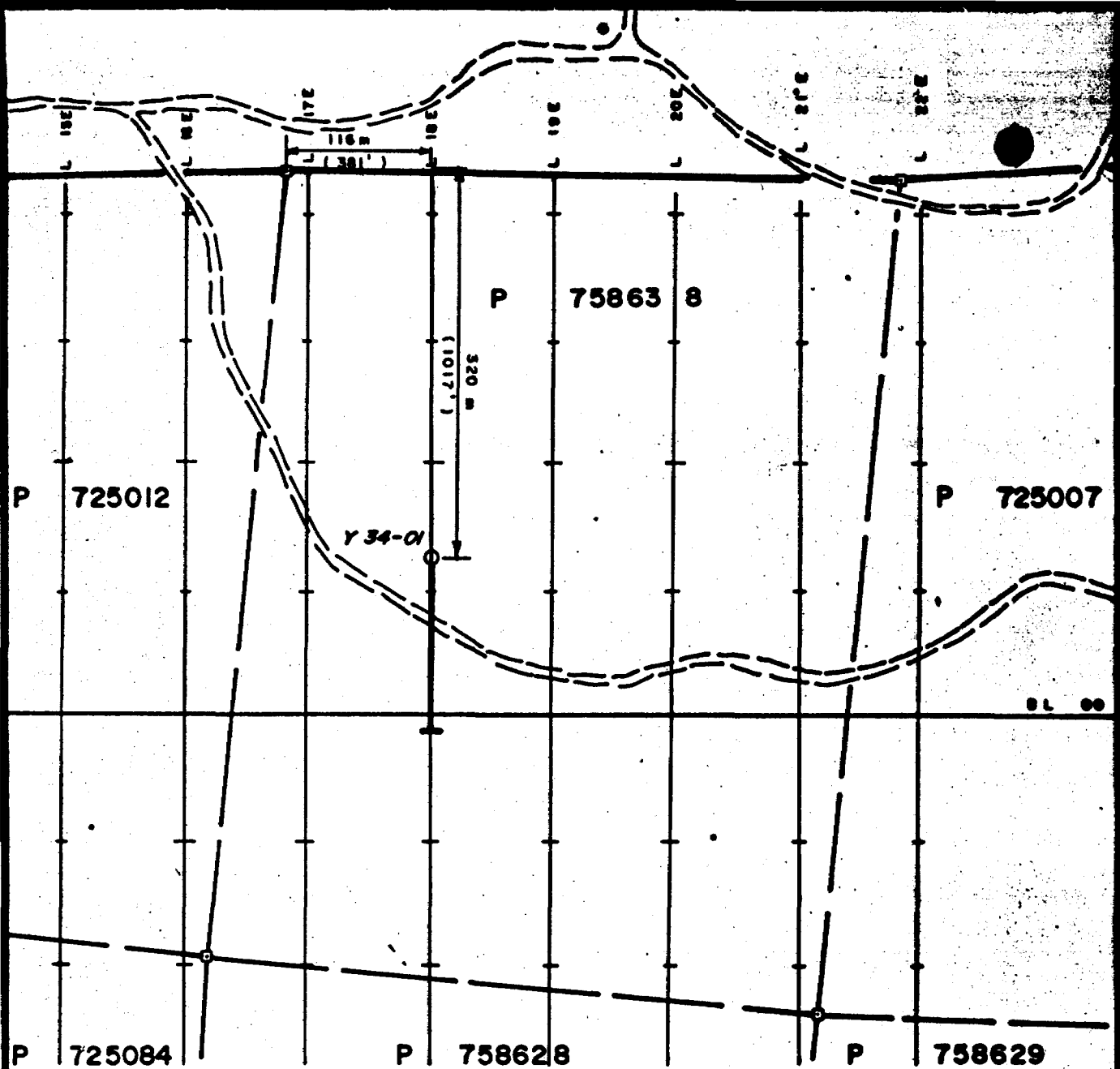
LOGGED BY: D. Mullen

DATE: August 1983

PROPERTY Yeo 34

HOLE No. Y-34-1

PAGE No. 9

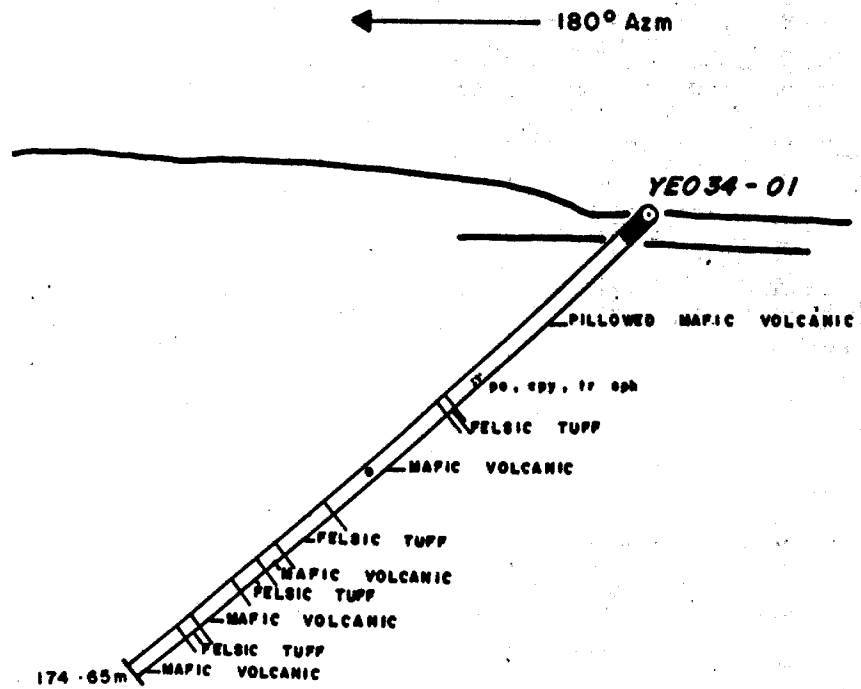


HOLE NO	LOCATION	AZM.	DIP	DEPTH
Y 34-01	L 18 E 1 + 25 N	180°	-45°	174.65m (573')

D. M. M.

KIDD CREEK MINES LTD.	
Exploration Division	Timmins, ONTARIO
YEO 34 YEO Twp.	
LOCATION MAP	
SCALE: 1 : 5000	Date: Muller
Drawn: DEL	Project N°: 56
Date: 09/04/84	

Claim P 758638



KIDD CREEK MINES LTD.	
Exploration Division	Timmins, ONTARIO
YEO 34 YEO Twp.	
SECTION FOR YEO 34 - 01	
(LOOKING WEST)	
SCALE: 1 : 2,000	Date: Mullen
Drawn: DEL	Project N°: 56
	Date: 17 / 04 / 84

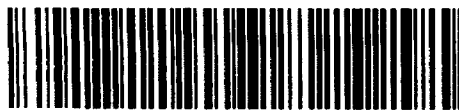
D. Mullen



Ministry of
Natural
Resources

Report
of Work

*Yeo
Twp*



41P12SW0135 15 YEO

a separate form for each
orded (see table below)
se form no. 1382 "Report
physical, Geochemical and

Ontario
W8406-170

900

Name and Postal Address of Recorded Holder
KIDD CREEK MINES LTD.

ence No.

571 Moneta Avenue, P.O. Box 1140, Timmins, Ontario P4N 7H9

Summary of Work Performance and Distribution of Credits

Total Work Days Cr. claimed 360	Mining Claim		Work Days Cr.	Mining Claim		Work Days Cr.	Mining Claim		Work Days Cr.
	Prefix	Number		Prefix	Number		Prefix	Number	
for Performance of the following work, (Check one only) <input type="checkbox"/> Manual Work <input type="checkbox"/> Shaft Sinking Drifting or other Lateral Work. <input type="checkbox"/> Compressed Air, other Power driven or mechanical equip. <input type="checkbox"/> Power Stripping <input checked="" type="checkbox"/> Diamond or other Core drilling <input type="checkbox"/> Land Survey	P	724700	20	P	725441	20	P	758638	20
		725007	20		743281	20		758639	20
		725008	20		743288	20			
		725012	20		743289	20			
		725080	20		743290	20			
		725081	20		758628	20			
		725084	20		758629	20			
		725085	20		758632	20			

All the work was performed on Mining Claim(s): *758638*

Required Information eg: type of equipment, Names, Addresses, etc. (See Table Below)

Hole No.	AZM	DIP	DEPTH	CORE SIZE
Y-34-1	180°	-45°	573'	BQ (1 7/16")

RECORDED
APR 17 1984
573 days work

Drilling was performed on claim P-758638 by Dominik Drilling 420 King Street, Porcupine Ontario from August 24 to 29, 1983 using a longyear 38 rig. Only 360 day credits are being applied at this time, leaving an excess of 213 days to be claimed at a later date.

*573 days Available
360 days Used*

213 days Remaining

PORCUPINE MINING DIVISION
RECEIVED
APR 17 1984
A.M. P.M.
7 8 9 10 11 12 1 2 3 4 5 6

Date of Report: April 17, 1984
Recorded Holder or Agent (Signature): *[Signature]*

Certification Verifying Report of Work

I hereby certify that I have a personal and intimate knowledge of the facts set forth in the Report of Work annexed hereto, having performed the work or witnessed same during and/or after its completion and the annexed report is true.

Name and Postal Address of Person Certifying
David Victor Mullen, 571 Moneta Avenue, P.O. Box 1140, Timmins, Ontario

P4N 7H9

Date Certified
April 17, 1984

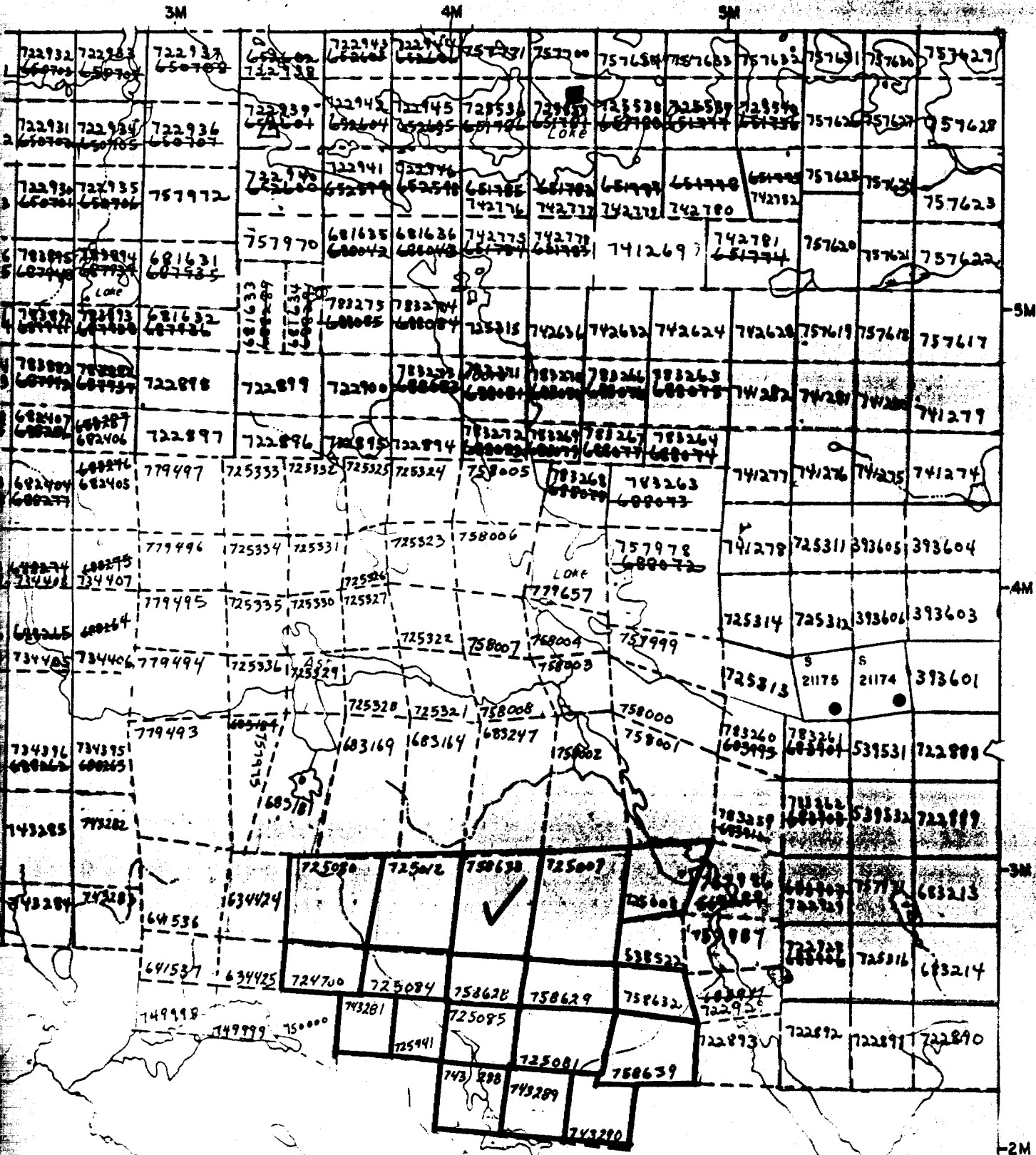
Certified by (Signature)
[Signature]

Table of Information/Attachments Required by the Mining Recorder

Type of Work	Specific Information per type	Other Information (Common to 2 of more types)	Attachments
Manual Work	Nil	Names and addresses of men who performed manual work/operated equipment, together with dates and hours of employment.	Work Sketch: these are required to show the location and extent of work in relation to the nearest claim post.
Shaft Sinking, Drifting or other Lateral Work			
Compressed air, other power driven or mechanical equip.	Type of equipment	Names and addresses of owner or operator together with dates when drilling/stripping done.	Work Sketch (as above) in duplicate
Power Stripping	Type of equipment and amount expended. Note: Proof of actual cost must be submitted within 30 days of recording.		
Diamond or other core drilling	Signed core log showing: footage, diameter of core, number and angles of holes.		
Land Survey	Name and address of Ontario land surveyer.	Nil	Nil

G-2481
4eo Twp.

POTIER TWP.



CHESTER TWP.

2M