

DIAMOND DRILLING

TOWNSHIP: CHESTER

REPORT NO: 42

WORK PERFORMED FOR: Chesbar Resources

RECORDED HOLDER: Same as Above [xx]
: Other []

<u>Claim No.</u>	<u>Hole No.</u>	<u>Footage</u>	<u>Date</u>	<u>Note</u>
P 549017	S-87-65	266'	Nov/87	(1)
	S-87-66	176'	Nov/87	(1)
	S-87-67	246'	Nov/87	(1)
	S-87-68	267'	Nov/87	(1)

Notes: (1) #W8806-087, filed in Aug/88.

DIAMOND DRILL RECORD

NAME OF PROPERTY MURGOLD
 HOLE NO. S-87-65 LENGTH 266'
 LOCATION 39+50W 19+70S
 LATITUDE _____ DEPARTURE _____
 ELEVATION _____ AZIMUTH 180° DIP -45°
 STARTED Nov. 16/87 FINISHED Nov. 17/87

FOOTAGE	DIP	AZMUTH	FOOTAGE	DIP	AZMUTH
261'	-44°	186.5°			

HOLE NO. S-87-65 SHEET NO. 1

REMARKS Vero Zone

LOGGED BY D. O'Suilleabhain

FOOTAGE		DESCRIPTION	SAMPLE			Cu A S Au Ag			
FROM	TO		NO.	% SULPHIDES	FROM	%	%	OZ/TON	OZ/TON
0	6	CASING							
6	35.3	DIORITE f-mg, medium green in color to dark green, massive porphyritic 5-10% qtz, upper 1.5' consists of granodiorite injection, contact gradational 15-17.8 fg brittle fractured zone with qtz healing, fractures @ 40-45° CA			15	18	3		.002
35.3	90.8	GRANODIORITE/MONZONITE? mg, massive porphyritic, flesh in color, 20-30% qtz, 10% mafics (bi, chl) dioritic xenolith at 36.8-37.8 47.5-48.6 weakly altered zone upgraded to bi, cg blue qtz eyes, sericitized 57-58.5 greyish glassy qtz vein, epidotised, minor cp sub-parallel to CA 60-61.2 patchy, irregular, barren, bullish qtz carb vein 67.9-76.8 <u>SHEAR ZONE</u> fg dioritic/mafic unit, brittley deformed, brecciated, qtz healed structures, trace py qtz flooding with brecciation, minor hem shearing @ 45° CA			47.5	48.5	1		.002
					57	60	3		.002
					60	61.5	1.5		.002
					67.5	73	4.5		.002
					73	74.5	1.5		.002
					74.5	75.5	1		.002
					75.5	77	1.5		Tr
90.8	226	DIORITE/MIGMATITE as above at 6-35.3 upper contact sharp @ 45-50° CA 108.2-113.9 <u>SHEAR ZONE</u> fg brittley deformed shear zone numerous qtz healed structures diss py, cp shearing @ 55° CA *109.9-111 smokey grey qtz vein 1' wide, 2% diss euhedral py and native Cu, fg granular qtz 133.4-133.9 fg weakly foliated zone, trace diss cp shearing @ 50° CA 144 ¼" bullish qtz vein @ 30-35° CA			108	109	1		Tr
					109	110	1	56ppm	.02 Tr
					110	111	1	192	.02 .014
					111	112	1	204	Tr Tr
					112	114	2		Tr
					133	134	1		Tr
					143.5	144.5	1		Tr

SAMPLE
 ONTARIO GEOLOGICAL SURVEY
 ASSESSMENT FILES
 OFFICE
APR 22 1988
RECEIVED

LANSRIDGES - TORONTO - 366-1168

Donald O'Suilleabhain

DIAMOND DRILL RECORD

NAME OF PROPERTY MURGOLD

HOLE NO. S-87-65 SHEET NO. 2

FOOTAGE		DESCRIPTION	SAMPLE			ASSAYS					
FROM	TO		NO.	% SULPH IDES	FOOTAGE			%	%	OZ / TON	OZ TON
					FROM	TO	TOTAL				
		195.6-197.7 fg brittley deformed zone qtz healed structures bullish qtz flooding foliation @ 55-60° CA			195	198	3			Tr	
		210.4-210.5 1" bullish qtz vein @ 45° CA			210	211	1			Tr	
		236.1-237.2 fg weakly foliated mafic/dioritic xenolith with sheared contacts foliation @ 40° CA, contacts @ 40° CA			236	237.5	1.5			Tr	
		247.1-253.8 fg mafic unit with minor diss py			247	252	5			Tr	
					252	254	2			Tr	
	266	EOH									

LAMBSON - TORONTO - 366-1168

DIAMOND DRILL RECORD

NAME OF PROPERTY MURGOLD
 HOLE NO. S-87-66 LENGTH 176'
 LOCATION 41+50W 19+00S
 LATITUDE _____ DEPARTURE _____
 ELEVATION _____ AZIMUTH 180° DIP -45°
 STARTED Nov. 17/87 FINISHED Nov. 18/87

FOOTAGE	DIP	AZIMUTH	FOOTAGE	DIP	AZIMUTH
171'	-46°	184.5°			

HOLE NO. S-87-66 SHEET NO. 1

REMARKS Vero Zone

LOGGED BY D. O'Suilleabhain

FOOTAGE		DESCRIPTION	SAMPLE			ASSAYS			
FROM	TO		NO.	% SULPHIDES	ASSESSMENT FILES	%	%	OZ/TON	OZ/TON
0	41.3	DIORITE f-mg medium to dark green in color, massive porphyritic minor qtz, minor flow alignment of crystals 15.4-17.6 weakly foliated, fg zone with qtz healed structures, foliation @ 30-35° CA 17.8 1/3" qtz healed fracture, diss po, cp fracture @45° CA 21.8-23.4 highly siliceous fg zone with bullish barren qtz vein from 22.6-23.3 25.3-25.4 qtz carb flooded zone 34.2-34.4 weakly foliated qtz flooded zone fracture @80° CA							
			ONTARIO GEOLOGICAL SURVEY ASSESSMENT FILES APR 22 1988 RECEIVED						
41.3	76.1	GRANODIORITE f-mg light grey to flesh in color, 10% mafics, 20% qtz contains dioritic/mafic xenoliths, upper contact sharp @10° CA 54 bullish, barren 1" qtz vein @ 30° CA 62 sheared contact of mafic unit, minor py, contact @15° CA 75.9-76.1 altered zone with 1-2% diss py	15	17	2			Tr	
			18	21.5	3.5			Tr	
			21.5	22.5	1			Tr	
			22.5	23.5	1			.002	
			25	26	1			.008	
			34	35	1			Tr	
76.1	176	DIORITE as above at 0-41.3 81.8-85.3 fg mafic zenolith, medium green in color, sheared contacts with qtz flooding in lower contact shearing @60° CA 96.5-96.8 2 1/2" greyish barren glassy vein @ 25° CA 114.2-122.8 <u>SHEAR ZONE</u> fg brittley deformed zone qtz healed structures, becoming highly siliceous towards centre with qtz stringers containing po, py minor sph *119.8-120.3 highly siliceous qtz flooded zone, fg, qtz, 2% py, po, sph, asp shearing @ 40-45° CA 125.7-126.4 weakly sheared, mildly sheared zone qtz healed structures diss py, po, cp at base shearing @ 40° CA 139.8-140.3 siliceous epidotized zone 141.4-147.3 <u>SHEAR ZONE</u>	53.5	54.5	1			Tr	
			61.5	62.5	1			Tr	
			75.5	76.5	1			Tr	
			81.5	84.5	3			Tr	
			84.5	85.5	1			.002	
			96	97	1			Tr	
			114	118	4			Tr	
			118	119.5	1.5			.006	
			119.5	120.5	1		40	.014	.08
			120.5	121.5	1			.002	
			121.5	123	1.5			Tr	
			125.5	126.5	1			Tr	
			139.5	141	1.5			Tr	
			141	142.5	1.5			Tr	

LANGRIDDGES - TORONTO - 366-1188

Doreal O'Suilleabhain

DIAMOND DRILL RECORD

NAME OF PROPERTY MURGOLD

HOLE NO. S-87-66 SHEET NO. 2

FOOTAGE		DESCRIPTION	SAMPLE			ASSAYS					
FROM	TO		NO.	% SULPHIDES	FOOTAGE			%	%	OZ/TON	OZ TON
					FROM	TO	TOTAL				
		weakly sheared, fg, brittlely deformed zone, qtz healed structures shearing @ 55-60° CA			142.5	143.5	1		44	.032	Tr
		*142.7-144 highly siliceous zone with qtz flooding + veining			143.5	144.5	1		62	Tr	.06
		fg qtz, diss euhedral py, minor cp			144.5	145.5	1			Tr	
		173.6-174.3 siliceous zone with m-fg qtz			145.5	148	2.5			Tr	
					173	174.5	1.5			Tr	
	176	EOH									

LANGRISHES - TORONTO - 366-1168

DIAMOND DRILL RECORD

NAME OF PROPERTY MURGOLD
 HOLE NO. S-87-67 LENGTH 246'
 LOCATION 19+60S 37+75W
 LATITUDE _____ DEPARTURE _____
 ELEVATION _____ AZIMUTH 180° DIP -45°
 STARTED Nov 18/87 FINISHED Nov 19/87

FOOTAGE	DIP	AZMUTH	FOOTAGE	DIP	AZMUTH
241'	-44°	161.5°			
241'	-44°	189.5°			

HOLE NO. S-87-67 SHEET NO. 1

REMARKS Vero Zone

LOGGED BY D. O'Suilleabhain

FOOTAGE		DESCRIPTION	SAMPLE			ASSAYS					
FROM	TO		NO.	% SULPHIDES	FOOTAGE			%	%	OZ/TON	OZ/TON
					FROM	TO	TOTAL				
0	246	GABBRO DIORITE f-mg medium to dark green in color porphyritic massive unaltered minor qtz containing mafic xenoliths 29.4-35.2 zone of irregular qtz stringers hem 42.4-47 mafic xenolith fg biotitic fractured contacts transitional 72.4-74.1 siliceous f-mg injection towvraline phenocrysts upper contact sharp @ 25° CA lower contact sub-parallel to CA 112.5-113.1 trace diss py, cp along fractures 115.5-132.9 fg zone with weak foliation, trace diss sulphides in places, minor qtz healed structures, foliation @ 40° CA 129.5-130 5" bullish qtz/carb vein @ 65° CA 154.8-155.4 fg brittly deformed zone with qtz lined fractures @ 55° CA 163.5-165.3 vfg weakly biotitic zone 179.8 1" barren bullish qtz vein @ 30° CA 186.8-187.9 fg heavily fractured zone 206.8-209.5 fg heavily fractured zone, qtz healed structures, 3" qtz flooded zone at top fracturing @ 35° CA 224.1-229.7 fg weakly foliated zone heavily fractured qtz healed structures greyish qtz flooded zone at 227.4-227.5 foliations @ 40-45° CA 234.5-236.2 fg fractured zone with qtz healed structures fractures @ 40-45° CA									
					29.5	34.5	5			Tr	
					42.5	47	4.5			.008	
					72	74.5	2.5			Tr	
					112	113.5	1.5			Tr	
					115.5	119	3.5			.010	
					119	121.5	2.5			.018	
					121.5	124	2.5			.002	
					124	128	4			Tr	
					128	129.5	1.5			Tr	
					129.5	130.5	1			Tr	
					130.5	133	2.5			Tr	
					154.5	155.5	1			Tr	
					163.5	165.5	2			Tr	
					179.5	180.5	1			Tr	
					186.5	188	1.5			Tr	
					206.5	211	4.5			Tr	
					224	227	3			Tr	
					227	228	1			Tr	
					228	229	1			Tr	
					234.5	236.5	2			Tr	
246		EOH									

ONTARIO GEOLOGICAL SURVEY
 ASSESSMENT FILES
 OFFICE
 APR 22 1988
 RECEIVED

Douglas O'Suilleabhain

LANGRIDGES - TORONTO - 366-1168

DIAMOND DRILL RECORD

NAME OF PROPERTY MURGOLD
 HOLE NO. S-87-68 LENGTH 267'
 LOCATION 15+00S 42+85W
 LATITUDE _____ DEPARTURE _____
 ELEVATION _____ AZIMUTH 180° DIP -62°
 STARTED Nov. 19/87 FINISHED Nov. 20/87

FOOTAGE	DIP	AZIMUTH	FOOTAGE	DIP	AZIMUTH
271'	-60°	181°			

HOLE NO. S-87-68 SHEET NO. 1

REMARKS N of Vera Zone

LOGGED BY D. O'Suilleabhain

FOOTAGE		DESCRIPTION	SAMPLE			ASSAYS					
FROM	TO		NO.	% SULPHIDES	FOOTAGE		%	%	oz/TON	oz/TON	
					FROM	TO	TOTAL				
0	9	CASING									
9	267	GABBRO DIORITE m-fg, dark green in color, porphyritic massive, trace qtz, weak alignment of crystals, fg sheared zones fractured contains siliceous zones with up to 10% qtz 11.9-14.8 shearing @ 35-40° CA 16.3 irregular 1/4" qtz vein, barren epidotized, trace sulphides in wall rock vein @ 50° CA 19.7 euhedral py along carb healed fracture @ 40° CA 63.1-63.3 weakly sheared zone with trace diss euhedral py shearing @ 80° CA 72.4-72.8 weakly foliated biotitic unit, foliation @ 80° CA 75.5-100 SHEAR ZONE fg moderately sheared zone, qtz healed structures, trace diss euhedral py in places, upper 1.9' mildly siliceous, shearing @ 55-60° CA *87-87.2 qtz flooded zone greyish fg qtz 2-3% euhedral py, diss py in wall rock 92.1-92.8 highly siliceous zone with qtz veining fg "sugary" qtz 140.4-142.8 moderately sheared zone with qtz healed structures, fg bullish qtz, trace diss py shearing @ 30° CA 166.9-167.8 fg zone with qtz healed fractures 175.4-176.3 fg sheared mafic vol unit, qtz healed structures, foliation @ 40° CA 183.5-193.4 zone of vfg weakly foliated mafic volcanics fractured trace diss py throughout, light feen in color									
					9	13	4			Tr	
					13	17.5	4.5			Tr	
					26	27	1			Tr	
					49	50	1			Tr	
					62.5	63.5	1			Tr	
					72	73	1			Tr	
					75	77.5	2.5			Tr	
					77.5	82.5	5			Tr	
					82.5	85.5	3			Tr	
					85.5	86.5	1			Tr	
					86.5	87.5	1			.008	
					87.5	91	3.5			Tr	
					91	92	1			Tr	
					92	93	1			Tr	
					93	96	3			Tr	
					96	99	3			Tr	
					99	100.5	1.5			Tr	
					140	143	3			Tr	
					166.5	168	1.5			Tr	
					175.5	176.5	1			Tr	
					183.5	185.5	2			Tr	
					185.5	186.5	1			Tr	

ONTARIO GEOLOGICAL SURVEY
 ASSESSMENT FILES
 OFFICE
 APR 22 1988
 RECEIVED

LANCIBRIDGES - TORONTO - 366-1168

Donald O'Suilleabhain

DIAMOND DRILL RECORD

NAME OF PROPERTY MURGOLD

HOLE NO. S-87-68

SHEET NO. 2

FOOTAGE		DESCRIPTION	SAMPLE			ASSAYS					
FROM	TO		NO.	% SULPHIDES	FOOTAGE			%	%	OZ. TON	OZ. TON
					FROM	TO	TOTAL				
		biotitic horizon from 185.3-188 fractures @ 50° CA, upper contact sharp @ 30° CA lower contact broken			186.5	188.5	2			Tr	
		197.6-198.1 fg unit with biotitic phenocrysts			188.5	193.5	5			Tr	
		202.5-204.9 siliceous zone with fg qtz qtz flooded zone at 203.6-203.9 fg greyish qtz, diss py in qtz + wall rock			197.5	198.5	1			Tr	
		243-243.7 fg sheared zone with qtz healed structures @ 55° CA			201.5	203	1.5			Tr	
		247.5-248.8 ½" qtz/carb vein with minor diss py, cp vein sub-parallel to CA			203	204	1			.002	
		249.4 cp lined fracture @ 35° CA			204	205.5	1.5			Tr	
		257.1-257.4 greyish qtz stringers with diss py			242.5	244	1.5			Tr	
		258.4 ¼" barren cg qtz vein @ 35° CA			247	249	2			Tr	
267		EOH			249	250	1			.002	
					256.5	257.5	1			Tr	
					257.5	258.5	1			Tr	



DOCUMENT NO. W 8806-87 Mining



41P12SW8457 42 CHESTER

900

Name and Postal Address of Recorded Holder
Chesler Resources, 950-36 Toronto St. Toronto
Murgold Resources, 111 Richmond St. W. Toronto, Ont. M5H 2G4 (4073)

LICENCE HOLDERS T952 T4850

Summary of Work Performance and Distribution of Credits

Total Work Days Cr. claimed 955	Mining Claim			Mining Claim			Mining Claim		
	Prefix	Number	Work Days Cr.	Prefix	Number	Work Days Cr.	Prefix	Number	Work Days Cr.
for Performance of the following work. (Check one only)	P-	878889	200						
		878890	200						
		878891	200						
<input type="checkbox"/> Manual Work									
<input type="checkbox"/> Shaft Sinking Drifting or other Lateral Work.									
<input type="checkbox"/> Compressed Air, other Power driven or mechanical equip.									
<input type="checkbox"/> Power Stripping									
<input checked="" type="checkbox"/> Diamond or other Core drilling									
<input type="checkbox"/> Land Survey									

All the work was performed on Mining Claim(s): P-549017

Required Information eg: type of equipment, Names, Addresses, etc. (See Table Below)

Drill Contractor: Les Forages du Nord (Chibougamau) Inc.
C.P. 236
Val d'Or, Qc. (819) 738-5443
equipment: Longyear 38
core diameter: BQ
Work performed: Nov. 16 - Nov 20 / 1987

Bel #355

ONTARIO GEOLOGICAL SURVEY ASSESSMENT FILES OFFICE
APR 22 1988

RECORDED
MAR 04 1988

Date of Recording: March 3 / 1988
Recorded Holder / Agent Signature: K.T. Hamilton

Certification Verifying Report of Work

I hereby certify that I have a personal and intimate knowledge of the facts set forth in the Report of Work annexed hereto, having performed the work or witnessed same during and/or after its completion and the annexed report is true.

Name and Postal Address of Person Certifying
DONAL O SWILLEAGHAIN, Box 88, GOGAMA
ONTARIO P0M 1W0.

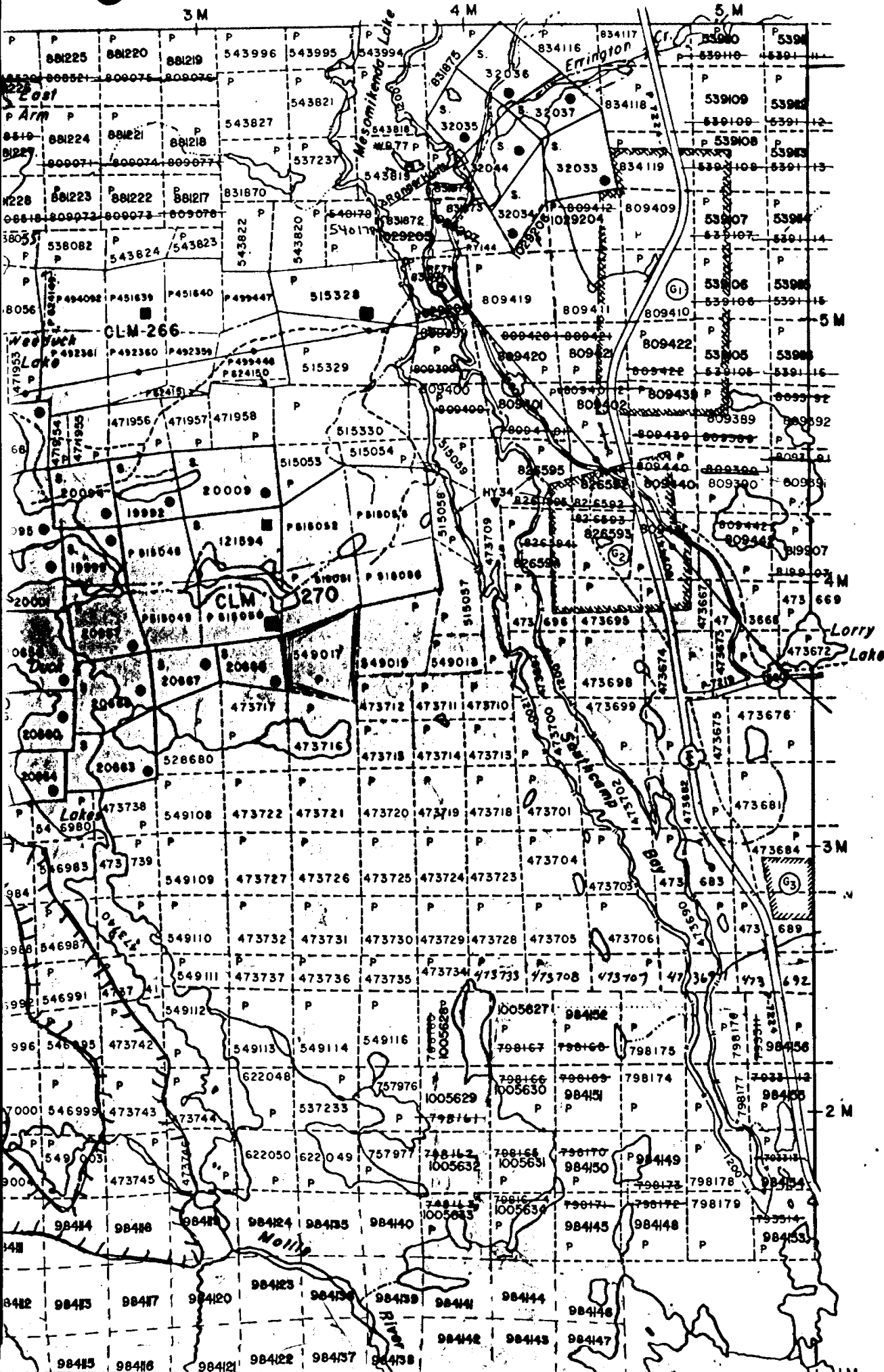
Date Certified: 4-Mar.-88
Certified by (Signature): D.O. Swilleaghain

Table of Information/Attachments Required by the Mining Recorder

Type of Work	Specific information per type	Other information (Common to 2 or more types)	Attachments
Manual Work	Nil	Names and addresses of men who performed manual work/operated equipment, together with dates and hours of employment.	Work Sketch: these are required to show the location and extent of work in relation to the nearest claim post.
Shaft Sinking Drifting or other Lateral Work	Nil		
Compressed Air, other power driven or mechanical equip.	Type of equipment 1988	Names and addresses of owner or operator together with dates when drilling/stripping done.	Work Sketch (as above) in duplicate
Power Stripping	Type of equipment and amount expended. Note: Proof of actual cost must be submitted within 30 days of recording.		
Diamond or other core drilling	Signed core log showing: footage, diameter of core, number and angles of holes.		
Land Survey	Name and address of Ontario land surveyer.	Nil	Nil

LE TP.

Cluster Top



BENNEWEIS TP.

(1) SEC. 43/70 W.2/78 19/10/78 S.R.O. 133115
 (2) ~~Re-opened Dec. 10, 1979 S.R. & M.R. 171509~~

SAND AND GRAVEL

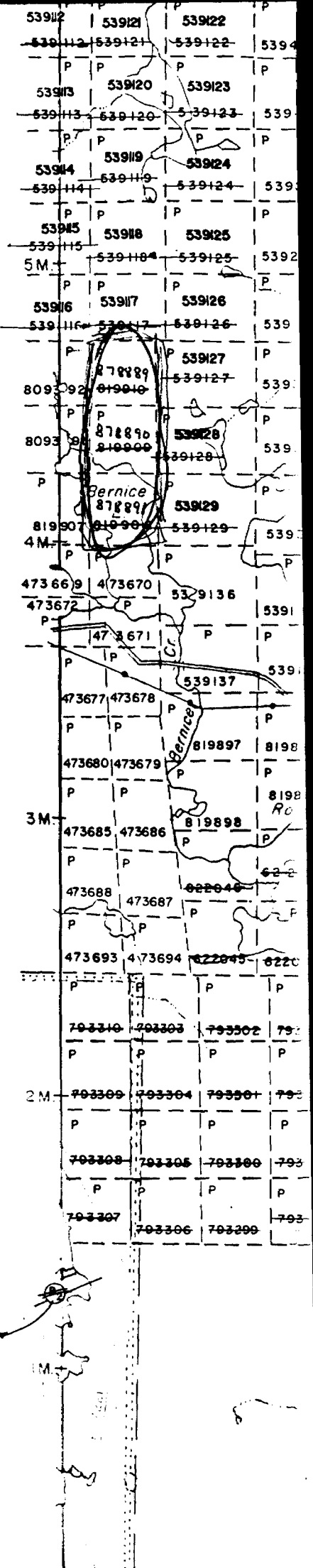
- (1) M.T.C. GRAVEL PIT 1358 File 133115
- (2) M.T.C. GRAVEL PIT 1351
- △ Trapline Cabin

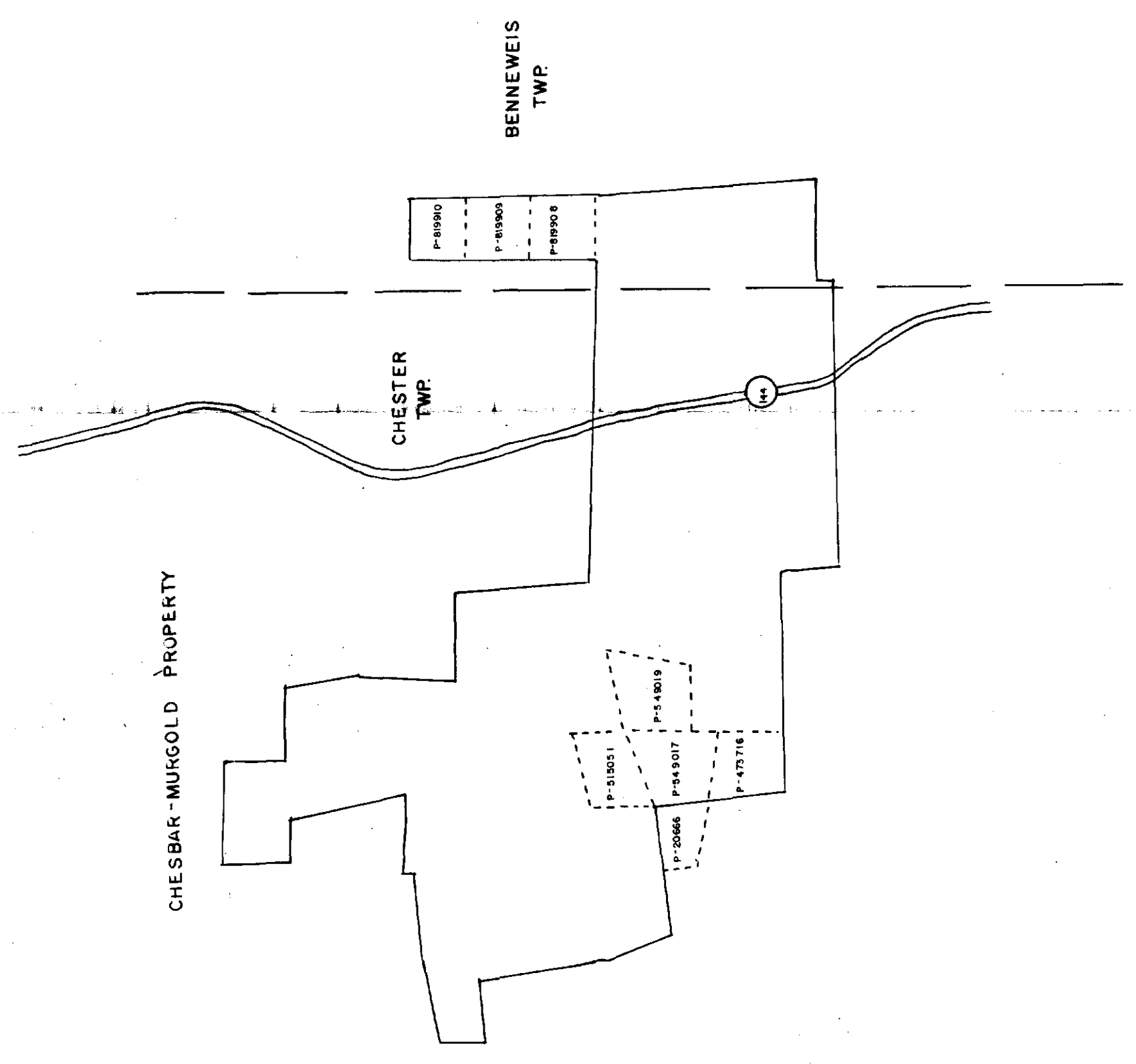
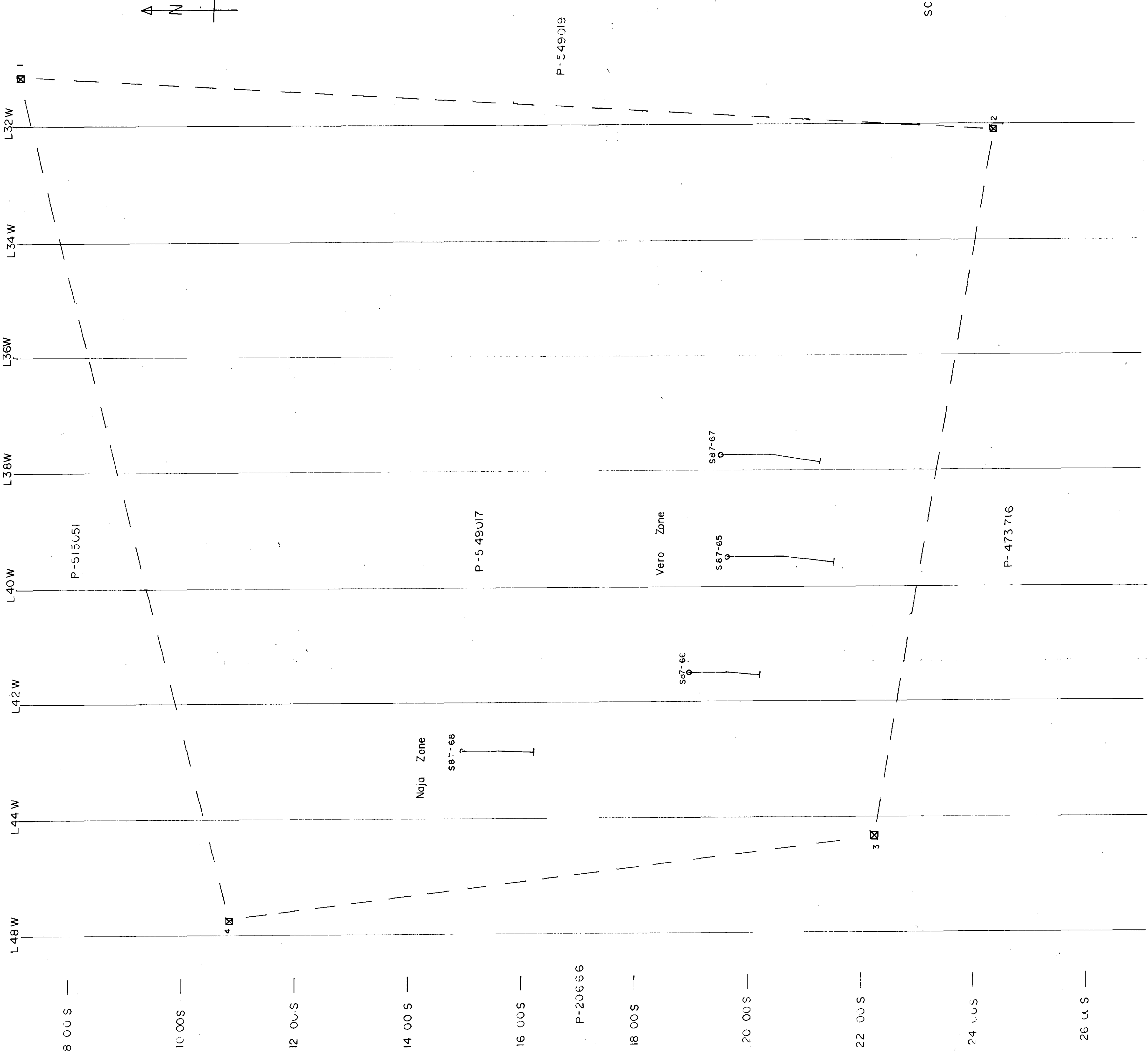
Bennetts Twp.

NOTES

400' SURFACE RIGHTS RESERVATION AROUND MINISINAKWA LAKE TO M.N.R. FILE: 160708.

CHESTER TWP.





ONTARIO GEOLOGICAL SURVEY
ASSESSMENT FILES
OFFICE
APR 22 1988
RECEIVED

CHESBAR RESOURCES INC.
VERO, NAJA ZONES
SURFACE PLAN
DIAMOND DRILLING
CHESTER, BENNEWEIS T.W.P.S.
PORCUPINE MINING DIVISION

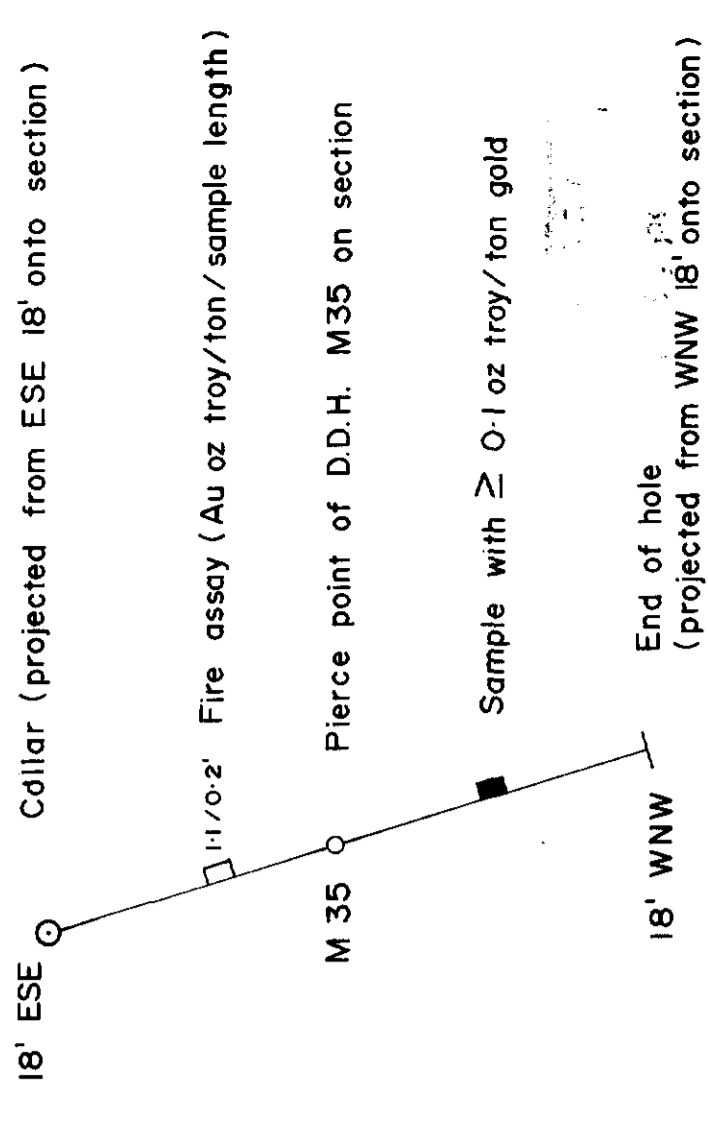
DATE:

SCALE: 1"=100'

BY:



LEGEND



DIAMOND DRILL HOLE IDENTIFICATION

- M Drilled for Murgold
- G Drilled for Gornak
- R Drilled for Rimaldi
- K Drilled for Kingbridge
- O Drilled for Olympia
- C Drilled for Chesgo

ROCK TYPES

- 1 Andesite - Basaltic Metavolcanic (): Moderately altered, may be fine grained intrusive.
- 2 Sheared Turfaceous Unit: Intense alteration, strongly foliated, silicified & carbonized strong shearing.
- 3 Diorite - Quartz Diorite: Largely medium to coarse grained, relatively unaltered.
- 4 Silica - Carbonate - Chlorite Alteration Zone: Moderate to intense propylitization, massive to foliated.
- 5 Alaskite - Granodiorite: Largely fine to medium grained, usually unaltered.
- 6 Migmatite: Intrusive injection zone dioritic intrusive intruding basic-intermediate volcanics, moderate alteration.
- 7 Diabase Dyke

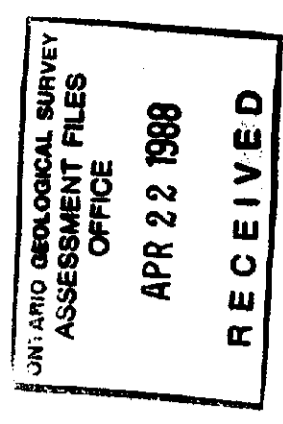
MINERALIZATION

- cpy chalcopyrite
- po pyrrhotite
- py pyrite
- asp arsenopyrite
- qv quartz vein (or veinlets)
- sv siliceous vein
- V.G. visible gold

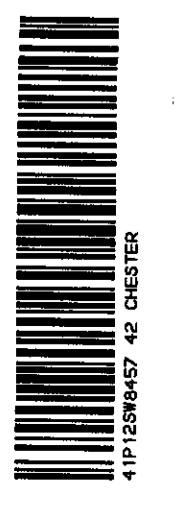
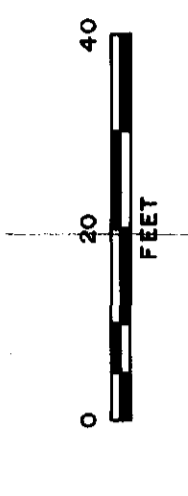
POSITION OF VEIN

- Defined
- Approximate
- Inferred

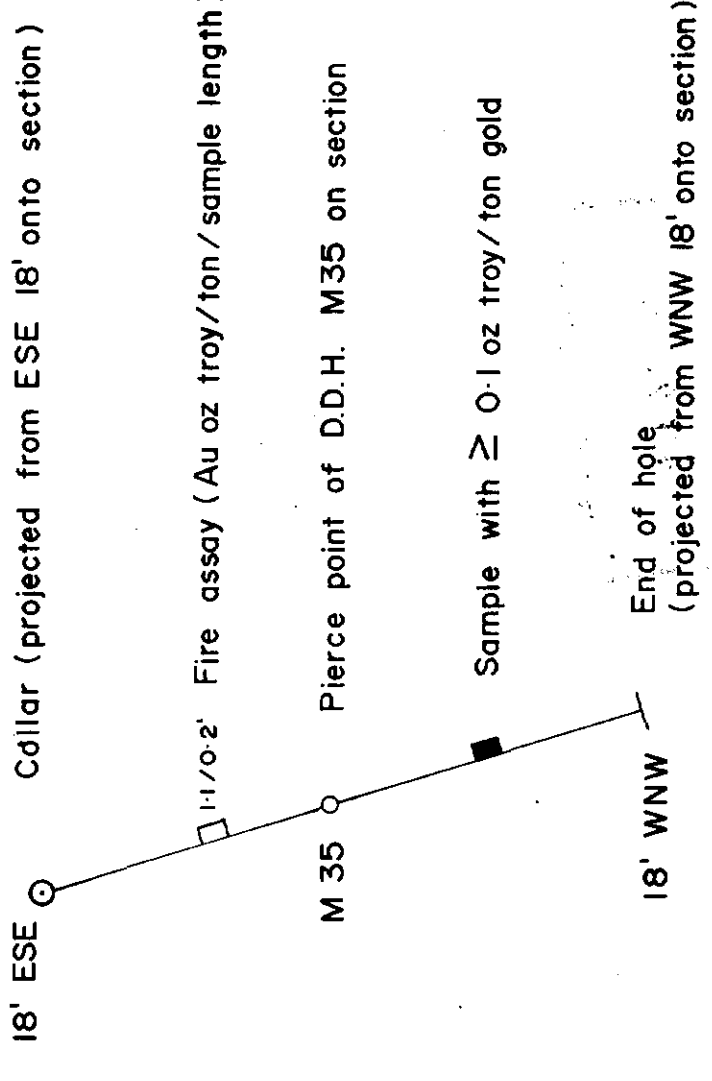
Proposed D.D.H.



FLANAGAN, MCADAM & CO.
 for CHESBAR RESOURCES INC.
 MURGOLD PROJECT
 VERO ZONE
 SECTION : 37+75W
 D.D.H.'s :
 (CROSS-SECTION LOOKING WEST)



LEGEND



DIAMOND DRILL HOLE IDENTIFICATION

- M Drilled for Murgold
- G Drilled for Goma
- R Drilled for Rinaldi
- K Drilled for Kingbridge
- O Drilled for Olympia
- C Drilled for Chesgo

ROCK TYPES

- 1 Andesitic-Basaltic Metavolcanic (): Moderately altered, may be fine grained intrusive.
- 2 Sheared Tuffaceous Unit: Intense alteration, strongly foliated, silicified & carbonatized strong shearing.
- 3 Diorite-Quartz Diorite: Largely medium to coarse grained, relatively unaltered.
- 4 Silica-Carbonate-Chlorite Alteration Zone: Moderate to intense propylitization, massive to foliated.
- 5 Alaskite-Granodiorite: Largely fine to medium grained, usually unaltered.
- 6 Migmatite: Intrusive injection zone, dioritic intrusive intruding basic-intermediate volcanics, moderate alteration.
- 7 Diabase Dyke

MINERALIZATION

- cpy chalcopyrite
- po pyrrhotite
- py pyrite
- asp arsenopyrite
- qv quartz vein (or veinlets)
- sv siliceous vein
- V.G. visible gold

POSITION OF VEIN

- Defined
- Approximate
- Inferred

Proposed D.D.H.

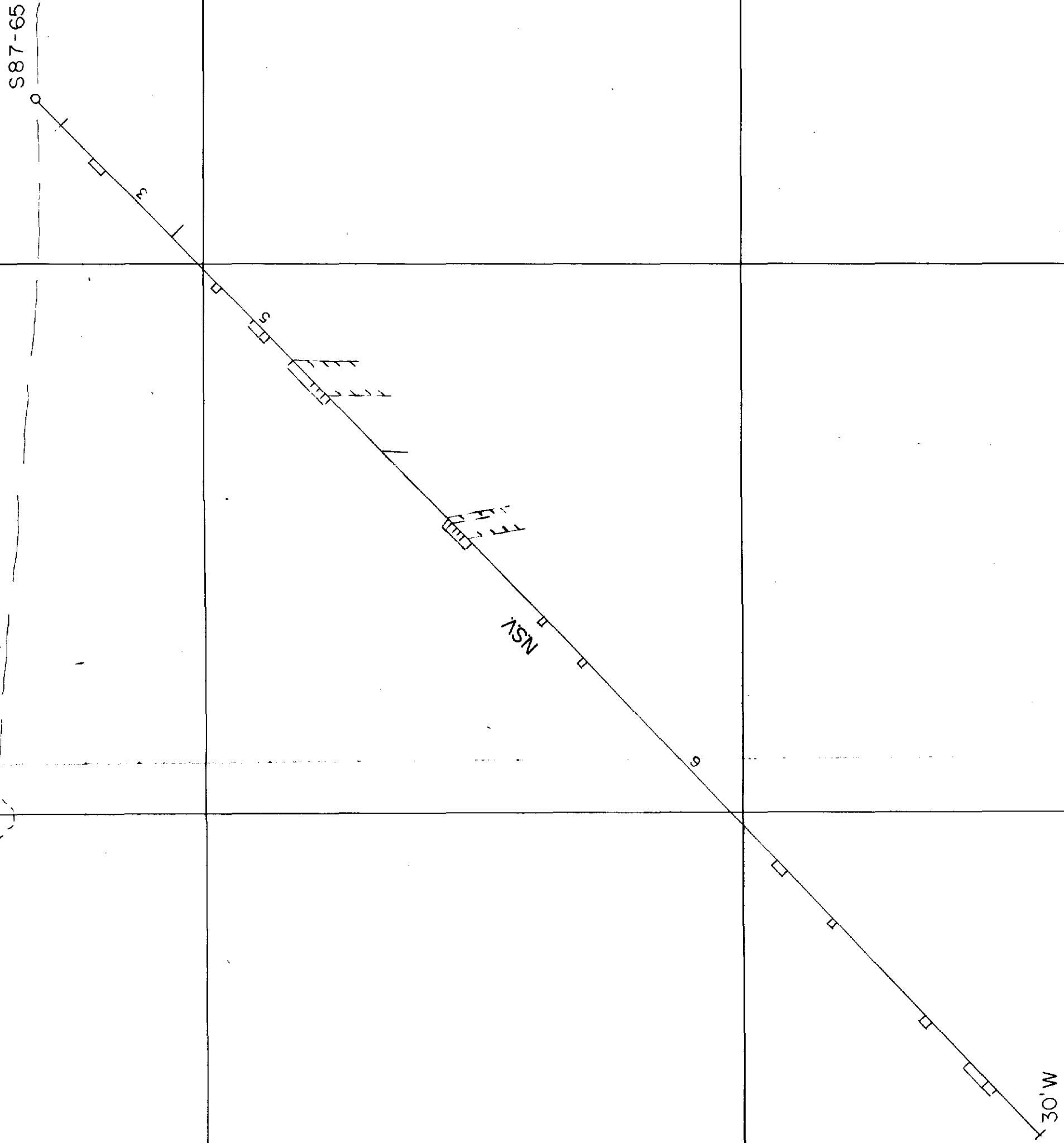
ONTARIO GEOLOGICAL SURVEY
ASSESSMENT FILES
OFFICE
APR 22 1988
RECEIVED

FLANAGAN, MCADAM & CO.
for CHESBAR RESOURCES INC.

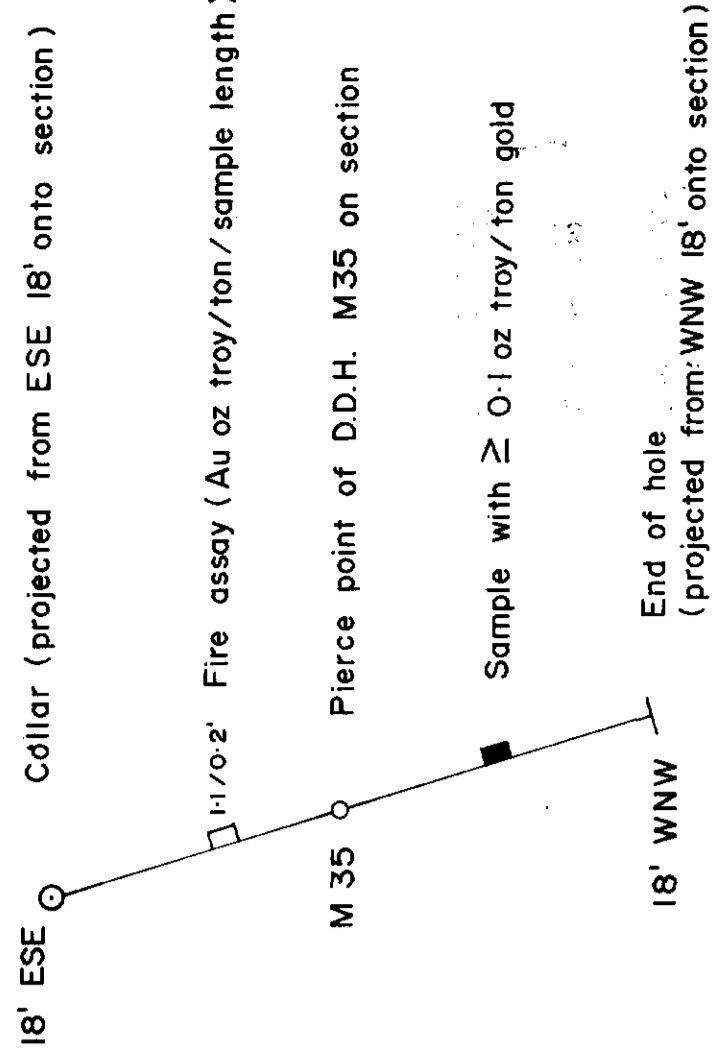
MURGOLD PROJECT
VERO ZONE

SECTION : 39+50W
D.D.H.'s :

Date : _____ Scale : 1" = 20' By : _____



LEGEND



DIAMOND DRILL HOLE IDENTIFICATION

- M Drilled for Murgold
- G Drilled for Gomak
- R Drilled for Rinaldi
- K Drilled for Kingbridge
- O Drilled for Olympia
- C Drilled for Chesgo

ROCK TYPES

- 1 Andesite - Basaltic Metavolcanic (): Moderately altered, may be fine grained intrusive.
- 2 Sheared Tuffaceous Unit: Intense alteration, strongly foliated, silicified & carbonatized strong shearing.
- 3 Diorite - Quartz Diorite: Largely medium to coarse grained, relatively unaltered.
- 4 Silica - Carbonate - Chlorite Alteration Zone: Moderate to intense propylitization, massive to foliated.
- 5 Alaskite - Granodiorite: Largely fine to medium grained, usually unaltered.
- 6 Migmatite: Intrusive injection zone, dioritic intrusive intruding basic-intermediate volcanics, moderate alteration.
- 7 Diabase Dyke

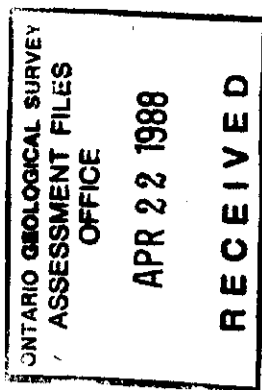
MINERALIZATION

- cpy chalcopyrite
- po pyrrhotite
- py pyrite
- asp arsenopyrite
- qv quartz vein (or veinlets)
- sv siliceous vein
- V.G. visible gold

POSITION OF VEIN

- Defined
- Approximate
- Inferred

Proposed D.D.H.

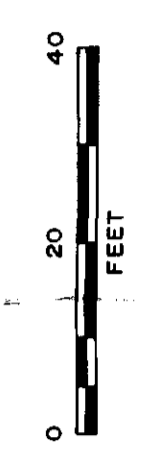
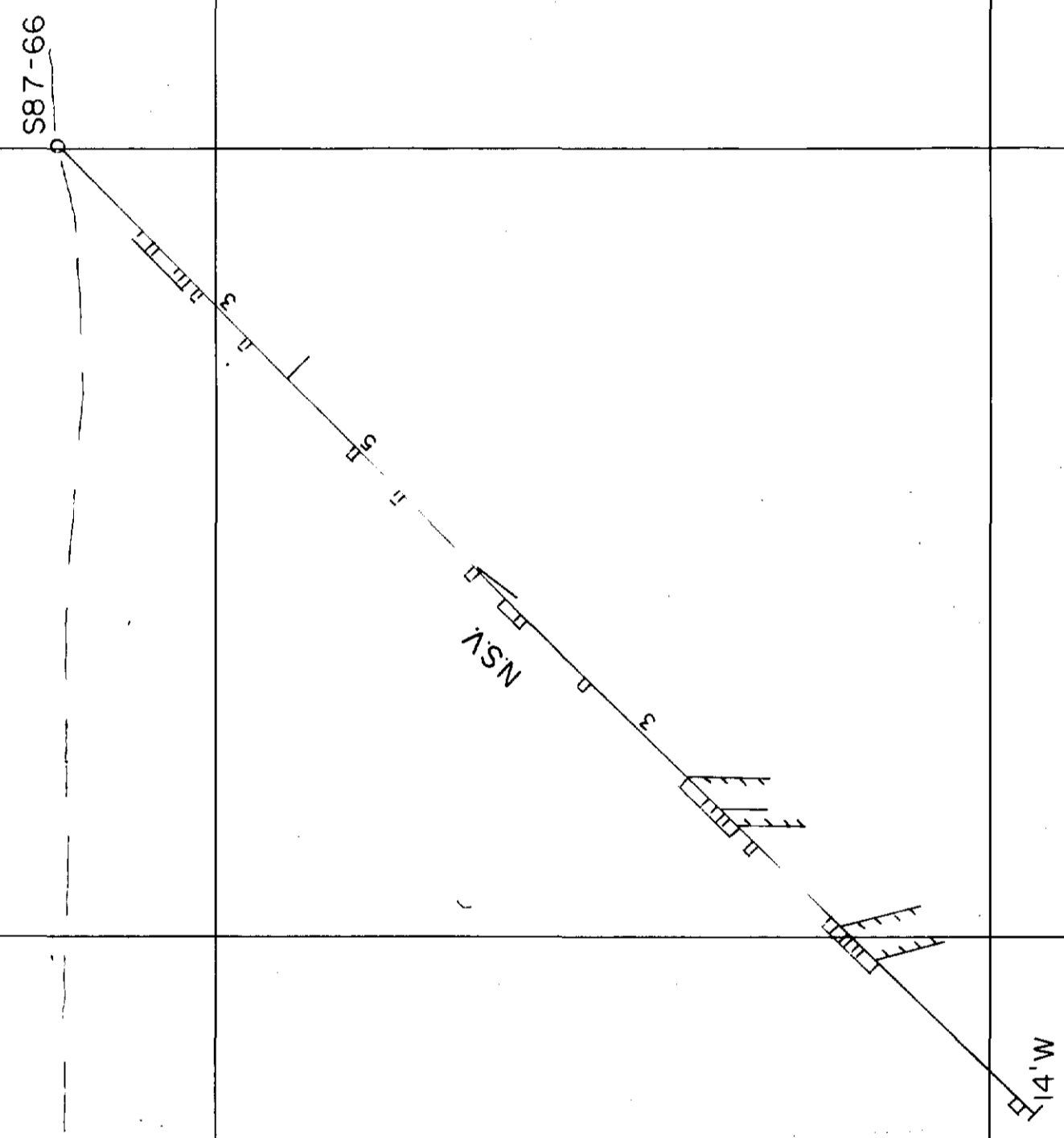


FLANAGAN, MCADAM & CO.
for CHESBAR RESOURCES INC.

MURGOLD PROJECT
VERO ZONE

SECTION: 41+50 W
D.D.H.'s:

Date: _____ Scale: 1" = 20' By: _____



2100'S

1900'S

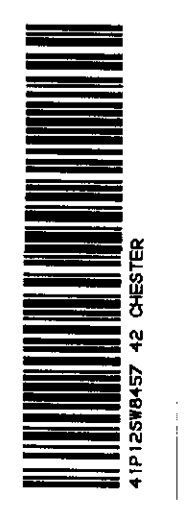
2000'S

2100'S

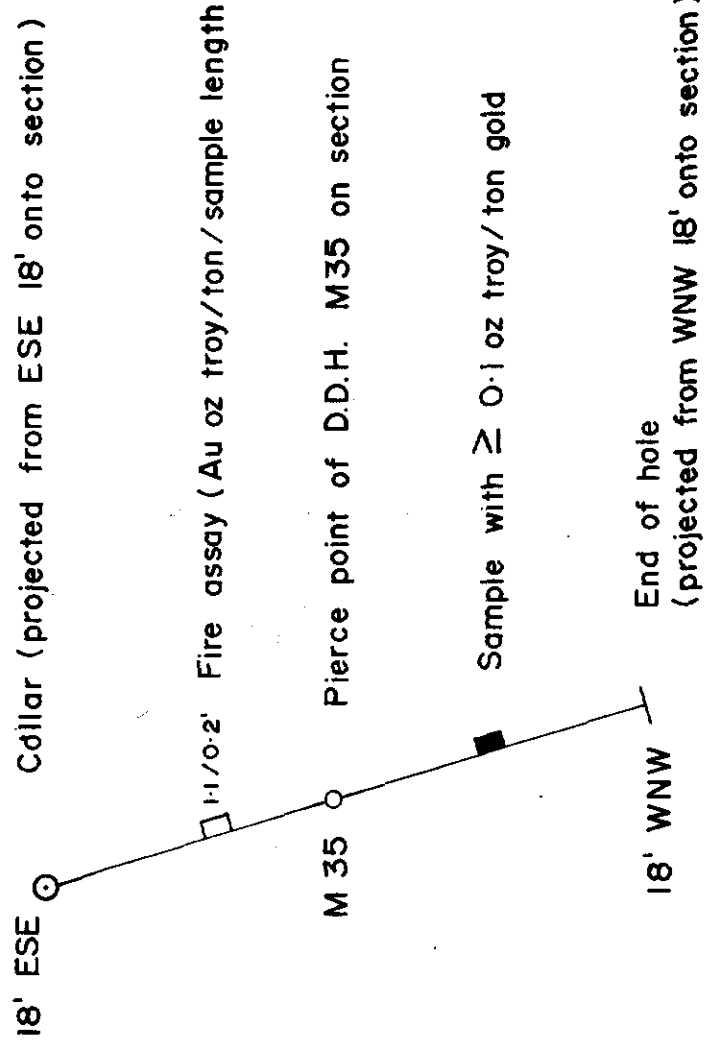
2200'S

2300'S

2400'S



LEGEND



DIAMOND DRILL HOLE IDENTIFICATION

- M Drilled for Murgold
- G Drilled for Gomak
- R Drilled for Rinaldi
- K Drilled for Kingbridge
- O Drilled for Olympia
- C Drilled for Chesgo

ROCK TYPES

- 1 Andesitic-Basaltic Metavolcanic (); Moderately altered, may be fine grained intrusive.
- 2 Sheared Tuffaceous Unit: Intense alteration, strongly foliated, silicified & carbonized strong shearing.
- 3 Diorite-Quartz Diorite: Largely medium to coarse grained, relatively unaltered.
- 4 Silica-Carbonate-Chlorite Alteration Zone: Moderate to intense propylitization, massive to foliated.
- 5 Alaskite-Granodiorite: Largely fine to medium grained, usually unaltered.
- 6 Migmatite: Intrusive injection zone, dioritic intrusive intruding basic-intermediate volcanics, moderate alteration.
- 7 Diabase Dyke

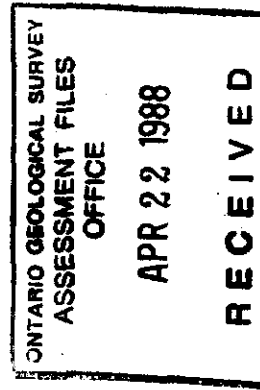
MINERALIZATION

- cpy chalcopyrite
- po pyrrhotite
- py pyrite
- asp arsenopyrite
- qv quartz vein (or veinlets)
- sv siliceous vein
- V.G. visible gold

POSITION OF VEIN

- Defined
- Approximate
- Inferred

----- Proposed D.D.H.

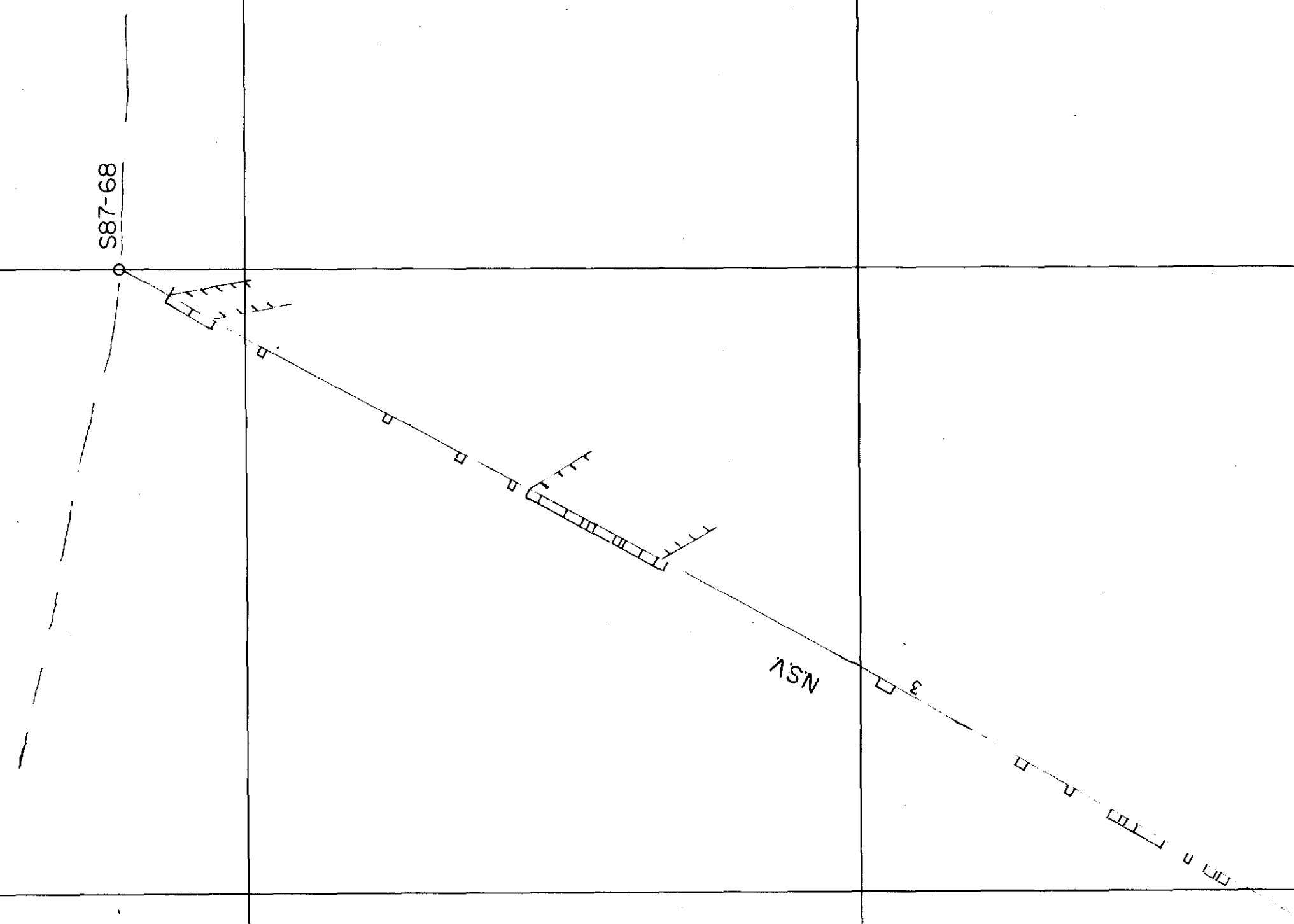


FLANAGAN, MCADAM & CO.
for CHESBAR RESOURCES INC.

MURGOLD PROJECT
NAJA ZONE

SECTION: 42+85W
D.D.H.'s:

Date: _____ Scale: 1" = 20' By: _____



18700 S
15700 S
14700 S

