

Diamond I



41P14NE0040 28 MIDLOTHIAN

010

Township of MIDLOTHIAN

Report NO: 28

Work performed by: International Trust Company

Claim NO	Hole NO	Footage	Date	Note
L 298912	#S-1	508'	June/72	(1) (2) (3)
L 298908	#S-2	451'	June/72	(1) (2) (3)
	#S-3	401'	June/72	(1) (2) (3)
L 298913	#S-4	454'	July/72	(1) (2) (3)

Notes: (1) 157/74
(2) 108/75
(3) 116/75

ASBESTOS DIAMOND DRILL LOG

LOCATION L-4W 14503
 LAT. Paced 700 to Main Rd
 DEP. _____
 ELEVATION OF COLLAR approx 1220 (in swamp)
 DATUM _____
 DIRECTION AT START South
 BRG. _____
 DIP 45°

STARTED June 1972
 COMPLETED JUNE 1972
 PROPOSED DEPTH _____
 ULTIMATE DEPTH 508

DIAMOND DRILL HOLE NO. 5-1
 DATE MILLED _____
 PRICES USED _____
 DATE LOGGED Aug. 7/74
 METHOD _____
 LOGGED BY J. D. HAGAN

GEOLOGICAL DESCRIPTION	BENCH	FOOTAGE		LEGEND	RE-COV-ERY	FIBRE VEINS										ESTIMATED YIELD		CORE MILL RESULTS		REMARKS
		FROM	TO			1/32"	1/16"	1/8"	3/16"	1/4"	5/16"	3/8"	7/16"	1/2"	%	\$	YIELD	VALUE/TON ORE	FIBRE	
0-31 casing																				
31-122 ULTRA BASICS Medium grained fairly massive gabbroic rock with occasional 1/16 to 1/8" talc slip.																				
86-122 fine grained dunite																				
122-248 Fine gr. black dunite, massive barren - few fractures																				
122-508 INTERMEDIATE VOLCANICS fine grained - massive barren dacite																				
508 END OF HOLE																				

(Handwritten signature/initials)

Mid Isthian
claim 298 909

ASBESTOS DIAMOND DRILL LOG

LOCATION L-20 W 1450 N
 LAT. _____
 DEP. _____
 ELEVATION OF COLLAR cap/iron 1240
 DATUM _____
 DIRECTION AT START N 20° E
 BRG. _____
 DIP 60°

STARTED June 1972
 COMPLETED June 1972
 PROPOSED DEPTH _____
 ULTIMATE DEPTH 451

DIAMOND DRILL HOLE NO. 5-2 ①
 DATE MILLED _____
 PRICES USED _____
 DATE LOGGED August 9 1974
 METHOD _____
 LOGGED BY J.D. Hagan

GEOLOGICAL DESCRIPTION	BENCH	FOOTAGE		LEGEND	RE-COV-ERY	FIBRE VEINS								ESTIMATED YIELD		CORE MILL RESULTS		REMARKS		
		FROM	TO			1/32"	1/16"	1/8"	3/16"	1/4"	5/16"	3/8"	7/16"	1/2"	%	\$	YIELD		VALUE/TON ORE	FIBRE
0-12 CASING (in place)																				
12-154.5 INTERMEDIATE VOLCANICS																				
12-71 light grey dacite fractured in places over 2 to 3 feet 62-63 1/2 lost core 70-73 lost core																				
25.5-27.5 split core (sampled) 5% pyrrhotite																				
71-154.5 Dark grey -andesite - massive barren.																				
154.5-261 ULTRA BASIC Light grey - medium grained - gabbroic																				
154.5 1/8" cross fibre vein at 30°																				
182 7 minor cross fibre veins 1/32 to 1/16																				
187.5 1/8" cross fibre vein along core 2"																				
254-261 Dacite - almost black - serpentinized																				

J.D. Hagan, Eng.

ASBESTOS DIAMOND DRILL LOG

(2)

LOCATION _____
 LAT. _____
 DEP. _____
 ELEVATION OF COLLAR _____
 DATUM _____
 DIRECTION AT START _____
 BRG. _____
 DIP _____

STARTED _____
 COMPLETED _____
 PROPOSED DEPTH _____
 ULTIMATE DEPTH _____

DIAMOND DRILL HOLE NO. S-2
 DATE MILLED _____
 PRICES USED _____
 DATE LOGGED _____
 METHOD _____
 LOGGED BY _____

GEOLOGICAL DESCRIPTION	BENCH	FOOTAGE		LEGEND	RE- COV- ERY	FIBRE VEINS										ESTIMATED YIELD		CORE MILL RESULTS		REMARKS
		FROM	TO			1/32"	1/16"	1/8"	3/16"	1/4"	5/16"	3/8"	7/16"	1/2"	%	\$	YIELD	VALUE/TON ORE FIBRE		
261-287 fine grained diabase dyke.																				
287-350 ULTRA BASICS broken & slicken sided																				
292 Two 1/8" cross fibre veins at 76°																				
350-451 ULTRA BASICS very light - few green highly weathered very soft. About 5% tear fibrous slips																				
451 END OF HOLE																				

S-2
Cmg

ASBESTOS DIAMOND DRILL LOG

298913

(2)

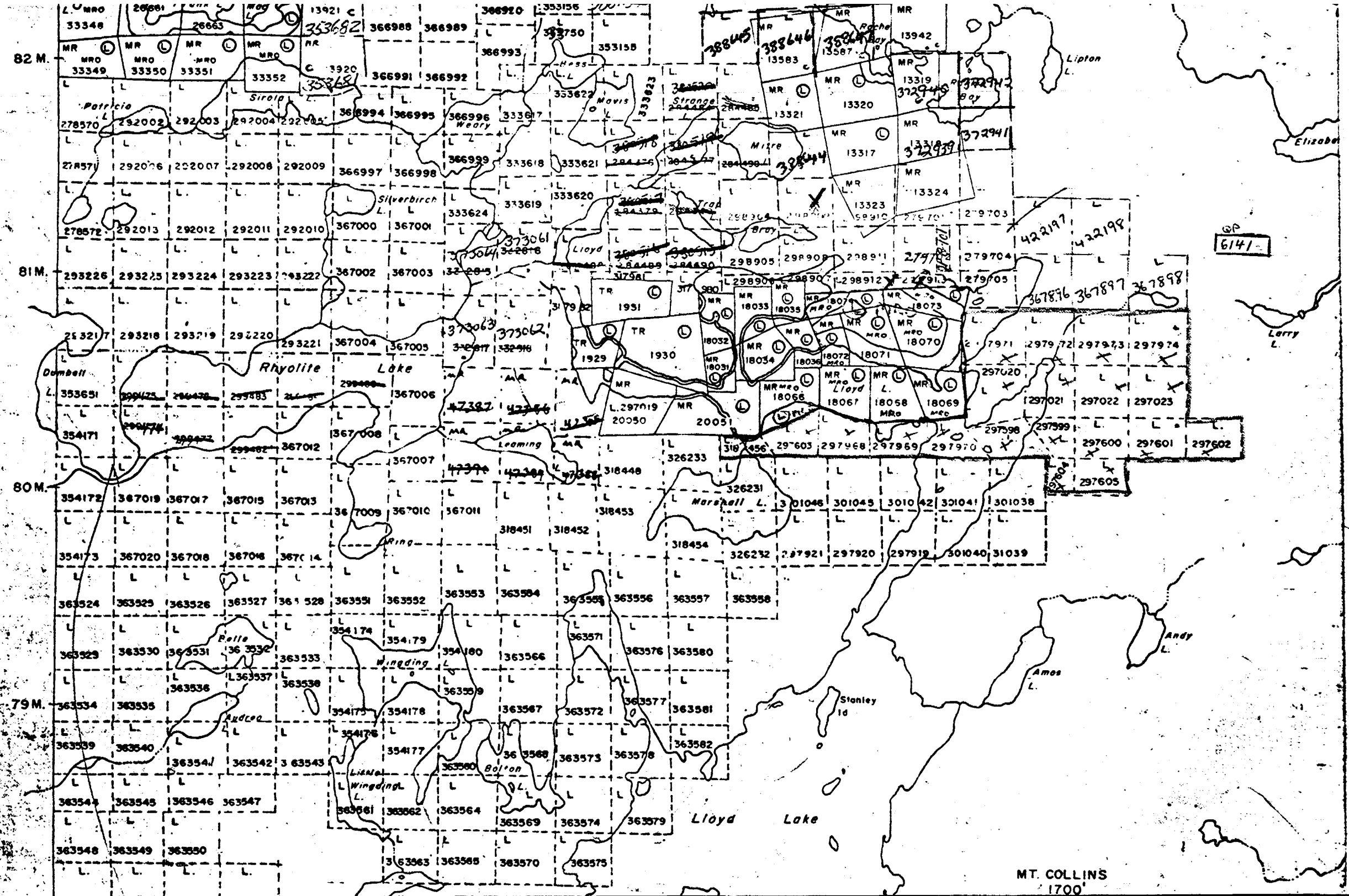
LOCATION _____
 LAT. _____
 DEP. _____
 ELEVATION OF COLLAR _____
 DATUM _____
 DIRECTION AT START _____
 BRG. _____
 DIP _____

STARTED _____
 COMPLETED _____
 PROPOSED DEPTH _____
 ULTIMATE DEPTH _____

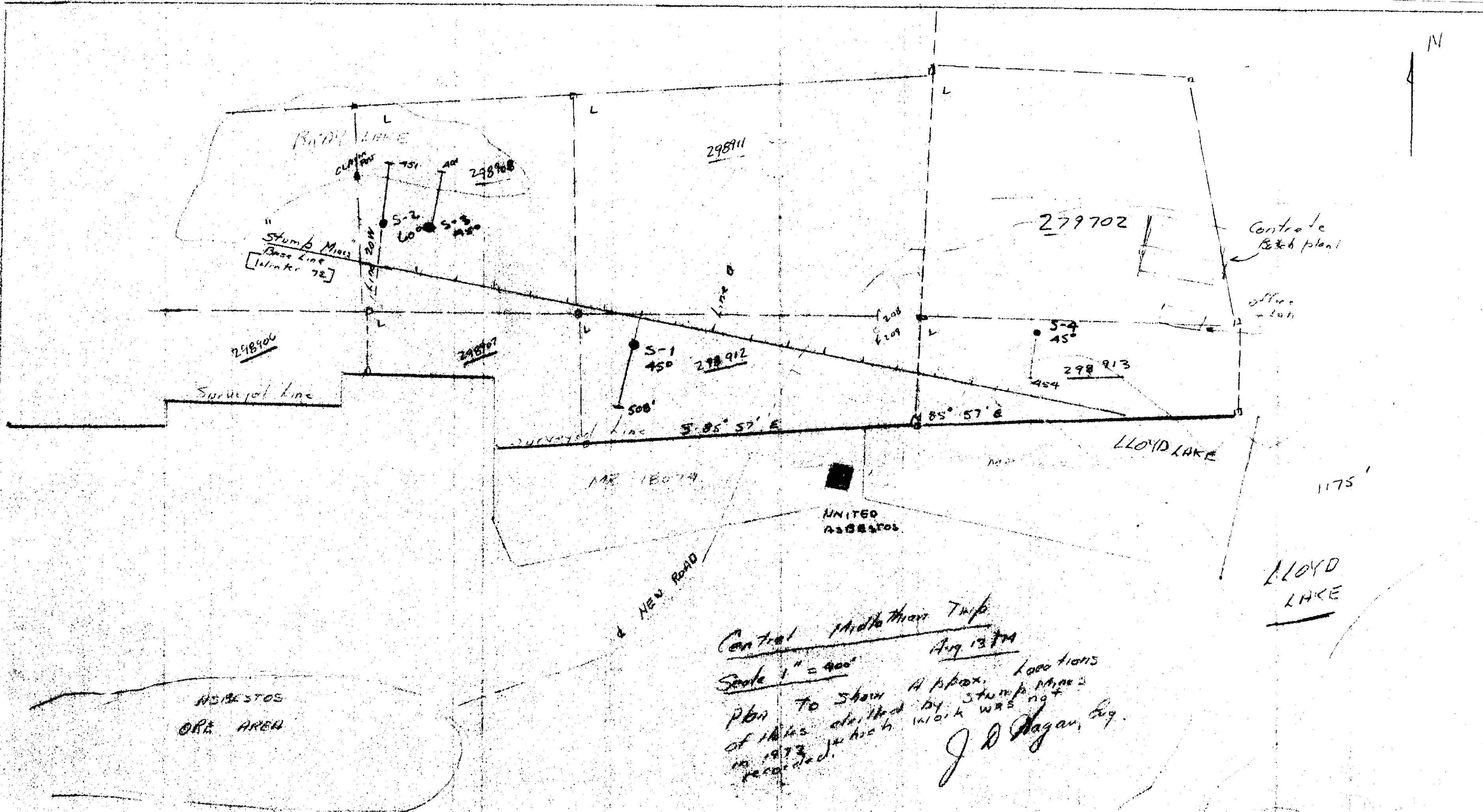
DIAMOND DRILL HOLE NO. S-3
 DATE MILLED _____
 PRICES USED _____
 DATE LOGGED _____
 METHOD _____
 LOGGED BY _____

GEOLOGICAL DESCRIPTION	BENCH	FOOTAGE		LEGEND	RE- COV- ERY	FIBRE VEINS								ESTIMATED YIELD		CORE MILL RESULTS		REMARKS	
		FROM	TO			1/32"	1/16"	1/8"	3/16"	1/4"	5/16"	3/8"	7/16"	1/2"	%	\$	YIELD		VALUE/TON ORE FIBRE
253-401 ULTRA BASICS																			
253-264 Dark coloured serpentinized diorite Minor tale veins 1/16"																			
264-277 Light green highly sheared and altered - very soft.																			
277-312 Serpentinized diorite similar to Lloyd Lake																			
280 Two 1/16" cross fibre veins over 3'.																			
312-316 light coloured rhyolite dyke.																			
316-401 Light green weathered gabbro. sheared locally.																			
401 END OF HOLE																			

HALLIDAY TWP. (M. 910)



MT. COLLINS
1700'



Central Midlothian Trip
 Aug 13th
 Scale 1" = 400'
 Plan to show approx. locations
 of holes drilled by Stump Mine
 in 1973. (work was not
 recorded.)
 J. D. Pagan, Eng.

