



41P14NW0014 27 SOTHMAN

010

Diamond Drilling

Township of SOTHMAN

Report NO: 27

Work performed by: Granges Exploration AB

Claim NO	Hole NO	Footage	Date	Note
L 242422	S-75-5	229.0'	Oct/75	(1)
	S-75-10	265.0'	Dec/75	(1)
L 242423	S-75-6	277.0'	Oct/75	(1)
		<u>771</u>		

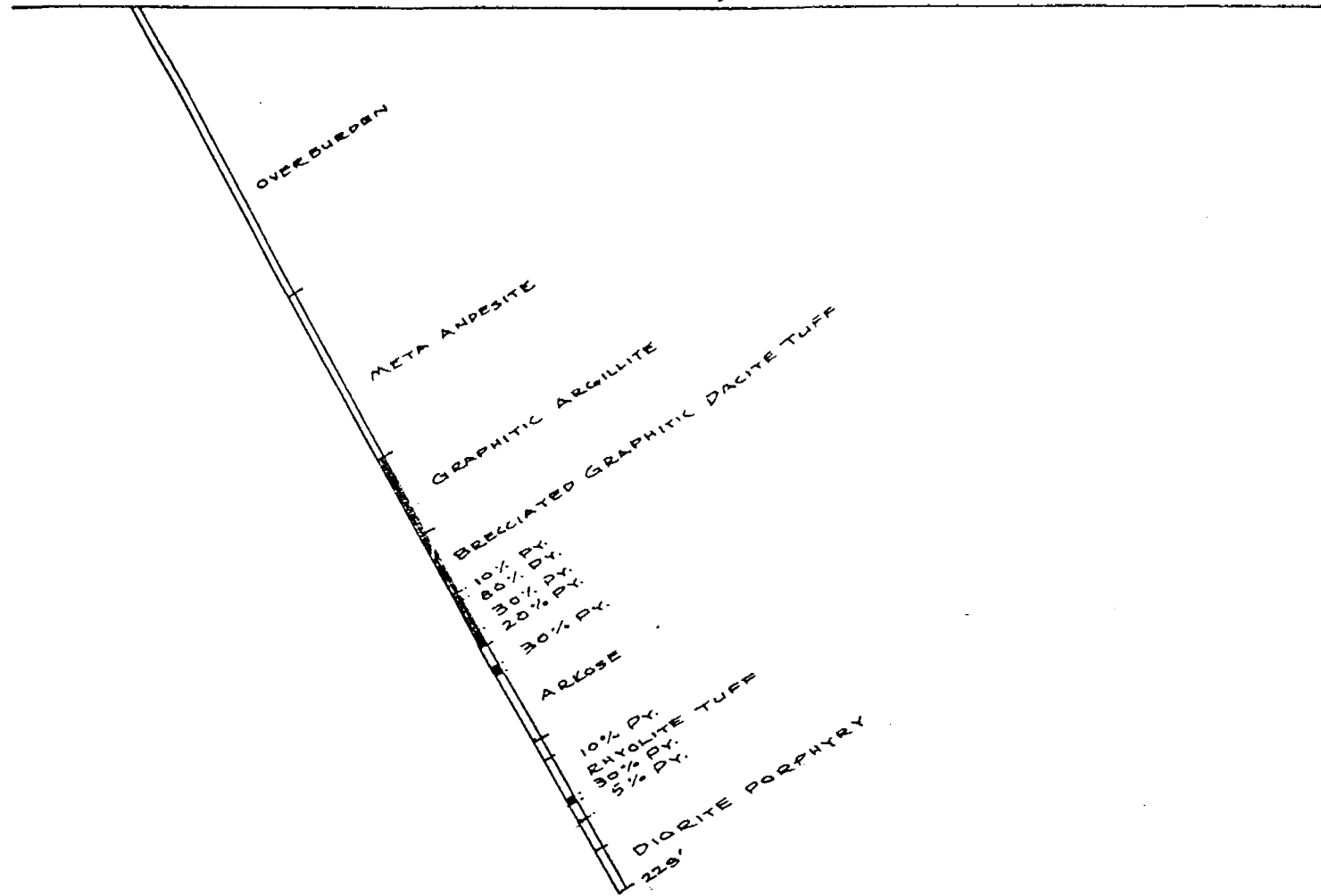
Notes:

(1) #323-75

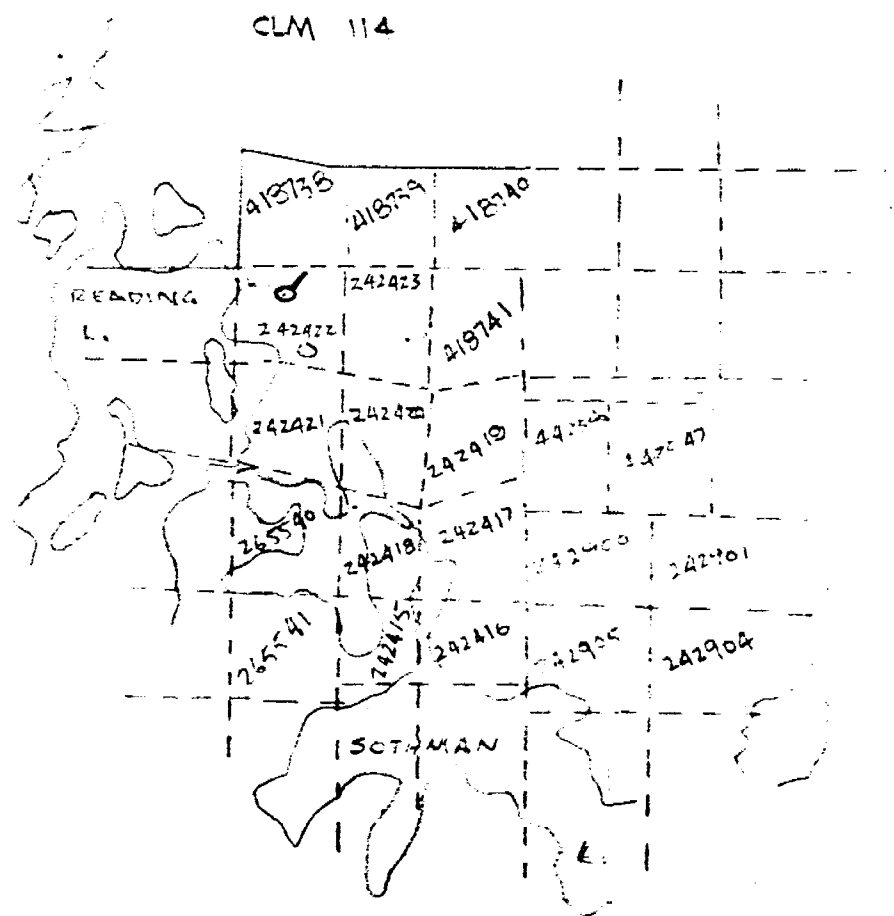
S-75-5

12+30 S
33+15 N
-60°

CONDUCTOR
⊕



GRANGES EXPLORATION AB
GRANT OPTION, GRID 39
SOTHMAN TWP., ONTARIO
SCALE: 1"=40' LOOKING N-25°-W



DDH # 5-75-5

323-75 SOTHMAN Twp.

D. SIROLA

GRANGES EXPLORATION AS
 DIAMOND DRILL HOLE LOCATIONS
 GRANT OPTION, SOTHMAN TWP

S-75-10

39+50W
17+40S

CONDUCTOR

E

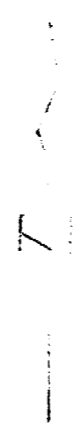
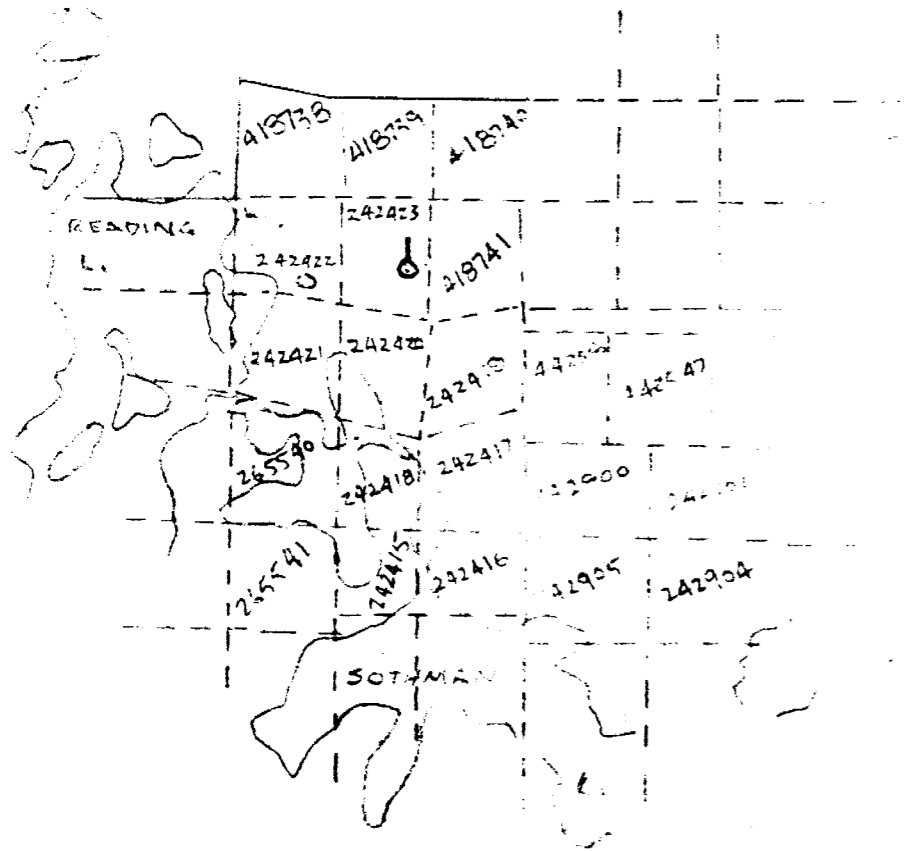
OVERBURDEN

META ANDESITE TYPE
SECTIONS GRANITE

GRANGES EXPLORATION AB
GRANT OPTION - GRID 39
SOUTHMAN TWP., ONTARIO
SCALE 1:25000 LOOKING N-430-W

CLM 114

D.D.H = S-75-6



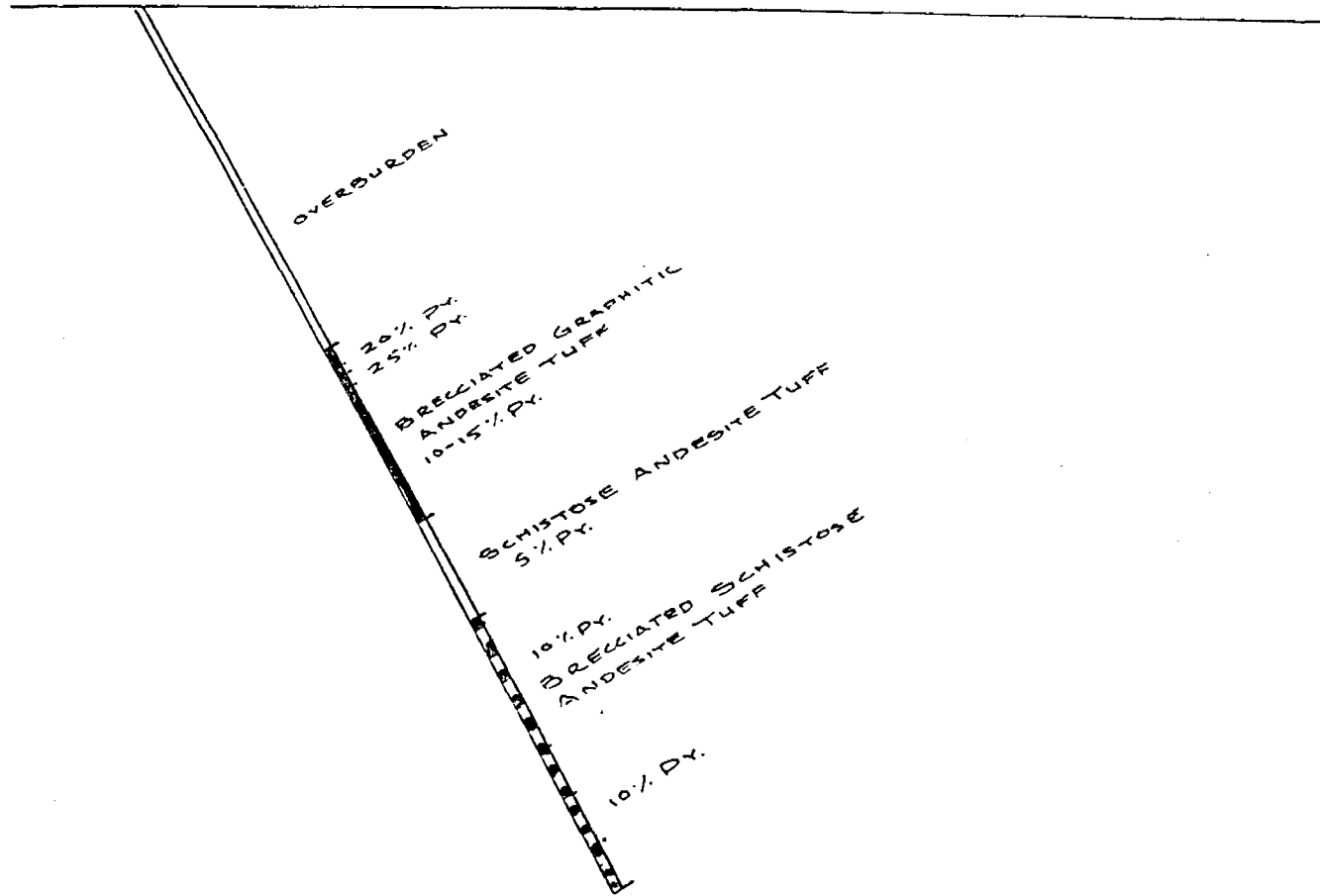
GRANGES EXPLORATION AB
DIAMOND DRILL HOLE LOCATIONS
GRANT OPTION, SOTHMAN TWP
1975

S-75-6

18+00W
24+05S

|-60°

CONDUCTOR



GRANGES EXPLORATION AB
GRANT OPTION, GRID 39
SOTHMAN TWP, ONTARIO
SCALE: 1"=40' LOOKING WEST