

41P14NW1017 0010A1 RHODES

010

RHODES TOWNSHIP REPORT #10

This file contains work performed by E. Blanchard on claims:

S.134142	Hole #1;	June 1966	106.5'
	2;	July 1966	101.0'
S.134135	Hole #3;	July 1966	103.0'
	#4;	Aug. 1966	107.0'
			109.0'
TOTAL: 4 DH		TOTAL: 419.5 FT	

DIAMOND DRILL RECORD
(recopied by O.D.M.)

HOLE No: 1

PROPERTY: Iron

STARTED: June 22/66

LOCATION: Rhodes Twp.
CL134142

COMPLETED: June 29/66

DIP: 90°

DRILLED BY: L. Bower
B. Haystead

TOTAL FOOTAGE: 106'6"

LOGGED BY: E. Blanchard

LOG: Formation

Remarks

0-17 Iron formation massive
magnetite

Iron formation in collar
zone, assayed 62.2 Fe₂O₃

17-56 Green Stone

56-106'6" Iron formation, stringers
of quartz and some stringers
of pegmetite overall grade
or iron formation approx.
30%.

Date of Examination

July 7, 1966

E. Blanchard

HOLE No: 2

PROPERTY: Iron

STARTED: July 7/66

LOCATION: Rhodes Twp.
CL.134142

COMPLETED: July 20/66

DIP: 90°

DRILLED BY: L. Bower
B. Haystead

TOTAL FOOTAGE: 101'

LOGGED BY: E. Blanchard

LOG:

Remarks

0-12	Massive magnetite iron formation	Iron formation 0'-12' assayed 46.72 Fe ₂ O ₃
12-15	Green stone and granite stringers	
15-85	Iron formation	
85-101	Greenstone	

Date of Examination

July 29/66

E. Blanchard

HOLE No: 3

PROPERTY: Iron

STARTED: July 21/66

LOCATION: Rhodes Twp.
CL.134135

COMPLETED: July 26/66

DIP: 90°

DRILLED BY: L. Bower
B. Haystead

TOTAL FOOTAGE: 103'

LOGGED BY: E. Blanchard

LOG:

Remarks

0-23 Iron formation
massive magnetite
23-100 Greenstone

Iron formation
0'-23' assayed
49.2 Fe₂O₃

Date of Examination

July 26/66

E. Blanchard

HOLE No.: 4

PROPERTY: Iron

STARTED Aug. 9/66

LOCATION: Rhodes Twp.
CL.134135

COMPLETED: Aug. 15/66

DIP: 85°

DRILLED BY: L. Bower
B. Haystead

TOTAL FOOTAGE: 109'

LOGGED BY: E. Blanchard

LOG:

0-7 Massive magnetite
7-12 Greenstone small quartz stringers
12-61 Magnetite Iron formation
61-109 Greenstone

E. Blanchard

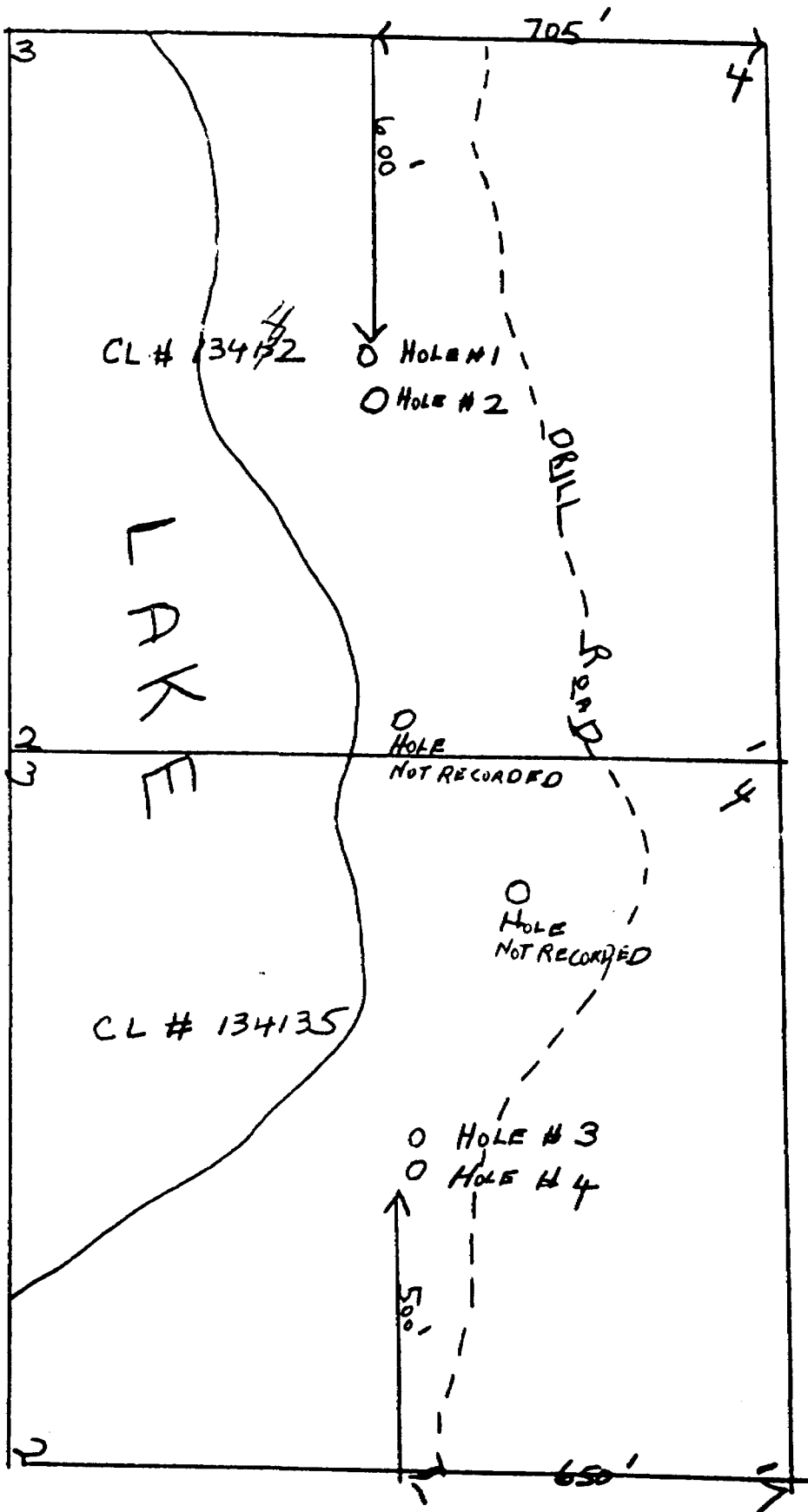
Date of Examination

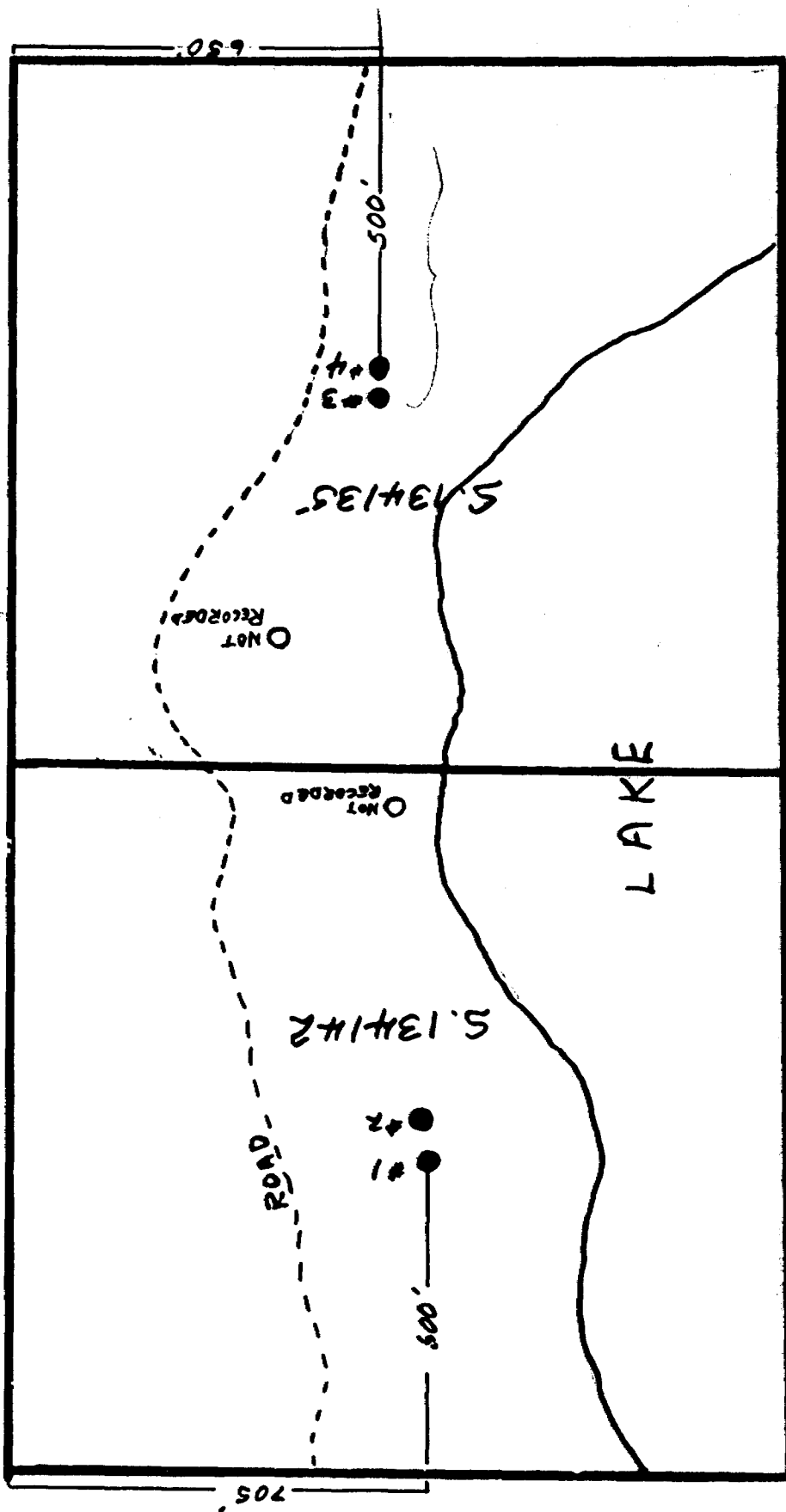
August/66

DIAMOND

DRILLING
RHODES TWP

1" = 300'





DUNBAR TWP. M.768

18M 17M 16M 15M 14M 13M+2 900 12M



41P14NW1817 0010A1 RHODES

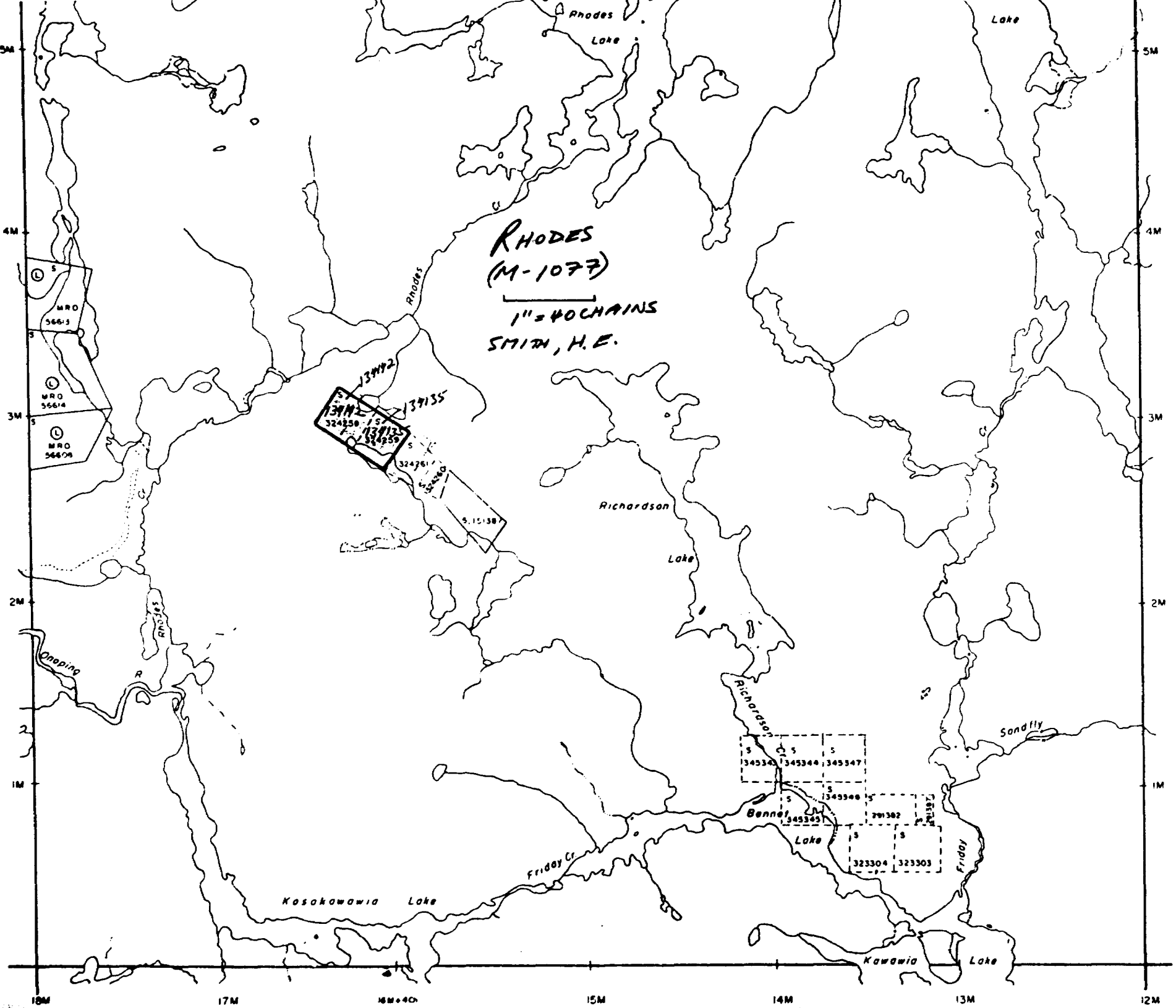
900

Rhodes
Lake

Friday
Lake

RHODES
(M-1077)

1" = 40 CHAINS
SMITH, H.E.



EMO TWP. M.768

BOTHA TWP. M.674

18M 17M 16M+40 15M 14M 13M 12M

LEINSTER TWP. M.985