

A Report
On The Stripping Program
On Claim 1184135
Cairo Township
Larder Lake Mining Division
Matachewan, Ontario
UTM Coordinate
5314600 N
534700 E

For

Biralger Resources Ltd.

By

Raymond A. Bernatchez, P. Eng.
Consulting Geologist

January 17, 2005

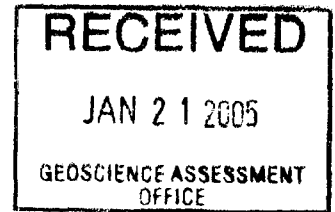


Table of Content

- 3 – Summary**
- 4 – Introduction**
- 4 - Property Description**
- 6 - Regional and local**
- 7 - Description of Stripping Areas ‘A’, ‘B’, ‘C’ and ‘D’.**
- 12 - Geological Traverse**
- 12 – Mineralization**
- 13 – Results**
- 14 – Recommendations**
- 15 - Recommended Exploration Program**
- 16 – Summary of Costs**
- 17 – Appendix ‘A’. - Client report**

Maps and Illustrations

- 5 – Claim Map of Property**
- 8 – Map showing locations of trenches and traverse.**
- 9 - Figure 1 – Picture of Stripping area ‘A’**
- 10 - Figure 2 – Picture showing Stripping area ‘B’**
- 11 - Figure 3 – Picture showing Stripping area ‘C’**

Summary

A stripping Program was carried out on claim 1184135 located on the eastern boundary of Cairo Township, 12 km east of Matachewan, near Highway 66. The Claim is held by Biralger Resources Ltd., client number 108485.

The purpose of this program was to determine the extent of chalcopyrite, bornite, pyrite and molybdenite mineralization located along the syenite-volcanic-sedimentary contact located along the south southeast contact of the Cairo Stock.

A total of 275 metres of stripping was carried out at a width varying from 3 to 20 metres wide (aver. - 10m) on this claim, over an area measuring 150m x 200m near the eastern boundary of this claim. The stripping program was carried out between May 6 to and May 9, 2004.

Detailed mapping was carried out over the trenched areas from October 17 to October 26, 2004. Numerous samples were collected during this survey for further study and analysis.

A day of geological traversing and prospecting was carried out west and southwest of the stripped areas. Several samples were also collected during this work.

Results were very encouraging. The chalcopyrite, bornite, molybdenite and pyrite mineralization was identified throughout the stripping and prospected areas.

It is recommended that further work such as stripping and mapping be carried out on the property.

Introduction

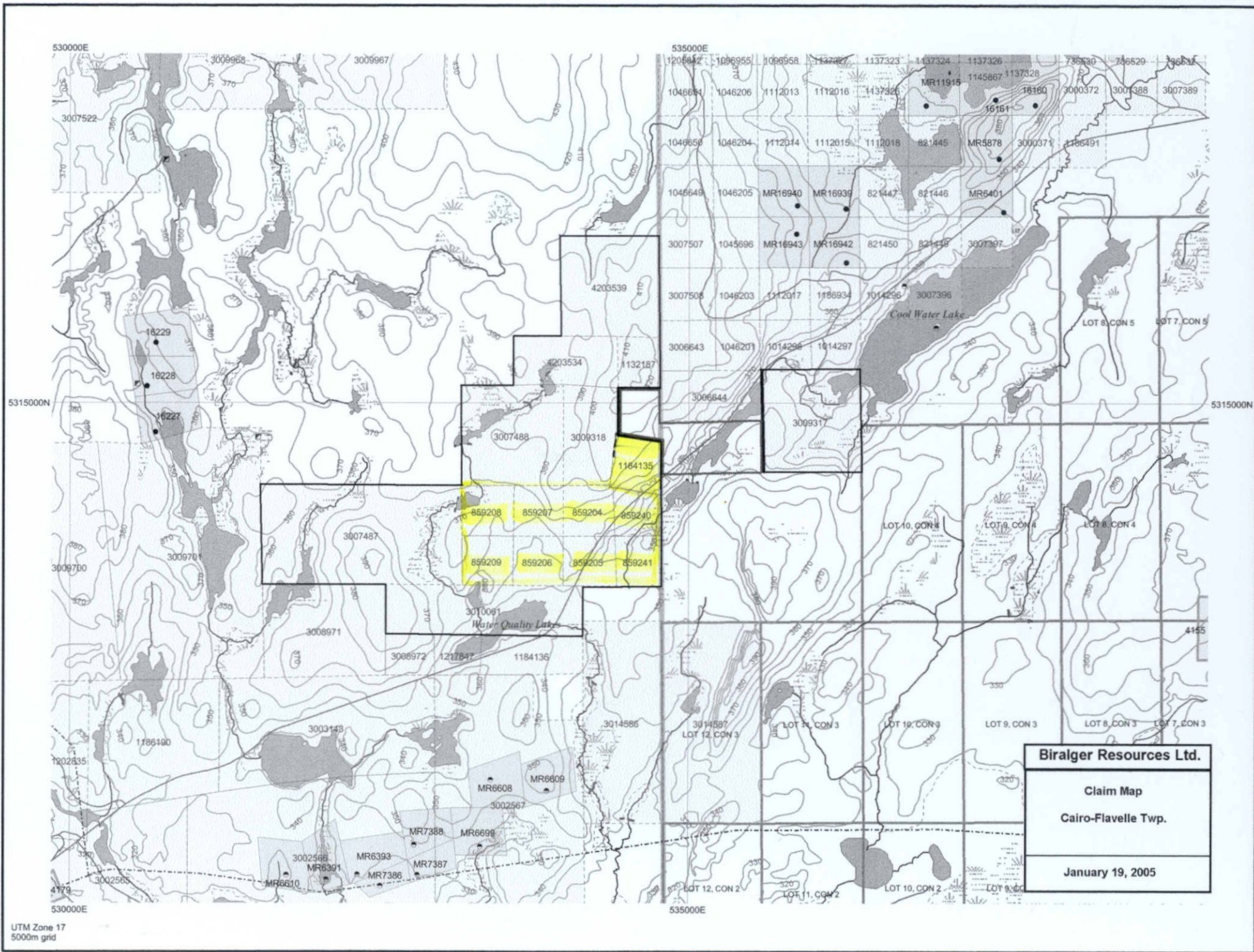
A program of stripping, detailed geological mapping and geological reconnaissance was carried out on claim 1184135 located along the eastern boundary of Cairo Township. The southeast corner of the claim crosses Highway 66 at a point 10 km east of Matachewan and on the paved road leading to Highway 11 at Kenogami.

The stripping program consisted of stripping four areas near the northeast corner of the claim over an area measuring 150m x 200m.

Property Description

The property consists of 19 mining claims (40 units) located along the eastern border of Cairo township and the western border of Flavelle township. The claim numbers are listed in Appendix 'A'. Highway # 66 crosses diagonally across the central portion of the property in a northeasterly direction. The community of Matachewan is located 10 km west of the property along highway #66 and #65. The Town of Kirkland Lake is located 50 km east of the property.

Logging activity has been ongoing on the property and surrounding area since 1984, establishing a network of logging roads throughout the area and the property. This logging activity has created numerous outcrop exposures. Prospecting activity has greatly facilitated the discovery of numerous mineralized outcrops on the property.



Biralger Resources Ltd.

**Claim Map
Cairo-Flavelle Twp.**

January 19, 2005

Regional and Local Geology

The property is located within the southwest portion of the Abitibi metavolcanic Belt and more particularly within the Kirkland-Larder Lake suite of rocks hosting many of the gold deposits on the Kirkland Lake Gold Camp.

The past and present producing gold mines are mainly contained within sheared and altered syenite, syenite porphyry, trachyte syenite, mafic volcanic flows and tuff and Timiskaming sedimentary rocks.

The main structural feature in the Matachewan area and on the property is the westerly extension of the Cadillac-Larder Lake Fault Zone.

The geology of the property is as follows:

1 - The oldest volcanic and sedimentary rocks are concentrated in the southeast portion of the property. The volcanic rock consists of massive and pillowed flows and tuff. The older sedimentary rocks are Timiskaming of age and consists mostly conglomerate with minor arkose and possibly shale.

The above rock types are intruded by the Cairo Stock which consists of syenite, syenite porphyry, hornblende syenite and possibly augite syenite.

The above rock types have subsequently been intruded by late mafic diabase dykes of otherwise known as the Matachewan Diabase Dykes.

These suites of rocks were then capped with late flat lying Proterozoic (Cobalt Sediments). These sediments consist of mainly conglomerates, arkose and slate. A small outlier of this rock type

covers the volcanic-sedimentary-syenite suite of rocks in the central and southeast corner of the property.

Description of Stripping Areas

Stripping Area 'A'

This is the longest of the stripping areas measuring 115 metres long in a northerly direction and varying in width from 3 metres to 20 metres. The northern tip of this stripped area is located 100 metre south and 60 metres west of post # 1 of claim 1184135.

Stripping in the northern 25 metre portion of this stripped area has exposed mostly massive and partially sheared, mineralized and carbonatized syenite porphyry. The carbonatization is of the Fe carbonate type and is mineralized with chalcopyrite, pyrite and magnetite. The next 50 metre section, from 25m N to 75m N consists of inter layered bands of altered syenite porphyry, carbonatized mafic volcanic pillowed flows, and tuff with minor. There is several wide section of quartz stock work veining. Both the quartz veins and the host syenite and volcanic rocks are mineralized with chalcopyrite, bornite, pyrite and magnetite. These minerals are much more abundant throughout this section compared with the previous section.

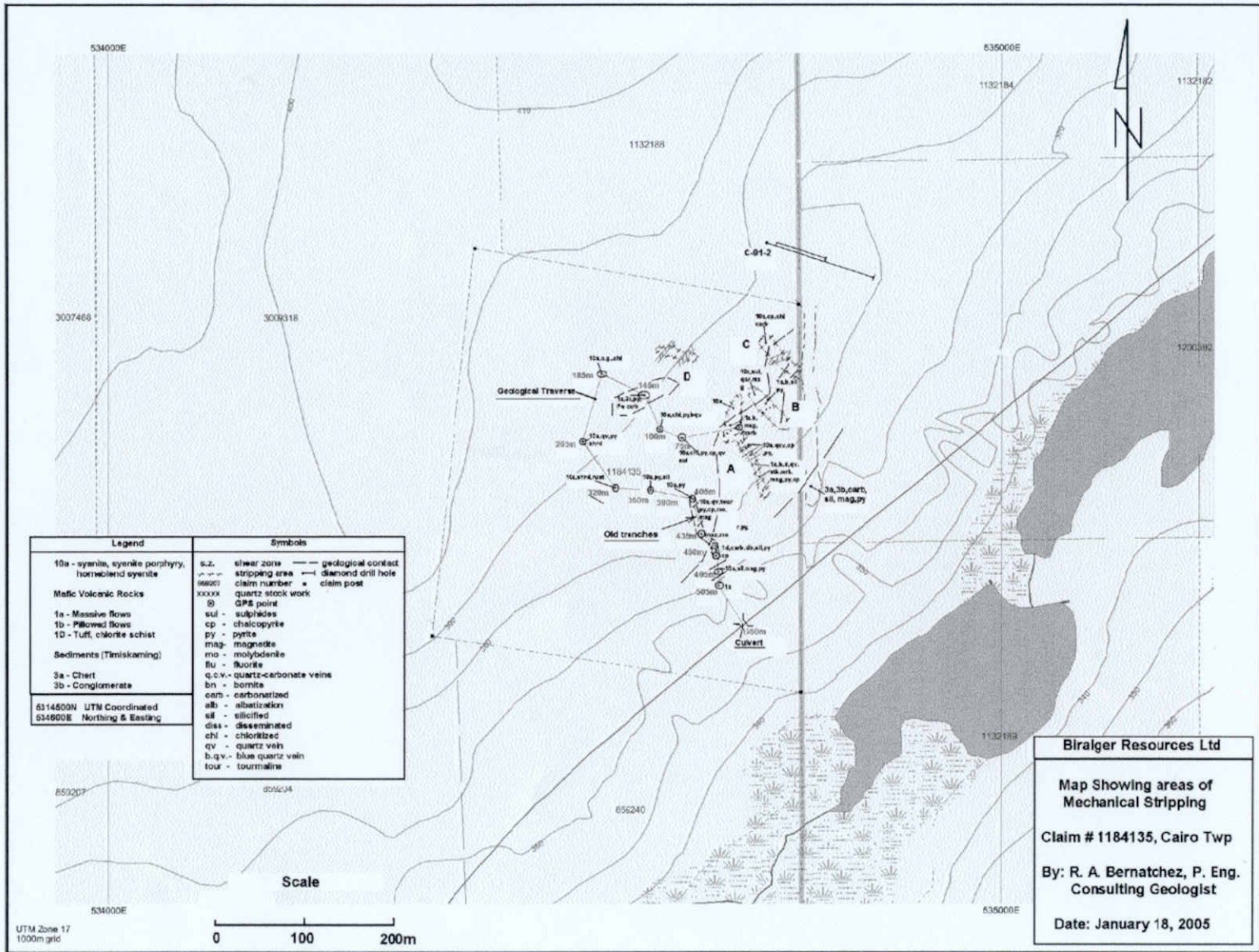




Figure 1 - Looking north on stripping area 'A'

Stripping Area 'B'

The area stripped is located about 20 metres east of the northern portion of Area 'A' and measures about 50 long in a northwesterly direction and is up to 14 meters wide near the centre.

A 20 meter section of syenite was uncovered near the north portion of the area. The porphyry was also mineralized with pyrite, chalcopyrite, and magnetite. The rocks exposed in the remaining portion, that is, a narrow section on the north side of the porphyry and the south side of the porphyry consists of altered massive and pillowed mafic volcanic flows and tuff.



Figure 2 - Looking southeast on stripping area 'B'

Stripping Area 'C'

This stripped area measures about 64 metres long and strikes in a northwesterly direction and is about 12 to 14 metres wide. The southern point of this stripping is located 75 metres south from post #1 of claim 1184135. At this point it joins with previous stripping carried out along the Cairo-Flavelle Township common boundary line.

The northern 14 metre portion of this stripping has exposed altered and sheared syenite rocks. These rocks are mineralized with chalcopyrite, pyrite, malachite, bornite and magnetite. The remaining 50 metres to the southeast consists of sheared and altered massive mafic volcanic rocks. The rocks in this section are also mineralized with magnetite, chalcopyrite and pyrite.



Figure 3 – Looking southeast on stripping area ‘C’

Stripping Area 'D'

A fourth area was stripped located 130 metre west and 75 metres south of post #1 of claim 1184135. The stripping area measures about 45 metres long and strikes in a west northwest direction and has a maximum width of 10 metres.

The rocks exposed in this stripping area consisted of syenite porphyry. It was also mineralized with chalcopyrite, pyrite, magnetite, bornite with minor fluorite and hematite.

Geological Traverse

A 560 metre, GPS controlled geological traverse was carried out west southwest of the stripping areas (see map above).

The traverse is recorded and plotted on the accompanying map.

The main rock types encountered along this traverse consisted of outcrops of mainly syenite porphyry with minor sections of massive mafic volcanic rocks, cherty tuff and sediments (conglomerates)

Mineralization

The mineralization observed both in the syenite porphyry and in the volcanic rocks occurs along fracture, as disseminated grains and with quartz and quartz-calcite veinlets. The sulphide content is variable but pervasive throughout both rock types.

The sulphides present varied from a 0.5 % up to about 20% in local areas.

Molybdenite was noted at a distance 450 metres along the traverse (see map). The molybdenite was found as disseminated grains in altered and mineralized and quartz veined syenite. The quartz veins contained tourmaline. The syenite was also mineralized with disseminated pyrite and magnetite. This zone of mineralization was also found near the syenite-volcanic rock contact that straddles the southeast contact of the Cairo Stock located 50 metre or more north of the paved road.

An old trench was discovered on this traverse at distance 405m to 460m. There is no record of this work in the assessment files in Kirkland Lake, On.

Results

The stripping program was very successful in proving the continuity of the mineralized system previously identified by Biralger resources Ltd. and others.

The zone of mineralization straddles the southeast contact of the syenite-volcanic contact located along the southeast contact of the Cairo Stock.

The areas of maximum mineralization of chalcopyrite, bornite, magnetite, pyrite and minor amounts of molybdenite and fluorite are located near this contact. The zone of maximum alteration is also located along this contact. The sulphides listed above also contain gold and silver values.

This zone of shearing, alteration and mineralization has been traced over a width of over 500 metres. A hole drilled by Inmet

Mining on the adjacent claim to the east has confirmed this mineralized zone further south for another 1000m.

This 1500 metre wide mineralized system is contained within the Cadillac-Larder Lake Fault System. This fault system has an east west strike length of over 260 kilometres, from Val d'Or, Quebec to Matachewan, Ontario.

Recommendations

Further stripping is recommended on this claim and to the west to identify the westerly extension of the mineralized system. The mineralized zone straddles the syenite-volcanic contact and is identifiable via the magnetic response along this contact. This contact can be followed by using the ground and airborne magnetic survey conducted previously by Biralger Resources Ltd.

Trenching and rotary drill holes were carried out on the western portion of claim 1184135 by Falcanbridge Ltd. in 1974-75. Assays of the drill chips is not available, however it has been reported that 500,000 tons grading 0.5% copper and 0.05 oz gold/ton was delineated in this drilling.

The stripping areas should be washed and sampled.


Caution should be taken when evaluating the results of any channel or pit sampling near surface. It can be shown that the economic minerals have been partially leached out of the rocks down to a depth of 4 to 8 metres. This was proven the case in DDH C-91-2 located near the northeast corner of claim 1184135.

Recommended Exploration Program

Stripping	\$ 20,000.00
Supervision 23 days @ 350.00/day.....	\$ 8,050.00
Detail Geological Mapping, 8 days @ 350/day.....	\$ 2,800.00
Channel Sampling and Assays	
15 days@ \$350.00 /day	\$ 5,250.00
Food and accommodations	\$ 1,000.00
Transportation	<u>\$ 5,000.00</u>
<u>Total cost</u>	<u>\$ 42,100.00</u>

Summary Of Costs

Stripping Cost	\$ 3,000.00
Mileage 5696 km @ \$0.40/km	\$ 2,278.40
Work on property 6 days @ \$ 250.00/day.....	\$ 1,500.00
Work days on report 3 days @ \$ 250.00.....	\$ 750.00
Food	\$ 168.31
Total Cost	\$ 7,696.71


Raymond A. Bernatchez, P. Eng.
Consulting Geologist

Appendix 'A'

Mining Lands - Mining Claims Client Report

Larder Lake - Division 80

CLIENT: 108485 - BIRALGER RESOURCES LTD.

<u>TOWNSHIP / AREA</u>	<u>Claim Number</u>	<u>Recording Date</u>	<u>Claim Due Date</u>	<u>Status</u>	<u>Percent Option</u>	<u>Work Required</u>	<u>Total Applied</u>	<u>Total Reserve</u>	<u>Claim Bank</u>
CAIRO	L 1132187	1990-MAY-09	2005-MAY-09	A	100.00 %	400	5600	0	0
CAIRO	L 1184135	2003-NOV-07	2005-NOV-07	A	100.00 %	400	0	0	0
CAIRO	L 1184136	2003-NOV-07	2005-NOV-07	A	100.00 %	800	0	0	0
CAIRO	L 3007487	2003-NOV-07	2005-NOV-07	A	100.00 %	3200	0	0	0
CAIRO	L 3007488	2003-NOV-07	2005-NOV-07	A	100.00 %	1600	0	0	0
CAIRO	L 3009318	2003-JUN-23	2005-JUN-23	A	100.00 %	800	0	0	0
CAIRO	L 859204	1985-OCT-25	2005-JAN-25	A	100.00 %	400	7200	0	0
CAIRO	L 859205	1985-OCT-25	2005-JAN-25	A	100.00 %	400	7200	0	0
CAIRO	L 859206	1985-OCT-25	2005-JAN-25	A	100.00 %	400	7200	0	0
CAIRO	L 859207	1985-OCT-25	2005-JAN-25	A	100.00 %	400	7200	0	0
CAIRO	L 859208	1985-OCT-25	2005-JAN-25	A	100.00 %	400	7200	0	0
CAIRO	L 859209	1985-OCT-25	2005-JAN-25	A	100.00 %	400	7200	0	0
CAIRO	L 859240	1985-OCT-21	2005-JAN-25	A	100.00 %	400	7200	0	0
CAIRO	L 859241	1985-OCT-21	2005-JAN-25	A	100.00 %	400	7200	0	0
FLAVELLE	L 3009317	2003-JUN-23	2005-JUN-23	A	100.00 %	1600	0	0	0

| [Back](#) | [Main Menu](#) | [Mining Lands](#) |

© Copyright 2001 Queen's Printer for Ontario

This information is provided as a public service, but we cannot guarantee that the information is current or accurate. Readers should verify the information before acting on it.

Date: 2005-FEB-04

GEOSCIENCE ASSESSMENT OFFICE
933 RAMSEY LAKE ROAD, 6th FLOOR
SUDBURY, ONTARIO
P3E 6B5

RAYMOND ALBERT BERNATCHEZ
BIRALGER RESOURCES LTD.
1326 WILLOW AVENUE
ATIKOKAN, ONTARIO
P0T 1C0 CANADA

Tel: (888) 415-9845
Fax: (877) 670-1555

Submission Number: 2.29124
Transaction Number(s): W0580.00117

Dear Sir or Madam

Subject: Approval of Assessment Work

We have approved your Assessment Work Submission with the above noted Transaction Number(s). The attached Work Report Summary indicates the results of the approval.

At the discretion of the Ministry, the assessment work performed on the mining lands noted in this work report may be subject to inspection and/or investigation at any time.

Note, there were Assessment Regulation changes that took affect in December 2004. I have included a document outlining the major changes to the Regulations. I encourage you to visit our web site www.gov.on.ca/mndm/mines/lands or the e-laws site for a complete listing of all changes that took affect December 2004 regarding assessment work. Please note, subsequent submissions of this nature will be required to meet the Assessment Work Regulations that took affect in December 2004.

If you have any question regarding this correspondence, please contact STEVEN BENETEAU by email at steve.beneteau@ndm.gov.on.ca or by phone at (705) 670-5855.

Yours Sincerely,



Ron C. Gashinski
Senior Manager, Mining Lands Section

Cc: Resident Geologist

Biralger Resources Ltd.
(Claim Holder)

Assessment File Library

Biralger Resources Ltd.
(Assessment Office)

Date / Time of Issue: Tue Feb 22 09:48:58 EST 2005

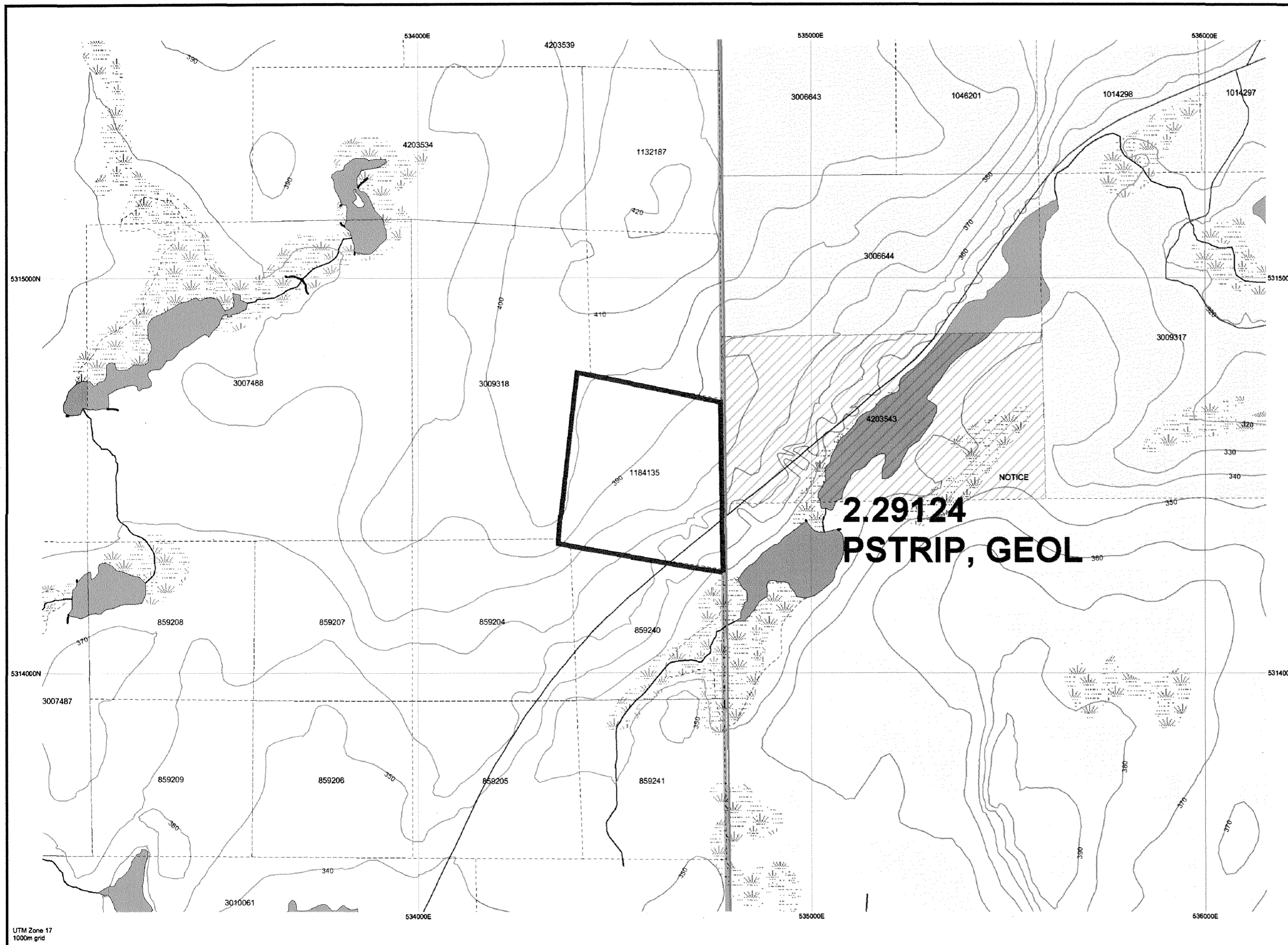
TOWNSHIP / AREA
CAIRO

PLAN
G-3209

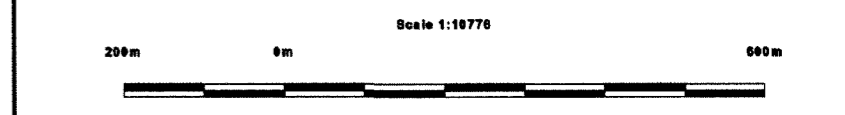
ADMINISTRATIVE DISTRICTS / DIVISIONS

Mining Division
Land Titles/Registry Division
Ministry of Natural Resources District

Larder Lake
TIMISKAMING
KIRKLAND LAKE



TOPOGRAPHIC		Land Tenure	
	Administrative Boundaries		Freehold Patent
	Township		Surface And Mining Rights
	Concession, Lot		Surface Rights Only
	Provincial Park		Mining Rights Only
	Indian Reserve	Leasehold Patent	
	Cliff, Pit & Pile		Surface And Mining Rights
	Contour		Surface Rights Only
	Mine Shafts		Mining Rights Only
	Mine Headframe	Licence of Occupation	
	Railway		Uses Not Specified
	Road		Surface And Mining Rights
	Trail		Surface Rights Only
	Natural Gas Pipeline		Mining Rights Only
	Utilities		Land Use Permit
	Tower		Order in Council (Not open for staking)
			Water Power Lease Agreement
			Mining Claim
			Filed Only Mining Claims
		LAND TENURE WITHDRAWALS	
			Area Withdrawn from Disposition
		Mining Acts Withdrawal Types	
			Surface And Mining Rights Withdrawn
			Surface Rights Only Withdrawn
			Mining Rights Only Withdrawn
		Order in Council Withdrawal Types	
			Surface And Mining Rights Withdrawn
			Surface Rights Only Withdrawn
			Mining Rights Only Withdrawn
			IMPORTANT NOTICES



LAND TENURE WITHDRAWAL DESCRIPTIONS

Identifier	Type	Date	Description
NOTICE	Wsm	Jan 1, 2001	PLEASE NOTE: The LOTS and CONCESSIONS are not correctly illus Parts of this township have been "ANNULLED" and other parts remain "SUBDIVIDED". Contact the Provincial Recording Office before staking.

Those wishing to stake mining claims should consult with the Provincial Mining Recorders' Office of the Ministry of Northern Development and Mines for additional information. Additional information may also be obtained through the

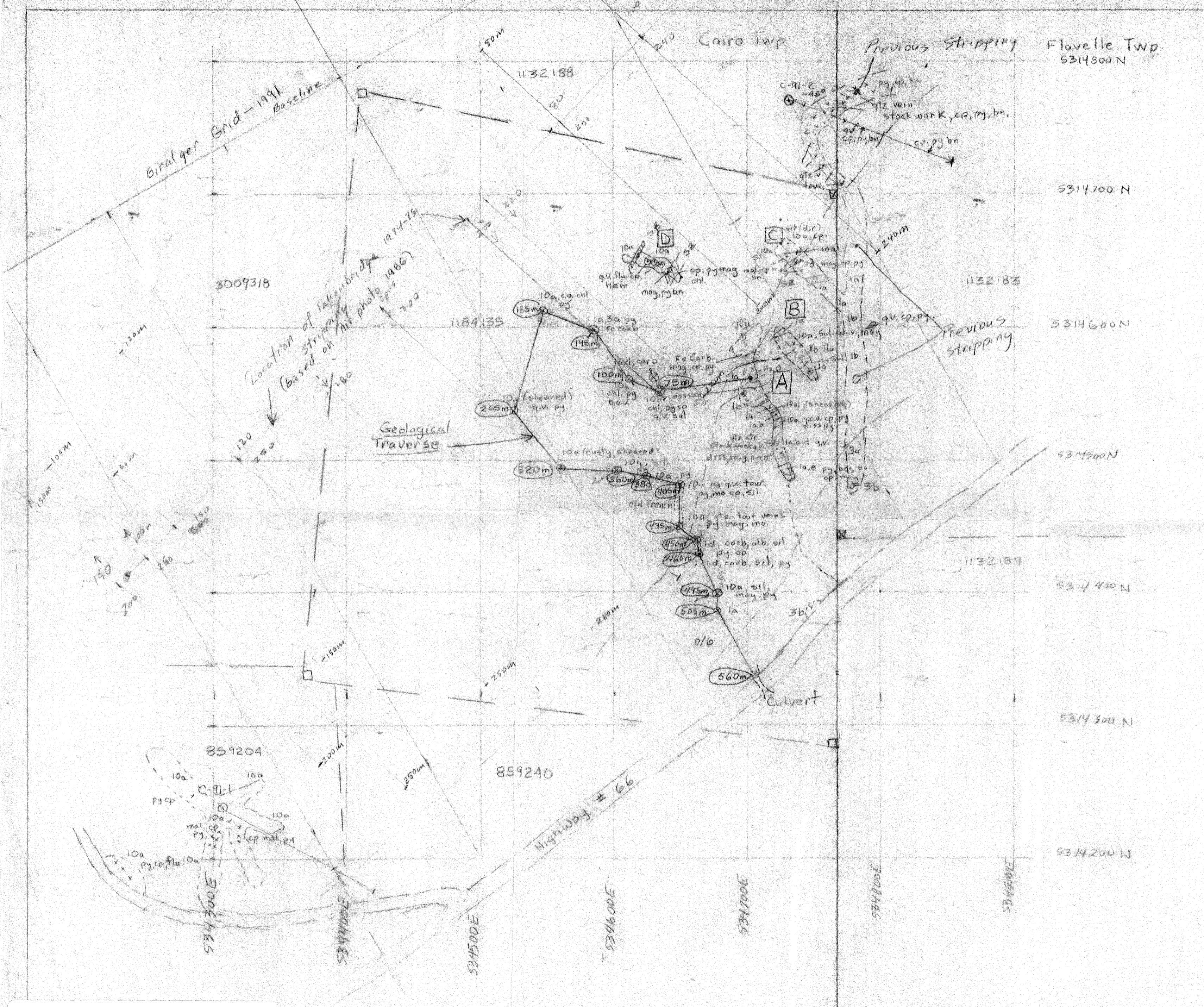
General Information and Limitations

Contact Information:
Provincial Mining Recorders' Office
Willak Green Miller Centre 933 Ramsey Lake Road
Sudbury ON P3E 6B5
Home Page: www.mndm.gov.on.ca/MNDM/MINES/LANDS/mismnpgc.htm

Toll Free: 1 (888) 415-9845 ext 5777
Tel: 1 (877) 670-1444
Fax: 1 (877) 670-1444
Map Datum: NAD 83
Projection: UTM (5 degree)
Topographic Data Source: Land Information Ontario
Mining Land Tenure Source: Provincial Mining Recorders' Office

This map may not show unregistered land tenure and interests in land including certain patents, leases, easements, right of ways, flooding rights, licences, or other forms of disposition of rights and interest from the Crown. Also certain land tenure and land uses that restrict or prohibit free entry to stake mining claims may not be illustrated.

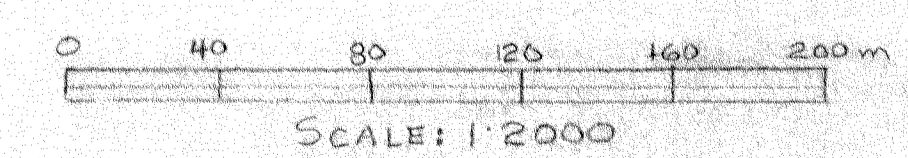




LEGEND

- 10a. - Syenite Porphyry, Hornblende Syenite
- MAFIC VOLCANICS**
 - 1a - Massive Flow
 - 1b - Pillow Flow
 - 1d - Tuff, Chlorite schist
- SEDIMENTS (Chemical)**
 - 3a - Chert
 - 3b - Conglomerate
- SYMBOLS**
 - sz Shear Zone
 - Geological Contact
 - B Stripping Areas (2004)
 - C-91-20 1991 Diamond Drill Hole No. and Dip.
 - 859240 Claim line and number
 - Claim Post (Known, Assumed)
 - Quartz Vein Stockwork
 - GPS traverse Point
 - sul - sulphides
 - cp - chalcopyrite
 - py - pyrite
 - mag - magnetite
 - mo - molybdenite
 - flu - fluorite
 - qcv - quartz calcite veins
 - bn - bornite
 - carb - carbonization
 - alb - albitization
 - sil - silicification
 - diss - disseminated sulphides
 - chl - chlorite
 - q.v. - quartz vein
 - bqv - blue quartz vein
 - tour - tourmaline
- 5314500N 5314600E UTM Coordinates Northing and Easting

2.29124



BIRALGER RESOURCES LTD	
CAIRO TWP PROPERTY	
2004 MECHANICAL STRIPPING	
AND	
Geological Mapping	
DRAWN BY: R.A. Bernatchez, P.Eng.	
Date May & Oct 2004	Scale: 1:2000