

2.2453

RECEIVED

JUL 18 1977



41P15NE8245 2.2453 POWELL

CG-121

010

REPORT ON
GEOPHYSICAL AND GEOLOGICAL SURVEYS
WEST BLOCK

PROPERTY OF DR. F. YANDEL, JR.

POWELL TOWNSHIP

MATACHEWAN GOLD MINING AREA

NORTHERN ONTARIO

July 11th, 1977

By: S.S. Szetu, Ph.D., P.Eng.



41P15NE8245 2.2453 POWELL

010C

C O N T E N T S

	<u>Page</u>
Introduction.....	1
Surveyed Area.....	1
Location and Access.....	2
Previous Work and Mineral Occurrences.....	2
General Geology.....	4
Airborne Geophysical Data.....	4
Geophysical Survey Methods and Instruments.....	5
Magnetic and Electromagnetic Survey Results.....	6
Geological Survey.....	7
Interpretation.....	11
Summary and Conclusions.....	13
Recommendations.....	15

* * * * *

Plans: (All in a scale 1" = 200')

Plan No. 1: Magnetic Survey Data

Plan No. 2: Electromagnetic Survey Data

Plan No. 3: Geological Survey Data

(with interpretation)

INTRODUCTION

In the latter part of May and the early part of June, 1977, a program of geophysical and geological surveys was conducted by Cana Exploration Consultants Limited on a block of six claims located at the southeast part of Powell Township, Matachewan Gold Mining Area, Northern Ontario. These claims constitute the west claim block of a property owned by Dr. Florian Yandel, Jr.

The purposes of the program were to check mineral possibilities of these claims and to locate and check a gold occurrence reported by previous owner, Culver Gold Mines Limited.

Survey results are depicted on three plans, plotted to a scale 1" = 200', accompanying this report.

SURVEYED AREA

The six claims covered by the surveys are numbered L-449400, L-449399, L-449387, L-449386, L-449384 and L-449383.

These were staked to cover former patented claims held by Culver Gold Mines Limited which came open for staking on June 1, 1975. However, it was observed in the field that certain parts of the claims are not exactly as shown on the claim map, although the gold showing as noted on an old map by Culver is covered by this new staking, and the northeast corner of this block does tie onto the southwest corner of the east block of claims also held by Dr. Yandel.

LOCATION AND ACCESS

The claim block is located about three miles northwest of the Village of Matachewan, District of Timiskaming, Larder Lake Mining Division, Ontario. Matachewan lies about 40 miles west-southwest of Kirkland Lake and is accessible by Highway No. 66.

From Matachewan, an all weather secondary Highway 566 traverses the west part of the property. An old tractor road leads from Highway 566, just north of the base line, to the east block of claims. This tractor road is partly overgrown by bushes, but the road bed is in good condition. Red ribbons were used to mark this road across the claim block. It requires an estimated two days work by two cutters to re-open this road.

PREVIOUS DEVELOPMENT AND MINERAL OCCURRENCES

Readers are referred to a report by J. C. Honsberger, P. Eng., dated June 12, 1975 for previous development by Culver Gold Mines Limited on the claim block. In his report he quoted a Progress Report dated November 13, 1945, by G. R. McLaren, M.E. The following statements are interesting:

(a) On claim 6170 (now claim L-449386), on what we believe to be the extension of the Morrison break, an old pit was deepened which showed values of 0.18 ounces across three feet and 0.2 ounces across three feet.

(b) On claim 13094 (MR-37455, adjoining to the west of L-449387) close to the south boundary, there is a quartz vein 12 feet wide showing very heavy pyrite, chalcopryrite, zinc blends and galena, but the gold values are low.

(c) The claims have been prospected and a very large area of porphyry and conglomerate has been outlined. These show some gold values and in places at the contacts, commercial values have been obtained over narrow widths.

Mr. Honsberger also enclosed a copy of an old property map of 1946 which showed some geology of the claim group and the location of the above-said old pit, plus the indication of an old hole drilled to the immediate west of this pit on now claim L-449386.

The copper-bearing quartz vein of (b) is apparently one of the many mineralized occurrences at Stancop Mines Ltd. (Ethel Copper property) examined by H. L. Lovell of the Ontario Department of Mines in 1964, at about a half claim to the west of the northwest corner of claim L-449386. A selected sample taken by him in a silicified arkose near a diabase dike assayed 0.52 ounces of gold and 1.08 ounces of silver per ton. Mineralized quartz stringers in nearby syenite porphyry dikes, however, assayed only traces of gold and silver (Geological Report 51, 1967, O.D.M.). Extensive surface work was carried out on this property in recent years.

As the claim block is only about 1600 feet north of the former open pit mine of Young-Davidson Mines Ltd. and about 2600 feet northwest of the No. 1 shaft of former gold producer Matachewan Consolidated Mines Ltd., up-to-date accounts of these former producers by government geologist, Mr. J. B. Gordon, were also given in Mr. Honsberger's report.

GENERAL GEOLOGY

Geological Map 2110, O.D.M., by H. L. Lovell, 1964, showed the most up-dated geology of Powell and Cairo Townships. According to this map the area of the claim block is mostly underlain by Timiskaming sediments, except at the north boundary which is underlain by syenitic and porphyritic members of Algoman silicic rocks, intruding sediments.

These silicic rocks are shown as forming an elongated intrusive, striking east-westerly, but has a sharp southwesterly turn and an enlargement at the northwest corner of the claim block.

The intrusive and the sediments are cut by north-south Matachewan diabase dikes, one of which is outcropping along the north boundary and another at the south boundary and inferred as running across the claim block.

Beddings of the sediments as noted to the south of the property are, in general, east-west. However, northwesterly shearing was noted to the immediate west of the claim block at the showing-area of Stancop Mines Ltd. Northeasterly shearings are prominent at the east block as noted by the writer in 1975.

AIRBORNE GEOPHYSICAL DATA

Aeromagnetic data on G.S.C. Map 384G (1956) and O.D.M. Preliminary Map No. 1022 (1975), showed that the surveyed area is located within a relatively magnetic low area with a weak magnetic anomaly located to the immediate west and considerably

higher readings toward north which then graded into the south rim of a large and strong aeromagnetic anomaly outlined over Keewatin volcanics with some mafic intrusives.

These aeromagnetic data showed that the general background readings on this west block should be considerably lower than that of the east block of claims. The said weak magnetic anomaly located to the immediate west is outlined mainly over overburden, but has the same order as weak anomalies outlined over syenitic rocks located at Young Davidson Mines, a short distance to the south.

Preliminary Map No. 1022 showed no airborne electromagnetic anomalies at the neighbouring former gold producers nor any anomaly on the claim block area herein concerned. The airborne survey was carried out in 1974 by using a Questor Mark VI INPUT system designed to detect massive conductive bodies.

GEOPHYSICAL SURVEY METHODS AND INSTRUMENTS

A picket line grid was cut and chained at 400 foot intervals, north-south to cover the six claims, turned off from a base line established across the central part of the claim block. All station readings were taken at 50 foot intervals along north-south picket lines.

A Fluxgate MF-1 magnetometer was used for the magnetic survey with control stations established along the base line. The instrument was adjusted to avoid negative readings at the control stations for convenience of processing. However, these

readings have not been tied onto the readings obtained by a previous survey conducted on the east block of claims.

The VLF electromagnetic survey was carried out by using a Ronka EM-16 instrument with transmitter station NAA, operator facing north.

MAGNETIC AND ELECTROMAGNETIC SURVEY RESULTS

Results of the magnetic survey, with contours at 200-gamma intervals, are given on Plan No. 1 accompanying this report.

The results depicted an outstanding anomalous zone along Line 16E, north of the base line. This anomalous zone indicates a north-south basic (diabase) dike. The magnetic grains on this anomaly are from about 1200 gammas to 2200 gammas. Background readings obtained over outcrops of sediments are in the order of 800 to 1000 gammas. A small magnetic grain located at the south end of L24E is apparently indicating another diabase dike. However, it is not sure if it strikes west-northwesterly toward indications on L16E, or northeasterly toward weak indications on L28E, north.

Readings between 1000 to 1200 gammas are not readily understood. An outcrop of syenite porphyry was observed within one of these weak magnetic zones located between L0+00 and L8E, just south of the base line to indicate the occurrence of such a dike. No outcrop was observed directly under similar but less prominent anomalies on the northwest part of the claim block within scattered outcrops of sediments. Minor occurrences of

syenite porphyry and/or its associated rocks, such as mafic syenite and lamprophyre, are possible.

The readings below 600 gammas are interesting as silicified structures may register magnetic lows if not due to dipole effects. However, they are too few and isolated.

Results of the electromagnetic survey are depicted on Plan No. 2 accompanying this report.

The survey encountered no good VLF conductors on the claim block. Although the power line which runs across the west part had hindered the electromagnetic survey there, the data do not indicate the occurrence of any sizeable conductive body within the area disturbed by the power line.

The survey, however, encountered several weak to marginal VLF conductors, all associated with no appreciable out-of-phase changes. An indication located at L16E, 75 feet south, is apparently due to magnetic and topographic effects at the south end of a diabase dike. Most other indications are tentatively inferred as due to slightly conductive minor faults or shears within sediments, although faults or shears may not all respond to VLF detection.

GEOLOGICAL SURVEY

Topography, outcrop geology and trenches examined by the writer are depicted on Plan No. 3 accompanying this report. The survey was hindered by the scarcity of outcrops, second growths, and sand and water in many of the old trenches.

Furthermore, there are numerous boulders of various sizes; the larger ones may resemble small outcrops in places.

The rock types and formations observed are listed as follows:

Overburden:

Swamp and stream deposits (recent); sand, gravel, clay (Pleistocene)

- Unconformity -

Precambrian (Archean):

Mafic Intrusive Rocks (Matachewan) -
diabase, gabbro-diabase

- Intrusive Contact -

Silicic Intrusive Rocks (Algoman) -

syenite, syenite-porphyr

- Intrusive Contact -

Sedimentary Rocks (Timiskaming) -

argillite and graywacke, arkose, conglomerate

The diabase is fine to medium grained. The gabbro-diabase is medium grained and has slightly grey to greenish feldspars and minor pyrrhotite.

The syenite observed is a slightly pinkish medium to coarse grained feldspathic rock with some subhedral white plagioclase. The syenite porphyry is slightly pinkish grey with phenocrysts of pink feldspar, up to 3/8" x 1/4" in size, in a greyish groundmass of medium to coarse grained syenite.

The argillite is a light grey dolomitic looking rock which grades into or is interbedded with greywacke but without noticeable beddings. This formation is commonly carrying disseminating fine pyrite and, in places, fine streaks of pyrite along minor shearing.

The arkosic rock, located to the immediate west of the southwest corner of Claim 449386, is a grey colored slightly sheared and altered sediment with some white spotty calcite and probable altered plagioclase. It resembles an arenite more than arkose. As the outcrop area is noted as arkose on geological Map 2110, O.D.M., the rock is classified as arkose.

The outcrops of arkose, located to the north of the base line at the northwest part of the claim block, are light grey medium grained rocks which resemble syenite. The crystals, however, are somewhat rounded in places similar to arkosic matrix found at an outcrop of conglomerate nearby. As two of these outcrops are located in an area with small weak magnetic anomalies, a more detailed study and microscopic examination may be required for more definite classification. The above-said government geological map classified the area as underlain by sediments.

Widespread pyrite mineralization, in dissemination or in fine streaks, occurs in the sediments. The streaks are not uncommonly associated with some carbonates but no appreciable silicification has been noted, although a six inch wide quartz vein is noted at the southwest part of Claim 449386, striking

east into a swamp, and a few quartz stringers were located along a three-foot shear zone in a five-foot deep rock pit at 250' east, 50' south of the base line. The said quartz vein is apparently barren and assayed nil in gold. A cross section sample of the said three-foot shear zone with some quartz stringers assayed only a trace in gold. It should be noted, however, that the quartz stringers and part of the sheared sediments are vugy and covered with a dull dark brown coating. They carried a few specks of pyrite. No chalcopyrite was noted on any outcrops of the claim block.

The above-said shear zone has apparently been traced by a long trench of over 110 feet with two large pits to the west of the above-said pit. These pits are deep and filled with water. One of these pits, located about 75 feet to the west of the above-said rock pit, examined by the writer corresponds in location with the mineralized pit shown on the 1946 property map of Culver Gold Mines Limited. This is apparently the old pit described by G. R. McLaren, M.E., in 1945 and which was deepened along the "Morrison break" and showed values of 0.18 ounces across three feet, and 0.2 ounces across three feet.

The above-said old map also plotted the location of a drill hole to the immediate west of this water filled pit. This drill location was not located in the field by the writer. However, there is a north-northwesterly trench located to the immediate north of this old water filled pit with its north end

located 150' east of the base line. There are three E drill rods located at this north end of the trench indicating three short holes with 45° , 55° and 80° dips to the south. Scattered outcrops at this trench are mineralized with disseminating pyrite.

It should be noted here that immediately to the south of the above-said shear zone with the workings, the writer found outcrops of syenite and syenite porphyry which are not noted by previous workers. A contact zone between the sheared sediments and the syenite porphyry is weathered whitish. The location of the syenitic rocks corresponds closely with a weak east-west anomaly outlined by the magnetometer survey.

The 1946 property map of Culver Gold Mines Ltd. also indicated the occurrence of an east-westerly strong break at the north part of now Claim L-449387. This break corresponds in location with a northeasterly weak shear zone tested by an old long trench located 1000 feet north, L8E. Some local pyrite mineralization was observed by the writer.

INTERPRETATION

Inferred geology of the claim block, as depicted on Plan No. 3, is based on observed outcrop geology in correlation with ground geophysical data and general geology of the boundary area as shown on Geological Map 2110 by H. L. Lovell and assistants, O.D.M., 1964.

In short, the claim block is mainly underlain by a series of Timiskaming sediments which has widespread minor pyrite mineralization in outcrops observed at the northwest and west parts of the property. The mineralization could be associated with syenitic intrusives known to occur along the north boundary and to the northwest.

The heavily tested mineralization and gold occurrence located in Claim L-449386 appears to be related to a previously unknown syenite-syenite porphyry intrusive which occurs along a shear, believed by previous workers to be the "Morrison break". This intrusive is inferred as a dike which appears to be open and larger toward west, but narrower and disappearing at the central part of Claim L-449383. The said break is inferred as following the north boundary of this dike but continuing eastward across the central part of the claim block. The location suggests that the observed shear may not be the same break said to be located at the east block of claims.

There could be other small syenitic bodies located to the north of the base line and south of the larger syenitic intrusive located along the north boundary, striking toward the gold occurrence at the east block.

A north-southerly striking diabase dike is inferred as running across the central part of the claim block. The size of this dike is unknown and its central section is tentatively inferred as turning southeast and cut by two possible north-easterly faults or shears. An outcrop of diabase located

300 feet to the east of the claim block is apparently the south extension of an inferred diabase dike located at the west part of the east block covered by a previous survey.

SUMMARY AND CONCLUSIONS

- (1) The claim block is located to the immediate north of two former gold producers (Young Davidson and Matachewan Consolidated), adjoining to the east of an interesting copper-gold occurrence (Stancop), which was under extensive surface testing within the last few years, and to the southwest of a gold occurrence located at the adjoining east block of claims held also by Dr. Yandel, Jr.
 - (2) Old work by previous owner, Culver Gold Mines Ltd., recorded the occurrence of 0.18 to 0.20 ounces gold per ton across 3 feet in a deep pit along a break (Morrison break) believed to be part of the same gold-bearing structure located on the east block of claims.
 - (3) However, the gold showing has apparently been tested by one shallow drill hole by Culver Gold Mines Ltd. Three other short holes by an unknown person were found in the same area. The results of these drill holes are unknown.
- The deep pit which uncovered the gold mineralization is now filled with water to obscure examination. A

sample across a three foot section in a rock pit along the same structure assayed a trace in gold. Geophysical data indicated that the break strikes easterly across the claim block to the south of the east block - suggesting a possibility that it is not the same break located at the gold showing at the east block.

- (4) Nevertheless, the said break appears to be permanent with vugy sheared sediments and vugy quartz stringers - indicating the probability of having better values at depth. A newly found syenite porphyry dike follows this break for a considerable indicated distance on the claim block. This intrusive is the likely source of the mineralization.
- (5) The geophysical surveys encountered no anomalous conditions which warrant testing. The data obtained were used to correlate with outcrop geology to depict a picture which is given on Plan No. 3. As the property is largely covered by overburden, this inferred geology may serve to guide further exploration for gold.

The recorded finding of gold values on the claim block is believed to be true. The shallow drilling at one local section of a badly weathered long shear zone is inadequate. Intersections of this shear zone are considered choice areas for further exploration.

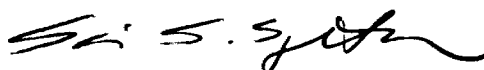
RECOMMENDATIONS

Exploratory diamond drilling is apparently the most effective method to follow up the findings. Such drilling, if desired, should be conducted in conjunction with a program designed to explore the east block of claims.

However, in view of the fact that extensive surface work was conducted in recent years on the adjoining Stancop property, and two years assessment work was done on four claims covering an impressive airborne electromagnetic conductor adjoining to the north and east of the east block of claims, the writer recommends to file the work described in this report to protect the claim block and to examine all information available or when available on the said adjoining properties prior to planning a detailed drill program.

Respectfully submitted,

CANA EXPLORATION CONSULTANTS LIMITED



S. S. Szetu, Ph.D., P.Eng.
Consulting Geologist

SSS:rk

Toronto, Ontario
July 11, 1977



Powell trap

W7508-223



41P15NE8245 2.2453 POWELL

900

THE MINING ACT REF

To the Recorder of Larder Lake Mining Division

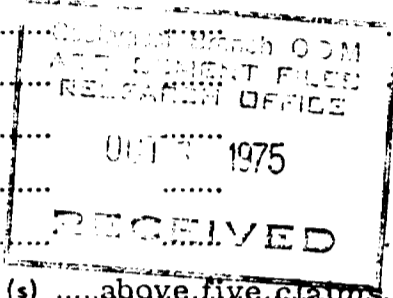
I, Florian Yandel Jr., M.D. A 42401
name of Recorded Holder Prospector's Licence

521 Route 304, Bardonia, N.Y., 10954, U.S.A.
Post Office Address

do hereby report the performance of 200 days of magnetometer survey
type of work

not before reported to be applied on the following contiguous claims

Table with 6 columns: Claim No., Days, Claim No., Days, Claim No., Days. Contains entries for claims L 449382, L449385, L 449397, L 449398, L 454585.



All the work was performed on Mining Claim (s) above five claims
(In the case of geological and/or geophysical survey (s) where more than 18 claims are involved attach a schedule)

READ CAREFULLY: THE FOLLOWING INFORMATION IS REQUIRED BY THE MINING RECORDER.

- For Manual Work, Stripping or Opening up of Mines, Sinking Shafts or Other Actual Mining Operations - Names and addresses of the men who performed the work and the dates and hours of their employment.
For Diamond and other Core Drilling - Footage, No. and angle of holes and diameter of core. Name and address of owner or operator of drill. Dates when drilling was done. Signed core log and sketch in duplicate.
For Compressed Air or Other Power Driven or Mechanical Equipment
Type of drill or equipment. Names and addresses of men engaged in operating equipment and the dates and hours of their employment.
For Power Stripping - Type of equipment. Name and address of owner or operator. Amount expended. Dates on which work was done. Proof of actual cost must be submitted within 30 days of recording.
With each of the above types of work sketches are required to show the location and extent of the work in relation to the nearest claim post. In the case of diamond or other core drilling the sketch must be submitted in duplicate.
For Geophysical, Geological, Geochemical Surveys and Expenditure Credits - the name of author of report. Covering dates of survey (linecutting & office). Type of instrument used. Total amount of expenditure. Technical reports, maps, expenditure breakdown, receipts must be filed in duplicate with the Minister within 60 days of recording.
For Land Survey - the name and address of Ontario Land surveyor.

The Required Information is as Follows: (Attach a list if this space is insufficient)

Report by S. S. Szetu, Sept. 7, 1975, filed in duplicate with the Minister, under special provisions. Copy of technical statement attached herewith.

Date Sept. 23, 1975

Signature of Recorded Holder or Agent

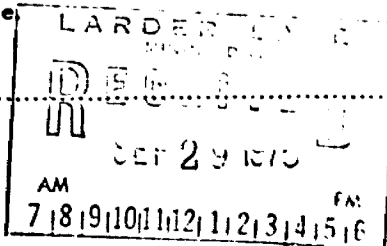
The Mining Act Certificate Verifying Report of Work

I, Sui S. Szetu, Ph.D., P. Eng. Suite 220, 12 Richmond St. E., Toronto, Ontario M5C 1N1.
(Post Office Address)

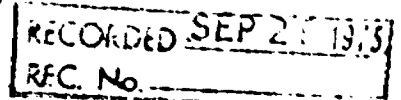
hereby certify:

- 1. That I have a personal and intimate knowledge of the facts set forth in the report of work annexed hereto, having performed the work or witnessed same during and/or after its completion.
2. That the annexed report is true.

Dated Sept. 23, 1975



Signature



(file L449382)

THE PENALTY FOR MAKING A FALSE STATEMENT IN THIS REPORT AND/OR CERTIFICATE IS \$500. OR SIX MONTHS IMPRISONMENT OR BOTH

POWER

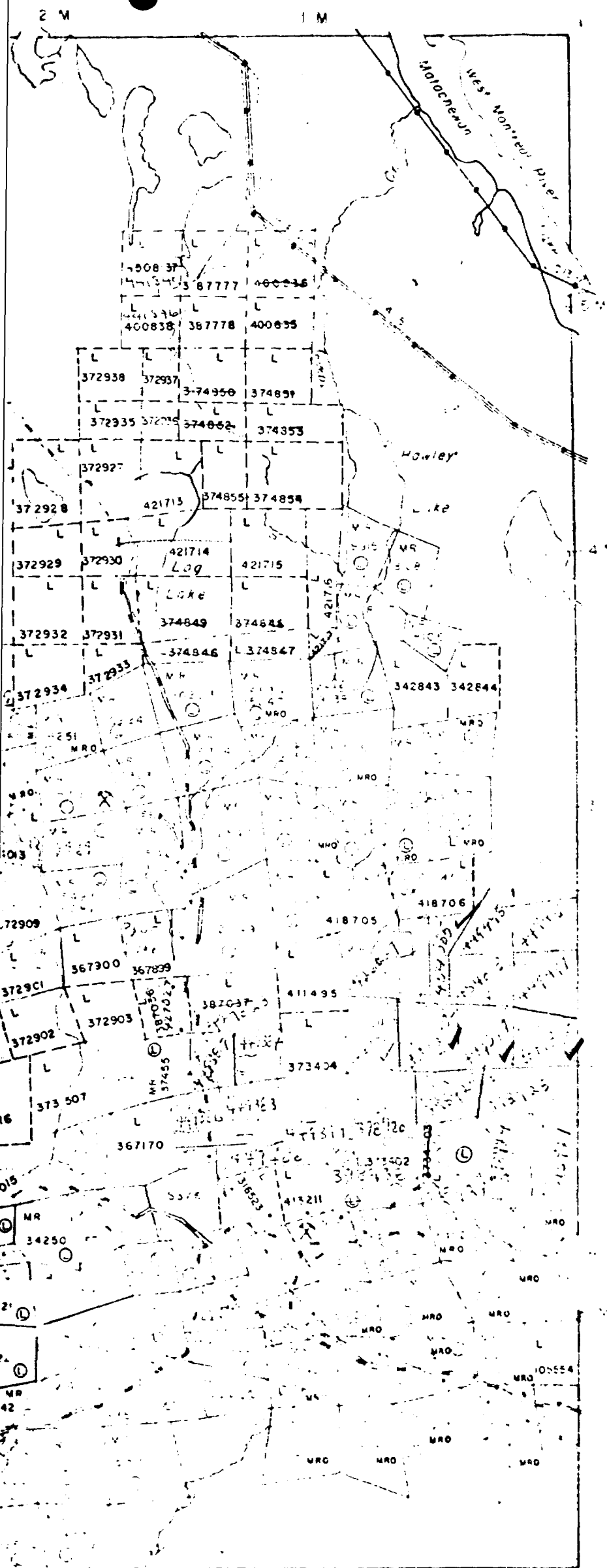
DISTRICT
TIMISKAMING

LARDER
MINING DISTRICT

SCALE: 1-INCH

LEGEND

- PATENTED LAND
- CROWN LAND SALE
- LEASES
- LOCATED LAND
- LICENSE OF OCCUPATION
- MINING RIGHTS ONLY
- SURFACE RIGHTS ONLY
- ROADS
- IMPROVED ROADS
- KING'S HIGHWAYS
- RAILWAYS
- POWER LINES
- MARSH OR SWAMP
- MINES
- WATER



Cairo Twp. (M. 210)

DATE OF IS
APR 14 1911

PLAN NO. 111

Powell trip

224

W7578-224

A separate form is required for each type of work to be recorded.

THE MINING ACT REPORT OF WORK

To the Recorder of Larder Lake Mining Division

I, Florian Yandel, Jr., M.D. A.42401
 name of Recorded Holder Prospector's Licence

521- Route 304, Bardonia, N.Y., 10954, U.S.A.
 Post Office Address

do hereby report the performance of 100 days of VLF Electromagnetic survey
 type of work

not before reported to be applied on the following contiguous claims

Claim No.	Days	Claim No.	Days	Claim No.	Days
L. 449382	20..
L. 449385	20..
L. 449397	20..
L. 449398	20..
L. 454585	20..

Circular Branch 0-011
 ASSESSMENT FILED
 RESEARCH OFFICE
 SEPT 5 1975
 RECEIVED

All the work was performed on Mining Claim (s) above five claims
 (In the case of geological and/or geophysical survey (s) where more than 18 claims are involved attach a schedule)

READ CAREFULLY: THE FOLLOWING INFORMATION IS REQUIRED BY THE MINING RECORDER.

- For Manual Work, Stripping or Opening up of Mines, Sinking Shafts or Other Actual Mining Operations - Names and addresses of the men who performed the work and the dates and hours of their employment.
- For Diamond and other Core Drilling - Footage, No. and angle of holes and diameter of core. Name and address of owner or operator of drill. Dates when drilling was done. Signed core log and sketch in duplicate.
- For Compressed Air or Other Power Driven or Mechanical Equipment
 Type of drill or equipment. Names and addresses of men engaged in operating equipment and the dates and hours of their employment.
- For Power Stripping - Type of equipment. Name and address of owner or operator. Amount expended. Dates on which work was done. Proof of actual cost must be submitted within 30 days of recording.
- With each of the above types of work sketches are required to show the location and extent of the work in relation to the nearest claim post. In the case of diamond or other core drilling the sketch must be submitted in duplicate.
- For Geophysical, Geological, Geochemical Surveys and Expenditure Credits - the name of author of report. Covering dates of survey (linecutting & office). Type of instrument used. Total amount of expenditure. Technical reports, maps, expenditure breakdown, receipts must be filed in duplicate with the Minister within 60 days of recording.
- For Land Survey - the name and address of Ontario Land surveyor.

The Required Information is as Follows: (Attach a list if this space is insufficient)

As per attached copy of technical data statement, appendix of report dated Sept. 7th, 1975, submitted under special provisions for credits to the Ministry of Natural Resources, Parliament Buildings, Toronto.

Date Sept. 23, 1975

Signature of Recorder/Holder/Agent

The Mining Act Certificate Verifying Report of Work

I, Sui S. Szetu, Ph.D., P. Eng.
 Suite 220, 12 Richmond St. E., Toronto, Ont. M5C 1N1
 (Post Office Address)

hereby certify:

- That I have a personal and intimate knowledge of the facts set forth in the report of work annexed hereto, having performed the work or witnessed same during and/or after its completion.
- That the annexed report is true.

Dated Sept. 23, 1975

Signature

(file L449382)

SEP 29 1975
 AM 7 18 19 10 11 12 13 14 15 16

RECORDED SEP 29 1975
 REC. No.

THE PENALTY FOR MAKING A FALSE STATEMENT IN THIS REPORT AND/OR CERTIFICATE IS \$500. OR SIX MONTHS IMPRISONMENT OR BOTH

POWER

DISTRICT
TIMISKAMING

LARDER
MINING DISTRICT

SCALE: 1-INCH

LEGEND

- PATENTED LAND
- CROWN LAND SALE
- LEASES
- LOCATED LAND
- LICENSE OF OCCUPATION
- MINING RIGHTS ONLY
- SURFACE RIGHTS ONLY
- ROADS
- IMPROVED ROADS
- KING'S HIGHWAYS
- RAILWAYS
- POWER LINES
- MARSH OR MISKAG
- MINES

CAIRO TWP. (M. 210)



DATE OF IS
APR 14 1911

PLAN NO M



Ministry of
Natural
Resources
Ontario

Powell

W7508 005

#225

A separate form is required for each type of work to be recorded.

THE MINING ACT REPORT OF WORK

To the Recorder of Larder Lake Mining Division

I, Florian Yandel, Jr., M.D. A 42401
name of Recorded Holder Prospector's Licence

521 - Route 304, Bardonia, N.Y., 10954, U.S.A.
Post Office Address

do hereby report the performance of 80 days of vertical loop EM survey
type of work

not before reported to be applied on the following contiguous claims

Claim No.	Days	Claim No.	Days	Claim No.	Days
L 449382.	20...
L 449385...	20...
L 449397	20
L 449398...	20...
.....
.....

Gold and Silver OGM
ASSIGNMENT FILED
REGISTRATION OFFICE
0015 1975
RECEIVED

All the work was performed on Mining Claim (s) above four claims
(In the case of geological and/or geophysical survey (s) where more than 18 claims are involved attach a schedule)

READ CAREFULLY: THE FOLLOWING INFORMATION IS REQUIRED BY THE MINING RECORDER.

- For Manual Work, Stripping or Opening up of Mines, Sinking Shafts or Other Actual Mining Operations - Names and addresses of the men who performed the work and the dates and hours of their employment.
- For Diamond and other Core Drilling - Footage, No. and angle of holes and diameter of core. Name and address of owner or operator of drill. Dates when drilling was done. Signed core log and sketch in duplicate.
- For Compressed Air or Other Power Driven or Mechanical Equipment
Type of drill or equipment. Names and addresses of men engaged in operating equipment and the dates and hours of their employment.
- For Power Stripping - Type of equipment. Name and address of owner or operator. Amount expended. Dates on which work was done. Proof of actual cost must be submitted within 30 days of recording.
- With each of the above types of work sketches are required to show the location and extent of the work in relation to the nearest claim post. In the case of diamond or other core drilling the sketch must be submitted in duplicate.
- For Geophysical, Geological, Geochemical Surveys and Expenditure Credits - the name of author of report. Covering dates of survey (linecutting & office). Type of instrument used. Total amount of expenditure. Technical reports, maps, expenditure breakdown, receipts must be filed in duplicate with the Minister within 60 days of recording.
- For Land Survey - the name and address of Ontario Land surveyor.

The Required Information is as Follows: (Attach a list if this space is insufficient)

As per attached copy of data statement, appendix of report dated Sept. 7th, 1975 by Dr. S. S. Szetu, submitted under special provisions for credits to the Minister.

Date Sept. 24th, 1975

S. S. Szetu
Signature of Recorded Holder or Agent

The Mining Act
Certificate Verifying Report of Work

I, Sui S. Szetu, Ph.D., P. Eng.

Suite 220, 12 Richmond St. East, Toronto, M5C 1N1
(Post Office Address)

hereby certify:

- That I have a personal and intimate knowledge of the facts set out in the report of work annexed hereon, having performed the work or witnessed same during and/or after its completion.
- That the annexed report is true.

Dated Sept. 24th 19 75

S. S. Szetu
Signature

(file L449382)

LARDER LAKE
RECEIVED
SEP 29 1975
AM 7 18 10 11 12 13 14 15 16 PM

RECORDED SEP 29 1975
REC. No.

THE PENALTY FOR MAKING A FALSE STATEMENT IN THIS REPORT AND/OR CERTIFICATE IS \$500. OR SIX MONTHS IMPRISONMENT OR BOTH

OF

POWELL

DISTRICT OF
TIMISKAMING

LARDER LAKE
MINING DIVISION

SCALE: 1-INCH 40 CHAINS

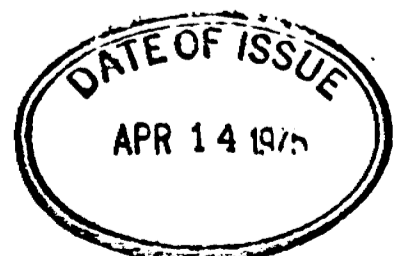
LEGEND

- PATENTED LAND
- CROWN LAND SALE
- LEASES
- LOCATED LAND
- LICENSE OF OCCUPATION
- MINING RIGHTS ONLY
- SURFACE RIGHTS ONLY
- ROADS
- IMPROVED ROADS
- KING'S HIGHWAYS
- RAILWAYS
- POWER LINES
- MARSH OR MUSKIEG
- MINES
- UNDEVELOPED

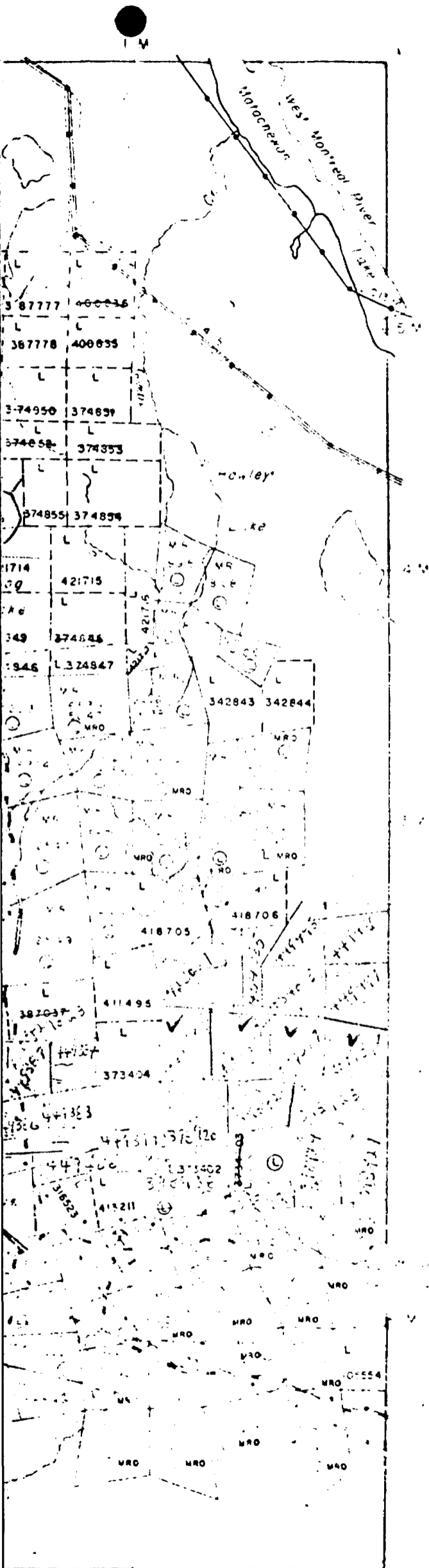
NOTES

All the surface rights in this plan are reserved to the Crown of the Province of Ontario.

This plan is subject to the provisions of the Mining Act, R.S.O. 1937, c. 146, and the regulations thereunder.



PLAN NO M 241116



Cairo Twp. (M. 210)



Ministry of
Natural
Resources

Ontario

Powell

107508-226

226

A separate form is required for each type of work to be recorded.

THE MINING ACT REPORT OF WORK

To the Recorder of Larder Lake Mining Division

I, Florian Yandel, Jr., M.D. A 42401
name of Recorded Holder Prospector's Licence

521 - Route 304, Bardonia, N.Y., 10954, U.S.A.
Post Office Address

do hereby report the performance of 180 days of geological mapping
type of work

not before reported to be applied on the following contiguous claims

Claim No.	Days	Claim No.	Days	Claim No.	Days
L 449382.	40...
L 449385...	40...
L 449397..	40...
L 449398..	40...
L 454585..	20...

Geological Branch ODM
ASSESSMENT BRANCH
RESEARCH OFFICE
OCT 3 1975
RECEIVED

All the work was performed on Mining Claim (s) the above listed five claims
(In the case of geological and/or geophysical survey (s) where more than 18 claims are involved attach a schedule)

READ CAREFULLY: THE FOLLOWING INFORMATION IS REQUIRED BY THE MINING RECORDER.

For Manual Work, Stripping or Opening up of Mines, Sinking Shafts or Other Actual Mining Operations - Names and addresses of the men who performed the work and the dates and hours of their employment.

For Diamond and other Core Drilling - Footage, No. and angle of holes and diameter of core. Name and address of owner or operator of drill. Dates when drilling was done. Signed core log and sketch in duplicate.

For Compressed Air or Other Power Driven or Mechanical Equipment
Type of drill or equipment. Names and addresses of men engaged in operating equipment and the dates and hours of their employment.

For Power Stripping - Type of equipment. Name and address of owner or operator. Amount expended. Dates on which work was done. Proof of actual cost must be submitted within 30 days of recording.

With each of the above types of work sketches are required to show the location and extent of the work in relation to the nearest claim post. In the case of diamond or other core drilling the sketch must be submitted in duplicate.

For Geophysical, Geological, Geochemical Surveys and Expenditure Credits - the name of author of report. Covering dates of survey (linecutting & office). Type of instrument used. Total amount of expenditure. Technical reports, maps, expenditure breakdown, receipts must be filed in duplicate with the Minister within 60 days of recording.

For Land Survey - the name and address of Ontario Land surveyor.

The Required Information is as Follows: (Attach a list if this space is insufficient)

Report by S. S. Szetu, dated Sept. 7th, 1975, submitted to the Minister.
Survey carried out in the period between July 18 to Sept. 7th, 1975, along a total of 5 miles of north-south picket lines, cut at 300' intervals, covering the five claims, and, along a total of 4.3 miles of east-west picket lines, also cut at 300' intervals, covering the same but claim L-454585. Special provisions credits requested.

Date Sept. 24, 1975

S. S. Szetu
Signature of Recorder/Agent

The Mining Act
Certificate Verifying Report of Work

I, Sui S. Szetu, Ph. D., P. Eng.

Suite 220, 12 Richmond St. E., Toronto, Ontario, M5C 1N1
(Post Office Address)

hereby certify:

1. That I have a personal and intimate knowledge of the facts set forth in the report of work annexed hereto, having performed the work or witnessed same during and/or after its completion.
2. That the annexed report is true.

Dated Sept. 24 19 75

S. S. Szetu
Signature

(file L449382)

LARDER LAKE
RECEIVED
OCT 29 1975
AM 7 18 19 10 11 12 13 14 15 16 PM

RECORDED SEP 29 1975
REC. No. _____

THE PENALTY FOR MAKING A FALSE STATEMENT IN THIS REPORT AND/OR CERTIFICATE IS \$500. OR SIX MONTHS IMPRISONMENT OR BOTH

THE TOWNSHIP OF
OF
POWELL

DISTRICT OF
TIMISKAMING

LARGER LAKE
MINING DIVISION

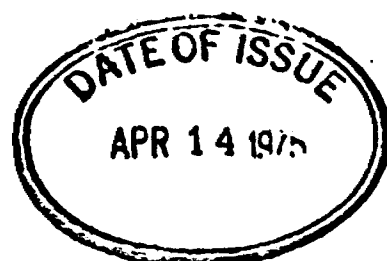
SCALE: 1-INCH 40 CHAINS

LEGEND

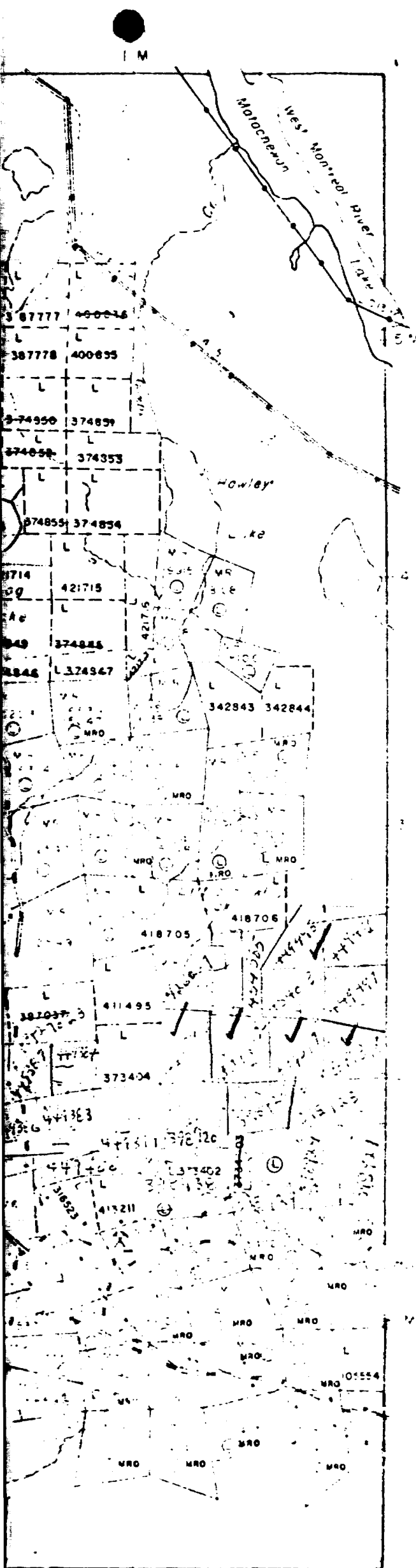
- PATENTED LAND
- CROWN LAND SALE
- LEASES
- LOCATED LAND
- LICENSE OF OCCUPATION
- MINING RIGHTS ONLY
- SURFACE RIGHTS ONLY
- ROADS
- IMPROVED ROADS
- KING'S HIGHWAYS
- RAILWAYS
- POWER LINES
- MARSH OR MESSAG
- MINES
- UNDEVELOPED

NOTES

All mining rights are shown
in accordance with the Act of 1914.



PLAN NO M 241116



Cairo Twp. (M. 210)

Powell Corp

#155

077-155



ONTARIO

THE MINING ACT REPORT OF WORK

A separate form is required for each type of work to be recorded.

To the Recorder of Larder Lake Mining Division

I, Florian Yandel, Jr., M.D. A. 42401 Miner's Licence

521- Route 304, Bardonia, N.Y., U.S.A. Post Office Address

do hereby report the performance of 120 days of Geological survey type of work

not before reported to be applied on the following contiguous claims

Table with columns: Claim No., Days, Claim No., Days, Claim No., Days. Lists claims L 449400, L 449399, L 449387, L 449386, L 449384, L 449383.

Geological Branch ODM ASSESSMENT FILES RESEARCH OFFICE AUG 3 1977 RECEIVED

All the work was performed on Mining Claim (s) above six claims (In the case of geological and/or geophysical survey (s) where more than 18 claims are involved attach a schedule)

READ CAREFULLY: THE FOLLOWING INFORMATION IS REQUIRED BY THE MINING RECORDER.

For Manual Work, Stripping or Opening up of Mines, Sinking Shafts or Other Actual Mining Operations - Names and addresses of the men who performed the work and the dates and hours of their employment.

For Diamond and other Core Drilling - Footage, No. and angle of holes and diameter of core. Name and address of owner or operator of drill. Dates when drilling was done. Signed core log and sketch in duplicate.

For Compressed Air or Other Power Driven or Mechanical Equipment

Type of drill or equipment. Names and addresses of men engaged in operating equipment and the dates and hours of their employment.

For Power Stripping - Type of equipment. Name and address of owner or operator. Amount expended. Dates on which work was done. Proof of actual cost must be submitted within 30 days of recording.

With each of the above types of work sketches are required to show the location and extent of the work in relation to the nearest claim post. In the case of diamond or other core drilling the sketch must be submitted in duplicate.

For Geophysical, Geological, Geochemical Surveys and Expenditure Credits - the name of author of report. Covering dates of survey (linecutting & office). Type of instrument used. Total amount of expenditure. Technical reports, maps, expenditure breakdown, receipts must be filed in duplicate with the Minister within 60 days of recording.

For Land Survey - the name and address of Ontario Land surveyor.

The Required Information is as Follows: (Attach a list if this space is insufficient)

As per attached copy of data statement, appendix of report dated July 11, 1977 by Dr. S. S. Szetu, submitted under special provisions for credits to the Minister.

LARDER LAKE MINING DIV. RECEIVED JUL 18 1977 AM 7 18 19 10 11 12 1 12 13 14 15 5 PM

Date July 15th, 1977

Signature of Recorded Holder or Agent

The Mining Act Certificate Verifying Report of Work

I, Sui S. Szetu, Ph. D., P. Eng.

Ste. 220, 12 Richmond Street, E., Toronto, Ont. M5C 1N1 (Post Office Address)

hereby certify:

- 1. That I have a personal and intimate knowledge of the facts set forth in the report of work annexed hereto, having performed the work or witnessed same during and/or after its completion.
2. That the annexed report is true.

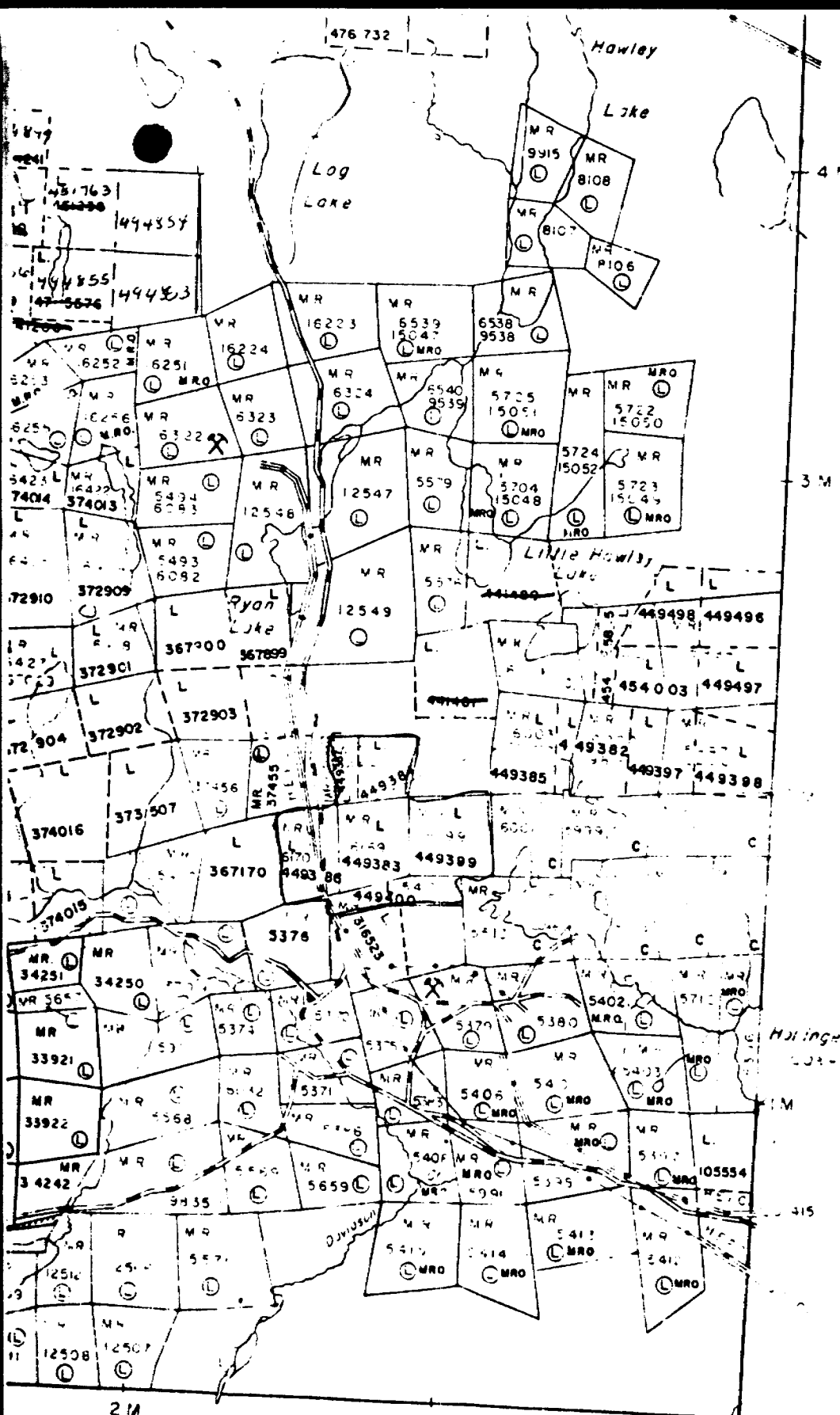
Dated July 15th, 1977

Signature

RECORDED JUL 18 1977 REC. No.

(See L 449382)

THE PENALTY FOR MAKING A FALSE STATEMENT IN THIS REPORT AND/OR CERTIFICATE IS \$500. OR SIX MONTHS IMPRISONMENT OR BOTH



Cairo Twp. (M. 210)

PATENTED LAND
CROWN LAND SALES
LEASES
LOCATED LAND
LICENSE OF OCCUPATION
MINING RIGHTS ON
SURFACE RIGHTS ON
ROADS
IMPROVED ROADS
KING'S HIGHWAYS
RAILWAYS
POWER LINES
MARSH OR MUSKEG
MINES
CANCELLED

400' Surface Right
the shores of all lakes

TO 750' Cover
To Below Contour 570
File 12090 V. 2

Areas withdrawn from
43 of the Mining Act
Order No. File

W. 43/76 18852

LARDEE LAKE
MINING DIV.
RECEIVED
FEB 1 1977
7 18 19 10 11 12 1 2 3 4 5 6 PM

0) Powell Twp
m241

PLAN NO. M
ONTARIO
MINISTRY OF NATURAL RESOURCES
SURVEYS AND MAPS

Powell trip

156



ONTARIO

THE MINING ACT REPORT OF WORK

A separate form is required for each type of work to be recorded.

To the Recorder of Larder Lake Mining Division

I, Florian Yandel, Jr., M.D. A. 42401 Miner's Licence

521- Route 304 Bardonia, N.Y. 10954, U.S.A. Post Office Address

do hereby report the performance of 240 days of magnetic survey type of work

not before reported to be applied on the following contiguous claims

Table with 6 columns: Claim No., Days, Claim No., Days, Claim No., Days. Lists claims L 449400 through L 449383, each with 40 days.

Geological Branch ODM ASSESSMENT FILES RESEARCH OFFICE AUG 3 1977 RECEIVED

All the work was performed on Mining Claim (s) the above six claims (In the case of geological and/or geophysical survey (s) where more than 18 claims are involved attach a schedule)

READ CAREFULLY: THE FOLLOWING INFORMATION IS REQUIRED BY THE MINING RECORDER.

- For Manual Work, Stripping or Opening up of Mines, Sinking Shafts or Other Actual Mining Operations - Names and addresses of the men who performed the work and the dates and hours of their employment. For Diamond and other Core Drilling - Footage, No. and angle of holes and diameter of core. Name and address of owner or operator of drill. Dates when drilling was done. Signed core log and sketch in duplicate. For Compressed Air or Other Power Driven or Mechanical Equipment Type of drill or equipment. Names and addresses of men engaged in operating equipment and the dates and hours of their employment. For Power Stripping - Type of equipment. Name and address of owner or operator. Amount expended. Dates on which work was done. Proof of actual cost must be submitted within 30 days of recording. With each of the above types of work sketches are required to show the location and extent of the work in relation to the nearest claim post. In the case of diamond or other core drilling the sketch must be submitted in duplicate. For Geophysical, Geological, Geochemical Surveys and Expenditure Credits - the name of author of report. Covering dates of survey (linecutting & office). Type of instrument used. Total amount of expenditure. Technical reports, maps, expenditure breakdown, receipts must be filed in duplicate with the Minister within 60 days of recording. For Land Survey - the name and address of Ontario Land surveyor.

The Required Information is as Follows: (Attach a list if this space is insufficient)

As per attached copy of data statement, appendix of report dated July 11th, 1977 by Dr. S. S. Szetu, submitted under special provisions for credits to the Minister.

RECEIVED JUL 18 1977 AM 7 18 19 10 11 12 1 12 3 4 5 6 PM

Date July 15th, 1977

Signature of Recorder/Holder or Agent

The Mining Act Certificate Verifying Report of Work

I, Sui S. Szetu, Ph.D., P. Eng.

Suite 220, 12 Richmond St. E., Toronto, M5C 1N1 (Post Office Address)

hereby certify:

- 1. That I have a personal and intimate knowledge of the facts set forth in the report of work annexed hereto, having performed the work or witnessed same during and/or after its completion. 2. That the annexed report is true.

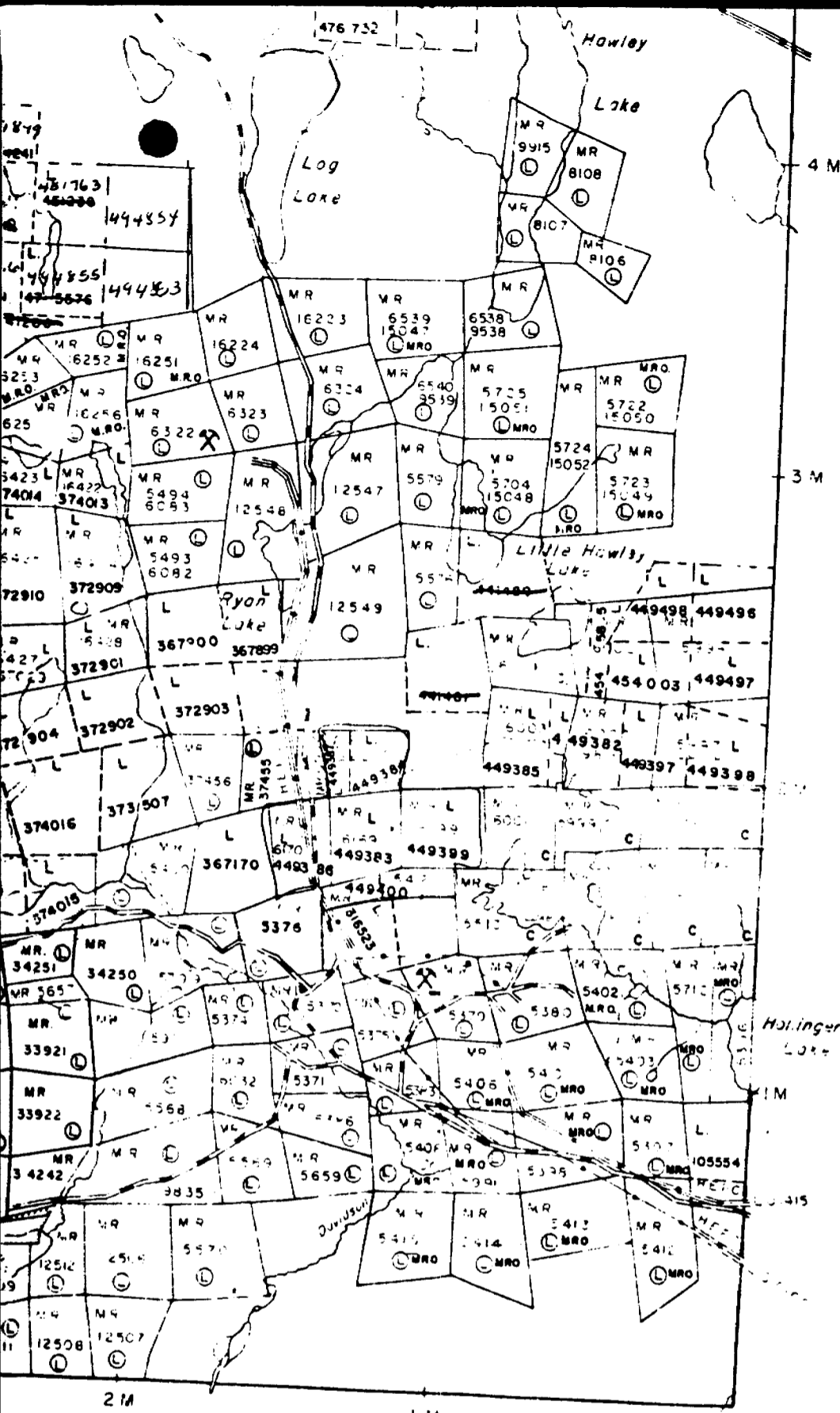
Dated July 15th, 1977

Signature

(File L 449383)

RECORDED JUL 18 1977 REC No.

THE PENALTY FOR MAKING A FALSE STATEMENT IN THIS REPORT AND/OR CERTIFICATE IS \$500. OR SIX MONTHS IMPRISONMENT OR BOTH



Cairo Twp. (M. 210)

PATENTED LAND
CROWN LAND SAL
LEASES
LOCATED LAND
LICENSE OF OCCU
MINING RIGHTS ON
SURFACE RIGHTS O
ROADS
IMPROVED ROADS
KING'S HIGHWAYS
RAILWAYS
POWER LINES
MARSH OR MUSKEG
MINES
CANCELLED

400' Surface Right
the shores of all a

LO 7901 Cover
To Below Contour 570
File 12090 V 1 2

LO 4167

Areas withdrawn fr
43 of the Mining A
Order No. File

W. 43/76 18852

LARDER LAKE
MINING DIV.
RECEIVED
FEB 13 1977
AM 7 18 19 PM 10 11 12 1 1 2 3 4 5 6

PLAN NO. M

ONTAR
MINISTRY OF NATU
SURVEYS AND MAP

Power Twp
M 241

Powell *map*

#157

W1953-157



ONTARIO

THE MINING ACT REPORT OF WORK

A separate form is required for each type of work to be recorded.

To the Recorder of Larder Lake Mining Division

I, Florian Yandel, Jr., M.D. A. 42401
name of Recorded Holder Miner's Licence

521 - Route 304, Bardonia, N.Y., 10954, U.S.A.
Post Office Address

do hereby report the performance of 120 days of electromagnetic survey
type of work

not before reported to be applied on the following contiguous claims

Claim No.	Days	Claim No.	Days	Claim No.	Days
L 449400	20...
L 449399	20...
L 449387	20...
L 449386	20...
L 449384	20...
L 449383	20...

Geological Branch ODM
ASSESSMENT FILES
RESEARCH OFFICE
AUG 3 1977
RECEIVED

All the work was performed on Mining Claim (s) above six claims
(In the case of geological and/or geophysical survey (s) where more than 18 claims are involved attach a schedule)

READ CAREFULLY: THE FOLLOWING INFORMATION IS REQUIRED BY THE MINING RECORDER.

For Manual Work, Stripping or Opening up of Mines, Sinking Shafts or Other Actual Mining Operations - Names and addresses of the men who performed the work and the dates and hours of their employment.

For Diamond and other Core Drilling - Footage, No. and angle of holes and diameter of core. Name and address of owner or operator of drill. Dates when drilling was done. Signed core log and sketch in duplicate.

For Compressed Air or Other Power Driven or Mechanical Equipment

Type of drill or equipment. Names and addresses of men engaged in operating equipment and the dates and hours of their employment.

For Power Stripping - Type of equipment. Name and address of owner or operator. Amount expended. Dates on which work was done. Proof of actual cost must be submitted within 30 days of recording.

With each of the above types of work sketches are required to show the location and extent of the work in relation to the nearest claim post. In the case of diamond or other core drilling the sketch must be submitted in duplicate.

For Geophysical, Geological, Geochemical Surveys and Expenditure Credits - the name of author of report. Covering dates of survey (linecutting & office). Type of instrument used. Total amount of expenditure. Technical reports, maps, expenditure breakdown, receipts must be filed in duplicate with the Minister within 60 days of recording.

For Land Survey - the name and address of Ontario Land surveyor.

The Required Information is as Follows: (Attach a list if this space is insufficient)

As per attached copy of data statement, appendix of report dated July 11, 1977 by Dr. S. S. Szetu, submitted under special provisions for credits to the Minister.

LARDER LAKE
RECEIVED
JUL 18 1977
AM 7 18 19 10 11 12 1 2 3 4 5 5 PM

Date July 15th, 1977

S. S. Szetu
Signature of Recorded Holder/Agent

The Mining Act
Certificate Verifying Report of Work

I, Sui S. Szetu, Ph.D., P. Eng.
Ste. 220, 12 Richmond Street E., Toronto, Ont., M5C 1N1
(Post Office Address)

hereby certify:

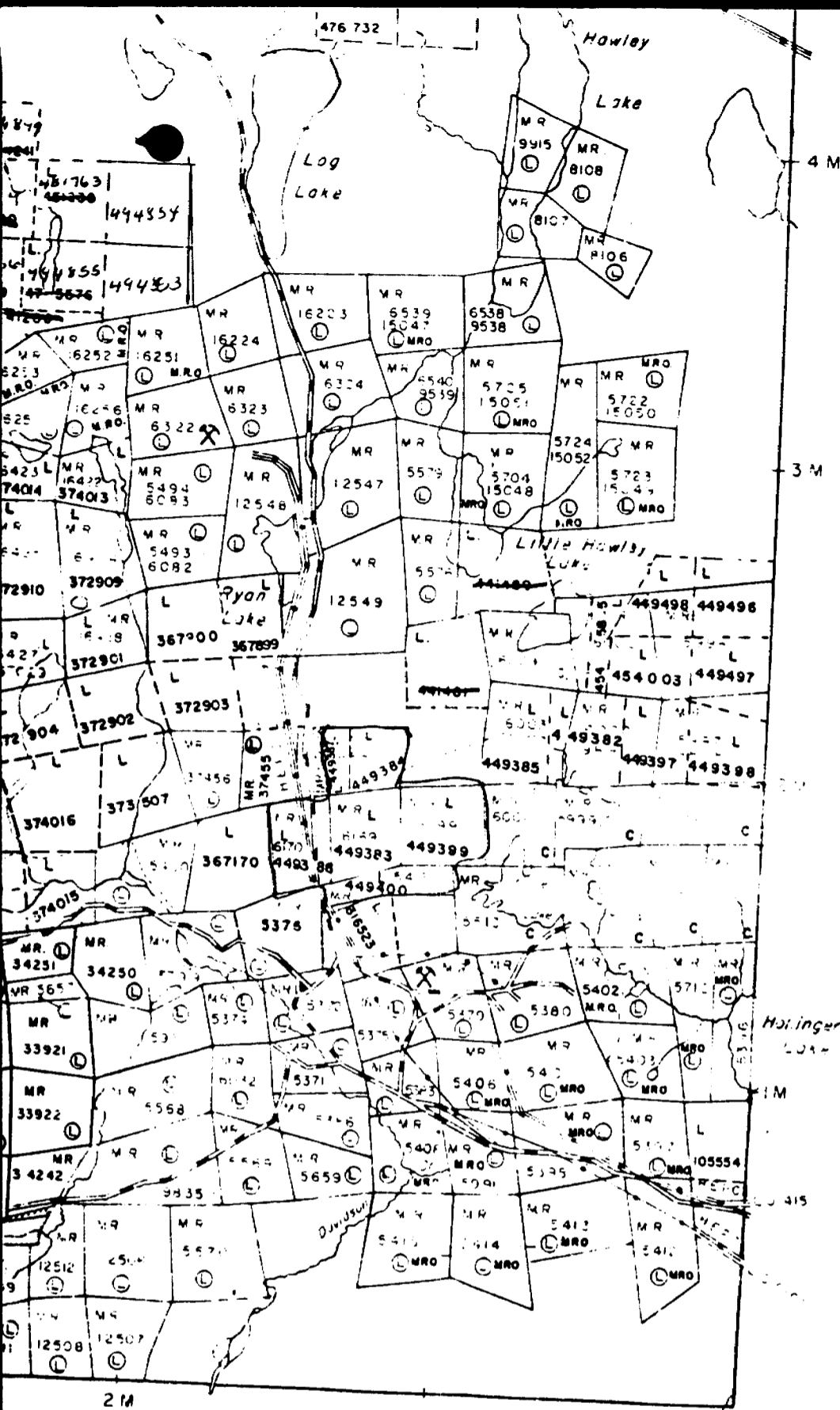
1. That I have a personal and intimate knowledge of the facts set forth in the report of work annexed hereto, having performed the work or witnessed same during and/or after its completion.
2. That the annexed report is true.

Dated July 15th, 1977
S. S. Szetu
Signature

(file L 449382)

RECORDED JUL 18 1977
REC. No.

THE PENALTY FOR MAKING A FALSE STATEMENT IN THIS REPORT AND/OR CERTIFICATE IS \$500. OR SIX MONTHS IMPRISONMENT OR BOTH



Cairo Twp. (M. 210)

PATENTED LAND
 CROWN LAND SAL
 LEASES
 LOCATED LAND
 LICENSE OF OCCU
 MINING RIGHTS ON
 SURFACE RIGHTS C
 ROADS
 IMPROVED ROADS
 KING'S HIGHWAYS
 RAILWAYS
 POWER LINES
 MARSH OR MUSKEG
 MINES
 CANCELLED

400' Surface Right
 the shores of all ra

LO 7501 Cover
 To Below Contour 570
 File 12090 V. 2

Areas withdrawn f
 43 of the Mining A
 Order No. File

W. 43/76 18852

ORDER LARE
 RECEIVED
 FEB 14 1977
 AM 7 18 19 PM 10 11 12 1 1 2 3 4 5 6

Powell Twp
 m241

PLAN NO. M.

ONTAR
 MINISTRY OF NATU
 SURVEYS AND MAP

JUL 18 1977

**GEOPHYSICAL - GEOLOGICAL - GEOCHEMICAL
TECHNICAL DATA STATEMENT**

PROJECTS UNIT

TO BE ATTACHED AS AN APPENDIX TO TECHNICAL REPORT
FACTS SHOWN HERE NEED NOT BE REPEATED IN REPORT
TECHNICAL REPORT MUST CONTAIN INTERPRETATION, CONCLUSIONS ETC.

Type of Survey Magnetic survey, VLF EM survey & Geology

Township or Area Powell township

Claim holder(s) F. Yandel, Jr., M. D.

Author of Report S. S. Szetu, Ph. D., P. Eng.

Address Suite 220, 12 Richmond St. E., Toronto

Covering Dates of Survey Period May 25-July 11, 1977
(linecutting to office)

Total Miles of Line cut 4.3 miles

MINING CLAIMS TRAVERSED
List numerically EM

L (prefix)	Number (number)	
L	449380	✓
L	449389	✓
L	449387	✓
L	449386	✓
L	449384	✓
L	449383	✓

**SPECIAL PROVISIONS
CREDITS REQUESTED**

ENTER 40 days (includes
line cutting) for first
survey.

ENTER 20 days for each
additional survey using
same grid.

	DAYS per claim
Geophysical	
--Electromagnetic	20
--Magnetometer	40
--Radiometric	_____
--Other	_____
Geological	20
Geochemical	_____

AIRBORNE CREDITS (Special provision credits do not apply to airborne surveys)
Magnetometer _____ Electromagnetic _____ Radiometric _____
(enter days per claim)

DATE: July 15th, 1977 SIGNATURE: [Signature]
Author of Report or Agent

PROJECTS SECTION L.D
Res. Geol. _____ Qualifications 63.1064
Previous Surveys _____

Checked by _____ date _____

GEOLOGICAL BRANCH _____

Approved by _____ date _____

GEOLOGICAL BRANCH _____

Approved by _____ date _____

TOTAL CLAIMS 6

OFFICE USE ONLY

If space insufficient, attach list

Show instrument technical data in each space for type of survey submitted or indicate "not applicable"

GEOPHYSICAL TECHNICAL DATA

GROUND SURVEYS

Number of Stations 391 magnetic and 388 electromagnetic Number of Readings 391 magnetic 776 VLF EM. Station interval 50 ft. Line spacing 400 Profile scale or Contour intervals 200 gamma contour intervals; scale of EM profile: 1/8" = 10% (specify for each type of survey)

MAGNETIC

Instrument Flusgate MF-1 Accuracy - Scale constant 20 gammas Diurnal correction method Base check Base station location L4E, Base line

ELECTROMAGNETIC

Instrument Ronka EM 16 Coil configuration Opertor facing north Coil separation Transmitter NAA, Cutler Maine, U. S. A. Accuracy + 1% Method: [] Fixed transmitter [] Shoot back [] In line [] Parallel line Frequency 17.8 kHz (specify V.L.F. station) Parameters measured vertical in-phase and out-of-phase components

GRAVITY

Instrument Scale constant Corrections made Base station value and location

Elevation accuracy

INDUCED POLARIZATION -- RESISTIVITY

Instrument Time domain Frequency domain Frequency Range Power Electrode array Electrode spacing Type of electrode

GEOPHYSICAL - GEOLOGICAL - GEOCHEMICAL
TECHNICAL DATA STATEMENT

RECEIVED

JUL 18 1977

PROJECTS UNIT

TO BE ATTACHED AS AN APPENDIX TO TECHNICAL REPORT
FACTS SHOWN HERE NEED NOT BE REPEATED IN REPORT
TECHNICAL REPORT MUST CONTAIN INTERPRETATION, CONCLUSIONS ETC.

Type of Survey Magnetic survey, VLF EM survey & Geology

Township or Area Powell township

Claim holder(s) E. Yandel, Jr., M. D.

Author of Report S. S. Szetu, Ph. D., P. Eng.

Address Suite 220, 12 Richmond St. E., Toronto

Covering Dates of Survey Period May 25-July 11, 1977
(linecutting to office)

Total Miles of Line cut 4.3 miles

MINING CLAIMS TRAVERSED
List numerically

L.....449400.....
(prefix) (number)

L.....449399.....

L.....449387.....

L.....449386.....

L.....449384.....

L.....449383.....

If space insufficient, attach list

SPECIAL PROVISIONS
CREDITS REQUESTED

DAYS
per claim

Geophysical

--Electromagnetic 20

--Magnetometer 40

--Radiometric _____

--Other _____

Geological 20

Geochemical _____

ENTER 40 days (includes
line cutting) for first
survey.

ENTER 20 days for each
additional survey using
same grid.

AIRBORNE CREDITS (Special provision credits do not apply to airborne surveys)

Magnetometer _____ Electromagnetic _____ Radiometric _____
(enter days per claim)

DATE: July 15th, 1977 SIGNATURE: [Signature]
Author of Report or Agent

PROJECTS SECTION

Res. Geol. _____ Qualifications 63.1064

Previous Surveys _____

Checked by _____ date _____

GEOLOGICAL BRANCH _____

Approved by _____ date _____

GEOLOGICAL BRANCH _____

Approved by _____ date _____

TOTAL CLAIMS 6

OFFICE USE ONLY



Recorded Holder	Florian Yandel, Jr. M.D.
Township or Area	Powell Township

Type of survey and number of Assessment days credit per claim	Mining Claims
Geophysical	
Electromagnetic _____ 20 _____ days	L. 449383 - 84
Magnetometer _____ 40 _____ days	449386 - 87
Radiometric _____ days	449399 - 400
Induced polarization _____ days	
Section 86 (18) _____ days	
Geological _____ 20 _____ days	
Geochemical _____ days	
Man days <input type="checkbox"/> Airborne <input type="checkbox"/>	
Special provision <input checked="" type="checkbox"/> Ground <input checked="" type="checkbox"/>	
Notice of Intent to be issued:	
<input type="checkbox"/> Credits have been reduced because of partial coverage of claims.	
<input type="checkbox"/> Credits have been reduced because of corrections to work dates and figures of applicant.	
<input type="checkbox"/> No credits have been allowed for the following mining claims as they were not sufficiently covered by the survey:	

The Mining Recorder may reduce the above credits if necessary in order that the total number of approved assessment days recorded on each claim does not exceed the maximum allowed as follows: Geophysical — 80; Geological — 40; Geochemical — 40;



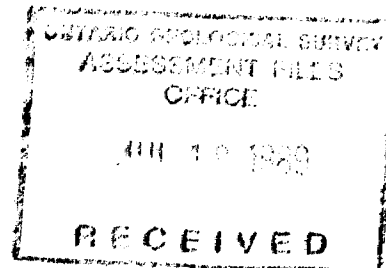
2.2453

Your file:

Our file: 2.2453

1978 05 15

Mr. Euan Craig
Mining Recorder
Ministry of Natural Resources
Box 984
4 Government Road East
Kirkland Lake, Ontario
P2N 1A2



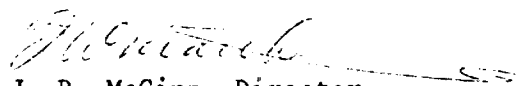
Dear Sir:

Re: Mining Claims L. 449383 et al, Powell Twp. File 2.2453

The Geophysical (Electromagnetic & Magnetometer), and Geological assessment work credits as shown on the attached statement have been approved as of the above date.

Please inform the recorded holder of these mining claims and so indicate on your records.

Yours very truly,


J. R. McGinn, Director
Lands Administration Branch
Whitney Block, Room 1617
Queen's Park
Toronto, Ontario
M7A 1W3
Phone: 416-965-6918

DN/mw

- cc: J. C. Honsberger
Agincourt, Ontario
Attn: Mr. J. C. Honsberger, P. Eng.,
- cc: Dr. F. Yandel Jr.
Bardonia, New York
U.S.A.
- cc: Dr. S. S. Szetu
Toronto, Ontario
- cc: Resident Geologist
Kirkland Lake, Ontario

Baden Twp. (M.205)

THE TOWNSHIP
OF
2.2453
POWELL

DISTRICT OF
TIMISKAMING

LARDER LAKE
MINING DIVISION

SCALE: 1-INCH = 40 CHAINS

LEGEND

PATENTED LAND	Ⓟ
CROWN LAND SALE	C.S.
LEASES	Ⓛ
LOCATED LAND	Loc.
LICENSE OF OCCUPATION	L.O.
MINING RIGHTS ONLY	M.R.O.
SURFACE RIGHTS ONLY	S.R.O.
ROADS	—
IMPROVED ROADS	—
KING'S HIGHWAYS	—
RAILWAYS	—
POWER LINES	—
MARSH OR MUSKEG	—
MINES	Ⓧ
CANCELLED	C.

NOTES

400' Surface Rights Reservation along the shores of all lakes and rivers.

L.O. 7601 Covers Flooding Rights In This Twp To Below Contour 870'.00 To H.E.P.C. File: 12290 Vol. 2.

L.O. III67 Shown thus: File: 90970.

Areas withdrawn from staking under Section 43 of the Mining Act. (R.S.O. 1970).

Order No. File Date Disposition

Ⓡ W.43/76 188552 14/7/76 S.R.O.

DATE OF ISSUE

JUL 19 1977

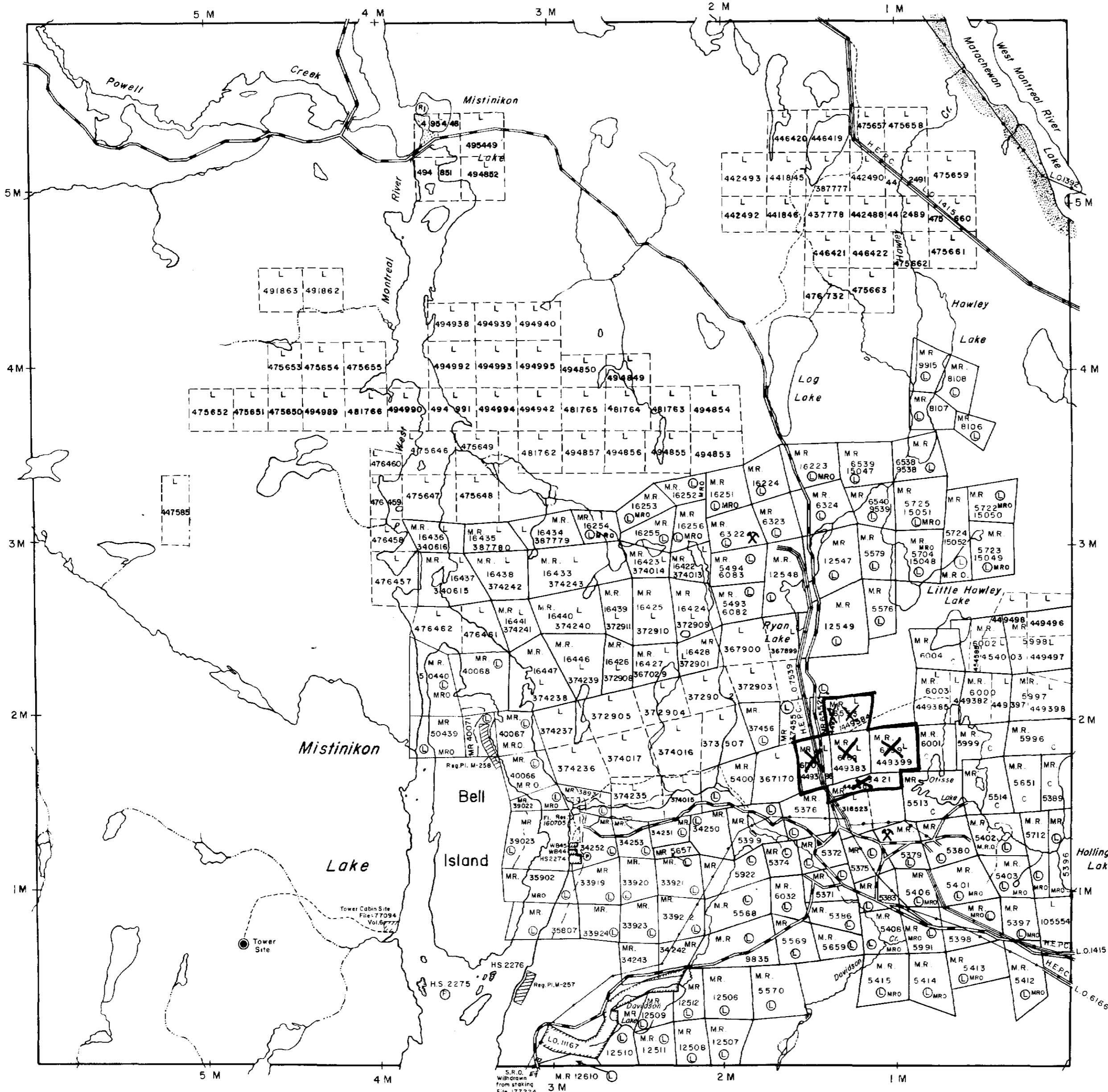
SURVEYS AND MAPPING
BRANCH

PLAN NO. **M.241**

ONTARIO
MINISTRY OF NATURAL RESOURCES
SURVEYS AND MAPPING BRANCH

Bannockburn Twp. (M.207)

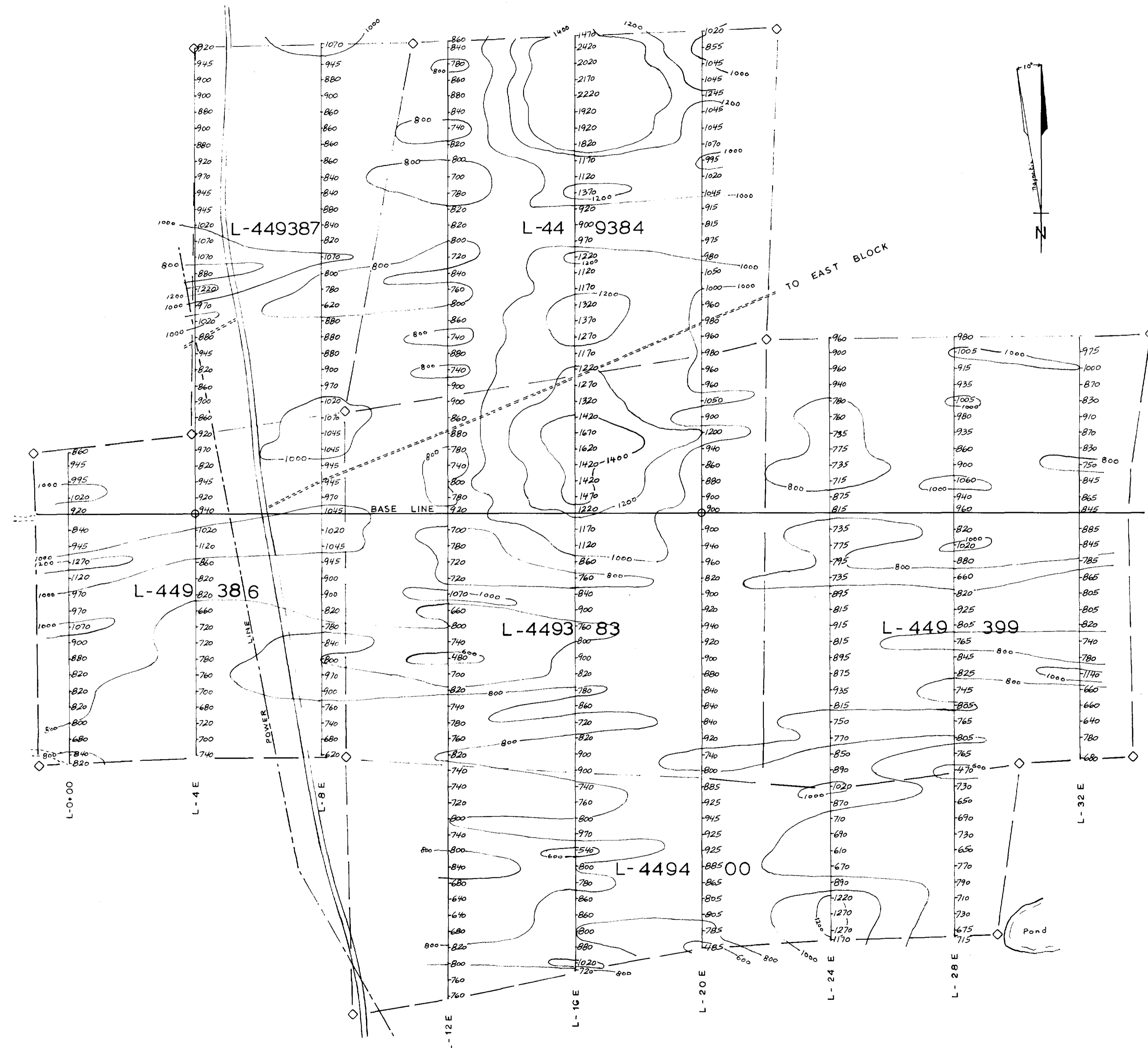
Cairo Twp. (M.210)



Yarrow Twp. (M.260)



41P15NE8245 2.2453 POWELL



PLAN No.1
 (WEST BLOCK)
 PROPERTY OF
DR. F. YANDEL, JR., M.D.
 POWELL TOWNSHIP
 NORTHERN ONTARIO
MAGNETIC SURVEY DATA
 Scale: 1" = 200' June, 1977

- LEGEND**
- 780
 - 1140
 - 660
 - 640
 - READINGS OBTAINED BY USING A FLUXGATE MF-1 MAGNETOMETER AT STATIONS ESTABLISHED ON PICKET LINE
 - MAGNETIC CONTROL STATION
 - ══ MOTOR ROAD (HIGHWAY 566)
 - BUSH ROAD
 - ◇— CLAIM POST AND CLAIM LINE
 - MAGNETIC CONTOUR
 - BELOW 600
 - 600 to 800
 - 800 to 1000
 - 1000 to 1200
 - 1200 to 1400
 - OVER 1400



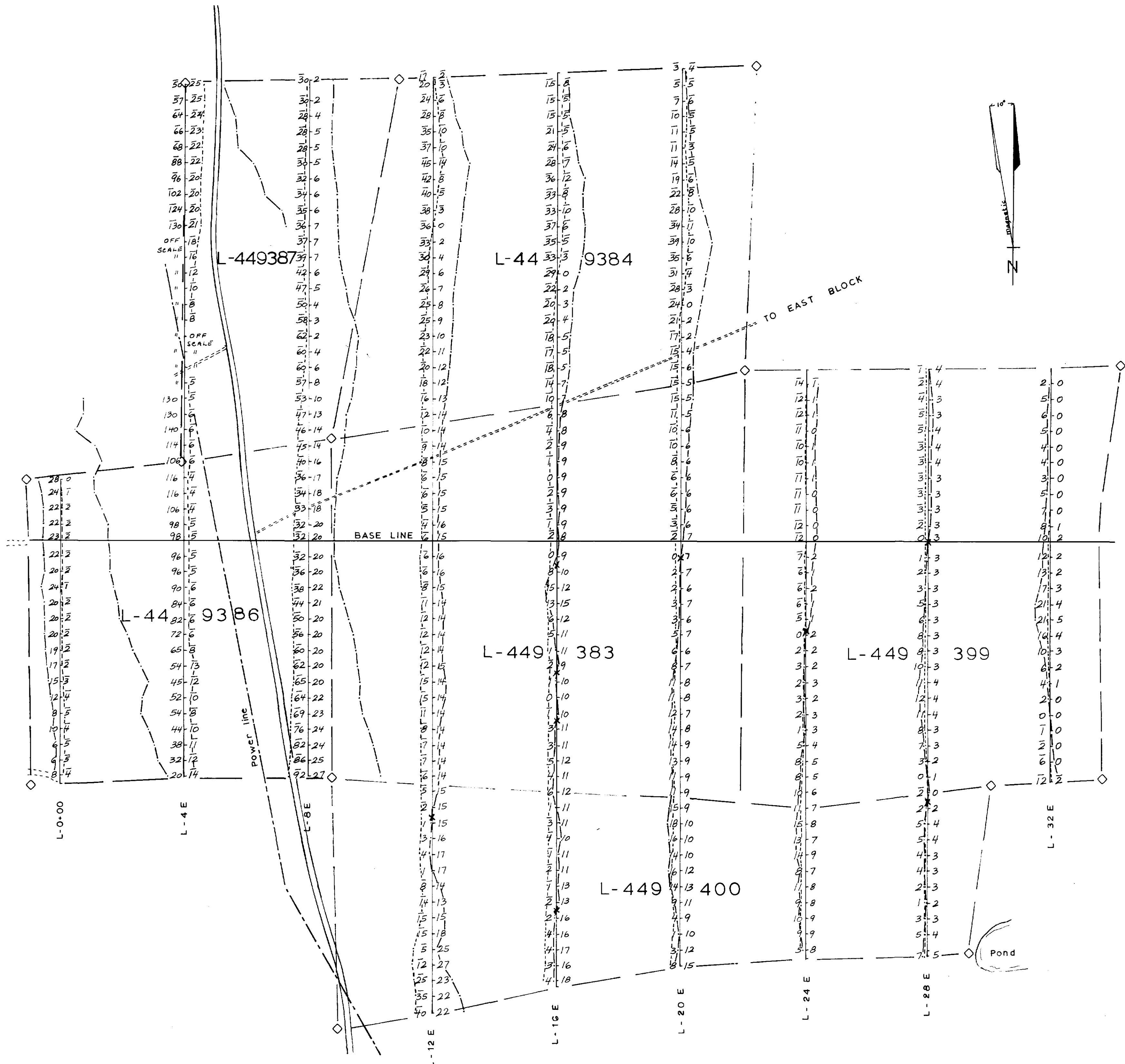
41P15NE8245 2.2453 POWELL

PLAN No.2
(WEST BLOCK)
PROPERTY OF
DR. F. YANDEL, JR., M.D.
POWELL TOWNSHIP
NORTHERN ONTARIO
ELECTROMAGNETIC SURVEY DATA

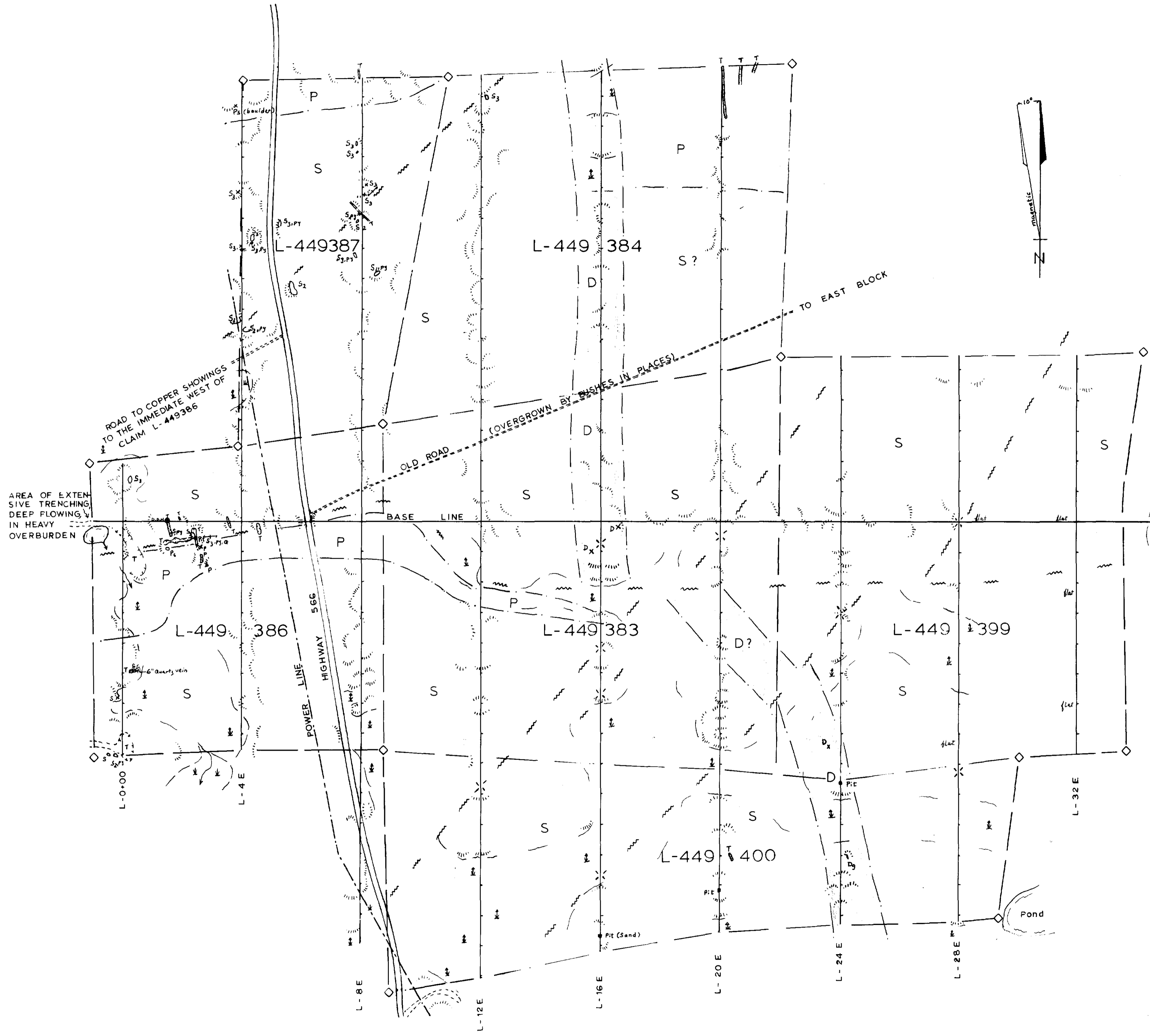
Scale: 1" = 200' June, 1977

LEGEND

- 2 | 0 READINGS OBTAINED BY USING A
- 5 | 1 RONKA EM-16 INSTRUMENT WITH
- 6 | 2 OPERATOR FACING NORTH AT 90°
- 5 | 0 FROM TRANSMITTER STATION NAA.
- IN-PHASE READINGS PLOTTED WEST,
- OUT-OF-PHASE READINGS PLOTTED
- EAST OF EACH STATION.
- CLAIM POST AND CLAIM LINE
- == HIGHWAY 566
- ==== BUSH ROAD
- - - IN-PHASE PROFILE
- · · · · OUT-OF-PHASE PROFILE
- PROFILES OF PLUS READINGS PLOTTED
- WEST, MINUS READINGS PLOTTED EAST
- OF PICKET LINE
- SCALE OF PROFILES: 1/8" = 10%
- x WEAK TO MARGINAL CONDUCTOR



PLAN No.3
 (WEST BLOCK)
 PROPERTY OF
 DR. F. YANDEL, JR., M.D.
 POWELL TOWNSHIP
 NORTHERN ONTARIO
 GEOLOGICAL SURVEY DATA
 Scale: 1" = 200' June, 1977



LEGEND

	CLAIM POST AND CLAIM LINE
	CUT AND CHAINED PICKET LINE
	BUSH ROAD
	AREA OF WOODED SWAMP OR LOW GROUND
	GRASSY MARSH AND OPEN SWAMP
	CREEK
	TRENCH
	OUTCROP
	STRIKE OF SHEARING WITH VERTICAL DIP
	INFERRED GEOLOGICAL BOUNDARY
	MAFIC INTRUSIVE ROCKS
	D DIABASE
	D ₁ GABBRO-DIABASE
	SILICIC INTRUSIVE ROCKS
	P SYENITE PORPHYRY
	P ₂ SYENITE
	SEDIMENTARY ROCKS
	S ₁ ARGILLITE AND GRAYWACKE
	S ₂ ARKOSE
	S ₃ CONGLOMERATE
	Pyrite MINERALIZATION
	QUARTZ VEINLETS
	INFERRED FAULT OR SHEAR
	WEAK TO MARGINAL VLF CONDUCTOR

CANA EXPLORATION CONSULTANTS LTD.



2.2453

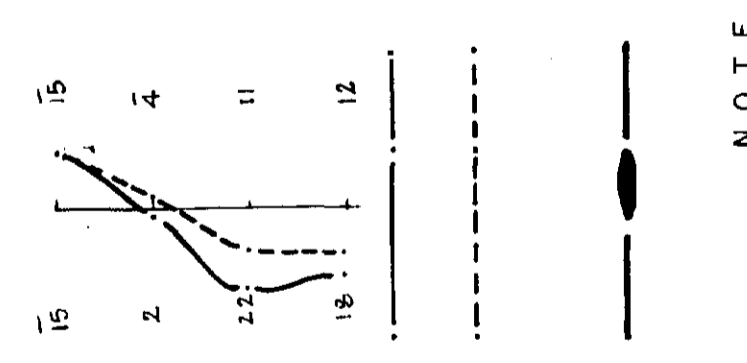
PLAN No. 1.

MAGNETIC AND VLF ELECTROMAGNETIC SURVEYS on claims of Dr. F. YANDEL, Jr. MD.

POWELL TOWNSHIP,
MATACHEWAN AREA, ONTARIO, CANADA.
Scale: 1 inch = 100 feet
Date: August 1975
CAMA EXPLORATION CONSULTANTS LIMITED



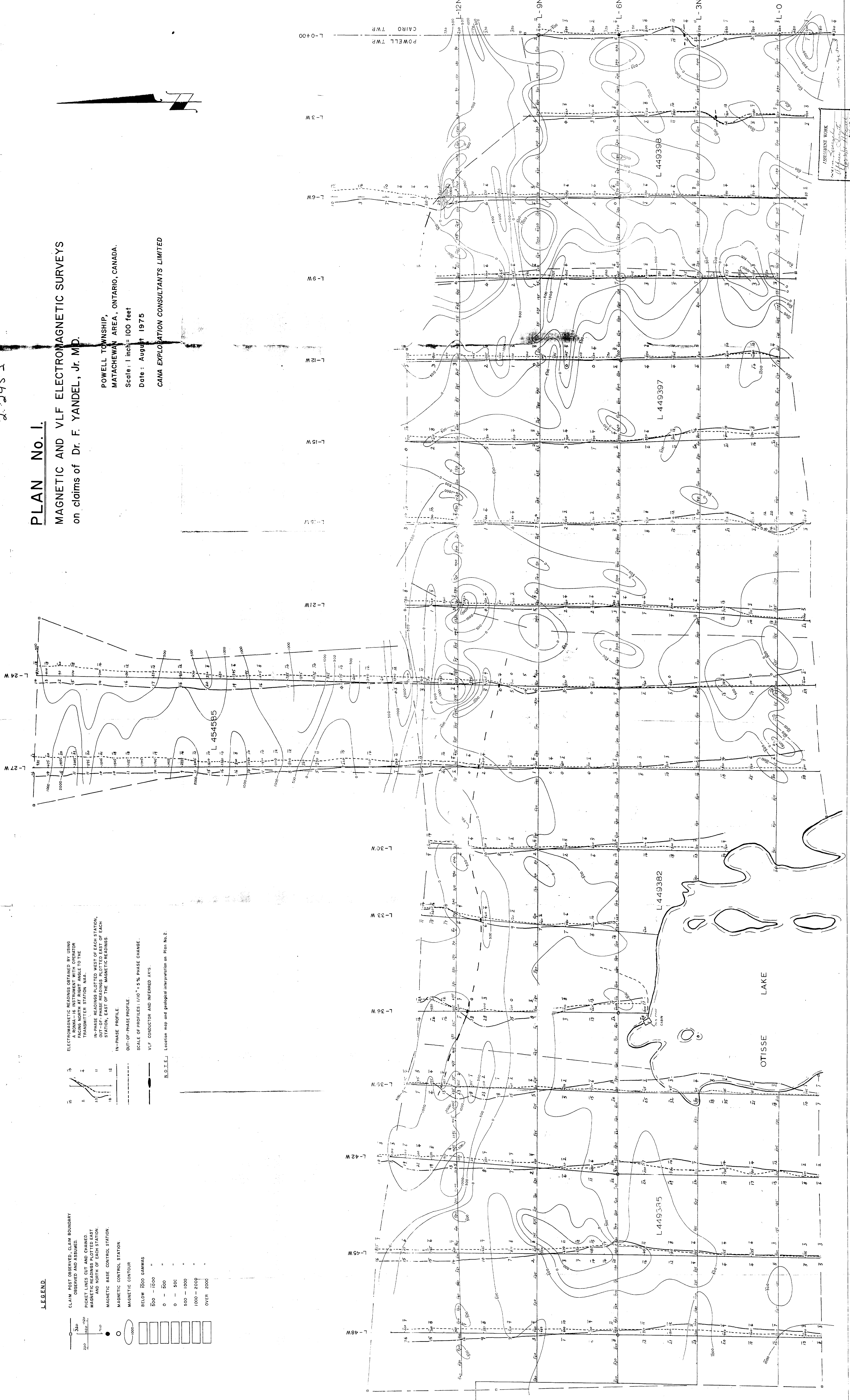
ELECTROMAGNETIC READINGS OBTAINED BY USING
MAGNETIC CONDUCTOR
PAGES NORTH AT RIGHT ANGLE TO THE
TRANSMITTER STATION. N.A.
IN-PHASE READINGS PLOTTED WEST OF EACH STATION.
OUT-OF-PHASE READINGS PLOTTED EAST OF EACH
STATION, EAST OF THE MAGNETIC REGION.
IN-PHASE PROFILE.
OUT-OF-PHASE PROFILE.
SCALE OF PROFILES: 1/10" = 5% PHASE CHANGE.
VLF CONDUCTOR AND INFERRED AXIS.



M.O.I.E.L. Location map and geological interpretation on Plan No. 2.

LEGEND

- CLAIM POST OBSERVED, CLAIM BOUNDARY OBSERVED AND ASSUMED.
- PICKET LINES CUT AND CHAINED.
- MAGNETIC READINGS PLOTTED WEST AND NORTH OF EACH STATION.
- MAGNETIC BASE CONTROL STATION.
- MAGNETIC CONTROL STATION.
- MAGNETIC CONTOUR
- BELOW 1000 GAMMAS
- 500 - 1000
- 0 - 500
- 0 - 500
- 500 - 1000
- 1000 - 2000
- OVER 2000



ASSESSMENT WORK
By: [Signature]
Checked: [Signature]
Date: [Date]

