



41P15NE8306 23 CAIRO

010

DIAMOND DRILLING

TOWNSHIP: CAIRO

REPORT NO: 23

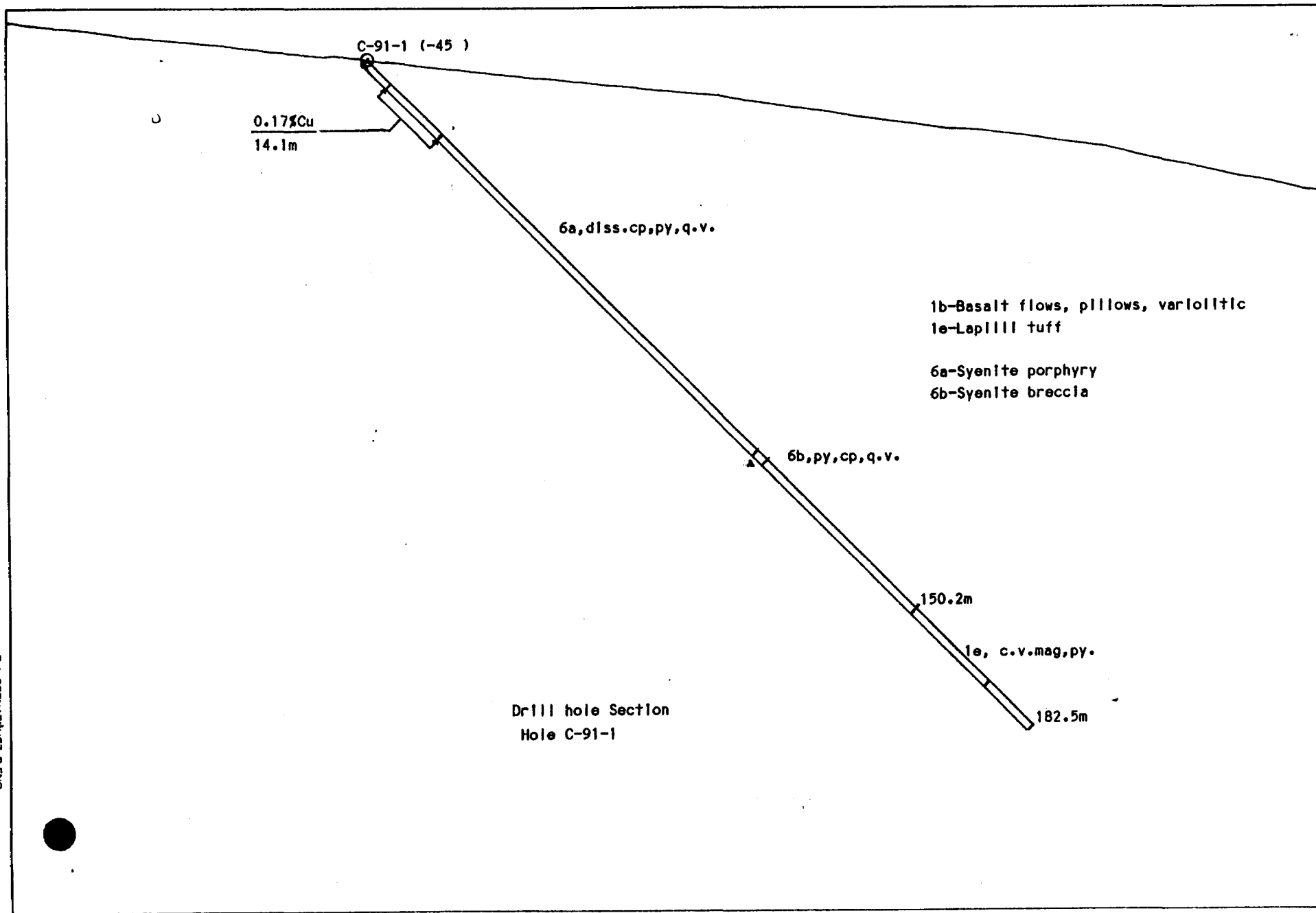
WORK PERFORMED FOR: BIRALGER RESOURCES LTD

RECORDED HOLDER: SAME AS ABOVE

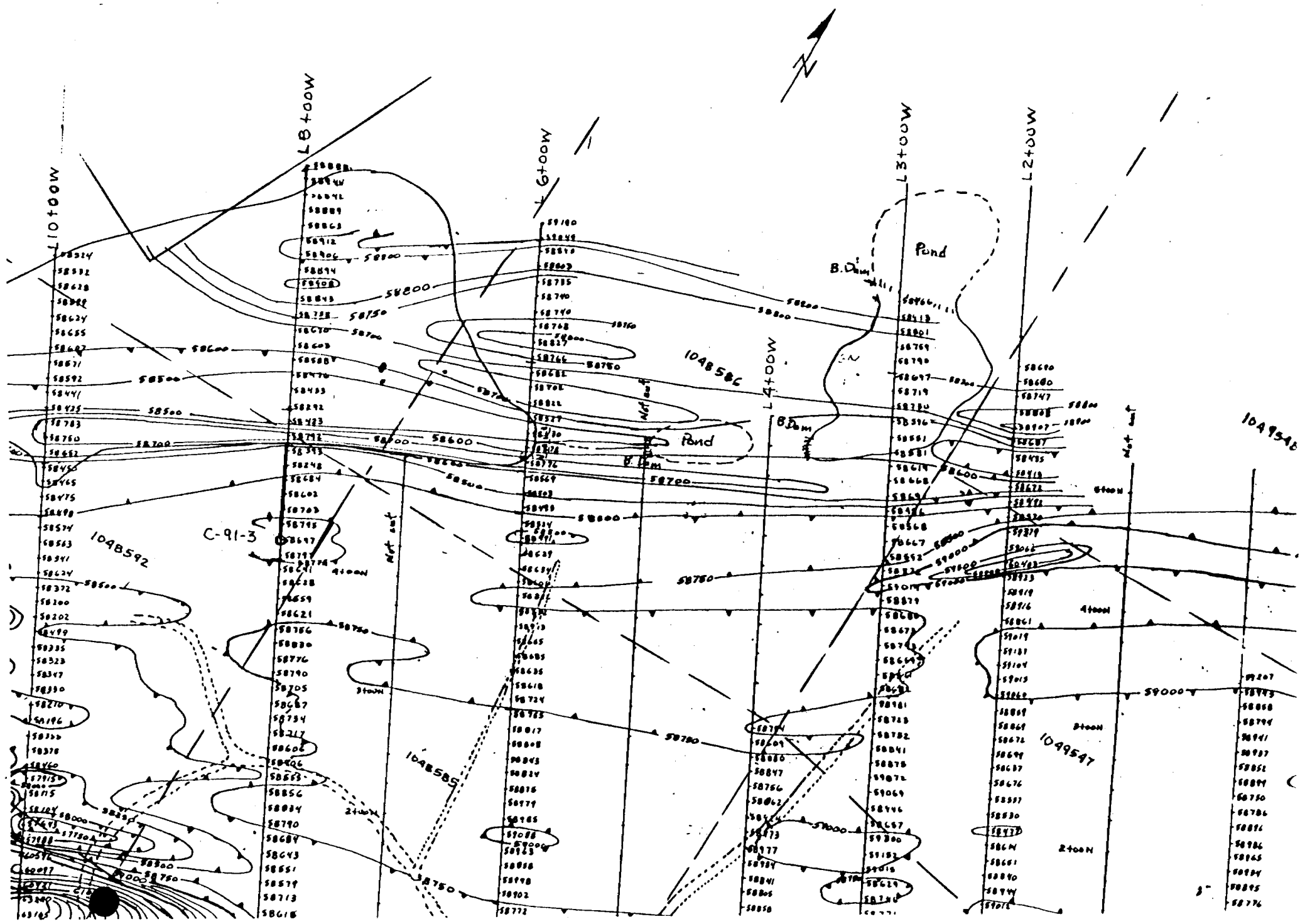
: OTHER

<u>CLAIM NO.</u>	<u>HOLE NO.</u>	<u>FOOTAGE</u>	<u>DATE</u>	<u>NOTE</u>
L-859204	C-91-1	182.5 M	JAN-FEB/91	(1)

NOTES: (1) #W9180.00191, FILED JULY/91



R.A. BERNATCHEZ, P. ENG.
CONSULTING GEOLOGIST



Magnetic Survey
Location of C-91-3

Scale 1" = 100 m.



Ministry of
Natural
Resources

**Diamond
Drilling
Log**

Fill in on
every page

Hole No. C-91-1	Page No. 1 of 2
Claim No. L - 859204	

Drilling Company COREX EXPLORATION INC.		Collar Elevation surface	Bearing of hole from true North Az 130°	Total Footage 182.5 m	Dip of Hole at Collar 45	Location of hole in relation to a fixed point on the claim.	Map Reference No.	Claim No. L - 859204
Date Hole Started Jan. 29/91	Date Completed Feb. 1/91	Date Logged Feb. 8/91	Logged by R.A. Bernatchez, P.Eng.		Fl.		Location (Twp., Lot, Con. or Lat. and Long.) Cairo Twp. Lat. 47°59' Long. 80°33'	
Exploration Co., Owner or Optionee BIRALGER RESOURCES LTD.		Date Submitted April 16/91	Submitted by (Signature) <i>R.A. Bernatchez, P.Eng.</i>		Fl.			
					Fl.			
					Fl.	Property Name		

Footage		Rock Type	Description Colour, grain size, texture, minerals, alteration, etc.	Planar Feature Angle *	Core Specimen Footage †	Your Sample No.	Sample Footage		Sample Length (m)	Assays †		
From	To						From (m)	To (m)		Au ppm	Ag ppm	Cu ppm
0.0	20.85	syenite porphyry	Hole collared in bedrock at surface. brick red, med grained, porphyritic, syenite mineralized with chalcocopyrite, pyrite and magnetite. Reddish colour due to hematization. Syenite also mineralized with veinlets of fluorite, quartz veinlets with chalcocopyrite. Total sulphide content about 1-3% with local concentration up to 5%. Syenite veins in colour from red, grey red, dark red.			1362	0.0	2.9	2.9	21	0.4	137
						1363	2.9	6.8	3.9	10	0.2	329
						1364	6.8	9.0	2.2	17	0.2	916
						1365	9.0	12.0	3.0	41	0.8	2570
						1366	12.0	13.25	1.25	82/99	1.0	1050
						1367	13.25	16.35	3.1	10	0.5	506
			0 - 9 m - red syenite			1368	16.35	17.9	1.55	48	0.8	1750
			9 - 12 m - grey-red syenite with cp, c.v., fluorite			1369	17.9	19.75	1.75	45	1.1	3230
			12 - 13.3 m - dark red with cp, py, 1-4% sulphides			1370	19.75	20.85	1.1	40	1.3	2590
			13.3 - 16.4 m - red syenite, minor py, cp			1371	20.85	22.35	1.5	10	0.8	518
			16.4 - 17.9 m - syenite, foliated			1372	22.35	24.0	1.65	Nil	0.2	39
						1373	24.0	26.85	2.85	14	1.0	217
20.85	32.0	syenite porphyry	grey and red, fine grained matrix with feldspar phenocrysts. Section contains 15-20% sulphides, good chalcocopyrite from 20.9 to 21.2m Strong silicified section, red colour from 24.0 to 32.0 m. Weakly foliated.			1374	26.85	29.85	3.0	17	0.4	148
						1375	29.85	32.5	2.65	14	0.8	173
						1376	32.5	35.5	3.0	28	0.6	296
						1377	35.5	38.5	3.0	41	0.3	443
32.0	41.2	syenite porphyry	red, med grained, porphyritic, massive. Syenite mineralized with disseminated grains and seams of pyrite and chalcocopyrite. Sulphide content 1 - 5%.			1378	38.5	41.2	2.7	10	0.1	97
						1379	41.2	44.5	3.3	86	0.9	83
						1380	44.5	47.5	3.0	27	0.2	80
41.2	41.9	augite syenite	red-grey, medium grained, biotite and minor pyrite grains, Foliation 45 - 50° to core axis.			1381	47.5	50.5	3.0	154/165	0.7	517
						1382	50.5	53.5	3.0	55	0.3	292
						1383	53.5	56.5	3.0	72	0.5	183
41.9	107.0	syenite porphyry	red, med grained, porphyritic, with pervasive disseminated sulphides of pyrite and minor chalcocopyrite. Syenite fractured, with frequent quartz-calcite veinlets mineralized with chalcocopyrite, pyrite, tourmaline, chlorite along seams. Sections strongly silicified. Sulphide content varies from 1-10%.			1384	56.5	59.5	3.0	51	0.4	151
						1385	59.5	62.5	3.0	38	0.4	167
						1386	62.5	65.5	3.0	45	0.5	168
						1387	65.5	68.5	3.0	27	0.6	143
						1388	68.5	71.5	3.0	24	0.6	172
107.0	109.7	brecciated syenite	grey, green and pink fragments. Grey sections are porphyritic and well mineralized with sulphides 4 - 8%. Scattered quartz-ankerite and quartz tourmaline veining. Minor pyrite and chalcocopyrite in veinlets.			1389	71.5	74.5	3.0	48/55	0.6	224
						1390	74.5	77.5	3.0	27	0.6	175
						1391	77.5	80.5	3.0	21	0.5	133
						1392	80.5	83.5	3.0	24	0.6	110
						1393	83.5	86.5	3.0	10	0.3	68
						1394	86.5	89.5	3.0	34	0.1	135



**Diamond
Drilling
Log**

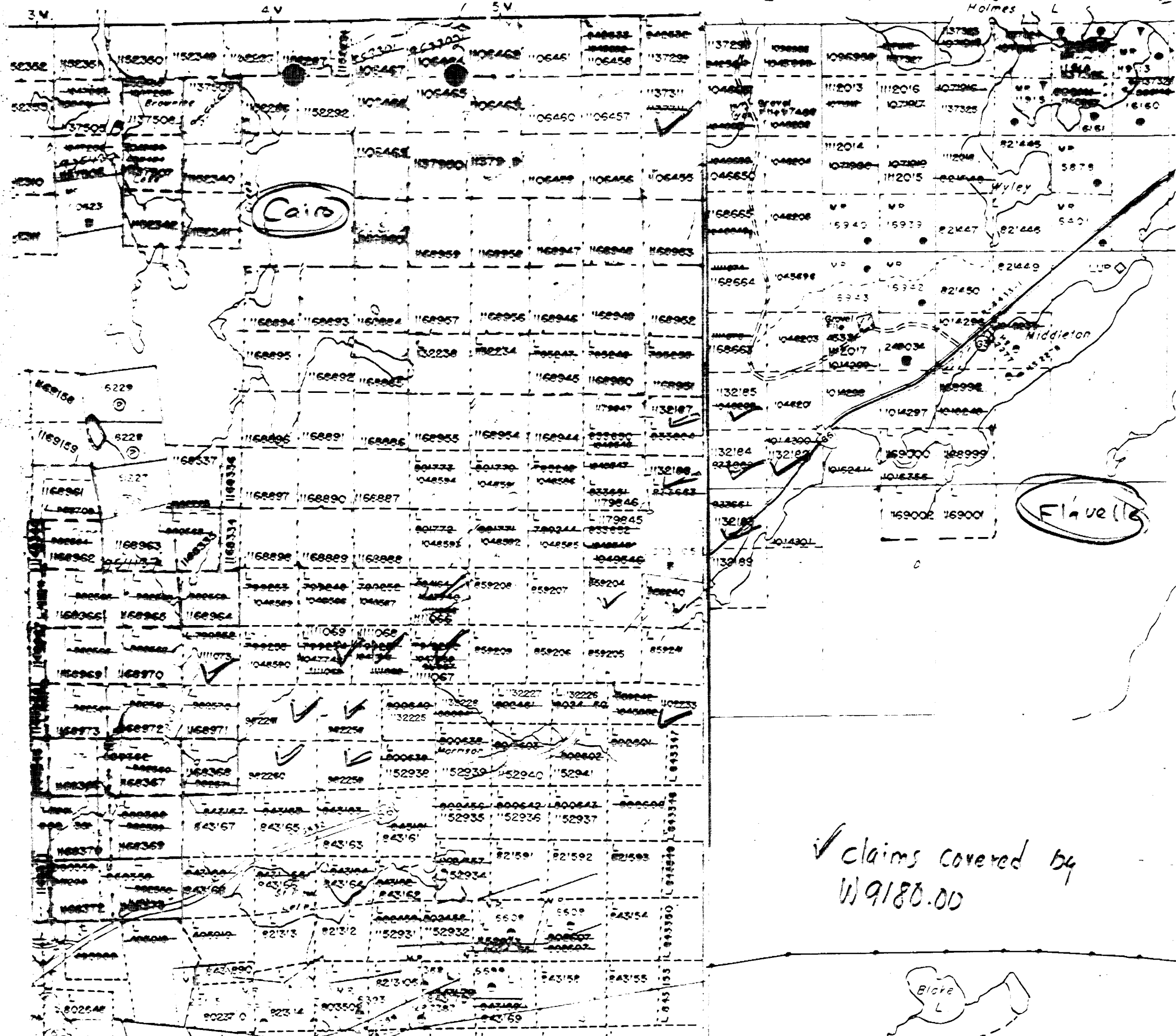
Fill in on
every page

Drilling Company		Collar Elevation	Bearing of hole from true North	Total Footage	Dip of Hole at Collar	Location of hole in relation to a fixed point on the claim.	Map Reference No.	Claim No.	
Date Hole Started	Date Completed	Date Logged	Logged by		FL		Location (Twp., Lot, Con. or Lat. and Long.)		
Exploration Co., Owner or Options		Date Submitted	Submitted by (Signature)		FL				
					FL		Property Name		

Footage		Rock Type	Description Colour, grain size, texture, minerals, alteration, etc.	Planar Feature Angle *	Core Specimen Footage †	Your Sample No.	Sample Footage		Sample Length	Assays †		
From	To						From	To				
109.7	116.2	altered syenite porphyry	beige, med grained, mineralized with sulphides throughout as disseminated grains and seams. Foliated 40° to 50° to core axis. Abundant chloritic seams with minor pyrite.			1395	89.5	92.5	3.0	27	0.1	101
						1396	92.5	95.5	3.0	21	0.1	124
						1397	104.5	107.0	2.5	10	0.1	76
						1398	107.0	109.6	2.6	24	0.2	35
116.2	150.2	augite syenite porphyry	red-grey, med grained, porphyritic, mineralized with 3 - 5% sulphides. Silicified section red due to hematization. Porphyry contains pyrite, chalcopyrite and molybdenite.			1399	109.6	113.5	3.9	21/38	0.4	153
						1400	113.5	116.0	2.5	10	0.3	56
						51	116.0	118.3	2.3	14	0.7	37
						52	118.3	120.0	1.7	10	0.5	35
150.2	170.5	mafic lapilli tuff	dark to light green to beige sections, fine grained, streaked fragments. Foliated 30 - 50% to core axis. Pervasively mineralized with magnetite as disseminated grains and seams. Magnetite content 1 - 20%.			53	120.0	122.5	2.5	Nil	0.4	38
						54	122.5	125.5	3.0	10	0.4	137
						55	125.5	128.5	3.0	17	0.3	42
						56	128.5	130.5		Nil	0.2	65
170.5	182.5	pillowed basaltic flows, variolitic	green-grey, fine grained, variolitic rims, minor pyrite, chloritic.			57	130.5	133.0	2.5	10	0.6	74
						58	133.0	133.4	0.4	103/106	1.8	149
						59	133.4	135.8	1.4	10	0.6	81
						60	135.8	137.5	1.7	14	1.1	66
						61	137.5	140.5	3.0	10	0.5	73
						62	140.5	143.5	3.0	Nil	0.4	113
						63	143.5	145.0	1.5	Nil	0.5	24
						64	145.0	146.5	1.5	10	0.4	21
						65	146.5	148.5	2.0	Nil	0.4	51
						66	148.5	150.2	1.7	17	0.7	71
						67	150.2	152.5	2.3	27/41	0.4	307
						68	152.5	155.7	1.5	10	0.3	311
						69	155.5	155.7	0.2	24	0.3	327

* For features such as foliation, bedding, schistosity, measured from the long axis of the core.

† Additional credit available. See Assessment Work Regulations



✓ claims covered by
W 9180.00

Blake L

DOCUMENT No.
W9180-00191



41P15NE8306 23 CAIRO

900

Mining A

Name and Postal Address of Recorded Holder

Prospector's Licence No.

Birdalger Resources Ltd
Box 1376 126 Willow Rd Atikokan Ontario, POT 1C0
CAIRO

T-4775

Summary of Work Performance and Distribution of Credits

Total Work Days Proclaim	Mining Claim			Work Days Cr.	Mining Claim			Work Days Cr.	Mining Claim			Work Days Cr.
	Prefix	Number	Work Days Cr.		Prefix	Number	Work Days Cr.		Prefix	Number	Work Days Cr.	
598.8 496.2	L	1132182	20	L	982258	40	L	111069	20			
		1132183	20		982259	40		111073	20			
		1132184	20		982260	40		1137311	20			
		1132185	20		982261	40		859241	16.2			
		1132186	20		1102233	60						
		1132187	20		111066	20						
		1132188	20		111067	20						
		1132189	20		111068	20						

All the work was performed on Mining Claim(s): *L 859204* *859240* *89*

Required Information eg: type of equipment, Names, Addresses, etc. (See Table Below)

D.O.H - C-91-1 548.8 feet. BQ core size. BANK EXCESS

Drilled by Corex Explorations Inc.
215 St Laurent, Suite 108
St Eustache, Quebec, J7P 4W4
Date drilled: Jan 29 - Feb 1 1991

298.8 days

RECEIVED
LAKELAKE
MINING DIVISION
Apr 19 1991

Date of Report: *April 16 1991*
Recorded Holder or Agent (Signature): *R.A. Bernatchez*

Certification Verifying *File of Work*

I hereby certify that I have a personal and intimate knowledge of the facts set forth in the Report of Work annexed hereto, having performed the work or witnessed same during and/or after its completion and the annexed report is true.

Name and Postal Address of Person Certifying
R.A. Bernatchez Box 1376 126 Willow Rd (207) 597-4526
Atikokan Ont. POT 1C0

Date Certified: *April 16 1991*
Certified by (Signature): *R.A. Bernatchez*

Table of Information/Attachments Required by the Mining Recorder

Type of Work	Specific information per type	Other information (Common to 2 or more types)	Attachments
Manual Work	Nil	Names and addresses of men who performed manual work/operated equipment, together with dates and hours of employment.	Work Sketch: these are required to show the location and extent of work in relation to the nearest claim post.
Shaft Sinking, Drifting or other Lateral Work			
Compressed air, other power driven or mechanical equip.	Type of equipment	Names and addresses of owner or operator together with dates when drilling/stripping done.	Work Sketch (as above) in duplicate
Power Stripping	Type of equipment and amount expended. Note: Proof of actual cost must be submitted within 30 days of recording.		
Diamond or other core drilling	Signed core log showing: footage, diameter of core, number and angles of holes.		
Land Survey	Name and address of Ontario land surveyor.	Nil	Nil

768 (81/3)

For Office Use Only

Work Assignments

L 859204 *Birdalger Resources Ltd.* 397.2 3179.5
859240 " " 99.2 36.7

(X20) ~~25~~ *397.2* day performed {859204
99.2 " " {859240

ONTARIO GEOLOGICAL SURVEY

ASSESSMENT FILES

MAY 28 1991

RECEIVED