



41P15NE8369 20 CAIRO

010

DIAMOND DRILLING

TOWNSHIP: CAIRO TWP.

REPORT NO: 20

WORK PERFORMED FOR: Regent Rock Resources Inc.

RECORDED HOLDER: Same as Above [xx]
: Other []

<u>Claim No.</u>	<u>Hole No.</u>	<u>Footage</u>	<u>Date</u>	<u>Note</u>
892136	88-1	99.67m	Nov/88	(1)(2)
	88-2	151.49m	Nov/88	(1)(2)
	88-3	130.15m	Nov/88	(1)(2)
892133	88-4	99.67m	Dec/88	(1)(2)
892134	88-5	99.67m	Dec/88	(1)(2)
	88-7	154.23m	Dec/88	(1)(2)
	88-8	154.23m	Dec/88	(1)(2)
892133	88-9	154.23m	Dec/88	(1)(2)
	88-10	154.23m	Dec/88	(1)(2)
	88-11	99.67m	Dec/88	(1)(2)

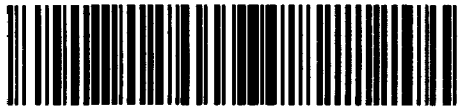
(1) W8908.066, date filed May/89

(2) Comparable to onep submission 0M88-6-C-252.
filed Jun/91

J. L. TINDALE & ASSOCIATES INC.

Suite 907 - 110 Erskine Avenue
Toronto, Ontario, Canada M4P 1Y4

Telephone
(416) 481-5781



41P15NE8309 20 CAIRO

020

SUMMARY REPORT

ON THE

REGENT ROCK RESOURCES INC.

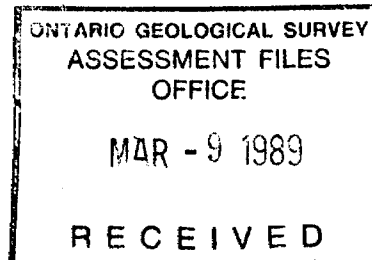
1988 DIAMOND DRILL PROGRAM

CAIRO TOWNSHIP PROPERTY

MATACHEWAN, ONTARIO

FOR


EXCALIBUR INTERNATIONAL CONSULTANTS LTD.



January 2, 1989

Toronto, Ontario

J. L. Tindale and Associates Inc.


Kenneth W. Johnson
Associate Geologist



41P15NE8309 20 CAIRO

020C

TABLE OF CONTENTS

	Page
Introduction	1.
Property Description, Location, Access	2.
History	5.
Description of the 1988 Drill Program	6.
Discussion of Drill Results	9.
Conclusions	10.
References	11.

LIST OF FIGURES

Location Map	3.
Claim Map	4.
Plan of Diamond Drilling (eastern sheet, 1:2500)	7.
Plan of Diamond Drilling (western sheet, 1:2500)	8.
Diamond Drill Section L8+00W (1:50 scale)	pocket
Diamond Drill Section L9+00W (1:50 scale)	pocket
Diamond Drill Section L12+00W (1:50 scale)	pocket

INTRODUCTION

On October 3, 1988, Mr. J. B. Boniwell, president of Excalibur International Consultants Ltd., 10 Hurontario St., Mississauga, Ontario, L5G 3G7, retained the firm of J. L. Tindale and Associates Inc. to supervise and subsequently prepare a summary report on an exploratory diamond drill program completed by Regent Rock Resources Inc., on their Cairo Township property in Matachewan, Ontario. The scope of the report is to discuss the exploration methods employed during the project and the results generated.

The program of exploration on the Regent Rock program was completed during the period November 24 to December 15, 1988, under the supervision of the author. This report is based upon the results of that program, as well as research of available data pertaining to the project area.

PROPERTY DESCRIPTION, LOCATION, ACCESS, PHYSIOGRAPHY

The Matachewan Area lies approximately 50 k.m. southwest of the town of Kirkland Lake, within the Larder Lake Mining Division in the Timiskaming District of north-central Ontario.

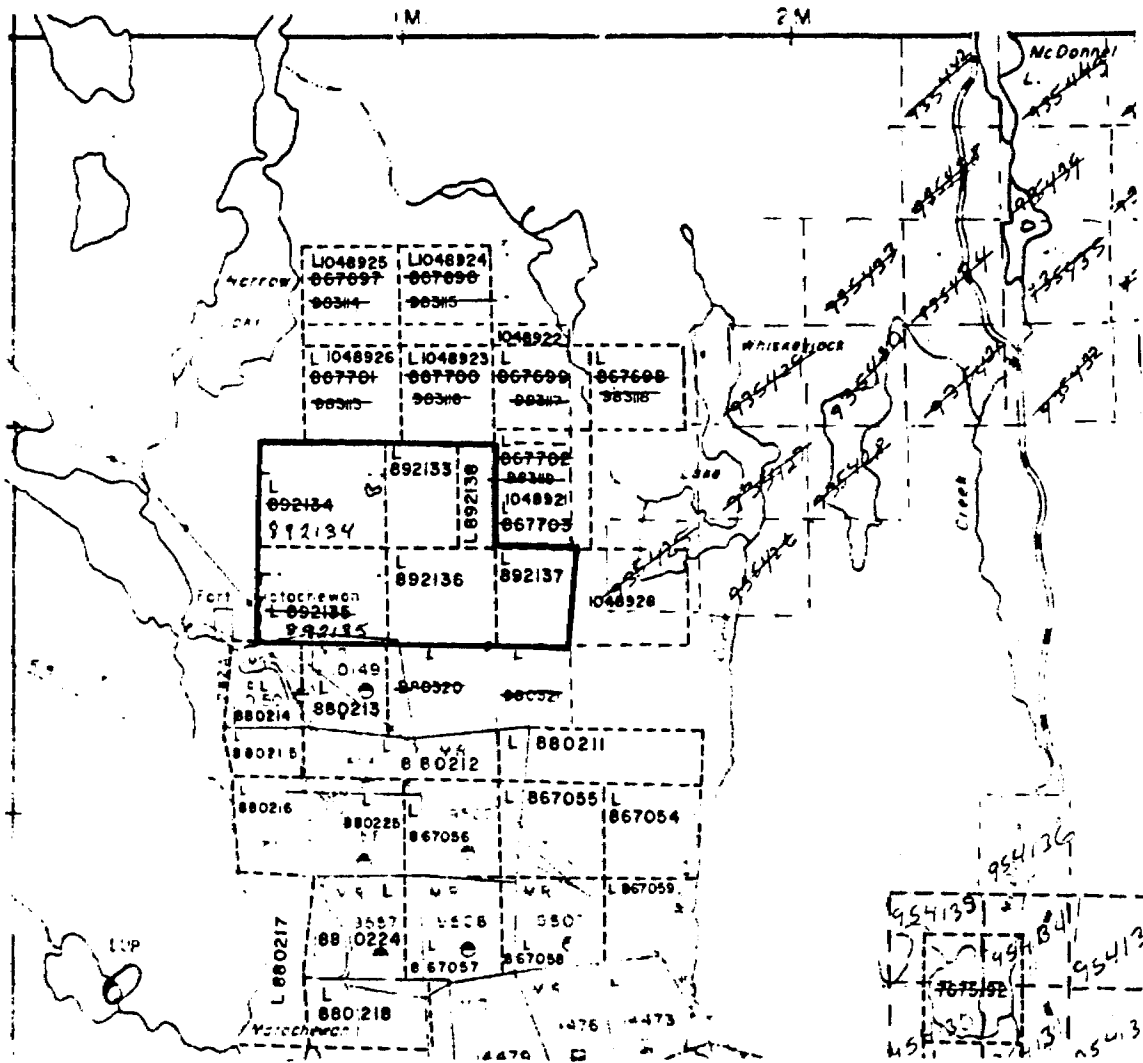
Access is provided via Highway 66 which connects the Village of Matachewan with Kirkland Lake. A gravel road turns north from Highway 66 just 5 km. east of Matachewan and provides access to the Matachewan Reserve approximately 10 km. further north. A sand trail extends to the northwest 1.5 km. from the junction of the reserve road and Highway 66, and although rough, provides access for a 4X4 vehicle to a point 2 km. south of the property boundary. A tractor trail then leads to the central portion of the property, a distance of approximately 2.5 km.

Regent Rock Resources' Cairo Township property is comprised of 6 unpatented contiguous mining claims situated in the northwestern sector of Cairo Township. The claims cover approximately 96 hectares and are identified as follows:

L 892133 to L 892138 inclusive; Cairo Township, Larder Lake Mining Division, Ontario.

The mining claims are registered in the name of Regent Rock Resources Inc., 425 University Ave., Toronto, Ontario, M5G 1T6.

Topographically, the area consists of south-trending depressions characterized by swampy creek-beds, surrounded to both the east and west by north-trending ridges rarely exceeding 30 metres in relief. Overburden generally consists of outwash deposits which can vary in thickness from 3 metres to 20 metres. Vegetation is mixed second growth comprised primarily of alders, birch and poplar along with stands of black spruce, cedar, balsam and jack-pine.



REGENT ROCK RESOURCES INC.

PROPERTY MAP

CAIRO TOWNSHIP-NORTHWESTERN PORTION

Scale 1cm=400m (approx.)

HISTORY

Exploration within the property area prior to 1975 has been poorly documented, and was probably limited to sporadic prospecting of conductive or magnetic areas defined through rudimentary geophysical surveys.

Exploration intensified in the Matachewan area in 1975 with the release by the O.G.S. of an airborne INPUT electromagnetic/magnetic survey of the Matachewan greenstone belt. Through an option agreement with the Matachewan Syndicate, Texasgulf Canada Ltd. completed a systematic exploration program over a 12 claim property situated in northwestern Cairo Township, encompassing the ground presently held by Regent Rock Resources Inc. The program consisted of linecutting, magnetic and electromagnetic surveys, geochemical traversing and geological mapping. In 1976 Texasgulf completed 4 diamond drill holes totalling 528 metres to test geophysical targets generated in the preceding ground surveys.

No further exploration was carried out until 1986 when Mr. F. Tagliamonte of North Bay staked 6 claims to cover strong linear airborne electromagnetic responses exhibited in the O.G.S. INPUT survey. Regent Rock Resources optioned the 6 claims from Tagliamonte in 1987, and in the following year completed linecutting, magnetic and electromagnetic VLF surveys over the entire claim area. Induced polarization was completed over a portion of the claim group as a preparatory stage to diamond drilling. In August 1988 Excalibur International Consultants Ltd. reviewed the results of the preceding geophysical surveys and recommended the completion of 11 diamond drill holes to test new mineral possibilities in the area.

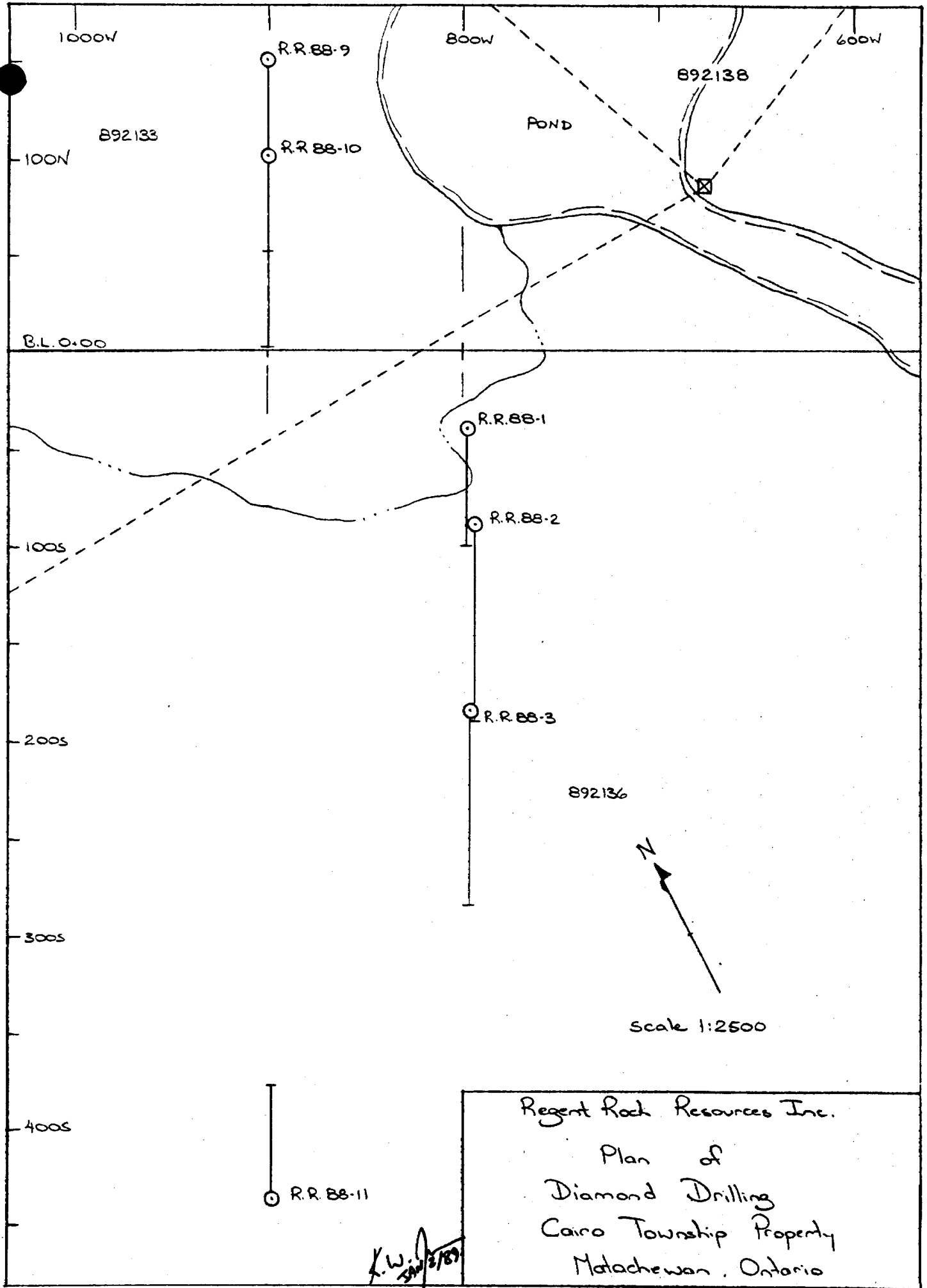
DESCRIPTION OF THE 1988 DIAMOND DRILL PROGRAM

A total of 1297.84 metres of diamond drilling was completed during the period of November 24 to December 15, 1988 by Heath and Sherwood Drilling Ltd. of Kirkland Lake, Ontario. The drilling was completed utilizing a B.B.S.-15A wireline diamond drill using B.Q.-sized tools which yield rock-core 36.5 mm. in diameter. The rock core on retrieval was placed in trays capable of holding 20 linear feet. The individual trays were then labeled and the rock lithologies logged and recorded with respect to their down-hole footages (in metres). Mineralized sections of core were split and sent for analysis in Kirkland Lake at Accurassay Laboratories Ltd. The remaining core trays were then transported for storage at a site situated along the trail into the property, at the southeastern bank of McDonnell Creek (47°58'15" * 80°36'45").

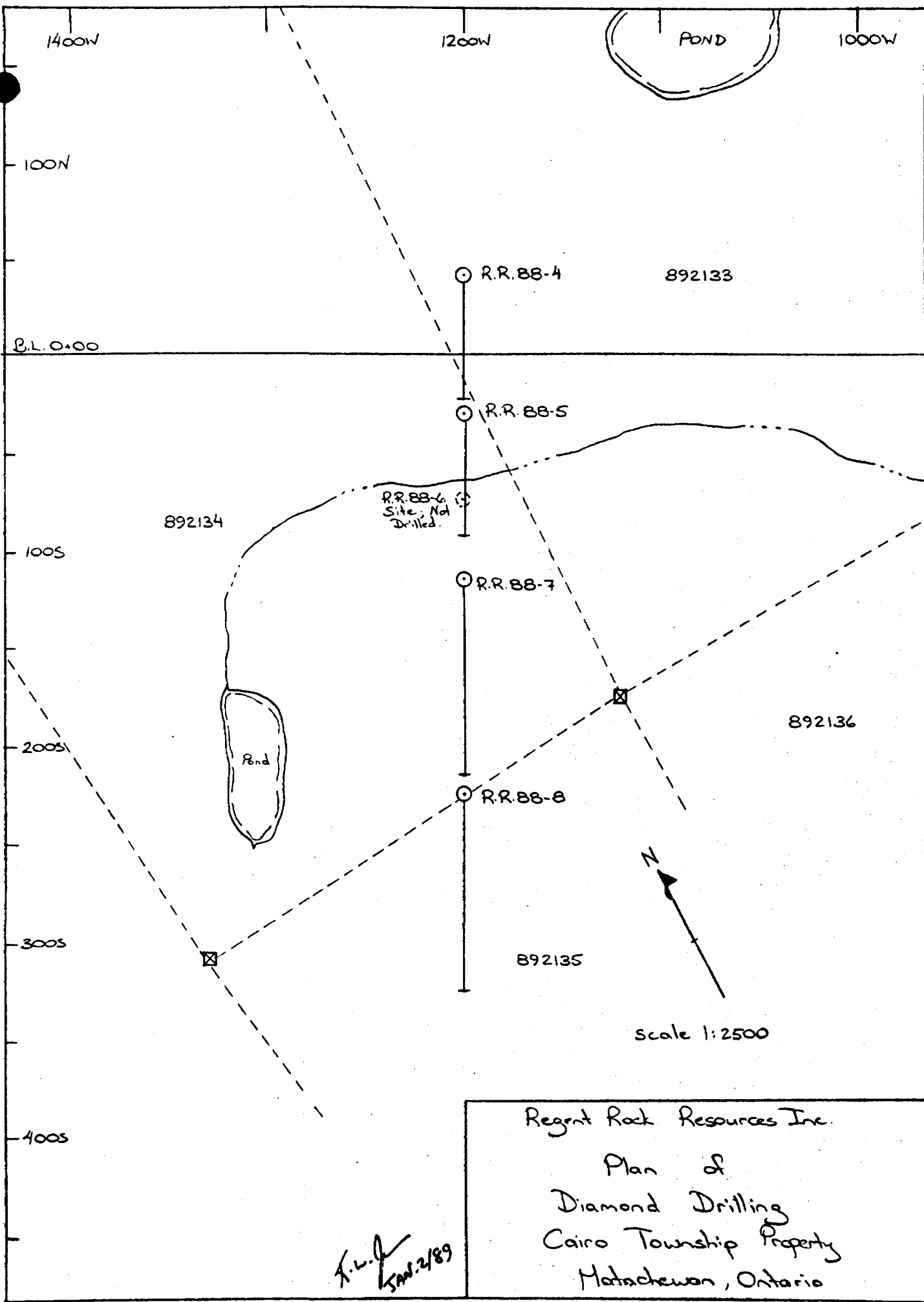
The individual hole locations, as recommended in the Excalibur report (August 1988) were spotted with respect to their grid coordinates, and surveyed for direction using a Brunton compass. A total of 10 holes were drilled numbered R.R.88-1 to R.R.88-5, and R.R.88-7 to R.R.88-11. Hole R.R.88-6, as recommended by Excalibur was not completed due to extremely wet and boggy surface conditions combined with generally poor geological and analytical results generated in the surrounding drill holes. The drill hole locations and total lengths are tabled as follows:

<u>Claim No</u>	<u>HOLE NUMBER</u>	<u>GRID COORDINATES in metres</u>	<u>AZMUTH</u>	<u>ANGLE AT COLLAR</u>	<u>HOLE LENGTH</u>	
892 136	R.R.88- 1	7+97W X 0+40S	210°	-50°	99.67 m.	327
"	R.R.88- 2	7+93W X 0+85S	210°	-50°	151.49 m.	497
"	R.R.88- 3	7+95W X 1+82S	210°	-50°	130.15 m.	427
892 133	R.R.88- 4	12+00W X 0+40N	210°	-50°	99.67 m.	327
892 134	R.R.88- 5	12+00W X 0+30S	210°	-50°	99.67 m.	327
	R.R.88- 6	NOT DRILLED.				
892 134	R.R.88- 7	12+00W X 1+15S	210°	-50°	154.23 m.	506
892 134	R.R.88- 8	12+00W X 2+25S	210°	-50°	154.23 m.	506
892 133	R.R.88- 9	9+00W X 1+50N	210°	-50°	154.53 m.	507
892 133	R.R.88-10	9+00W X 1+00N	210°	-50°	154.53 m.	507
892 136	R.R.88-11	8+96W X 4+40S	030°	-50°	99.67 m.	327

4258



Regent Rock Resources Inc.
Plan of
Diamond Drilling
Cairo Township Property
Matatchewan, Ontario



DISCUSSION OF RESULTS

Regent Rock Resources' recent drill program tested 4 separate areas of anomalous geophysical responses outlined in the previous surveys. Drill holes numbered R.R.88-1 to R.R.88-3 tested a NW-trending electromagnetic anomaly which possesses a coincident polarization response located in the south quarter of the property. A strong horizontal loop electromagnetic anomaly situated immediately north of the NW-trending zone, and striking to the east-northeast, was found to be caused by a 15 metre-wide unit of pyrrhotite-bearing graphitic iron formation. South of this graphitic schist, and forming the footwall of the formation is a thick (>200 m.) sequence of clastic sediments with interbeds of graphitic argillites. No significant analytical values were derived from this target area. The presence of the interbedded graphitic horizons would certainly cause the broad polarization anomalies typical in this area.

Holes R.R.88-4 to R.R.88-8 were also completed in a fence pattern to test broadly anomalous conditions which dominate the entire of L12+00W south of the baseline. In every case drilling intersected a thickly interbedded sequence of fine-grained clastic sediments with thin (<0.5 m.) bands of graphitic argillites. The graphitic bands exhibit up to 85% graphite with trace to 5% disseminated pyrite. Again no anomalous analytical values in gold could be derived from this area.

The disappointing results generated to this stage in the drill program necessitated deviation from the planned program as tabled in the Excalibur report. Planned holes 88-9 and 10 were relocated to test an area of extremely high resistivity responses (100308 ohm-m) which extends to the northwest over a distance of 200 metres. Chargeabilities were only slightly anomalous, and when normalized were quite flat, as are the magnetic responses for the area. Diamond drilling in a fence of two holes bisecting the centre of the anomaly intersected a thick, massive sequence of pillowed andesite flows. The massive, and undeformed/unaltered nature of the rock unit may be the cause of the abnormally high resistivity responses.


Drill hole R.R.88-11 was drilled as planned in the Excalibur report to test a region of low magnetic responses in the south of the property. Coincident induced polarization responses indicated the presence of a possible mineralized fault structure. The hole, drilled grid north so as not to be influenced by a diabase dyke to the west, intersected 99 metres of clastic sediments with interbeds of graphitic argillite and siltstone.

CONCLUSIONS

Regent Rock Resources completed 1297.84 metres of diamond drilling in 10 holes and successfully accounted for anomalous geophysical results generated within four separate areas on their Cairo Township property. In every case the presence of graphite was determined as the source of the anomalous geophysical responses. No significantly anomalous values in gold could be determined within any of the rock units intersected during the drill program.

Respectfully submitted,

J. L. Tindale and Associates Inc.



Kenneth W. Johnson
Associate/Geologist

January 2, 1989

REFERENCES

Boniwell, J.B.

1988 Geophysical Results From the Tagliamonte Claims, Cairo Township, Ontario; for Regent Rock Resources Inc.; Excalibur International Consultants Ltd. files., private report.

1988 Results of IP Traversing on the Tagliamonte Claims, Cairo Township, Matachewan, Ontario; for Regent Rock Resources Inc., Excalibur International Consultants Ltd., private report.

McLeod, H.D.

1987 Report on the Cairo Township Mineral Prospect, Cairo Township, Matachewan Area, Ontario; for Regent Rock Resources Inc., private report.

DIAMOND DRILL RECORD

J. L. TINDALE & ASSOCIATES INC.

Suite 907 - 110 Erskine Avenue
Toronto, Ontario, Canada M4P 1Y4

NAME OF PROPERTY Regent Rock Resources - Cairn Twp.
 HOLE NO. R.R. 88-1 LENGTH 99.67 metres
 LOCATION Regent Rock Main Grid; Claim #892136; Cairn Twp
 LATITUDE 7+97 W DEPARTURE 0+40 m.S.
 ELEVATION _____ AZIMUTH 210° DIP -50°
 STARTED November 24 FINISHED November 25, 1988.

FOOTAGE	DIP COR.	AZIMUTH	FOOTAGE	DIP	AZIMUTH
45m	52°				
99m	49°				

HOLE NO. 88-1 SHEET NO. 1

REMARKS Casing Pulled From Hole*
 *N.B.: 39 feet of casing lost in hole, twisted off on pulling.

LOGGED BY K. W. Johnson

FOOTAGE metres		DESCRIPTION	SAMPLE			ASSAYS					
FROM	TO		NO.	% SULPH IDES	FOOTAGE			A. % Pb	%	OZ/TON	OZ/TON
					FROM	TO	TOTAL				
0.0	9.75	Casing in Overburden; sand, gravel.	17201		9.75	10.75	1.0	131			
9.75	10.75	Fault/Breccia Zone - annealed fault zone; megacrystic breccia texture; moderately carbonated with 5% white calcite along thin fractures; 30 to 35% chlorite along irregular partings; graininess of subangular quartz fragments suggest felsic to granitic host; trace to 2% very fine perite evident along thin chloritic fracture fillings and partings; trace to 1% red, earthy-hematite evident growths.									
10.75	15.50	Ground and Broken Core - predominantly mafic volcanic origin.									
15.50	30.80	Andesite Flow. - very fine grained, olive green in colour;									

ONTARIO MINISTRY OF SURVEY
ASSESSMENT FILES
OFFICE
MAR - 9 1989
RECEIVED

LANGRISH - TORONTO - 366-1111

DIAMOND DRILL RECORD

NAME OF PROPERTY Regent Rock Resources Inc. - Cairn Top
 HOLE NO. R.R. 88-1 SHEET NO. 2

FOOTAGE		DESCRIPTION	SAMPLE			ASSAYS				
FROM	TO		NO.	% SULPHIDES	FOOTAGE		Au	Ag	02. TON	01 TON
				FROM	TO	TOTAL	ppb			
		5 to 8% calcitic carbonate along very thin fractures throughout section; matrix massive; fracture irregular at 35 to 40° to CIA; occasional fracture of quartz-carbonate up to 0.10 m in width.								
		16.15 to 16.27 } quartz-carbonate fractures								
		22.77 to 22.79 } filling at 40° to CIA.								
30.80	32.00	Breccia Zone - brittle fracturing of sericitized andesitic flows; buff-brown fine-grained sub-angular clasts to 1.5 cm diameter surrounded by thin chloritic partings; up to 5% iron-carbonate evident along late-stage fractures; black, graphitic zone at lower-end of section.								
		31.62 to 32.00: fine grained, massive black schist with 5% iron-carbonate along late fractures; moderately hard suggesting low graphite content; scabrous black; non-magnetic; schistosity at 40° to CIA marked by iron-carbonate alteration.	17202	30.80	32.00	12	16			

ONTARIO GEOLOGICAL SURVEY
 ASSESSMENT FILES
 OFFICE
 MAR - 9 1989
 RECEIVED

NGRIDGES - ONTO - 366-1168

DIAMOND DRILL RECORD

NAME OF PROPERTY Regent Rock Resources Inc. - Cairo Twp
 HOLE NO. RR-88-1 SHEET NO. 3

FOOTAGE		DESCRIPTION	SAMPLE			ASSAYS					
FROM	TO		NO.	% SULPHIDES	FOOTAGE		Au	%	OZ. TON	OZ. TON	
					FROM	TO	TOTAL	ppb			
32.00	40.65	Porphyritic Andesite Flows. - as previous flow; 5% fine "shards" of calcite porphyroblasts disseminated throughout sequence; within olive-green massive matrix	17203		40.00	40.65	0.65	12			
40.65	40.85	Graphitic Breccia Zone - short breccia zone exhibiting rounded quartz-clasts within a fine-grained matrix; bands of massive graphite up to 15 cm at 55° to CIA with thin fractures or stringers parallel to graphite bands at 2%.	17204		40.65	40.85	0.20	13			
40.85	60.25	Dioritic Intrusive - appears gradational and similar in composition from overlying andesite flows; down-hole exhibits a more intrusive, medium-grained texture grading from greenish hue to slate grey in colour; some sections mildly porphyritic with 20% rounded indistinct white feldspar; cut by 3% thin chloritic fractures; trace pyrite	17205		40.85	41.10	0.25	9			

ONTARIO GEOLOGICAL SURVEY
 ASSESSMENT FILES
 OFFICE
 MAR - 9 1989
 RE-FILED

NGRIDGES - ONTARIO - 366-1168

DIAMOND DRILL RECORD

NAME OF PROPERTY Regent Rock Resources Inc - Cairo Twp.
 HOLE NO. RR88-1 SHEET NO. 4

FOOTAGE		DESCRIPTION	SAMPLE			ASSAYS				
FROM	TO		NO.	% SULPHIDES	FOOTAGE		A	%	OZ. TON	GT TON
					FROM	TO				
		fine-grained, lighter grey, siliceous porphyritic sections grade into fine-grained darker-grey sections suggesting flow structures; lithology could be coarser-grained andesite flow?; sharp lower contact at 80° to CIA, some graphitic material incorp. in intrusive								
68.25	82.90	Pyrrhotite-Bearing Graphitic Sediments	17206		67.50	68.30	0.80	8		
			17207		68.30	69.50	1.20	16		
			17208		69.50	71.00	1.50	13		
		- massive, fine grained and black graphitic	17209		71.00	72.50	1.50	16		
		sediments; non-platey graphite with chalky appearance on fresh cut; moderately hard scratches	17210		72.50	74.00	1.50	14		
		Black; 3% thin white quartz-carbonate fracture-fillings at random orientations throughout; 5% pyrrhotite evident in stringers and granules associated with carbonate-filled fractures.	17211		74.00	75.50	1.50	13		
			17212		75.50	77.00	1.50	12		
			17213		77.00	78.00	1.00	10		
			17214		78.00	78.50	0.50	20		
			17215		78.50	80.00	1.50	13		
		78.04 to 78.33: 40% quartz-carbonate in sheared graphitic sediments; 5% pyrrhotite associated.	17216		80.00	81.50	1.50	8		
		- at 81.5 graphite becomes more massive with less than 2% quartz-carbonate and pyrrhotite evident.								

ONTARIO GEOLOGICAL SURVEY
 ASSESSMENT FILES
 OFFICE
 MAR - 9 1969
 RECEIVE

GRIGGS - TORONTO - 366-1168

DIAMOND DRILL RECORD

NAME OF PROPERTY Regent Rock Resources Inc. - Cairo Twp.
HOLE NO. RR 88-1 SHEET NO. 5

MINIARIC GEOLOGICAL SURVEY
ASSESSMENT FILES
OFFICE
MAR - 9 1989

FOOTAGE		DESCRIPTION	SAMPLE			ASSAYS			
FROM	TO		NO.	% SULPH IDES	FOOTAGE FROM TO TOTAL	Au ppb.	%	OZ. TON	G/T ON
82.90	85.60	<p>Siliceous Diorite Intrusive - siliceous, light grey, brecciated diorite, similar to hanging wall diorite; cut by 15% very thin and randomly oriented chloritic fractures; up to 5% pyrite in irregular stringers and associated with thin quartz-carbonate-filled fractures; irregular lower contact.</p>	17217		83.00 84.50 1.50	9			
			17218		84.50 85.60 1.10	8			
			17219		85.60 87.20 1.60	36			
			17220		87.20 89.00 1.80	8			
85.60	87.20	<p>Graphitic Sediments - as previous with less than 5% quartz-carbonate and sulfides; sharp lower contact at 40° to C/A.</p>							
87.20	99.67	<p>Diorite Intrusive - similar in appearance to hanging wall unit, could again be coarse and site flow; 5% quartz-carbonate stringers at upper section, decreasing in amount down-hole; < 2% pyrite-pyrrhotite throughout section. 87.20 to 89.00: 5% quartz-carbonate stringers, 5% fine pyrite in stringers and dissemin.</p>							

VGRIGES - TORONTO - 366-1168

J.L. TINDALE & ASSOCIATES INC.

Consulting Geologists

DIAMOND DRILL RECORD

NAME OF PROPERTY Regent Rock Resources Inc. - Cairo Twp.
HOLE NO. RR 88-1 SHEET NO. 6

FOOTAGE		DESCRIPTION	SAMPLE			ASSAYS					
FROM	TO		NO.	% SULPHIDES	FOOTAGE			%	%	OZ. TON	GZ. TON
					FROM	TO	TOTAL				
		grades into more massive diorite down hole, grey to grey-brown, moderately hard									
9967		End of Hole									
		<i>[Signature]</i> November 26, 1988.									

ONTARIO GEOLOGICAL SURVEY
ASSESSMENT FILES
OFFICE
MAR - 7 1989
RECEIVED

INGRIDGES - TINDALE - ONTARIO - 366-1168

DIAMOND DRILL RECORD

J. L. TINDALE & ASSOCIATES INC.

Suite 907-110 Erskine Avenue
Toronto, Ontario, Canada M4P 1Y4

NAME OF PROPERTY Regent Rock Resources Inc. - Cairo Twp.
 HOLE NO. RR-2 LENGTH 151.49 metres.
 LOCATION Regent Rock Grid; Claim No. 892136 - Cairo Township
 LATITUDE 7+93m W DEPARTURE 0+85m S
 ELEVATION _____ AZIMUTH 210° DIP -50°
 STARTED November 26 FINISHED November 28, 1988.

FOOTAGE	DIP	AZIMUTH	FOOTAGE	DIP	AZIMUTH
48m	45°				
90.5m	48°				
149m	48°				

HOLE NO. RR-2 SHEET NO. 1
 REMARKS Casing Pulled from Hole

LOGGED BY K.W. Johnson

FOOTAGE metres		DESCRIPTION	SAMPLE			ASSAYS					
FROM	TO		NO.	% SULPHIDES	FOOTAGE		%	%	oz/ton	oz/ton	
					FROM	TO	TOTAL				
0.00	4.88	Casing in Overburden; Assessment File #11									
4.88	5.70	Broken Core - boulders; 40% Breccia (40% volcanic)									
5.70	50.40	Diorite - light grey to grey-green; fine grained massive intrusive; could be coarser-grained andesite. Also as in hole RR-1; 20% fine grained of chlorite disseminated throughout matrix and along thin random fractures; up to 5% quartz-carbonate veins and stringers up to 0.10 metre in width at 30° to 40° to CIA; some gradational dense-grey and massive sections evident; fracturing and brecciation more evident down-hole from 11.0 metres; trace pyrite along fractures and associated with quartz-carbonate veins.									
		11.40 to 11.50: graphitic seam @ 80° to CIA.									

ONTARIO GEOLOGICAL SURVEY
 ASSESSMENT FILE #11
 DEPICTE
 MAR - 9 1989

LANGRIDGE TORONTO - 366-1111

J.L.TINDALE & ASSOCIATES INC.

Consulting Geologists

DIAMOND DRILL RECORD

NAME OF PROPERTY Regent Rock Resources Inc. - Cairo Typ.

HOLE NO. R.R. 88-2

SHEET NO. 2

FOOTAGE		DESCRIPTION	SAMPLE			ASSAYS					
FROM	TO		NO.	% SULPH. IDES	FOOTAGE		A		02. TON	02. TON	
				FROM	TO	TOTAL	opt				
		270 to 28.0: Siliceous section with 20% quartz-carbonate veining at 30° to CIA; trace disseminated pyrite.	17221		27.00	28.00	1.00	9			
		- at 29.50 metres unit becomes more siliceous; buff-brown to grey in color but still retains fine intrusive texture and intermediate composition; fine fractures filled with pyrite at 2%.									
		35.00 to 38.00: 2% stringers or fracture-filling pyrite evident at 0° to 30° to CIA.	17222		35.00	36.50	1.50	18			
		46.30 to 50.40: becomes fine grained, intermediate composition; massive with <1% quartz-carbonate fracture-filling; slight foliation at 38° to CIA.	17223		36.50	38.00	1.50	41			
50.40	52.00	Breccia Zone - moderately brecciated zone within, grey siliceous diorite; up to 8% chlorite mats brecciation: trace perite; 10% quartz-carbonate.									

MINING GEOLOGICAL SURVEY
ASSESSMENT FILES
OFFICE
MAR - 9 1989
RECEIVED

GRIGGES - TO - 366-1168

DIAMOND DRILL RECORD

NAME OF PROPERTY Regent Rock Resources Inc. - Camp Top
 HOLE NO. RR 88-2 SHEET NO. 3

FOOTAGE		DESCRIPTION	SAMPLE			ASSAYS				
FROM	TO		NO.	% SULPH IDES	FOOTAGE		Au	%	OZ. TON	GT. TON
				FROM	TO	TOTAL	ppb			
52.00	54.70	Andesite Flow - fine grained grey-green andesite; slight foliation at 42° to CIA with occasional brecciated and cherty sections throughout with < 2% quartz- carbonate fracture fillings.								
54.70	57.40	Graphitic Sediments - fine-grained sequence of graphitic argillites and brecciated cherty sediments; gradationally banded grey to grey-black at 71° to CIA; < 1% thin fracture fillings of quartz-carb., < 2% fracture-filling stringers of pyrobitite evident.	1722A		56.00	57.00	10	14		
57.40	60.58	Brecciated Cherty Sediments - strongly brecciated and/or folded sequence of light-grey chert and thin horizons of graphitic argillites; irregular banding at 40° to 70° to CIA; < 2% quartz-carbonate stringers; < 1% pyrite/ pyrobitite.								

ONTARIO GEOLOGICAL SURVEY
 ASSESSMENT FILES
 OFFICE

 MAR - 9 1989

 RECORDED

GRIGES - TORONTO - 366-1168

DIAMOND DRILL RECORD

NAME OF PROPERTY Regent Rock Resources Inc - Cairo Twp.
 HOLE NO. RR-88-2 SHEET NO. 4

ASSESSMENT FILES OFFICE
 MAR - 8 1989
 RECEIVED

FOOTAGE		DESCRIPTION	ASSESSMENT FILES OFFICE	SAMPLE			ASSAYS				
FROM	TO			NO.	% SULPH IDES	FOOTAGE		Au	%	02. TON	07. TON
					FROM	TO	TOTAL	ppb			
60.58	60.70	Graphitic Horizon -sharp contacts to CIA; 1% stringers of pyrobitic associated with < 1cm quartz-carbonate stringer at 25° to CIA.	MAR - 8 1989	17225	60.00	61.50	1.5	20			
60.70	61.05	Brecciated Cherty Sediments -as previous; 20% graphitic component in irregular patches.									
61.05	67.75	Graphitic Sediments -as previous; gradational sequence of dark grey argillites and siltstones and graphitic argillites; bedding at 20° to 35° to CIA with evidence of drag folding about axis at 90° to CIA; occasional brecciated section exhibiting sub-rounded clasts of chert in a black, graphitic matrix; < 3% thin quartz-carbonate stringers at 20° to CIA; up to 2% stringer pyrobitic usually associated with quartz-carbonate stringers.									

GRIDDGES - T.C. TO - 368-1168

DIAMOND DRILL RECORD

NAME OF PROPERTY Regent Park Resources Inc. - Cairn Top
 HOLE NO. RR 88-2 SHEET NO. 5

FOOTAGE		DESCRIPTION	SAMPLE			ASSAYS			
FROM	TO		NO.	% SULPHIDES	FOOTAGE FROM TO TOTAL	Au ppt	%	OZ. TON	GT. TON
		<div style="border: 1px solid black; padding: 2px; width: fit-content;"> SURVEY ADJUSTMENT FILES OFFICE FEB - 1980 RECEIVED </div> 63.00 to 64.00 : breccia zone with sub-rounded chert clasts in fine-grained graphitic matrix							
		- @ 67.00 m. strongly schistose graphitic sediment at 20° to CIA; 5% fine stringers of pyrrhotite; 5% quartz-carbonate stringers.	17226		66.00 67.50 1.5	16			
			17227		67.50 68.00 0.5	18			
			17228		68.00 69.00 1.0	31			
67.75	68.60	Sheared and Carbonatized Andesite - medium grained, slightly schistose at 25° to CIA; strongly carbonatized throughout as matrix about 20% chloritic shards.							
68.60	69.70	Graphitic Sediments - as previous; slight brecciation with 15% chert component; Trace sulfide.							
69.70	80.05	Moderately Brecciated Andesite; with gradational interbeds of graphitic argillites - 3% thin quartz-carbonate stringers in brecciated to granular andesite/diorite with acc.							

DIAMOND DRILL RECORD

NAME OF PROPERTY Regent Rock Resources Inc. - Cairn Top
 HOLE NO. RR-88-2 SHEET NO. 6

FOOTAGE		DESCRIPTION	SAMPLE			ASSAYS				
FROM	TO		NO.	% SULPH. IDES	FOOTAGE FROM TO TOTAL	%	%	02. TON	02. TON	
		sedimentary section exhibiting disrupted structures; thin white-quartz-carbonate stringers at 70° to 80° to CIA.; trace Acte-pyrite along stringer schuages.								
8005	8200	Fine-Grained Greywacke - very fine-grained, light grey greywacke with occasional medium-grained clastic sections evident; gradational; poor bedding; 10% sections of brecciated chert and graphitic horizons; <2% quartz-carbonate evident.								
8200	8812	Brecciated Sequence of Greywacke, Chert and Graphitic Argillites. - sequence of: 65% medium to fine-grained greywacke exhibiting strand texture; grey green, massive clastic texture; 20% brecciated grey chert bands at 50° to CIA; and 10% black schistose graphitic horizons with 1% pyrochotite stringers; 4% quartz-carbonate stringers exhibited within graphitic sections.								

J.L.TINDALE & ASSOCIATES INC.

Consulting Geologists

DIAMOND DRILL RECORD

NAME OF PROPERTY Regent Rock Resources Inc. - Cairo Twp.
 HOLE NO. R.R. 88-2 SHEET NO. 7

FOOTAGE		DESCRIPTION	SAMPLE				ASSAYS				
FROM	TO		NO.	% SULPHIDES	FOOTAGE			A. ppb	%	OZ. TON	OZ. TON
					FROM	TO	TOTAL				
88.12	88.83	Graphitic Argillites	7229		87.50	88.00	0.5	21			
		- 85% graphitic schists at 52° to	7230		88.00	88.90	0.9	28			
		C/A with up to 3% stringer pyrochlotite noted; 5%	7231		88.90	89.40	0.5	22			
		to 8% chert lenses noted within graphitic schists;									
		< 1% quartz-carbonate noted.									
88.83	91.60	Sheared Andesite Flow									
		- grey-green, medium-grained with									
		slight schistosity at 50° to C/A; could be									
		dioritic intrusive; moderately carbonatized throughout.									
91.60	95.70	Fine-Grained Greywacke									
		- grey-black, fresh in appearance, fine									
		to medium-grained clastic sediment; non-magnetic;									
		equi-granular texture; < 3% thin quartz and									
		quartz-carbonate stringers at 53° to C/A.	7232		92.00	92.75	0.75	12			
		92.65 to 93.00: smoky quartz vein	7233		92.75	93.00	0.25	8			
		with 3% fracture-filling pyrite	7234		93.00	93.50	0.50	7			
		within quartz; irregular contacts at									
		15° to C/A.									

NGRIDGES - TORONTO - 366-1168

DIAMOND DRILL RECORD

NAME OF PROPERTY Regent Park Resources Inc. - Cairo Trng.
 HOLE NO. R.R. 88-2 SHEET NO. 8

FOOTAGE		DESCRIPTION	SAMPLE			ASSAYS				
FROM	TO		NO.	% SULPH. IDES	FOOTAGE		%	%	02. TON	02 TON
				FROM	TO	TOTAL				
95.70	97.10	Bleached Sedimentary Sequence - light grey greywacke sequence; <5% graphitic component in thin partings parallel to bedding at 53° to CIA; fine-grained and appears feldspathic-clastic.								
97.10	151.49	Fine-Grained Greywacke Sequence - grey-black, fine-grained with <3% quartz-carbonate stringers; 3 to 5% sections of bleached green, irregular fractures noted; dense, fine-grained equigranular, clastic texture; gradational with bands of siltstone and graphitic oncolites at 60° to CIA - to 0° to CIA indicating variable dips due to folding within sequence; non-magnetic; no mineralization noted.								
151.49		End of Hole.								

DIAMOND DRILL RECORD

J. L. TINDALE & ASSOCIATES INC.

Suite 907 - 110 Erskine Avenue
Toronto, Ontario, Canada M4P 1Y4

NAME OF PROPERTY Regent Rock Resources Inc. - Cairo Twp.
 HOLE NO. R.R. 88-3 LENGTH 130.15 metres
 LOCATION Regent Rock Grid; Claim No. 892136 - Cairo Twp.
 LATITUDE 7+95 mW DEPARTURE 1+82 mS
 ELEVATION _____ AZIMUTH 210° DIP -50°
 STARTED November 28 FINISHED November 30, 1988

FOOTAGE	DIP	AZIMUTH	FOOTAGE	DIP	AZIMUTH
45m	48°				
91m	44°				
130m	44°				

HOLE NO. 88-3 SHEET NO. 1

REMARKS Casing Pulled From Hole

LOGGED BY K. W. Johnson

FOOTAGE		DESCRIPTION	SAMPLE			ASSAYS					
FROM	TO		NO.	% SULPHIDES	FOOTAGE			Au ppb	S	OZ/TON	OZ/TON
					FROM	TO	TOTAL				
0.00	3.66	Casing in Overburden; sand and gravel.									
3.66	4.88	Broken and Ground Core - Boulders. 3.66 to 3.82: coarse-grained diorite boulder.									
		3.82 to 4.50: boulder of silicified rock with 3% stringer pyrite evident along irregular chloritic fractures; buff-brown carbonate evident throughout medium-grained epigranular siliceous groundmass.	17235		3.80	4.50	0.80	17			
		4.50 to 4.88: ground core; black greywacke.									
4.88	61.00	Fine-Grained Greywacke and Argillitic Argillite - Siltstone Sequence. - very fine grained, massive and black sequence; fresh appearance; slight banding or gradational									

ONTARIO GEOLOGICAL SURVEY
ASSESSMENT FILES OFFICE
MAR - 9 1989
RECEIVED

LANGRIDGE TORONTO - 366-1111

DIAMOND DRILL RECORD

NAME OF PROPERTY Regent Rock Resources Inc - Cairo Twp.

HOLE NO. RR 88-3

SHEET NO. 2

FOOTAGE		DESCRIPTION	SAMPLE			ASSAYS				
FROM	TO		NO.	% SULPHIDES	FOOTAGE		%	%	GT. TON	GT. TON
				FROM	TO	TOTAL				
		bedding evident at 46° to C/A; thin partings or horizons of graphite evident at 5% throughout sequence; trace of pyrite/pyrrhotite in very thin and discontinuous stringers.; 55% quartz-carbonate fracture-fillings throughout.								
		- at 42.00 metres becomes well-banded siltstone sequence at 30° to C/A.								
		- 51.00 to 53.50: 50% banded graphitic argillites and siltstone; bedding at 45° to C/A; trace pyrite in thin, discontinuous stringers; 5% quartz-carbonate fracture fillings.	1724	51.00	53.50	1.5				
		53.50: fine-grained greywacke; black to dark grey; black.								
61.00	68.70	Medium-Grained Diabase								
		- bleached upper contact with greywacke sequence; black, medium-grained equigranular with 20% white feldspar evident in chlorite matrix; slightly magnetic.								

DIAMOND DRILL RECORD

NAME OF PROPERTY Regent Rock Resources Inc. - Cairo Top
HOLE NO. RR 88-3 SHEET NO. 3

FOOTAGE		DESCRIPTION	SAMPLE			ASSAYS				
FROM	TO		NO.	% SULPH. IDES	FOOTAGE		Au	%	OZ. TON	OZ. TON
				FROM	TO	TOTAL	ppb			
68.70	124.10	Greywacke; with interbeds of siltstone - fine to medium-grained equigranular clastic sediment; slight gradational bedding evident within greywacke; sharp bedding contacts with siltstones at 20° to CIA; < 1% thin quartz-carbonate stringers parallel to bedding planes; trace stringer pyrite.								
		106.80 to 116.50; buff brown-green bleaching or alteration dissipating from thin fractures at 20° to 23° to CIA; trace biotite marks fractures; secondary fractures with quartz-carbonate cut banded zone at random orientations; trace to 1% very fine pyrite along fractures; * overall alteration noted at < 10% throughout section.	17237	110.00	111.00	1.0	36			
			17238	111.00	112.00	1.0	125			
			17239	112.00	113.00	1.0	8			
			17240	115.00	116.50	1.5	14			
124.10	125.90	Annealed Fault Zone - basic, faulted greywacke; core related to soft-clay-like section; heavily carbonatized.								

DIAMOND DRILL RECORD

J. L. TINDALE & ASSOCIATES INC.

Suite 907 - 110 Erskine Avenue
Toronto, Ontario, Canada M4P 1Y4

NAME OF PROPERTY Regent Rock Resources Inc. - Cairn Twp.
 HOLE NO. R.R. 88-4 LENGTH 99.67 metres.
 LOCATION Regent Rock Grid; Claim No. 892133; Cairn Twp.
 LATITUDE L12+00W DEPARTURE 0.40 m N
 ELEVATION _____ AZIMUTH 210° DIP -50°
 STARTED December 1 FINISHED December 2, 1988.

FOOTAGE	DIP	AZIMUTH	FOOTAGE	DIP	AZIMUTH
46m	-48°				
97m	N.E.				

HOLE NO. 88-4 SHEET NO. L

REMARKS Casing Pulled From Hole.

LOGGED BY K.W. Johnson

FOOTAGE		DESCRIPTION	SAMPLE			ASSAYS						
FROM	TO		NO.	% SULPHIDES	FOOTAGE			A	%	OZ/TON	OZ/TON	
					FROM	TO	TOTAL					
0.00	14.33	Casing in Overburden and Broken Bedrock										
14.33	18.75	Medium-Grained Diabase - grey-green, equigranular interstitial massive; core badly broken and ground to 61.00 metres; non-magnetic; 0.05 metre seam of graphite at lower contact at 45° to CIA.										
18.75	27.25	Greywacke - fine to medium grained clastic sediment; poorly bedded and massive, with banding slight at 45° to CIA; <1% very thin quartz-carbonate stringers at 0° to 15° to CIA; trace hematite alteration evident.										
27.25	29.25	Brecciated Graphitic Sediments - massive to moderately brecciated graphitic sediments; black, very fine grained; 2% fracture filling pyrite evident.	17211		27.25	28.25	1.0	14				
			17212		28.25	29.25	1.0	72				

ONTARIO GEOLOGICAL SURVEY
 CLASSIFICATION FILES
 OFFICE
 MAR - 9 1988
 RECEIVED

LANGRISHES TORONTO - 366-1161

J.L.TINDALE & ASSOCIATES INC.

Consulting Geologists

DIAMOND DRILL RECORD

NAME OF PROPERTY Regent Rock Resources Inc. - Cairo Twp.

HOLE NO. R.R. 88-4

SHEET NO. 2

FOOTAGE		DESCRIPTION	SAMPLE			ASSAYS				
FROM	TO		NO.	% SULPHIDES	FOOTAGE		Au	%	02. TON	02 TON
				FROM	TO	TOTAL	ppb			
29.25	38.90	<p>Greywacke</p> <p>- as previous; grades from medium-grained clastic sediment to fine grained greywacke at 35.70 metres; grey-green in colour; sharp lower contact at 60° to CIA.</p>								
38.90	47.00	<p>Brecciated and Altered Graphitic Argillites</p> <p>- very fine grained, massive, black; cut by 5% quartz-carbonate stringers and fracture-fillings at 0° to 50° to CIA with majority of stringers exhibiting rust-red hematite alteration; occ. stringer vein up to 0.04 metre in width, up to 3% pyrite/pyrrhotite associated with quartz-carb. alteration; sharp lower contact at 30° to CIA.</p>	17243	38.90	40.00	1.1	12			
			17244	40.00	41.00	1.0	12			
			17245	41.00	42.00	1.0	32			
			17246	42.00	43.50	1.5	7			
			17247	43.50	44.50	1.0	12			
			17248	44.50	45.50	1.0	11			
			17249	45.50	47.00	1.5	15			
47.00	53.65	<p>Medium-Grained Diabase</p> <p>- massive, equigranular intrusive; slightly magnetic; black-green in colour; 10% white interstitial ilmenite content.</p>								

J.L.TINDALE & ASSOCIATES INC.

Consulting Geologists

DIAMOND DRILL RECORD

NAME OF PROPERTY Regent Rock Resources Inc. - Congo Twp.

HOLE NO. RR88-4

SHEET NO. 3

FOOTAGE		DESCRIPTION	SAMPLE				ASSAYS			
FROM	TO		NO.	% SULPHIDES	FOOTAGE					
				FROM	TO	TOTAL	ppb	%	02. TON	07 TON
53.65	99.67	Graphitic Argillites - very fine grained, massive graphitic schists; < 2% quartz-carbonate alteration; trace pyrite/ amphibole; rust-red hematite noted along low-angle quartz-carbonate fracture-fillings; graphite occurs as thin discontinuous seams and smears along schistosity planes; graphite occurs in amounts to 3% throughout sequence; bedding/ bedding poorly defined; schistosity at 30° to CIA.								
			17250	78.00	78.50	0.50	8			
		78.50 to 79.00: steered and slightly sticified schist; medium-grey in colour; schistosity at 30° to CIA; 2% stringer pyrite noted at schistosity plane.	17251	78.50	79.00	0.50	56			
			17252	79.00	99.50	0.50	28			
			17253	96.90	97.90	1.0	9			
		97.04 to 97.15: quartz-carbonate vein at 30° to CIA; sideritic alteration of quartz yields orange hue to quartz; trace pyrite noted.	17254	97.90	99.00	1.1	8			

DIAMOND DRILL RECORD

J. L. TINDALE & ASSOCIATES INC.

Suite 907-110 Erskine Avenue
Toronto, Ontario, Canada M4P 1Y4

NAME OF PROPERTY Regent Park Resources Inc. - Cairo Typ.
 HOLE NO. RR 88-5 LENGTH 29.67 metres.
 LOCATION Regent Park Grid; Claim No 892134 - Cairo Typ.
 LATITUDE N12+00W DEPARTURE 0+30ms
 ELEVATION _____ AZIMUTH 210° DIP -50°
 STARTED December 3 FINISHED December 4, 1988.

FOOTAGE	DIP	AZIMUTH	FOOTAGE	DIP	AZIMUTH
45m	46°				
95m	46°				

HOLE NO. 88-5 SHEET NO. 1

REMARKS Casing Pulled.

LOGGED BY K.W. Johnson

FOOTAGE		DESCRIPTION	SAMPLE				ASSAYS					
FROM	TO		NO.	% SULPHIDES	FOOTAGE FROM	TO	TOTAL	%	¢	OZ/TON	OZ/TON	
0.00	15.24	Casing in Overburden										
15.24	54.50	Argillitic Sediments - very fine grained black-grey sediment; faintly bedded or banded at 26° to CIA; < 3% thin seams or horizons of graphite noted throughout, often marking schistosity or bedding planes; < 2% white quartz-carbonate stringers to 3 cm. width parallel to schistosity at 26° to CIA; no mineralization noted. 15.24 to 15.55: Diabasic boulder. - at 48.00 metres graphitic beds occur at 5%. - grades into interbedded grey mudstone sequence at 54.50 metres.	ONTARIO GEOLOGICAL SURVEY ASSESSMENT FILES OFFICE MAR - 9 1989 RECEIVED									

LANGRISHES TORONTO - 366-1114

DIAMOND DRILL RECORD

NAME OF PROPERTY Regent Rock Resources - Carleton Place
 HOLE NO. R.R. 88-5 SHEET NO. 2

FOOTAGE		DESCRIPTION	SAMPLE			ASSAYS			
FROM	TO		NO.	% SULPH. IDES	FOOTAGE FROM TO TOTAL	As ppb	%	02. TON	02 TON
51.50	76.90	Interbedded Greywackes with Graphitic Argillites - grey, medium grained clastic greywacke in sections up to 0.40 metres width interbedded with thin, 0.025 metre bands of black graphitic argillites at 25° to C/A.; graphitic component at 10%.							
		76.30 to 76.60; graphitic schist at 25° to C/A; trace pyrite in thin discontinuous stringers.							
76.90	96.10	Brecciated Graphitic Argillites - sequence of sheared to brecciated graphitic argillites; varying amounts and degrees of alteration throughout sequence; quartz carbonate stringers occur up to 25% parallel to schistosity.	17255		76.90 77.50 0.60	18			
			17256		77.50 77.90 0.40	11			
			17257		77.90 78.65 0.75	20			
			17258		78.65 79.40 0.75	21			
			17259		79.40 80.60 1.20	14			
			17260		80.60 81.90 1.30	9			
		76.90 to 77.50; black, graphitic schist with 5% fracture-filling pyrite;	17261		81.90 83.00 1.10	14			
		schistosity at 30° to C/A; sheared texture.	17262		83.00 84.50 1.50	107			
			17263		84.50 86.00 1.50	70			

NGRIDGES - TORONTO - 366-1168

DIAMOND DRILL RECORD

NAME OF PROPERTY Regent Rock Resources Inc. - Cairn Top
HOLE NO. R.R. 88-5 SHEET NO. 3

FOOTAGE		DESCRIPTION	SAMPLE			ASSAYS					
FROM	TO		NO.	% SULPH. IDES	FOOTAGE			Au ppb	%	OZ. TON	GT TON
					FROM	TO	TOTAL				
		77.50 to 77.90: fine grained, green-grey greywacke with 10% thin fracture-filling quartz-carbonate stringers; 0.08 metre seam of graphite-schist with 5% early-hembitic alteration; 5% quartz-carb. nod.	17214		86.00	88.0	2.0	55			
		77.90 to 78.65: brecciated graphitic schist with 20% red, early hembitic alteration along late, irregular fractures, associated with 15% quartz-carbonate alteration; 60% graphite component.									
		78.65 to 79.40: sheared zone; moderately siliceous with graphitic selvages; 60% brown carbonate groundmass cut by 5% late fractures of white, calcitic carbonate at 20° to 45°.									

VGRIDGES - TO - 368-1168

DIAMOND DRILL RECORD

NAME OF PROPERTY Regent Rock Resources Inc. - Cairn Twp.
 HOLE NO. R.R. 88-5 SHEET NO. 4

FOOTAGE		DESCRIPTION	SAMPLE			ASSAYS					
FROM	TO		NO.	% SULPH IDES	FOOTAGE			%	%	GZ. TON	GZ. TON
					FROM	TO	TOTAL				
		72.40 to 80.60: black, fine-grained graphitic schist with 2% stringer fracture-filling pyrite, 5% quartz-carbonate; 70% broken core.									
		80.60 to 81.20: medium-grained polymictic fault zone; 40% medium felsic clasts, 60% chloritic/mafic component; random distribution; subangular clasts; could be greywacke host.									
		81.20 to 87.00: slightly silicified and sheared graphitic schist; 10% graphite component evident along schistosity planes at 57° to CIA; up to 5% medium-grained pyrite in disseminated stringers associated with silicified sections; 1% quartz vein at 80° to CIA up to 3 cm width; 8% quartz-carbonate stringers; 3% zone of									

DIAMOND DRILL RECORD

NAME OF PROPERTY Regent Rock Resources Inc - Cairns Twp
 HOLE NO. R.R. 88-5 SHEET NO. 5

FOOTAGE		DESCRIPTION	SAMPLE			ASSAYS					
FROM	TO		NO.	% SULPH IDES	FOOTAGE			%	%	OZ. TON	OZ. TON
					FROM	TO	TOTAL				
		brown-carbonaceous groundmass in width to 0.10 metre.									
		87.00 to 93.00: sheared graphitic sediments; 40% graphitic argillites surrounds banded structures or lenses of clay sediments at 45° to CIA; trace to 2% late, fracture- filling pyrite; grey-black banded texture; grades into dense, black graphitic argillites.									
		- c. 96.00: 5% FeCO ₃ alteration along sinuous fractures at 75° to CIA.									
96.10	99.67	Fine Grained Diabase - fine grained, homogeneous massive intrusive; equigranular texture; 5% white quartz-carbonate stringers at random orientations; non-magnetic; sharp upper contact									

INGRIDGES - TORONTO - 366-1168

DIAMOND DRILL RECORD

J. L. TINDALE & ASSOCIATES INC.

Suite 907 - 110 Erskine Avenue
Toronto, Ontario, Canada M4P 1Y4

NAME OF PROPERTY Regent Rock Resources Inc. - Cairn Twp.
 HOLE NO. RR 88-7 LENGTH 154.23 metres.
 LOCATION Regent Rock Grid; Claim No. 892134 - Cairn Twp.
 LATITUDE 42°00' W DEPARTURE 1115 m S
 ELEVATION _____ AZIMUTH 210° DIP -50°
 STARTED December 4 FINISHED December 6, 1988

FOOTAGE	DIP	AZIMUTH	FOOTAGE	DIP	AZIMUTH
45m	44.5°				
91m	43.5°				
149m	46.5°	?			

HOLE NO. 88-7 SHEET NO. 1

REMARKS Casing Pulled From Hole.

LOGGED BY K.W. Johnson

FOOTAGE		DESCRIPTION	SAMPLE			ASSAYS					
FROM	TO		NO.	% SULPHIDES	FOOTAGE		%	%	OZ/TON	OZ/TON	
					FROM	TO					TOTAL
0.00	5.80	Casing in Overburden and Bedrock.									
5.80	154.23	Interbedded Greywacke - Siltstone Sequence - well bedded sequence of fine-grained clastic greywacke, grey in color, in bands to 0.30 m widths; interbedded with thin, up to 2cm bands of very-fine siltstone to argillites; bedding at 40° to 45° to CIA; < 1% quartz-carbonate fracture-filling at random orientations; occasional brecciated section; 69% greywacke. 23.50: Folding of siltstone-greywacke sequence with bedding at 10° to CIA; at 24.50 metres bedding rotates back to 45° to CIA. 47.30 to 47.50: 5% graphite noted in black, fine argillitic schists; bedded at 40° to CIA. - at 50.00 metres - greywacke comprises only 20% of sequence; dominantly fine-bedded siltstones.									

ONTARIO GEOLOGICAL SURVEY
ASSESSMENT FILES
OFFICE
MAR - 9 1989
RECEIVED

DIAMOND DRILL RECORD

NAME OF PROPERTY Regent Rock Resources Inc. - Carleton Place
 HOLE NO. R.R. 88-7 SHEET NO. 2

FOOTAGE		DESCRIPTION	SAMPLE			ASSAYS					
FROM	TO		NO.	% SULPHIDES	FOOTAGE			%	%	OZ./TON	OZ./TON
					FROM	TO	TOTAL				
	154.23	- very little change in lithology down-hole. End of Hole.									

DIAMOND DRILL RECORD

J. L. TINDALE & ASSOCIATES INC.

Suite 907-110 Erskine Avenue
Toronto, Ontario, Canada M4P 1Y4

NAME OF PROPERTY Regent Rock Resources Inc. - Cairn Twp.
 HOLE NO. R.R. 88-8 LENGTH 154.23 metres.
 LOCATION Regent Rock Grid; Claim # 892134 - Cairn Twp.
 LATITUDE 12+00mW DEPARTURE 2+25mS.
 ELEVATION _____ AZIMUTH 210° DIP -50°
 STARTED December 6 FINISHED December 8, 1988

FOOTAGE	DIP	AZIMUTH	FOOTAGE	DIP	AZIMUTH
46m	46.5°				
91m	44.5°				
152m	44.0°				

HOLE NO. 88-8 SHEET NO. 1

REMARKS Casing Pulled From Hole.

LOGGED BY K.W. Johnson

FOOTAGE		DESCRIPTION	SAMPLE				ASSAYS				
FROM	TO		NO.	% SULPHIDES	FOOTAGE		%	¢	OZ/TON	OZ/TON	
					FROM	TO					TOTAL
0.00	4.57	Casing in Overburden and Bedrock									
4.57	79.05	Greywacke Sequence - dark grey, fine to medium-grained clastic sediment with thin interbeds of siltstone and argillites at 47° to CIA; greywacke comprises 60% of sequence in beds to 0.70 metres; <1% quartz-carbonate stringers at 0° to 15° to CIA. 9.00 to 11.40: broken ground; blocky - at 42.00 metres: greywacke becomes dominant lithology comprising thickly bedded sequence at 80%. 69.20 to 73.00: greywacke becomes slightly brecciated, evidence of soft-sediment deformation; 2% thin quartz-carbonate fracture-fillings.									

ONTARIO GEOLOGICAL SURVEY
ASSESSMENT FILES
OFFICE
MAR - 9 1989
RECEIVED

DIAMOND DRILL RECORD

NAME OF PROPERTY Regent Rock Resources Inc. - Cairn Top
 HOLE NO. RR. 88-8. SHEET NO. 2

FOOTAGE		DESCRIPTION	SAMPLE			ASSAYS				
FROM	TO		NO.	% SULPHIDES	FOOTAGE		ppb Au	%	OZ. TON	OZ. TON
					FROM	TO	TOTAL			
		69.20 to 69.70: broken core; bad grade; 2% quartz-carbonate fracture fillings at $< 5^\circ$ to C/A.								
79.05	85.05	Dioritic Intrusive - medium grained, equigranular intrusive, grey-green in color; cut by 5% stringer and interstitial quartz-carbonate., sharp upper and lower contacts at 80° to C/A.; slight schistosity at 35° to C/A.								
85.05	113.35	Massive Graphitic Argillites. - very fine grained, massive, black graphitic argillites; schistose with slight, sinuous banding at 24° to C/A; trace pyrite in stringers and disseminations; $< 2\%$ quartz-carbonate stringers, 5% graphite component, noticeable on schistosity planes. occasional interbed of fine grained grey-wacke evident.	17265		87.00	88.00	1.0	30.		

DIAMOND DRILL RECORD

NAME OF PROPERTY Regent Rock Resources Inc. - Cairn Twp.
 HOLE NO. R.R. 88-8. SHEET NO. 3

FOOTAGE		DESCRIPTION	SAMPLE			ASSAYS				
FROM	TO		NO.	% SULPHIDES	FOOTAGE		%	%	OZ./TON	OZ./TON
					FROM	TO				
113.35	154.23	<p>Greywacke Sequence - massively bedded, grey, medium-grained clastic sediment, with 15% interbeds of siltstone at 30° to CIA comprising widths of 0.05 metres.</p>								
	154.23	End. of Hole.								

DIAMOND DRILL RECORD

J. L. TINDALE & ASSOCIATES INC.

Suite 907 - 110 Erskine Avenue
Toronto, Ontario, Canada M4P 1Y4

NAME OF PROPERTY Regent Rock Resources Inc. - Cairn Twp.
 HOLE NO. RR 88-9 LENGTH 154.53 metres.
 LOCATION Regent Rock Grd; Claim No. 892133 - Cairn Twp.
 LATITUDE L9+00W DEPARTURE 1+50m N
 ELEVATION _____ AZIMUTH 210° DIP -50°
 STARTED December 9 FINISHED December 12, 1988.

FOOTAGE	DIP	AZIMUTH	FOOTAGE	DIP	AZIMUTH
46m.	45.5°				
95m	45.5°				
152m	49.0°				

HOLE NO. 88-9 SHEET NO. 1

REMARKS Casing Pulled.

LOGGED BY K. W. Johnson

FOOTAGE		DESCRIPTION	SAMPLE				ASSAYS					
FROM	TO		NO.	% SULPHIDES	FOOTAGE			%	%	OZ/TON	OZ/TON	
					FROM	TO	TOTAL					
0.00	3.05	Casing in Overburden; sand.										
3.05	4.88	Broken Core - 20% pink granite, 70% greenstone										
4.88	17.50	Andesite - green, fine-grained massive, with slight schistosity at 40° to CIA; 3% irregular and diffuse quartz-carbonate fracture-filling; no mineralization noted.										
17.50	21.25	Gabbroic Intrusive - upper contact at 45° to CIA with thin stringers of quartz-carbonate-biotite marking contacts; coarse to medium-grained mottled texture with 3% fracture-filling stringers of quartz-carbonate strongly chloritic; massive to slightly schistose; non-magnetic.										

ONTARIO GEOLOGICAL SURVEY
ASSESSMENT FILES
OFFICE
MAR - 9 1989
RECEIVED

LANGRIDGES TORONTO - 366-1111

DIAMOND DRILL RECORD

NAME OF PROPERTY Regent Rock Resources, Inc. - Coiro Twp.
 HOLE NO. RR. 88-9. SHEET NO. 2

FOOTAGE		DESCRIPTION	SAMPLE			ASSAYS				
FROM	TO		NO.	% SULPHIDES	FOOTAGE		%	%	OZ./TON	OZ./TON
					FROM	TO				
21.25	24.40	Andesite - fine grained, massive, as previous.								
24.40	30.70	Gabbro - massive, green/white mottled coarse-grained texture; as previous.								
30.70	154.53	Andesite Flows (Pillowed?). - fine grained, green and massive to slightly schistose at 50° to CIA; rhythmic banding, black with 1 to 2% carbonate alteration, every 0.5 metres approximately suggests pillow selvages; < 1% quartz-carbonate stringers or veins to 2 cm widths at 50° to 60° to CIA. 47.20 to 47.85: fracture zone with 10% quartz-carbonate veins at 0° to CIA; no sulfides noted. - andesite becomes quite massive at 50.00 metres.								

DIAMOND DRILL RECORD

NAME OF PROPERTY Regent Rock Resources Inc. - Cairn Top.

HOLE NO. R.R. 88-9 SHEET NO. 3

FOOTAGE		DESCRIPTION	SAMPLE			ASSAYS					
FROM	TO		NO.	% SULPH. IDES	FOOTAGE		Au ppb	%	OZ./TON	OZ. TON	
				FROM	TO	TOTAL					
		66.15 to 66.35: quartz-carbonate-filled shear zone at 40° to CIA; trace pyrite noted along chloritic fractures.	17266		66.15	66.35	0.20	7			
			17267		66.35	67.00	0.65	7			
		89.70 to 89.85: quartz-carbonate vein at 20° to CIA; mildly chloritic vein selvages.									
		92.20 to 93.00: coarse-grained, mottled texture with 35% coarse, irregular growths of carbonate in green, chloritic, fine-grained matrix.									
		102.35 to 102.50: quartz-carbonate vein at 25° to CIA; 1% medium-grained pyrite along vein selvages and along thin fracture-fillings at 35° to vein contacts.	17268		102.00	102.35	0.35	6			
			17269		102.35	103.00	0.65	7			
			17270		103.00	103.85	0.85	5			
			17271		103.85	104.20	0.35	<5			
			17272		104.20	104.75	0.55	8			
		102.50 to 103.85: 5% thin, sharp and distinct quartz-carbonate fracture-fillings at 50° to 25° to CIA.	17273		104.75	105.50	0.75	9			
			17274		105.50	106.00	0.50	5			

DIAMOND DRILL RECORD

NAME OF PROPERTY Regent Rock Resources Inc. - Cosco Typ
 HOLE NO. R.R. 88-9 SHEET NO. 4

FOOTAGE		DESCRIPTION	SAMPLE			ASSAYS				
FROM	TO		NO.	% SULPHIDES	FOOTAGE		%	%	OZ. TON	OZ. TON
					FROM	TO				
		<p>103.85 to 104.07 : quartz-carbonate vein at 60° to CIA; strongly carbonatized vein selvages exhibit mottled, porphyritic texture up to 0.08 metres from vein selvages; 10% fine pyrite in growths/masses.</p> <p>104.07 to 104.80: 8% thin, discontinuous and gash-like quartz-carbonate fracture-fillings.</p> <p>104.80 to 105.40: quartz-carbonate-filled sheared zone at 25° to CIA; 8% fine disseminated pyrite associated with chloritic growths in quartz-carbonate granules; slight epidote alteration evident along fractures and in irregular coarse masses.</p> <p>- at 105.50 grades back into massive orthite; fine grained, green.</p> <p>113.10 to 113.50: 15% quartz carbonate fracture-fillings at 25° to CIA.</p>								

DIAMOND DRILL RECORD

NAME OF PROPERTY Regent Rock Resources Inc. - Cairn Type
 HOLE NO. R.R.88-9 SHEET NO. 5

FOOTAGE		DESCRIPTION	SAMPLE			ASSAYS				
FROM	TO		NO.	% SULPHIDES	FOOTAGE		%	%	OZ TON	OZ TON
					FROM	TO				
	154.53	<p>- andesite becomes massive again with 1% thin, indistinct quartz-carbonate stringers and alteration.</p> <p>End of Hole.</p>								

DIAMOND DRILL RECORD

J. L. TINDALE & ASSOCIATES INC.

Suite 907-110 Erskine Avenue
Toronto, Ontario, Canada M4P 1Y4

NAME OF PROPERTY Regent Rock Resources Inc. - Cairn Twp.
 HOLE NO. RR 88-9 LENGTH 154.53 metres
 LOCATION Regent Rock Grid; Claim No. 892133 - Cairn Twp.
 LATITUDE L9500W DEPARTURE 1+50m N
 ELEVATION _____ AZIMUTH 210° DIP -50°
 STARTED December 9 FINISHED December 12, 1988

FOOTAGE	DIP	AZIMUTH	FOOTAGE	DIP	AZIMUTH
46m	45.5°				
95m	45.5°				
152m	49.0°				

HOLE NO. 88-9 SHEET NO. 1

REMARKS Casing Piled.

LOGGED BY K. W. Johnson

FOOTAGE		DESCRIPTION	SAMPLE			ASSAYS				
FROM	TO		NO.	% SULPHIDES	FOOTAGE		%	%	OZ/TON	OZ/TON
			FROM	TO	TOTAL					
0.00	3.05	Casing in Overburden; sand.								
3.05	4.88	Broken Core - 30% pink granite, 70% greenstone								
4.88	17.50	Andesite - green, fine-grained massive, with slight schistosity at 40° to CIA; 3% magnetite and diffuse quartz-carbonate fracture-filling; no mineralization noted.								
17.50	21.25	Gabbroic Intrusive - upper contact at 45° to CIA with thin stringers of quartz-carbonate biotite, making contacts; coarse to medium-grained mottled texture with 3% fracture-filling stringers of quartz-carbonate strongly chloritic; massive to slightly schistose; non-magnetic.								

ONTARIO GEOLOGICAL SURVEY
ASSESSMENT FILES
OFFICE
MAR - 9 1989
RECEIVED

LANGRISH TORONTO - 366-1188

DIAMOND DRILL RECORD

NAME OF PROPERTY Regent Rock Resources Inc. - Cairn Top
 HOLE NO. RR. 88-9. SHEET NO. 2

FOOTAGE		DESCRIPTION	SAMPLE			ASSAYS				
FROM	TO		NO.	% SULPHIDES	FOOTAGE		%	%	OZ. TON	OZ. TON
					FROM	TO				
21.25	24.40	Andesite - fine grained, massive, as previous.								
24.40	30.70	Gabbro - massive, green/white mottled coarse-grained texture, as previous.								
30.70	154.53	Andesite Flaws (Pillowed?). - fine grained, green and massive to slightly schistose at 50° to CIA; rhythmic banding, black with 1 to 2% carbonate alteration, every 0.5 metres approximately suggests pillow selvages; < 1% quartz-carbonate stringers or veins to 2 cm widths at 50° to 60° to CIA. 47.20 to 47.85: fracture zone with 10% quartz-carbonate veins at 0° to CIA; no sulfides noted. - andesite becomes quite massive at 50.00 metres.								

DIAMOND DRILL RECORD

NAME OF PROPERTY Regent Rock Resources Inc. - Coiro Top.
 HOLE NO. R.R. 88-9 SHEET NO. 3

FOOTAGE		DESCRIPTION	SAMPLE			ASSAYS					
FROM	TO		NO.	% SULPHIDES	FOOTAGE		Au	%	OZ. TON	OZ. TON	
				FROM	TO	TOTAL	ppb				
		66.15 to 66.35: quartz-carbonate-filled shear zone at 40° to CIA; trace pyrite noted along chloritic fractures.	17266		66.15	66.35	0.20	7			
			17267		66.35	67.00	0.65	7			
		89.70 to 89.85: quartz-carbonate vein at 20° to CIA; mildly chloritic vein selvages.									
		92.20 to 93.00: coarse-grained, mottled texture with 35% coarse, irregular growths of carbonate in green, chloritic, fine-grained matrix.									
		102.35 to 102.50: quartz-carbonate vein at 25° to CIA; 1% medium-grained pyrite along vein selvages and along thin fracture-fillings at 35° to vein contacts.	17268		102.00	102.35	0.35	6			
			17269		102.35	103.00	0.65	7			
			17270		103.00	103.85	0.85	5			
			17271		103.85	104.20	0.35	<5			
			17272		104.20	104.75	0.55	8			
		102.50 to 103.85: 5% thin, sharp and distinct quartz-carbonate fracture-fillings at 50° to 25° to CIA.	17273		104.75	105.50	0.75	9			
			17274		105.50	106.00	0.50	5			

LANGRIDGES - TORONTO - 368-1168

DIAMOND DRILL RECORD

NAME OF PROPERTY Regent Rock Resources Inc. - Coiro Top
 HOLE NO. R.R. 88-9 SHEET NO. 4

FOOTAGE		DESCRIPTION	SAMPLE			ASSAYS					
FROM	TO		NO.	% SULPH. IDES	FOOTAGE		%	%	OZ. TON	OZ. TON	
					FROM	TO	TOTAL				
		103.85 to 104.07 : quartz-carbonate vein at 60° to CIA, strongly carbonated vein slugs exhibit mottled, porphyritic texture up to 0.08 metres from vein slugs; 10% fine pyrite in growths/masses.									
		104.07 to 104.80: 8% thin, discontinuous and gash-like quartz-carbonate fracture-fillings.									
		104.80 to 105.40: quartz-carbonate-filled sheared zone at 25° to CIA; 8% fine disseminated pyrite associated with chloritic growths in quartz-carbonate granules; slight epidote alteration evident along fractures and in irregular coarse masses.									
		- at 105.50 grades back into massive andesite; fine grained, green.									
		113.10 to 113.50: 15% quartz-carbonate fracture-fillings at 25° to CIA.									

ONTARIO GEOLOGICAL SURVEY
 ASSESSMENT FILES
 OFFICE
 MAR - 9 1980
 RECEIVED

DIAMOND DRILL RECORD

NAME OF PROPERTY Regent Rock Resources Inc. - Cairn Type.
 HOLE NO. R.R.88-9 SHEET NO. 5

FOOTAGE		DESCRIPTION	SAMPLE			ASSAYS				
FROM	TO		NO.	% SULPHIDES	FOOTAGE		%	%	OZ TON	OZ TON
					FROM	TO				
		- andesite becomes massive again with 1% thin, indistinct quartz-carbonate stringers and alteration.								
	154.53	End of Hole.								

ONTARIO GEOLOGICAL SURVEY
 ASSESSMENT FILES
 OFFICE
 MAR - 9 1983
 RECEIVED

DIAMOND DRILL RECORD

J. L. TINDALE & ASSOCIATES INC.

Suite 907-110 Erskine Avenue
Toronto, Ontario, Canada M4P 1Y4

NAME OF PROPERTY Regent Rock Resources Inc - Cairo Twp
 HOLE NO. RR 88-10 LENGTH 154.53 metres
 LOCATION Regent Rock Grd, Claim No 892133 - Cairo Twp
 LATITUDE L 9°00' W DEPARTURE 1+00m N
 ELEVATION _____ AZIMUTH 210° DIP -50°
 STARTED December 12 FINISHED December 14, 1988

FOOTAGE	DIP	AZIMUTH	FOOTAGE	DIP	AZIMUTH
46m	48°				
91m	45.5°				
155m	44.5°				

HOLE NO. 88-10 SHEET NO. 1

REMARKS Casing Pulled from Hole.

LOGGED BY K.W. Johnson

FOOTAGE		DESCRIPTION	SAMPLE			ASSAYS				
FROM	TO		NO.	% SULPHIDES	FOOTAGE		Au ppb	%	OZ/TON	OZ/TON
					FROM	TO				
0.00	4.88	Casing in Overburden and Bedrock								
4.88	128.62	Andesite Flow (Pillowed) - fine grained, green, massive to slightly foliated at 40° to CIA; < 1% quartz-carbonate alteration and/or stringers; trace pyrite in irregular disseminated granules.								
		14.60 to 14.74: quartz-carbonate vein at 40° to CIA; exhibits angular fragments in fine groundmass of quartz-carbonate; 3% disseminated pyrite in single horizon 1cm wide at lower contact.	17275		14.50	15.00	0.50	6		
		- at 17.00 metres; andesite appears mottled with 3% irregular and ill-defined carbonate pods in groundmass of fine chlorite. - becomes massive again at 21.00 m.								

MINERALOGICAL SURVEY
ASSESSMENT FILES
OFFICE
1988-9 1989
RECEIVED

LANGRIDGES TORONTO - 366-1104

DIAMOND DRILL RECORD

NAME OF PROPERTY _____

HOLE NO. R.R 88-10

SHEET NO. 2

FOOTAGE		DESCRIPTION	SAMPLE			ASSAYS					
FROM	TO		NO.	% SULPHIDES	FOOTAGE			%	%	OZ TON	OZ TON
					FROM	TO	TOTAL				
		<p>- occasional section to 0.75 metres of gradationally carbonatized andesite; moderately mottled texture.</p> <p>- at 56.00 metres; andesite is quite massive, very fine grained, and cut by 2% very thin and random carbonatized fractures.</p> <p>71.43 to 71.50 } quartz-carbonate veins 75.12 to 75.16 } at 35° to 60° to 78.24 to 78.33 } C/A; no mineralization noted.</p> <p>81.38 to 81.44: quartz-carbonate vein at 40° to C/A.</p> <p>- pillow selvages readily evident from 86.00 metres; marked by mafic, carbonatized bands; carbonatized vesicles mark top of pillows (down-hole?).</p> <p>121.80 to 122.40: carbonate-filled fractures with chloritic selvages at 10° to C/A; 10% of section.</p>									

DIAMOND DRILL RECORD

NAME OF PROPERTY _____

HOLE NO. R.R. 88-10. SHEET NO. 3

FOOTAGE		DESCRIPTION	SAMPLE			ASSAYS				
FROM	TO		NO.	% SULPHIDES	FOOTAGE		%	%	OZ. TON	OZ. TON
					FROM	TO				
128.62	142.00	<p>Coarse-Grained Andesite Flow</p> <p>- green, massive, coarse-grained andesite flow with porphyritic texture; up to 20% coarse, sub-rounded chloritic porphyroblasts in a fine-grained chloritic matrix; 1 to 2% thin carbonate stringers evident at random orientations; gradational upper and lower contacts with pillared andesites.</p> <p>- grades into massive, fine-grained andesite at 142.00 metres.</p>								
142.00	154.53	<p>Andesite Flow</p> <p>- massive, green to dark green; no schistosity; up to 4% quartz-carbonate along thin random fractures and occasional veins up to 3 cm. width at 40° to 10° to C/A.</p>								
	154.53	End of Hde.								

DIAMOND DRILL RECORD

J. L. TINDALE & ASSOCIATES INC.

Suite 907-110 Erskine Avenue
Toronto, Ontario, Canada M4P 1Y4

NAME OF PROPERTY Regent Rock Resources Inc - Cairn Top
 HOLE NO. RR 88-10 LENGTH 154.53 metres
 LOCATION Regent Rock Grid, Claim No 892133 - Cairn Top
 LATITUDE L9:00 W DEPARTURE 1+00m N
 ELEVATION _____ AZIMUTH 210° DIP -50°
 STARTED December 12 FINISHED December 14, 1988

FOOTAGE	DIP	AZIMUTH	FOOTAGE	DIP	AZIMUTH
46m	48°				
91m	45.5°				
155m	44.5°				

HOLE NO. 88-10 SHEET NO. 1
 REMARKS Casing Pulled from Hole.

LOGGED BY K.W. Johnson

FOOTAGE		DESCRIPTION	SAMPLE				ASSAYS				
FROM	TO		NO.	% SULPHIDES	FOOTAGE			Au ppb	%	OZ/TON	OZ/TON
					FROM	TO	TOTAL				
0.00	4.88	Casing in Overburden and Bedrock									
4.88	128.62	Andesite Flow (Pillowed) - fine grained, green, massive to slightly foliated at 40° to CA; < 1% quartz-carbonate alteration and/or stringers; trace pyrite in irregular disseminated granules.									
		14.60 to 14.74: quartz-carbonate vein at 40° to CA; exhibits angular fragments in fine groundmass of quartz-carbonate; 3% disseminated pyrite in single horizon 1cm wide at lower contact.	17275		14.50	15.00	0.50	6			
		- at 17.00 metres; andesite appears mottled with 3% irregular and ill-defined carbonate pods in groundmass of fine chlorite.									
		- becomes massive again at 21.00 m.									

ONTARIO GEOLOGICAL SURVEY
 ASSESSMENT FILES
 OFFICE
 MAR - 9 1989
 RECEIVED

LANGRIDGES TORONTO - 366-1101

DIAMOND DRILL RECORD

NAME OF PROPERTY _____

HOLE NO. R.R. 88-10 SHEET NO. 2

FOOTAGE		DESCRIPTION	SAMPLE			ASSAYS				
FROM	TO		NO.	% SULPH. IDES	FOOTAGE		%	%	OZ/TON	OZ TON
					FROM	TO				
		<p>- occasional section to 0.75 metres of gradationally carbonatized andesite; moderately mottled texture.</p> <p>- at 56.00 metres; andesite is quite massive, very fine grained, and cut by 2% very thin and random carbonatized fractures.</p> <p>71.43 to 71.50 } quartz-carbonate veins 75.12 to 75.16 } at 35° to 60° to 78.24 to 78.33 } C/A; no mineralization noted.</p> <p>81.38 to 81.44: quartz-carbonate vein at 40° to C/A.</p> <p>- pillow selvages readily evident from 86.00 metres; marked by mafic, carbonatized bands; carbonatized vesicles mark top of pillows (downside?).</p> <p>121.80 to 122.40: carbonate-filled fractures with chloritic selvages at 10° to C/A; 10% of section.</p>								

DIAMOND DRILL RECORD

NAME OF PROPERTY _____

HOLE NO. R.R. 88-10. SHEET NO. 3

FOOTAGE		DESCRIPTION	SAMPLE			ASSAYS				
FROM	TO		NO.	% SULPHIDES	FOOTAGE		%	%	OZ./TON	OZ./TON
					FROM	TO				
128.62	142.00	<p>Coarse-Grained Andesite Flow</p> <p>- green, massive, coarse-grained andesite flow with porphyritic texture; up to 20% coarse, sub-rounded chloritic porphyroblasts in a fine-grained chloritic matrix; 1 to 2% thin carbonate stringers evident at random orientations; gradational upper and lower contacts with pillared andesites.</p> <p>- grades into massive, fine-grained andesite at 142.00 metres.</p>								
142.00	154.53	<p>Andesite Flow</p> <p>- massive, green to dark green; no schistosity; up to 4% quartz-carbonate along thin random fractures and occasional veins up to 3 cm. width at 40° to 10° to C/A.</p>								
	154.53	End of Hde.								

DIAMOND DRILL RECORD

J. L. TINDALE & ASSOCIATES INC.

Suite 907 - 110 Erskine Avenue
Toronto, Ontario, Canada M4P 1Y4

NAME OF PROPERTY Regent Rock Resources Inc. - Cairn Typ.
 HOLE NO. RR-88-11 LENGTH 99.67 metres.
 LOCATION Regent Rock Grid - Claim No. 892136; Cairn Typ.
 LATITUDE L8.96W DEPARTURE 4.40 m S
 ELEVATION _____ AZIMUTH 030° DIP -50°
 STARTED December 14 FINISHED December 15, 1988

FOOTAGE	DIP	AZIMUTH	FOOTAGE	DIP	AZIMUTH
45m	47°				
99m	45°				

HOLE NO. 88-11 SHEET NO. 1
 REMARKS Casing Pulled From Hole.

LOGGED BY K.W. Johnson

FOOTAGE		DESCRIPTION	SAMPLE				ASSAYS					
FROM	TO		NO.	% SULPHIDES	FOOTAGE			%	%	OZ/TON	OZ/TON	
					FROM	TO	TOTAL					
0.00	2.13	Casing in Overburden and Boxed										
					No	Samples						
2.13	99.67	Greywacke - badly broken and ground <u>8.5 to 10.5 metres</u> 95% fine grained greywacke 5% graphite component. - dark grey fine-grained greywacke with banding/bellings at 28° to C/A, banding marked by argillitic bands to 0.15 metre widths; <5% graphite in thin horizons to 2cm widths. - greywacke remains consistent down hole to 99.67 metres; argillitic bands up to 0.25 metre widths are evident usually exhibiting graphitic component up to 5%; no sulphides noted through entire hole length.										
99.67		End of Hole.										

ONTARIO GEOLOGICAL SURVEY
 ASSESSMENT FILES
 OFFICE
 MAR - 9 1988

LANGRIDGE TORONTO - 366-1148

DIAMOND DRILL RECORD

J. L. TINDALE & ASSOCIATES INC.

Suite 907 - 110 Erskine Avenue
Toronto, Ontario, Canada M4P 1Y4

NAME OF PROPERTY Regent Rock Resources Inc. - Cairn Typ.
 HOLE NO. R.R. 88-11 LENGTH 99.67 metres.
 LOCATION Regent Rock Grid - Claim No. 892136; Cairn Typ.
 LATITUDE L8.96W DEPARTURE 4.40m S
 ELEVATION _____ AZIMUTH 030° DIP -50°
 STARTED December 14 FINISHED December 15, 1988

FOOTAGE	DIP	AZIMUTH	FOOTAGE	DIP	AZIMUTH
45m	47°				
99m	45°				

HOLE NO. 88-11 SHEET NO. 1
 REMARKS Casing Pulled From Hole.

LOGGED BY K.W. Johnson

FOOTAGE		DESCRIPTION	SAMPLE				ASSAYS						
FROM	TO		NO.	% SULPHIDES	FOOTAGE			%	%	OZ/TON	OZ/TON		
		FROM			TO	TOTAL							
0.00	2.13	Casing in Overburden and Bedrock.											
					No	Samples							
2.13	99.67	Greywacke - badly broken and ground core to 10.00 metres; 90% fine-grained greywacke 5% graphite component. - dark grey fine-grained greywacke with banding/bellings at 28° to C/A, banding marked by argillitic bands to 0.15 metre widths; 2-5% graphite in thin horizons to 2cm widths. - greywacke remains consistent down- hole to 99.67 metres; argillitic bands up to 0.25 metre widths are evident usually exhibiting graphitic component up to 5%; no sulfides noted through entire hole length.											
99.67		End of Hole.											

ONTARIO GEOLOGICAL SURVEY
 ASSESSMENT FILES
 OFFICE
 MAR - 9 1989
 RECEIVED

LANGRIDGE TORONTO - 366-1141



Name and Postal Address of Recorded Holder

Regent Rock Resources Inc.

Ste. 500, 67 Richmond St. W., TORONTO, Ontario, M5H 1Z5.

Summary of Work Performance and Distribution of Credits

Total Work Days Cr. claimed <i>1072</i>	Mining Claim			Mining Claim			Mining Claim		
	Prefix	Number	Work Days Cr.	Prefix	Number	Work Days Cr.	Prefix	Number	Work Days Cr.
for Performance of the following work. (Check one only)	L	892133	178						
	<input type="checkbox"/> Manual Work	892134	180						
	<input type="checkbox"/> Shaft Sinking Drifting or other Lateral Work.	829135	178						
	<input type="checkbox"/> Compressed Air, other Power driven or mechanical equip.	829136	178						
	<input type="checkbox"/> Power Stripping	892137	180						
	<input checked="" type="checkbox"/> Diamond or other Core drilling	892138	178						
<input type="checkbox"/> Land Survey									

All the work was performed on Mining Claim(s): 892133, 892134, (892135), 892136

ONTARIO GEOLOGICAL SURVEY ASSESSMENT FILES OFFICE

Required Information eg: type of equipment, Names, Addresses, etc. (See Table Below)

Contractor : Heath & Sherwood Drilling (1986) Inc.
34 Duncan Ave. North,
KIRKLAND LAKE, Ontario
P2N 3L3
Nov 24/88 - Dec 15/88

Project Geologist: Ken Johnson
J. L. Tindale & Assoc. Inc.,
Ste. 907, 110 Erskine Ave.,
TORONTO, Ontario
M4P 1Y4

Drilled 4258
Applied -1072
3186

RECORDED FEB 9 1989

RECEIVED FEB 9 1989 1:55pm

MAR - 9 1989
drill: BBS-15A wirchire
R E C O R D E D B O X

Receipt # _____ Date of Report 01/01/89 Recorded Holder or Agent (Signature) _____

Certification Verifying Report of Work

I hereby certify that I have a personal and intimate knowledge of the facts set forth in the Report of Work annexed hereto, having performed the work or witnessed same during and/or after its completion and the annexed report is true.

Name and Postal Address of Person Certifying
J. B. Boniwell, Excalibur International Consultants Ltd., 10 Hurontario St.,
MISSISSAUGA, Ontario, L5G 3G7

Date Certified 02/02/89 Certified by (Signature) _____

Table of Information/Attachments Required by the Mining Recorder

Type of Work	Specific information per type	Other information (Common to 2 or more types)	Attachments
Manual Work	Nil	Names and addresses of men who performed manual work/operated equipment, together with dates and hours of employment.	Work Sketch: these are required to show the location and extent of work in relation to the nearest claim post.
Shaft Sinking, Drifting or other Lateral Work			
Compressed air, other power driven or mechanical equip.	Type of equipment	Names and addresses of owner or operator together with dates when drilling/stripping done.	Work Sketch (as above) in duplicate
Power Stripping	Type of equipment and amount expended. Note: Proof of actual cost must be submitted within 30 days of recording.		
Diamond or other core drilling	Signed core log showing; footage, diameter of core, number and angles of holes.		

250s

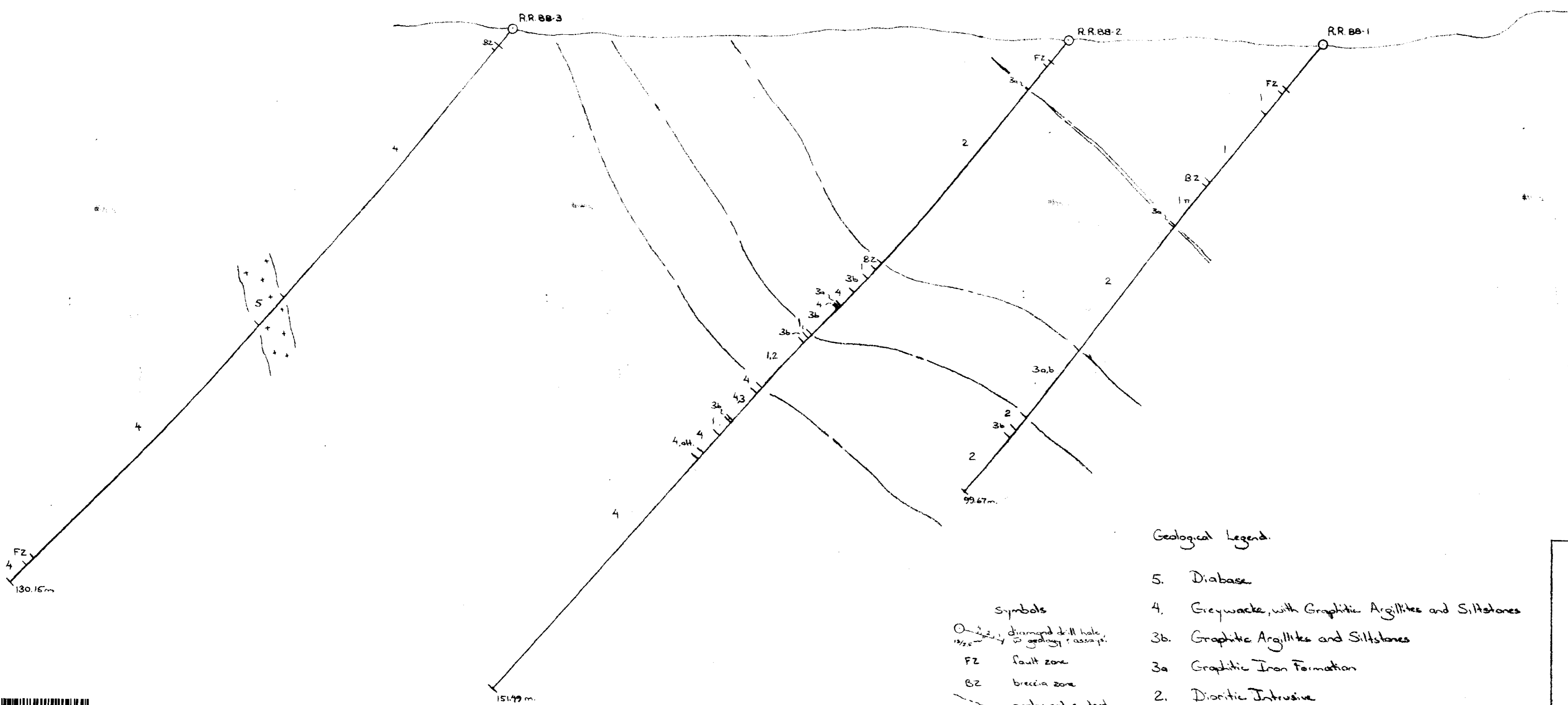
200s

150s

100s

50s

0



Geological Legend:

- 5. Diabase
- 4. Greywacke, with Graphitic Argillites and Siltstones
- 3b. Graphitic Argillites and Siltstones
- 3a. Graphitic Iron Formation
- 2. Dioritic Intrusive
- 1. Andesite Flow

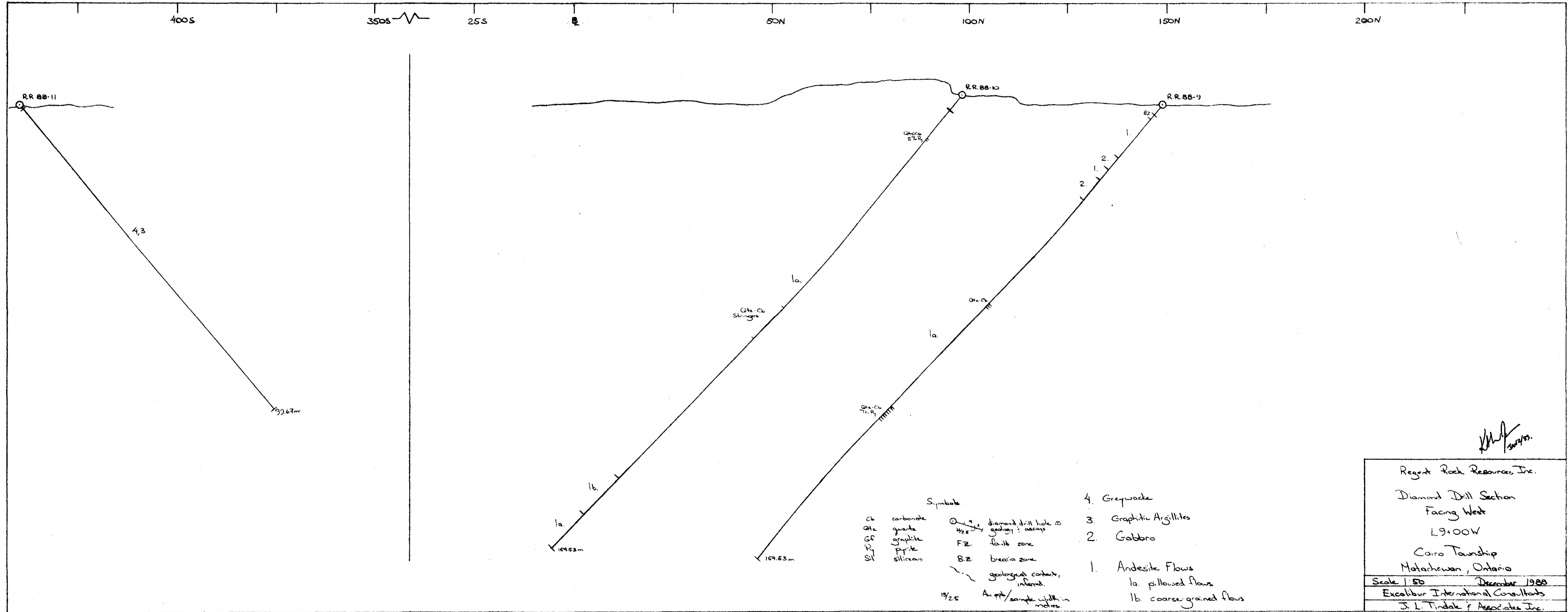
- Symbols
- diamond drill hole, 1972
 - FZ fault zone
 - BZ breccia zone
 - - - geological contact inferred.

[Handwritten signature]
11/2/88

Regent Rock Resources Inc.
 Diamond Drill Section
 Facing West
 LB+00W
 Cairo Township
 Matachewan, Ontario
 Scale 1:50 1 November 1988
 Excalibur International Consultants Ltd.
 J.L. Tindale & Associates Inc.

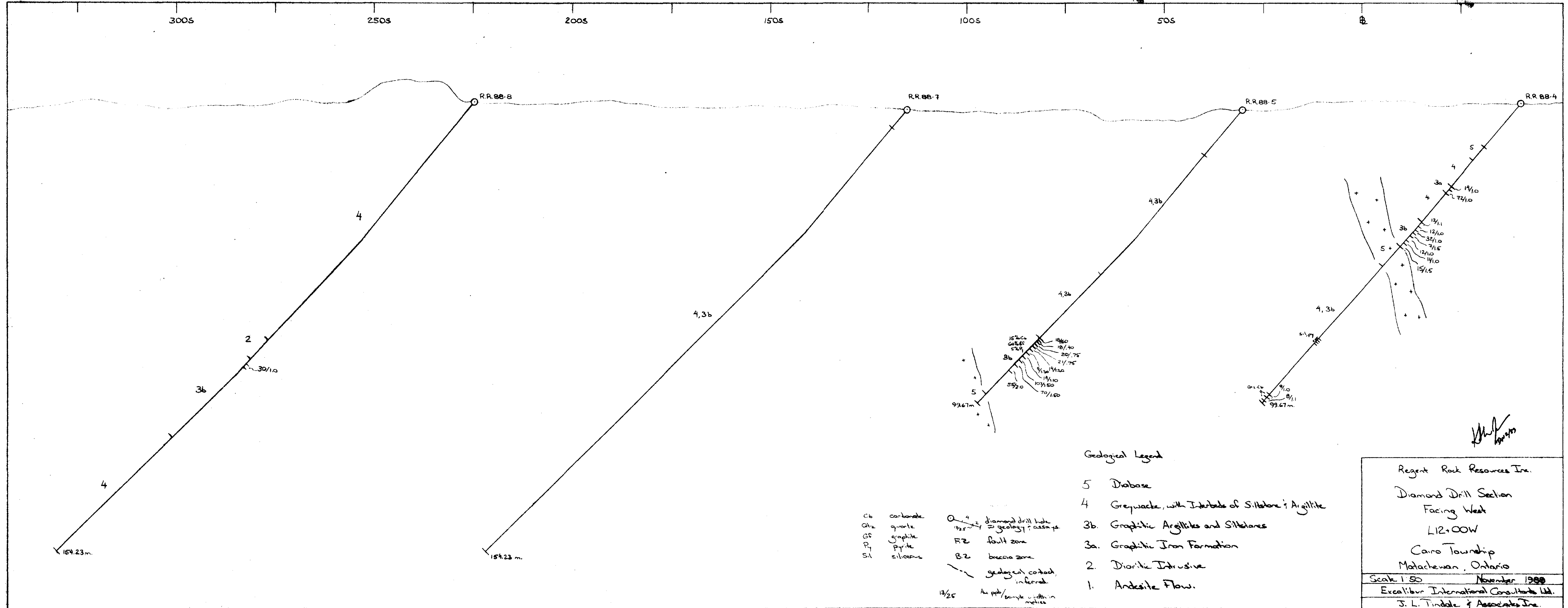


41P15NE8389 28 CAIRO



Regent Rock Resources Inc.
 Diamond Drill Section
 Facing West
 L9+00W
 Cairo Township
 Matachewan, Ontario
 Scale 1:50 December 1988
 Excalibur International Consultants
 J. L. Tindale & Associates Inc.





Geological Legend

- 5 Diabase
- 4 Greywacke, with Interbeds of Siltstone & Argillite
- 3b. Graphitic Argillites and Siltstones
- 3a. Graphitic Iron Formation
- 2. Dioritic Intrusive
- 1. Andesite Flow.

Cb carbonate
 Qtz quartz
 Gr graphite
 Py pyrite
 Sil siliceous
 diamond drill hole
 geology; assume pt.
 FZ fault zone
 BZ breccia zone
 geological contact, inferred
 13/25 At ppt/sample within metres

Regent Rock Resources Inc.
 Diamond Drill Section
 Facing West
 L12+00W
 Cairo Township
 Matachewan, Ontario
 Scale 1:50 November 1988
 Excalibur International Consultants Ltd.
 J. L. Tindale & Associates Inc.

