



41P15NE8356 2.1721 CAIRO

010

Ecstall Mining Ltd.
Report on Geophysical Work
in
Cairo Township

Claims: L 380540, L 380541

A magnetic survey was carried out over this group of 2 contiguous claims, located in Lot 6, Con. II and III, Cairo Township.

Access to the property is by means of Highway 66 which passes through the claims.

The area has been mapped by H.L. Lovell (O.D.M. Geol. Rept. 51). The geologic map which accompanies the report (Map 2110) shows the north-west part of claim L 380540 and the western part of L 380541 to be underlain by an assemblage of basalts and andesites, locally bleached, silicified and sericitized. East of the volcanics is syenite porphyry and coarse-grained syenite. Two drill holes, collared at a

FEBRUARY, 1975

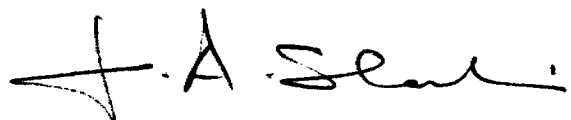
location near the northern boundary of L 380540, intersected silicified volcanics, tuffs cut by syenite dikes, and a wide shear zone.

Survey Results:

The magnetic results are not consistent with the geological map. The southern parts of both claims are magnetically high and show pronounced E-W magnetic trends, whereas to the north the magnetic field strength and relief decrease. This would suggest that the southern and northern parts are underlain by volcanics and syenite, respectively, with the contact corresponding to the 61000 gamma contour which runs from 2+30N on Line 9W to 10+20N on Line 12E. There is evidence for considerable interfingering of the two rock types along the contact.

The narrow linear magnetic highs within the volcanics are caused by magnetite-rich bands. These do not appear to extend into the syenite.

JAS:ss



J. A. Slankis.



41P15NE8356 2.1721 CAIRO

300

File: 2.1721

by hand

TO BE ATTACHED AS AN APPENDIX TO TECHNICAL REPORT
FACTS SHOWN HERE NEED NOT BE REPEATED IN REPORT
TECHNICAL REPORT MUST CONTAIN INTERPRETATION, CONCLUSIONS ETC.

Type of Survey(s) Geophysical
 Township or Area Cairo Township
 Claim Holder(s) Ecstall Mining Ltd.
P.O. Box 175 Commerce Court Toronto
 Survey Company Ecstall Mining Ltd.
 Author of Report J. A. Slankis
 Address of Author As above
 Covering Dates of Survey Oct. 1974 - Jan. 1975
 (linecutting to office)
 Total Miles of Line Cut 2.5

MINING CLAIMS TRAVERSED
List numerically

L 380540
 (prefix) (number)
 L 380541 /4N

**SPECIAL PROVISIONS
CREDITS REQUESTED**

DAYS
per claim

ENTER 40 days (includes
line cutting) for first
survey.

ENTER 20 days for each
additional survey using
same grid.

Geophysical

-Electromagnetic 40

-Magnetometer

-Radiometric

-Other

Geological

Geochemical

AIRBORNE CREDITS (Special provision credits do not apply to airborne surveys)

Magnetometer _____ Electromagnetic _____ Radiometric _____
(enter days per claim)

DATE: Feb. 27/75 SIGNATURE: J. A. Slankis
Author of Report or Agent

L.D.

Res. Geol. _____ Qualifications 2.686

Previous Surveys

File No.	Type	Date	Claim Holder

TOTAL CLAIMS 2

OFFICE USE ONLY

If space insufficient, attach list

GEOPHYSICAL TECHNICAL DATA

GROUND SURVEYS -- If more than one survey, specify data for each type of survey

Number of Stations 230 Number of Readings 265
Station interval 50 feet Line spacing 300 feet
Profile scale
Contour interval 1000 gammas

Instrument Geometrics G 816, Proton Precession, Total Field Mag.

Accuracy - Scale constant + 1 gamma

Diurnal correction method Base Line read in 300' loops, corrected Base Line readings used to correct survey results.

Base Station check-in interval (hours)

Base Station location and value On Base Line at Line 0+00

Value = 61095 gammas

MAGNETIC

Instrument

Coil configuration

Coil separation

Accuracy

Method: [] Fixed transmitter [] Shoot back [] In line [] Parallel line

Frequency (specify V.L.F. station)

Parameters measured

ELECTROMAGNETIC

Instrument

Scale constant

Corrections made

Base station value and location

Elevation accuracy

GRAVITY

Instrument

Method [] Time Domain [] Frequency Domain

Parameters - On time Frequency

- Off time Range

- Delay time

- Integration time

Power

Electrode array

Electrode spacing

Type of electrode

INDUCED POLARIZATION RESISTIVITY

Alma Twp. - M.202

THE TOWNSHIP
OF **2-1721**
CAIRO

DISTRICT OF
TIMISKAMING

LARDER LAKE
MINING DIVISION

SCALE: 1-INCH = 40 CHAINS

LEGEND

- PATENTED LAND Ⓟ
- CROWN LAND SALE C.S.
- LEASES Ⓛ
- LOCATED LAND Loc.
- LICENSE OF OCCUPATION L.O.
- MINING RIGHTS ONLY M.R.O.
- SURFACE RIGHTS ONLY S.R.O.
- ROADS —
- IMPROVED ROADS —
- KING'S HIGHWAYS —
- RAILWAYS —
- POWER LINES —
- MARSH OR MUSKEG —
- MINES Ⓧ
- CANCELLED C.

NOTES

400' Surface Rights Reservation along the shores of all lakes and rivers

AREAS WITHDRAWN FROM STAKING				
S.R. - SURFACE RIGHTS		M.R. - MINING RIGHTS		
Section	Order No.	Date	Disposition	File
42(R.S.O. 60)		1/8/68	S.R.	15376 v.2
43(R.S.O. 70)	W.69/74	7/1/75	S.R.	177224

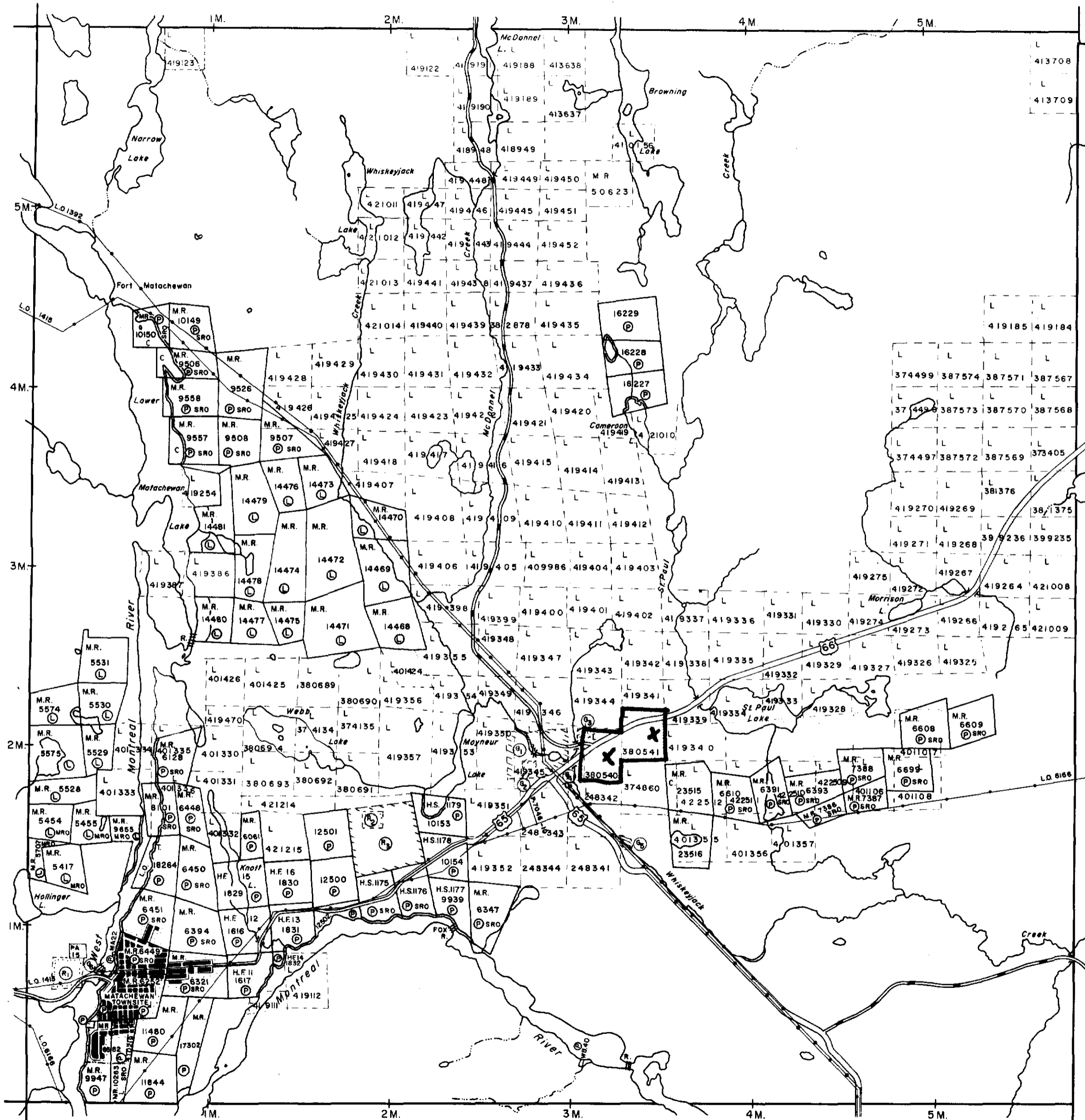
SAND and GRAVEL			
Ⓛ1	M.T.C. Gravel Pit 206	Ⓛ2	M.N.R. Gravel File 127307
Ⓛ2	M.T.C. Gravel Pit 1313	Ⓛ3	Gravel Pit 205
Ⓛ3	Gravel Pit 204, File 127307	Ⓛ4	Gravel Pit

- MINING LANDS -
DATE OF ISSUE
MAR - 3 1975
MINISTRY
OF NATURAL RESOURCES

PLAN NO. **M.210**
ONTARIO
MINISTRY OF NATURAL RESOURCES
SURVEYS AND MAPPING BRANCH

Powell Twp. - M.241

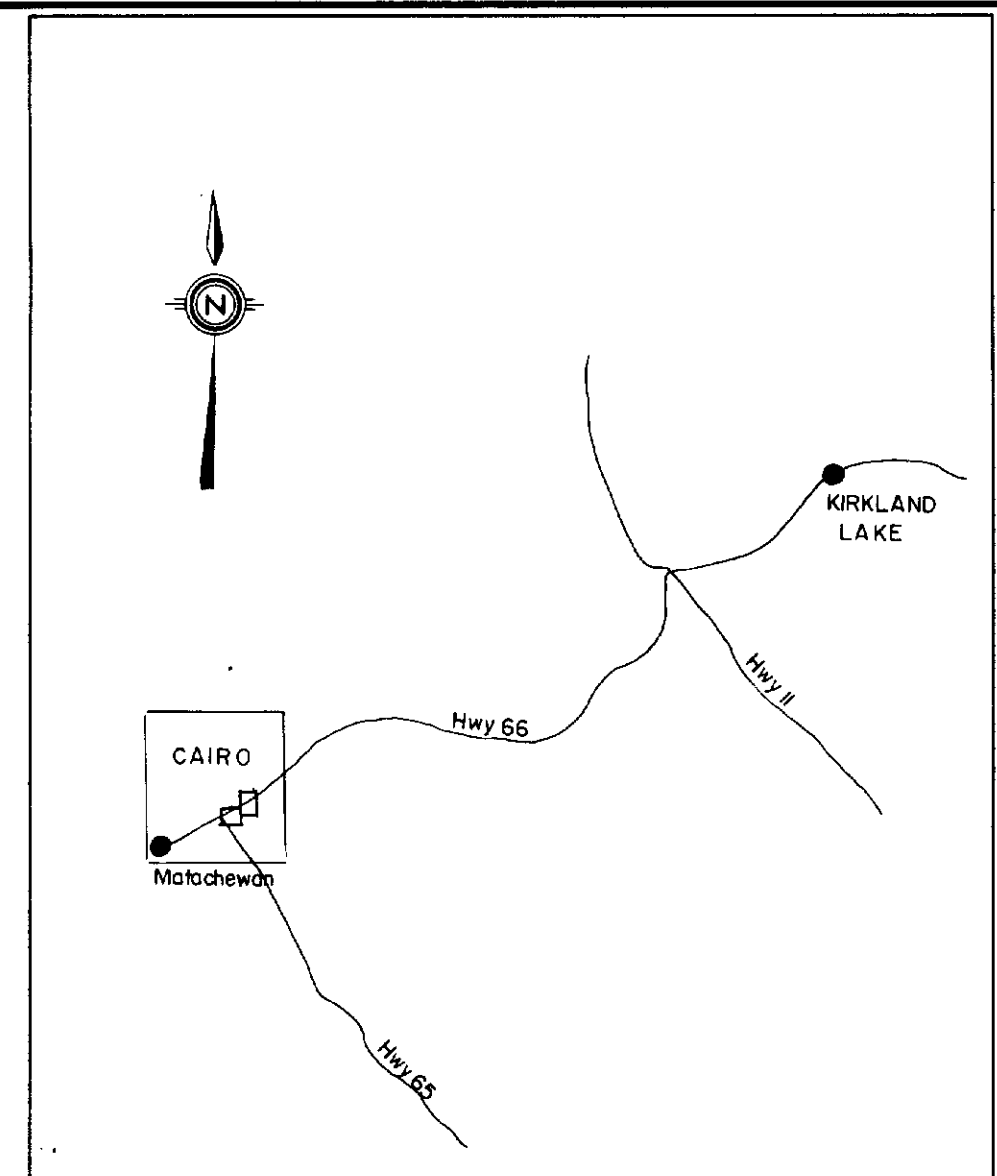
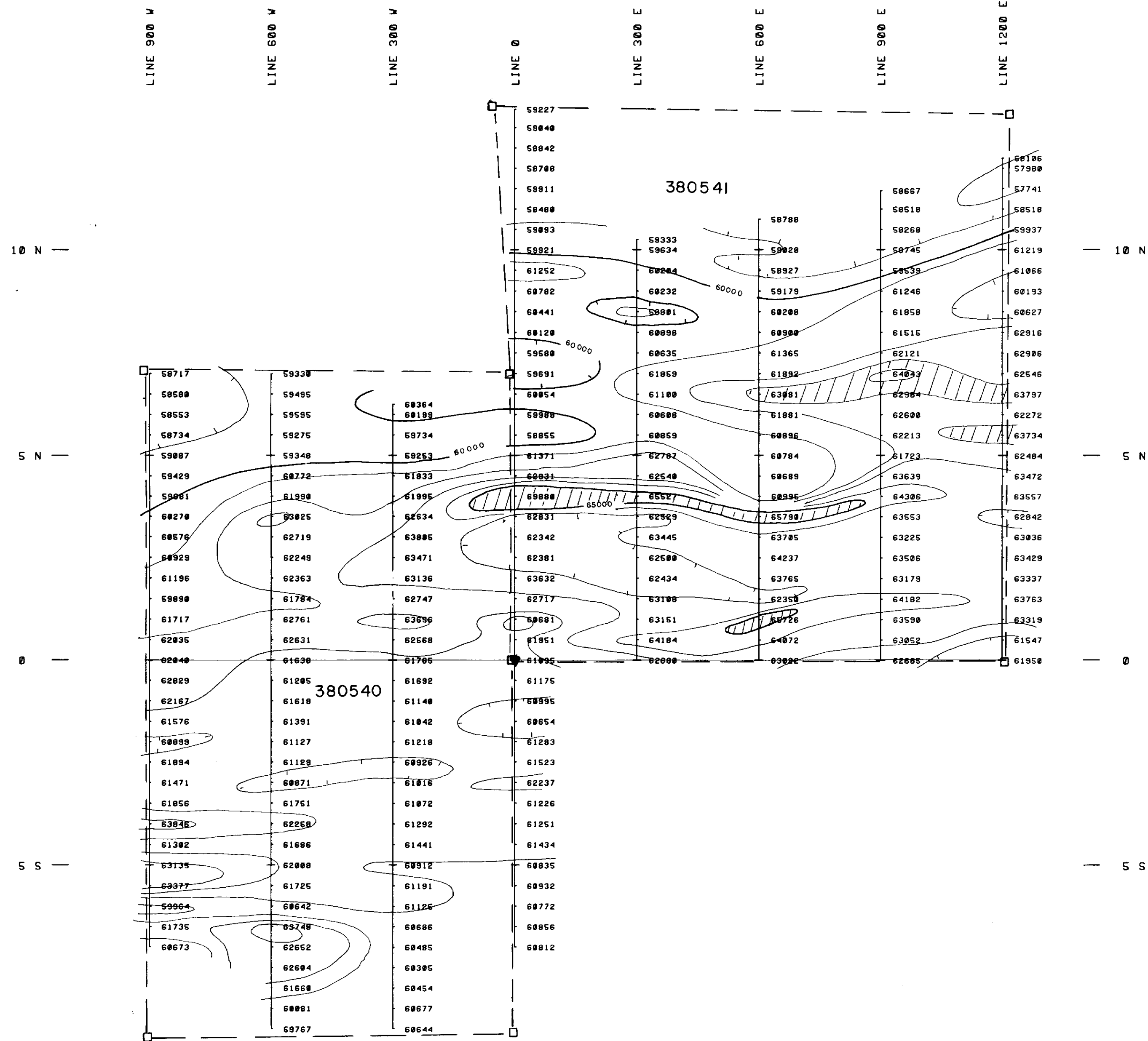
Flavelle Twp. - M.220



Kimberley Twp. - M.226



41P15NE8356 2.1721 CAIRO



KEY MAP



LEGEND

INSTRUMENT : GEDMETRICS G816
 TYPE : PROTON PRECESSION. TOTAL FIELD
 READINGS IN GAMMAS

▼ Magnetic Base Station



ECSTALL MINING LTD.	
MAGNETIC SURVEY	
CAIRO 24	
WORK BY	DATE
	Dec. 1974



J.A. Storti 27/2/72