

DIAMOND DRILLING



42A01NE0004 18 MORRISETTE

010

TOWNSHIP: MORRISETTE

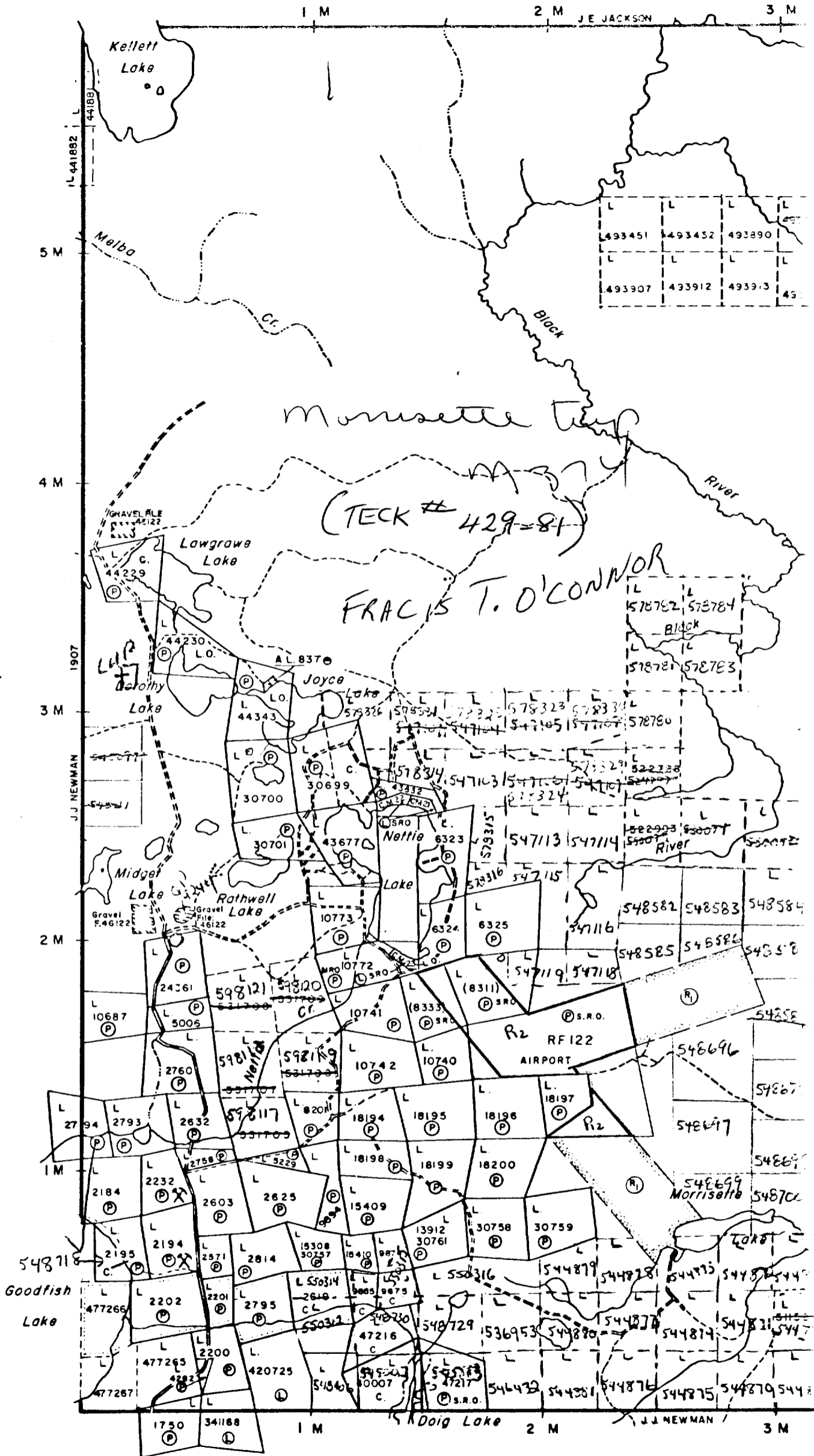
REPORT No.: 18

WORK PERFORMED BY: Francis T. O'Connor

<u>CLAIM No.</u>	<u>HOLE No.</u>	<u>FOOTAGE</u>	<u>DATE</u>	<u>NOTE</u>
L 548718	M 81-3	313.0	July/81	(1)
	M 81-4	540.0	July/81	(1)

NOTES: (1) #429-81 (Teck Twp).

Bernhardt Twp.(M.327)



Lebel Twp. (



**Diamond
Drilling
Log**

MORRISSETTE

Fill in on
every page

Drilling Company **PARTRICK HARRINGTON,**
P.O. Box 282, KIRKLAND LAKE, Ontario P0V 5M9

Date Hole Started **July 21/81** Date Completed **July 25/81**

Exploration Co., Owner or Optionee
**FRANCIS T. D. CONNOR, 12 TOWN DRIVE
P.O. BOX 736, KIRKLAND LAKE, ONTARIO,
CANADA P0V 5K1**

Collar Elevation
Bearing of hole from true North
Total Footage
Dip of Hole at Collar

Date Logged
Date Submitted
Logged by
Submitted by (Signature)

1981.09.16
Submitted by (Signature)
F. PLOEGER
150°
313'
43°

Location of hole in relation to a fixed point on the claim.
EAST OF BASE TOWER
TOWNSHIP LINE 40.
EAST OF SURVEY PIN OF
COTTAGE LOT 50.

Map Reference No.
Location (Twp., Lot, Con. or Lat. and Long.)
Property Name

2-548718
MORRISSETTE TOWNSHIP
NORTH ON GOODRICH LAKE.
0' CONNOR, F. T.

Footage From To	Rock Type	Description Colour, grain size, texture, minerals, alteration, etc.	Planar Feature Angle *	Core Specimen Footage †	Your Sample No.	Sample Footage		Sample Length	Assays †	
						From	To			
0	70	Casing								
70	145-6	A Feldspar - Qtz porphyry with a light greenish grey fine-grained matrix. Feldspars 30-45% and 1 mm 6mm. Quartz phenocrysts 10%, up to 1 cm & rounded. Rock is variably rusted by carbonalization being acted upon by ground water? and also pervasive carbonitization in places. Qtz phenos have been remobilized into veinlets in places.								
145-6	209	pillow and flow breccias - basaltic, pale grey to med green grey aphanitic strongly deformed (tectonically). Very well fractured (brittly) the fractures are filled with Qtz-carb. and chlorite with one section from 174-184, being very strongly brecciated and the fractures filled with graphite. -throughout this unit, pyrite and chalcopryrite occur as lenses and patches along the fractures.								
209	313	Series of basaltic flows - aphanitic to fine grained-grey - some minor flow top breccias - this section is moderately fractured and contains some minor Qtz-carb veins to 2 inches - minor disseminated pyrite and chalcopryrite								
313	313	END OF HOLE								

* For features such as foliation, bedding, schistosity, measured from the long axis of the core.
† Additional credits available. See Assessment Work Regulations.

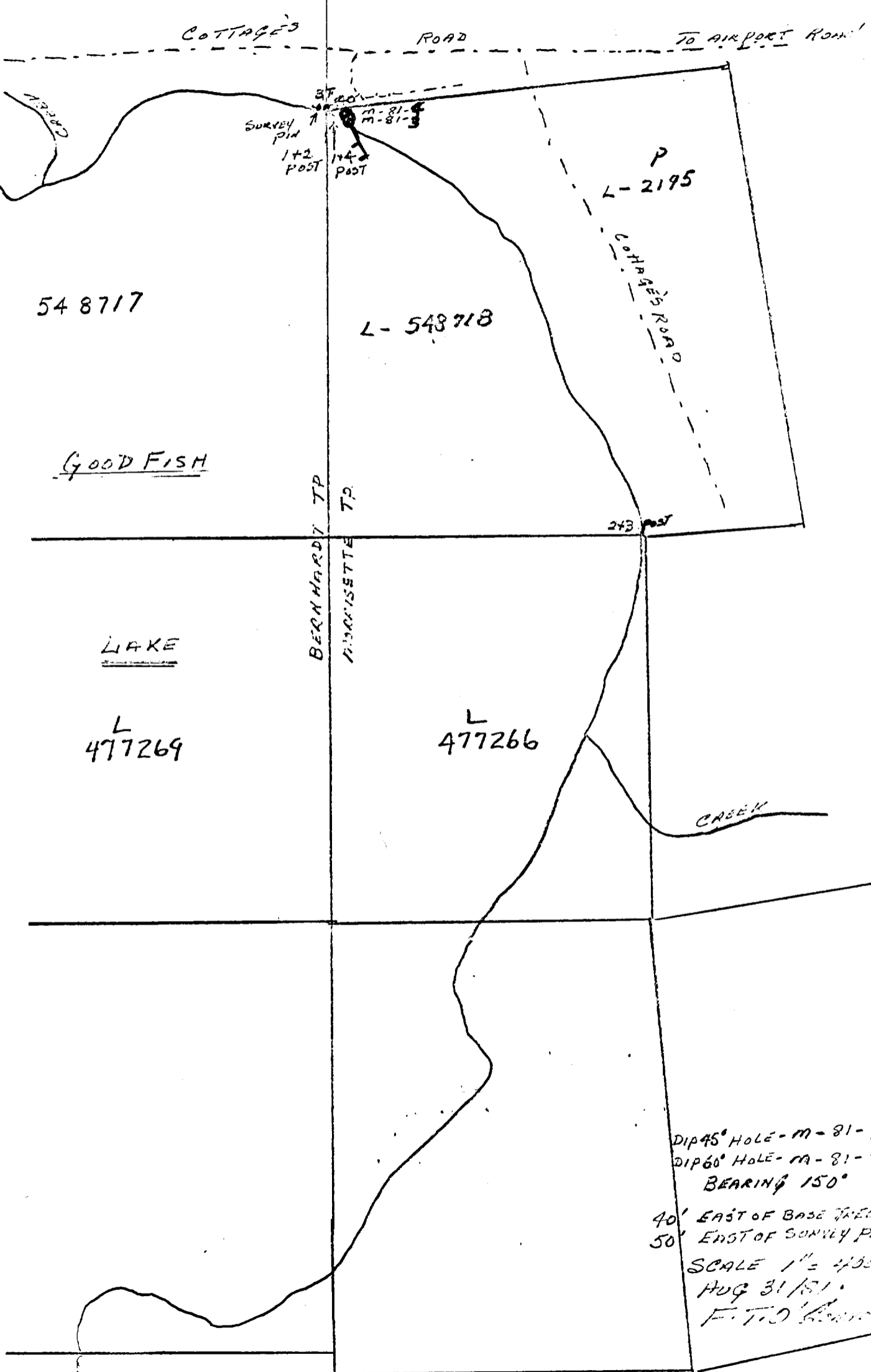


Footage		Rock Type	Description Colour, grain size, texture, minerals, alteration, etc.	Planar Feature Angle *	Core Specimen Footage †	Your Sample No.	Sample Footage		Sample Length	Assays †
From	To						From	To		
0	62	Casing								
62	219		-Feldspar quartz porphyry - scattered feldspar phenocrysts to 1 cm to make up 30-40% of the rock-occasional scattered rounded quartz eyes (to 1 cm) 10%							
219	249		-from 62-182.5' the felds-qtz porphyry is well altered (carbonatized) and fractured - core is a buff-brown colour and very crumbly -from 182.5 to 219 - the porphyry is fresh and a medium grey -flow top and pillow by - mafic - some tuffaceous lenses -medium grey - moderately to well fractured with chlorite carbonate and epidote filling the fractures - minor pyrite - pyrrhotite and chalcopyrite also found disseminated and in lenses along fractures.							
249	477		-massive basalt flows - series of flows with narrow flow top breccia units - rock is generally dark to medium grey to olive grey -well fractured in places with epidote qtz-carb. and chlorite filling the fractures - some dissem and lenses of pyrite and chalc? ? -some qtz veins to 3" - from 389-403 - well fractured section, sheared in part with up to 1 foot wide qtz vein - from 4185 - 423 felsic dike pink coarse grained no well defined phenos but texture resembles that of felds-qtz-porph above -feldspar-qtz porphyry as above - 182.5-219							
477	540									

Drilling Company *PATRICK MINING LTD*
 P.O. Box 282, Kirkland Lakes Alberta
 Date Hole Started *July 29/81* Date Completed *Aug 17/81*
 Exploration Co., Owner or Optionee
*FRANCIS FIDELMUS, 18 TORBURN DRIVE
 P.O. BOX 282, KIRKLAND LAKES, ALBERTA
 CANADA*
 Collar Elevation
 Bearing of hole from true North *156°* Total Footage *540*
 Logged by *F. PLOEGER* Submitted by (Signature) *Francis Fidelmus*
 Date Logged 1981.09.16 Date Submitted
 Dip of Hole at Collar *60°*
 Location of hole in relation to a fixed point on the claim.
EAST OF BASE LINE ON TOWNSHIP LINE 40', EAST OF SURVEY PIONEER COTTAGE LOT 56'
 Map Reference No. Location (Twp., Lot, Con. or Lat and Long.)
NEAR THE TOWNSHIP LINE NORTH ON FOODCISST LAKES
 Property Name
O'CONNOR, F. T.

* For features such as foliation bedding schistosity measured from the long axis of the core

† Additional credit available. See Assessment Manual



DIP 45° HOLE - M-81-3 - 315'
 DIP 60° HOLE - M-81-4 - 540'
 BEARING 150°
 40' EAST OF BASE TREE AND 1/2 POST
 50' EAST OF SURVEY PIN Cottages Lot
 SCALE 1" = 400'
 AUG 31/81
 F. T. O. [unclear]