



42A01NE0006 14 MORRISSETTE

010

Diamond Drilling

Township Morrisette

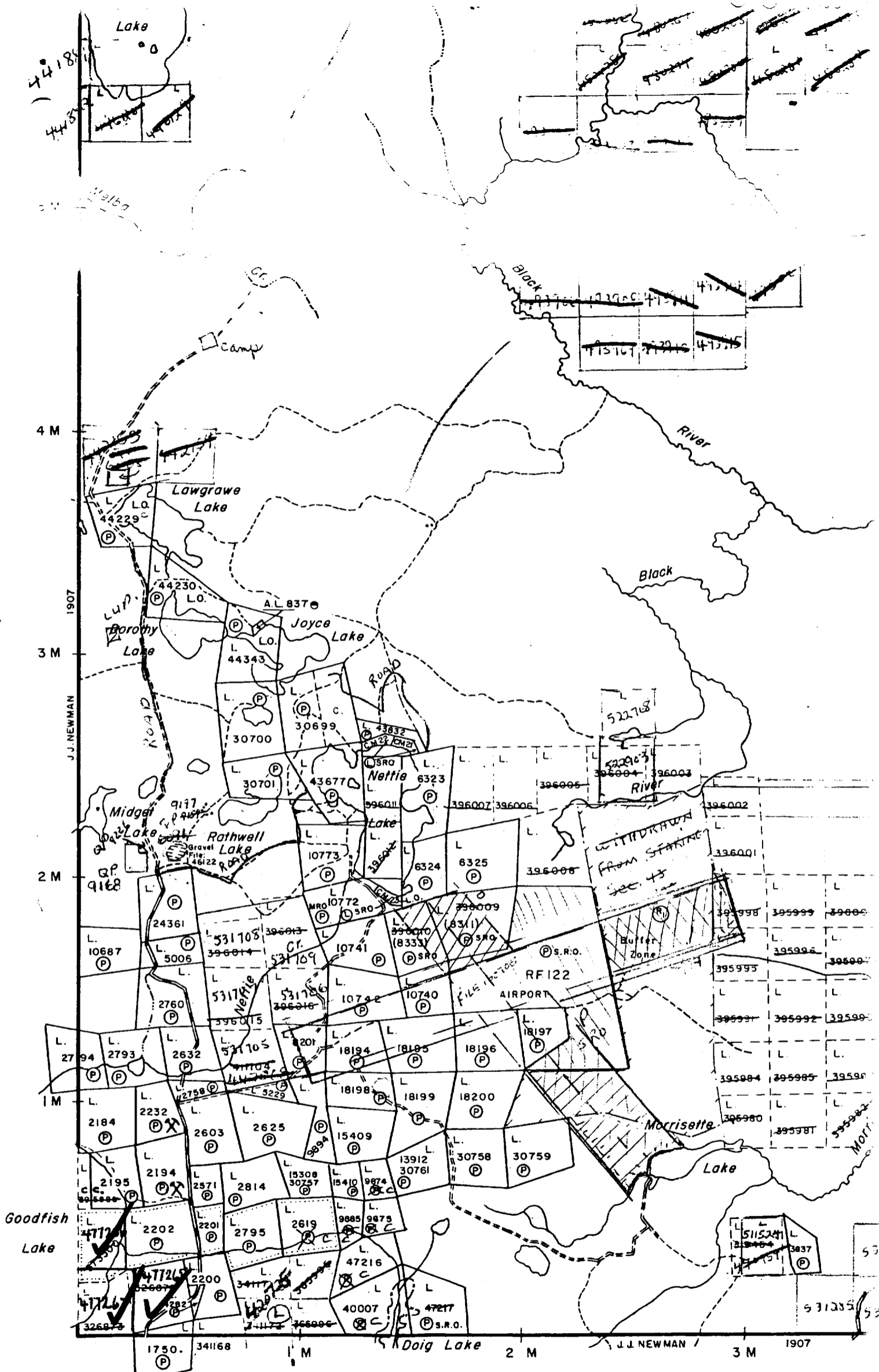
Report N^o 14

Work performed by: Haas-Warner Mining Limited

Claim N ^o	Hole N ^o	Footage	Date	Note
L 477265	79-1	477.0	Aug/79	(1)
	79-2	667.0	Aug/79	(1)

Notes: (1) # 182-79

Bernhardt Twp.(M.327)



Morrisette twp
 M324

#182-79
 Lebel Twp.(M.35

HAAS-WARNER MINING LTD.

THE MINING ACT - DEPARTMENT OF MINES
DIAMOND DRILLING LOG

Start a new page for every new hole, but fill in top portion of form only on first page for each hole.

FILL IN ON EVERY PAGE

HOLE NO. 79-1

PAGE NO. 1

DRILLING COMPANY Haas-Warner Mining Limited		BEARING OF HOLE FROM TRUE NORTH N54° E		DIP OF HOLE AT collar 45°	
DATE HOLE STARTED Aug. 10/79		DATE LOGGED Aug. 22/79		TOTAL FOOTAGE 477	
DATE COMPLETED Aug. 13/79		DATE SUBMITTED Aug. 22/79		LOGGED BY <i>F. J. [Signature]</i>	
EXPLORATION CO., OWNER OR OPTIONEE		SUBMITTED BY (Signature) <i>[Signature]</i>		LOCATION OF HOLE IN RELATION TO A FIXED POINT ON THE CLAIM MORRISSETTE MORRISSETTE	
PROPERTY NAME Lebel Kirkland?		LOCATION (Tp., Lot, Con. OR Let. and Long.) Morrisette Tp. Claim L 477265		CLAIM NO.	

FOOTAGE FROM TO	ROCK TYPE	DESCRIPTION Colour, grain size, texture, minerals, alteration, etc.	PLANAR FEATURE ANGLE*	CORE SPECIMEN FOOTAGE †	YOUR SAMPLE NUMBER	SAMPLE FOOTAGE		ASSAYS †
						FROM	TO	
0	71	Casing (left in hole) Basal till						
71	51	Mostly fg gnst cut by mostly narrow (<4mm) white qcv with coarser grained (<3mm phenocrysts) white fel at 14' possible central pt of flow. Very little py most of it confined to fractures. At 41' is a 5cm wide white qcv, & another at 47' is wider (but core broken so can't determine exact width).						
51	70	Paler (yellowish) greenstone, with darker green (chloritic) alteration along fractures. Colloform & cubic pyrite 1cm diam. Fragment of bedded sediment (or tuff) at 51'. At 61' is long section of hyaloclastite that is more colloform than typical.						
70	121	Mostly typical hyaloclastite (lacey, appearance, broken angular shards etc).						
121	187	Intraformational conglomerate or flow top breccia (beds 45° to core axis). Gradational contact into reddish (little hem in qcv also) crystal tuff or porphyry dike with white fel phenos < 3mm long. Dike only if "Syenitized" pervasively a wet little-consolidated sediment.						
187	214	Feldspar porphyry dike or crystal tuff						
214	217	Gradational contact with flow top breccia or intraformational tuff.						

* For features such as foliation, bedding, schistosity, measured from the long axis of the core.

† Additional credit available. See Assessment Work Regulations.



THE MINING ACT - DEPARTMENT OF MINES
DIAMOND DRILLING LOG

Start a new page for every new hole, but fill in top portion of form only on first page for each hole.

FILL IN ON EVERY PAGE

HOLE NO. **79-1**
CLAIM NO. _____

PAGE NO. **2**

DRILLING COMPANY		DATE HOLE STARTED		DATE COMPLETED		COLLAR ELEVATION	BEARING OF HOLE FROM TRUE NORTH		DIP OF HOLE AT		LOCATION OF HOLE IN RELATION TO A FIXED POINT ON THE CLAIM					MAP REFERENCE NO.		PROPERTY NAME		
FROM	TO	ROCK TYPE	DESCRIPTION	LOGGED BY	DATE LOGGED	DATE SUBMITTED	SUBMITTED BY (Signature)	COLLAR	ft	ft	ft	ft	PLANAR FEATURE ANGLE +	CORE SPECIMEN FOOTAGE +	YOUR SAMPLE NUMBER	FROM	TO	SAMPLE FOOTAGE LENGTH	ASSAYS +	
217	277		Pale grey flow breccia or intraformational conglomerate																	
277	309		Pale yellowish green (sericitic) massive mostly fg rock																	
309	311		Carbonaceous ie "graphitic" section of largely broken core (chips).																	
311	318		Brecciated sericitic rock																	
318	327		Brecciated sericitic rock with numerous carbonaceous slips.																	
327	417		Pale but not very sericitic brecciated (tuff?) with carbonaceous slips.																	
417	424		Interbedded pale rock as above, with gf, & white fel x tuff (white fel grains < 8 mm long)																	
424	447		Interbedded X tuff and the pale fg grey rock that may be tuff.																	

+ For features such as foliation, bedding, schistosity, measured from the long axis of the core.

+ Additional credit available. See Assessment Work Regulations.

THE MINING ACT - DEPARTMENT OF MINES
DIAMOND DRILLING LOG

Start a new page for every new hole, but fill in top portion of form only on first page for each hole.

FILL IN ON EVERY PAGE

HOLE NO. 79-2

PAGE NO. 1

DRILLING COMPANY Heath & Sherwood		COLLAR ELEVATION 1050	BEARING OF HOLE FROM TRUE NORTH 1700	TOTAL FOOTAGE 667	DIP OF HOLE AT collar 45°	LOCATION OF HOLE IN RELATION TO A FIXED POINT ON THE CLAIM 300'W along 260° Baseline from hole 79-1	MAP REFERENCE NO.	CLAIM NO.		
DATE HOLE STARTED Aug. 14/79	DATE COMPLETED Aug 16/79	DATE LOGGED Aug 22/79	LOGGED BY <i>F. J. ...</i>	SUBMITTED BY (Signature) <i>F. J. ...</i>		PROPERTY NAME Lebel Kirkland?				
EXPLORATION CO., OWNER OR OPTIONEE Haas-Warner Mining Limited		DESCRIPTION Colour, grain size, texture, minerals, alteration, etc.			PLANAR FEATURE ANGLE	CORE SPECIMEN FOOTAGE	YOUR SAMPLE NUMBER	SAMPLE FOOTAGE FROM TO	SAMPLE LENGTH	ASSAYS †

FOOTAGE FROM TO	ROCK TYPE	DESCRIPTION	PLANAR FEATURE ANGLE	CORE SPECIMEN FOOTAGE	YOUR SAMPLE NUMBER	SAMPLE FOOTAGE FROM TO	SAMPLE LENGTH	ASSAYS †
0 11		Casing (left in hole) in Basal till						
11 49		Fg gnst cut by numerous white qcv most less than 5mm wide, and sections with fractures containing chlorite.						
49 59		Fine and coarse bedded rock						
59 66		Fg gnst as described above.						
66 67		Interbedded fg & cg white fel. x-tuff?						
67 91		Fragmental volcanic (pale grey irregular shaped fragments in greenish matrix) interbedded with fg greenish grey rock (probably greenstone rather than greywacke).						
91 171		Back in rounded fragment "Breccia" similar to rock at 24' with irregular shapes of qc, mostly white.						
171 191		Fg massive to banded volcanic						
191 213		Flow breccia similar to 1271. Much of it is thinly banded, possible tuff. Few bands are sericitic.						
213 247		Sericitic fg bands more numerous, with gf at 232 to 234'						
247 392		Highly fractured pale yellowish grey rock with gf in fractures. QV at 301' to 304'						

† Additional credit available. See Assessment Work Regulations.

Start a new page for every new hole, but fill in top portion of form only on first page for each hole.

DRILLING COMPANY		LOCATION OF HOLE IN RELATION TO A FIXED POINT ON THE CLAIM	
DATE HOLE STARTED	DATE COMPLETED	MAP REFERENCE NO.	
EXPLOKATION CO., OWNER OR OPTIONEE		LOCATION (Tp, Lot, Con. OR Lat. and Long.)	
COLLAR ELEVATION	BEARING OF HOLE FROM TRUE NORTH	PROPERTY NAME	
DATE LOGGED	LOGGED BY		
DATE SUBMITTED	SUBMITTED BY (Signature)		
TOTAL FOOTAGE	DIP OF HOLE AT collar		
	ft		
	ft		
	ft		
	ft		

FOOTAGE FROM	TO	ROCK TYPE	DESCRIPTION	PLANAR FEATURE ANGLE +	CORE SPECIMEN FOOTAGE +	YOUR SAMPLE NUMBER	SAMPLE FOOTAGE FROM	TO	SAMPLE LENGTH	ASSAYS +
399	399		Colour, grain size, texture, minerals, alteration, etc.							
399	410		Same rock but with colloform shaped pale component, and interstitial black mineral presumed to be gf.							
410	412		The pale rock with very few fractures & consequently very little black mineral (presumed gf).							
412	417		White qcv							
417	434		Mg grey massive rock							
434	444		Mg grey rock that is fractured & in places brecciated, & fractures filled with gf.							
444	555		Interhands of colloform concentric pale shapes.							
			Fg grey rock (comparable to mg grey rock above) with gf-filled fractures, & white qcv < 2cm, & py rims around some fragments. Many fragments colloform shaped (tho broken) & zoned concentric ally, like concretions eg oolites. Colloform fragments or oolites < 10 cm long, & mostly 3mm. The colloform shapes at top of each bed are only semi-detached from the main rock, & above that ie up the dd hole the colloform fragments are detached, as tho oscillatory water currents at the aqueous interface, rolled in consolidated sed or tuff into muddy balls & eventually detached them into discrete spheres. Assuming the discrete spheres to indicate sea water interface, beds range in thickness from 11 to perhaps 20'. Beds are at 60' to core axis.							
555	557		White qcv, as usual with not much sulphide, tho few grains, py & rare blebs cp.							

+ Additional credit available. See Assessment Work Regulations.

L-477266

L-477265

L-477267

#3 indexed
in 42A01NE0065

FAULT 80° NE

AIR PORT ROAD

Propose
#3 D.D. HOLE

170°
HZ D.D. HOLE
667' DIP 45°

N 54° E
H/D.D. H. DIP 45°
397' BASE LINE 80° NE
364'

670'

#1 POST

#2 POST

#3 POST

MORRISSETTE TWP.
SCALE 1" = 200' LEVEL TWP.
HAAS-WARNER MINING LTD.
DIAMOND DRILL HOLE 1 and 2
AUG. 28/79 F.T.O'CONNOR

