



42A01NE0033 2.13780 MAISONVILLE

010

2,13780

**P R O S P E C T I N G   R E P O R T**

**O N   T H E**

**S E S E K I N I K A   L A K E   P R O P E R T Y**

**M A I S O N V I L L E   T O W N S H I P**

**L A R D E R   L A K E   M I N I N G   D I V I S I O N**

**RECEIVED**

**DEC 18 1990**

**MINING LANDS SECTION**

**BY: C A R L   P.   FORBES** *2.2689*

**November 4, 1990  
Kirkland Lake, Ontario**



42A01NE0033 2.13780 MAISONVILLE

010C

	Page Number
INTRODUCTION	1
LOCATION AND ACCESS	1
HISTORY	2
GEOLOGY	2,3
WORK PROGRAM	3,4,5
CONCLUSIONS	5,6

**APPENDED**

FOUR ASSAY SHEETS  
2 ASSAY INVOICES  
STRIPPING MAPS "A" TO "E" (5)  
BULLDOZER INVOICES (5)  
HYDRAULIC STRIPPING INVOICE

**INTRODUCTION-** This report describes a surface exploration program conducted on the Sesekinika Lake gold property of Premier Explorations Inc. located in Maisonville Township, Larder Lake Mining Division, Ontario. This program was funded by the Ontario Prospectors Assistance Program and was designated as OP 90-077. Surface stripping of previously known and new showings was highly successful in furthering knowledge of the character of gold mineralization on the property. Several new veins were opened up and a number of good assays were obtained. This program has determined that more exploration work on the property is fully warranted.

**LOCATION AND ACCESS-** The property consists of 76 unpatented mining claims located in south central Maisonville Township and encompasses most of what is historically known as the Sesekinika Lake gold camp. Highway 11 passes just west of the property about 17 miles north and west of the Town of Kirkland Lake in northern Ontario. Secondary Highway 570 branches southeasterly from Highway 11 and leads to Sesekinika village which is the southwest corner of the property. Forest access roads for lumber operations afford easy access to the central and eastern parts of the property which has recently been clear cut.

**HISTORY-**

Much prospecting activity took place on the property between 1914 and 1930, but little exploration was carried out after this period. Considerable trenching was done near the southwest corner of the "Bennett" claim (L-778379) and a shaft was sunk to 530 feet on the central part of the claim in the early 1920's. In 1934 Sylvanite Gold Mines Limited drilled five holes totalling 464 feet about one half mile north of Sesekinika Townsite to test an area where gold had been discovered in numerous test pits. The presence of numerous test pits all over the property attest to a considerable amount of early prospecting activity. The only modern exploration ever carried out was done recently by Glen Auden Resources Inc. who had the property under option until December 1989. In 1985 the property was covered by airborne magnetometer and electromagnetic surveys as well as complete geological mapping. This work was followed up by considerable induced polarization surveying in 1986 which outlined a number of anomalies, some of which were drilled. A total of 13 holes were put down totalling 4,527 feet. The best value from this program was .536 oz/ton Au over a ten foot sludge sample.

**GEOLOGY-**

The property is underlain by Archean volcanic, sedimentary and intrusive rocks which are part of the Abitibi Greenstone Belt. The majority of the rocks on

the property are tholeiitic basalts of the Kinojevis Group which can be classified as iron-rich to iron-poor. Coarser grained basalts were originally mapped as gabbro intrusives, but recent work has established these coarse grained rocks as basalts. (L. Jensen O.G.S.). The more iron-rich basalts are typically dark green to black whereas the iron-poor rocks are a lighter green colour. The darker coloured rocks are usually more magnetic than the lighter coloured rocks. The volcanic sequence contains narrow interflow units consisting of chert, cherty tuffs and crystal tuffs. The basalts have been intruded by a series of felsic syenite dikes and mafic diabase dikes. Mineralization on the property occurs in either north-south or east-west striking sheared zones. Gold is present in the native form and associated with sulphides in sheared zones containing quartz veins, stringers and lenses. Gold is also found in a north-south cherty interflow unit on the eastern side of the property.

**WORK PROGRAM-** Surface stripping using a bulldozer equipped with a backhoe was done in five separate locations. Each site was washed with a high pressure pump and then mapped and sampled. These areas are described as "A" to "E" and are represented on accompanying maps. The work was carried out from September 24, 1990 to October 14, 1990 and is described below.

**"A" STRIPPING** is in the northeast part of claim L-800346 and shows a quartz-sulphide vein zone in coarse grained basalt. Seventeen samples were taken here and some good gold assays were obtained. These are shown on a sketch map scaled one inch to fifteen feet.

**"B" STRIPPING** is about 100 feet north of the "A" stripping on claim L-800346. Seven samples were taken from a sheared zone with quartz veins in coarse grained basalt. An encouraging assay was obtained at the eastern extremity of this stripping. The results are shown on a sketch map scaled at one inch to ten feet.

**"C" STRIPPING** is in the northeast part of claim L-801222. Eight samples were taken from a sheared zone with quartz veins, but returned only very low values. These are represented on a map scaled at one inch to ten feet.

**"D" STRIPPING** was done in the northwest part of claim L-800348 and the quartz filled shear zone is probably the extension of the zone exposed in "C" stripping. Most of the 21 samples taken here returned only low values, but one section assayed .354 oz/ton Au over five feet. A parallel zone about 40 feet to the north was exposed and four samples taken there yielded very low values. These samples are represented on a map scaled at one inch to fifteen feet.

**"E" STRIPPING** exposed a strong shear zone with quartz veins and considerable sulphides in the southwest part of the "Bennett" claim L-778379. The zone was trenched for several hundred feet south in the early days and probably continues to the north, giving it considerable strike length. Although good to excellent values were obtained from the eleven samples taken here, they cannot be considered representative as the surface exposure is so weathered that good samples are almost impossible to obtain. The results are represented on a map scaled at one inch to fifteen feet.

**CONCLUSIONS-**

The east-west zones in the eastern part of the property are undoubtedly related to a north-south fault zone. Some good assays were obtained in the east-west zones and there is every probability that there are more of these splay fractures from the main north-south fault. The main fault itself should be drilled as it has never had any exploration and isn't exposed anywhere. The "Bennett" zone deserves considerably more work. Good values were obtained over fair widths and length and the zone is definitely much longer than stripped. Further stripping is warranted in this area as there are also veins and alteration immediately south and west of the stripping that haven't been tested. One of Glen Auden's drill

holes tested the zone on the south boundary of the claim and returned .107 oz/ton Au over 5 feet. A series of short holes in this locality might prove to be the best way to sample this zone.

Respectfully Submitted by,

*Carl P. Forbes*

**Carl P. Forbes**

**Licence K18293**

**November 4, 1990.**



# RICK YOST DRILLING & EXPLORATION LIMITED

## Diamond Drilling Contractors

Kirkland Lake, Ontario

FROM Sesekinika job JOB No. \_\_\_\_\_ DATE Oct 10 / 90

Summary showing footage completed on ALL holes, also details of all Extra Work performed during period from \_\_\_\_\_ to \_\_\_\_\_ inclusive

HOLE No.	Depth of Hole at Start of Period	Depth of Hole at End of Period	Footage Completed During Period	Use this space for reporting extra work done for the current period; giving number of hole, nature of work, materials used, etc. and any other information you think will assist us in billing customer. GIVE DETAILS.	Distance From Well
				Work Performed With JD 450 (BACKhoe)	
			20 hrs x	<del>\$ 45.00</del>	
					\$ 3150.00
				less	1000.00
					<del>\$ 2150.00</del>
				<u>Total</u>	1100 1/2
				issued on yield	1990
					\$ 3,150.00

TOTAL

RICK YOST DRILLING & EXPLORATION LIMITED

Approved \_\_\_\_\_

ENGINEER IN CHARGE

**R-U Developments**

Box 1176 — Phone 567-7970  
Kirkland Lake, Ontario

**DAILY REPORT**

*1100. Sept 24th 1990*

Mob. From \_\_\_\_\_ To \_\_\_\_\_ X \_\_\_\_\_ Per Hr. *45.00*

**DOZER — COMMENTS**

*Stripping*

**BACK HOE — COMMENTS**

*Back Hoe Trenching*

From *8* To *47* Total *8*

From \_\_\_\_\_ To \_\_\_\_\_ Total \_\_\_\_\_

Operator: *[Signature]*

Engineer: \_\_\_\_\_

**R-U Developments**

Box 1176 — Phone 567-7970  
Kirkland Lake, Ontario

**DAILY REPORT**

*hces 25th 1990*

Mob. From \_\_\_\_\_ To \_\_\_\_\_ X \_\_\_\_\_ Per Hr. \_\_\_\_\_

**DOZER — COMMENTS**

*Stripping*

**BACK HOE — COMMENTS**

*Trenching*

From *7* To *12* Total *5*

From \_\_\_\_\_ To \_\_\_\_\_ Total \_\_\_\_\_

Operator: *[Signature]*

Engineer: \_\_\_\_\_

**R-U Developments**

Box 1176 — Phone 567-7979

Kirkland Lake, Ontario

A

**DAILY REPORT**

*Wed 26th Sept 1990*

Mob. From \_\_\_\_\_ To \_\_\_\_\_ X \_\_\_\_\_ Per Hr. *45*

**DOZER — COMMENTS**

*Trenching*

**BACK HOE — COMMENTS**

*Stripping*

From *7* To *5:30* Total *10 1/2*

From \_\_\_\_\_ To \_\_\_\_\_ Total \_\_\_\_\_

Operator: *Richard*

Engineer: \_\_\_\_\_

**R-U Developments**

Box 1176 — Phone 567-7979

Kirkland Lake, Ontario

**DAILY REPORT**

*Sept 27th 1990*

Mob. From \_\_\_\_\_ To \_\_\_\_\_ X \_\_\_\_\_ Per Hr. *45.00*

**DOZER — COMMENTS**

*Trenching  
Stripping*

**BACK HOE — COMMENTS**

From *7:30* To *5:30* Total *10*

From \_\_\_\_\_ To \_\_\_\_\_ Total \_\_\_\_\_

Operator: *Richard*

Engineer: \_\_\_\_\_

# R-U Developments

Box 1176 — Phone 567-7970  
Kirkland Lake, Ontario

# DAILY REPORT

<sup>16th</sup> Oct 15 1970

Mob. From \_\_\_\_\_ To \_\_\_\_\_ X \_\_\_\_\_ Per Hr. 47.00

### DOZER — COMMENTS

Trenching

### BACK HOE — COMMENTS

Stripping

From 7 To 4:30 Total 9 1/2

From \_\_\_\_\_ To \_\_\_\_\_ Total \_\_\_\_\_

Operator: *[Signature]*

Engineer: \_\_\_\_\_

# R-U Developments

Box 1176 — Phone 567-7970  
Kirkland Lake, Ontario

# DAILY REPORT

Tues Oct 2nd 1970

Mob. From \_\_\_\_\_ To \_\_\_\_\_ X \_\_\_\_\_ Per Hr. 45.00

### DOZER — COMMENTS

Trenching

### BACK HOE — COMMENTS

Stripping

From 8 To 4 Total 8

From \_\_\_\_\_ To \_\_\_\_\_ Total \_\_\_\_\_

Operator: *[Signature]*

Engineer: \_\_\_\_\_

**R-U Developments**

Box 1176 — Phone 567-7970  
Kirkland Lake, Ontario

File

**DAILY REPORT**

Oct 5th 1990

Mob. From \_\_\_\_\_ To \_\_\_\_\_ X \_\_\_\_\_ Per Hr. \_\_\_\_\_

**DOZER — COMMENTS**

Trenching  
1'  
From 8 To 6 Total 10

**BACK HOE — COMMENTS**

stripping  
From \_\_\_\_\_ To \_\_\_\_\_ Total \_\_\_\_\_

Operator: [Signature]

Engineer: \_\_\_\_\_

**R-U Developments**

Box 1176 — Phone 567-7970  
Kirkland Lake, Ontario

**DAILY REPORT**

Oct 6th 1990

Mob. From \_\_\_\_\_ To \_\_\_\_\_ X \_\_\_\_\_ Per Hr. \_\_\_\_\_

**DOZER — COMMENTS**

Trenching  
From 8 To 5 Total 9

**BACK HOE — COMMENTS**

stripping  
From \_\_\_\_\_ To \_\_\_\_\_ Total \_\_\_\_\_

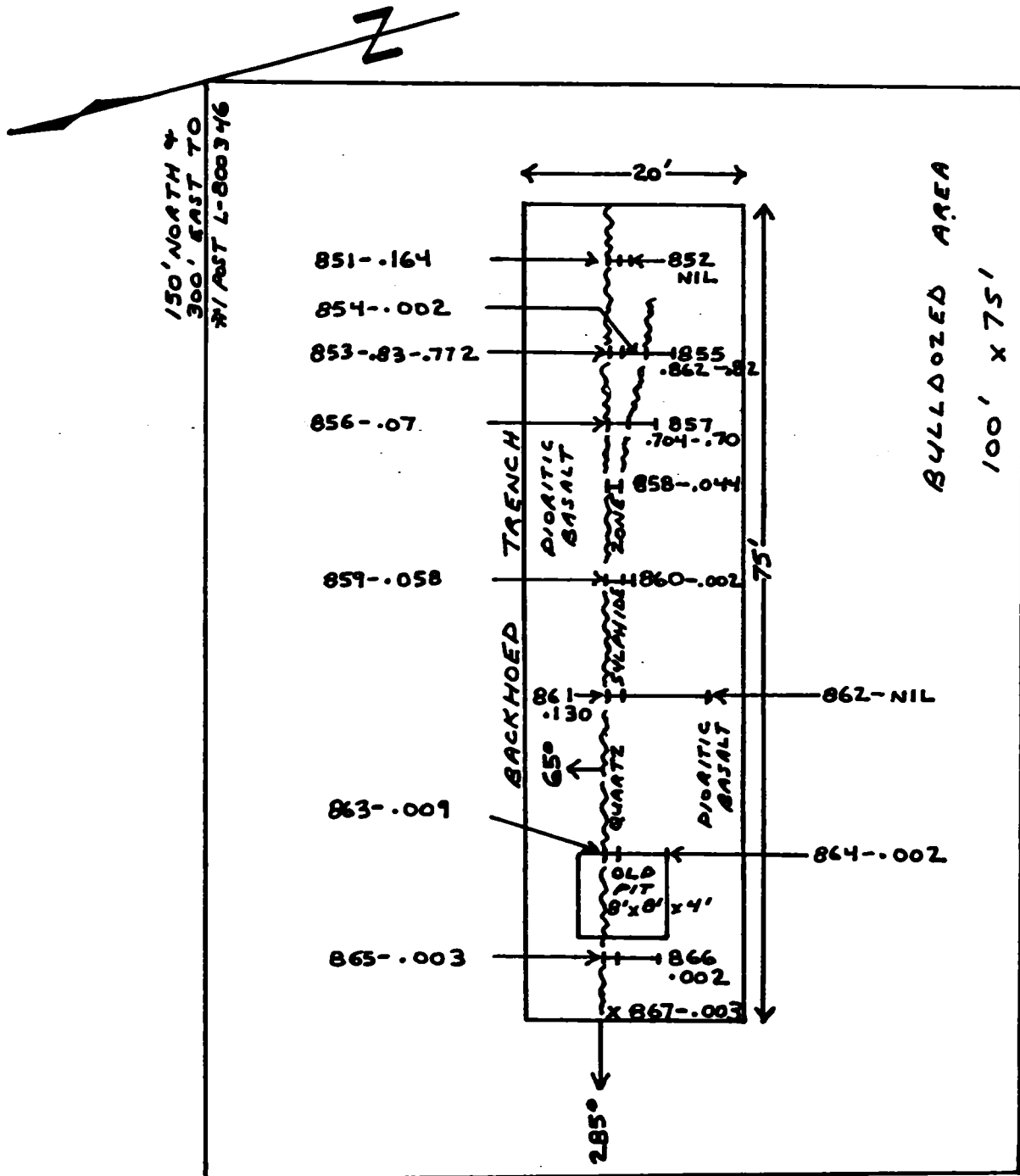
Operator: [Signature]

Engineer: \_\_\_\_\_

SKETCH MAP OF "A" STRIPPING  
CLAIM - L-800346 - MAISONVILLE TOWNSHIP  
LARDER LAKE MINING DIVISION

SCALE: 1 INCH = 15 FEET

BY C. P. FORBES  
OCT. 4, 1990



NOTE: SAMPLE NUMBERS START 121851

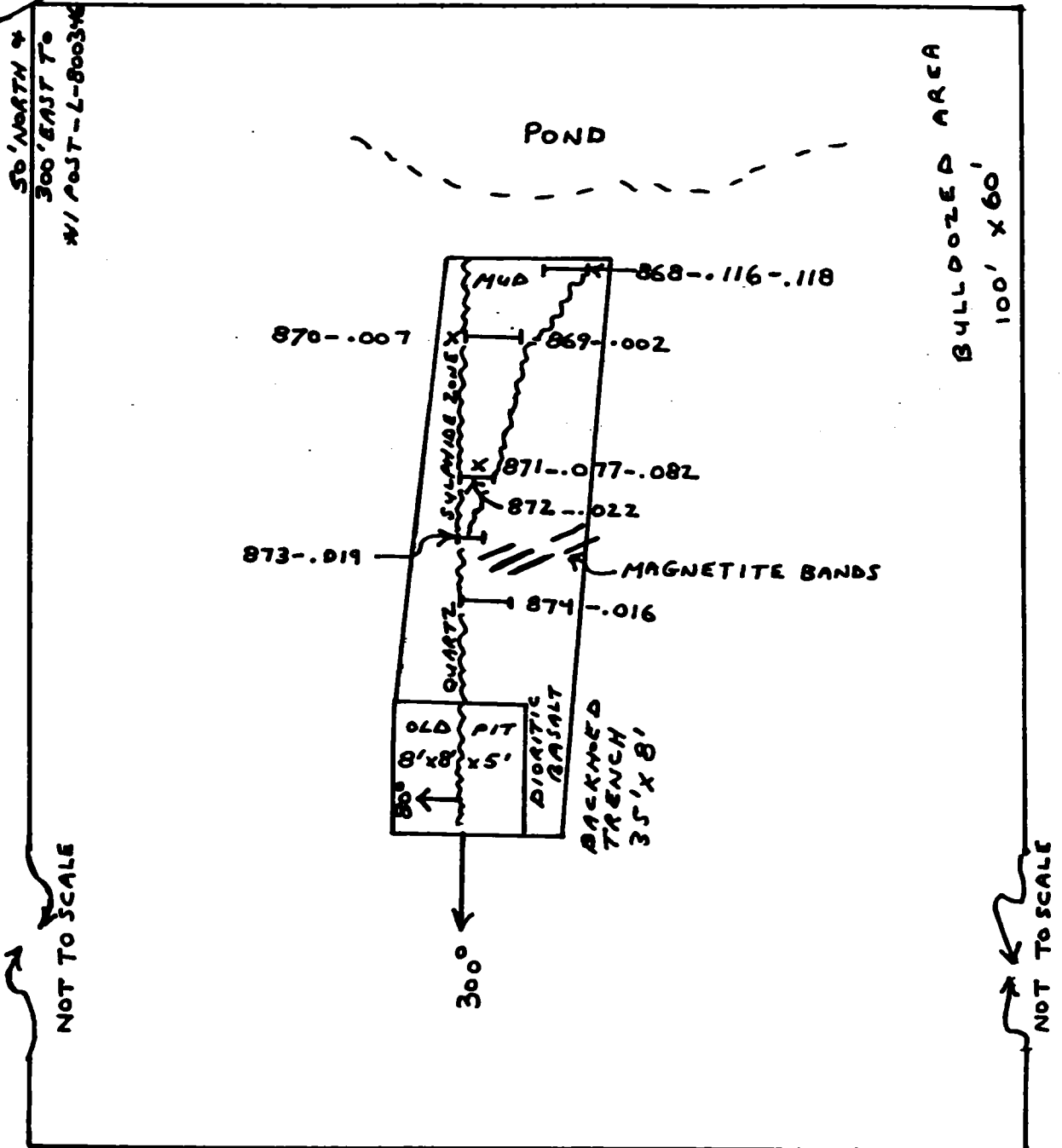
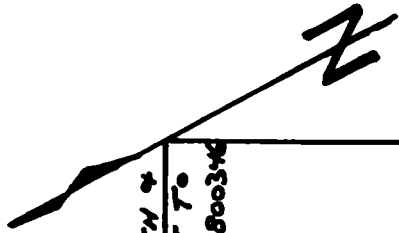
Carl P. Forbes

SKETCH MAP OF "B" STRIPPING  
CLAIM L-800346 - MAISONVILLE TOWNSHIP  
LARDER LAKE MINING DIVISION

SCALE: 1 INCH = 10 FEET

BY C. P. FORBES

OCT. 4, 1990



NOTE: SAMPLE NUMBERS START 121868

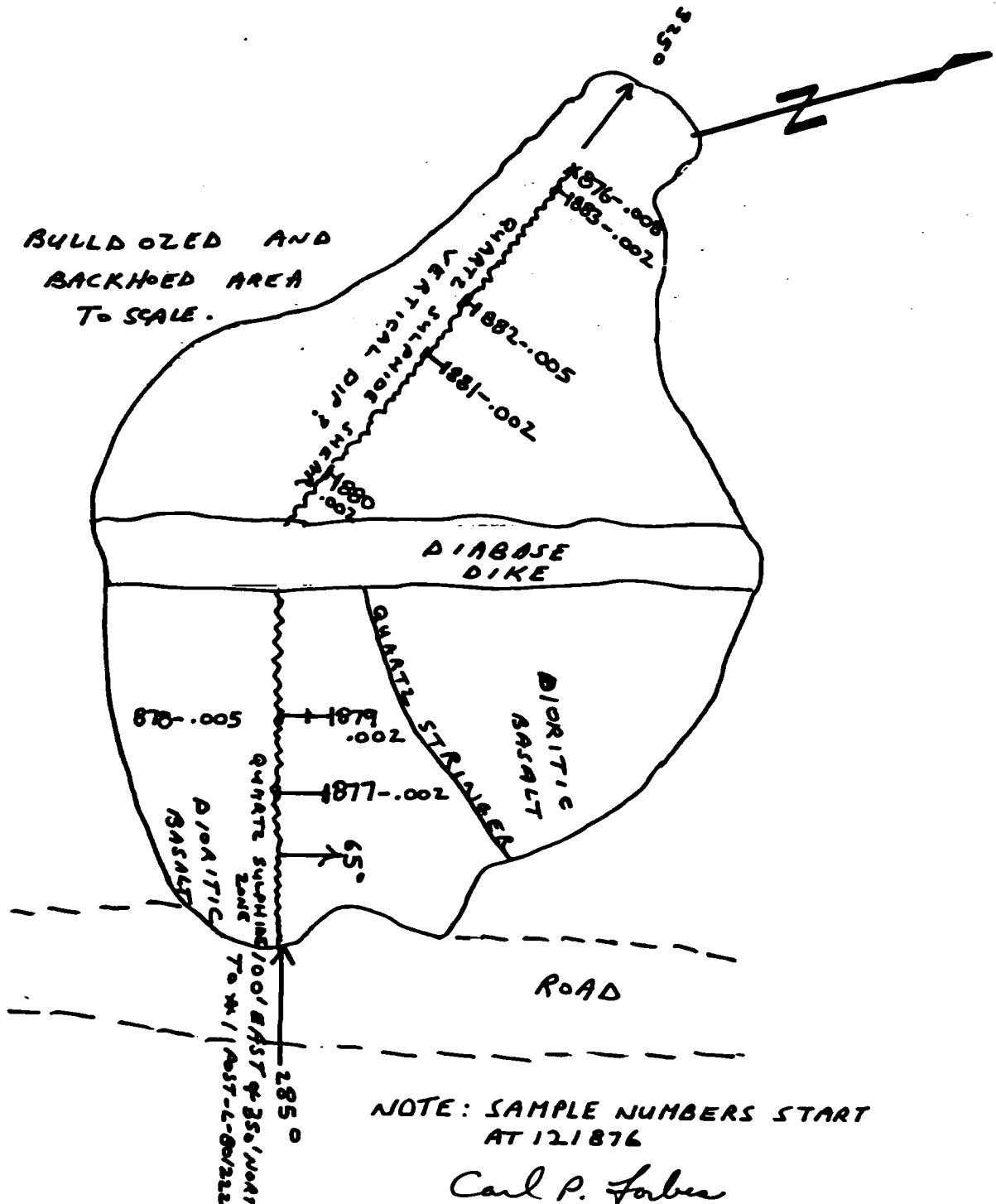
Carl P. Forbes

SKETCH MAP OF "C" STRIPPING  
CLAIM L-801222-MAISONVILLE TOWNSHIP  
LARDER LAKE MINING DIVISION

SCALE: 1 INCH = 10 FEET

BY C. P. FORBES

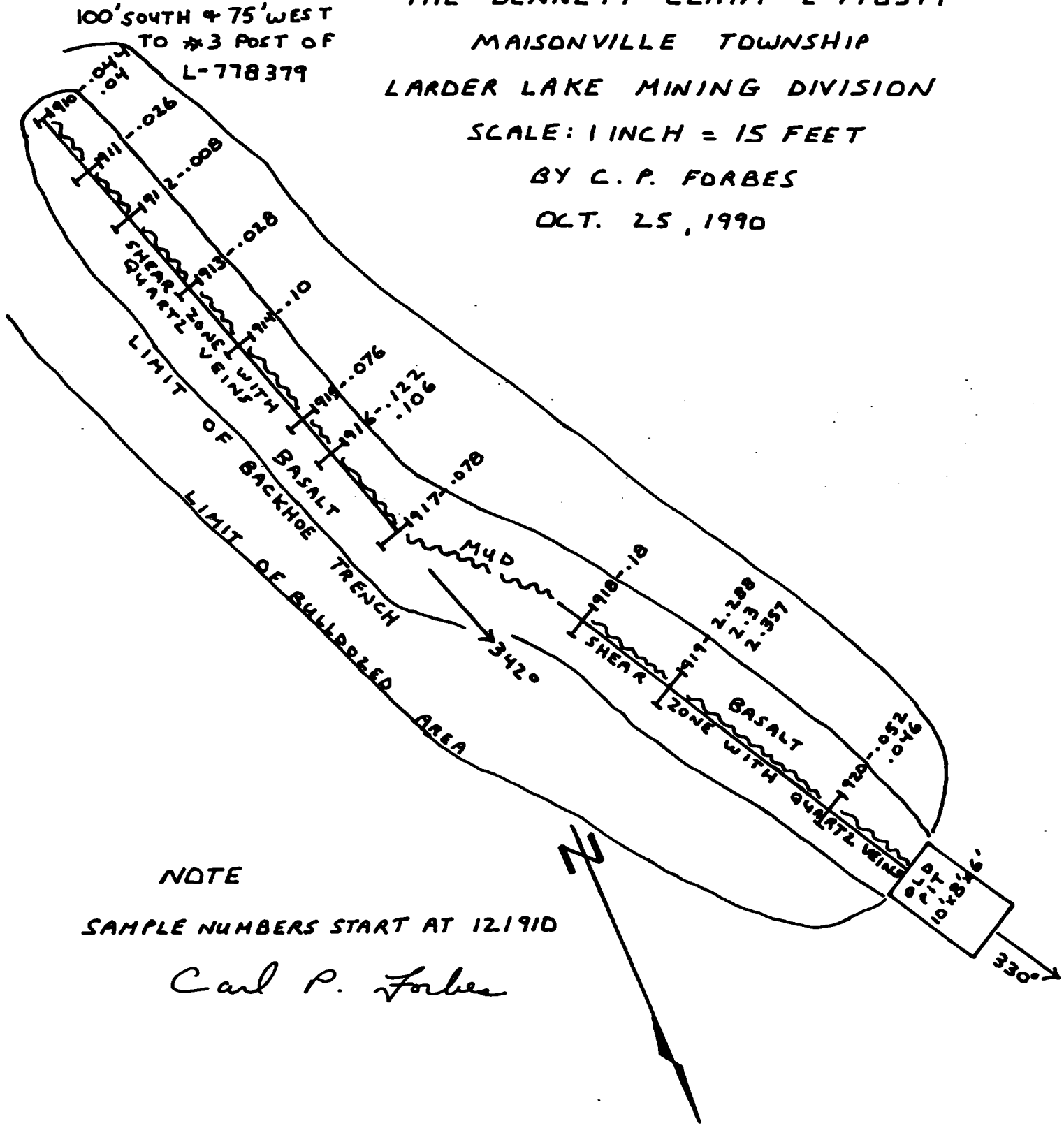
OCT. 5, 1990





SKETCH MAP OF "E" STRIPPING  
 THE BENNETT CLAIM - L-778379  
 MAISONVILLE TOWNSHIP  
 LARDER LAKE MINING DIVISION

SCALE: 1 INCH = 15 FEET  
 BY C. P. FORBES  
 OCT. 25, 1990



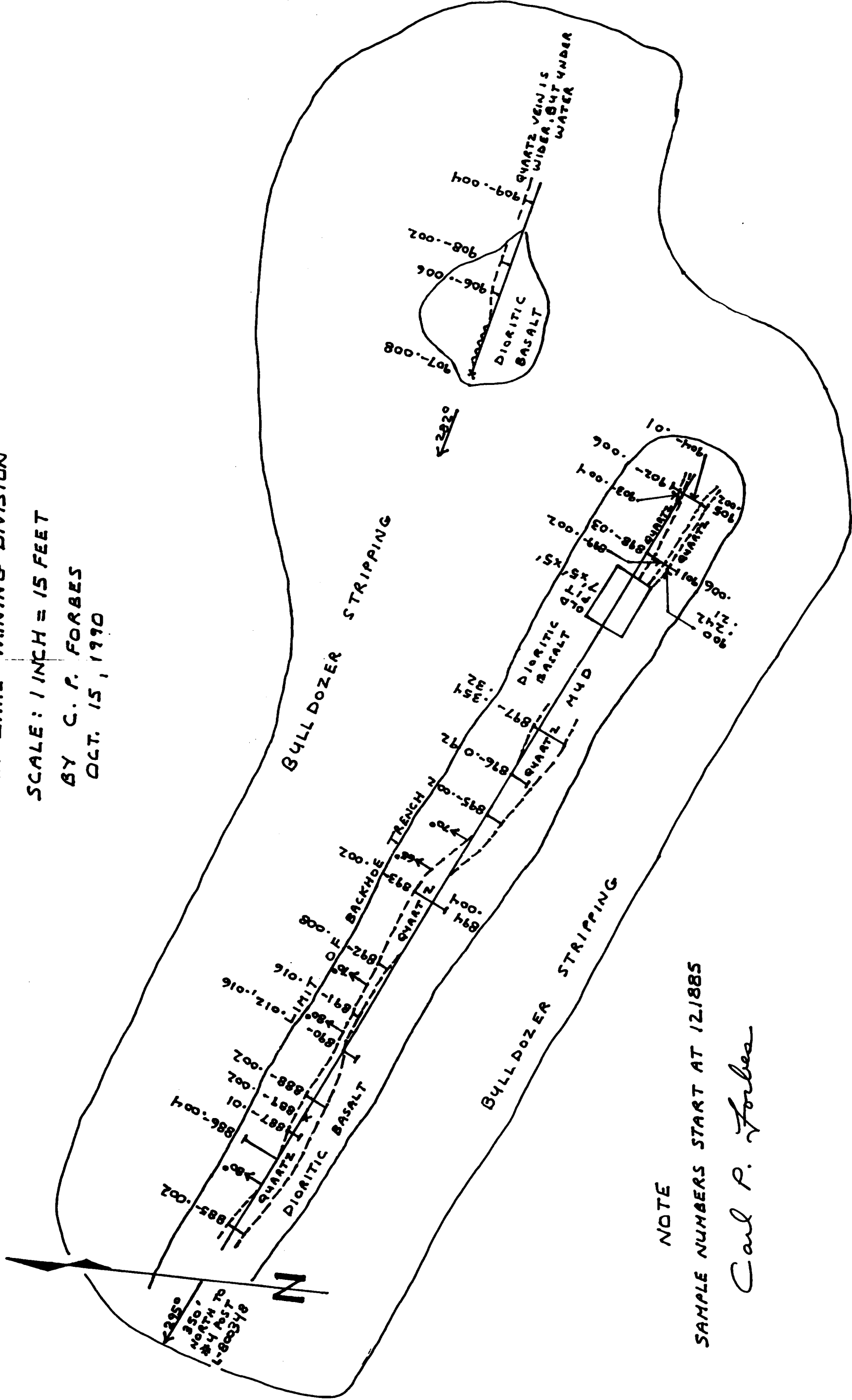
NOTE  
 SAMPLE NUMBERS START AT 121910

Carl P. Forbes

SKETCH MAP OF "D" STRIPPING  
 CLAIM L-800348 - MAISONVILLE TOWNSHIP  
 LARDER LAKE MINING DIVISION

SCALE: 1 INCH = 15 FEET

BY C. P. FORBES  
 OCT. 15, 1990



NOTE  
 SAMPLE NUMBERS START AT 121885  
 Carl P. Forbes

23418

**SWASTIKA LABORATORIES**

(A DIVISION OF ASSAYERS CORPORATION LIMITED)

P.O. BOX 10, SWASTIKA, ONTARIO POK 1T0  
TELEPHONE: (705) 642-3244 FAX (705) 642-3300

Mr. C. Forbes

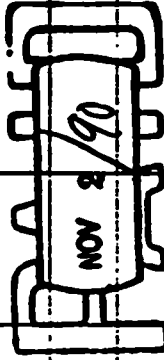
70 McCamus Ave  
Kirkland Lake, Ontario  
P2N 2J9

1.5% LATE CHARGE OVER 30  
DAYS (ANNUAL RATE 18%)



36	Au assays	\$ 8.75	\$ 315.00
36	Sample Handling	3.00	108.00
	Cert. #0w-1572-Ral. Oct. 18, 1990		

SWASTIKA LABORATORIES



VERY THANKS

• ER

TOTAL.....\$ 423.00



FACTURE/INVOICE ANALYTICAL CHEMISTS • ASSAYERS • CONSULTANTS  
ESTABLISHED 1928



# SWASTIKA LABORATORIES

(A DIVISION OF ASSAYERS CORPORATION LIMITED)

POK 170

P.O. BOX 10, SWASTIKA, ONTARIO

TELEPHONE: (705) 642-3244

FAX (705) 642-3300

Mr. C. Forbes

70 McCamus Ave

Kirkland Lake, Ontario

P2N 2J9

1.5% LATE CHARGE OVER 30 DAYS (ANNUAL RATE 18%)

QTY	DESCRIPTION	UNIT PRICE	TOTAL
25	Au assays	\$ 8.75	\$ 218.75
25	Sample Handling Cert. #0W-1465-RAI Oct. 2, 1990	3.00	75.00
9	Au assays	8.75	78.75
9	Sample Handling Cert. #0W-1471-RAI Oct. 2, 1990	3.00	27.00
		...TITINA LABORATORIES	
		NOV 8/90	
		PER [Signature]	
		TOTAL... \$ 399.50	

FACTURE/INVOICE ANALYTICAL CHEMISTS • ASSAYERS • CONSULTANTS ESTABLISHED 1928





Established 1928

# Swastika Laboratories

A Division of Assayers Corporation Ltd.

Assaying - Consulting - Representation

Page 2 of 2

0W-1572-RA1

## Assay Certificate

Company: **CARL FORBES**

Project:

Attn:

Date: **OCT-18-90**

Copy 1. 70 MCCAMUS, KIRKLAND LAKE P2N 2J9

We hereby certify the following Assay of 36 ROCK samples submitted OCT-15-90 by .

Sample Number	Au oz/ton	Au check oz/ton	Au 2nd oz/ton	
121914	0.100 <sup>*E</sup>	- 2.5'	QTZ. VEIN + SHEARED WALLROCK	- UP TO 5% PY
121915	0.076 <sup>*E</sup>	- 2.5'	" " " "	- SOME PY
121916	0.122	0.106 <sup>*E</sup>	- 2.5' QTZ. VEIN + SHEARED WALLROCK	- SOME PY
121917	0.078 <sup>*E</sup>	- 3'	QTZ. VEIN + SHEARED WALLROCK	- SOME PY
121918	0.180 <sup>*E</sup>	- 3.5'	" " " "	" "
121919	2.288	2.300	2.357 <sup>*E</sup>	- 4' QTZ. VEIN + SHEARED WALLROCK SOME PY

Certified by \_\_\_\_\_

G. Lebel / Manager



Established 1928

# Swastika Laboratories

A Division of Assayers Corporation Ltd.

Assaying - Consulting - Representation

Page 1 of 2

OW-1572-RA1

## Assay Certificate

Company: **CARL FORBES**

Project:

Area:

Date: **OCT-18-90**

Copy 1. 70 MCCAMUS, KIRKLAND LAKE P2N 2J9

We hereby certify the following Assay of 36 ROCK samples submitted OCT-15-90 by .

Sample Number	Au oz/ton	Au check oz/ton	Au 2nd oz/ton	
121920	0.052	0.046 <sup>E</sup>		4" QTZ. VEIN & SHEARED WALL ROCK - SOME PY
121885	0.002 <sup>D</sup>			3" QTZ. VEIN - SPARSE PY
121886	0.004 <sup>D</sup>			6" MIN. WALL ROCK - UP TO 5% PY
121887	0.010 <sup>D</sup>			2.5" QTZ. VEIN - A LITTLE PY
121888	0.002 <sup>D</sup>			4" QTZ. VEIN - 3% PY
121889	0.002 <sup>D</sup>			GRAB OF QTZ. VEIN - 3% PY
121890	0.012	0.016 <sup>D</sup>		24" ALT. WALL ROCK - UP TO 7% PY
121891	0.016 <sup>D</sup>			12" QTZ. VEIN - RARE PY
121892	0.008 <sup>D</sup>			24" QTZ. VEIN - 3% PY
121893	0.002 <sup>D</sup>			3" QTZ. VEIN - RARE PY
121894	0.004 <sup>D</sup>			24" ALT. WALL ROCK - UP TO 4% PY
121895	0.002 <sup>D</sup>			2.5" QTZ. VEIN - SPARSE PY
121896	0.092 <sup>D</sup>			3" QTZ. VEIN - UP TO 4% PY
121897	0.354	0.320 <sup>D</sup>		5" QTZ. VEIN - NO PY - SPHALERITE? - BRECCIATED
121898	0.030 <sup>D</sup>			12" QTZ. VEIN - A LITTLE PY
121899	0.002 <sup>D</sup>			2.5" ALT. WALL ROCK - UP TO 5% PY
121900	0.242	0.210 <sup>D</sup>		8" QTZ. VEIN - A LITTLE PY - RARE CP
121901	0.006 <sup>D</sup>			12" WALL ROCK - SPARSE PY
121902	0.006 <sup>D</sup>			12" WALL ROCK - UP TO 3% PY
121903	0.004 <sup>D</sup>			4" QTZ. VEIN - A LITTLE PY
121904	0.010 <sup>D</sup>			3" WALL ROCK - UP TO 3% PY
121905	0.002 <sup>D</sup>			12" QTZ. VEIN - RARE PY
121906	0.006 <sup>D</sup>			12" QTZ. VEIN - A LITTLE PY
121907	0.008 <sup>D</sup>			3" QTZ. VEIN - UP TO 5% PY
121908	0.002 <sup>D</sup>			18" QTZ. VEIN & WALL ROCK - RARE PY
121909	0.004 <sup>D</sup>			12" QTZ. VEIN - A LITTLE PY
121910	0.044	0.040 <sup>E</sup>		12" QTZ. VEIN & WALL ROCK - SOME PY
121911	0.026 <sup>E</sup>			3" QTZ. VEIN & SHEARED WALL ROCK - SOME PY
121912	0.008 <sup>E</sup>			3" " " " " " "
121913	0.028 <sup>E</sup>			2" " " " " " "

Certified by   
G. Lebel / Manager



Established 1928

# Swastika Laboratories

A Division of Assayers Corporation Ltd.

Assaying - Consulting - Representation

## Assay Certificate

0W-1471-RA1

Company: **CARL FORBES**

Date: **OCT-12-90**

Project:

Copy 1. 70 MCCAMUS, KIRKLAND LAKE P2N 2J9

Attn:

We hereby certify the following Assay of 9 ROCK samples submitted SEP-28-90 by CARL FORBES.

Sample Number	An oz/ton	An check oz/ton	
121876	0.008	0.008	"C" - GRAB OF QZ. VEIN - UP TO 5% PY
121877	0.002		"C" - 3' QZ. VEIN - UP TO 8% FINE PY
121878	0.005		"C" - 2' QZ. VEIN - SPARSE PY
121879	0.002		"C" - 18" MIN. WALL ROCK - UP TO 5% DISS. PY
121880	0.002		"C" - 12" QZ. VEIN - RARE PY
121881	0.002		"C" - 24" SIL. MATERIAL 4 VEIN QZ. - RARE PY
121882	0.005	0.005	"C" - 12" SHEARED MATERIAL - RARE PY
121883	0.002		"C" - 18" SIL. MATERIAL 4 VEIN QZ. - A LITTLE FINE PY
121884	0.012		GRAB - "P" STRIPPING BEFORE IT WAS STRIPPED

Certified by

  
G. Lebel / Manager

P.O. Box 10, Swastika, Ontario P0K 1T0

Telephone (705) 642-3244

FAX (705) 642-3300



Established 1928

# Swastika Laboratories

A Division of Assayers Corporation Ltd.

Assaying - Consulting - Representation

## Assay Certificate

0W-1465-RA1

Company: **CARL FORBES**

Date: **OCT-02-90**

Project:

Copy 1. 70 MCCAMUS, KIRKLAND LAKE P2N 2J9

Attn:

We hereby certify the following Assay of 25 ROCK samples submitted SEP-27-90 by CARL FORBES.

Sample Number	Au oz/ton	Au Check oz/ton	Description
121851	0.164	A"	6" QTZ. VEIN - 5% PY
121852	Nil	A"	8" WALLROCK - TR. PY
121853	0.830	0.772	A" - 12" QTZ. VEIN - UP TO 20% PY
121854	0.002	A"	24" UNALTERED WALLROCK - NO PY
121855	0.862	0.820	A" - 24" SIL. ALTERED WALLROCK - UP TO 25% PY
121856	0.070	A"	16" QTZ. VEIN - UP TO 25% PY IN LARGE CUBES
121857	0.704	0.700	A" - 24" SIL. WALLROCK - A LITTLE QTZ. + PY
121858	0.044	A"	12" QTZ. VEIN - UP TO 10% PY
121859	0.058	A"	16" QTZ. VEIN - UP TO 15% FINE PY
121860	0.002	A"	6" ALT. WALLROCK - 2% PY
121861	0.130	A"	12" QTZ. VEIN - 5% PY
121862	Nil	A"	8" WALLROCK - SLIGHT EPIDOTE, SIL., PY
121863	0.009	A"	12" QTZ. VEIN - 3% PY
121864	0.002	A"	5" UNALTERED WALLROCK - RARE PY
121865	0.003	A"	12" QTZ. VEIN - 8% FINE PY
121866	0.002	A"	4" WALLROCK - RARE PY
121867	0.003	A"	GRAB - QTZ. VEIN - RARE PY
121868	0.116	0.118	B" - 16" QTZ. VEIN - 15% PY
121869	0.002	B"	3.5' ALTERED WALLROCK, 6" QTZ. LEAD, SOME PY, A LITTLE MO
121870	0.007	B"	GRAB OF QTZ. LEAD - 5% PY
121871	0.077	0.082	B" - GRAB OF QTZ. VEIN - 10% PY - FAIR MO
121872	0.022	B"	24" QTZ. VEIN - 10% PY - A LITTLE MO
121873	0.019	B"	18" ALTERED SHEAR - 3% DISS. PY
121874	0.016	B"	3' ALTERED SHEAR - UP TO 7% PY
121875	0.010	GRAB	QTZ. VEIN ON ROAD ON CLAIM L-802748 - 10% COARSE PY

Certified by

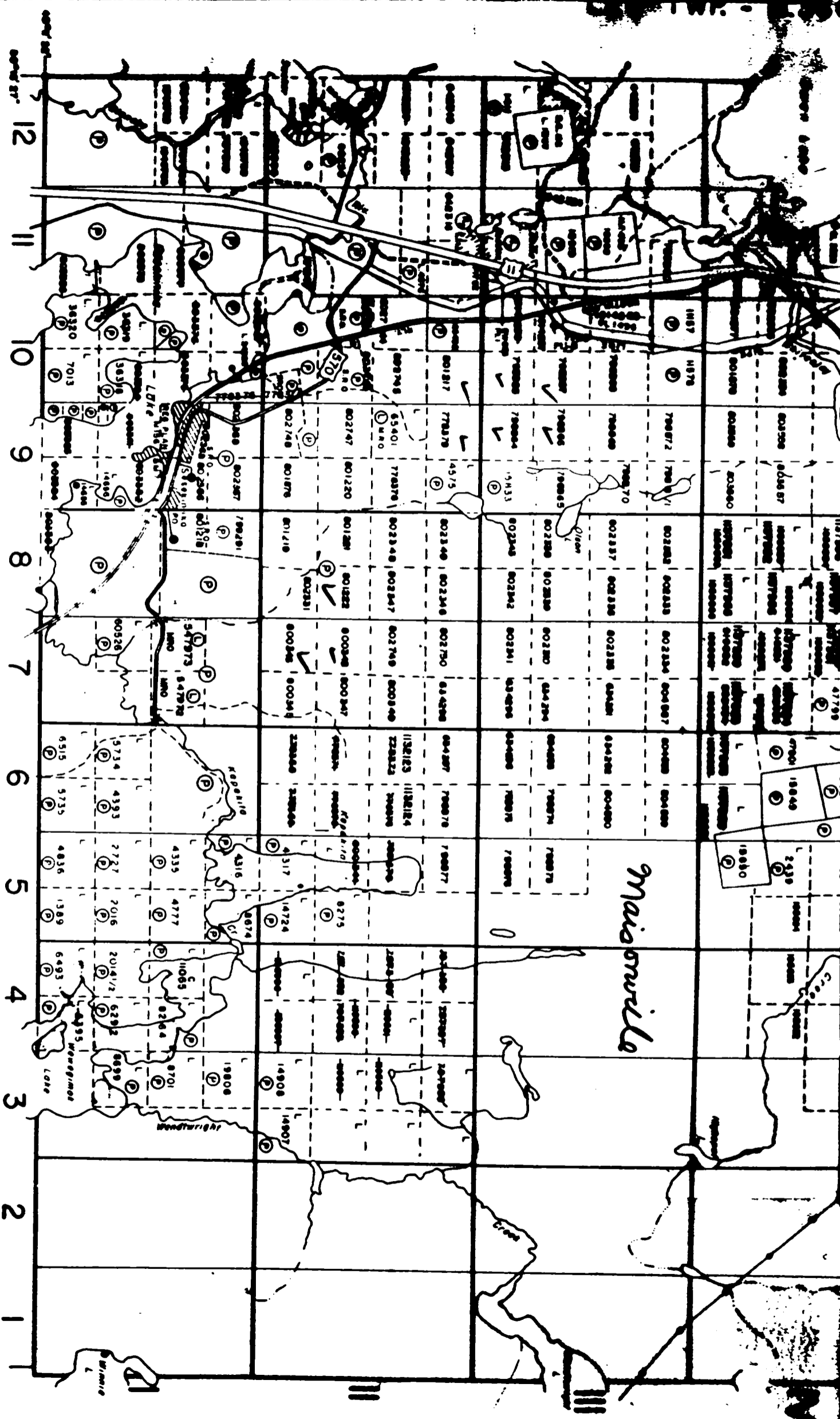
G. Lebel / Manager

P.O. Box 10, Swastika, Ontario P0K 1T0

Telephone (705) 642-3244

FAX (705) 642-3300





GRENFELL TWP - M.351

NOTICE OF FORESTRY ACT



Ministry of Northern Development and Mines

W9008/652

DOCUP W90

2.1



42A01NE0033 2.13780 MAISONVILLE

DECE TAXI 4

Mining Act (Geophysical, Geological and Ge

900

nes  
rm.  
1 to  
1:

Type of Survey(s) <b>GEOLOGICAL - MAPPING &amp; SAMPLING</b>	Mining Division <b>LARGER LAKE</b>	Township or Area <b>MAISONVILLE TOWNSHIP</b>
Recorded Holder(s) <b>PREMIER EXPLORATIONS INC.</b>	Prospector's Licence No. <b>T1762</b>	
Address <b>70 McCANUS AVE. KIRKLAND LAKE ONT. P2N 2J9</b>		Telephone No. <b>705-567-5145</b>
Survey Company <b>CARL P. FORBES</b>		
Name and Address of Author (of Geo-Technical Report) <b>CARL P. FORBES 70 McCANUS AVE. KIRKLAND LAKE ONT. P2N 2J9</b>		Date of Survey (from & to) 28 09 90 04 11 90 Day Mo Yr Day Mo Yr

Credits Requested per Each Claim in Columns at right

Mining Claims Traversed (List in numerical sequence)

Special Provisions	Geophysical	Days per Claim
For first survey: Enter 40 days. (This includes line cutting)	- Electromagnetic - Magnetometer	
For each additional survey using the same grid: Enter 20 days (for each)	- Other Geological Geochemical	
Man Days Complete reverse side and enter total(s) here	Geophysical - Electromagnetic - Magnetometer - Other Geological Geochemical	15.75
Airborne Credits Note: Special provisions credits do not apply to Airborne Surveys.	Electromagnetic Magnetometer Other	
Total miles flown over claim(s).		
Date Nov 5 1990	Recorded Holder or Agent (Signature) Carl P. Forbes	

Mining Claim		Mining Claim		Mining Claim	
Prefix	Number	Prefix	Number	Prefix	Number
L	800346				
L	801222				
L	800348				
L	778379				
RECEIVED DEC 03 1990 MINING LANDS SECTION					
Total number of mining claims covered by this report of work.					4

Certification Verifying Report of Work

I hereby certify that I have a personal and intimate knowledge of the facts set forth in this Report of Work, having performed the work or witnessed same during and/or after its completion and annexed report is true.

Name and Address of Person Certifying

CARL P. FORBES 70 McCANUS AVE. KIRKLAND LAKE ONT. P2N 2J9

Telephone No

Date

Certified By (Signature)

705-567-5145

NOV. 5 1990

Carl P. Forbes

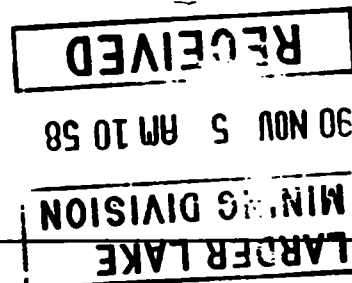
Received Stamp

For Office Use Only

Total Days Cr Recorded 63	Date Recorded Nov 5/90	Mining Recorder [Signature]
	Date Approved as Recorded Feb 19, 1991	Principal Manager, Mining Lands [Signature]

1362 (89/06)

M. - 327 back too



### Assessment Work Breakdown

Man Days are based on eight (8) hour Technical or Line-cutting days. Technical days include work performed by consultants, draftsmen, etc..

Type of Survey												
Technical Days	X	7	=	Technical Days Credits	+	Line-cutting Days	=	Total Credits	+	No. of Claims	=	Days per Claim
9				63				63		4		15.75

Type of Survey												
Technical Days	X	7	=	Technical Days Credits	+	Line-cutting Days	=	Total Credits	+	No. of Claims	=	Days per Claim

Type of Survey												
Technical Days	X	7	=	Technical Days Credits	+	Line-cutting Days	=	Total Credits	+	No. of Claims	=	Days per Claim

Type of Survey												
Technical Days	X	7	=	Technical Days Credits	+	Line-cutting Days	=	Total Credits	+	No. of Claims	=	Days per Claim

# FORESTRY OPERATIONS

BENOIT TWP. - M.326

JAN 15 1991  
LARDER LAKE  
MINING RECORDER'S OFFICE

THE TOWNSHIP  
OF  
**MAISONVILLE**

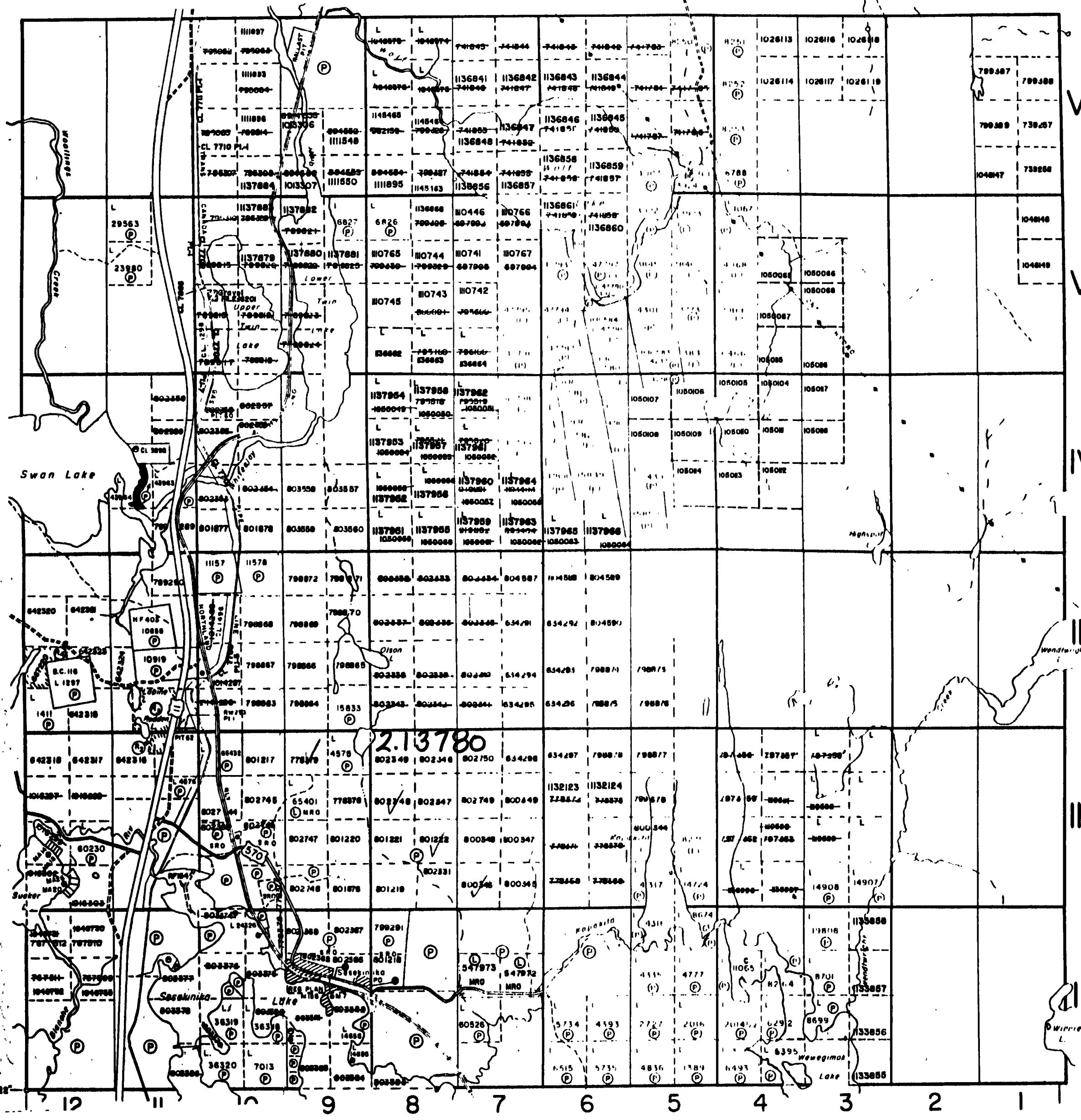
DISTRICT OF  
TIMISKAMING

LARDER LAKE  
MINING DIVISION

SCALE: 1-INCH 40 CHAINS

LEE TWP. - M.360

BERNHARDT TWP. - M.327



### LEGEND

- PATENTED LAND ● or (P)
- CROWN LAND SALE ○ (S)
- LEASES ○ (L)
- LOCATED LAND ○ (L)
- LICENSE OF OCCUPATION ○ (L.O.)
- MINING RIGHTS ONLY ○ (M.R.O.)
- SURFACE RIGHTS ONLY ○ (S.R.O.)
- ROADS ———
- IMPROVED ROADS ———
- KING'S HIGHWAYS ———
- RAILWAYS ———
- POWER LINES ———
- MARSH OR MUSKEG ———
- MINES ———
- CANCELLED ○ (C)
- PATENTED SRO ○ (P)

### NOTES

- 400' surface rights reservation along the shores of all lakes and rivers.
- Areas withdrawn from staking
- WITHDRAWN FROM STAKING, SECTION 31-1
- PENDING APPLICATION UNDER PUBLIC LANDS ACT
- ALL ISLANDS IN SESEKINKA LAKE ARE WITHDRAWN FROM STAKING BY ORDER-IN-COUNCIL DATED DEC. 7, 1921
- (R2) SURFACE RIGHTS WITHDRAWN FROM STAKING, SEC. 43/70 NOV. 8, 1970, FILE 22032
- (R3) SURFACE RIGHTS WITHDRAWN FROM STAKING, SEC. 43/70 N.R.W. 5/81 JAN. 23, 1981, FILE 22032
- (R4) SURFACE AND MINING RIGHTS WITHDRAWN FROM STAKING SEC. 36/80, W. 8/86, JAN. 20, 1986

DATE RECEIVED JAN 20/89

PLAN NO. G-3669



200

GRENFELL TWP. - M.351

NOTICE OF FORESTRY ACTIVITY  
THIS TOWNSHIP / AREA FALLS WITHIN THE  
TIMISKAMING MANAGEMENT UNIT

MINISTRY OF NORTHERN  
DEVELOPMENT AND MINES