



42A01NE0062 14 MAISONVILLE

010

# Diamond Drilling

Township of Maisonville

Report No: 14

Work performed by: Imperial Oil Enterprises Ltd.

Claim No	Hole No	Footage	Date	Note
L. 319508	1	350'	Oct/72	(1)
L. 319507	2	106'	Oct/72	(1)
	2A	340'	Oct/72	(1)

*abandoned to  
21*

## Notes:

(1) Mineral Exploration Assistance Program (Contract KL-14)



020

REPORT ON DIAMOND DRILLING

IN

MAISONVILLE AND COOK TWPS.

LARDER LAKE MINING DIVISION

ONTARIO

for

Imperial Oil Enterprises Ltd.

By: N.W. Baker  
P.Eng.  
February 26, 1973

## INTRODUCTION

Between September and December of 1972, Continental Diamond Limited drilled five holes totalling 1587 feet for Imperial Oil Enterprises Ltd., in Maisonville and Cook Townships some 30 miles north of Kirkland Lake, Ontario.

The drill holes were spotted to test ground Turam and Electromagnetic conductors recorded by Geosearch Consultants Ltd. All holes were spotted on established grid lines.

Two holes were discontinued because of difficulty encountered while attempting to penetrate overburden. The remaining three holes encountered sections of graphitic tuff with minor ~~pyrite~~ <sup>pyrite</sup> pepite. No economic sulphides were encountered in the drilling.

It is felt that the conductors were adequately tested and explained and no further drilling is warranted at this time.

Diamond Drilling

Maisonville Township - Grid 1

(Figure 1)

Three holes totalling 804 feet were drilled to test two separate ground horizontal loop electromagnetic conductors.

Wide sections of graphitic tuff were encountered in two drill holes. No economic sulphides were intersected. One hole was discontinued at 106 feet because of difficulty encountered while penetrating overburden.

No further drilling is recommended on this group of claims.

Cook Township - Grids 9 and 10

Grid 9: (Figure 2)

One hole was attempted and discontinued at a depth of 335 feet in overburden. Due to the great depth of overburden encountered on this grid and the expenses incurred it was decided to suspend drilling on this grid. Further drilling is not planned for the immediate future.

Grid 10: (Figure 3)

One hole totalling 448 feet was drilled to test a Turam conductor. Narrow sections of graphitic tuff were intersected. No further drilling is recommended on this group of claims.

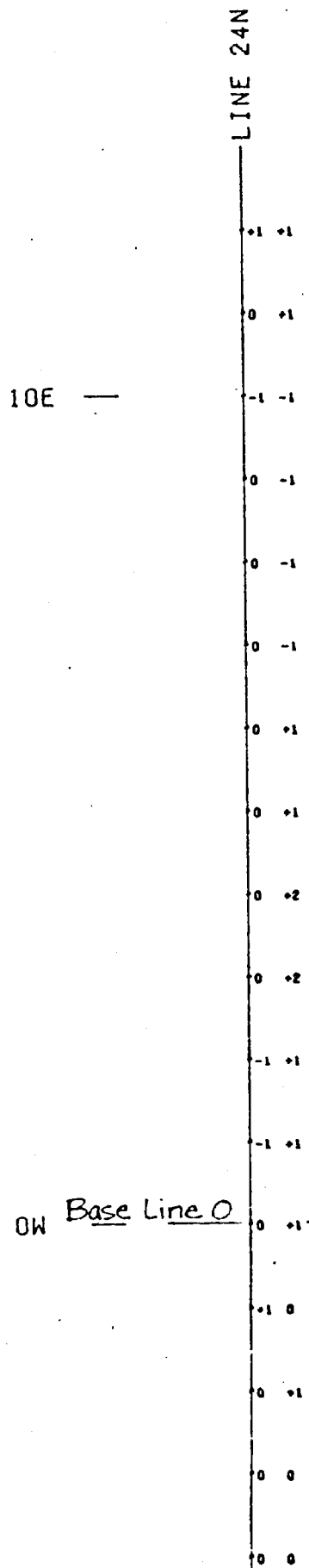
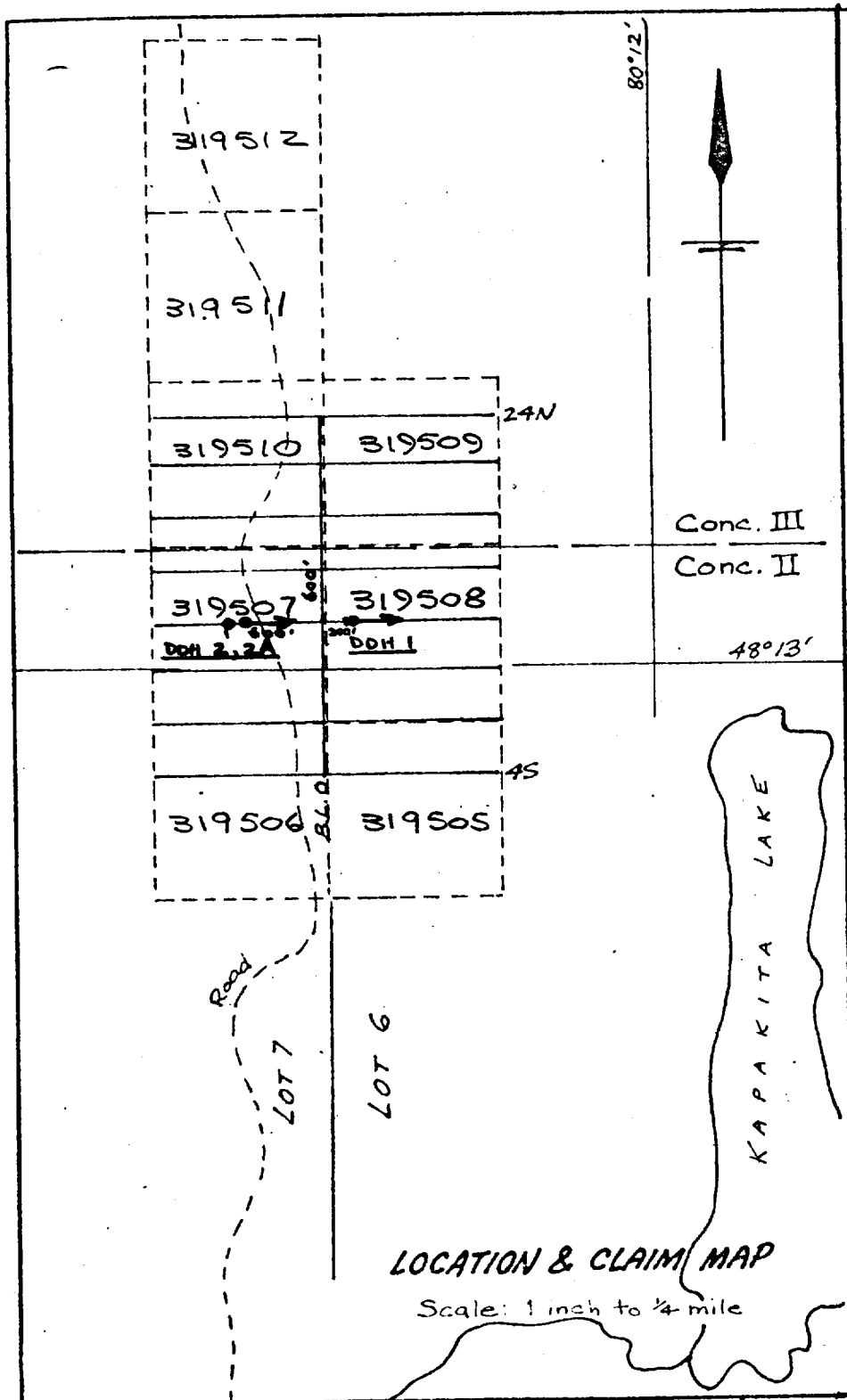
Conclusions

Except for the hole lost in Cook Township - Grid 9, the ground Turam and Electromagnetic conductors were explained. No economic sulphides were intersected in the drilling.

For the immediate future, no further drilling is planned.



Nelson W. Baker  
P. Eng.



GRID I

FIGURE I

OW Base Line 0

IMPERIAL OIL LIMITED - DIAMOND DRILL HOLE LOG

PROPERTY . . . . . Kirkland Lake . . . . . LOCATION . . . . . Maisonsville Township . . . . .  
 NTS CODE . . . . . 42A . . . . . HOLE NO. . . . . 1 . . . . .

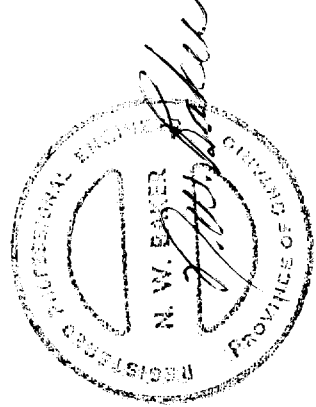
LATITUDE . . . . . AZIMUTH . . . . . 90° . . . . . PURPOSE . . . . . Test Conductor  
 DEPARTURE . . . . . DIP . . . . . - 50° . . . . . STARTED . . . . . Oct. 17, 1972  
 ELEVATION . . . . . CORE . . . . . AQ . . . . . COMPLETED Oct. 25, 1972

SECTION . . . . . L8N, 2 + 00E . . . . . LOGGED BY . . . . . N. W. Baker

REF. GRID . . . . . Grid 1 . . . . . Drilled By: Continental Diamond Drilling

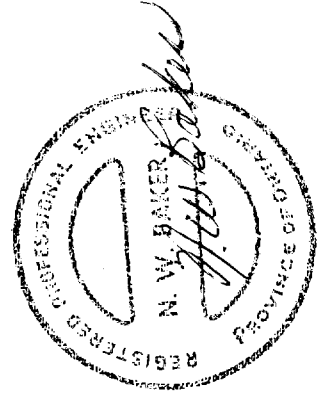
DIP TESTS

TEST	FOOTAGE		DIP	CORR.	LATITUDE		DEPARTURE	
	FROM	TO			TOTAL	CUM.	CUM.	CUM.
1	@ 175'			47°				
2	@ 300'			43½°				



CORE SAMPLES

FOOTAGE		DESCRIPTION	CORE SAMPLES				AVERAGES
FROM	TO		NO.	FROM	TO	WIDTH	
0	48	Casing in overburden					
48	50	Medium Grained, dark green andesite					
50	65	Light grey, fine grained rhyolite tuff disseminated with 1% fine pyrite foliation 45° to C.A.					
65	89	Graphitic tuff displaying definite banding with foliation 45° to C.A.					
89	100	Interlayered rhyolite and graphitic tuff					
100	117	Graphitic Tuff					
117	158.5	Rhyolite tuff, light grey, fine grained					
158.5	175	Graphitic tuff, banded with minor pyrite					
175	180	Rhyolite tuff					
180	248	Graphitic tuff. Foliation 40° to C.A. Pyrite seams frequent.					
248	255	Rhyolite tuff					
255	358	Graphitic tuff					
	350	End of Hole					





IMPERIAL OIL LIMITED - DIAMOND DRILL HOLE LOG

PROPERTY . . . . . Kirkland Lake . . . . . LOCATION . . . . . Maissonville Township . . . . .  
 NTS CODE . . . . . 42A . . . . . HOLE NO. . . . . 2 . . . . .

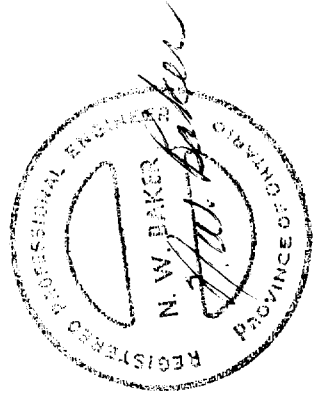
LATITUDE . . . . . AZIMUTH . . . . . 90° . . . . . PURPOSE . . . . . Test Conductor  
 DEPARTURE . . . . . DIP . . . . . - 50° . . . . . STARTED . . . . . Oct. 26, 1972  
 ELEVATION . . . . . CORE . . . . . AQ . . . . . COMPLETED . . . . . Oct. 28, 1972

SECTION . . . . . L8N, 6 + 00W . . . . . LOGGED BY . . . . . N.W. Baker

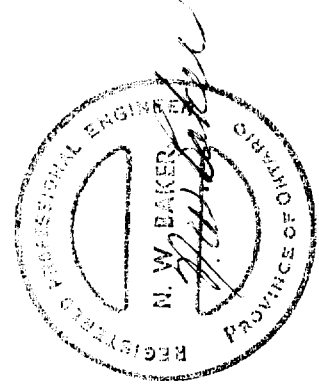
REF. GRID . . . . . Grid 1 . . . . .

DIP TESTS

TEST	FOOTAGE		TOTAL	DIP		LATITUDE		DEPARTURE	
	FROM	TO		CORR.		CUM.		CUM.	



FOOTAGE		DESCRIPTION	CORE SAMPLES				AVERAGES
FROM	TO		NO.	FROM	TO	WIDTH	
0	106	Overburden - Boulders, sand, and gravel Lost hole at 106' when casing broke off					
	106	End of hole					



IMPERIAL OIL LIMITED - DIAMOND DRILL HOLE LOG

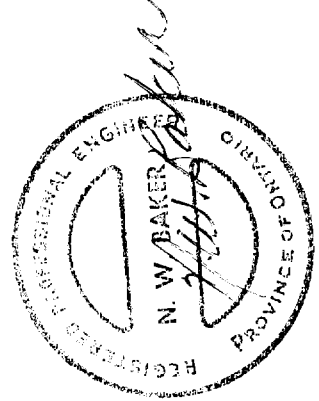
PROPERTY ..... Kirkland Lake ..... LOCATION ..... Maissonville Township .....  
 NTS CODE ..... 42A ..... HOLE NO. .... 2A .....

LATITUDE ..... AZIMUTH ..... 90° ..... PURPOSE ..... Test Conductor .....  
 DEPARTURE ..... DIP ..... - 50° ..... STARTED ..... Oct. 30, 1972 .....  
 ELEVATION ..... CORE ..... A0 ..... COMPLETED ..... Nov. 9, 1972 .....  
 SECTION ..... L8N, 6+10W ..... LOGGED BY ..... N. W. Baker .....

REF. GRID ..... Grid 1 .....

DIP TESTS

TEST	FOOTAGE		DIP		LATITUDE		DEPARTURE	
	FROM	TO	TOTAL	CORR.	CUM.	CUM.	CUM.	



FOOTAGE		DESCRIPTION	CORE SAMPLES				AVERAGES
FROM	TO		NO.	FROM	TO	WIDTH	
0	109	Casing in overburden					
109	113	Graphitic tuff with fine pyrite coated on fractures, foliation 30° to C.A. - slight chlorite on fractures					
113	114	Calcite vein - Narrow stringer or fine sphalerite					
114	134	Graphitic tuff					
134	150	Rhyolite tuff, light green, fine grained 1% fine pyrite disseminated throughout. Foliation 45° to C.A.					
150	340	Graphitic tuff. Foliation 30° to C.A. Narrow interbanded rhyolite at 162'.					
	340	End of hole					

