

DIAMOND DRI



42A01NE0092 24 LABEL

010

TOWNSHIP: Lebel

REPORT No.: 24

WORK PERFORMED BY: Frank O'Connor

<u>CLAIM No.</u>	<u>HOLE No.</u>	<u>FOOTAGE</u>	<u>DATE</u>	<u>NOTE</u>
L 532870	L 81 - 1	165.0	July/81	(1)

NOTES: (1) #367-81

Location of hole in relation to a fixed point on the claim: 266' S & 40'E of No. 4 post

# DIAMOND DRILL RECORD

Hole No. L81-1 Sheet No. 1

Owner, Optionee or  
Exploration Co: Frank O'Connor

Property Frank O'Connor

Location Level Tp.

Latitude.....

Departure.....

Bearing.....

Dip

Total Footage.....

Claim No. L532870

Elev. Collar.....

Datum.....

Date Started 1981.07.06

Date Completed 1981.07.10

Drilled by.....

Logged by.....

Drilling Co. - Pat Harrington

Footage		Formation	Sample Number	Sample Footage	Sample Width	Gold Sample	Gold Sludge	Remarks
From	To							
0	6	Casing						
6	22	Timiskaming conglomerate containing numerous coarse (less than 8 cm) white calc-alkalic rhyolite) pebbles (as well pale green basalt pebbles, typically smaller than the white rhyolite.)						
22	28	Largest sized pebbles are grey quartz feldspar porphyry (feldspar phenocrysts are whiter than the matrix).						
28	32	Recrystallized mafic minerals in wallrocks of aplite dike containing cross cutting qv in tensional fractures perpendicular to dike walls						
32	51	as for 22 to 28'						
51	64	Sharpstone, finer pebble conglomerate having many pebbles that are angular. This must be basal grit						
64	112	Fine grained greenstone Mg basalt, probably Kinojevis Group tholeiite Pillow						
112		Below Salvage						

Date of Examination.....

# DIAMOND DRILL RECORD

Hole No. L81-1      Sheet No. 2

Property Frank O'Connor  
 Location Lebel Tp.  
 \_\_\_\_\_  
 \_\_\_\_\_  
 Latitude \_\_\_\_\_  
 Departure \_\_\_\_\_  
 Bearing \_\_\_\_\_

Dip

|

\_\_\_\_\_

\_\_\_\_\_

\_\_\_\_\_

\_\_\_\_\_

\_\_\_\_\_

\_\_\_\_\_

\_\_\_\_\_

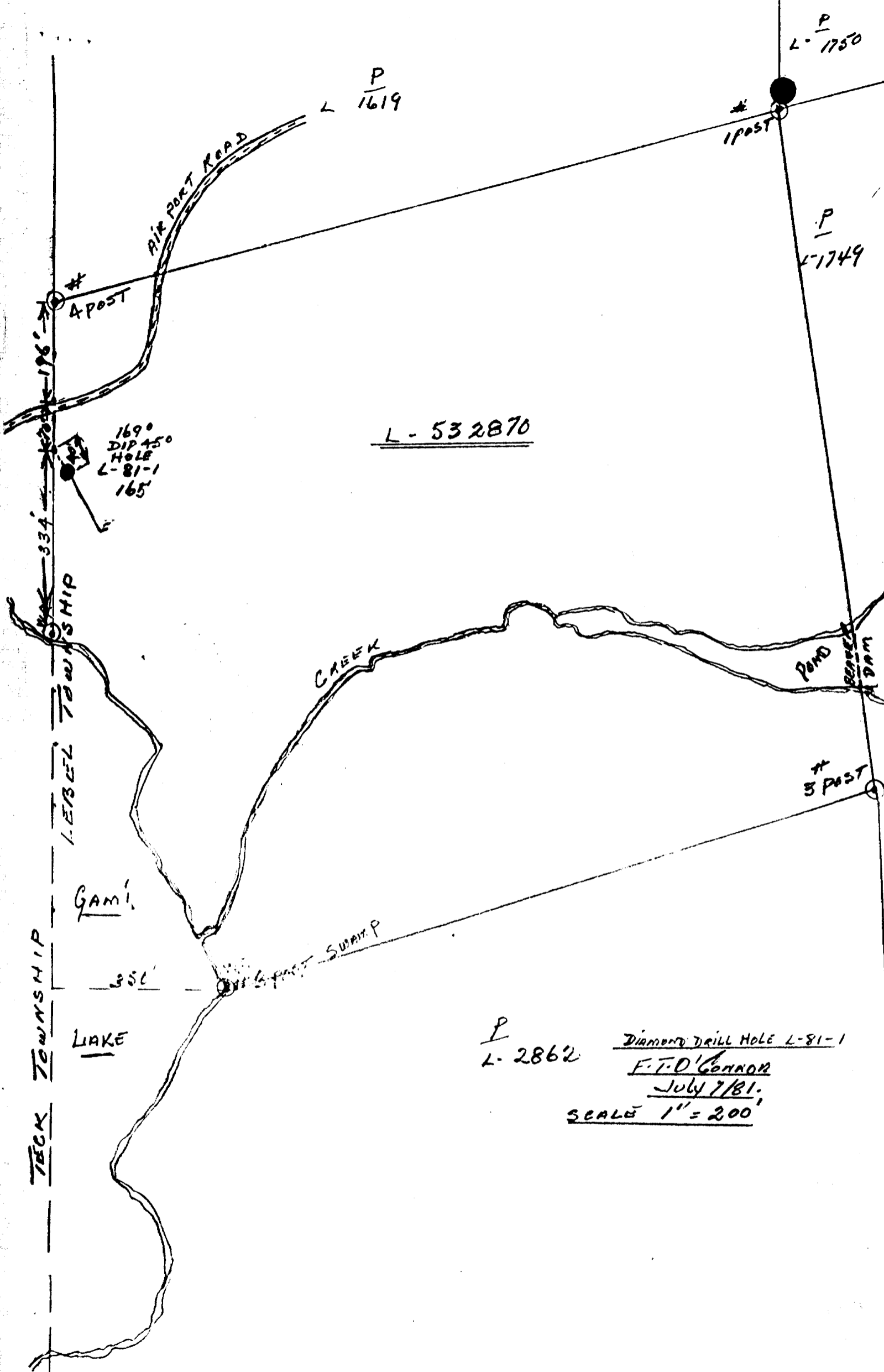
\_\_\_\_\_

Total Footage \_\_\_\_\_

Elev. Collar \_\_\_\_\_  
 Datum \_\_\_\_\_  
 Date Started \_\_\_\_\_  
 Date Completed \_\_\_\_\_  
 Drilled by \_\_\_\_\_  
 Logged by \_\_\_\_\_

Footage		Formation	Sample Number	Sample Footage	Sample Width	Gold Sample	Gold Sludge	Remarks
From	To							
112	121	Fine-grained Mg basalt as above						
121	126	Medium grained basalt containing white lath feldspar grains about averaging 2 to 3 mm						
126	159	Fine grained paler greyish green with pillow selvages at 128 to 161½'						
159	165	White carbonate-quartz veined rock with pale bleached wallrocks containing carbonate mineral. Vein contacts "colloform", and bleached wallrocks contact with unaltered wallrocks is jagged (mafic grains projecting into the bleached carbonatized wallrocks).						

Date of Examination \_\_\_\_\_



P  
L-1750

P  
L-1619

# 1 POST

P  
L-1749

L-532870

1690  
DIP 450  
HOLE  
L-81-1  
165'

POND  
DAM

# 5 POST

TECK TOWNSHIP

LEIBEL TOWNSHIP

GAMI

LAKE

SWAMP

P  
L-2862

DIAMOND DRILL HOLE L-81-1

F.T.O'CONNOR

JULY 7/81

SCALE 1" = 200'

#367-81

Morrisse

Lebel Twp M359

Teck Tp. (M.392)

