



42A01NE0207 27 TECK

010

Diamond Drilling

Township of TECK

Report No 27

Work performed by: Spark Gold Mines Limited

| Claim No | Hole No | Footage | Date    | Note |
|----------|---------|---------|---------|------|
| L 342857 | 77-1    | 303     | Sept/77 | (1)  |

Notes:

(1) #218-77



Start a new page for every new hole, but fill in top portion of form only on first page for each hole.

FILL IN ON EVERY PAGE

HOLE NO. 77-1 PAGE NO. 1

|  |                                  |                               |  |                             |                                      |   |  |  |
|--|----------------------------------|-------------------------------|--|-----------------------------|--------------------------------------|---|--|--|
| DRILLING COMPANY<br><b>FERGUSON MINING<br/>MATACHEWAN MINING</b>   |                                  | COLLAR ELEVATION              | BEARING OF HOLE FROM TRUE NORTH<br><b>0</b>  | TOTAL FOOTAGE<br><b>303</b> | DIP OF HOLE AT<br>collar   <b>45</b> | LOCATION OF HOLE IN RELATION TO A FIXED POINT ON THE CLAIM<br><b>600 FT W OF E<br/>BOUNDARY OF<br/>CLAIM NO 342857<br/>30' S OF ROAD<br/>CROSSING CLAIM</b> | MAP REFERENCE NO.  | CLAIM NO.<br><b>342857</b>                 |
| DATE HOLE STARTED<br><b>17/9/77</b>                                | DATE COMPLETED<br><b>22/9/77</b> | DATE LOGGED<br><b>24/9/77</b> | LOGGED BY<br><b>T.A. HILL</b>                |                             | ft                                   |   | LOCATION (Tp., Lot, Con. OR Lat. and Long.)<br><br><b>TECK</b> | PRECISE NAME<br><b>SIZE OF CORE 1 3/8"</b> |
| EXPLORATION CO., OWNER OR OPTIONEE<br><b>SPARK GOLD MINES LTD.</b> |                                  | DATE SUBMITTED                | SUBMITTED BY (Signature)<br><b>T.A. Hill</b> |                             | ft                                   |   |  |  |
|  |                                  |                               |  |                             | ft                                   |   |  |  |

| FOOTAGE |        | ROCK TYPE   | DESCRIPTION<br>Colour, grain size, texture, minerals, alteration, etc.                 | PLANAR FEATURE ANGLE * | CORE SPECIMEN FOOTAGE + | YOUR SAMPLE NUMBER | SAMPLE FOOTAGE |         | SAMPLE LENGTH | ASSAYS + |                |
|---------|--------|-------------|--|------------------------|-------------------------|--------------------|----------------|---------|---------------|----------|----------------|
| FROM    | TO     |             |  |                        |                         |                    | FROM           | TO      |               | AU       | PURPOSE        |
| 0       | 8      | CASING      |  |                        |                         |                    |                |         |               |          |                |
| 8       | 9      | CASING SET  |  |                        |                         |                    |                |         |               |          |                |
| 9       | 32 1/2 | GREY WACKE  |  |                        |                         |                    |                |         |               |          |                |
| 32 1/2  | 225    | SEDIMENTS   | interbanded - very sparse qtz - stringers  |                        |                         | 1                  | 116 1/2        | 117 1/2 | 1 ft          |          | qtz stringer   |
|         |        | TRACHYTES   |  |                        |                         | 2                  | 179            | 180     | 1 ft          |          | asbestos       |
| 225     | 314    | SEDIMENTS   | Moderate qtz - coarse stringers @ 3"-4"<br>to 100 - occasional pyrite and<br>dolomite. |                        |                         | 3                  | 235            | 236     | 1 ft          |          | qtz calcite st |
|         |        |             |  |                        |                         | 4                  | 239            | 240     | 1 ft          |          | qtz calcite st |
|         |        |             |  |                        |                         | 5                  | 292 1/2        | 293 1/2 | 1 ft          |          | qtz calcite st |
| 264     | 363    | SPENITE     | minor amount qtz - white stringers   |                        |                         | 6                  | 300            | 301     | 1 ft          |          | qtz in rock    |
| 303     |        | END OF HOLE |  |                        |                         | 7                  | 302            | 303     | 1 ft          |          | qtz in rock    |

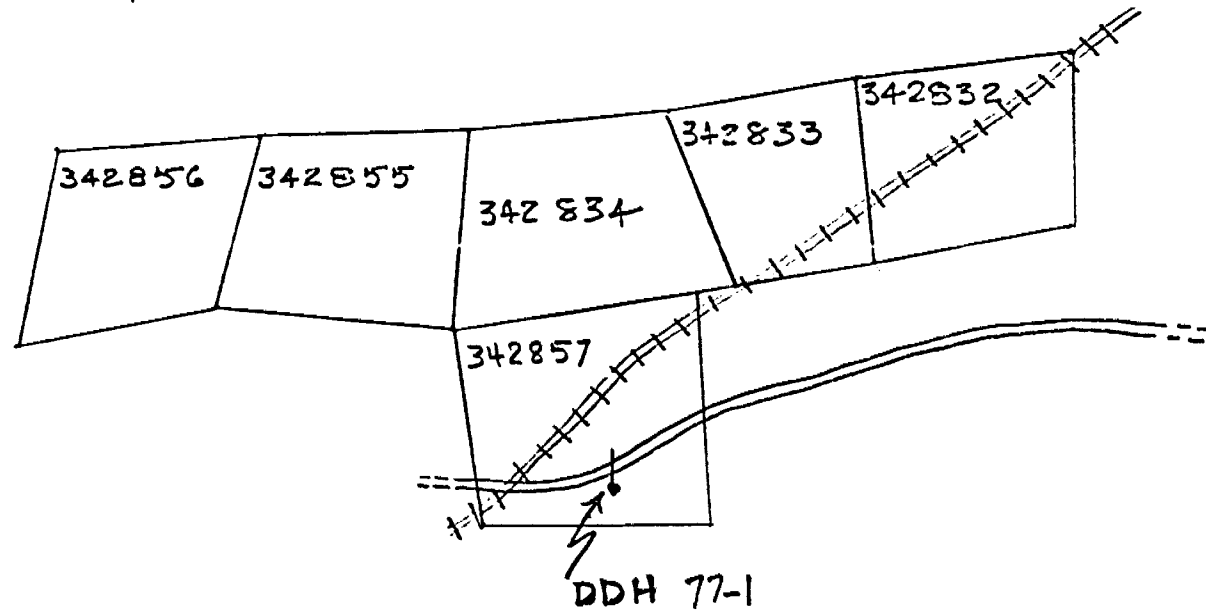
\* For features such as foliation, bedding, schistosity, measured from the long axis of the core.

+ Additional credit available. See Assessment Work Regulations.



TECK TWP

#218-77



SPARK GOLD MINES LTD  
DRILLING PROGRAM 1977  
CLAIM 342857 TECK TWP  
Scale 1" = 20 ch 24/9/77

TA Hill

