



42A01NE0228 15 TECK

010

Diamond Drilling

Township OF TECK

Report NO: 15

Work performed by: MAYFIELD EXPLORATION & DEVELOPMENT LTD.

Claim NO	Hole NO	Footage	Date	Note	
L.16621	M-1	252'	Jan/72	(1)	
	M-2	252'	Jan/72	(1)	
	M-3	251'	Jan/72	(1)	
	M-4	150'	Jan/72	(1)	
	M-5	150'	Jan/72	(1)	
	M-6	250'	Jan/72	(1)	
	M-9	250'	Feb/72	(1)	
	M-10	250'	Feb/72	(1)	
	M-11	300'	Feb/72	(1)	
	L.1354	M-7	350'	Jan/72	(1)
		M-8	350'	Feb/72	(1)

11 2805

Notes: (1) Mineral Exploration Assistance Program, 1972

MAYFIELD EXPLORATION AND DEVELOPMENT LTD.

Suite 405

67 Yonge Street

Toronto, Ontario

W. J. P. Murphy

REPORT ON DIAMOND DRILLING

JANUARY 1972

KIRKLAND LAKE, ONTARIO

SUMMARY

During January and February 1972, a program of surface diamond drilling was conducted on patented claims T16621 and L1354, part of a group of patented claims belonging to Mayfield Exploration and Development Ltd. in the Kirkland Lake area.

A total of 2,805 feet of diamond drilling was done in the vicinity of the Kirkland Hunton shaft. Eleven holes were drilled on an azimuth of 154° at a dip of 45°. The deepest hole was 350 feet long, reaching a vertical depth below surface of 240 feet. These holes explored two lenses of favourable red porphyry which strike north-east across the east end of the property. No intersections of ore grade gold values were obtained in the holes. No further work in this area of the property is recommended for the present. The core recovered from the drilling is stored at Mathieu's Cartage, at the south end of Main St., Kirkland Lake.

PROPERTY

The claims of Mayfield Exploration and Development Ltd. comprise part of the former Amalgamated Kirkland property at Kirkland Lake, Ontario. There are nine full claims and a small claim in the present group numbered:

T16619 - T16621 inclusive
T16589
L1354 - L1355 inclusive
L5687
L6729 - L6730 inclusive
L6787

PROPERTY (cont'd)

This group of contiguous claims lies immediately to the south of the Kirkland Lake Gold and the Teck Hughes properties which were large gold producers in the early 1900's.

PREVIOUS WORK

A considerable amount of diamond drilling and underground exploration work was done on the present claim group in the years when the mines in Kirkland Lake were active. The object was to find gold bearing structures parallel to the rich main break which passed through the Kirkland Lake Gold, Teck Hughes and Macassa properties. The most encouragement on the Amalgamated Kirkland property was obtained on claim T16621 known in the 1920's as the Hunton property. During the 1920's a shaft approximately 400 feet deep was sunk on the Hunton property on small quartz veins carrying gold. Subsequently, drifting was done on these veins in the vicinity of the shaft, a crosscut was driven some 750 feet north from the shaft on the 375 foot level and an inclined winze sunk from the north end of this crosscut to a depth of 675 feet below surface. This winze was designed to explore the No. 4 vein which occurs in conjunction with a minor lens of porphyry some 700 feet north of the shaft.

In 1944, a long flat diamond drill hole was drilled from the Macassa Mine property. This diamond drill hole on the 3,000

PREVIOUS WORK (cont'd)

foot level of the Macassa property was 1,308 feet long and explored the west end of the then Amalgamated Kirkland property. None of the above work resulted in the finding of economic bodies of ore. In 1945, following the completion of the flat hole from the Macassa property, it was decided by Frobisher Exploration Co. to do further surface exploration in the Hunton shaft area.

A study of the geology of the area was done by W.C. Martin, who recommended a series of diamond drill holes to be drilled dipping southward in the vicinity of the Hunton shaft on claim T16621. The object of this program was to test for north dipping veins at shallow depth. In 1945, part of this drilling program was carried out, with indifferent results. The present diamond drill program, slightly modified from Martin's original proposal, completes the 1945 Program.

MAYFIELD EXPLORATION AND DEVELOPMENT LTD.
DIAMOND DRILLING PROGRAM 1972

During January and February of 1972 eleven holes were drilled on claims T16621 and L1354 to explore the shallow depth possibilities along the gold bearing structures indicated in previous exploration. The gold occurs in quartz veins in porphyry or syenite and is accompanied by considerable pyrite and other accessory minerals.

A large intrusion of porphyry extends north-east across the northern parts of claims L5687, L1355, L1354 and across the southern margin of T16621. This porphyry mass has the best potential for developing large tonnages of ore, while to the north, in the vicinity of the winze, a smaller porphyry lens has minor ore making potential. Eight holes, totalling 2,005 feet of drilling, were put down on the main porphyry mass and three holes, totalling 800 feet of drilling, were drilled in the vicinity of the winze.

No significant mineralization was encountered in any of the holes. Eight samples were taken on the southern tier of holes with results as indicated on the log sheets. No samples were taken on the core in the vicinity of the winze in the three northerly holes; mineralization and quartz veins in these holes were practically non-existent. The logs of these holes and location map is appended.

CONCLUSIONS

The area in the vicinity of the Hunton shaft on claim T16621 has been well explored to a depth of 200 feet from surface by diamond drilling. Underground drifting and crosscutting near the shaft and to the north, in the vicinity of the winze, has shown that the gold bearing structures are weak to a depth of 400 feet near the shaft and to 700 feet in the vicinity of the winze.

The flat hole drilled from the Macassa Mines' property was in all probability to the west of claims L5687 and L6729 of Mayfield's western boundary. This hole indicates a lack of favourable conditions for ore in the western part of the Mayfield property.

It is recommended that no further work be done at this time in the hope that work on surrounding properties will, in time, provide useful information on which to base future plans.

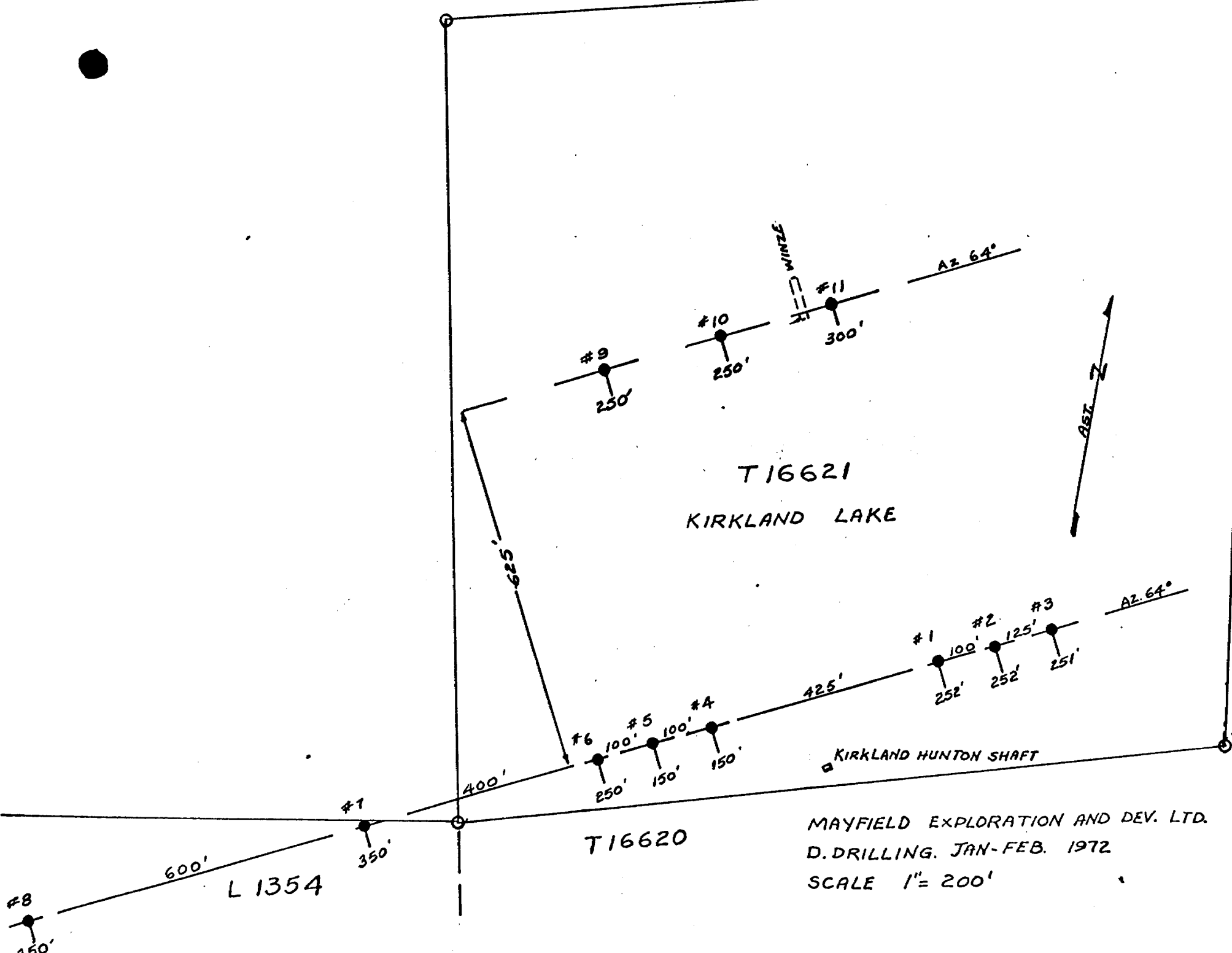
Respectfully submitted,

TROJAN GEOLOGICAL SERVICES



T. Heale, P.Eng.





T16621
KIRKLAND LAKE

T16620

L 1354

KIRKLAND HUNTON SHAFT

MAYFIELD EXPLORATION AND DEV. LTD.
D. DRILLING. JAN-FEB. 1972
SCALE 1" = 200'

DIAMOND DRILL RECORD

PROPERTY Mayfield Exp. Kirkland Lake HOLE NO. M1
claim T16621

SHEET NUMBER 1 SECTION FROM _____ TO _____ STARTED Jan 10 1972
 From KIRKLAND HUNTON SHAFT
 LATITUDE 120° 33' 40" Then DATUM _____ COMPLETED Jan 11
 DEPARTURE 22.5' @ 64° To collar M1. BEARING 142° True ULTIMATE DEPTH 252
 ELEVATION _____ DIP -45° PROPOSED DEPTH 250
collar is 120° at 33' 40", 22.5' @ 64° from Kirkland Hunton Shaft

DEPTH FEET	FORMATION	SAMPLE NO.	WIDTH OF SAMPLE	GOLD. g	SLUDGE GOLD g
0-12'	Casing			g	
12-172'	Red porphyry, some feldspar phenocrysts, some sections of minor fracturing & cementing with narrow (1/8"-1/4") Qtz stringers, no sulphides except as follows:				
105'-106'	brecciated porphyry sealed with fine quartz stringers	7022	1'-0"	0.005	
118'-6"-119'6"	slightly brecciated porphyry with narrow Qtz stringers and minor fine pyrite	7023	1'-0"	0.01	
128 to 130'-138'	slightly brecciated red porphyry with narrow Qtz stringers and minor fine pyrite				
172'	Contact at 50° to core with green tuffs no sulphides on Contact.				
172'-252'	greenish tuffs with agglomerate inclusions & fragments, some scattered threads of quartz, no sulphides.				

N.M.P. TORONTO

DRILLED BY Hosking D. Drilling, McWatters SIGNED W. Keab
Inc.

DIAMOND DRILL RECORD

PROPERTY Mayfield Exploration Ltd
Kirkland Lake, Claim T 16621

HOLE NO. M 2

SHEET NUMBER 1 of 2

SECTION FROM _____ TO _____

STARTED Jan 13 1972

LATITUDE Collar of M2 is

DATUM _____

COMPLETED Jan 13

DEPARTURE 100' @ A264° from M1

BEARING 154° True

ULTIMATE DEPTH 252'

ELEVATION _____

DIP -45°
100' N64°E of Hole M1

PROPOSED DEPTH 250'

DEPTH FEET	FORMATION	SAMPLE NO.	WIDTH OF SAMPLE	GOLD #	SLUDGE GOLD #
0 - 8'	Casing			9	
8' - 48'-10"	Red porphyry				
48'-10" - 60'	Altered porphyry or tuff, strongly altered to 53' then less altered to 60'; a 1" quartz vein at 52'. Core is fractured and recemented with fine gr. stone 49'-60'				
48'-10" - 50'-8"	Altered por. with grtz vein 1"	7020	1'-10"	0.005	
50'-8" - 52'-9"	altered por. with 1" + 1/2" grtz vein	7021	2'-1"	NIL	
60' - 74'	Red Porphyry, some fracturing & recementing with silica, a few minor grtz veins and minor fine pyrites from 60'-74'				
74 - 120'	Red porphyry, minor silica and fine pyrites, occasional inclusion of altered green tuff as from 90'-91' & 96'-97'				
120'	Contact at 10° to core with green tuff				
120' - 140'	Siliceous greenish tuff showing faint banding 35° to core minor disseminated fine pyrites about 12.5' below				
140'	Contact at 10° to core with red porphyry				
140 - 147'-6"	Red porphyry				

N.M.P., TORONTO

DRILLED BY Hastings McWaters, Lake

SIGNED Deale

DIAMOND DRILL RECORD

PROPERTY Mayfield Exploration & Dev. Ltd

HOLE NO. M2

SHEET NUMBER 2721

SECTION FROM _____ TO _____

STARTED Jan 13 1972

LATITUDE _____

DATUM _____

COMPLETED Jan 13 1972

DEPARTURE _____

BEARING 154° True

ULTIMATE DEPTH 252

ELEVATION _____

DIP -45°

PROPOSED DEPTH 250'

DEPTH FEET	FORMATION	SAMPLE NO.	WIDTH OF SAMPLE	GOLD g	SLUDGE GOLD g
147'6"	Contact porphyry to greenish tuff, some alteration of Tuff at Contact			9	
147'6" - 252	greenish tuffs, some sections show faint banding, some inclusions, lappulae, some specks and threads of quartz, some fine scattered pyrite		238' - 252'		

N.M.P., TORONTO

DRILLED BY Hosking

SIGNED T. Keane

DIAMOND DRILL RECORD

PROPERTY Mayfield Exploration Ltd
Neelum T16621, Kirkland Lake,

HOLE NO. M3

SHEET NUMBER 1

SECTION FROM _____ TO _____

STARTED January 15, 1972

LATITUDE Collar of M3

DATUM _____

COMPLETED Jan 16, 1972

DEPARTURE 15 12.5 @ Az. 64°

BEARING 154° True.

ULTIMATE DEPTH 251

ELEVATION from Collar M2

DIP -45°
12.5' N 64° E of Hole M2

PROPOSED DEPTH 250'

DEPTH FEET	FORMATION	SAMPLE NO.	WIDTH OF SAMPLE	GOLD g	SLUDGE GOLD g
0-6'	Casing			g	
6'-33'	greywacke with threads of yellow sericite				
33'-75'	pink fractured porphyry or trachyte some alteration to 50' then fresher porphyry to 75'				
75'-130'	Red porphyry with occasional inclusion of dark rock, some fine disse. pyrite at 87.5				
130'	contact with greenish tuff				
130'-251'	greenish tuff with occasional faint banding, 1 1/2" qtz plus very minor fine pyrite at 150'. No faulting or fracturing throughout hole.				

N.M.P., TORONTO

DRILLED BY Horsking

SIGNED T. Heale

DIAMOND DRILL RECORD

PROPERTY Mayfield Exploration Ltd
claim T16621 Kirkland Lake

HOLE NO. M 4

SHEET NUMBER 1

SECTION FROM _____ TO _____

STARTED Jan 18, 1972

LATITUDE Collar M4 IS

DATUM _____

COMPLETED Jan 18, 1972

DEPARTURE 125' @ 244° from

BEARING 154° True

ULTIMATE DEPTH 150'

ELEVATION Collar M3

DIP -45°
42.5' S 64° W of Hole M1

PROPOSED DEPTH 150'

DEPTH FEET	FORMATION	SAMPLE NO.	WIDTH OF SAMPLE	GOLD g	SLUDGE GOLD g
0-29'	Casing				
29-41'	Conglomerate 1"-2" greywacke + cherty pebbles				
41-51	red Trachyte or porphyry fine grained				
51-53	agglomerate - grey green				
53-57	red Trachyte or Porphyry - fine grd.				
57-89	granestuff, faint banding + breccia inclusions				
89-124	red porphyry, faint phenocrysts, some inclusions of tuff from 100'-124' few scattered clusters of fine des. pyrite accompanying 1/8" to 1/4" Qtz veinlets contact @ 124' tuff				
102-104	porphyry, 2 narrow Qtz veinlets in 1" of Core	7024	2.0	0.02	
124-150	grey green tuff with faint bedding in sections, some fine breccia				

DRILLED BY Hosking

SIGNED T Deale

DIAMOND DRILL RECORD

PROPERTY Mayfield Explorations Ltd
Claim T16621 Kirkland Lake

HOLE NO. M5

SHEET NUMBER 1

SECTION FROM _____ TO _____

STARTED Jan 18, 1972

LATITUDE Collar of M5 IS

DATUM _____

COMPLETED Jan 18, 1972

DEPARTURE 100' @ 244° from

BEARING 154° True

ULTIMATE DEPTH 150

ELEVATION Collar of M4

DIP -45
100'S64'W of Hole M4

PROPOSED DEPTH 150'

DEPTH FEET	FORMATION	SAMPLE NO.	WIDTH OF SAMPLE	GOLD g	SLUDGE GOLD g
0-38	Casing				
38-63	Red Trachyte, or fine grd porphyry				
63-95	greenish grey tuff, odd fragment of Jasper chert				
80'-80'6"	Tuff with some qtz & pyrite	7025	0.6'	0.005	
95-96'4"	Red trachytes, at 95' the fused contact tuff/trachyte is very irregular and tuff shows alteration over 1" next trachyte, at 96'4" contact trachyte/tuff is very irregular and indented, trachyte fingers penetrate into tuff, contact is fused, No evidence of alteration in either rock at 96'4". Does not look like intrusive cont.				
96'4"-150'	grey green tuffs, with some inclusions of fine red Jasper bx. and other fragments. From 100-125 feet bedded and inclusions some sections with fine fracturing and patchy qtz, no strong fractures, no sulphides				

DRILLED BY Hosking

SIGNED T. Seal

DIAMOND DRILL RECORD

PROPERTY Mayfield Explorations Ltd
claim T16621 Kirkland Lake Ont

HOLE NO. M6

SHEET NUMBER 1

SECTION FROM _____ TO _____

STARTED June 24

LATITUDE Collar of M6 IS

DATUM _____

COMPLETED Jan 25

DEPARTURE 100' @ 244° from

BEARING 154° True

ULTIMATE DEPTH 750'

ELEVATION Collar of M5

DIP -45
100' S64°W of Hole M5

PROPOSED DEPTH 150'

DEPTH FEET	FORMATION	SAMPLE NO.	WIDTH OF SAMPLE	GOLD \$	SLUDGE GOLD \$
0-42	Casing				
42'-64'	Conglomerate, small 1"-2" pebbles				
64	Conglomerate / Red Syenite contact				
64-91½	Red syenite or Trachyte with some chert sericite carbonate alteration - 1" at 79½', 4" at 81', no quartz or sulphides in alteration				
91½	Contact between slightly brecciated syenite and volcanic agglomerate 80° to Core.				
91½-149	grey green volcanic agglomerate and tuff pyrite plus 1/8" qtz veinlet over 2" at 98½'; 1/2" vein of qtz with pyrite at 108½'. From 112'-114½' agglomerate is brecciated lengthwise to core and sealed with barren white quartz and carbonate. Tuff with faint bedding in section 125-135, very strong brecciated tuff 136-149. From 142½' to 143' altered tuff with minor pyrite and a 1/8" qtz vein.				
112-115	brecciated tuff with qtz + Carb.	7026	3'0	<0.005	

N.M.P. TORONTO

DRILLED BY Weskeriq

SIGNED Weskeriq

DIAMOND DRILL RECORD

PROPERTY Mayfield Exploration Ltd
Kaitiaki Lake T16621

HOLE NO. M6

SHEET NUMBER 2

SECTION FROM _____ TO _____

STARTED Jan 24 1972

LATITUDE Collar of M6 IS

DATUM _____

COMPLETED Jan 25 1972

DEPARTURE 100' @ 244° from

BEARING 154° True

ULTIMATE DEPTH 250

ELEVATION Collar of M5

DIP -45°

PROPOSED DEPTH 150

DEPTH FEET	FORMATION	SAMPLE NO.	WIDTH OF SAMPLE	GOLD \$	SLUDGE GOLD \$
149	Contact at 45° to core, brecciated tuff / red Porphyry				
149 - 204 1/2	red porphyry, 149 - 149 1/2' fragments of digested tuff, also sections of digested tuff 160' - 164' and few 2" - 4" sections at other locations, no mineral in these altered sections				
204 1/2	Contact red Porphyry / tuff				
204 1/2 - 231	tuff and agglomerate - grey green				
215 - 216	Some Pyritised and spots of gtz.	7027	1.0	10.005	
231	Contact volcanics / red porphyry - Segments				
231 - 250	red porphyry,				

DRILLED BY Hosking

SIGNED [Signature]

DIAMOND DRILL RECORD

PROPERTY Mayfield Kirkland Lake - ^{L 5433} ~~FL 1351~~ HOLE NO. M 7

SHEET NUMBER 1

SECTION FROM _____ TO _____

STARTED JAN 1972

LATITUDE M 7 is 400' west M 6

DATUM _____

COMPLETED JAN 29, 1972

DEPARTURE CV Az 240° (SG4°W)

BEARING 154° True N.

ULTIMATE DEPTH 350'

ELEVATION _____

DIP - 45

PROPOSED DEPTH 350

DEPTH FEET	FORMATION	SAMPLE No.	WIDTH OF SAMPLE	GOLD g	SLUDGE GOLD g
0-18	Casing				
18-184	red feldspar porphyry with short sections of conglomerate to 34.5 feet, from 95' to 97' increasing alteration, from 97' to 102' bleached to light yellow green (solidified fragments of greenstone?) From 102' to 184' fine grained red feldspar porphyry				
184-215.5	metamorphosed greenstone (tufts?)				
215.5-231.5	bleached syenite with gradational contact to metagreenstone at 231.5				
231.5-350	medium grained meta greenstone				

N.M.P., TORONTO

DRILLED BY

Hoskings

SIGNED

Heal

DIAMOND DRILL RECORD

PROPERTY Mayfield Kirkland Lake claim 4354 HOLE NO. M 8

SHEET NUMBER 1

SECTION FROM _____ TO _____

STARTED Feb. 1972

LATITUDE M 8 is 60° 56' 4" W

DATUM _____

COMPLETED Feb 1972

DEPARTURE (12.244°) of M 7

BEARING 154° True N.

ULTIMATE DEPTH 350

ELEVATION _____

DIP - 45°

PROPOSED DEPTH 350

DEPTH FEET	FORMATION	SAMPLE No.	WIDTH OF SAMPLE	GOLD \$	SLUDGE GOLD \$
0 - 7	Casing				
7 - 71	red feldspar porphyry				
71 - 71.8	greenstone				
71.8 - 73.5	red feldspar porphyry				
73.5 - 76.5	greenstone				
76.5 - 162.5	red feldspar porphyry				
162.5 - 307	metamorphosed greenstone becoming coarser grained at 247', at 267' a 1 1/2" barren quartz vein, development of red feldspar from 280' - 300', shearing from 303.5 to 305.5, a gradational contact at 307' with red syenite				
307 - 317	red syenite or very fine grained red porphyry				
317 - 350	meta greenstone				

DRILLED BY Storking

SIGNED Beale

DIAMOND DRILL RECORD

PROPERTY Mayfield, Kirkland Lake, claim T16621 HOLE NO. M 9

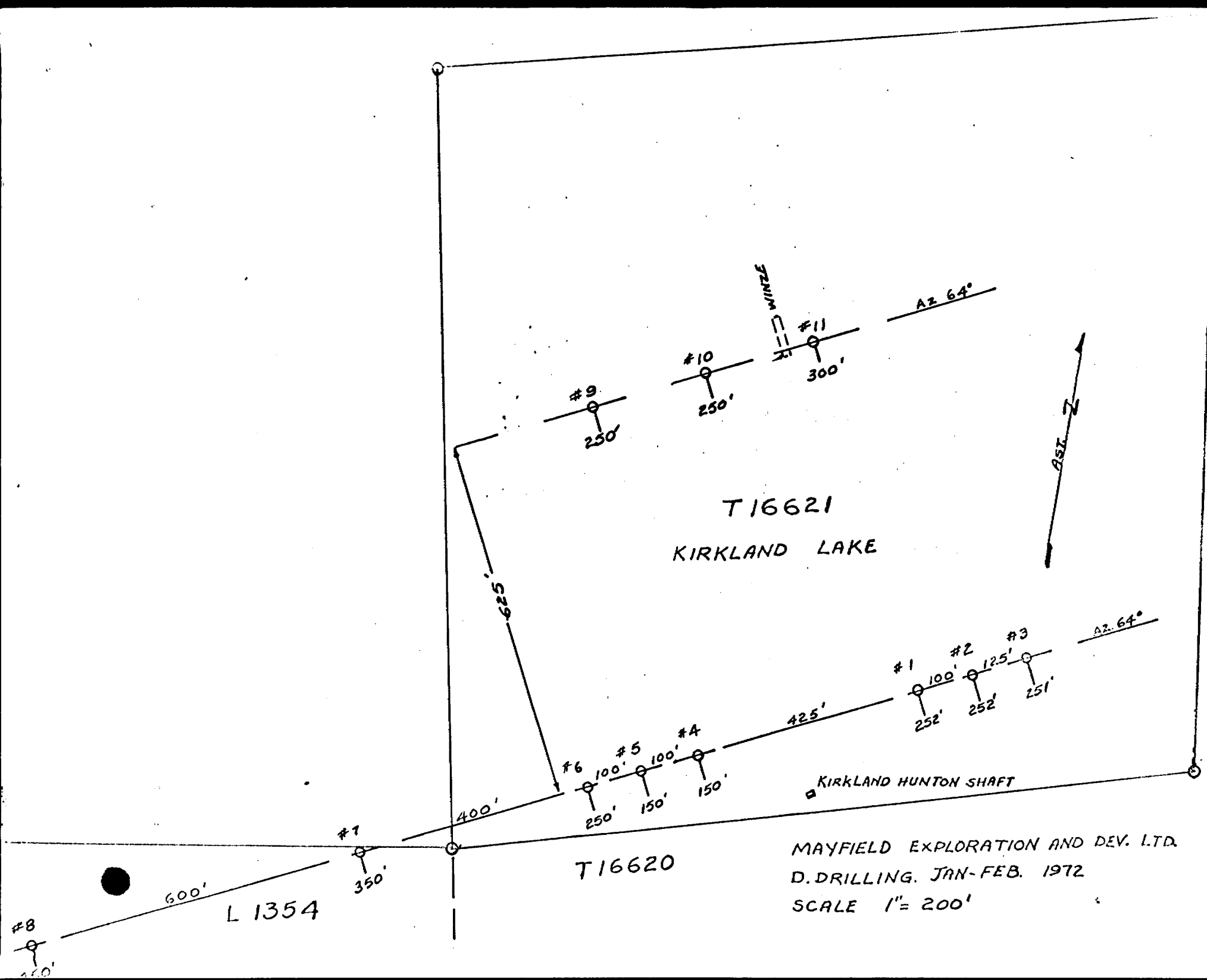
SHEET NUMBER 1 SECTION FROM _____ TO _____ STARTED Feb 1972
From Kirk. Hole T015 SWPT
 LATITUDE 750' at A2 334° then DATUM _____ COMPLETED Feb 1972
 DEPARTURE 175' at A2 244° to BEARING 154° True ULTIMATE DEPTH 250
 ELEVATION Collar. M 9 DIP -45° PROPOSED DEPTH _____

DEPTH FEET	FORMATION	SAMPLE NO.	WIDTH OF SAMPLE	GOLD \$	SLUDGE GOLD \$
0 - 12	Casing				
12 - 40	fine grained tuff				
40 - 47	grey porphyry				
47 - 244	Siliceous altered tuff to 50' then fine grained tuff, a few round inclusions at 85 1/2 feet. fragmental tuff 110' - 124', a small fragment of Jasper at 124'. From 155' - fragmental tuff with some rounded pebbles of porphyry (polymictic conglomerate) 175' - 220'. From 220' on grades to tuff.				
244 - 250	red syenite or porphyry with minor feldspar & hornblende				

N.M.P., TORONTO

DRILLED BY Horking

SIGNED Deal



T16621
KIRKLAND LAKE

T16620

KIRKLAND HUNTON SHAFT

MAYFIELD EXPLORATION AND DEV. LTD.
D. DRILLING. JAN-FEB. 1972
SCALE 1" = 200'

DIAMOND DRILL RECORD

PROPERTY Mayfield Exploration Ltd. Kirkland Lake.

HOLE NO. M10

CLAIM T 16621

SHEET NUMBER 1

SECTION FROM _____ TO _____

STARTED Feb 1972

LATITUDE 4 KIRKLAND HUNTER SHAFT

DATUM _____

COMPLETED Feb 1972

DEPARTURE 750' @ A2 334' Then
30' @ A2 64' to collar M10

BEARING 154° True

ULTIMATE DEPTH 250

ELEVATION _____

DIP -45

PROPOSED DEPTH _____

DEPTH FEET	FORMATION	SAMPLE No.	WIDTH OF SAMPLE	GOLD g	SLUDGE GOLD g
0-10	Casing				
10-60.5	Tuff, some small rounded inclusions at 16', scattered breccia fragments from 25-50'				
60.5-67.0	red feldspar porphyry				
67.0-212	grey green tuff with few fragments of breccia 1/2" barren quartz veinlet at 98.5', small fragment of red jasper at 105', from 130' to 145' metamorphosed tuff with minor barren quartz, some bleaching from 217 to 223, rounded fragments from 226-232, minor Pegite 220-250				
212-250	red feldspar porphyry				

N.M.P., TORONTO

DRILLED BY

Hoskins

SIGNED

Heck

DIAMOND DRILL RECORD

PROPERTY Mayfield, Kulland Lake claim T16621 HOLE NO. M 11

SHEET NUMBER 1 A2 SECTION FROM _____ TO _____ STARTED Feb 72
FROM Q KIRKLAND HUNTON SHEET
 LATITUDE 750' @ A2 334° Then DATUM _____ COMPLETED Feb 12 72
 DEPARTURE 130' @ A2 64° To Coler Hill BEARING 154° True ULTIMATE DEPTH 300'
 ELEVATION _____ DIP -45° PROPOSED DEPTH 300

DEPTH FEET	FORMATION	SAMPLE NO.	WIDTH OF SAMPLE	GOLD g	SLUDGE GOLD g
0 - 15	Casing				
15 - 31	Conglomerate				
31 - 188.5	dark green tuff, no bedding, occasional inclusion from 60' on 10" of breccia 124-125' and 143-144'.				
188.5 - 193.5	Porphyry				
193.5 - 212	tuff				
212 - 238	grey to brown porphyry, eyes 2-3 mm, few fine thund. sp. grite				
238 - 247.5	Tuff? Partly metamorphosed, some faint breccia fragments				
247.5 - 252.5	Pinkish porphyry, eyes 4-5 mm				
252.5 - 300	Light grey tuff with occasional bp fragment cherty, very light coloured siliceous tuff, no quartz, trace sulph lead 299'				

N.M.P., TORONTO

DRILLED BY Hosking

SIGNED Deble

DIAMOND DRILL RECORD

PROPERTY _____ HOLE NO. M11

SHEET NUMBER 2 SECTION FROM _____ TO _____ STARTED Feb 1972

LATITUDE _____ DATUM _____ COMPLETED Feb 12 1972

DEPARTURE _____ BEARING 154° ULTIMATE DEPTH 300'

ELEVATION _____ DIP -4.5 PROPOSED DEPTH _____

DEPTH FEET	FORMATION	SAMPLE No.	WIDTH OF SAMPLE	GOLD g	SLUDGE GOLD g
188.5-193.5	porphyry				
193.5-212	Tuffs				

N.M.P., TORONTO

DRILLED BY Hoosking

SIGNED W. Deak