



42A01NE0231 12 TECK

010

Diamond Drilling

Township OF TECK

Report NO: 12

Work performed by: N. EVOY

Claim NO	Hole NO	Footage	Date	Note
L. 77827	1	118'	June/64	
	2	125'	June/64	
	1-65	160'	June/65	

Notes:

DIAMOND DRILL RECORD

PROPERTY L-77827, N. Evoy Claims, Teck Tp., HOLE NO. 1

SHEET NUMBER _____ SECTION FROM _____ TO _____ STARTED _____
 LATITUDE _____ DATUM _____ COMPLETED _____
 DEPARTURE _____ BEARING _____ ULTIMATE DEPTH _____
 ELEVATION _____ DIP _____ PROPOSED DEPTH _____

DEPTH FEET	FORMATION	SAMPLE NO.	WIDTH OF SAMPLE	GOLD \$	SLUDGE GOLD \$
0 - 6	Casing.				
6 - 18.2	Conglomerate, greenish gray, somewhat sheared; pebbles are small and angular, and consist of chert and greenstone chiefly; quartz veinlets at 17.5 & 18.0.				
18.2- 20.0	Graywacke, gray green and medium grained; some broken core at 19.0 suggests a fracture or shear.				
20.0- 38.7	Conglomerate, as above; note small quartz veinlets, usually with fine pyrite mineralization in the walls, at 24.5, 25.7, 28.0, 35.8, 36.1 and 36.8; some broken core at 37.8.				
38.7- 50.8	Tuff, fine grained, mostly green but shows many reddish fragments; veinlets at 38.9, 39.5, 41.5, 45.0 & 46.0.				
	42.4-43.1 quartz-calcite vein with contacts at right angles to the side of core.				
	50.2-50.8 Broken core with rusty mud-seam at 50.2-50.5.				
50.8- 56.5	Porphyry, greenish red, border phase; contains some tuffaceous matter; note veining at 52.6-53.4.				
56.5-118.3	Porphyry, red bird's eye type; shows very few thread veinlets; veining is more prominent at 82-98 with a cluster of veinlets at 91; this rock is fresh and brittle, resulting in some broken core.				
	End of hole.				

SWASTIKA LABORATORIES LIMITED

N.M.P., TORONTO-STOCK FORM NO. 501 REV. 12/51

DRILLED BY _____

June 10/64.

SIGNED _____

W. J. J. J.

DIAMOND DRILL RECORD

PROPERTY L-77827, N. Evoy Claims, Teck Tp., HOLE NO. 2

SHEET NUMBER _____ SECTION FROM _____ TO _____ STARTED _____
 LATITUDE _____ DATUM _____ COMPLETED _____
 DEPARTURE _____ BEARING _____ ULTIMATE DEPTH _____
 ELEVATION _____ DIP _____ PROPOSED DEPTH _____

DEPTH FEET	FORMATION	SAMPLE NO.	WIDTH OF SAMPLE	GOLD %	SLUDGE GOLD %
0 - 93.6	Conglomerate, gray green and somewhat sheared; pebbles are small & angular, and consist chiefly of chert and greenstone; shearing is at 45-50 deg. to the side of the core and increases in intensity; last 2' are brecciated; some broken core at 1, 5, 8, 17, 38.5, 43.2, 57.2, 72.3-75.0, 81.0 & 91.8.				
93.6-106.6	Note minor quartz-calcite veinlets at 48.5, 57.2, 59.5, 66.7, 87.0, 87.3 & 91.8				
93.6-106.6	Greywacke, medium grained.				
	102.8-103.6 - quartz-calcite vein, little rusty.				
	105.5-106.6 - Altered fine grained section with 3-4 quartz veinlets and 2 fingers of porphyry.				
106.6-108.5	Contact section, about 50% vein matter plus fingers of porphyry & greywacke.				
108.5-125.0	Porphyry, reddish bird's eye type; shows considerable light quartz veining and some broken core.				
	108.5-109.6 - Veined section.				
	113.0-113.8 - Ditto.				
	114.0-116.0 - Lost core.				
	116.0-117.1 - Veined section with broken core.				
	118.2-123.4 - Veined section with 6" vein at 122.				
	End of hole.				

Accompanied reports
 on L-77827
 and L-77825
 Rechecked July 23/64

N.M.P. TORONTO-STOCK FORM NO. 501, REV. 12/51

DRILLED BY Norman Edward Hill June 13/64.

SWASTIKA LABORATORIES LIMITED

SIGNED _____

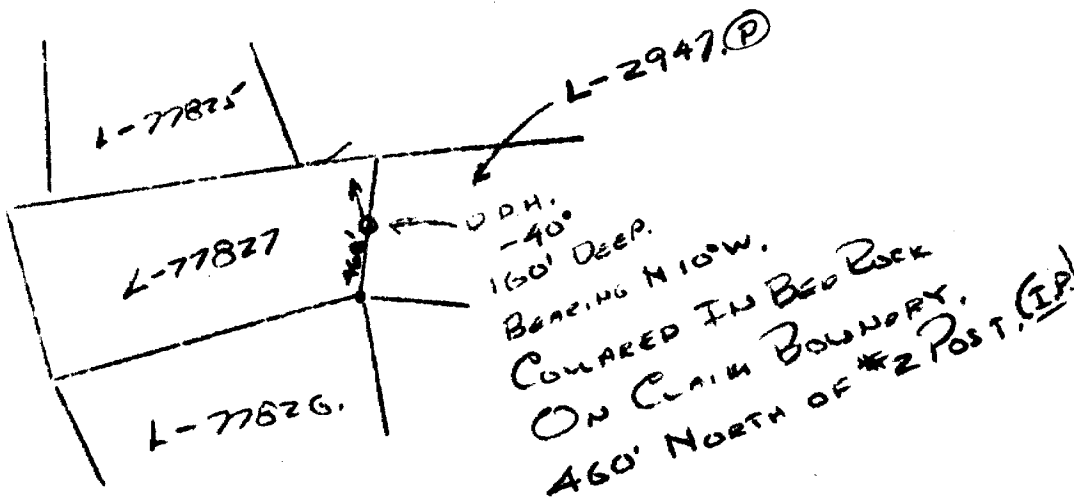
W. G. G. G.

SKETCH SHOWING LOCATION
OF D.D.H. ON CLAIM # L-77827.

EVOT GROUP. - TECK TWP.

DRILLED BY NEUMAN DRILLING & EX.

JUNE 1-5/65.



DIAMOND DRILL RECORD

PROPERTY Evoy (Goldbanks)

HOLE NO. 1-65

SHEET NUMBER 1

SECTION FROM 0' TO _____

STARTED JUNE 1/65

LATITUDE _____

DATUM _____

COMPLETED JUNE 5/65

DEPARTURE _____

BEARING N 10° W.

ULTIMATE DEPTH 160.0'

ELEVATION _____

DIP -40°

PROPOSED DEPTH 160.0'

DEPTH FEET	FORMATION	SAMPLE NO.	WIDTH OF SAMPLE	GOLD g	SLUDGE GOLD g
0'-1.5'	QUARTZ-FELSPAR PORPHYRY, MINOR BARREN QUARTZ VEINING (-1")				
1.5'-45.2'	QUARTZ-FELSPAR PORPHYRY				
45.2'-45.4'	BARREN QUARTZ STRINGER				
45.4'-51.4'	QUARTZ-FELSPAR PORPHYRY, MINOR BARREN QUARTZ VEINING (-1").				
51.4'-57'	QUARTZ-FELSPAR PORPHYRY - QUARTZ FRACTURE ZONE (30% QUARTZ). VERY MINOR PYRITE MINERALIZATION.				
57'-77.5'	QUARTZ-FELSPAR PORPHYRY, MINOR QUARTZ STRINGERS (-1/4").				
77.5'-160.0'	QUARTZ-FELSPAR PORPHYRY, ^{SLIGHTLY} COARSER GRAIN THAN 0'-77.5'. MINOR QUARTZ STRINGERS (-1/2").				