



42A01NE0237 63.3164 TECK

UPPER CANADA MINES

MINE OFFICE
DOBIE, ONTARIO

HEAD OFFICE
SUITE 600
UNIVERSITY AVE.
TORONTO, 1, ONT.
KIRKLAND LAKE, ONT.

March 8, 1973

THIRD REPORT - FEASIBILITY OF MINING LAKE SHORE
SURFACE PILLARS, PROJECT KL-16

The substantial increase in the price of gold since the second report was submitted in April, 1972, warranted further investigation of this project. The report at that time indicated that although the area west of Section 1W, was too hazardous to mine, the area over 201 east stope could be mined, but that the tonnage estimated was too small to justify the capital cost involved. The increased value of the indicated ore reserves at the present price of gold would cover these costs, so that if the ore reserves could be proven there would be a viable operation.

A program of diamond drilling from surface, to check the indicated ore over 201 east stope, and to test a possible extension of this ore to the west was instigated in September, 1972. Three holes - S2, S3 and S4 were drilled into the assumed ore section, a fourth, S1, was drilled to the west above a barren section on the 200 ft. level. All holes cut the break or a fault in it's expected location, but none encountered commercial values. Apparently a fault gap is responsible for lack of ore in this location.

In view of poor response to this drill program the project has been discontinued.

Enclosed are 2* copies of 10 scale plans, drill sections and a longitudinal section showing the location and results of the drilling, and a plan of Teck Township, showing the location of the claim on which the work was done.

UPPER CANADA RESOURCES LIMITED

J. H. Botsford
Vice-President of Mining Operations

JHB/PF

S-1	170'
S-2	179'
S-3	178'
S-4	190'
	<hr/>
	717'

* other copy - Kirkland Lake office

WILLROY MINES LIMITED

DIAMOND DRILLING LOG

Hole No. 15-2

Northing 1025.0
 Easting 2630.5
 Azimuth 325°-00'
 Location LAKE SHORE
 Remarks

Depth 179'
 Dip -47
 Core Size A

Elevation
 Date Sept. 28/72
 Logged By G.W.

Level Surface
 Purpose Checking
ore extension West
& above 201W Stop

Footage	Description	Core Sample					Sludge Sample		
		From	To	Total	Number	Oz.	From	To	Oz.
18'	Casing								
77	Porphyry - looks like syenite with a number of porphyry intrusions - reddish at 25 1/2 a slip or small break								
77	By 42' porphyry becomes very distinct with darker ground mass and more phenocrysts								
77	Alteration zone - probably altered porphyry								
77	Some qtz stringers in altered porphyry at 79 small slip								
79	Porphyry - fine grained with small phenocrysts								
80	A number of fine calcite & qtz stringers at 112 a few tight slips								
151	Lost core - some alteration becomes evident at 153 1/2								
174	Strongly altered porphyry - greenish and slightly silicified with some sulphides - little qtz	161 3/4	163	1 1/4	9483	-10			

WILLROY MINES LIMITED

DIAMOND DRILLING LOG

Hole No. J-4

Northing 1625.0
 Easting 2630.5
 Azimuth 331°-00'

Depth 190'
 Dip -45°
 Core Size R

Elevation _____
 Date Oct 2/72
 Logged By W. J. [unclear]

Level SURFACE
 Purpose Checking
ore extension west
and above 201W slope

Remarks LAKE SHORE
HALE DRILLED ABOUT MIDWAY BETWEEN "2 AND "3

Footage		Description	Core Sample				Sludge Sample			
From	To		From	To	Total	Number	Oz.	From	To	Oz.
0	19	Casing								
19	167 1/2	Granite porphyry. - normal to about 125' then becomes quite red - ground appears firm and CORES well - NO LOST CORES								
	at 167 1/2	abrupt change to extremely altered material, greenish to creamy colored and sheared - break material - sulphides	167 1/2	168 3/4	1 1/4	#9178	0.04			
	162	one very small dab of gys from 167 1/2 to 168 1/2' - separat 50' to core								
	163	Post core - doesn't appear to be any vein material here								
	From 170'	alteration becomes less to more normal granite porphyry at 172'. No indication of quartz but core is slat from 167 to 170' - at 170' quite definite porphyry.								
	170	more normal granite porphyry probably a little more basic here - no vein material indicated -								
	190'	End of hole.								

↑
 metal altered break material - sulphides
 ↓
 167 1/2 168 3/4 1 1/4 #9178 0.04
 (split)

no return water - no sludge

Bernhardt Twp.

THE TOWNSHIP OF

TECK

DISTRICT OF TIMISKAMING

LARDER LAKE MINING DIVISION

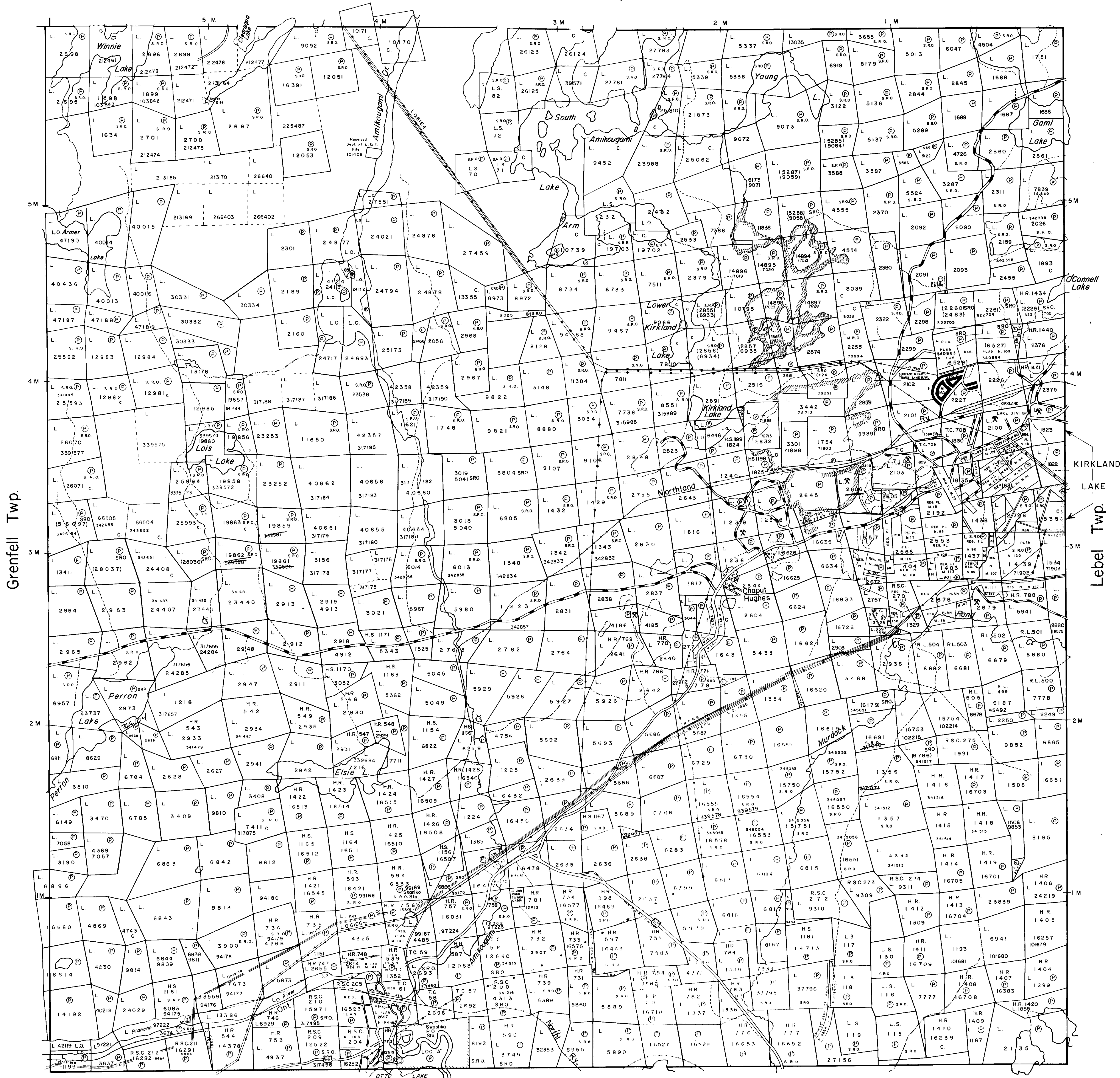
SCALE: 1-INCH = 20 CHAINS

LEGEND

- PATENTED LAND ⊙
- CROWN LAND SALE ⊙
- LEASES ⊙
- LOCATED LAND ⊙
- LICENSE OF OCCUPATION ⊙
- MINING RIGHTS ONLY M.R.O.
- SURFACE RIGHTS ONLY S.R.O.
- ROADS —
- IMPROVED ROADS —
- KING'S HIGHWAYS —
- RAILWAYS —
- POWER LINES —
- MARSH OR MUSKEG —
- MINES —
- CANCELLED ⊙

NOTES

- 400' surface rights reservation along the shores of all lakes and rivers.
- Area shown thus for Slime disposal
- Mining Claims L 2728 & 1535
Shown thus Withdrawn from Staking under Sec 39(b) of the Mining Act File: 67398
- Mining Rights for Claim L 5779
Subject to Sec 36 of the Mining Act



Grenfell Twp.

Lebel Twp.

Otto Twp.

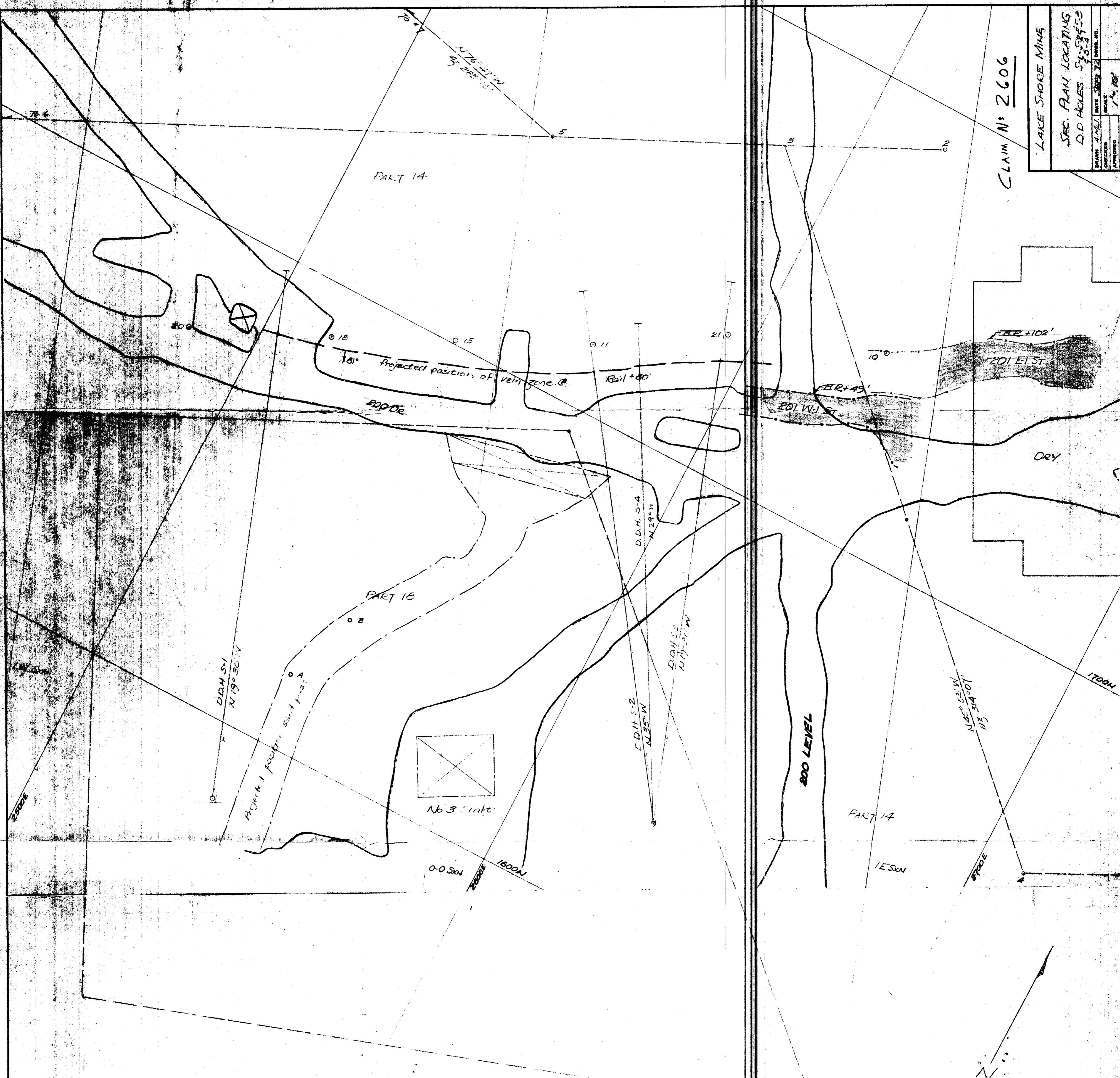
PLAN NO.-M. 392

ONTARIO DEPARTMENT OF MINES AND NORTHERN AFFAIRS



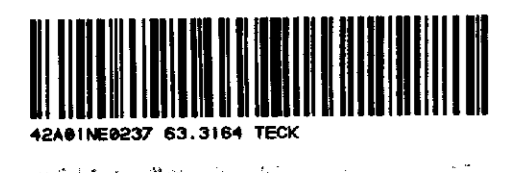
LAKE SHORE MINES	
SFC. PLAN LOCATING	
D.D. HOLES 51-52-53	
DRAWN A.M.E.I.	DATE SEPT 72
CHECKED	APPROVED
SCALE	1" = 100'

CLAIM N° 2606



CLAIM N° 2606

LAKE SHORE MINES
 SURFACE PLAN SHOWING
 LOCATION OF D.D. HOLES
 SCALE 1" = 100'
 A.M.E.I. SEPT 72



300 Elev

1319' 30" W

45°

400 Elev

172'

81°

201 W OR

500 Elev



42481NER037 03.3104 TECK

LAKE SHORE WARE	
SECTION LINDSEY WARD	
APPROVED DATE 05/07/01	
DATE	05/07/01
DESIGNED	SCALE
APPROVED	7"=10'

500 Elev

5150 N. P.

47°

-53° 30'

400 Elev

Reference Line

51°

300 Elev



42A01NE0237 63.3164 TECK

230

500 Elev

N 19° 30' W →

-46°

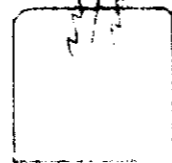
400 Elev

Reference Line

MS

179'

81°



300 Elev

LAKE SHORE MINE		
SECTION LOOKING WEST THROUGH D.D.H. # S-3 ON O+50E		
DRAWN A.M.I.	DATE SEPT 72	DRWG. NO.
CHECKED	SCALE	
APPROVED	1" = 10'	



42A01NE0237 63.3164 TECK

500' Elev

2500' ± 0.15' elev

400' Elev

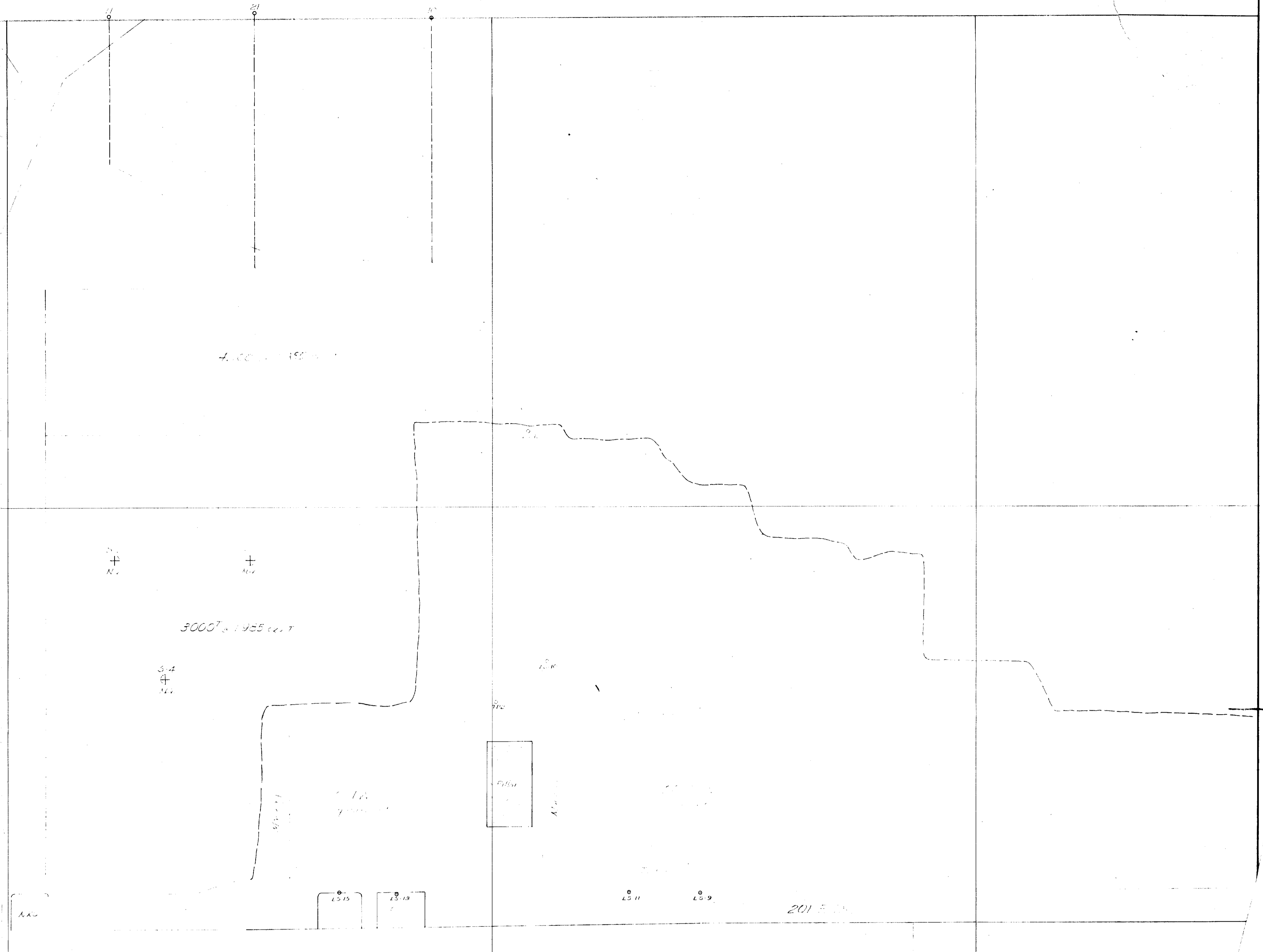
602

3000' ± 1.95' elev

300' Elev

200' Elev





LAKE SHORE MINE		
LONGITUDINAL SECTION		
201 E 1 & 201 W 1 STOPS		
DRAWN	A. McI.	DATE
		SEPT 78
		SCALE
		1" = 10'