

DIAMOND DRILLING



42A01NE0310 41 TECK

010

TOWNSHIP: TECK

REPORT No.: 41

WORK PERFORMED BY: Francis T. O'Connor

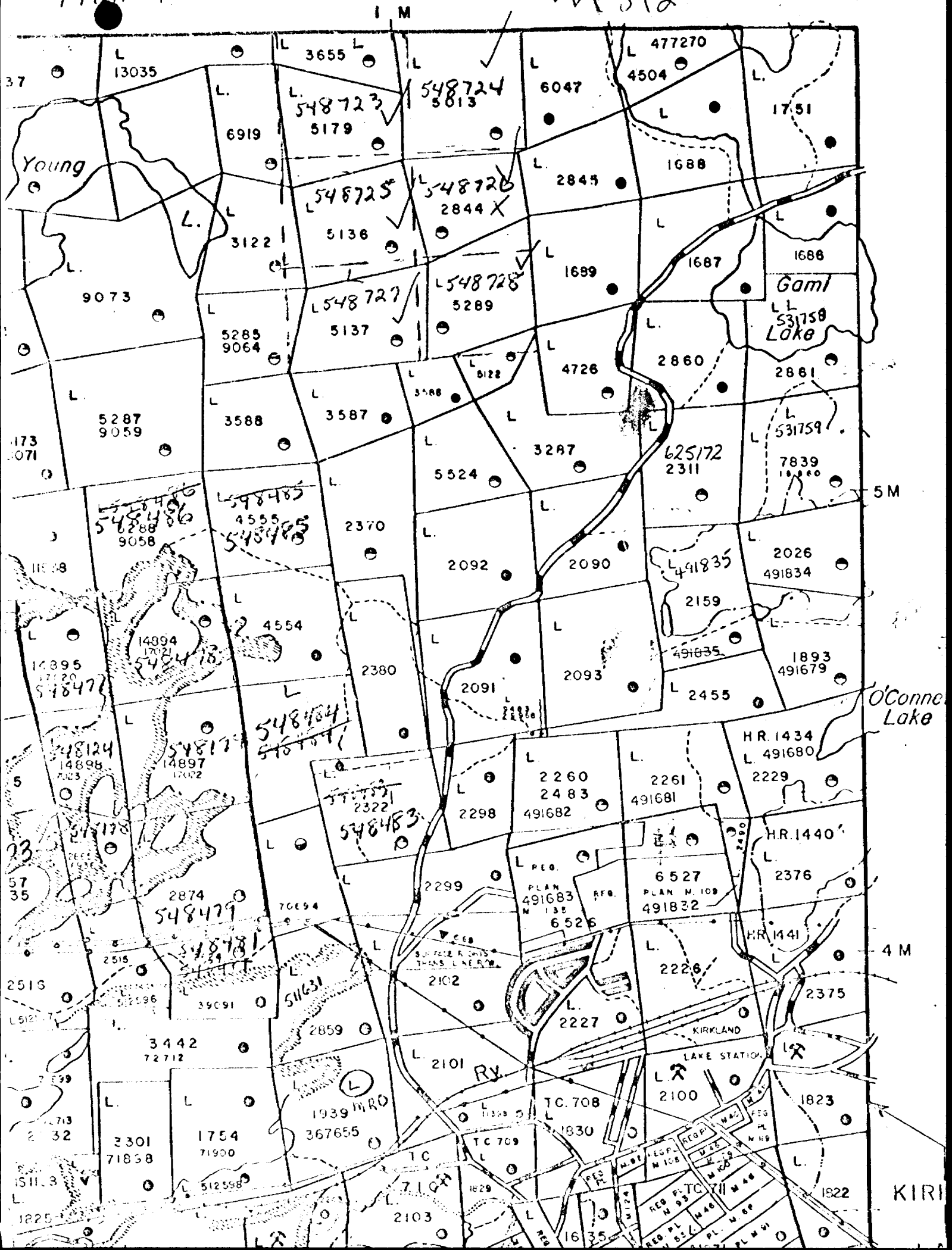
<u>CLAIM No.</u>	<u>HOLE No.</u>	<u>FOOTAGE</u>	<u>DATE</u>	<u>NOTE</u>
L 548726	T-81-5	315.0	Aug/81	(1)

NOTES: (1) #429-81

FRANCIS T. O'CONNOR

Teektwp
M392

429-81

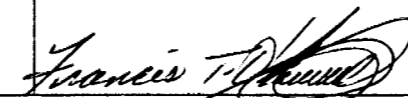




Ministry of
Natural
Resources

**Diamond
Drilling
Log**

Fill in on every page Hole No. **781-5** 3

Drilling Company PATRICK J. HARRISON Ltd P.O. Box 232, KIRKLAND LAKE Ont. P4H 3M9		Collar Elevation	Bearing of hole from true North 150°	Total Footage 315'	Dip of Hole at Collar 45°	Location of hole in relation to a fixed point on the claim. 440' SOUTH FROM #1 POST WEST 554' FROM EAST LINE - SEE MAP ENCLOSED.	Map Reference No.	Claim No. 1-548926
Date Hole Started AUG. 19/81	Date Completed AUG 28/81	Date Logged 1981.09.16	Logged by F. PLOEGER		Ft.		Location (Twp., Lot, Con. or Lat. and Long.) TECK TOWNSHIP	Property Name O'CONNOR, F. T.
Exploration Co., Owner or Optionee FRANCIS T O'CONNOR, 12 TEBURN DRIVE, P.O. DRAWER 730, KIRKLAND LAKE, ONTARIO, P4H 3K1.		Date Submitted	Submitted by (Signature) 		Ft.			
					Ft.			

Footage		Rock Type	Description <small>Colour, grain size, texture, minerals, alteration, etc.</small>	Planar Feature Angle *	Core Specimen Footage †	Your Sample No.	Sample Footage		Sample Length	Assays ‡	
From	To						From	To			
0	4		Casing								
4	13		basalt flow - aphanitic flow - amygdaloidal in places light to medium green grey								
13	315		massive basalt - fine to medium grained massive (tholeiitic?) flow - very sharp contact with aphanitic flow and no grain size gradation in the massive flow contact - dark grey green - occasional Qtz-carb. and epidote stringers to 1" from 60-119 coarse grained section of flow - the flow is generally more fine grained towards bottom of hole								
	315		END OF HOLE								

L-548721

DERNDORF TP

L-548722

L-548723

L-548724

P
6907

TECK TR.

P
2845

SHAFT.



L-548725

L-548726

P
1689

L-548727

L-548728

P
4726

DIP 45° - HOLE M-81-6
BEARING 150°

DIAMOND DRILL HOLE T-81-5 - 315'
SCALE 1" = 400'

AUG 31/81

F. T. O'CONNOR