



42A01NE2001 39 TECK

010

DIAMOND DRILLING

TOWNSHIP: TECK

REPORT No.: 39

WORK PERFORMED BY: LAMPE RESOURCE CO. LTD.

<u>CLAIM No.</u>	<u>HOLE No.</u>	<u>FOOTAGE</u>	<u>DATE</u>	<u>NOTE</u>
L 491182	AK-1	201.0	Feb/81	(1)

NOTES:

(1) #251 - 81



REPORT OF DIAMOND DRILLING  
ON  
"AMALGAMATED-KIRKLAND" PROPERTY  
LAPE RESOURCE CO. LTD. OPTION  
TECK TOWNSHIP 77 251-81  
ONTARIO

HIGHLAND LAKE, ONTARIO

MAY 1981

BY: MICHAEL LEAHY

LOCATION

Claim # L - 491182 is situated at the west end of Chaput Hughes in Teck Township. Highway #66 traverses the northern portion of the claim which is part of a 28 claim group under option to Lampe Resource Co. Ltd., Willowdale, Ontario.

GEOLOGY

Geology of the above mentioned claim as well as the remainder of the group has been previously discussed in the Fifty-Seventh Annual Report of the Ontario Department of Mines - [Part 5, 1948] as well as in several reports on file in the assessment library at the Kirkland Lake Resident Geologist's Office.

The hole was drilled to intersect the Amalgamated-Kirkland fault where economic assays had been previously found in syenitized sediments.

DIAMOND DRILLING PROGRAMME

One hole was drilled to intersect the above-mentioned fault. The hole was collared at a point 800 feet south of and 100 feet east of the #4 post of claim # L - 491182. Bearing was N 10° West and the dip was 45°. Length of the hole was 201 feet.

COMMENTS

A 10 foot section in syenitized graywacke gave encouraging assays. More drilling is planned to further investigate the economic potential of the zone.

A handwritten signature in cursive script that reads "Michael Leahy". The signature is written in dark ink and is positioned above the typed name.

M. Leahy



Drilling Company <b>Lampe Resource Co. Limited</b>		Collar Elevation	Bearing of hole from true North <b>N 100° W</b>	Total Footage <b>201</b>	Dip of Hole at Collar <b>45°</b>	Location of hole in relation to a fixed point on the claim. <b>800' South, 100' East FROM #4 post of L. 491182</b>	Map Reference No. <b>TECK Township</b>
Date Hole Started	Date Completed	Date Logged <b>Feb 18/1</b>	Logged by <b>M. LEAHY</b>	Date Submitted	Submitted by (Signature) <i>Michael Leahy</i>		Claim No. <b>L. 491182</b>
Exploration Co., Owner or Optionee <b>Lampe Resource Co. Ltd.</b> 230 Byng Ave Willowdale Ont.						Property Name <b>"AMALGAMATED-Kirkland"</b>	

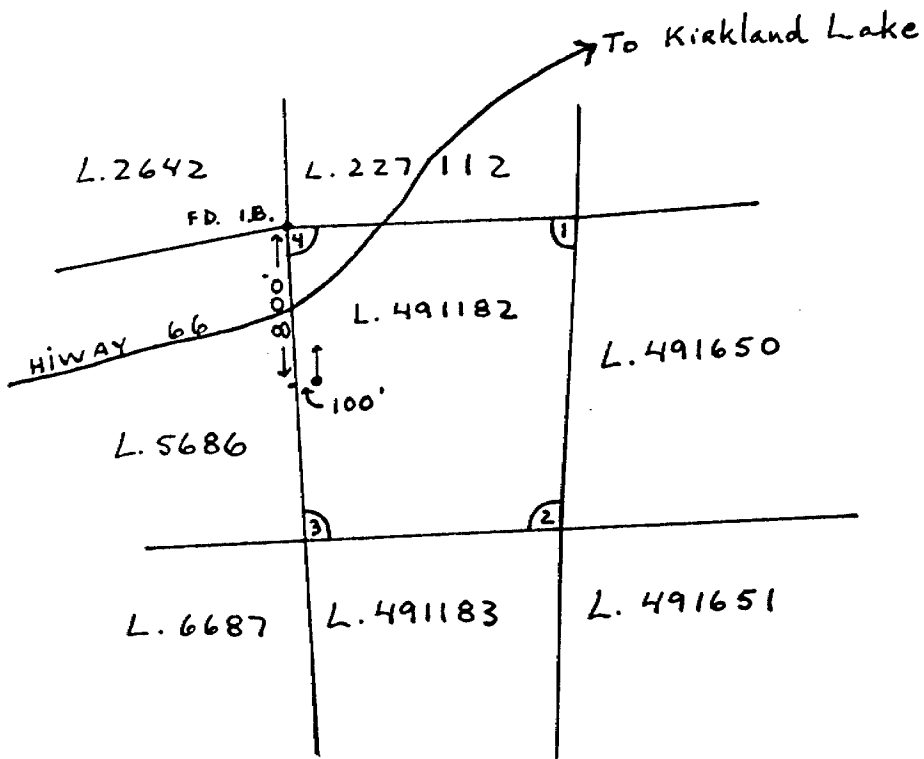
Footage		Rock Type	Description Colour, grain size, texture, minerals, alteration, etc.	Planar Features Angle *	Core Specimen Footage †	Your Sample No.	Sample Footage		Sample Length	Assays †
From	To						From	To		
0	12	CASING								
12	19	Conglomerate	gray-pink - syenitized + brecciated in places occ 1/8" qcu + chlorite							
19	20	Syenite	pink - several qcu to 1/8" - some porphyritic text.							
20	25	Conglomerate	gray-pink - syenitized + brecciated in places occ 1/8" qcu, chlorite, sericite							
25	68	Syenite	contact 1/4" qcu at 25', pink, fractured occ qcu, chlorite, spec hematite in fractures minor py, rare sp.							
68	82	Graywacke	gradational contact. gray-green - pink where more syenitized. py blebs + stringers in places							
82	89	Syenite pov.	contact 1/4" qcu at 82, phenocrysts to 5 mm							
89	92.5	Graywacke	sharp contact at 89', syenitized + fractured minor py, spec. hem. in fract areas							
92.5	93.5	Syenite	pink - fine grained - py in fract areas + dissem.							
93.5	101	Graywacke	gray-green, pink where more syenitized qcu, specular hematite + chlorite							
101	105	Syenite	pink - may be trachytic tuff - altered with small blebs of py in places							
105	118	Conglomerate	dark gray - slightly syenitized in places qcu to 1/8"							
118	121	Graywacke	green - fine grained sericitized shear							
121	131	Conglomerate	gray - brecc + syenite in places. 6" syenite at 123' with py + spec hem in fract areas.							
131	133	Syenite	pink - fine grained, small qc filled fractures							
133	136	Conglomerate	gray - same as 121-131							
136	138	Syenite	pink - same as 131-133							
138	145	Hybrid zone	Syenite + conglomerate with qc filled fract. + py in fract areas + disseminated							
145	150	Conglomerate	gray - clasts to 10 cm ± fine grained graywacke bed at 147'							
150	177	Syenite	pink - fine to med. grained. some well pyritized sectious. occ small qc filled fractures							
177	201	Syenite	dark. good pos. text. bit of py. few red inclusions							

LAMPE RESOURCE Co. Ltd.

DRILL HOLE LOCATION

TECK TOWNSHIP

SCALE - 1" = 1000'



Michael Leahy April, 1981