

FROM (F)	TO (F)	DESCRIPTION	Sample	FROM (F)	TO (F)	Length (F)						
		402.15 402.30 1.5" wide, pk-wt qtz/carb vn with moderately shrd tuff interstitial to vng, and a sharp ser/chl slip @ 85 tca, umin										
		402.90 403.00 1" pk-wt shrd qtz/carb vn as above, umin										
		453.50 453.80 CHERTY TUFF, lt bn, finely laminated, cherty tuff horizon @ 75 tca										
		462.50 466.00 Lapilli Tuff horizon; lt gy gn with 25% red trachytic clasts to 0.3", and 5% rock frags and xtal shards in a fg, sandy ash mx										
		469.00 470.80 fg-mg sandy ash tuff, wing	4516	469.00	470.80	1.80	.001					
		470.80 471.80 1.5" qtz/amph vn as below	4517	470.80	471.80	1.00	.001					
		471.15 471.30 1.5" wide, gy, bxd smoky qtz vn with a 0.5" wide, irregular seam of blue, wispy to acicular amphibole (riebeckite?) and Tr-1% irregular, seams of py. 75 tca. This vn is hosted in a strange XTAL Tuff bed, 9" wide with 10% euhedral pk-wt plag? laths which are all subparallel to each other and at right angles to bdg										
471.50	484.80	TUFFACEOUS CONGLOMERATE; massive, dk gn-bn, mx supported with 35% subangular to well rounded, heterolithic clasts to >4", prdominantly ttrachytic, in a fg sandy ash mx										
		471.50 484.80 TUFFACEOUS CONGLOMERATE										
		471.80 474.00 massive tuffaceous cong, wing	4518	471.80	474.00	2.20	.001					

FROM (F)	TO (F)	DESCRIPTION	Sample	FROM (F)	TO (F)	Length (F)						
484.80	580.70	TUFF; Section of intercalated sandy and vfg silty ash tuffs with lesser, narrow lapilli tuff horizons. Locally very well bdd @ 70-80 tca. Units are lt gn to gy-bn to purple										
	502.00	503.00	4519	502.00	503.00	1.00	.001					
		2.5" QC vn										
	502.50	502.70										
		2.5" wide pk-wt Qtz/carb vn @ 80 tca, bullish										
	525.10	527.80										
		QTZ/CAL stwk; pk-wt-bn irregular Qtz/carb stkwk, locy with included bxd wlrk frags. Vns are 0.1-0.4" wide barren bullish										
	573.00	574.00	4520	573.00	574.00	1.00	.001					
		as described below										
	573.40	573.90										
		Series of 0.2-0.4" wide bn-gy-pk Qtz/carb vnlt' @ 80 tca, in mody serc altd tuff										
	578.00	579.00										
		6" QC vn, bullish										
	578.00	578.80	4521	578.00	579.00	1.00	.001					
		6" wide pk-wt Qtz/carb vn @ 40 tca, bullish										
580.70	594.00	SYENITE PORPHYRY; massive, fresh, red-bn with 35% wt plag phenos and 2% mafic xenos. 1% ubiq Qtz/carb vnlt's										
	594.00	594.00										
		BOH casing pulled										
		END OF HOLE										
		Total number of samples : 10										
		Total length sampled : 12.40										
		Core stored at Macassa Mine										

[Signature]
 MAY. 3 / 04

Apr. 30/04

CEGEP Rouyn-Noranda
DRILLING LOG

Property: PEGG

Hole no: P-04-131	Zone no:	Contractor: H&S	Started: 01/03/2004
Canton : TRCK			Completed: 03/03/2004
Lot :	Rang :	Claim no: P-2762	
Puit # :	Level :	Section:	Working offic
Collar coordonate :	Line : 07 32 1000	Latitude: 13380.00N	Azimuth: 327°30' 0"
Reference system :	Station: 04 15196 N	Longitude: 8858.00E	Dip: -45° 0' 0"
		Elevation: -9.91	Depth: 400.00

Deviation tests :	Depth	Dip	Az Truth
	400.00 F	-31° 0' 0"	327°30' "

Comments :

Water debit:
Cement :

Plug:
Core size: B.φ

Car
Localisation :
Description :

érée: BQ

Logged by : MARK MASSON

Date logged: 03/03/2004

Hole no: P-04-131



42A01NE2064 2.27607 TECK

FROM (F)	TO (F)	DESCRIPTION	Sample	FROM (F)	TO (F)	Length (F)						
		400.00 400.00 EOH< casing pulled END OF HOLE Total number of samples : 7 Total length sampled : 12.70 core stored at Maussa Mine										

FROM (F)	TO (F)	DESCRIPTION	Sample	FROM (F)	TO (F)	Length (F)						
0.00	14.00	CASING, pulled										
14.00	351.50	CONGLOMERATE; massive, fresh, polymictic peb-cob. Framework to mx supported, locy intercalated with narrow wacke horizons to 2 feet wide										
	49.00 55.00	Blocky frcd ground due to low angle frc set, no apparent structure										
	83.40 85.40	massive cong, wing	4522	83.40	85.40	2.00	.001					
	85.40 86.40	1" QTZ/Mo vn	4523	85.40	86.40	1.00	.001					
	85.85 85.95	1" QTZ/MOLY vn @ 60 tca, milk wt good looking vn with 5% MoS2 and 1% py, generally along Mo. No wlrk alth and no structure, just clean, sharp vn margins.										
	86.40 88.40	massive cong, wing	4524	86.40	88.40	2.00	.001					
	88.40 91.40	massive cong, wing	4525	88.40	91.40	3.00	.001					
	91.40 93.40	as above	4526	91.40	93.40	2.00	.001					
	93.40 94.40	1" qtz/carb vn in serc alyd, mody shrd cong	4527	93.40	94.40	1.00	.001					
	93.60 93.70	1" QTZ/CARB vn @ 55 tca; mody stg ser/Qtz/carb flt/shr with 35% buff-bn shrd/attenuated Qtz/carb vng in stgy serc altd cong. Umin										
	94.40 96.40	massive cong, wing	4528	94.40	96.40	2.00	.001					
	129.00 130.00	1" annealed chlc flt bx, Tr py	4529	129.00	130.00	1.00	.001	.001	.001			

FROM (F)	TO (F)	DESCRIPTION	Sample	FROM (F)	TO (F)	Length (F)					
		vfg to aphanitic grmass. Mody to stgy magnetic, very fresh, unaltered.									
360.00	361.00	1.6" qc vn	4536	360.00	361.00	1.00	.001				
360.55	360.70	1.6" QTZ/Cal vn, bullish @ 80 tca									
361.00	362.50	massive tuff	4537	361.00	362.50	1.50	.001				
362.50	364.00	2.5" qc vn	4538	362.50	364.00	1.50	.001				
362.60	362.85	2.5" QTZ/CARB vn @ 80 tca with chloritized wlrk frags, bounded by sharp chlc slips									
375.00	381.00	Lapilli Tuff/Tuffaceous cong; massive, dk gn to purple/bn with mixed angular lap clasts and subrounded clasts >4" in a fg sandy ash mx. Contacts are grd1									
400.00	400.00	EOH, casing pulled									
		BND OF HOLE									
		Total number of samples : 17									
		Total length sampled : 28.50									
		<i>cone stored at Macassar Mine</i>									

[Signature]
 MAY 3/04

Apr. 30/04

CEGEP Rouyn-Noranda
DRILLING LOG

Property: PEGG

Hole no: P-04-133	Zone no:	Contractor: H&S	Started: 23/02/2004
Canton : TECK			Completed: 25/02/2004
Lot :	Rang :	Claim no: P-2762	
Puit # :	Level :	Section:	Working offic
Collar coordonate :	Line : A 28rouw	Latitude: 13340.00N	Azimuth: 327°30' 0"
Reference system :	Station: 0+ 12797N	Longitude: 9360.00E	Dip: -45° 0' 0"
		Elevation: -3.73	Depth: 160.00

Deviation tests :

Depth	Dip	Az Truth
P	° ' "	° ' "

Comments :



42A01NE2064 2.27607 TECK

040

Water debit:
Cement :

Plug:
Core size: B Q.

Car érée:
Localisation :
Description :

BQ

Logged by : MARK MASSON

Date logged: 24/02/2004

Hole no: P-04-133

FROM (F)	TO (F)	DESCRIPTION	Sample	FROM (F)	TO (F)	Length (F)						
158.20	160.00	<p>GREYWACKE; massive, fg dk gn, fresh arenaceous wacke</p> <p>160.00 160.00 EOH Hole was planned to go to 300 feet but was lost due to lost bit crown in hole. Hole recollared at -50</p> <p>END OF HOLE</p> <p>Total number of samples : 6 Total length sampled : 9.20</p> <p><i>Cone stored at Macassa Mine</i></p>										

[Signature]
 MAY. 3 / 04

FROM (F)	TO (F)	DESCRIPTION	Sample	FROM (F)	TO (F)	Length (F)						
0.00	25.00	CASING, pulled										
25.00	152.50	CONGLOMERATE; massive, framework to mx supported, polymictic peb-cob. Very fresh, intercalated with narrow wacke horizons to 2-3 feet wide										
	37.00 40.00	massive cong, wing	4545	37.00	40.00	3.00	.001					
	40.00 41.00	2.5" qc vn										
	40.00 40.30	2.5" QTZ/CARB vn @ 65 tca, massive pk-wt bullish vn bounded by sharp clc flt slips	4546	40.00	41.00	1.00	.001					
	41.00 43.00	massive cong, wing	4547	41.00	43.00	2.00	.001					
	86.00 88.00	massive cong, wing	4548	86.00	88.00	2.00	.001					
	88.00 89.00	1" qc vn										
	88.00 88.10	1" QTZ/CARB vn @ 80 tca, pk-wt-bn bxd qc vn bounded by sharp chlc flt slips. Barren	4549	88.00	89.00	1.00	.001	.001	.001			
	89.00 92.00	massive cong, wing	4550	89.00	92.00	3.00	.001					
	92.00 95.00	as above	4551	92.00	95.00	3.00	.001					
	95.00 97.00	1" qc vn and irregular qtz/carb flooding in cong. Barren	4552	95.00	97.00	2.00	.001					
	95.70 95.90	1" QTZ/CARB vn and qtz/carb flooding with lt gn, epidote. Barren hungry										
	97.00 99.00	massive cong, wing	4553	97.00	99.00	2.00	.001					

FROM (F)	TO (F)	DESCRIPTION	Sample	FROM (F)	TO (F)	Length (F)						
		244.00 247.00 wky to mody serc altd cong										
		244.00 300.00 Conglomerate is massive and very fresh, predominantly framework supported	4569	244.00	247.00	3.00	.001			4570	blank	.001
		327.50 328.50 3" bullish qtz/carb vn	4571	327.50	328.50	1.00	.001	.001	.001			
		327.90 328.20 3" pk-wt qtz carb vn @ 70 tca, bullish										
337.60	338.20	SYENITE PORPHYRY; massive, red-bn fg, with 1% mafic xenos. Narrow dyke, ucon very irregular, lcon is a sharp chlc slip @ 50 tca										
338.20	354.50	CONGLOMERATE; massive, fresh polymictic peb-cob. Framework supported lcon sharp @ 70 tca										
354.50	360.00	GREYWACKE; massive fg-mg, sandy arenaceous wacke. Very frfresh										
		360.00 360.00 EOH casing pulled										
		END OF HOLE										
		Total number of samples : 26 Total length sampled : 54.00										
		<i>core stored at Macassa Mine</i>										

[Signature]
May 3/64

Apr. 30/04

CEGEP Rouyn-Noranda
DRILLING LOG

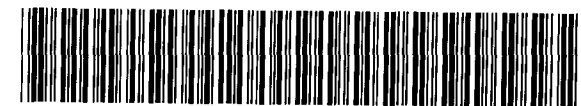
Property: PEGG

Hole no: P-04-134	Zone no:	Contractor: H&S	Started: 27/02/2004
Canton: TECK			Completed: 29/02/2004
Lot :	Rang :	Claim no: P-2762	
Puit # :	Level :	Section:	Working office
Collar coordonate :	Line : + 26+00W	Latitude: 13455.00N	Azimuth: 327°30' 0"
Reference system :	Station: + 13+03N	Longitude: 9522.00E	Dip: -45° 0' 0"
		Elevation: 0.71	Depth: 320.00

Deviation tests :	Depth	Dip	Az Truth
	320.00 F	-45° 0' 0"	327°30' "

Comments :

Water debit:	Plug:	Car	érée:	BQ
Cement :	Core size: B.C	Localisation :	Description :	



42A01NE2064

2.27607

TECK

060

Logged by : MARK MASSON

Date logged: 01/03/2004

Hole no: P-04-134

FROM (F)	TO (F)	DESCRIPTION	Sample	FROM (F)	TO (F)	Length (F)						
		117.50 120.00 massive cong, wing	4576	117.50	120.00	2.50	.015	.015	.015			
132.20	132.60	SYENITE PORPHYRY, very narrow dyke, mg red-bn with 35% plag phenos. Appears to be a real dyke and not a clast in cong Lcon mkby a sharp serc slip @ 40 tca										
132.60	300.20	CONGLOMERATE: massive, fresh polymictic cong										
		143.00 144.80 massive cong, wing	4577	143.00	144.80	1.80	.001					
		144.80 145.90 irregular qtz/carb flooding with tr py										
		144.80 145.90 Qtz/carb flooding, irregular gy-wt qtz/carb vng and pervasive flooding with wispy chl inclusions. Tr patchy py adj to vng	4578	144.80	145.90	1.10	.001					
		145.90 148.00 massive cong, wing	4579	145.90	148.00	2.10	.001					
		188.60 189.60 2" qc vn, tr py	4580	188.60	189.60	1.00	.001					
		189.10 189.30 QTZ/carb vn @ 55 tca, 2" gy-wt qc vn with chlc sutures and Tr wispy py										
300.20	303.90	GREYWACKE; massive, fresh, fg-mg wacke with minor scattered peb clasts										
303.90	320.00	CONGLOMERATE; massive fresh, polymictic peb-cob cong										
		320.00 320.00 BOH casing pulled										
		END OF HOLE										
		Total number of samples : 9 Total length sampled : 15.40										
		<i>cone stored at Macaissa Mine</i>										

[Handwritten signature]
MAY. 3/04

Work Report Summary

Transaction No:	W0480.00672	Status:	APPROVED (D)
Recording Date:	2004-MAY-04	Work Done from:	2004-FEB-15
Approval Date:	2004-AUG-02	to:	2004-MAR-03
External Credits:	\$0		
Reserve:	\$0	Reserve of Work Report#:	W0480.00672
	<u>\$0</u>	Total Remaining	

Status of claim is based on information currently on record.

Date: 2004-OCT-12

GEOSCIENCE ASSESSMENT OFFICE
933 RAMSEY LAKE ROAD, 6th FLOOR
SUDBURY, ONTARIO
P3E 6B5

Tel: (888) 415-9845

Fax: (877) 670-1555

KIRKLAND LAKE GOLD INC.
MACASSA MINE, HWY #66, #3 SHAFT
KIRKLAND LAKE, ONTARIO
P2N 3J1 CANADA

Submission Number: 2.27607
Transaction Number(s): W0480.00672

Dear Sir or Madam

Subject: Deemed Approval of Assessment Work

We have approved your Assessment Work Submission with the above noted Transaction Number(s) as per 6(7) of the Assessment Work Regulation. Only eligible assessment work is deemed approved for assessment work credit. The attached Work Report Summary indicates the results of the approval.

NOTE: The report has not been reviewed for technical deficiencies and reported expenses were not evaluated based on the Industry Standard.

At the discretion of the Ministry, the assessment work performed on the mining lands noted in this work report may be subject to inspection and/or investigation at any time.

PLEASE NOTE: Work performed in and around an operational mine site, and filed for assessment work purposes, is currently being reviewed by the Lands and Exploration subcommittee of the Minister's Mining Act Advisory Committee (MMAAC). The recommendations of the Lands and Exploration subcommittee may have an impact on eligible assessment credits for future submissions of this nature.

If you have any question regarding this correspondence, please contact BRUCE GATES by email at bruce.gates@ndm.gov.on.ca or by phone at (705) 670-5856.

Yours Sincerely,



Ron C. Gashinski
Senior Manager, Mining Lands Section

Cc: Resident Geologist

Michael William Sutton
(Agent)

Kirkland Lake Gold Inc.
(Assessment Office)

Assessment File Library

Kirkland Lake Gold Inc.
(Claim Holder)

Date / Time of Issue: Tue Oct 12 14:12:14 EDT 2004

TOWNSHIP / AREA
TECK

PLAN
G-3719

ADMINISTRATIVE DISTRICTS / DIVISIONS

Mining Division Larder Lake
Land Titles/Registry Division TIMISKAMING
Ministry of Natural Resources District KIRKLAND LAKE

TOPOGRAPHIC

- Administrative Boundaries
- Township
- Concession Lot
- Provincial Park
- Indian Reserve
- CLR, P.E & File
- Contour
- Mine Shaft
- Mine Headframe
- Railway
- Road
- Trail
- Natural Gas Pipeline
- Utilities
- Tower

Land Tenure

Freehold Patent

- Surface And Mining Rights
- Surface Rights Only
- Mining Rights Only

Leasehold Patent

- Surface And Mining Rights
- Surface Rights Only
- Mining Rights Only

Licence of Occupation

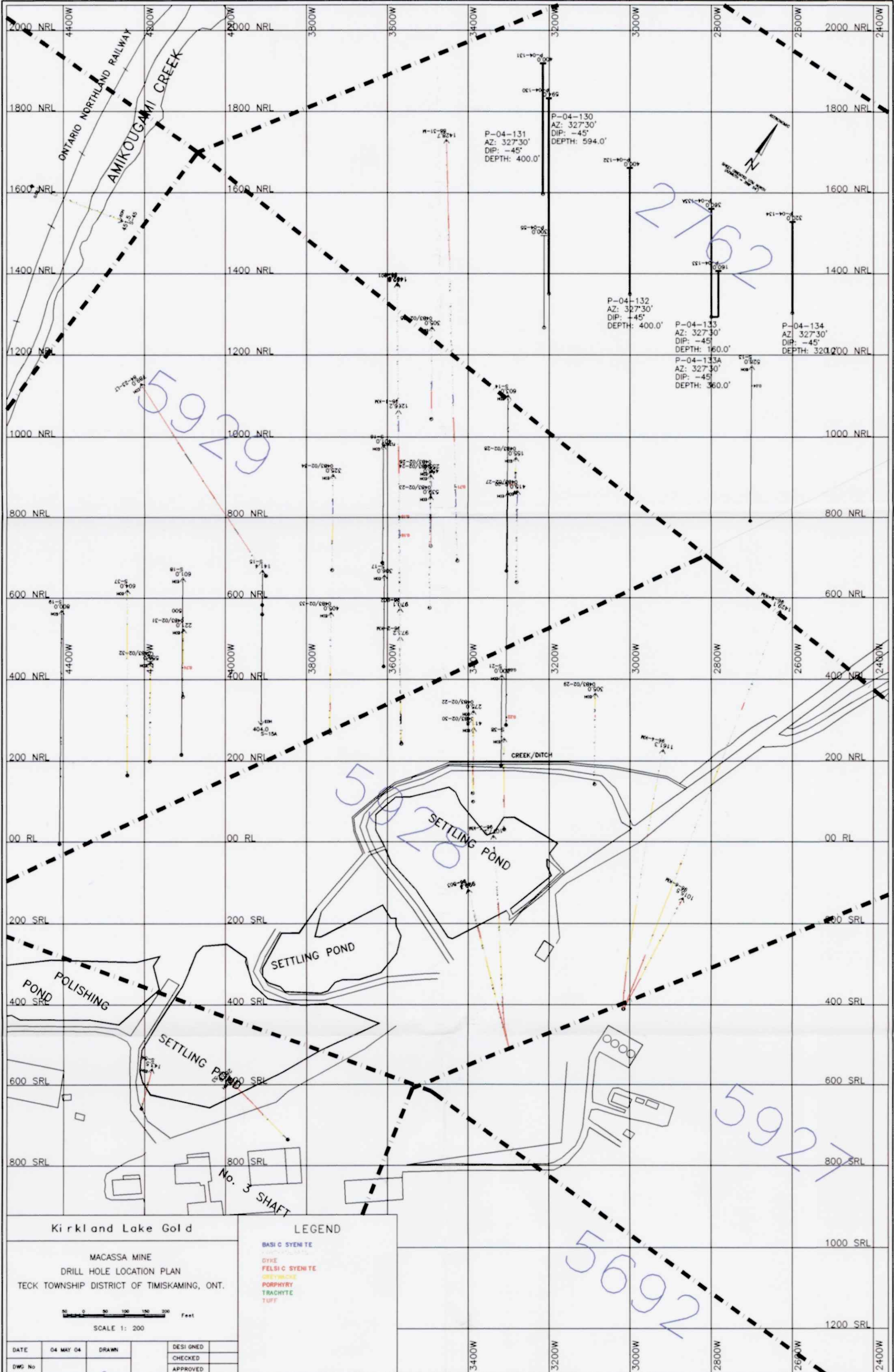
- Uses Not Specified
- Surface And Mining Rights
- Surface Rights Only
- Mining Rights Only

Land Use Permit

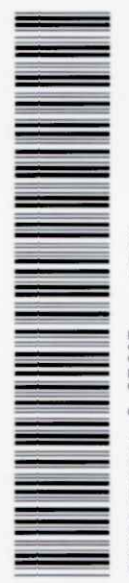
- Order In Council (Not open for staking)
- Water Power Lease Agreement
- Mining Claim
- Paid Only Mining Claims

LAND TENURE WITHDRAWALS

Year	Month	Year	Month	Year	Month	Year	Month
1984	12	1985	12	1986	12	1987	12
1988	12	1989	12	1990	12	1991	12
1992	12	1993	12	1994	12	1995	12
1996	12	1997	12	1998	12	1999	12
2000	12	2001	12	2002	12	2003	12
2004	12	2005	12	2006	12	2007	12
2008	12	2009	12	2010	12	2011	12
2012	12	2013	12	2014	12	2015	12
2016	12	2017	12	2018	12	2019	12
2020	12	2021	12	2022	12	2023	12
2024	12	2025	12	2026	12	2027	12
2028	12	2029	12	2030	12	2031	12
2032	12	2033	12	2034	12	2035	12
2036	12	2037	12	2038	12	2039	12
2040	12	2041	12	2042	12	2043	12
2044	12	2045	12	2046	12	2047	12
2048	12	2049	12	2050	12	2051	12
2052	12	2053	12	2054	12	2055	12
2056	12	2057	12	2058	12	2059	12
2060	12	2061	12	2062	12	2063	12
2064	12	2065	12	2066	12	2067	12
2068	12	2069	12	2070	12	2071	12
2072	12	2073	12	2074	12	2075	12
2076	12	2077	12	2078	12	2079	12
2080	12	2081	12	2082	12	2083	12
2084	12	2085	12	2086	12	2087	12
2088	12	2089	12	2090	12	2091	12
2092	12	2093	12	2094	12	2095	12
2096	12	2097	12	2098	12	2099	12
2100	12	2101	12	2102	12	2103	12
2104	12	2105	12	2106	12	2107	12
2108	12	2109	12	2110	12	2111	12
2112	12	2113	12	2114	12	2115	12
2116	12	2117	12	2118	12	2119	12
2120	12	2121	12	2122	12	2123	12
2124	12	2125	12	2126	12	2127	12
2128	12	2129	12	2130	12	2131	12
2132	12	2133	12	2134	12	2135	12
2136	12	2137	12	2138	12	2139	12
2140	12	2141	12	2142	12	2143	12
2144	12	2145	12	2146	12	2147	12
2148	12	2149	12	2150	12	2151	12
2152	12	2153	12	2154	12	2155	12
2156	12	2157	12	2158	12	2159	12
2160	12	2161	12	2162	12	2163	12
2164	12	2165	12	2166	12	2167	12
2168	12	2169	12	2170	12	2171	12
2172	12	2173	12	2174	12	2175	12
2176	12	2177	12	2178	12	2179	12
2180	12	2181	12	2182	12	2183	12
2184	12	2185	12	2186	12	2187	12
2188	12	2189	12	2190	12	2191	12
2192	12	2193	12	2194	12	2195	12
2196	12	2197	12	2198	12	2199	12
2200	12	2201	12	2202	12	2203	12
2204	12	2205	12	2206	12	2207	12
2208	12	2209	12	2210	12	2211	12
2212	12	2213	12	2214	12	2215	12
2216	12	2217	12	2218	12	2219	12
2220	12	2221	12	2222	12	2223	12
2224	12	2225	12	2226	12	2227	12
2228	12	2229	12	2230	12	2231	12
2232	12	2233	12	2234	12	2235	12
2236	12	2237	12	2238	12	2239	12
2240	12	2241	12	2242	12	2243	12
2244	12	2245	12	2246	12	2247	12
2248	12	2249	12	2250	12	2251	12
2252	12	2253	12	2254	12	2255	12
2256	12	2257	12	2258	12	2259	12
2260	12	2261	12	2262	12	2263	12
2264	12	2265	12	2266	12	2267	12
2268	12	2269	12	2270	12	2271	12
2272	12	2273	12	2274	12	2275	12
2276	12	2277	12	2278	12	2279	12
2280	12	2281	12	2282	12	2283	12
2284	12	2285	12	2286	12	2287	12
2288	12	2289	12	2290	12	2291	12
2292	12	2293	12	2294	12	2295	12
2296	12	2297	12	2298	12	2299	12
2300	12	2301	12	2302	12	2303	12
2304	12	2305	12	2306	12	2307	12
2308	12	2309	12	2310	12	2311	12
2312	12	2313	12	2314	12	2315	12
2316	12	2317	12	2318	12	2319	12
2320	12	2321	12	2322	12	2323	12
2324	12	2325	12	2326	12	2327	12
2328	12	2329	12	2330	12	2331	12
2332	12	2333	12	2334	12	2335	12
2336	12	2337	12	2338	12	2339	12
2340	12	2341	12	2342	12	2343	12
2344	12	2345	12	2346	12	2347	12
2348	12	2349	12	2350	12	2351	12
2352	12	2353	12	2354	12	2355	12
2356	12	2357	12	2358	12	2359	12
2360	12	2361	12	2362	12	2363	12
2364	12	2365	12	2366	12	2367	12
2368	12	2369	12	2370	12	2371	12
2372	12	2373	12	2374	12	2375	12
2376	12	2377	12	2378	12	2379	12
2380	12	2381	12	2382	12	2383	12
2384	12	2385	12	2386	12	2387	12
2388	12	2389	12	2390	12	2391	12
2392	12	2393	12	2394	12	2395	12
2396	12	2397	12	2398	12	2399	12
2400	12	2401	12	2402	12	2403	12
2404	12	2405	12	2406	12	2407	12
2408	12	2409	12	2410	12	2411	12
2412	12	2413	12	2414	12	2415	12
2416	12	2417	12	2418	12	2419	12
2420	12	2421	12	2422	12	2423	12
2424	12	2425	12	2426	12	2427	12
2428	12	2429	12	2430	12	2431	12
2432	12	2433	12	2434	12	2435	12
2436	12	2437	12	2438	12	2439	12
2440	12	2441	12	2442	12	2443	12
2444	12	2445	12	2446	12	2447	12
2448	12	2449	12	2450	12	2451	12
2452	12	2453	12	2454	12	2455	12
2456	12	2457	12	2458	12	2459	12
2460	12	2461	12	2462	12	2463	12
2464	12	2465	12	2466	12	2467	12
2468	12	2469	12	2470	12	2471	12
2472	12	2473	12	2474	12	2475	12
2476	12	2477	12	2478	12	2479	12
2480	12	2481	12	2482	12	2483	12
2484	12	2485	12	2486	12	2487	12
2488	12	2489	12	2490	12	2491	12
2492	12	2493	12	2494	12	2495	12
2496	12	2497	12	2498	12	2499	12
2500	12	2501	12	2502	12	2503	12
2504	12	2505	12	2506	12	2507	12
2508	12	2509	12	2510	12	2511	12
2512	12	2513	12	2514	12	2515	12
2516	12	2517	12	2518	12	2519	12
2520	12	2521	12	2522	12	2523	12
2524	12	2525	12	2526	12	2527	12
2528	12	2529	12	2530	12	2531	12
2532	12	2533	12	2534	12	2535	12
2536	12	2537	12	2538	12	2539	12
2540	12	2541	12	2542	12	2543	12
2544	12	2545	12	2546	12	2547	12
2548	12	2549	12	2550	12	2551	12
2552	12	2553	12	2554	12	2555	12
2556	12	2557	12	2558	12	2559	12
2560	12	2561	12	2562	12	2563	12
2564	12	2565	12	2566	12	2567	



210



42A01NE2064 2.27607 TECK

Kirkland Lake Gold
MACASSA MINE
DRILL HOLE LOCATION PLAN
TECK TOWNSHIP DISTRICT OF TIMISKAMING, ONT.

SCALE 1: 200

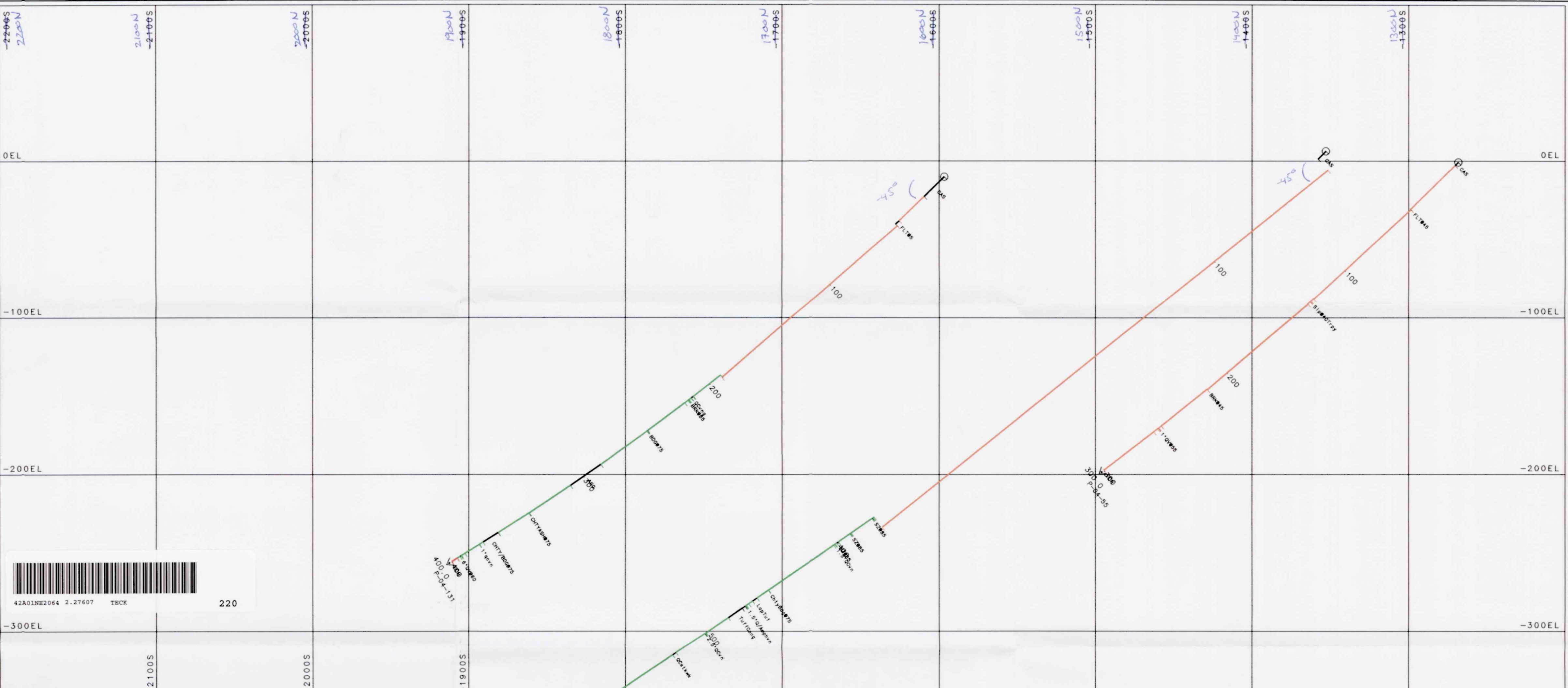
DATE	04 MAY 04	DRAWN		DESIGNED	
DWG No				CHECKED	
				APPROVED	

LEGEND

- BASIC SYENITE
- DYKE
- FELSIC SYENITE
- QUARTZ
- PORPHYRY
- TRACHYTE
- TUFF

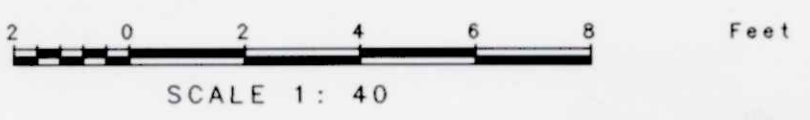
S Carmichael May 4/04

2.27607



Kirkland Lake Gold
 KIRKLAND LAKE OPERATION
Section looking 237° 30'
 SECT. 32+00W Far:100 Near:100

LEGEND
 BASIC SYENITE
 CONGLOMERATE
 DYKE
 FELSIC SYENITE
 GREYWACKE
 PORPHYRY
 TRACHYTE
 TUFF



S. Carmichael May 4/04

DATE	30 APR 4	DRAWN	DESIGNED
DWG No		DATAMINE	CHECKED
			APPROVED



Kirkland Lake Gold

2.27607

KIRKLAND LAKE OPERATION

Section Looking 237° 30'

SECT. 30+00W Far:100 Near:100

2 0 2 4 6 8 Feet

SCALE 1: 40

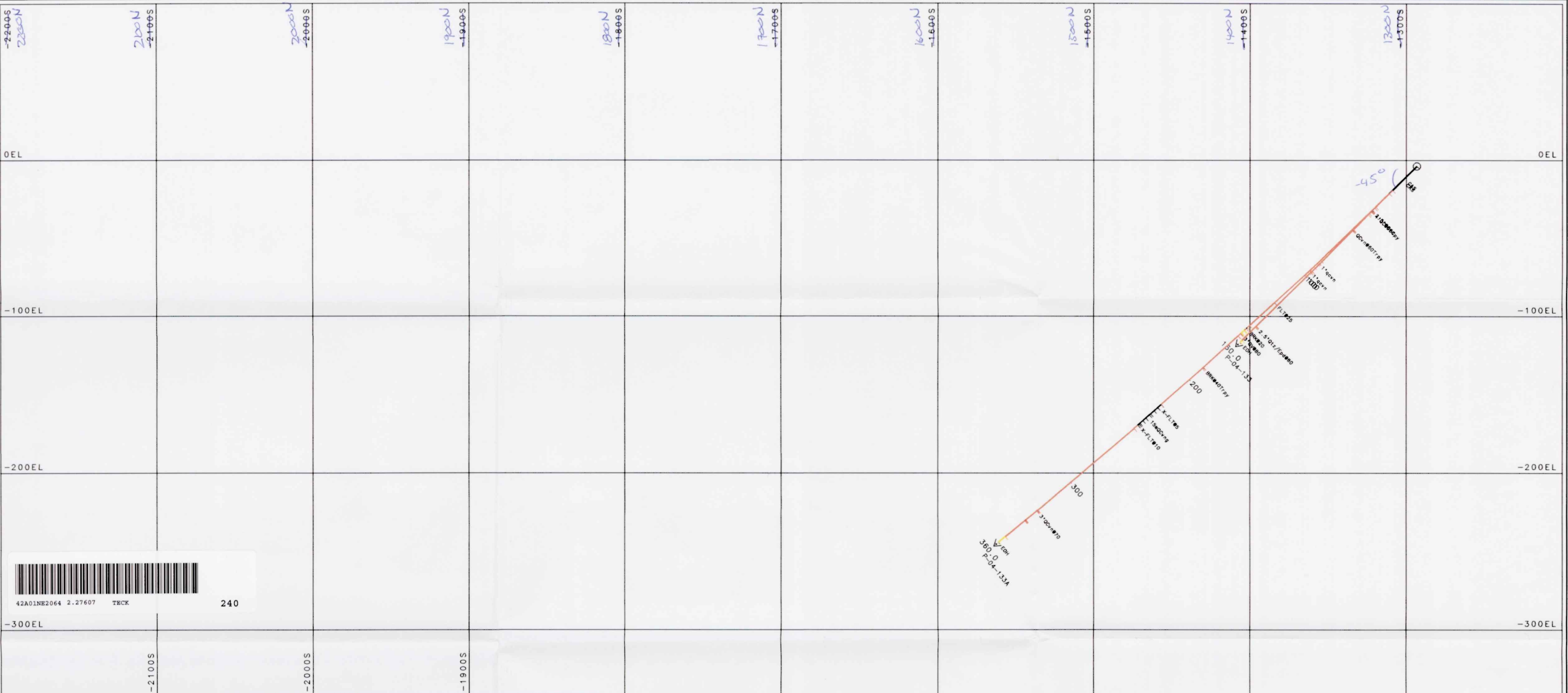
LEGEND

- BASIC SYENITE
- CONGLOMERATE
- DYKE
- FELSIC SYENITE
- GREYWACKE
- PORPHYRY
- TRACHYTE
- TUFF

S. Carmichael
May 4/04

DATE	30 APR 4	DRAWN	DESIGNED
DWG No		DATAMINE	CHECKED
			APPROVED





Kirkland Lake Gold **2.27607** LEGEND

KIRKLAND LAKE OPERATION
Section looking 237°30'

SECT. 28+00W Far:100 Near:100

2 0 2 4 6 8 Feet
 SCALE 1: 40

DATE	30 APR 4	DRAWN	DESIGNED
DWG No		DATAMINE	CHECKED
			APPROVED

S. Carmichael
 May 4/04





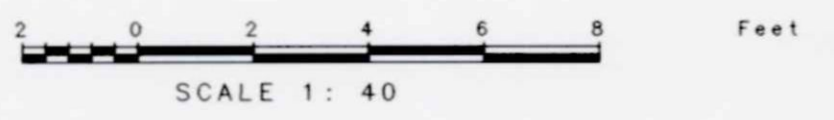
42A01NE2064 2.27607 TECK 250

Kirkland Lake Gold **2.27607**

KIRKLAND LAKE OPERATION

Section looking 237° 30'

SECT. 26+00W Far:100 Near:100



LEGEND

- BASIC SYENITE
- CONGLOMERATE
- DYKE
- FELSIC SYENITE
- GREYWACKE
- PORPHYRY
- TRACHYTE
- TUFF

S. Co. Michael May 4/04

DATE	30 APR 4	DRAWN	DESIGNED	
DWG No		DATAMINE	CHECKED	
			APPROVED	