



42A01SE0033 33 TECK

DIAMOND DRILLING

010

TOWNSHIP: TECK

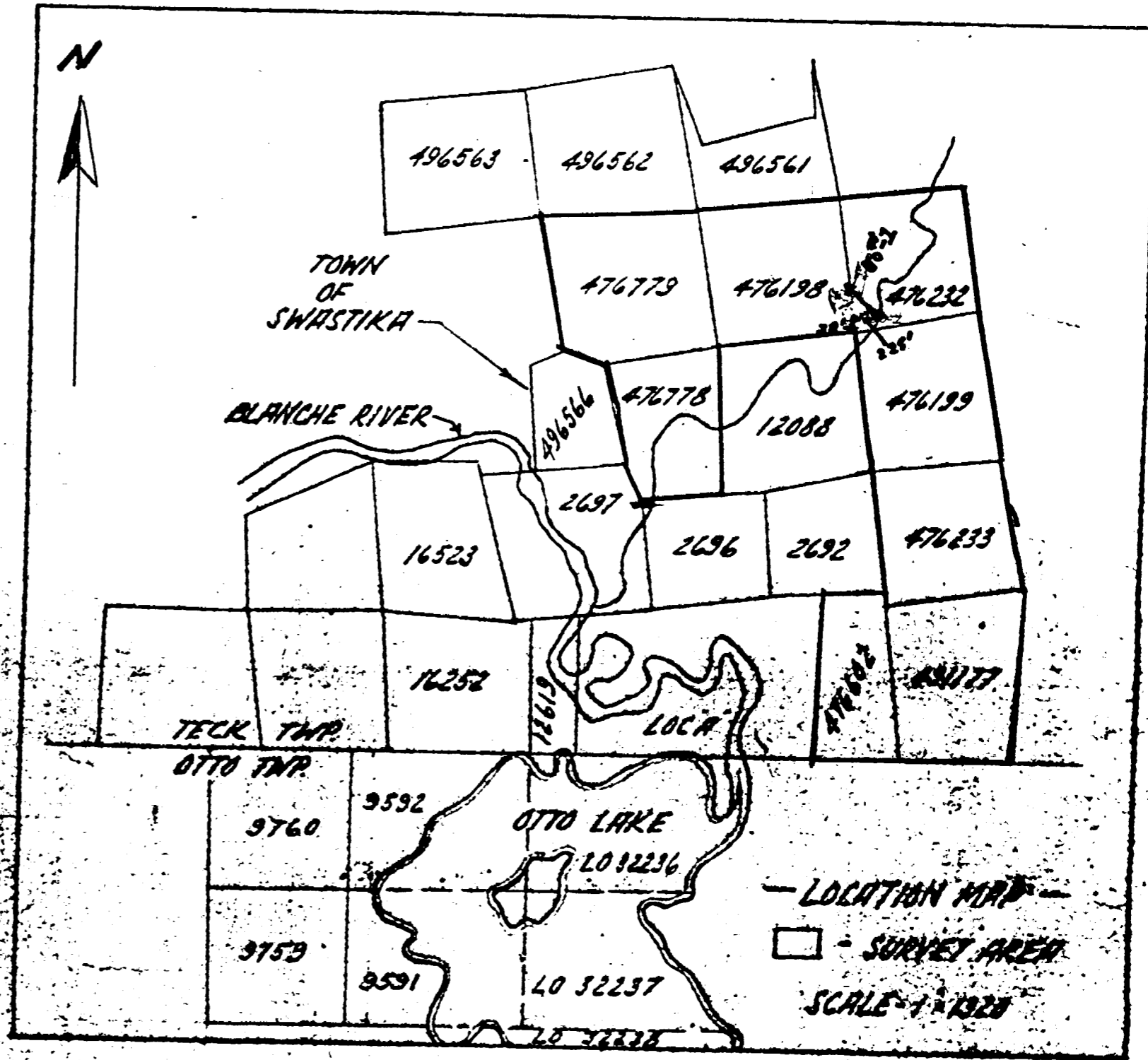
REPORT No.: 33

WORK PERFORMED BY: QUEENSTON GOLD MINES LIMITED

<u>CLAIM No.</u>	<u>HOLE No.</u>	<u>FOOTAGE</u>	<u>DATE</u>	<u>NOTE</u>
L 476232	80-1	819.0	Sept./80	(1) (2)

NOTES: (1) # 210-80  
(2) # 310-80

TECK TWP. #210-80  
QUEENSTON GOLD MINES LTD.





**Diamond  
Drilling  
Log**

Fill in on every page **80-1** Hole No. **1** Page No.

Drilling Company <b>HEATH &amp; SHERWOOD</b>		Collar Elevation <b>SURFACE</b>	Bearing of hole from true North <b>N 60° E</b>	Total Footage <b>240'</b>	Dip of Hole at Collar <b>-60</b>	Location of hole in relation to a fixed point on the claim. <b>38' North along claim line from #3 Post of Claim L 476 232 AND 225' EAST.</b>	Map Reference No.	Claim No. <b>L 476 232</b>
Date Hole Started <b>SEPT. 4, 1980</b>	Date Completed <b>SEPT. 8, 1980</b>	Date Logged <b>8/9/80</b>	Logged by <b>J. G. WILLIAMS</b>		Ft.		Location (Twp., Lot, Con. or Lat. and Long.) <b>TECK TWP.</b>	
Exploration Co., Owner or Optionee <b>STEER ROCK IRON MINES LTD.</b>		Date Submitted <b>8/9/80</b>	Submitted by (Signature) <i>J. Williams</i>		Ft.			
				Ft.	Property Name <b>QUEENSTON GOLD MINES</b>			

Footage		Rock Type	Description Colour, grain size, texture, minerals, alteration, etc.	Planar Feature Angle *	Core Specimen Footage †	Your Sample No.	Sample Footage		Sample Length	Assays †	
From	To						From	To			
0	64'	CASING	OVER BURDEN Boulders, sand, gravel								
64'	136.5'	BASALT	KOMATIITIC GREY GREEN COLOURED ROCK WITH WITH CHLORITE AND SERPENTINE ON IRREGULAR FRACTURES. ROCK IS SLIGHTLY MAGNETIC, SOFT TO MEDIUM HARD. FINE GRAINED								
136.5'	150.5'	DIABASE	CHILLED CONTACT. GRANULAR MEDIUM GRAINED ROCK, HARD. MOTTLED GREY BROWN COLOUR WITH WHITE FELDSPAR GRAINS. SOME BLACK CHLORITE GRAINS. NON-MAGNETIC. GHOSTY BANDING AT 70° TO THE CORE AXIS.								
150.5'	157'	BASALT	AS ABOVE AT 64' TO 136.5'								
157'	162'	DIABASE	AS ABOVE AT 136.5' TO 150.5'								
162'	205.6'	BASALT	AS ABOVE AT 64' TO 136.5'								
205.6'	207.8'	DIABASE	AS ABOVE AT 136.5' TO 150.5'								
207.8'	231'	BASALT	AS ABOVE AT 64' TO 136.5'								
231'	240'	SYENITE PORPHYRY	SHARP CONTACT AT 45° TO THE CORE AXIS. VERY HARD LIGHT COLOURED ROCK. 1/8" WHITE FELDSPAR PHENOCRYSTS IN PINK AND GREY MATRIX. CHLORITE AND RED FELDSPAR ON FRACTURE PLANES. IRREGULAR QUARTZ VEIN AND STRINGER INTRUSION. SCATTERED FINE GRAINED DISSEMINATED PYRITE. 1/16" CHALCOPYRITE SEAM AT CONTACT. <b>DRILLING CONTINUING.</b>								



Drilling Company <b>Heath &amp; SHERWOOD</b>	Collar Elevation <b>Surface</b>	Bearing of hole from true North <b>N 60° E</b>	Total Footage <b>819'</b>	Dip of Hole at Collar <b>-60</b>	Location of hole in relation to a fixed point on the claim. <b>38' NORTH ALONG CLAIM LINE FROM POST #3 OF CLAIM L 476232 AND 225' EAST</b>	Map Reference No.	Claim No. <b>L 476232</b>
Date Hole Started <b>SEPT. 8, 1980</b>	Date Completed <b>SEPT. 23, 1980</b>	Date Logged <b>Sept. 23/80</b>	Logged by <b>J. G. WILLARS</b>	250 Ft. <b>-53</b>		Location (Twp., Lot, Con. or Lat. and Long.) <b>TECK TWP.</b>	Property Name <b>QUEENSTON GOLD MINES</b>
Exploration Co., Owner or Outleaser <b>STEEP ROCK IRON MINES LTD.</b>	Date Submitted <b>Sept 29/80</b>	Submitted by (Signature) <i>J. G. Willars</i>	500 Ft. <b>-48</b>				
			750 Ft. <b>-44.5</b>				

Footage		Rock Type	Description Colour, grain size, texture, minerals, alteration, etc.	Planar Feature Angle *	Core Specimen Footage †	Your Sample No.	Sample Footage		Sample Length	Assays †
From	To						From	To		
240'	312'	Syenite Porphyry	As Page 1 231' to 240' CONTINUATION							
312'	486.5'	GESALT	TYPICAL AS ABOVE AT 64' to 136.5' BUT INTER-BEDDED WITH ALTERED SEDIMENTS. FROM 378'-431' WELL BANNED AT 45° PURPLE TO GREEN, FINE GRAINED TRACHYTES. WITH FINE GRAINED PYRITE. CONTACT AT 15°							
486.5'	504.5'	SEDIMENTS	GRITS & greywacke interbedded at 60° plus NARROW lit-par-lit Porphyry sections							
504.5'	518.5'	Syenite Porphyry	Very HARD 1/8" FELDSPAR PHENOCRYSTS PINK-GREY MATRIX LOWER CONTACT AT 60° SPARSE FINE GRAINED PYRITE.							
518.5'	527.8'	CARBONATE	HARD, GREEN TO BROWN ROCK CONTAINING QUARTZ STRAINERS Well banded at 90° to LOW AXIS. SPARSE PYRITE.							
527.8'	541'	Syenite Porphyry	Very hard brown Porphyry rock WITH very fine grained disseminated pyrite							
541'	575'	CARBONATE	AS ABOVE AT 518.5'-527.8' BANNED AT 45° SPARSE FINE GRAINED PYRITE.							
575'	638'	SEDIMENTS	DARK GREY, GREEN TO BROWN TO PURPLE IN PART WELL BANNED AT 60°. NARROW (2" TO 6") BANDS OF SUBROUND PEBBLE FRAGMENTALS. AT 571.6' 615' SHARP SECTIONS ANGULAR FRAGMENTALS. SOME INTER BEDDED COARSE GRAINED FRAGMENTALS. 621'-638' GREYWACKE.							
638'	819'	SEDIMENTS	ALTERED MEDIUM HARD ROCK. GHOSTLY 30° BANDING PEBBLES UP TO 1/2". COLOUR BLACK TO GREEN TO RED BROWN & PURPLE. PEBBLES FRACTURED AND CEMENTED ALSO. WHITE QUARTZ INTRUSION MOSTLY AT 45°							
			OF HOLE							

N.B. PAGE 1 DIABASE INCORRECT. CHANGE TO LAMPROPHYRE.