



42A01SE0048 21 TECK

010

Diamond Drilling

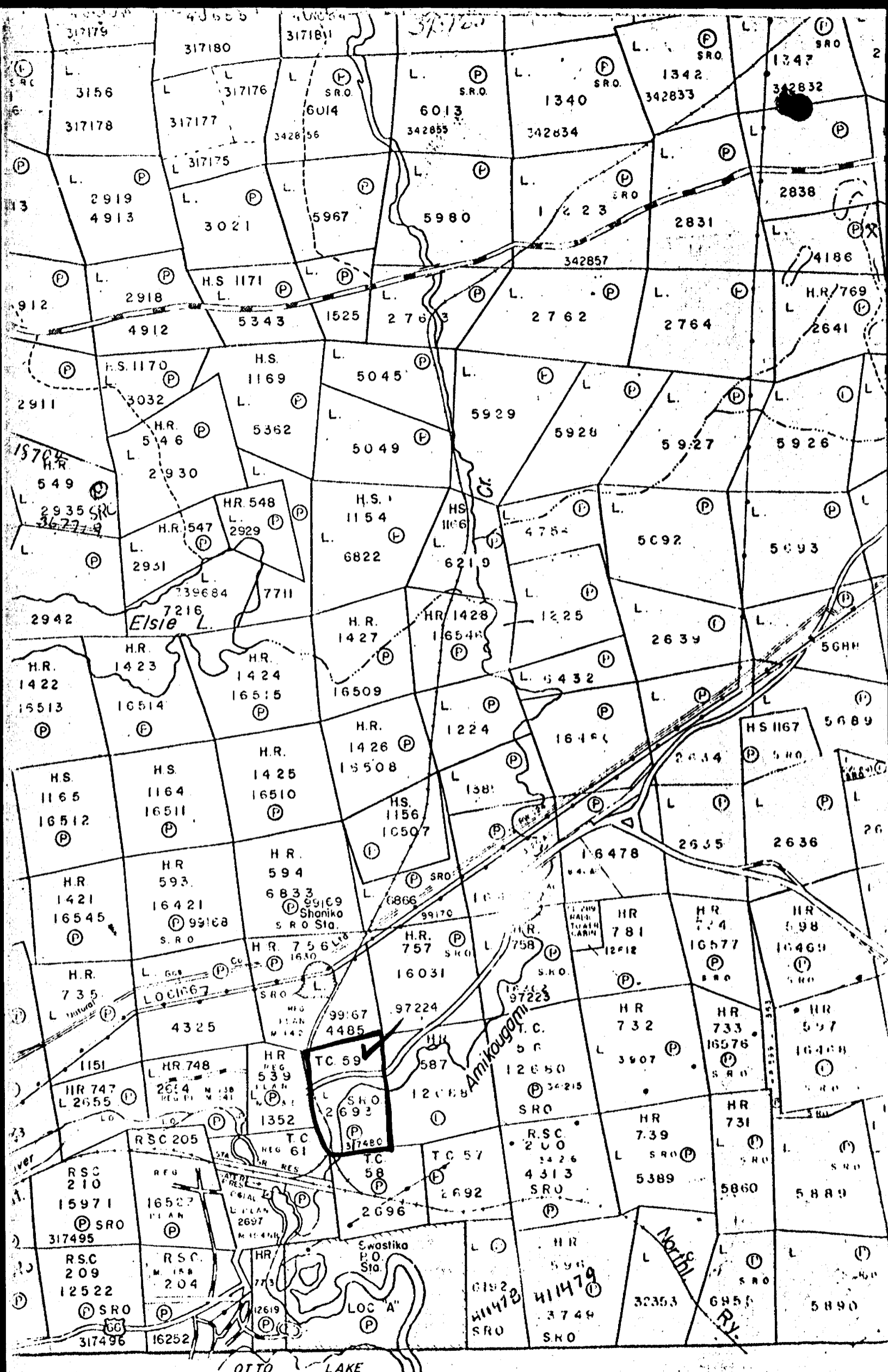
Township of Teck

Report NO: 21

Work performed by: Gateford Mines Limited

Claim NO	Hole NO	Footage	Date	Note
L 317480	G-74-1A	157'	Dec/74	(1)

Notes: (1) #348-74



Teck Twp

Otto Twp.

348-74

TECK TWP

Gateford Miner Ltd.

Assessment Drilling

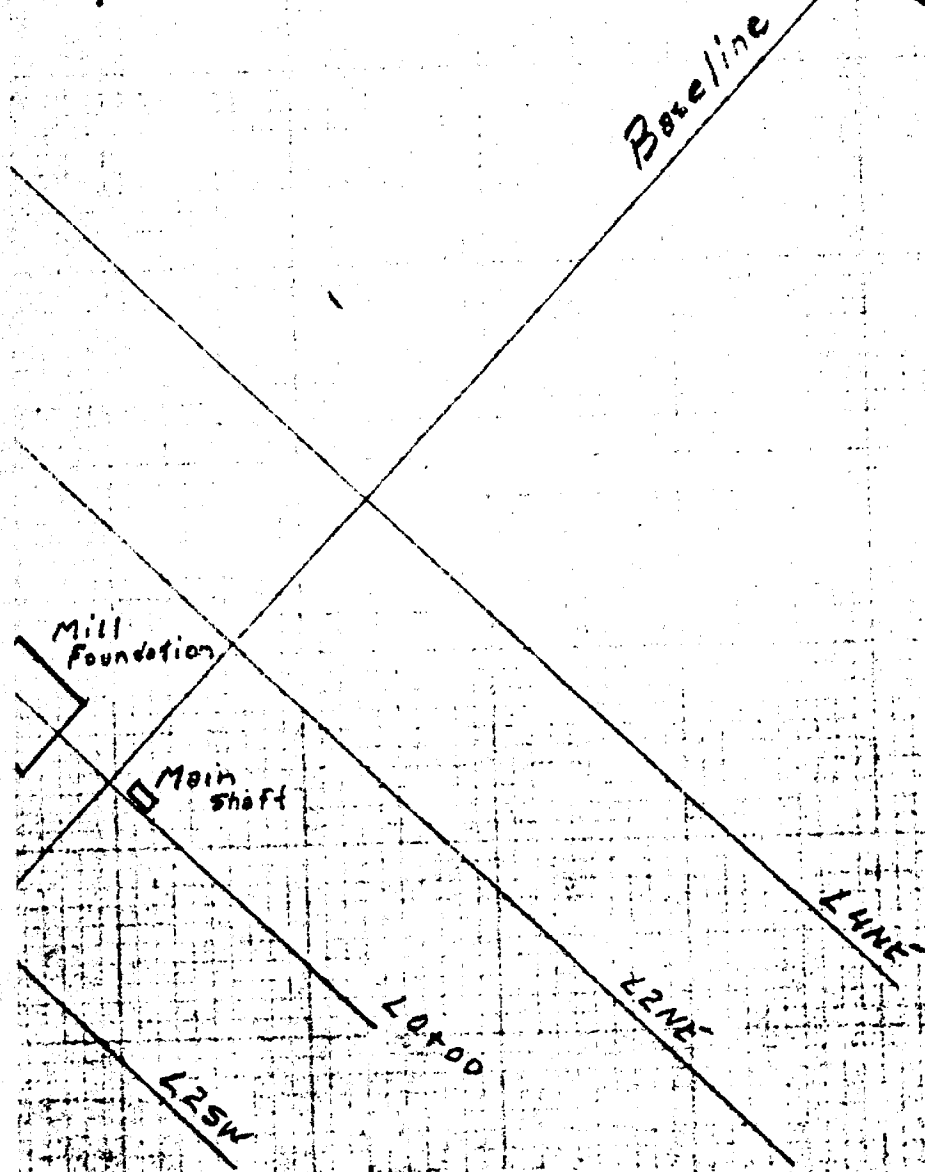
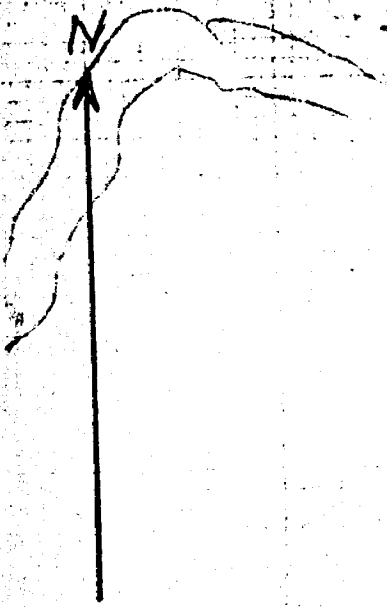
DDH G74-1A

1" = 200' Dec. 1974

Teck Township



H. G. Harper

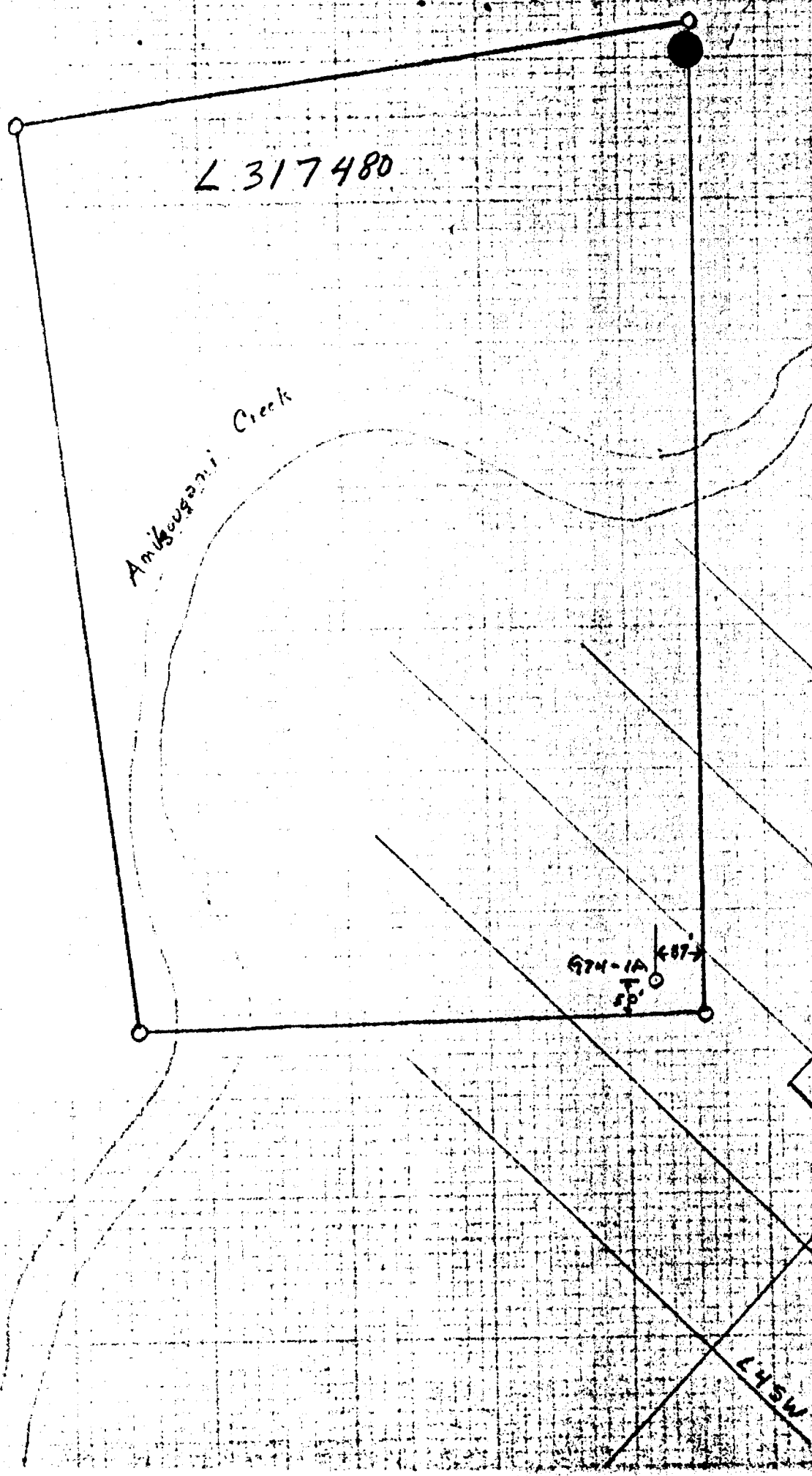


L 317480

Amikouganii Creek

974-1A
SP.
487

MSH 7



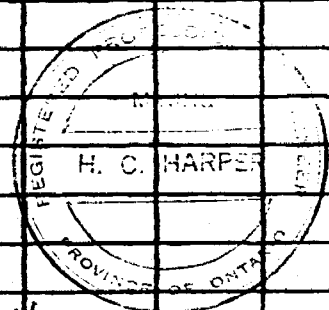
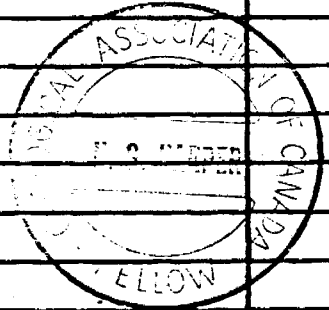
PROPERTY: *Gateford Mines Ltd*

HOLE NO. *674-1A*

Sheet 2 of 2

LATITUDE :	BEARING:	DIP:	STARTED:	COMPLETED:	
DEPARTURE:	V.D.	H.D.	DRILLED BY:		DEPTH:
ELEVATION:	LOCATION:				LOGGED BY:

FOOTAGE		SAMPLE FOOTAGES	SAMPLE No.	WIDTH FT.	ASSAY DATA			
					Cu	Ag		
<i>126.8 - 128.5</i>	<i>Syenite + veining</i>	<i>126.8 - 129.5</i>	<i>2170</i>	<i>2.7</i>				
<i>134.5</i>	<i>Carbonaceous Greenstone mixture</i>							
<i>153.5</i>	<i>Altered Basic Syenite</i>	<i>134.5 - 138</i>	<i>2171</i>	<i>3.5</i>				
		<i>138 - 142.5</i>	<i>2172</i>	<i>4.5</i>				
		<i>142.5 - 148</i>	<i>2173</i>	<i>5.5</i>				
		<i>148 - 153.5</i>	<i>2174</i>	<i>5.5</i>				
<i>157</i>	<i>Altered Dark Rock - possibly carbonated lava</i>							
	<i>END OF HOLE</i>							



H. C. Harper

Teck Township
 PROPERTY: Gateford Mines Ltd.
 LATITUDE: L 0427 SW BEARING: North DIP: -45° STARTED: Dec 4/74 COMPLETED: Dec 10/74
 DEPARTURE: 4+10 N V.D. H.D. DRILLED BY: E.R. Purcher Drilling - Cobalt DEPTH: 157
 ELEVATION: LOCATION: Claim L 317480 - 80' northwest of # 2 Post AXT LOGGED BY: Harper.

FOOTAGE	DESCRIPTION	SAMPLE FOOTAGES	SAMPLE No.	WIDTH FT.	ASSAY DATA			
					Gr	Au		
0-16	Casing							
21	Broken Ground - altered, siliceous, veined, pyrite only 3 1/2' of core over 5 feet	16 - 21	2153	5.0				
47.5	Green Carbonate Zone - veined, low mineral varve-like core + recovery							
	Qtz Vein - brickred, very silic, minor opal, MoS ₂	21 - 25.3	2154	4.3				
	25.3' - water seam	25.3 - 30	2155	4.7				
	36' - rusty water seam	30 - 35	2156	5.0				
		35 - 38	2157	3.0				
		38 - 44	2158	6.0				
		44 - 47.5	2159	3.5				
71	Pink Syenite - highly siliceous, py, qtz veinlets py BX, dark streaks	47.5 - 51	2160	3.5				
	BX - well mineralized, lost core in green carb	51 - 56	2161	5.0				
	as above	56 - 61.6	2162	5.6				
	fault zone? BX - lost core	61.6 - 67	2163	5.4				
86	Green Carbonate Sect ⁿ - fault?	67 - 71	2164	4.0				
	increasing carbonate content	71 - 72	2165	1.0				
	green carbonate + talc zone	72 - 76	2166	4.0				
126.8	Talc-Carbonate Zone - soft block, irregular poor veining - neg mineral	76 - 80.5	2167	4.5				
	99 - 101.5 BX Zone - pink qtz vein	80.5 - 86	2168	5.5				
		99 - 101.5	2169	2.5				