

DIAMOND DRILLING



42A01SE0078 19 GRENFELL

010

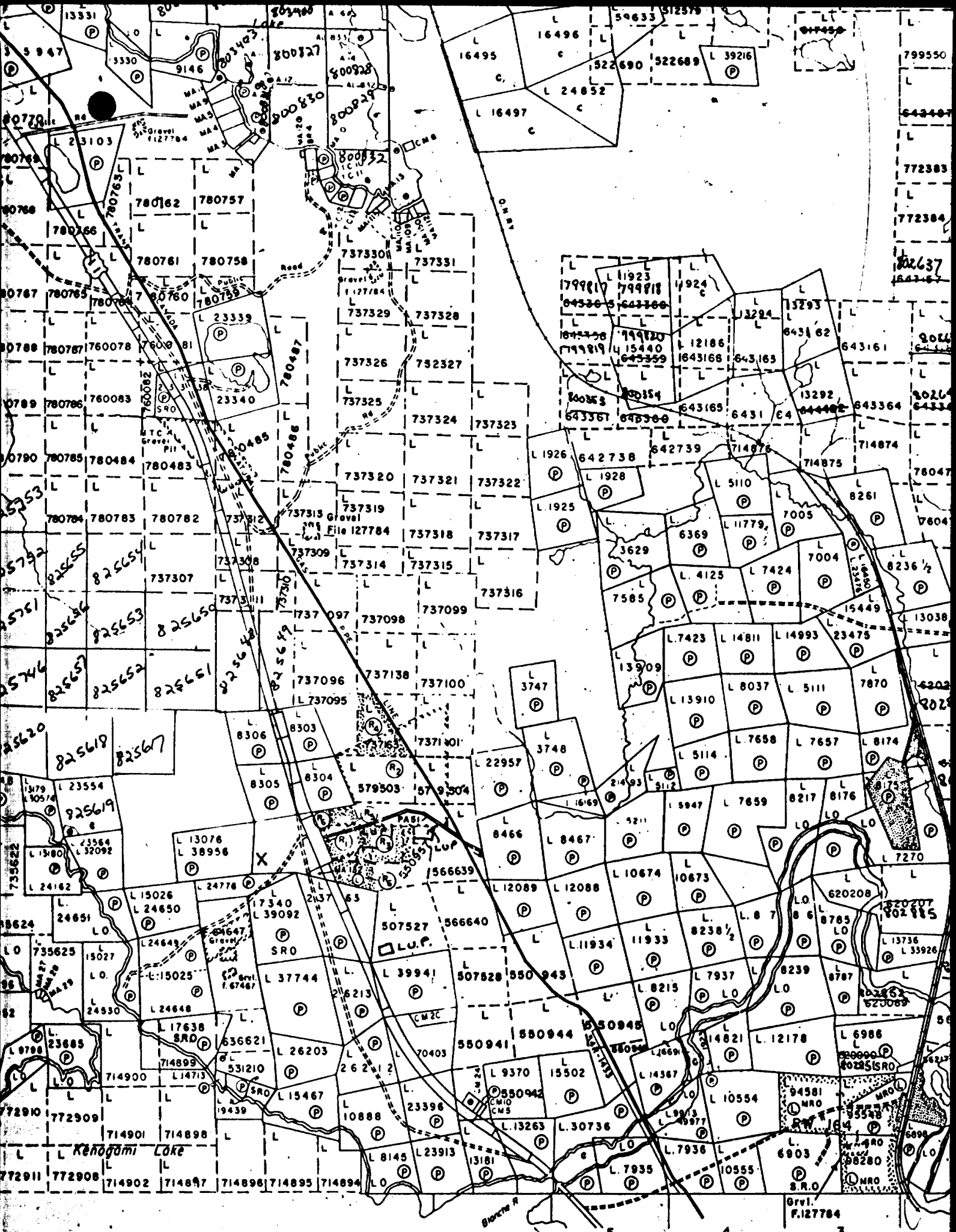
TOWNSHIP: Grenfell

REPORT No.: 19

WORK PERFORMED BY: Orcana Resources Ltd.

<u>CLAIM No.</u>	<u>HOLE No.</u>	<u>FOOTAGE</u>	<u>DATE</u>	<u>NOTE</u>
L 550941	84-1	364.5	Aug/84	(1)

NOTES: (1) #356-84



Grenfell
Twp M351

EBY TWP. M-345

5 4 3

OVERBURDEN DRILL HOLE 84-1

'BQ' size core

LOCATION: GRENFELL TWP.
Claim 550941

LATITUDE: 8+00 E BEARING: S 40° W
DEPARTURE: 9+50 N ANGLE DIP: -48°

STARTED: 9 Aug. '84
FINISHED: 14 Aug. '84
LOGGED BY: J. C. Archibald

FROM	TO	REMARKS	SAMPLE NO	SAMPLE LENGTH	Au Oz/ton	d
0	22.0	<u>CASING</u> - Overburden				
22.0	364.5	<u>METAVOLCANICS</u> - Intermediate to basic, massive. Basalts, andesites to medium grained diorites - undifferentiated. 22.0 - 100.0 diorite like, with specks of chlorite and leucoxene throughout. Some bleaching along fracture selvages with odd carbonate stringer @ 50° to core axis. Chlorite filled slips. 63.0 - 64.0 <u>Sample</u> @ 63.0°, 1/2" quartz-carbonate stringer, odd speck disseminated pyrite. 65.0 - 67.0, broken core 73.0 - 93.0, increased flow banding and brecciation. Marbled flow @ 15° to C.A. 83.0 - 85.0, flow banded with 1/2" carbonate stringers. Specks pyrite & pyrrhotite disseminated through core. Stringers cut core @ 45° to core axis.	84-1-1	1.0'	Nil	
			84-1-2	2.0'	Nil	

John C. Archibald

OVERBURDEN DRILL HOLE 84-1

LOCATION: **GRENFELL TWP.**
Claim 550941

LATITUDE:
DEPARTURE:

BEARING:
ANGLE DIP:

STARTED:
FINISHED:
LOGGED BY:

FROM	TO	REMARKS	SAMPLE NO	SAMPLE LENGTH	Au oz/ton
		93.0 - 100.0, more porphyritic, fine grain phase of basic volcanics, less leucoxene.			
		96.0 - 98.0, brecciated diorite with carb/chlorite filling @ 45° to 80° to core axis (tension fracture filling) plus specks dissem. pyrite.	84-1-3	2.0'	Nil
		100.0 - 149.0, very leucoxene rich in fine grained dark grey groundmass, more chloritic rich odd speck pyrite disseminated throughout.			
		104.0 - 107.0, rusty, altered, ankeritic with carbonate filling @ all angles, less than 1% disseminated pyrite.	84-1-4	3.0'	Nil
		111.0 - 114.0, carbonate fracture filling at all angles, flow banded @ 30° to C.A.	84-1-5	3.0'	Nil
		118.0 - 124.0, increased bleaching alteration in breccia.			
		120.0 - 127.0, rusty quartz-carb. fracture filling @ 121.0', brecciated.	84-1-6	7.0'	Nil
		125.0 - 127.0, harder, odd speck dissem. pyrite			
		137.0 - 139.0, carbonate fracture filling in brecciated volcanics.	84-1-7	2.0'	Nil

OVERBURDEN DRILL HOLE 84-1

LOCATION: **GRENFELL TWP.**
Claim 550941

LATITUDE:
DEPARTURE:

BEARING:
ANGLE DIP:

STARTED:
FINISHED:
LOGGED BY:

FROM	TO	REMARKS	SAMPLE NO	SAMPLE LENGTH	Au oz/ton
		<p>© 138.5, 4" mud seam, ankeritic, chlorite rich.</p> <p>140.0 - 142.0, carbonated tension fract. every 1/2" © 70° to C.A. Odd slip pyrite filled.</p> <p>149.0 - 159.0, altered, spotted with light/dark chlorite and leucoxene rich laminations.</p> <p>151.0 - 153.0, carbonate fracture filling, mainly at 70° to core axis.</p> <p>159.0 - 200.0, dark grey-green, homogeneous with carbonate stringers at all angles.</p> <p>162.0 - 163.5, rusty brown, carbonate fracture filling at 45° to C.A. up to 2" wide. Poorly mineralized.</p> <p>© 169.0, 2" flow banding at 30° to C.A.</p> <p>© 173.0, 1" " "</p> <p>© 176.0, 4" " "</p> <p>177.0 - 178.0, rusty, carbonate stringers around inclusions/flows at 50° to C.A.</p> <p>196.0 - 197.0, brecciated.</p> <p>200.0 - 209.0, rusty, carbonate rich with odd bleb and stringer of pyrite at 30° to 40° to core axis.</p>	84-1-8	2.0'	.005
			84-1-9	2.0'	Nil
			84-1-10	1.5'	Nil
			84-1-11	1.0'	Nil

OVERBURDEN DRILL HOLE 84-1

LOCATION: **GRENFELL TWP.
Claim 550941**

LATITUDE: _____ BEARING: _____ STARTED: _____
 DEPARTURE: _____ ANGLE DIP: _____ FINISHED: _____
 LOGGED BY: _____

FROM	TO	REMARKS	SAMPLE NO	SAMPLE LENGTH	Au oz/ton
		200.0 - 204.0 <u>Sample</u> 204.0', 1/2" stringer of pyrite.	84-1-12	4.0'	Nil
		209.0 - 250.0, basic, flow banded, fine grained, green-grey, odd carbonate stringer at 60° to 80° to core axis. Leucoxene rich sections.			
		216.0 - 218.0, flow banded at 10° to core axis, carbonated, marbled, odd speck pyrite.	84-1-13	2.0'	Nil
		220.0 - 222.0, carbonate rich flow banding with odd speck disseminated pyrite throughout (less than 2% pyrite).	84-1-14	2.0'	Nil
		229.5 - 232.0, carbonate stringers at 229.5' (1") at 50° to C.A. then flow banded. Dissem. pyrite along chloritic slips.	84-1-15	2.5'	Nil
		233.0 - 234.0, 3" carbonate stringer in brecciated rusty volcanic @ 45° to C.A.	84-1-16	1.0'	.002
		245.0 - 247.0, 3" carbonate stringer at 45° to C.A., dissem. pyrite filling tension fractures.	84-1-17	2.0'	.002

OVERBURDEN DRILL HOLE 84-1

LOCATION: **GRENFELL TWP.**
Claim 550941

LATITUDE:
DEPARTURE:

BEARING:
ANGLE DIP:

STARTED:
FINISHED:
LOGGED BY:

FROM	TO	REMARKS	SAMPLE NO	SAMPLE LENGTH	Au. oz/ton
		250.0 - 272.0 <u>Carbonate Stringer Zone</u> increased carbonate fracture filling at all angles but mainly 45° to C.A.			
		250.0 - 253.0, quartz, carbonate, brecciated (tension fracture filling) and flow banding (6") at 252.0', less than 1% disseminated pyrite along carbonate stringers.	84-1-18	3.0'	Nil
		255.0 - 258.0, tension fractures at 45° to C.A. with carbonate filling.	84-1-19	3.0'	Nil
		258.0 - 259.0, massive, more siliceous, ankeritic, i.e. quartz-carbonate stringers with up to 10% pyrite.	84-1-20	1.0'	.002
		263.5 - 264.5, 6" quartz-carbonate breccia @ 80° to C.A., odd speck pyrite.	84-1-21	1.0'	Nil
		269.0 - 270.0, 3" quartz carbonate fracture filling/brecciated @ 45° to C.A.	84-1-22	1.0'	Nil
		272.0 - 289.0, becomes more homogeneous, brown, rusty, less carbonate filling @ 35° C.A. some disseminated pyrite in flow banding			
		282.0 - 283.0, 2" quartz-carbonate stringer at 85° to core axis, odd speck pyrite.	84-1-23	1.0'	Nil

OVERBURDEN DRILL HOLE 84-1

LOCATION: **GRENFELL TWP.**
Claim 550941

LATITUDE: _____ BEARING: _____ STARTED: _____
 DEPARTURE: _____ ANGLE DIP: _____ FINISHED: _____
 LOGGED BY: _____

FROM	TO	REMARKS	SAMPLE NO	SAMPLE LENGTH	Au. oz/ton
		288.0 - 290.0, 3" quartz-carbonate stringer in rusty flow banded volcanic at 80° to core axis. @ 288.0 - flow banding @ 15° to C.A. @ 289.0 - 3" quartz-carbonate stringer at 55° to C.A.	84-1-24	2.0'	Nil
		289.0 - 323.0, increasingly fractured, filled with chlorite @ 50° to core axis.			
		292.5 - 294.5, flow banded with chlorite in slips/tension fractures @ 50° to C.A. less than 1% disseminated specks pyrite throughout.	84-1-25	2.0'	Nil
		308.0 - 309.0, 2" quartz-carbonate stringers at 60° to core axis with disseminated † 20% pyrite.	84-1-26	1.0'	.005
		323.0 - 350.0, basic, increased flow banding, dioritic, chlorite slips and carbonate stringers (tension filling) @ 45° to C.A.			
		330.0 - 331.0, 1" carbonate stringer at 45° to C.A., poorly mineralized.	84-1-27	1.0'	.002
		334.0 - 335.0, chlorite and carbonate rich stringer at 45° with dissem pyrite.	84-1-28	1.0'	Nil
		348.0 - 350.0, quartz-carb. fracture filling at 10° to C.A.	84-1-29	2.0'	Nil

DIAMOND DRILL HOLE 84-1

LOCATION: **GRENFELL TWP.
Claim 550941**

LATITUDE:
DEPARTURE:

BEARING:
ANGLE DIP:

STARTED:
FINISHED:
LOGGED BY:

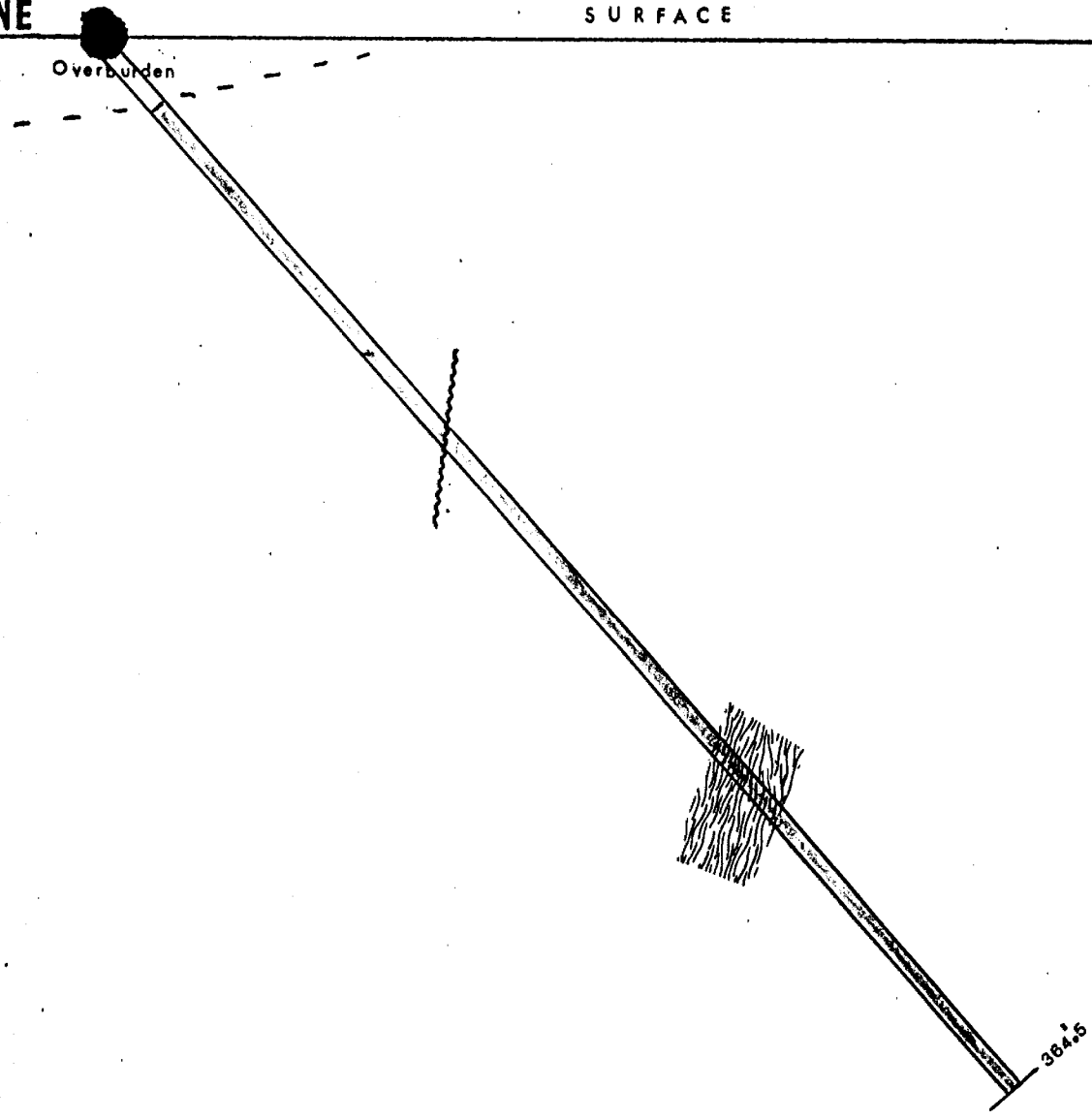
FROM	TO	REMARKS	SAMPLE NO	SAMPLE LENGTH	Au. oz/ton		
		<p>350.0 - 364.5, dark green, odd carbonate stringer or tension fracture filling. After 362.0, core blocky, broken, with rusty carbonate stringers at 30° to 45° to core axis.</p> <p>362.0 - 364.5, rusty carbonate stringers.</p>					
	364.5	<p><u>END OF HOLE</u></p> <p>Casing pulled, core delivered to - Kirkland Core Storage Library.</p>					
			84-1-30	2.5'	Nil		

NE

SURFACE

SW

Overburden



LEGEND

- Vein
- Sulphides
- Andesite
- Feldspar porphyry
- Carbonate Stringer Zone
- Fault

GRENFELL TWP.
ORCANA RESOURCES LIMITED
DIAMOND DRILL SECTION HOLE 84-1

SCALE
1 INCH = 50 FEET

W8408-356



42A01SE0078 19 GRENFELL

Name and Postal Address of Recorded Holder
ORCANA RESOURCES LIMITED **T-1032**

P. O. Box 162, Toronto-Dominion Centre, Toronto, Ontario. M5K 1H6

Summary of Work Performance and Distribution of Credits

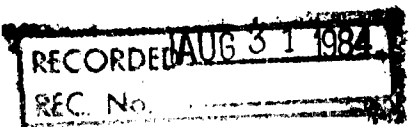
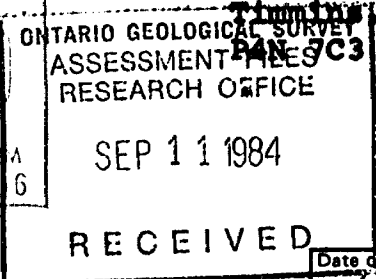
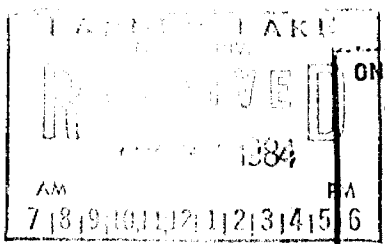
Total Work Days Cr. claimed 378.5	Mining Claim			Mining Claim			Mining Claim		
	Prefix	Number	Work Days Cr.	Prefix	Number	Work Days Cr.	Prefix	Number	Work Days Cr.
for Performance of the following work. (Check one only) <input type="checkbox"/> Manual Work <input type="checkbox"/> Shaft Sinking Drifting or other Lateral Work. <input type="checkbox"/> Compressed Air, other Power driven or mechanical equip. <input type="checkbox"/> Power Stripping <input checked="" type="checkbox"/> Diamond or other Core drilling <input type="checkbox"/> Land Survey	L	579503	20	L	550945	20			
		579504	20		550946	20			
		566639	20		550957	57.2			
		566640	60						
		550941	40						
		550942	40						
		550943	40						
	550944	41.3							

All the work was performed on Mining Claim(s): **L 550941**

Required Information eg: type of equipment, Names, Addresses, etc. (See Table Below)

The above assessment credit days includes **364.5 feet** of drilling using **BQ size core plus 14 credit days** for putting the core in the **Larder Lake Diamond Drill Core Library**.

The diamond driller was - **R. Todorovich**
R.R. 2, McLean Drive
Timmins, Ontario



Date of Report: **14 Aug 1984** Recorded Holder or Agent (Signature): *CW Archibald*

Certification Verifying Report of Work

I hereby certify that I have a personal and intimate knowledge of the facts set forth in the Report of Work annexed hereto, having performed the work or witnessed same during and/or after its completion and the annexed report is true.

Name and Postal Address of Person Certifying
C. W. Archibald, 702-100 Adelaide Street West
Toronto, Ontario. M5H 1S3
 Date Certified: **28 August 1984** Certified by (Signature): *CW Archibald*

Table of Information/Attachments Required by the Mining Recorder

Type of Work	Specific information per type	Other information (Common to 2 or more types)	Attachments
Manual Work	Nil	Names and addresses of men who performed manual work/operated equipment, together with dates and hours of employment.	Work Sketch: these are required to show the location and extent of work in relation to the nearest claim post.
Shaft Sinking, Drifting or other Lateral Work			
Compressed air, other power driven or mechanical equip.	Type of equipment	Names and addresses of owner or operator together with dates when drilling/stripping done.	
Power Stripping	Type of equipment and amount expended. Note: Proof of actual cost must be submitted within 30 days of recording.		
Diamond or other core drilling	Signed core log showing; footage, diameter of core, number and angles of holes.		Work Sketch (as above) in duplicate
Land Survey	Name and address of Ontario land surveyer.	Nil	Nil

DIAMOND DRILL CORE RECEIVING FORM

Received from Oreana Resources Inc,

19 boxes of diamond drill core at the Larder Lake

Diamond Drill Core Library.

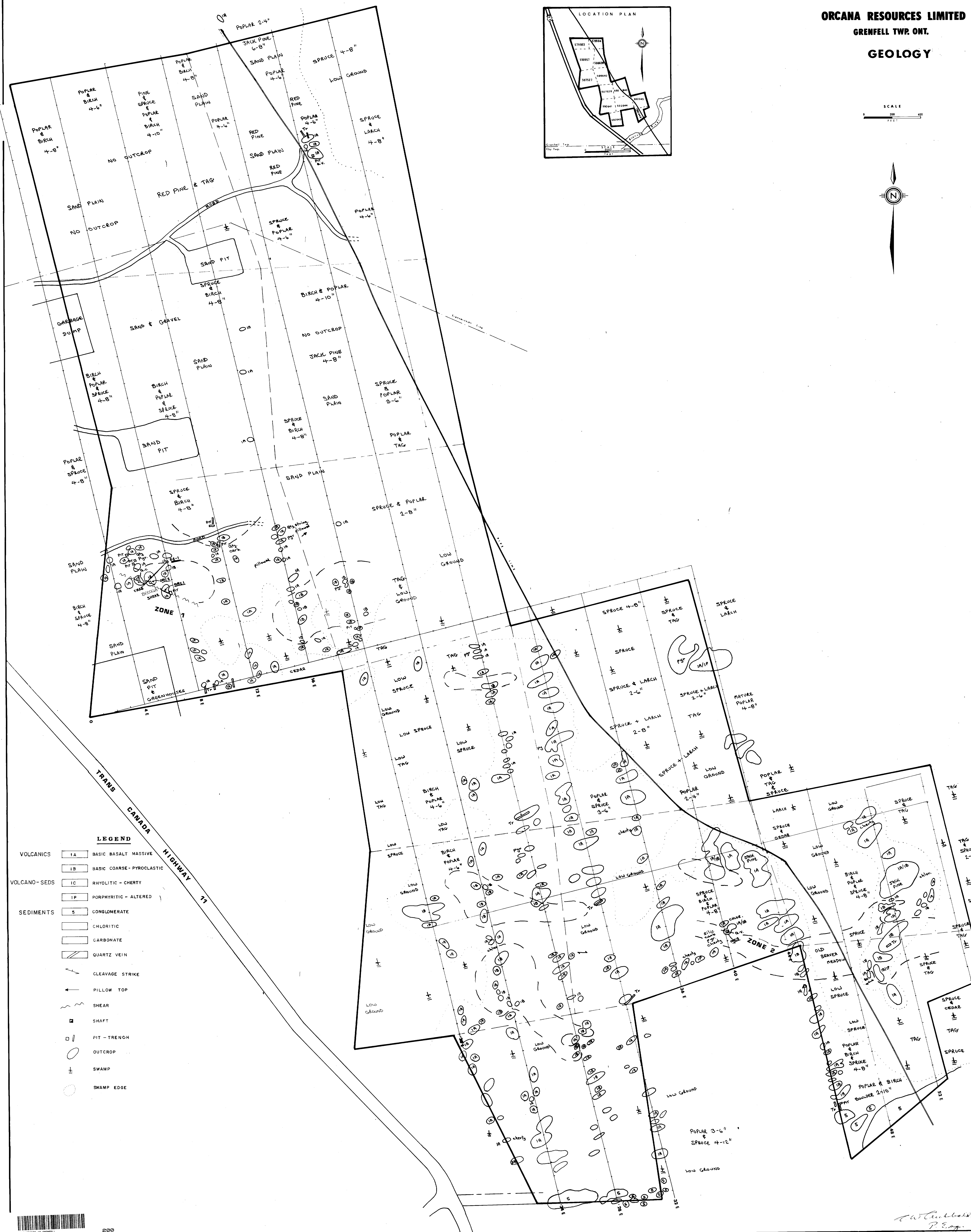
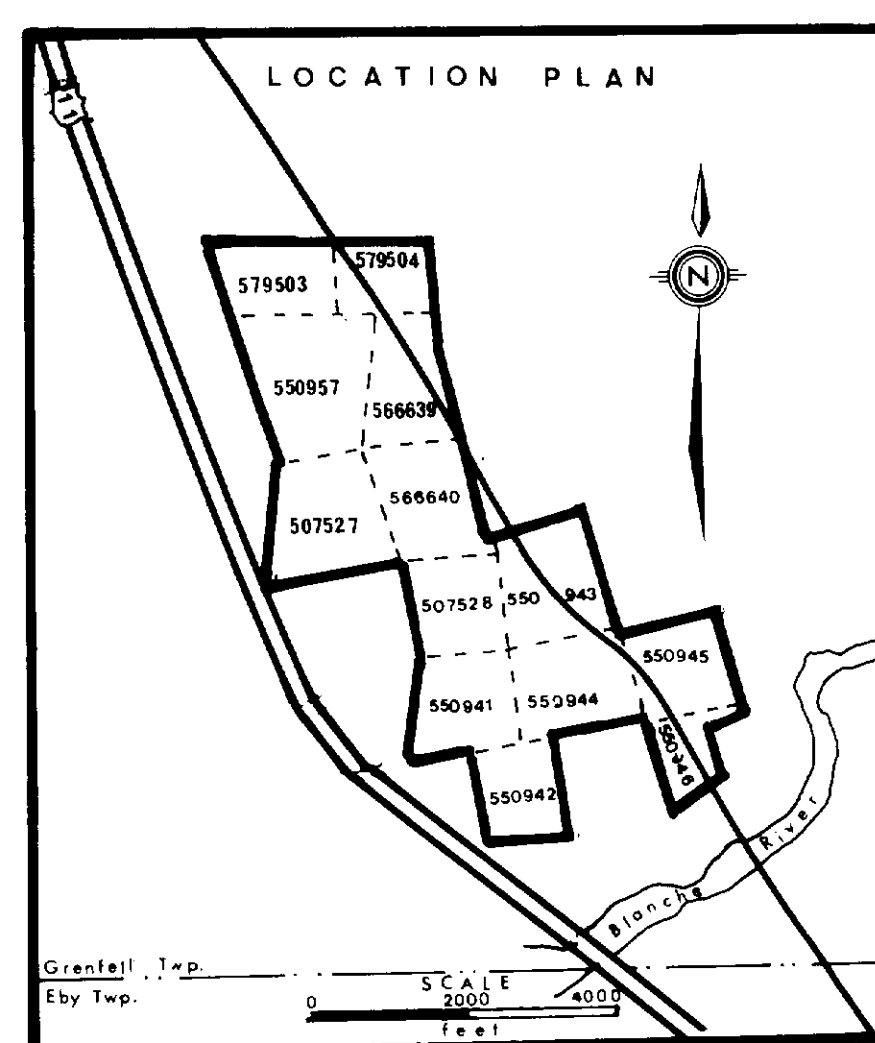
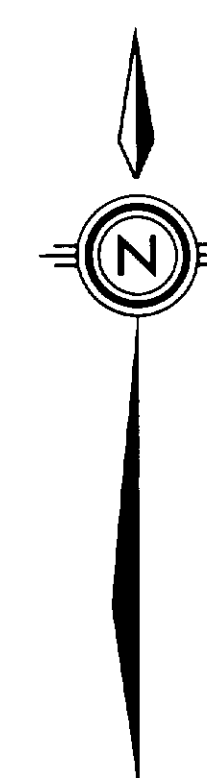
DDH#	BOXES	FEET/METERS	TOWNSHIP	LOG	LOCATION
84-1	19	364.5	Greenfell		

Date Aug 14/84 Received by De H. H. H.

N.B. Core donation may be used for Assessment Credits under the Mining Act at a rate of 1 day for every 25 feet of drilling.

GEOLOGY

SCALE
0 200 400
FEET



LEGEND

- | | | |
|--------------|----|--------------------------|
| VOLCANICS | 1A | BASIC BASALT MASSIVE |
| | 1B | BASIC COARSE-PYROCLASTIC |
| VOLCANO-SEDS | 1C | RHYOLITIC - CHERY |
| | 1P | PORPHYRITIC - ALTERED |
| SEDIMENTS | 5 | CONGLOMERATE |
| | | CHLORITIC |
| | | CARBONATE |
| | | QUARTZ VEIN |
| | | CLEAVAGE STRIKE |
| | | PILLOW TOP |
| | | SHEAR |
| | | SHAFT |
| | | PIT - TRENCH |
| | | OUTCROP |
| | | SWAMP |
| | | SWAMP EDGE |

