

Diamond Drilling



42A015E0206 17 EBY

010

Township of EBY

Report NO 17

Work performed by: Patrick Harrington

Claim NO	Hole NO	Footage	Date	Note
L 476738	1	116.0'	July/78	(1)
	2	104.0'	July/78	(1)
	3	100.0	May/79	(2)
	4	<del>225.0</del>	June/80	(3)
	5	327.0	June/80	(3)

872'

Notes:

(1) #149-78

(2) #102-79

(3) #160-80

FRANCIS T. O'CONNOR

DRAWER 730

PHONE 567-5732

KIRKLAND LAKE, ONTARIO P2N 3K1

CANADA



LOT-2  
CONCESSION 6  
CONCESSION 5

LOT-1  
CONCESSION 6  
CONCESSION 5

HYDRO LINE

TRAIL

L-476737

L-511329

L-476739

L-476738

HWY. #11

CONCESSION 5  
CONCESSION 4

LOT 2

CONCESSION 5  
CONCESSION 4

LOT-1

PATRICK HERRINGTON  
66 FORTH STREET  
KIRKLAND LAKE  
ONTARIO

LICENCE # K18623  
SCALE 1" = 660'

July 27/98

Temp

ASU

OT70





EBY TWP.  
#102-79

PATRICK HARRINGTON  
66 FOURTH ST  
KIRKLAND LAKE, ONT  
PHONE 5676673



LOT #2

LOT #1

LOT-1  
CONCESSION 6

6  
5

6  
5

POWER LINE

L-476737

800

L-476739

L-476738  
HOLE #3

3

23

2

CONCESSION 5  
CONCESSION 4

CONCESSION 5  
CON

LOT #1

LIS # K-18623

SCALE 1" = 660'

MAY-19th-1979

LOT # 2  
PATRICK HARRINGTON  
66 FOURTH ST  
KIRKLAND LAKE, ONT.

EBY TWP.



THE MINING ACT - DEPARTMENT OF MINES  
**DIAMOND DRILLING LOG**

Start a new page for every new hole, but fill in top portion of form only on first page for each hole.

FILL IN ON EVERY PAGE

HOLE NO. PAGE NO. 39

DRILLING COMPANY <b>Pat and Martin Harrington</b>		COLLAR ELEVATION	BEARING OF HOLE FROM TRUE NORTH <b>NE</b>	TOTAL FOOTAGE	DIP OF HOLE AT collar <b>50°</b>	LOCATION OF HOLE IN RELATION TO A FIXED POINT ON THE CLAIM <b>Collared same location as 1-77 &amp; 2</b>	MAP REFERENCE NO. <b>Eby</b>	CLAIM NO. <b>39</b>
DATE HOLE STARTED <b>May 12, 1979</b>	DATE COMPLETED <b>May 14, 1979</b>	DATE LOGGED <b>May 15, 1979</b>	LOGGED BY <i>P. Harrington</i>				LOCATION (Tp., Lot, Con. OR Lat. and Long.)	
EXPLORATION CO., OWNER OR OPTIONEE <b>Pat Harrington</b>		DATE SUBMITTED <b>May 16, 1979</b>	SUBMITTED BY (Signature) <b>P. Harrington</b>				PROPERTY NAME <b>Todora</b>	

FOOTAGE FROM	TO	ROCK TYPE	DESCRIPTION Colour, grain size, texture, minerals, alteration, etc.	PLANAR FEATURE ANGLE *	CORE SPECIMEN FOOTAGE †	YOUR SAMPLE NUMBER	SAMPLE FOOTAGE		SAMPLE LENGTH	ASSAYS †		
							FROM	TO				
0	12	Basalt	Greenstone (greyish green, lower greenschist facies, chloritic volcanic (fairly fg), shot through with many q lenses (greyer quartz) and qv (whiter and some more transparent). This "alteration" including carbonatization, forms 30% of the rock and the chloritic (greenstone) host rock forms upwards of 70%, i.e. the remaining lenses on bands in this rock.									
12			5 mm lens of chalcopyrite in a q stringer 3 mm wide									
12	26		Same as 0 to 12									
26	27		Greenstone, more homogeneous									
27	28½		Lost core									
28½	30		Greenstone with fewer qcv									
30	31		Lost core									
31	32½		Greenstone, ground (broken) during drilling									
32½	34		Gnst, fg									
34	35		Lost core									
35	36		fg gnst with 10% qcv									
36			cp 1 cm long in qcv 3 mm wide									
36	37		Lost core									
37	46		cp blebs < 1 cm long in white q stringer 3 mm wide, in mg gnst									

\* For features such as foliation, bedding, schistosity, measured from the long axis of the core.

† Additional credit available. See Assessment Work Regulations.



THE MINING ACT - DEPARTMENT OF MINES  
**DIAMOND DRILLING LOG**

Start a new page for every new hole, but fill in top portion of form only on first page for each hole.

FILL IN ON EVERY PAGE

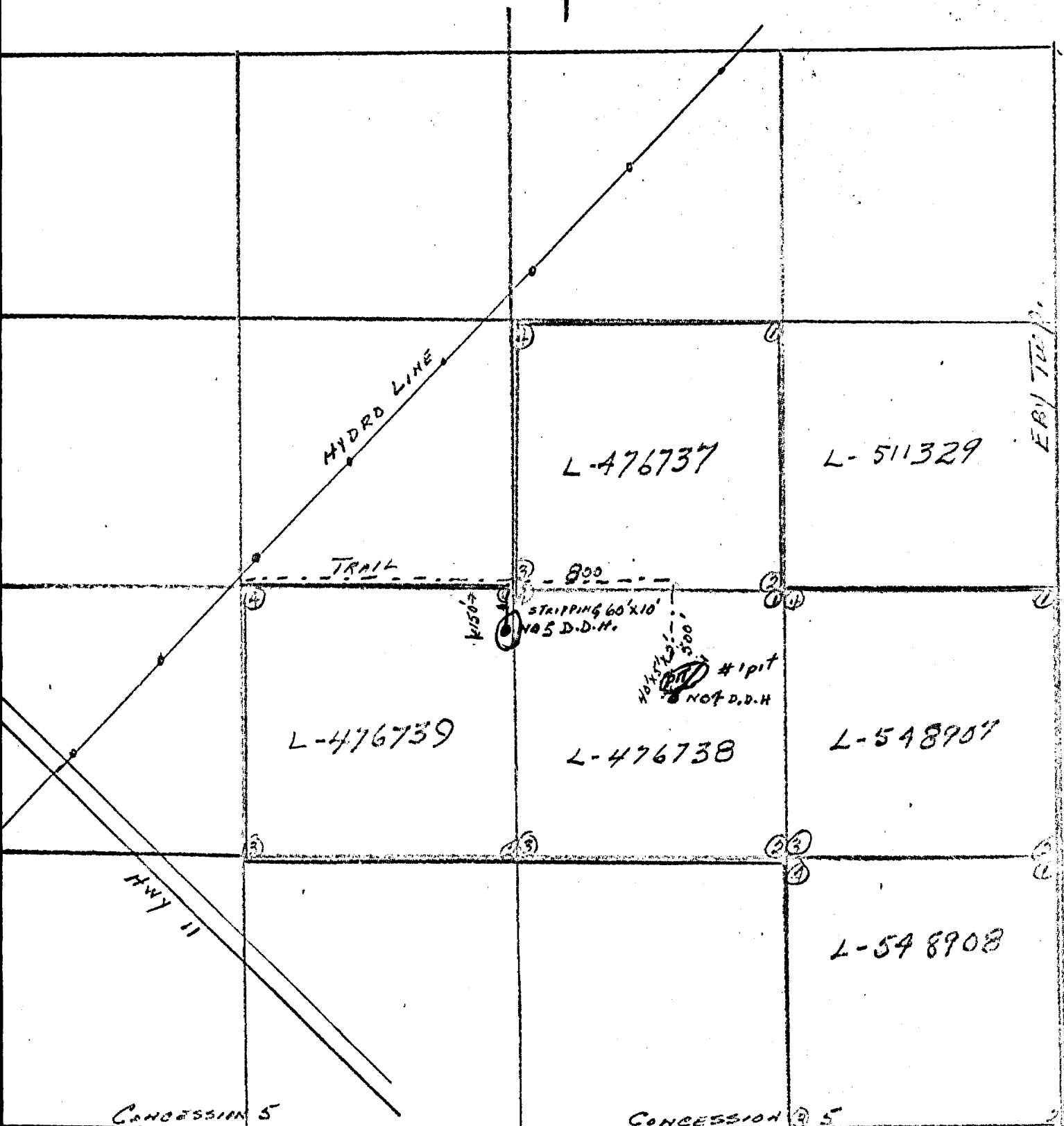
HOLE NO. PAGE NO.

DRILLING COMPANY		COLLAR ELEVATION	BEARING OF HOLE FROM TRUE NORTH	TOTAL FOOTAGE	DIP OF HOLE AT collar	LOCATION OF HOLE IN RELATION TO A FIXED POINT ON THE CLAIM	MAP REFERENCE NO.	CLAIM NO.	
DATE HOLE STARTED	DATE COMPLETED	DATE LOGGED	LOGGED BY <i>P. Harrington</i>		ft		LOCATION (Tp., Lot, Con. OR Lat. and Long.)		
EXPLORATION CO., OWNER OR OPTIONEE		DATE SUBMITTED	SUBMITTED BY (Signature)		ft				
					ft				PROPERTY NAME

FOOTAGE		ROCK TYPE	DESCRIPTION Colour, grain size, texture, minerals, alteration, etc.	PLANAR FEATURE ANGLE *	CORE SPECIMEN FOOTAGE +	YOUR SAMPLE NUMBER	SAMPLE FOOTAGE		SAMPLE LENGTH	ASSAYS +	
FROM	TO						FROM	TO			
47	48		Gnst with buff coloured alteration of wallrocks averaging 3 mm from walls of quartz vein								
48	51		Yellow py cubes lined up parallel to schistosity, which is 30° to core axis, & much silvery metallic bit rub (sample), but also parallel to schistosity therefore silvery coloured pyrite (not MA not mag or po) (SAMPLE).								
56½	80		red feldspathic quartz lenses 5 mm wide, parallel to schistosity.								
59	59½		Lost core								
71	72		Lost core								
80	91		fg pale brown alteration in fg gnst; some white qcv								
91	100		Pale brown and red alteration predominates in the core; cut by some white qcv, 3% py, little specular hem. The py mostly fg, the some lenses of several py cubes together. SAMPLE 5% py in pale brown altered rock 93'								
			END OF HOLE								

\* For features such as foliation, bedding, schistosity, measured from the long axis of the core.

+ Additional credit available. See Assessment Work Regulations.



ERY TWP.  
0776 Twp.

CONCESSION 5  
CONCESSION 4

CONCESSION 5  
CONCESSION 4 SCALE 1" = 660'  
LOT 1

LOT 2

PATRICK HARRINGTON  
66 FOURTH ST. KIRKLAND LAKE

LIC # K 18623  
JULY 24/80



# DIAMOND DRILL RECORD

Hole No. 4 Sheet No. 1

Property PAT HARRINGTON  
 Location EB4 TOWNSHIP L476738  
 Latitude \_\_\_\_\_  
 Departure \_\_\_\_\_  
 Bearing 43° N.E.

Dip  
45°  
 \_\_\_\_\_  
 \_\_\_\_\_  
 Total Footage 225

Elev. Collar \_\_\_\_\_  
 Datum \_\_\_\_\_  
 Date Started JUNE 20/80  
 Date Completed JUNE 23/80  
 Drilled by PAT HARRINGTON  
 Logged by FRANCIS J. O'CONNOR

Footage		Formation	Sample Number	Sample Footage	Sample Width	Gold Sample	Gold Sludge	Remarks
From	To							
0	31	BASALT HIGHLY ALTERED DARK GREEN CUT BY 25-30% CARBONATE VEINS, DISSIMINATED WITH MINOR DISSIMINATED PYRITE & CHALCOPYRITE						
31	36	LOST CORE						
36	44	BASALT HIGHLY ALTERED DARK GREY GREEN CUT BY SOME CARBONATE VEINS, DISSIMINATED WITH MINOR DISSIMINATED PYRITE & CHALCOPYRITE						
44	113	BASALT SYENITIZED - <del>pinkish</del> BUFF COLOR VOLCANIC ROCKS WELL FRACTURED FILLED WITH Qtz CARBONATE ALSO DISSIMINATED ALSO CHALCOPYRITE						
113	117	BLACK CHERTY ROCK WITH CHALCO PYRITE						
117	178	BASALT - SYENITIZED PINKISH COLOR VOLCANIC ROCK WELL FRACTURED FILLED WITH Qtz CARBONATE DISSIMINATED WITH SOME CHALCOPYRITE						
178	203	BASALT - SYENITIZED - DARKER GREY PINKISH WITH SOME CHALCOPYRITE & QUARTZ						
203	225	BASALT SYENITIZED, PINKISH BUFF COLOR VOLCANIC ROCK WITH Qtz CARB. ALSO DISSIMINATED PYRITE AND CHALCOPYRITE AND SOME HEMATITE SPARS.						
	225	END OF HOLE						

Date of Examination July 23 '80

*Francis J. O'Connor*

# DIAMOND DRILL RECORD

Hole No. 5 Sheet No. 1

Property PAT HARRINGTON CLAIM  
 Location BAJ TOWNSHIP CLAIM 476739  
 Latitude \_\_\_\_\_  
 Departure \_\_\_\_\_  
 Bearing 360° N

Collar 450 Dip \_\_\_\_\_  
 \_\_\_\_\_  
 \_\_\_\_\_  
 Total Footage 327

Elev. Collar \_\_\_\_\_  
 Datum \_\_\_\_\_  
 Date Started JULY 12/80  
 Date Completed JULY 20/80  
 Drilled by PAT HARRINGTON  
 Logged by FRANCIS J. O'NEILL

Footage		Formation	Sample Number	Sample Footage	Sample Width	Gold Sample	Gold Sludge	Remarks
From	To							
0	38	BASALT HIGHLY ALTERED - MED TO DARK GREY GREEN - CUT BY 25-35% CARBONATE VEINS AND DISSEMINATED - MINOR DISSEMINATED Pyrite						
38	41	BASALT SYENITIZED - PINKISH COLOUR VOLCANIC ROCK WELL FRACTURED - FRACTURES FILL WITH QTS - CARB. AND DISSEMINATED PYRITE						
41	68	BASALT SYENITIZED - HIGHLY ALTERED MED TO DARK GREY GREEN - <del>cut</del> WITH SOME PINKISH COLOUR VOLCANIC ROCK WITH MINOR DISSEMINATED PYRITE. BASALT HIGHLY ALTERED MED TO DARK GREY GREEN CUT BY 15% CARBONATE VEIN AND DISSEMINATED PYRITE						
68	77	BASALT HIGHLY ALTERED LIGHT GREEN 25% CARBONATE VEINS SOME PYRITE						
77	91	BASALT SYENITIZED PINKISH BUFF COLOURED VOLCANIC ROCK WELL FRACTURED. FRACTURES FILLED WITH QTS - CARB. WITH SOME PYRITE						
91	100	BASALT ALTERED MED DARK GREY GREEN WITH SOME CARB. FRACTURING MINOR DISSEMINATED PYRITE						
100	188	BASALT (SYENITIZED) PINKISH BUFF COLOURED VOLCANIC ROCK WELL FRACTURED, FRACTURES FILLED WITH QTS, CARB. AND DISSEMINATED PYRITE						
188	191	BASALT HIGHLY ALTERED MED. GREEN WITH SOME CARBONATE VEINS						

Date of Examination July 23/80

*Francis J. O'Neill*



# 149-78

PATRICK HARRINGTON

Eby Trp

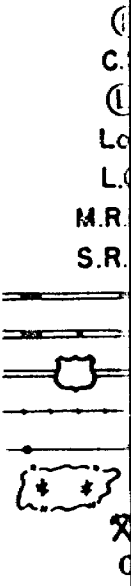
M345

LARDER LAKE  
MINING DIVISION

SCALE: 1-INCH=40 CHAIN

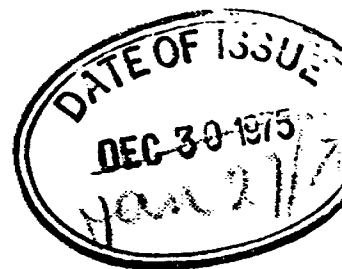
LEGEND

- PATENTED LAND
- CROWN LAND SALE
- LEASES
- LOCATED LAND
- LICENSE OF OCCUPATION
- MINING RIGHTS ONLY
- SURFACE RIGHTS ONLY
- ROADS
- IMPROVED ROADS
- KING'S HIGHWAYS
- RAILWAYS
- POWER LINES
- MARSH OR MUSKEG
- MINES
- CANCELLED



NOTES

400' surface rights reservation along the shore  
of all lakes and rivers.



Otto Twp. M.379

