



42A01SW0100 11 EBY

010

**Diamond Drilling**

Township of EBY

**Report NO 11**

**Work performed by:** Dominion Gulf Company

<b>Claim NO</b>	<b>Hole NO</b>	<b>Footage</b>	<b>Date</b>	<b>Note</b>
L 57602	114-55-1	535.0'	Apr/55	

**Notes:**

# DIAMOND DRILL RECORD

LOCATION: LAT.. 2+50N. of Tle Line 26+40S  
 DEP. On Line 89+00W,  
 ELEVATION OF COLLAR .....  
 DATUM .....  
 DIRECTION AT START: BEARING N-170-W  
 DIP 45°, 250°-380°, 535°-220°

STARTED April 29, 1955.  
 COMPLETED May 4, 1955.  
 ULTIMATE DEPTH 535 feet.  
 PROPOSED DEPTH 750 feet.

DEPTH FEET	FORMATION	SAMPLE NO	WIDTH OF SAMPLE	GOLD \$	SLUDGE GOLD \$	D.G.C. Specimens
0 - 67	Casing					
67 - 166	Basic Andesite - medium to fine grained, dark grey-green, fairly massive, weakly magnetic. Fractures contain narrow quartz and carbonate filling. slight lineation at 45°. 75' - 1" quartz and carbonate at 30° 76.5' - 20 quartz and carbonate at 30° No mineralisation 105.5-108' - Weak shearing at 40° 110' - 2" quartz and carbonate at 40°, no mineralisation 158 - 163.5 - ground core 165.5-166 - brecciated, 30% irregular quartz and carbonate. No mineralisation.					
166 - 172.5	Gabbro - fine to medium grained, medium grey-green colour, massive, intrusive sill with fine grained contacts.					
172.5-182	Andesite - fine grained, altered weakly brecciated, grey-green colour.					

DRILLED BY Heath & Sherwood  
 EX<sup>m</sup> CORP.

*Drill core is stored at the  
 London Lake office of Algonquin  
 Surf Co.*

SIGNED C.G. MacIntosh.

# DIAMOND DRILL RECORD

LOCATION: LAT. \_\_\_\_\_  
 DEP. \_\_\_\_\_  
 ELEVATION OF COLLAR \_\_\_\_\_  
 DATUM \_\_\_\_\_  
 DIRECTION AT START: BEARING \_\_\_\_\_  
 DIP \_\_\_\_\_

STARTED \_\_\_\_\_  
 COMPLETED \_\_\_\_\_  
 ULTIMATE DEPTH \_\_\_\_\_  
 PROPOSED DEPTH \_\_\_\_\_

DEPTH FEET	FORMATION	SAMPLE NO	WIDTH OF SAMPLE	GOLD g	SLUDGE GOLD g
182 - 207	<u>Andesite</u> - medium grained, grey-green colour highly altered, slightly lineated at 45° carbonatized. Little bright green mineral (mariposite) Few scattered quartz and carbonate stringers. No mineralization.				
207 - 239	<u>Andesite</u> - fine grained, highly altered, carbonatized. Sheared - lineation at 40° yellowish - carbonate streaks. No mineralization host core from 217.5 to 219, 221.3 to 222.5, 223.5 to 225, 228 to 229.				
239 - 251	<u>Conglomerate</u> (Timiskaming) - highly altered, brecciated, carbonatized, grey-green colour. Weak lineation at 40°. No mineralization. Owing to extreme alteration, the contact with volcanics is poorly defined. Sediments are recognized by occasional jasper relics.				

NORTHERN MINERALS LIMITED, 100 KING STREET WEST, TORONTO, CANADA

DRILLED BY Heath & Sherwood

SIGNED C.G. MacIntosh.

# DIAMOND DRILL RECORD

LOCATION: LAT. ....  
 DEP. ....  
 ELEVATION OF COLLAR .....  
 DATUM .....  
 DIRECTION AT START: BEARING .....  
 DIP .....

STARTED .....  
 COMPLETED .....  
 ULTIMATE DEPTH .....  
 PROPOSED DEPTH .....

DEPTH FEET	FORMATION	SAMPLE NO	WIDTH OF SAMPLE	GOLD \$	SLUDGE GOLD \$	D.G.C. Specimens
	244 - 246 - Strong fault zone. 3" of clay gouge recovered.					
251 - 342	Conglomerate - weakly brecciated, less highly altered. Rebbles of jasper, syenite, granite etc. to 4" in diameter.					
	265.5 - 266 - sheared at 45°. Chlorite and carbonate. No mineralization.					
	330 - 332.8 - weakly sheared at 40°. No mineralization. Few tiny carbonate stringers. Rose core from 317.5 to 327.					
342 - 383	Conglomerate - fairly massive. Few tiny carbonate stringers. Weak alteration.					
383 - 388.5	Greywacke - fine grained; grey green colour; few small pebbles. Weak lineation at 50°					
388.5 - 391.5	Conglomerate - massive; small pebbles					
391.5 - 410.5	Greywacke - fine grained, grey-green; fairly massive. Few quartz-carbonate stringers. Weak lineation at 55°.					

NORTHERN MINERALS LIMITED (INCORPORATED IN CANADA) 1964

DRILLED BY Heath and Sherwood.

SIGNED C.G. MacIntosh.

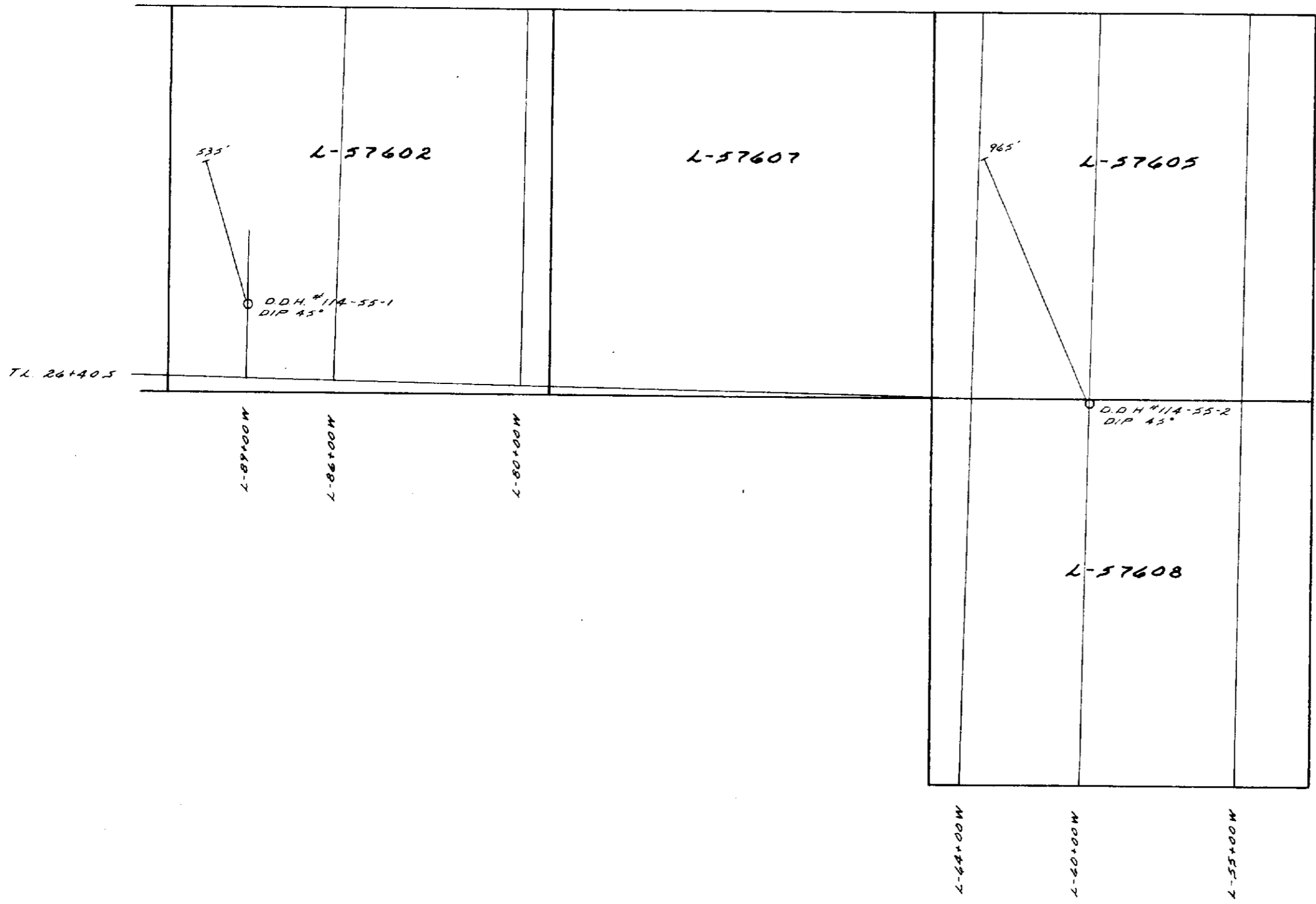
# DIAMOND DRILL RECORD

LOCATION: LAT. \_\_\_\_\_  
 DEP. \_\_\_\_\_  
 ELEVATION OF COLLAR \_\_\_\_\_  
 DATUM \_\_\_\_\_  
 DIRECTION AT START: BEARING \_\_\_\_\_  
 DIP \_\_\_\_\_

STARTED \_\_\_\_\_  
 COMPLETED \_\_\_\_\_  
 ULTIMATE DEPTH \_\_\_\_\_  
 PROPOSED DEPTH \_\_\_\_\_

DEPTH FEET	FORMATION	SAMPLE NO	WIDTH OF SAMPLE	GOLD \$	SLUDGE GOLD \$	D.G.C. Specimens
410.5 - 507.5	<u>Conglomerate</u> - fairly massive; mostly small pebbles; weak lination at 55°.					
	478-480 - weakly brecciated; little quartz and carbonate no mineralization.					
	461' - Lination at 65°					
507.5-513.5	<u>Greywacke</u> - medium grained; grey-green. Slight lination at 60°					
513.5-523	<u>Conglomerate</u> - massive					
523 - 535	<u>Greywacke</u> - fine grained; weakly brecciated; few pebbles.					
	516.5 - 517.5 Few quartz - carbonate veinlets @ 55° to 65°, no mineralization.					
	End of hole at 535					

L. 57608



DOMINION GULF COMPANY  
LOCATION PLAN SHOWING D.D.H.-114-55-1 & 2  
**EBY I**  
PROVINCE OF ONTARIO  
SCALE: 1"=400'      JUNE 20, 1955.



42A015W0100 11 EBY