



42A02NE0146 2.1656 CURRIE

010

RECEIVED

DEC 9 1974

EXPLORATION ON CURRIE TOWNSHIP  
(Group 2)

PROJECTS UNIT

INTRODUCTION

Work is submitted for a group of 38 claims in Currie Township numbered: L381585 to L381590 inclusive; L388426 to L388445 inclusive; L388538 to L388545 inclusive; L389587; L389588; L400054 and L400055.

A ground magnetometer survey was carried out over the entire claim group during October and November 1974.

LOCATION AND ACCESS

Thirty six of the claims are located in the south half of Concession III on Lots 1 to 6. Two claims are located in the south half of the south half of Lot 4, Concession IV. The claims are about four miles west of Matheson on Highway 101 and are accessible by gravel roads.

GEOLOGY (Ref: ODM Map 2071)

The claim group is extensively covered by overburden but is believed to be underlain by basic to intermediate volcanic rocks, cut by N-S trending diabase and feldspar dykes.

HISTORY

Unknown. There is no record on file of any previous exploration.

SURVEY

A grid of about 38 miles of line was cut with line spacing at 300 to 400 foot intervals, from a base line 3 miles long bearing N90°E. Magnetometer readings were taken at 100 foot intervals on all of the grid lines and along the base line.

RESULTS

Throughout the claim group magnetic relief is low in the northern portion and abruptly rises to higher relief in the southern portion. Readings vary from 400 to 8000 gammas with most readings being about 1000 gammas.

In the south half of Lots 1 and 2, Concession III, the magnetic trend is NE-SW gradually turning to E-W by Lot 3 and remaining E-W through to Lot 7, although there are several N-S trending contours in the north half of Lots 5 and 6 which may be caused by diabase dykes.

Two roughly parallel zones of higher (1500 gammas) magnetic relief running east-west flank an east-west zone of lower (750 gammas) relief in the southern half of Lots 1, 3, 4, 5, and 6. A magnetic depression (400-500 gammas) is found immediately to the north of this zone in the south half of Lot 5.

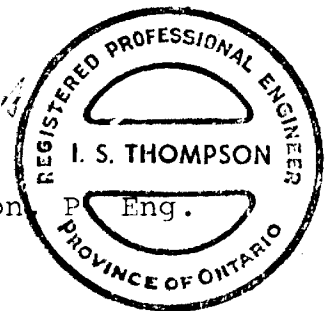
A NE-SW magnetic high in the 4500 gamma range is found as part of a larger NE-SW feature along the north boundary of Lot 1, Concession III.

A single high reading of 8008 gammas flanked on the north by an 800' wide zone with a magnetic relief of about 1000 gammas (lowest reading 725 gammas) is found in the southwest corner of Lot 1, Concession III.

*Yonkers, N.Y. 1944*

*I. S. Thompson*

I. S. Thompson



O.D.M. File # 2.1656

Re: Magnetometer Survey

Base Station: at the point of intersection of Concession Line III/IV, Bowman Twp. and the Currie-Bowman Twp. line. The reading at this station is 880 gammas, vertical field strength.

Sub-base Station: located on each grid line at the base line.

Diurnal Correction: sub-base stations are located at each grid line on the base line. A closed loop traverse was done in which two sub-base stations are read, then the two lines (going away from the base line on the first grid line, returning to the base line on the second grid line), then the same two sub-base stations are read again. The average difference between the first and second readings of the sub-base station is taken to be the diurnal variation. The diurnal variation is divided by the number of readings taken on the grid lines to find the variation/grid line reading. The final correction is: reading + variation/grid line reading x number of the grid line station = final reading nearest 5 gammas.



G



42A02NE0146 2.1656 CURRIE

900

File 2.1656

TO BE ATTACHED AS AN APPENDIX TO TECHNICAL REPORT  
FACTS SHOWN HERE NEED NOT BE REPEATED IN REPORT  
TECHNICAL REPORT MUST CONTAIN INTERPRETATION, CONCLUSIONS ETC.

Type of Survey(s) Magnetic

Township or Area Currie Township

Claim Holder(s) Duncan R. Derry Limited

Survey Company Derry, Michener & Booth

Author of Report I. S. Thompson, P. Eng.

Address of Author c/o DMB, 401 Bay St, Toronto

Covering Dates of Survey Oct. 19/74 to Nov. 30/74  
(linecutting to office)

Total Miles of Line Cut 38

MINING CLAIMS TRAVERSED  
List numerically

38 Claims	
(prefix)	(number)
L381585 ✓	L388442 ✓
L381586 ✓	L388443 ✓
L381587 ✓	L388444 ✓
L381588 ✓	L388445 ✓
L381589 ✓	L388538 ✓
L381590 ✓	L388539 ✓
L388426 ✓	L388540 ✓
L388427 ✓	L388541 ✓
L388428 ✓	L388542 ✓
L388429 ✓	L388543 ✓
L388430 ✓	L388544 ✓
L388431 ✓	L388545 ✓
L388432 ✓	L389587 ✓
L388433 ✓	L389588 ✓
L388435 ✓	
L388436 ✓	L400054 ✓
L388437 ✓	L400055 ✓
L388438 ✓	
L388439 ✓	
L388440 ✓	
L388441 ✓	

If space insufficient, attach list

SPECIAL PROVISIONS  
CREDITS REQUESTED

DAYS  
per claim

Geophysical

- Electromagnetic 40

- Magnetometer

- Radiometric

- Other

Geological

Geochemical

ENTER 40 days (includes  
line cutting) for first  
survey.

ENTER 20 days for each  
additional survey using  
same grid.

AIRBORNE CREDITS (Special provision credits do not apply to airborne surveys)

Magnetometer Electromagnetic Radiometric  
(enter days per claim)

DATE: Dec. 5/74 SIGNATURE: I. S. Thompson P. Eng.  
Author of Report or Agent

Res. Geol. \_\_\_\_\_ Qualifications 2.1682

Previous Surveys L.D.  
File No. Type Date Claim Holder

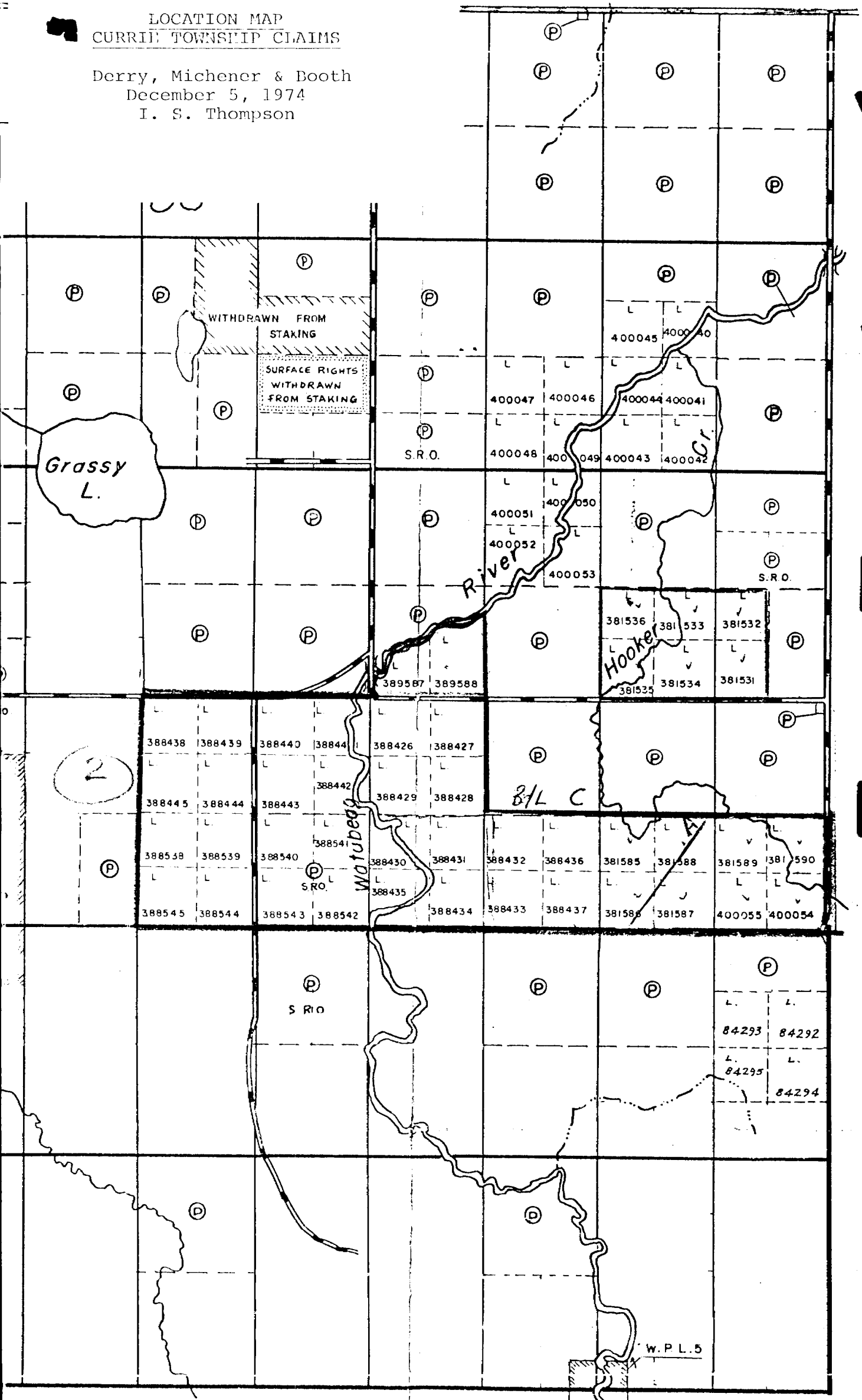
File No.	Type	Date	Claim Holder

TOTAL CLAIMS 38

OFFICE USE ONLY

LOCATION MAP  
CURRIE TOWNSHIP CLAIMS

Derry, Michener & Booth  
December 5, 1974  
I. S. Thompson



VI

V

IV

III

II

I

7 6 5 4 3 2 1

Taylor Twp.

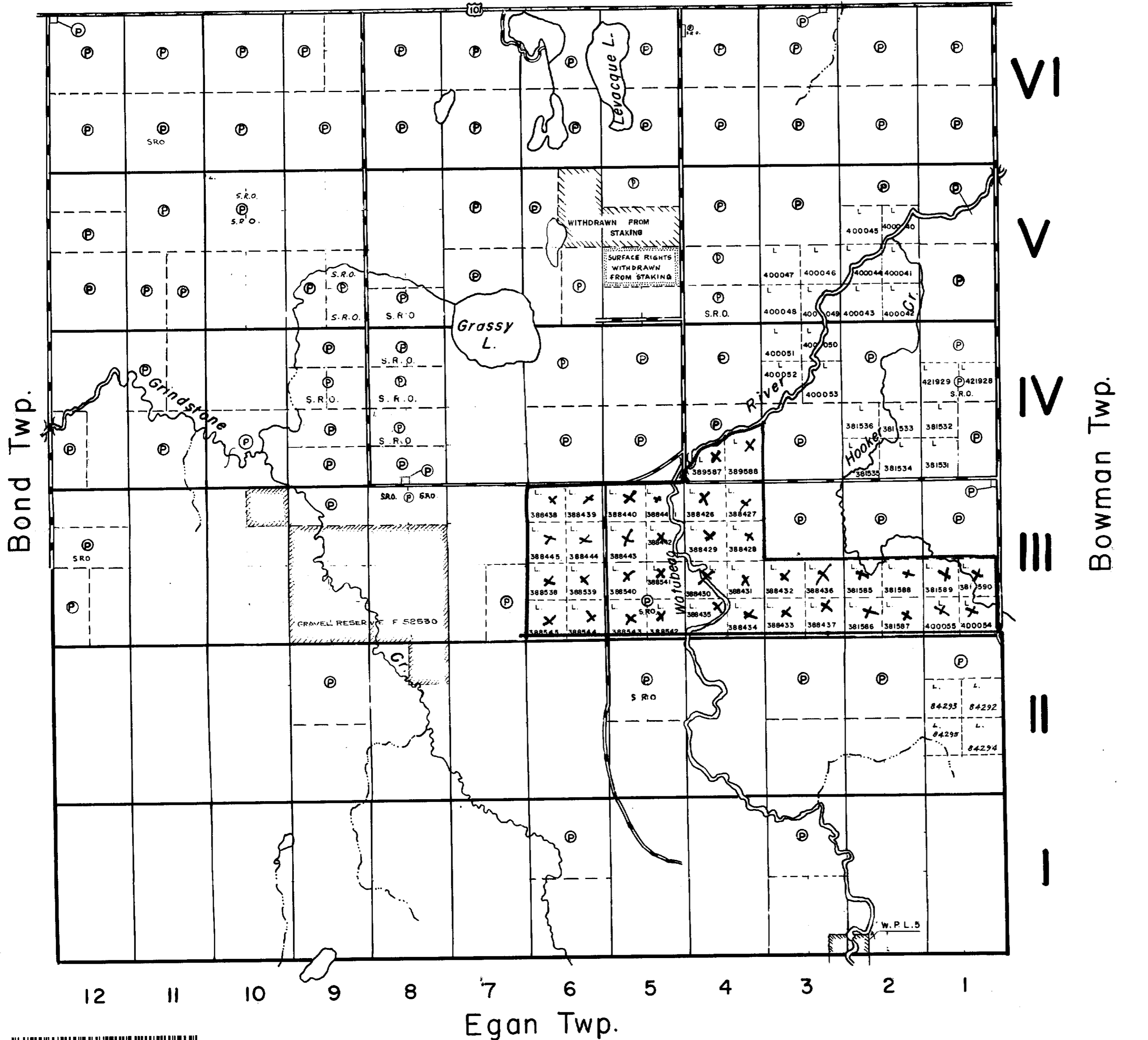
THE TOWNSHIP OF 2.1656

# CURRIE

DISTRICT OF COCHRANE

LARDER LAKE MINING DIVISION

SCALE: 1-INCH=40 CHAINS



## LEGEND

- PATENTED LAND (P)
- CROWN LAND SALE (S or CS)
- LEASES (L)
- LOCATED LAND (Loc.)
- LICENSE OF OCCUPATION (L.O.)
- MINING RIGHTS ONLY (M.R.O.)
- SURFACE RIGHTS ONLY (S.R.O.)
- ROADS
- IMPROVED ROADS
- KING'S HIGHWAYS
- RAILWAYS
- POWER LINES
- MARSH OR MUSKEG
- MINES

## NOTES

AREA MARKED THUS  
Files: 11593, 21312  
WITHDRAWN FROM STAKING  
UNDER SEC. 39 (D) OF MINING ACT.

400' Surface rights reservation around all lakes and rivers.

AREA MARKED THUS  
GRAVEL RESERVE FILES: 52530, 47365, 50665, 7669, 42636, 10663

**MINING LANDS - DATE OF ISSUE**  
DEC 10 1974  
MINISTRY OF NATURAL RESOURCES

PLAN NO.- M.341

ONTARIO  
MINISTRY OF NATURAL RESOURCES  
SURVEYS AND MAPPING BRANCH



42A02NE0146 2.1656 CURRIE

200

LEGEND

values in feet

1000 Gamma Contour Interval

500

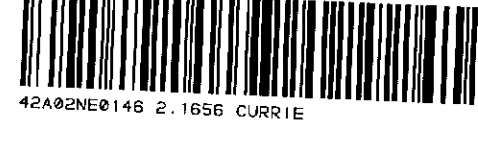
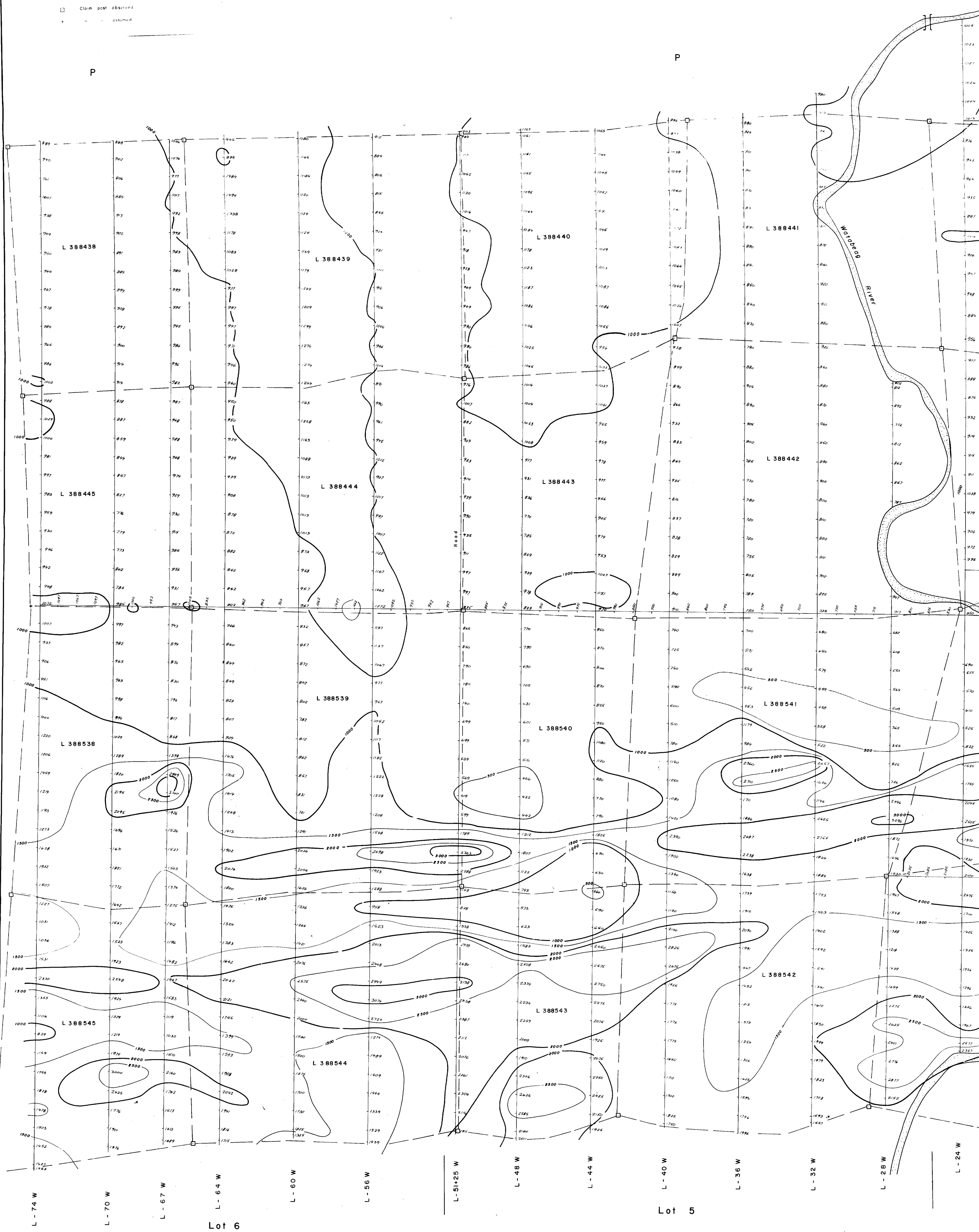
Mag. loc.

Survey Equipment: Sinter MF-11 Flipgate Magnetometer

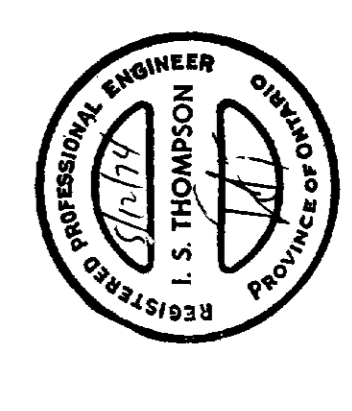
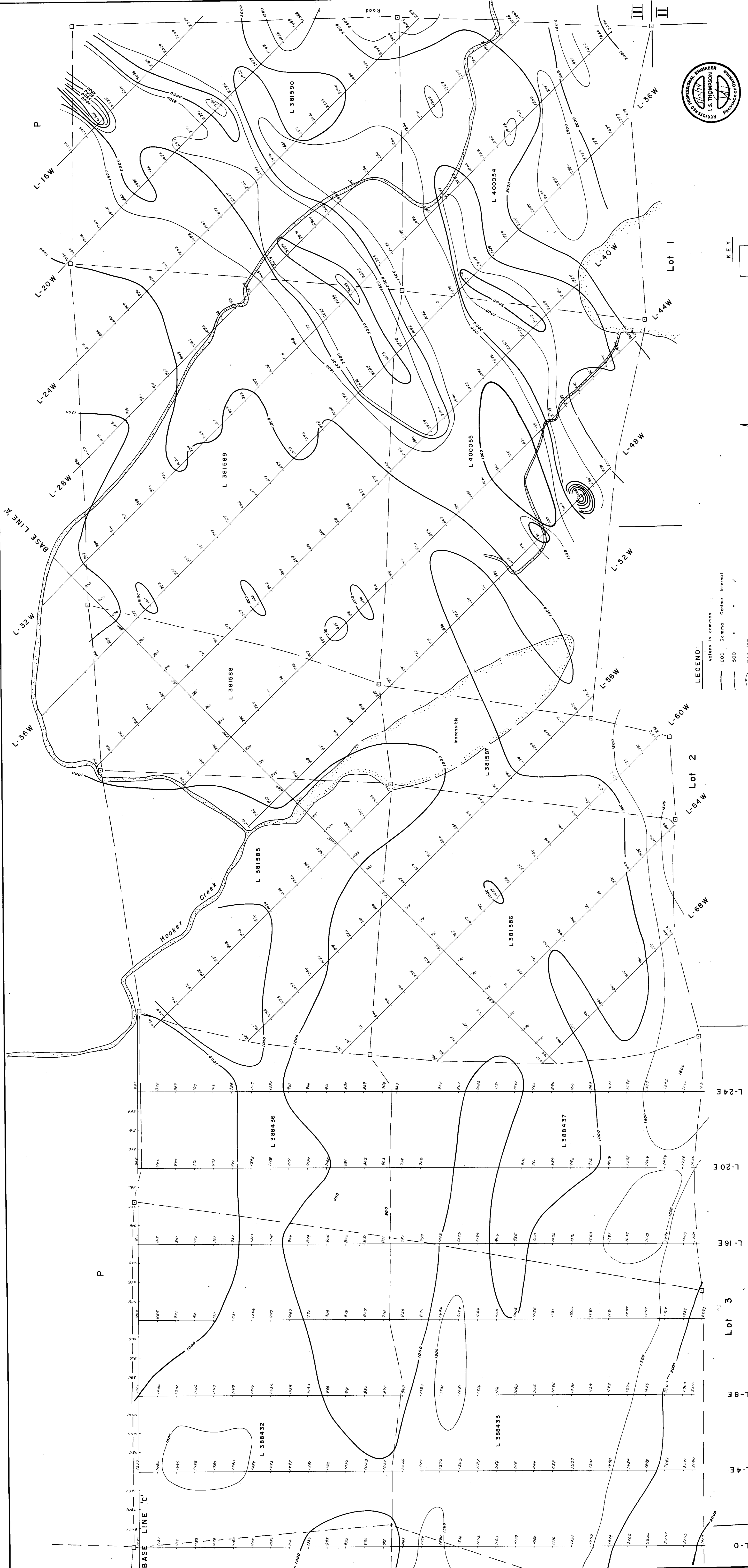
P Patented Land

□ Claim post observed

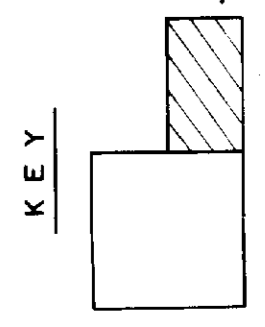
• assumed







DERRY, MICHENER & BOOTH  
 CURRIE TOWNSHIP - ONTARIO  
**MAGNETOMETER SURVEY**  
 No. 30, 1974 By: I.S. Thompson, P. Eng. Map No.



**LEGEND:**  
 Values in gammas

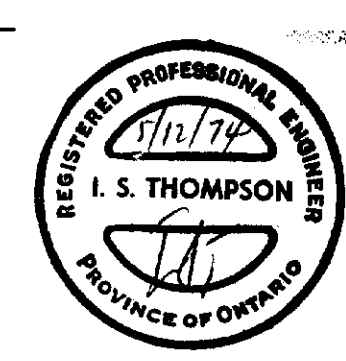
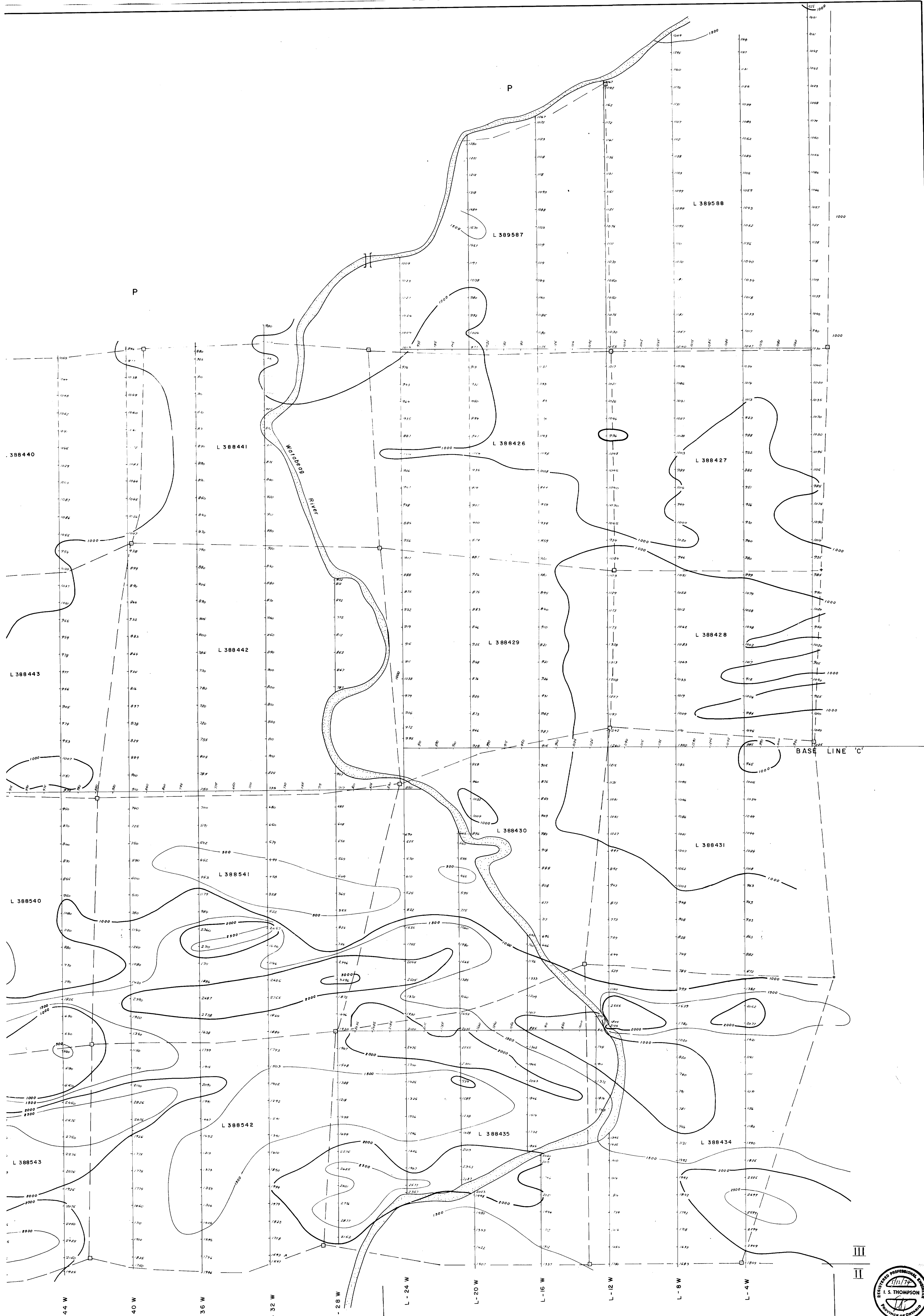
- 1000 Gamma Contour Interval
- 500 " " " "
- Mog low

Survey Equipment: Schlöter MF-1 Fluggel Magnetometer.

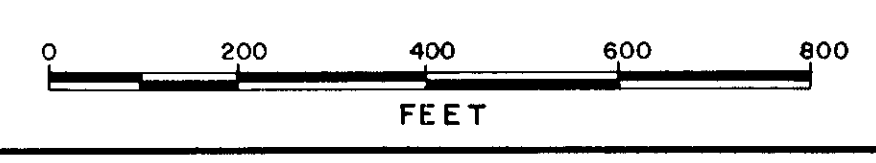
- P Potent Land
- Claim post observed
- + assumed







DERRY, MICHENER & BOOTH  
 CURRIE TOWNSHIP - ONTARIO  
 MAGNETOMETER SURVEY



Lot 4

Lot 5

A. N.

KEY

