



42A02NW0040 10 ROBERTSON

010

Diamond Drilling

Township of ROBERTSON

Report NO 10

Work performed by: Cobalt Consolidated Mining

Claim NO	Hole NO	Footage	Date	Note
MR. 22936	1-A	135.0'	Sept/56	
	1-B	97.0'	Sept/56	
	1-C	161.0'	Oct/56	
	2	286.2'	Oct/56	
	3	295.0'	Oct/56	
	4	304.0'	Oct/56	
	5	447.0'	Oct/56	
	6	375.0'	Oct/56	
		<u>2100.2'</u>		

Notes:

- C O P Y -

COBALT CONSOLIDATED MINING CORPORATION LTD.

Robertson Twp.

Hole No. 1-A

Dip: 45°

Start: Sept. 27, 1956

Strike: AZ.196°

Finish: Sept. 29, 1956

Logged by: W. J. Hylands

<u>FOOTAGE</u>	<u>DESCRIPTION</u>
0 - 20 -	Casing
20 - 50 -	Qtz. Diorite - at 34' few specks chalco. in hairlike carbonate seams - slips 30° and 50° narrow seams of epidote few places at 43' - ½" Qtz. seam, few specks Pyrite at 45' - few specks chalco.
50 - 87.5 -	Qtz. Diorite - at 52.6' - 4" irreg. Qtz. - little Pyrite at 67' - 2" irreg. Qtz. - few blebs of Pyrite and Chalco 1/16" seam - pyrite at 50° to core at 72.8' - 2" irreg. Qtz. - no min. at 77' - cut across old diamond drill hole - few specks of Py and Chalco showing at intersection at 79.8' to 82' - dissen Chalco (light) in blebs (sample) and narrow seams - slips at 30 and 50 deg.
87.5- 135 -	Diabase 87.5 - 95' - very fine grained Diabase - balance grading coarser - contact at 30° with Qtz. Diorite

End of Hole

● 1A conti'd.

Hole 1A was set up adjacent to what was believed to be Hole No.3 (from previous drilling) and drilled parallel to that hole and with the same dip.

80 - 82' - 2 ft. disseminated Pyrite and Chalco in
Diorite

- Sample #1 - 0.07% Cu.

75 - 80' - 5 ft. disseminated Pyrite and Chalco (light)
in Qtz. Diorite

- Sample #2 - 0.04% Cu.

- C O P Y -

COBALT CONSOLIDATED MINING CORPORATION LTD.

Robertson Township

Hole No. 1-C

Dip: - 60°

Start: Oct. 4, 1956

Strike: Az. 138°

Finish: Oct. 5, 1956

Logged by: W. J. Hylands

FOOTAGE

DESCRIPTION

0 - 18	-	Casing
18 - 25	-	Qtz. Diorite - consid. Epidote alteration - few carb seams - slips 30 and 45° - red iron printed on some slips.
25 - 50	-	As above - 40' to 50' numerours fine fractures - irregular - filled with carbonate.
50 - 75	-	As above - few carb. seams up to 1" wide - slips 30 and 45°
75 - 101.7-	-	As above - at 89' seamy chalco over 1 inch assoc. with carb. filling, 30° to core. - At 96' - few specks of Pyrite and chalco.
101.7- 106.3-	-	Mica schist - contact 30° to core.
106.3- 125	-	Qtz. Diorite - numerous carb and fine Qtz. (irregular) fillings - at 107-109' little scat. Pyrite
125 - 161	-	as above - some epidote alteration - few carb seams

END OF HOLE

Drilled from same set up as Holes 1-A and 1-B,
and drilled directly under Hole 1-B.

- C O P Y -

COBALT CONSOLIDATED MINING CORPORATION LTD.

Robertson Twp.

Hole No. 2

Dip: - 45°

Start: Oct. 6, 1956

Strike: Az. 180°

Finish: Oct. 9, 1956

Logged by: W. J. Hylands

<u>FOOTAGE</u>	<u>DESCRIPTION</u>
0 - 12	Casing
12 - 31.2	Qtz. Diorite - little scat ^{FINE} scat, Pyrite few places
31.2 - 40	Qtz. Dior. - porphyritic
40 - 45	Andesite - porphyritic texture - some Qtz. and some feldspur phenos.
45 - 58	Andesite - at 46.8; fine seam of Pyrite 85° to core - few specks at 53' - slips gen. 30 & 45°
58 - 88	Qtz. Diorite (or Haileyburian) - 45° slips painted with red iron - slight pyrite, scat.
88 - 106.7	Andesite - slips ge. 30 and 45°
106.7 - 250	Qtz. Diorite - at 166.2 - 6" epidote alteration - slips 30 45 and 60° 225 - 250 - considerable epidote alteration - few scattered specks Pyrite.
250 - 286	Qtz. Diorite - few scat. specks Pyrite - grades fine to 254' then coarse to 264' then fine again and little Pyrite at 278' little Pyrite 285.4 - 286.2 - ball Qtz. - no min.

END OF HOLE

Hole location of Line 3W at 650' ft. south.

COBALT CONSOLIDATED MINING CORP. LTD.

Robertson Twp.

Hole No. 3

Dip: - 45°

Start: Oct. 10, 1956

Strike: Az. 180°

Finish: Oct. 12, 1956

Logged by: W. J. Hylands

FOOTAGE

DESCRIPTION

0	-	14	-	Casing
14	-	30	-	Keewatin complex - little scat. Pyrite 23 to 24' - lost core 25 to 27.8 - lost core
30	-	109	-	Qtz. Diorite - 37 to 38' lost core at 46.5' - little Pyrite - slips 45 to 60°
109	-	114	-	Contact zone - Qtz. Dior. and schist complex - scat. Pyrite and little chalco (sample No. 6)
114	-	130	-	Schist complex - numerous very narrow seam carb - little scat. Pyrite - slips 45 and 60°
130	-	131.3	-	Alt. Dior. numerous blebs Pyrite in middle 4" - contact 50°
131.3	-	171	-	Schist complex as in (114 - 130)
171	-	188.5	-	Q. Dior. - 45° contact - some chilling effect - little Pyrite over 6" (170.5 to 171')
188.5	-	238.3	-	Andesite schist complex - 226-228, some alteration and little scat. Py.
238.3	-	244.3	-	redish med. gr. dike (Felsite) carbonate specks - some weathered out leaving holes - looks similar to carbonate dike along creek (L. J. Cunningham)

45° contact.

244.3 - 263 - Andesite - carb. seams - little scat. Pyrite
few places

263 - 288 - Alt. Q. Dior and (or) Keewatin Gabbro.
286.5 - 288 lost core

288 - 291 - Keewatin Gabbro - some rusty slips 15°

291 - 295 - Alt. Andesite

292.5 to 293.5 lost core

294 to 295 lost core

END OF HOLE

Hole located at 900 s on the 1 plus 50 line east

109 - 114 - 5 ft. Qtz.-diorite and schist complex -
scat. pyrite and little chalco
- sample #6 - 0.07% cu.

COBALT CONSOLIDATED MINING CORP. LTD.

Robertson Twp.

Hole No. 4

Dip: - 45°

Start: Oct. 13, 1956

Strike: Az. 180°

Finish: Oct. 16, 1956

Logged by: W. J. Hylands

<u>FOOTAGE</u>	<u>DESCRIPTION</u>
0 - 20	Casing
20 - 31	Qtz. Diorite
31 - 44	Mica Schist Complex 31' to 32' - light coloured altered rock - little fine scat. pyrite.
44 - 47	Qtz. Diorite
47 - 48	Mica Schist complex
48 - 95	Qtz. Diorite at 715.' - ½" little Py. (45°) slips 45 & 60° at 80' to 83' - alt. Dior. Qtz. seams and scat. Py.
95 - 120	Qtz. Dior. - little scat. Pyrite few places.
120 - 143	as above.
143 - 188	as above.
188 - 190.7	greenstone dyke - irreg. contacts - little Py at lower contact 45°
190.7 - 200	Qtz. Dior.
200 - 208	Greenstone dyke - little scat. Py.
208 - 267	Slightly alt. Dior.

267 - 285.5 Qtz. Dior.
285.5- 286.3 Greenstone dyke - 35° contact
286.3- 304 Slightly alt. Dior. - slips at 30° and 60°

END OF HOLE

Hole located on Line 6E at 550' south.

80 - 83 - 3 ft. Alt. Qtz. Diorite - little scat. pyrite -
Qtz. seams
- Sample #5 - 0.12% cu.

- C O P Y -

COBALT CONSOLIDATED MINING CORP. LTD.

Robertson Twp.

Hole No. 5

Dip: 45°

Start: Oct. 17, 1956

Strike: Az. 180'

Finish: Oct. 22, 1956

Logged by: W. J. Hylands

<u>FOOTAGE</u>	<u>DESCRIPTION</u>
0 - 22	Casing
22 - 187.5	Qtz. Diorite at 35' - little Pyrite 20° to core at 44' - 6" fine dissem Pyrite - scat. irregular seams carbonate - slips at 30 and 50°
187.5 - 195.5	Reddish coloured rock (Felsite Dyke) contacts 40° - fine Py. at 220.5' - 1" Qtz. and little Pyrite at 300' - 6" White Qtz. few blebs Pyrite
310 - 429	Keewatin Gabbro - at 310' - 1" white Qtz. 45° to core
429 - 447	Qtz. Diorite - Gabbro core broken up near contact.

END OF HOLE

No. 5 Hole located on line 3 EAST at 950' South.

- C O P Y -

COBALT CONSOLIDATED MINING CORP. LTD.

Robertson Twp.

Hole No. 6

Dip: - 45°

Start: Oct. 23, 1956

Strike: Az. 225°

Finish: Oct. 25, 1956

Logged by: W. J. Hylands

<u>FOOTAGE</u>	<u>DESCRIPTION</u>
0 - 14	Casing
14 - 75	Qtz. Dior. few irreg. carb. seams - little py. few places.
75 - 102	As above - at 92' irreg. fine Py and little chalco 50° to core - slips at 20 and 50°
102 - 109	Reddish coloured rock with needle like dark coloured grains - Felsite dyke? - little fine dissem. Pyrite
109 - 281	Qtz. Dior. some alteration few places - at 172' - little fine Pyrite with some alteration
281 - 375	Keewatin Gabbro - little Pyrite few places. 223 to 225 lost core
END OF HOLE	
at 108'	Hole located 65' West of 1050'S on line 6E Felsite dyke 6" sample fine pyrite mineralization Sample #7 - % Au - NIL

HOLE NO	DIP	LENGTH
1-A	-45°	135'
1-B	-45°	97'
1-C	-60°	161'
2	-45°	286'
3	-45°	295'
4	-45°	304'
5	-45°	427'
6	-45°	375'
TOTAL		2100

NOTE: ALL HOLES EX-CORE

DIAMOND DRILL CONTRACTOR
R. BARRON - HAILEYBURY-ONT

FOR

COBALT CONSOLIDATED MINING CORP. LTD.

COBALT ONT

SKETCH PLAN

SHOWING

LOCATION OF DIAMOND DRILL HOLES

ON CLAIM N^oMR 22936 - ROBERTSON TWP.

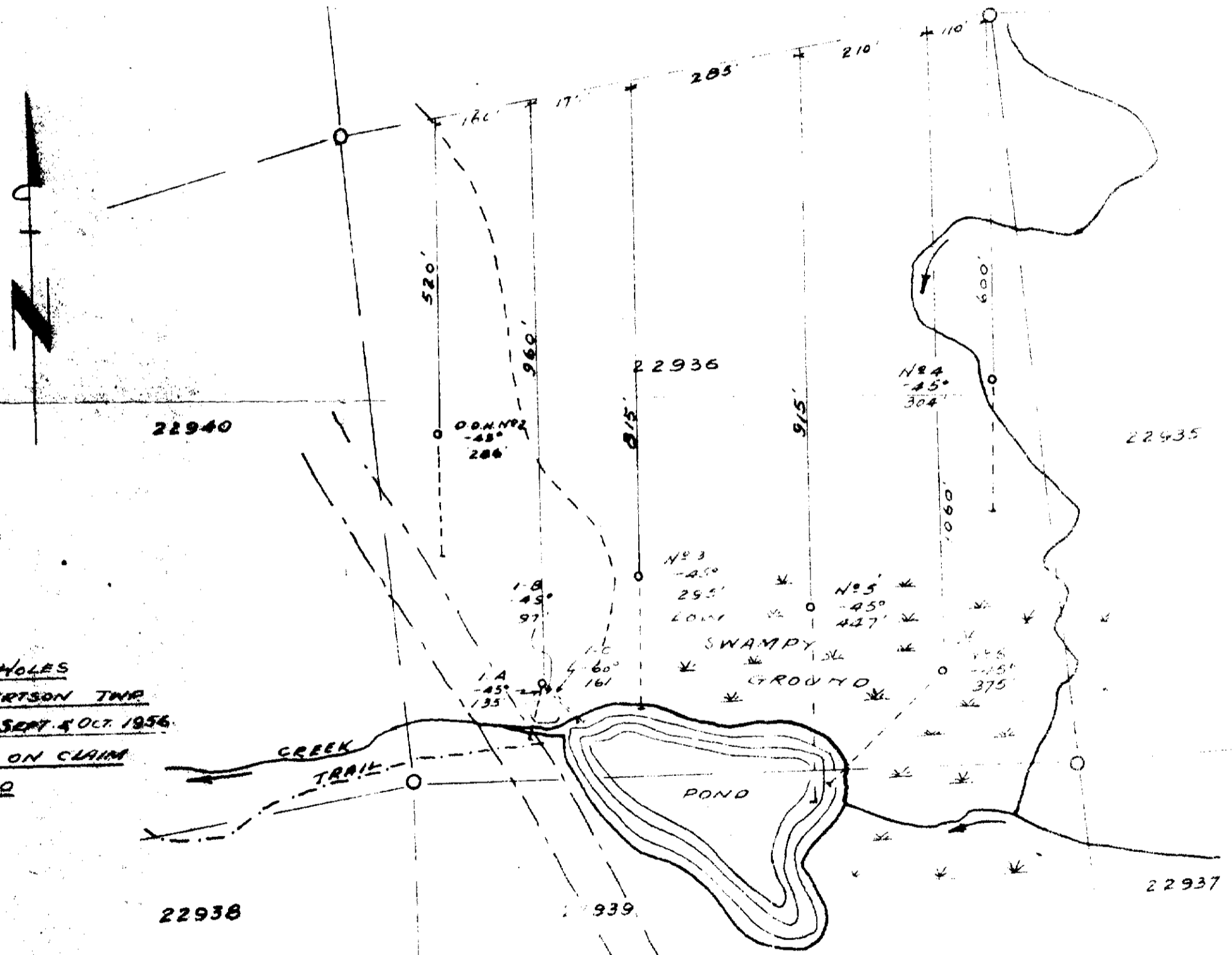
MONTREAL RIVER MINING DIVISION - SEPT. & OCT. 1956.

- WORK DONE TO APPLY ON CLAIM

N^os 22933-4-5-6-7-8-9-40

AND 22925-6

SCALE - 1" = 200'



ASSESSMENT WORK

T-1000

