



42A02NW0061 25 MCNEIL

010

DIAMOND DRILLING

TOWNSHIP: McNEIL TWP.

REPORT NO: 25

WORK PERFORMED FOR: Kerr Addison Mines Ltd.

RECORDED HOLDER: Same as above [xx]  
: Other [ ]

<u>Claim No.</u>	<u>Hole No.</u>	<u>Footage</u>	<u>Date</u>	<u>Note</u>
L 724929	KM-87-1	500'	Sept/87	(1)
L 598878	KM-87-2	598'	Sept/87	(2)
L 579574	KM-87-3	500'	Sept-Oct/87	(3)
	KM-87-4	502'	Oct/87	(3)

NOTES: (1)#467-87, filed in Mar/88  
(2)#465-87, filed in Mar/87  
(3)#466-87, filed in Mar/87

# DIAMOND DRILL RECORD

LOGGED BY R.J. FRASER

KERR ADDISON MINES LTD

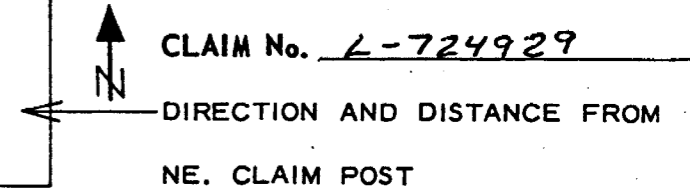
PROPERTY ARGYLE OPTION - McNEIL TOWNSHIP ONTARIO

D.D.H. No. KM-87-1 PAGE 1 OF 1

LATITUDE 3+28S BEARING OF HOLE 310° STARTED SEPT 18 1987

CLAIM No. L-724929

DEPARTURE 23+41E DIP OF HOLE -45° COMPLETED SEPT 21 1987



ELEVATION \_\_\_\_\_ DIP TESTS NONE DEPTH 500'

DRILLED BY NEUMAC INDUSTRIES NQ DRILL CORE

FOOTAGE		DESCRIPTION	SAMPLE No.	FOOTAGE		SAMPLE LENGTH	ASSAY			
FROM	TO			FROM	TO					
<u>SUMMARY DRILL LOG</u>										
0.0'	6.5'	CASING								
6.5'	267.0'	BASALT								
267.0'	268.1'	FELSITE DYKE								
268.1'	278.2'	BASALT								
278.2'	295.2'	FELSITE DYKE								
295.2'	472.8'	BASALT								
472.8'	485.8'	FELSITE DYKE								
485.8'	500.0'	PILLOWED BASALT								
500.0'		END OF HOLE								

*R.J. Fraser*  
October 5/87

*R.J. Fraser*

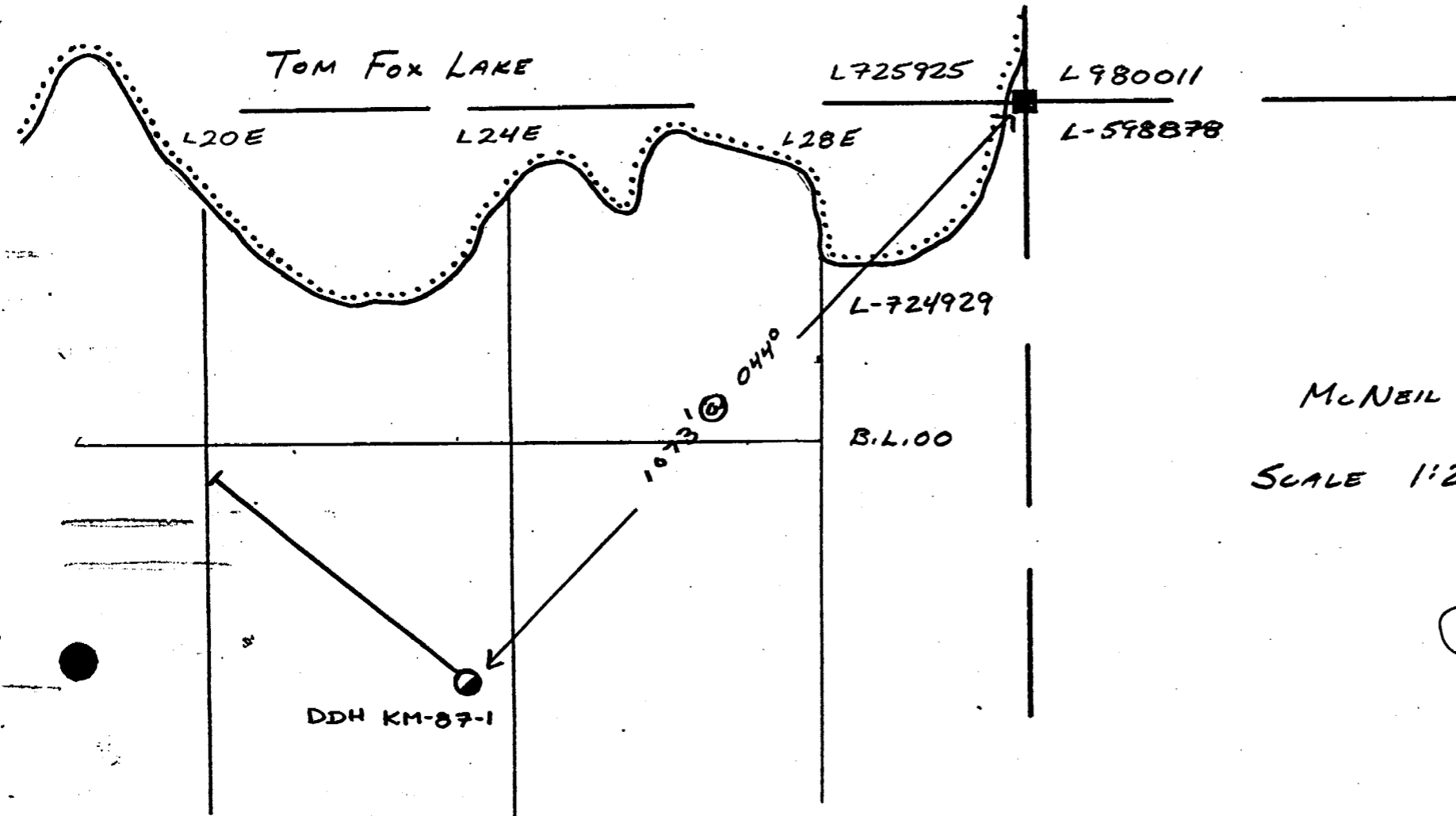
# KERR ADDISON MINES LTD DIAMOND DRILL HOLE RECORD

PROJECT FOX LAKE 0-31  
HOLE No. KM-87-1

LOCATION	DIP TEST			LEVEL	HORIZONTAL COMPONENT	DATE STARTED <u>SEPT. 18/87</u>
AREA or TWP. <u>MCNEIL TWP</u>	FOOTAGE	ANGLE		ELEVATION	VERTICAL COMPONENT	DATE FINISHED <u>SEPT. 21/87</u>
		RECORDING	CORRECTED			
CLAIM NO. <u>L-724929</u>				LATITUDE <u>3+28 S</u>	BEARING <u>310°</u>	LOGGED BY: <u>R.J. FRASER</u>
HTS <u>42-A-2</u>				DEPARTURE <u>23+41 E</u>	LENGTH <u>500'</u>	PURPOSE
				CORE LOCATION <u>KERR MINE VIRGINIA TOWN ONT.</u>		TOT. RECOVERY

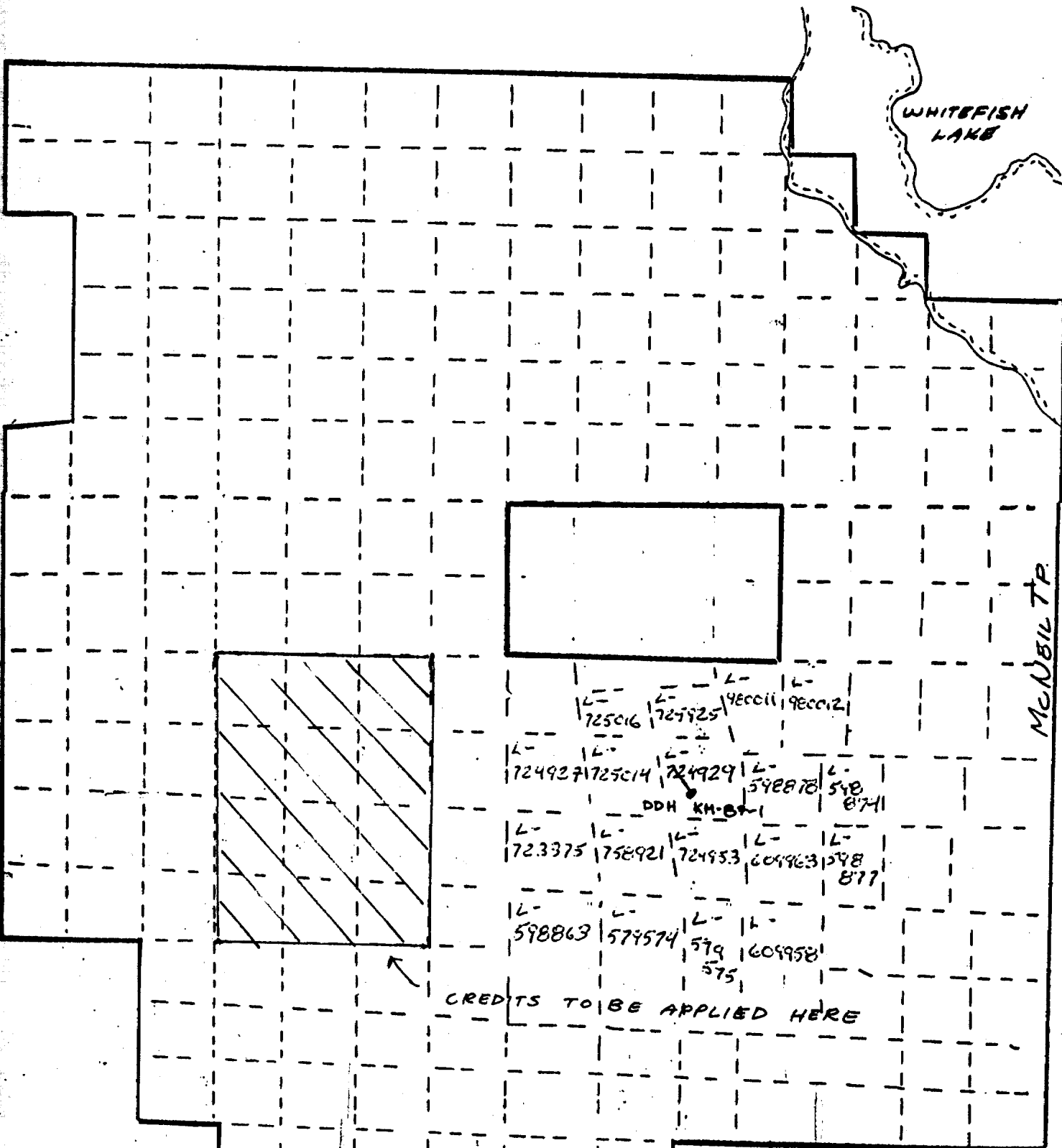
DIAMOND DRILL HOLE LOCATION SKETCH

DRILLED BY NEUMAC INDUSTRIES  
NQ DRILL CORE



MCNEIL TWP.  
SCALE 1:2500

*R.J. Fraser*



WHITEFISH LAKE



McNEIL TP.

ROBERTSON TP.

L- 725016 L- 727925 L- 980011 L- 980012  
 L- 724927 L- 725014 L- 724929 L- 548878 L- 548879  
 DDH KH-01  
 L- 723375 L- 758921 L- 724953 L- 604963 L- 548878  
 L- 598863 L- 574574 L- 579 L- 604958  
 575

CREDITS TO BE APPLIED HERE

McNEIL TP.  
ARGYLE TP.

KERR ADDISON MINES LTD  
FOX LAKE PROJECT

1 1/2 MI.

# DIAMOND DRILL RECORD

LOGGED BY R.T. FRASER

KERR ADDISON MINES LTD.

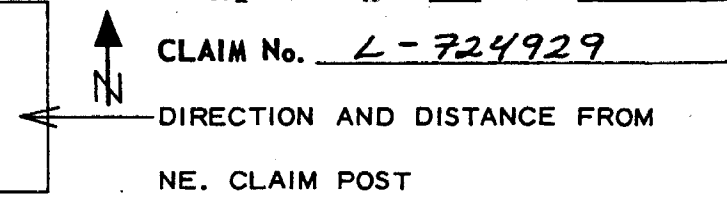
PROPERTY ARGYLE OPTION - McNEIL TOWNSHIP ONTARIO

D.D.H. No. KM-87-1 PAGE 1 OF 5

LATITUDE 3+28 5 BEARING OF HOLE 310° STARTED SEPT 1987

CLAIM No. L-724929

DEPARTURE 23+41 E DIP OF HOLE -45° COMPLETED SEPT 1987



ELEVATION \_\_\_\_\_ DIP TESTS NONE DEPTH 500'

DRILLED BY NEUMAC INDUSTRIES NQ DRILL CORE

FOOTAGE		DESCRIPTION	SAMPLE No.	FOOTAGE		SAMPLE LENGTH	ASSAY							
FROM	TO			FROM	TO									
0.0'	6.5'	<u>CASING:</u>												
6.5'	267.0'	<u>BASALT:</u>												
		<u>DARK GREEN IN COLOUR, FINE TO MEDIUM, GRAINED, GENERALLY MASSIVE.</u>												
		<u>SOMEWHAT MOTTLED IN APPEARANCE.</u>												
		<u>MODERATE CHLORITIC ALTERATION</u>												
		<u>LOCAL PATCHES WITH ABUNDANT LEUCOXENE</u>												
		<u>CARBONATE COMMON THROUGHOUT THE GROUNDMASS</u>												
		<u>NUMEROUS NARROW "BARREN LOOKING" QUARTZ-CARBONATE VEINS AND FRACTURE FILLINGS</u>												
		<u>THROUGHOUT THE SECTION.</u>												
		<u>6.5' - 15.0' 1-2% MAGNETITE AS GRAINS TO 3mm.</u>												
		<u>32.5' - 33.2' 1% PYRITE AS 1/2" FINE GRAINED AGGREGATES</u>												
		<u>36.0' - 44.2' STRONGLY MOTTLED AND BLEACHED</u>												

SAMPLE SERIES  
3801 - 3827  
27 SAMPLES - 104.2'

*R. Fraser*  
October 5/87

*R. Fraser*

# DIAMOND DRILL RECORD

LOGGED BY \_\_\_\_\_

PROPERTY ARGYLE OPTION - McNEIL TWP ONTARIO

LATITUDE \_\_\_\_\_ BEARING OF HOLE \_\_\_\_\_ STARTED \_\_\_\_\_

DEPARTURE \_\_\_\_\_ DIP OF HOLE \_\_\_\_\_ COMPLETED \_\_\_\_\_

ELEVATION \_\_\_\_\_ DIP TESTS \_\_\_\_\_ DEPTH \_\_\_\_\_

D.D.H. No. DDH # 1 PAGE 2 OF 5

CLAIM No. \_\_\_\_\_

DIRECTION AND DISTANCE FROM

NE. CLAIM POST



FOOTAGE		DESCRIPTION	SAMPLE No.	FOOTAGE		SAMPLE LENGTH	ASSAY			
FROM	TO			FROM	TO		ppb Au			
		TO A BUFF - LIGHT GRAY COLOUR. MODERATE CARBONATE ALTERATION.	3801	37.4'	39.9'	2.5'				
		39.9' - 41.5' - OCCASSIONAL NARROW QUARTZ - CARBONATE VEINLETS WITH 1-2% DISSEMINATED AND BLEBBY PYRITE.	3802	39.9'	41.5'	1.6'				
		72.0' - 77.0' - REPRESENTATIVE SAMPLE	3804	72.0'	77.0'	5.0'				
		127.0' - 132.0' - REPRESENTATIVE SAMPLE	3805	127.0'	132.0'	5.0'				
		168.0' - 180.0' - SILICIFIED AND BLEACHED BUT RETAINS MOTTLED APPEARANCE.	3806	168.0'	174.0'	6.0'				
		222.0' - 227.0' - REPRESENTATIVE SAMPLE	3808	222.0'	227.0'	5.0'				
		255.0' - 267.0' - SILICIFIED AND BLEACHED AS ABOVE WITH REMNANT MOTTLED TEXTURE LOCAL PATCHES WITH EMERALD GREEN FRAGMENTS? REMINISCENT OF FUCHSITE	3809	255.0'	261.0'	6.0'				
			3810	261.0'	267.0'	6.0'				
267.0'	268.1'	<u>FELSITE DYKE:</u> BUFF TO TAN IN COLOUR, EXTREMELY	3811	267.0'	268.1'	1.1'				

# DIAMOND DRILL RECORD

LOGGED BY \_\_\_\_\_

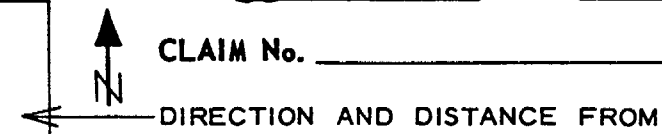
PROPERTY ARGYLE OPTION - McNEIL TOWNSHIP ONTARIO

D.D.H. No. DDH No. 1 PAGE 3 OF 5

LATITUDE \_\_\_\_\_ BEARING OF HOLE \_\_\_\_\_ STARTED \_\_\_\_\_

CLAIM No. \_\_\_\_\_

DEPARTURE \_\_\_\_\_ DIP OF HOLE \_\_\_\_\_ COMPLETED \_\_\_\_\_



ELEVATION \_\_\_\_\_ DIP TESTS \_\_\_\_\_ DEPTH \_\_\_\_\_

NE. CLAIM POST

FOOTAGE		DESCRIPTION	SAMPLE No.	FOOTAGE		SAMPLE LENGTH	ASSAY							
FROM	TO			FROM	TO		ppb Au							
		HARD, APHANITIC, SILICEOUS ROCK MASSIVE, NO APPARENT FOLIATION FEW DARK COLOURED MAFIC INCLUSIONS TO 2 MM IN SIZE. TRACE PYRITE THROUGHOUT CONTACTS SHARP, BUT IRREGULAR IN OUTLINE												
268.1'	278.2'	<u>BASALT:</u>	3812	268.1'	270.6'	2.5'								
		SIMILAR TO THAT FROM 267.0' - 268.1'	3813	275.7'	278.2'	2.5'								
278.2'	295.2'	<u>FELSITE DYKE:</u>	3814	278.2'	283.2'	5.0'								
		SIMILAR TO THAT FROM 267.0' - 268.1' BUT	3815	283.2'	288.2'	5.0'								
		WITH NO MAFIC INCLUSIONS	3816	288.2'	293.2'	5.0'								
		CONTACTS SHARP AND IRREGULAR	3817	293.2'	295.2'	2.0'								

# DIAMOND DRILL RECORD

LOGGED BY \_\_\_\_\_

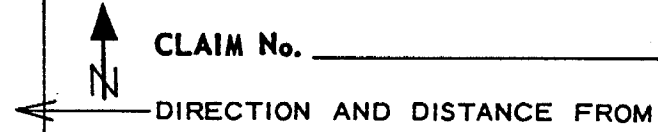
PROPERTY ARGYLE OPTION - McNEIL TOWNSHIP ONTARIO

D.D.H. No. DDH No. 1 PAGE 4 of 5

LATITUDE \_\_\_\_\_ BEARING OF HOLE \_\_\_\_\_ STARTED \_\_\_\_\_

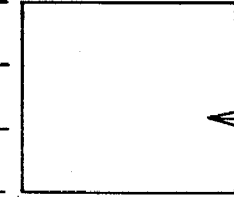
CLAIM No. \_\_\_\_\_

DEPARTURE \_\_\_\_\_ DIP OF HOLE \_\_\_\_\_ COMPLETED \_\_\_\_\_



ELEVATION \_\_\_\_\_ DIP TESTS \_\_\_\_\_ DEPTH \_\_\_\_\_

DIRECTION AND DISTANCE FROM  
NE. CLAIM POST



FOOTAGE		DESCRIPTION	SAMPLE No.	FOOTAGE		SAMPLE LENGTH	ASSAY							
FROM	TO			FROM	TO		ppb Au							
295.2'	4728'	<u>BASALT:</u>	3818	295.2'	297.7'	2.5'								
		SIMILAR TO THAT FROM 6.5' - 267.0' AND												
		268.1' - 278.2'												
		319.0' - 320.2' - WEAKLY SHEARED WITH												
		MODERATE TO STRONG CHLORITE AND EPIDOTE												
		ALTERATION. TRACE PYRITE												
		327.0' - 332.0' REPRESENTATIVE SAMPLE	3819	327.0'	332.0'	5.0'								
		377.0' - 382.0' REPRESENTATIVE SAMPLE	3820	377.0'	382.0'	5.0'								
		422.0' - 427.0' REPRESENTATIVE SAMPLE	3821	422.0'	427.0'	5.0'								
		@ 467.0' - ROCK BECOMES A TRUE PILLOW LAVA												
		WITH NUMEROUS VESICLES WITHIN THE PILLOWS.												
		RIMS ARE HIGHLY CONTORTED AND BRECCIATED	3822	470.3'	472.8'	2.5'								
472.8'	4858'	<u>FELSITE DYKE:</u>	3823	472.8'	474.2'	1.4'								
		MEDIUM BROWN IN COLOUR, AFHANITIC AND												
		SILICEOUS.												
		SHARP CONTACT WITH ENCLOSING MAFIC												



# DIAMOND DRILL RECORD

LOGGED BY \_\_\_\_\_

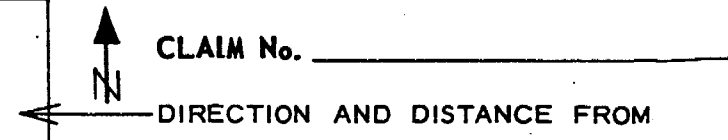
PROPERTY ARGYLE OPTION - McNEIL TOWNSHIP ONTARIO

D.D.H. No. DDH No. 1 PAGE 5 OF 5

LATITUDE \_\_\_\_\_ BEARING OF HOLE \_\_\_\_\_ STARTED \_\_\_\_\_

CLAIM No. \_\_\_\_\_

DEPARTURE \_\_\_\_\_ DIP OF HOLE \_\_\_\_\_ COMPLETED \_\_\_\_\_



ELEVATION \_\_\_\_\_ DIP TESTS \_\_\_\_\_ DEPTH \_\_\_\_\_

FOOTAGE		DESCRIPTION	SAMPLE No.	FOOTAGE		SAMPLE LENGTH	ASSAY						
FROM	TO			FROM	TO		pph Au						
		VOLCANIC ROCKS.											
		TRACE PYRITE.											
		@ 474.2' BECOMES BUFF TO PALE BROWN	3824	474.2'	479.2'	5.0'							
		IN COLOUR	3825	479.2'	484.2'	5.0'							
		LOWER CONTACT SHARP BUT IRREGULAR	3826	484.2'	485.8'	1.6'							
485.8'	500.0'	<u>PILLOWED BASALTS:</u>	3827	485.8'	488.3'	2.5'							
		SIMILAR TO THOSE ABOVE.											
500.0'		<u>END OF HOLE:</u>											

# DIAMOND DRILL RECORD

LOGGED BY R.T. FRASER

KERR ADDISON MINES LTD.

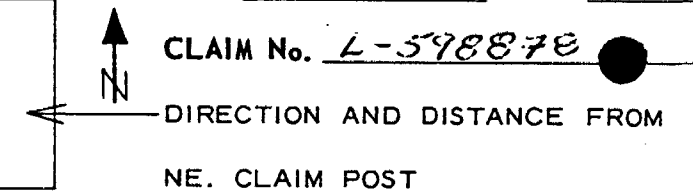
PROPERTY MANVILLE CLAIMS - CHUTINE OPTION - McNEIL TP ONTARIO

D.D.H. No. KM-87-2 PAGE 1 of 1

LATITUDE 2+40 S BEARING OF HOLE 310° STARTED SEPT. 22/87

CLAIM No. L-59887E

DEPARTURE 34+96 E DIP OF HOLE -45° COMPLETED SEPT. 26/87



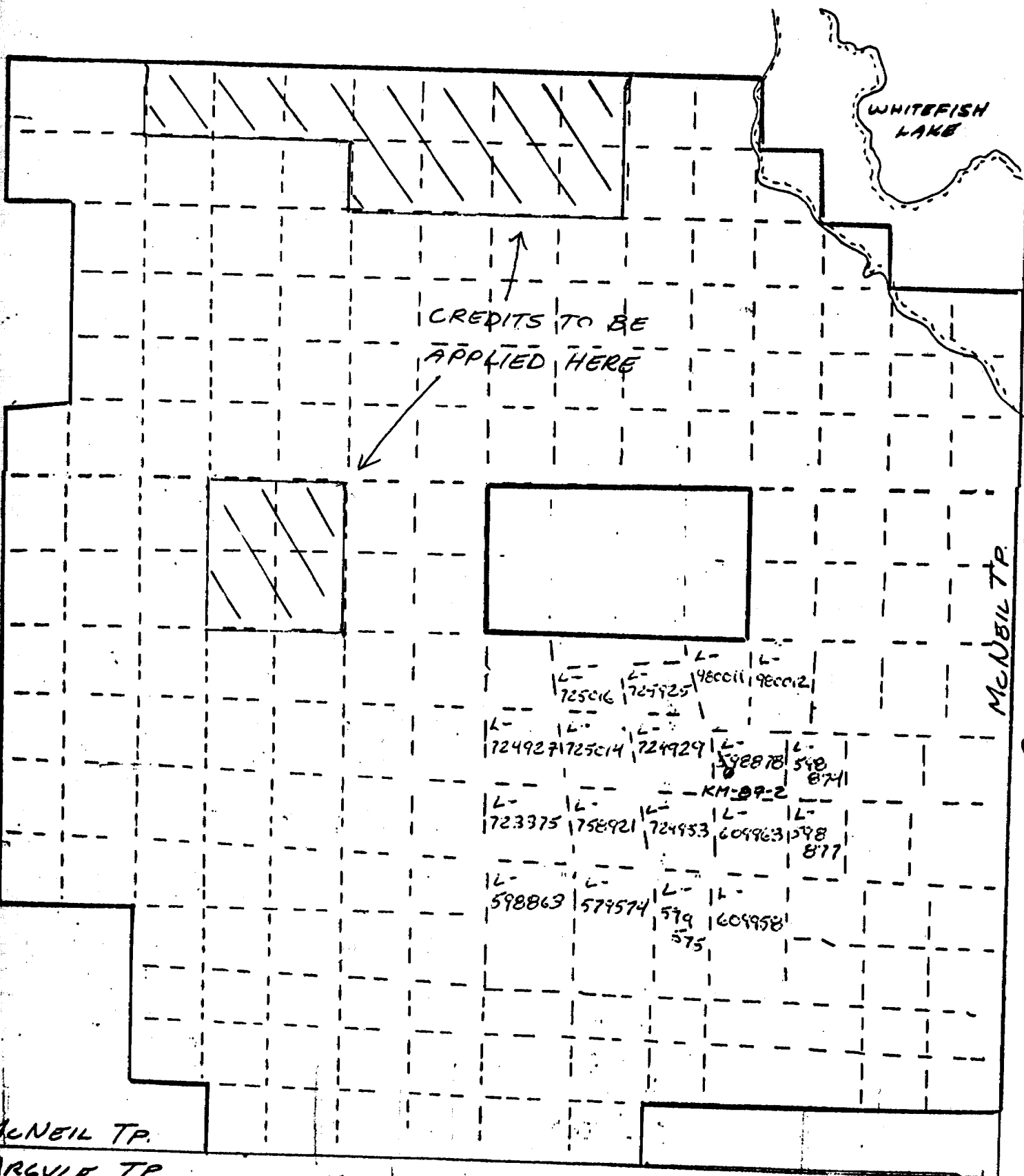
ELEVATION \_\_\_\_\_ DIP TESTS NONE DEPTH 598'

*Drilled By NEUMAC INDUSTRIES NQ DRILL CORE.*

FOOTAGE		DESCRIPTION	SAMPLE No.	FOOTAGE		SAMPLE LENGTH	ASSAY			
FROM	TO			FROM	TO					
<u>SUMMARY DRILL LOG</u>										
0.0'	29.0'	CASING								
29.0'	147.5'	MAFIC VOLCANIC FLOWS:								
147.5'	167.2'	FELSITE DYKE:								
167.2'	310.7'	MAFIC VOLCANIC FLOWS:								
310.7'	324.2'	FELSITE DYKE:								
324.2'	431.2'	MAFIC VOLCANIC FLOWS:								
431.2'	440.0'	FELSITE DYKE:								
440.0'	491.9'	MAFIC VOLCANIC FLOWS:								
491.9'	501.0'	CONGLOMERATE:								
501.0'	536.5'	MAFIC VOLCANIC FLOWS:								
536.5'	575.0'	CONGLOMERATE:								
575.0'	598.0'	MAFIC VOLCANIC FLOWS:								
598.0'		END OF HOLE:								
<u>ALL CASING REMOVED.</u>										

*R.J. Fraser*  
October 11/87.

*R.J. Fraser*



WHITEFISH LAKE

CREDITS TO BE APPLIED HERE

McNEIL TP.  
ROBERTSON TP.

L- L- L- L-  
 725016 725925 980011 980012  
 L- L- L- L-  
 724927 725014 724929 598878 598  
 8741  
 L- L- L- L-  
 723375 725892 724953 609963 598  
 877  
 L- L- L- L-  
 598863 579574 579 609958  
 575

McNEIL TP.  
ARGYLE TP.

KERR ADDISON MINES LTD  
FOX LAKE PROJECT

1 1/2 MI.

# DIAMOND DRILL HOLE RECORD

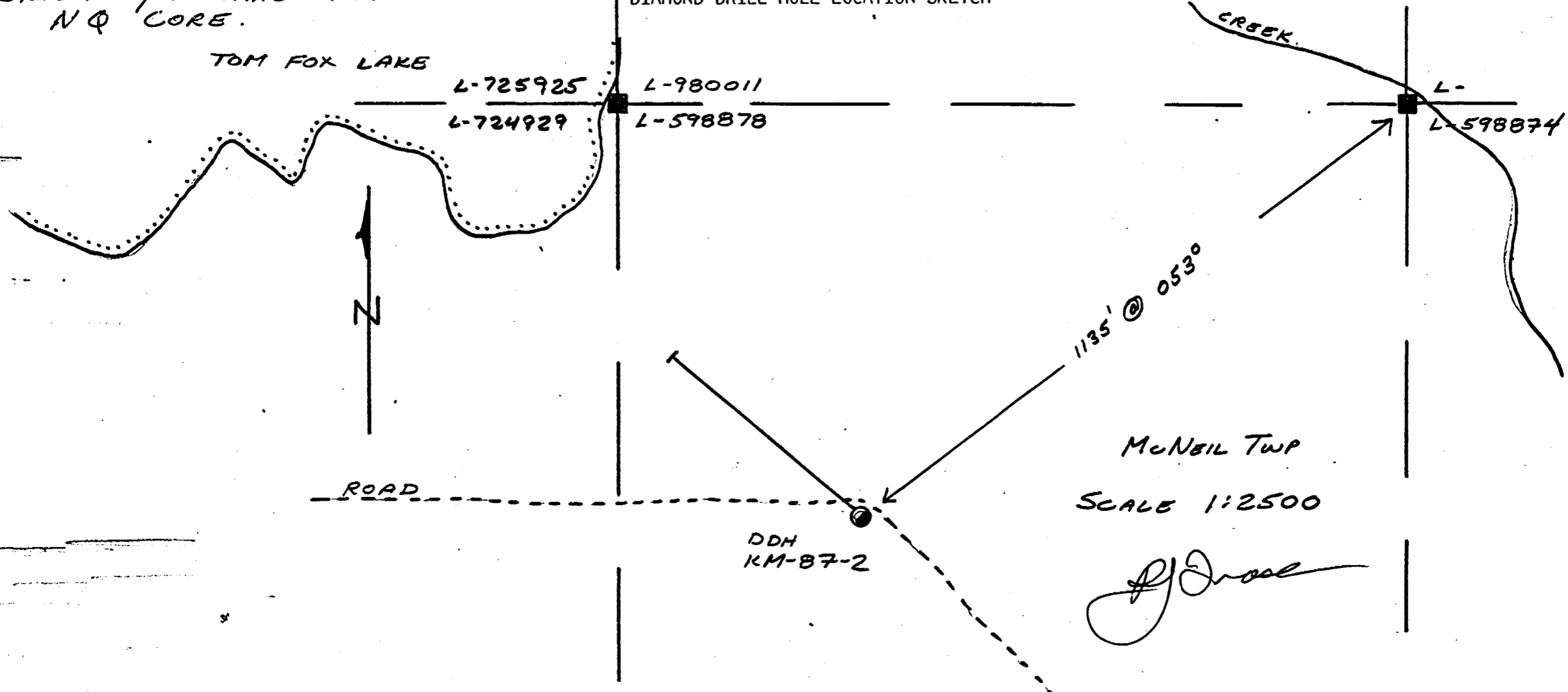
PROJECT 785 LAKE ONS

HOLE No. KM-87-2

LOCATION		DIP TEST		LEVEL	HORIZONTAL COMPONENT	DATE STARTED
AREA or TWP.	FOOTAGE	ANGLE			VERTICAL COMPONENT	DATE FINISHED
CLAIM NO.		RECORDING	CORRECTED	ELEVATION	BEARING	LOGGED BY:
McNEIL TP.					310°	SEPT 22 / 87
L-598878				LATITUDE 2+405	LENGTH 598'	SEPT 26 / 87
HTS 42-A-2				DEPARTURE 34+96E	CORE LOCATION KERR MINE VIRGINIATOWN ONT	PURPOSE
						TOT. RECOVERY

Drilled By NEUMAC INDUSTRIES  
NØ CORE.

DIAMOND DRILL HOLE LOCATION SKETCH



# DIAMOND DRILL RECORD

LOGGED BY R.T. FRASER

KERR ADDISON MINES LTD.

PROPERTY MANVILLE CLAIMS - CHUTINE OPTION - McNEIL TP. ONTARIO

LATITUDE 2+40S BEARING OF HOLE 310° STARTED SEPT 22/87

DEPARTURE 34+96 E DIP OF HOLE -45° COMPLETED SEPT 26/87

ELEVATION \_\_\_\_\_ DIP TESTS NONE DEPTH 598'

D.D.H. No. KM-87-2 PAGE 1 of 7

CLAIM No. L-598878



DIRECTION AND DISTANCE FROM

NE. CLAIM POST

DRILLED BY NEUMAC INDUSTRIES NO DRILL CORE.

FOOTAGE		DESCRIPTION	SAMPLE No.	FOOTAGE		SAMPLE LENGTH	ASSAY							
FROM	TO			FROM	TO									
0.0	29.0'	CASING												
29.0'	147.5'	MAFIC VOLCANIC FLOWS:												
		MID TO DARK GREEN IN COLOUR, FINE GRAINED, FAIRLY HOMOGENEOUS ROCK. LACKS ANY PROMINANT STRUCTURE OR FABRIC.												
		ROCK IS RELATIVELY SOFT AND HAS BEEN MODERATELY CHLORITIZED.												
		CUT BY A NETWORK OF QUARTZ, QUARTZ-CARBONATE AND QUARTZ-EPIDOTE FILLED FRACTURES, APPROXIMATELY 1mm IN WIDTH												
		SULPHIDES RARE, BUT OCCUR AS SMALL FINE GRAINED AGGREGATES, AND DISSEMINATIONS OF PYRITE.												
		OCCASIONAL NARROW, <10cm, BLEACHED SECTIONS DUE TO SILICIFICATION.												

*R. Fraser*  
October 11/87

SAMPLE SERIES 3823-3854  
27 SAMPLES 103.1'

*R. Fraser*

# DIAMOND DRILL RECORD

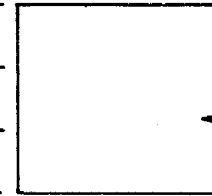
LOGGED BY \_\_\_\_\_

PROPERTY MANVILLE CLAIMS - CHUTINE OPTION McNEIL TP.

LATITUDE \_\_\_\_\_ BEARING OF HOLE \_\_\_\_\_ STARTED \_\_\_\_\_

DEPARTURE \_\_\_\_\_ DIP OF HOLE \_\_\_\_\_ COMPLETED \_\_\_\_\_

ELEVATION \_\_\_\_\_ DIP TESTS \_\_\_\_\_ DEPTH \_\_\_\_\_



D.D.H. No. KM-87-2 PAGE 2 OF 7



CLAIM No. \_\_\_\_\_

DIRECTION AND DISTANCE FROM

NE. CLAIM POST

FOOTAGE		DESCRIPTION	SAMPLE No.	FOOTAGE		SAMPLE LENGTH	ASSAY			
FROM	TO			FROM	TO					
	57.0'	62.0'	3828	57.0'	62.0'	5.0'				
	84.8'	98.2'								
	A FLOW TOP OR INTERPILLOW BRECCIA									
	107.0'	112.0'	3829	107.0'	112.0'	5.0'				
	121.0'	130.5'								
	WEAK POTASSIC ALTERATION IN THE GROUNDMASS. TRACES OF HEMATITE. UPPER CONTACT OF ALTERATION APPEARS SHARP BUT BROKEN CORE PRECLUDES MEASUREMENT OF ANY ATTITUDE. LOWER CONTACT GRADATIONAL.									
			3830	145.0'	147.5'	2.5'				
147.5'	147.5'	<u>FELSITE DYKE</u>	3831	147.5'	152.5'	5.0'				
		RUFF TO PALE BROWN IN COLOUR,	3832	152.5'	157.5'	5.0'				
		EXTREMELY FINE GRAINED TO APHANITIC.	3833	157.5'	158.9'	1.4'				
		POSSIBLY AN EXTREMELY FINE GRAINED FELDSPAR PORPHYRY.								
		STRUCTURELESS, RELATIVELY HOMOGENEOUS.								

# DIAMOND DRILL RECORD

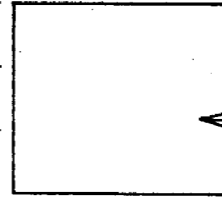
LOGGED BY \_\_\_\_\_

PROPERTY MANVILLE CLAIMS - CHUTINE OPTION - McNEIL TP.

LATITUDE \_\_\_\_\_ BEARING OF HOLE \_\_\_\_\_ STARTED \_\_\_\_\_

DEPARTURE \_\_\_\_\_ DIP OF HOLE \_\_\_\_\_ COMPLETED \_\_\_\_\_

ELEVATION \_\_\_\_\_ DIP TESTS \_\_\_\_\_ DEPTH \_\_\_\_\_



D.D.H. No. KM-87-2 PAGE 30 OF 7

CLAIM No. \_\_\_\_\_

DIRECTION AND DISTANCE FROM

NE. CLAIM POST

FOOTAGE		DESCRIPTION	SAMPLE No.	FOOTAGE		SAMPLE LENGTH	ASSAY							
FROM	TO			FROM	TO									
		CUT BY A FEW QUARTZ VEINLETS, COMMONLY WITH TRACES OF PYRITE. ~1% DISSEMINATED PYRITE THROUGHOUT THE UNIT												
		158.9' - 163.2' MAFIC VOLCANIC INCLUSION, WEAKLY FOLIATED @ 45° TO THE CORE AXIS MODERATELY BLEACHED DUE TO SILICIFICATION	3834	158.9'	163.2'	4.3'								
		163.2' - 167.2' MAFIC VOLCANIC INCLUSION, WEAKLY FOLIATED @ 45° TO THE CORE AXIS MODERATELY BLEACHED DUE TO SILICIFICATION	3835	163.2'	167.2'	4.0'								
167.2'	310.7'	MAFIC VOLCANIC FLOWS: SIMILAR TO THAT FROM 29.0' - 147.5' MINOR K-SPAR THREADS USUALLY ASSOCIATED WITH QUARTZ FILLED FRACTURES UPPER CONTACT BLEACHED DUE TO SILICIFICATION. ~1% PYRITE AS FINE GRAINED AGGREGATES AND DISSEMINATIONS	3836	167.2'	169.7'	2.5'								
		197.0' - 202.0' REPRESENTATIVE SAMPLE	3837	197.0'	202.0'	5.0'								

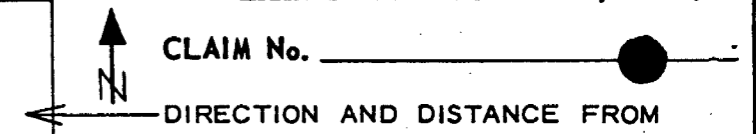
# DIAMOND DRILL RECORD

LOGGED BY \_\_\_\_\_

PROPERTY MANVILLE CLAIMS - CHUTINE OPTION - McNEIL TP

D.D.H. No. KM-87-2 PAGE 4 of 7

LATITUDE \_\_\_\_\_ BEARING OF HOLE \_\_\_\_\_ STARTED \_\_\_\_\_



DEPARTURE \_\_\_\_\_ DIP OF HOLE \_\_\_\_\_ COMPLETED \_\_\_\_\_

ELEVATION \_\_\_\_\_ DIP TESTS \_\_\_\_\_ DEPTH \_\_\_\_\_

FOOTAGE		DESCRIPTION	SAMPLE No.	FOOTAGE		SAMPLE LENGTH	ASSAY			
FROM	TO			FROM	TO					
		253.3' - 270.2' PORPHYRITIC FLOW WITH SUBANGULAR SODIC FELDSPAR CRYSTALS TO 3 mm.	3838	267.7'	270.2'	2.5'				
		270.2' - 281.5' STRONGLY FRACTURED WITH ABUNDANT QUARTZ, QUARTZ-CARBONATE AND EPIDOTE THREADS. GROUND MASS STRONGLY CARBONATED UP TO 2% PYRITE AS IRREGULAR MASSES AND THREADS	3839	270.2'	275.2'	5.0'				
			3840	275.2'	281.5'	6.3'				
			3841	281.5'	284.0'	2.5'				
			3842	308.2'	310.7'	2.5'				
310.7'	324.2'	<u>FELSITE DYKE</u>	3843	310.7'	315.7'	5.0'				
		SIMILAR TO THAT FROM 147.5' - 167.2'	3844	315.7'	320.7'	5.0'				
		CUT BY A FEW NARROW QUARTZ-CARBONATE VEINLETS	3845	320.7'	324.2'	3.5'				
		TRACE PYRITE THROUGHOUT.								
324.2'	431.2'	<u>MAFIC VOLCANIC FLOWS:</u>	3846	324.2'	326.7'	2.5'				
		SIMILAR TO THAT ABOVE								



# DIAMOND DRILL RECORD

LOGGED BY \_\_\_\_\_

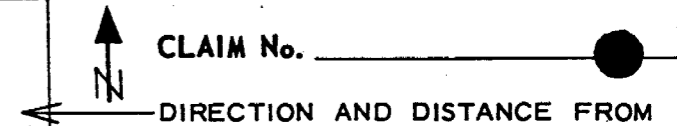
PROPERTY MANVILLE CLAIMS - CHUTINE OPTION - McNEIL TP.

D.D.H. No. KM-87-2 PAGE 5077

LATITUDE \_\_\_\_\_ BEARING OF HOLE \_\_\_\_\_ STARTED \_\_\_\_\_

CLAIM No. \_\_\_\_\_

DEPARTURE \_\_\_\_\_ DIP OF HOLE \_\_\_\_\_ COMPLETED \_\_\_\_\_



ELEVATION \_\_\_\_\_ DIP TESTS \_\_\_\_\_ DEPTH \_\_\_\_\_

NE. CLAIM POST

FOOTAGE		DESCRIPTION	SAMPLE No.	FOOTAGE		SAMPLE LENGTH	ASSAY						
FROM	TO			FROM	TO								
		UPPER CONTACT STRONGLY SHEARED @ 30° TO THE CORE AXIS.											
		377.0' - 382.0' REPRESENTATIVE SAMPLE	3847	377.0'	382.0'	5.0'							
			3848	4287'	4312'	2.5'							
431.2'	440.0'	<u>FELSITE DYKE</u>	3849	431.2'	436.2'	5.0'							
		SIMILAR TO THAT ABOVE	3850	436.2'	440.0'	3.8'							
		CRUDE LAYERING LOCALLY PRESENT @ 65° TO THE CORE AXIS.											
440.0'	491.9'	<u>MAFIC VOLCANIC FLOWS</u>	3851	440.0'	442.5'	2.5'							
		SIMILAR TO THAT ABOVE											
		UPPER CONTACT STRONGLY SHEARED @ 50° TO THE CORE AXIS.	3852	489.4'	491.9'	2.5'							
491.9'	501.0'	<u>CONGLOMERATE:</u>	3853	491.9'	496.7'	4.8'							
		PINK COLOURED, COARSE CLASTIC ROCK.	3854	496.7'	499.2'	2.5'							

# DIAMOND DRILL RECORD

LOGGED BY \_\_\_\_\_

PROPERTY MANVILLE CLAIMS - CHUTINE OPTION - McNEIL TP.

D.D.H. No. KM-87-2 PAGE 6 OF 7

LATITUDE \_\_\_\_\_ BEARING OF HOLE \_\_\_\_\_ STARTED \_\_\_\_\_

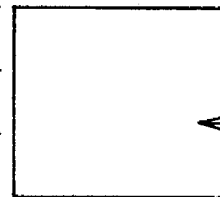
CLAIM No. \_\_\_\_\_

DEPARTURE \_\_\_\_\_ DIP OF HOLE \_\_\_\_\_ COMPLETED \_\_\_\_\_

DIRECTION AND DISTANCE FROM

ELEVATION \_\_\_\_\_ DIP TESTS \_\_\_\_\_ DEPTH \_\_\_\_\_

NE. CLAIM POST



FOOTAGE		DESCRIPTION	SAMPLE No.	FOOTAGE		SAMPLE LENGTH	ASSAY							
FROM	TO			FROM	TO									
		CONSISTS OF CLASTS OF BOTH MAFIC VOLCANICS AND GRANITIDS TO 1" DIAMETER. IN A DARK COLOURED MAFIC AND CRITTY MATRIX.												
		PINK COLOURATION DUE TO STRONG POTASSIC ALTERATION.												
		UPPER AND LOWER CONTACTS SHARP @												
		5-10° TO THE CORE AXIS.												
		TRACE PYRITE THROUGHOUT.												
5010'	5365'	<u>MAFIC VOLCANIC FLOWS.</u>												
		SIMILAR TO THAT ABOVE:												
5365'	5750'	<u>CONGLOMERATE.</u>												
		SIMILAR TO THAT ABOVE.												
		UPPER AND LOWER CONTACTS APPROXIMATE												
		10° TO THE CORE AXIS.												
		TRACE PYRITE												

# DIAMOND DRILL RECORD

LOGGED BY \_\_\_\_\_

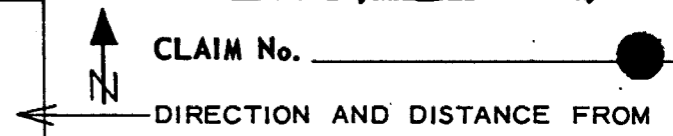
PROPERTY MANVILLE CLAIMS - CHUTE OPTION - McNEIL TP.

D.D.H. No. KM-87-2 PAGE 7 of 7

LATITUDE \_\_\_\_\_ BEARING OF HOLE \_\_\_\_\_ STARTED \_\_\_\_\_

CLAIM No. \_\_\_\_\_

DEPARTURE \_\_\_\_\_ DIP OF HOLE \_\_\_\_\_ COMPLETED \_\_\_\_\_



ELEVATION \_\_\_\_\_ DIP TESTS \_\_\_\_\_ DEPTH \_\_\_\_\_

NE. CLAIM POST

FOOTAGE		DESCRIPTION	SAMPLE No.	FOOTAGE		SAMPLE LENGTH	ASSAY						
FROM	TO			FROM	TO								
575.0'	5980'	<u>MAFIC VOLCANIC FLOWS</u> <u>SIMILAR TO THAT ABOVE</u>											
5980'		<u>END OF HOLE</u> <u>ALL CASING REMOVED</u>											

# DIAMOND DRILL RECORD

LOGGED BY R.J. FRASER

KERR ADDISON MINES LTD.

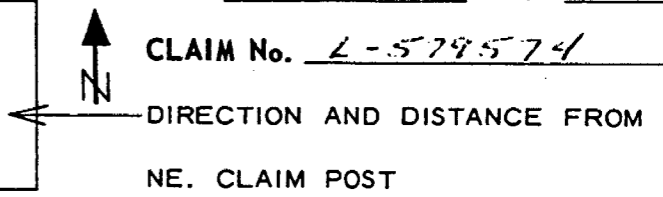
PROPERTY MANVILLE CLAIMS - CHUTE OPTION - McNEIL TWP ONTARIO

D.D.H. No. KM-87-3 PAGE 1 OF 1

LATITUDE 24±11 S BEARING OF HOLE 030° STARTED SEPT. 27/87

CLAIM No. L-579574

DEPARTURE 11747 E DIP OF HOLE -45° COMPLETED OCT. 2/87



ELEVATION \_\_\_\_\_ DIP TESTS NONE DEPTH 500'

DRILLED BY NEWMAC INDUSTRIES

NQ DRILL CORE

FOOTAGE		DESCRIPTION	SAMPLE No.	FOOTAGE		SAMPLE LENGTH	ASSAY			
FROM	TO			FROM	TO					
<u>SUMMARY DRILL LOG</u>										
0.0'	3.0'	CASING:								
3.0'	27.5'	QUARTZ PORPHYRY								
27.5'	130.7'	SILICEOUS SEDIMENTS								
130.7'	153.3'	QUARTZ PORPHYRY.								
153.3'	166.8'	SILICEOUS SEDIMENTS								
166.8'	191.0'	FELSITE								
191.0'	212.5'	SILICEOUS SEDIMENTS								
212.5'	480.4'	INTERMEDIATE VOLCANIC ROCKS								
480.4'	500.0'	MAFIC VOLCANIC FLOWS								
500.0'		END OF HOLE:								

*[Handwritten signature]*

*[Handwritten signature]*  
October 31, 1987

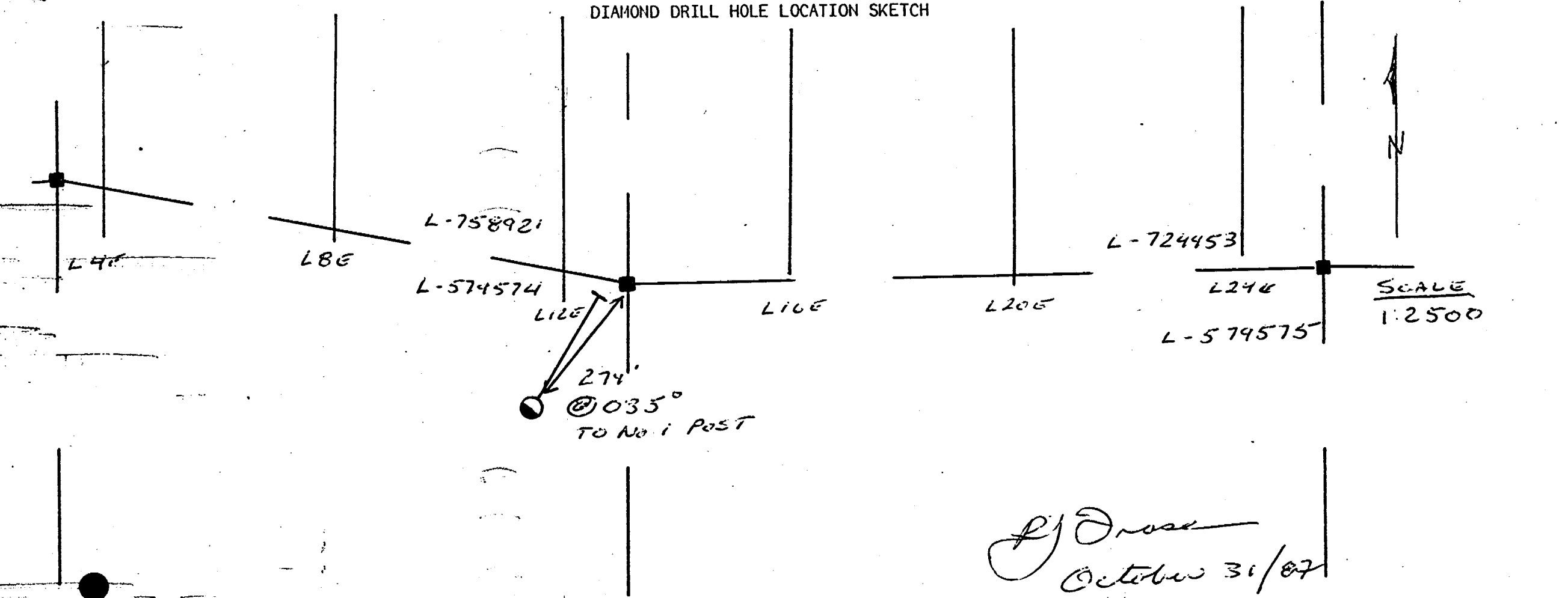
COPY

# DIAMOND DRILL HOLE RECORD

HOLE No. KM-07-3

LOCATION	DIP TEST		LEVEL	HORIZONTAL COMPONENT	DATE STARTED <u>SEPT 29/87</u>
AREA or TWP. <u>Mc NEIL T.P.</u>	FOOTAGE	ANGLE	ELEVATION	VERTICAL COMPONENT	DATE FINISHED <u>OCT 2/87.</u>
CLAIM NO. <u>L-579574</u>		RECORDING			CORRECTED
NTS <u>42-A-2</u>			LATITUDE <u>24+11 S</u>	LENGTH <u>500'</u>	PURPOSE
			DEPARTURE <u>11+47 E</u>	CORE LOCATION <u>KERR MINE VIRGINIATOWN</u>	TOT. RECOVERY

DIAMOND DRILL HOLE LOCATION SKETCH



WHITEFISH LAKE

CREDITS TO BE APPLIED HERE

McNEIL TP  
ROBERTSON TP

L-	L-	L-	L-	L-
725016	725925	980011	980012	
L-	L-	L-	L-	L-
724927	725014	724929	598870	548
				8771
L-	L-	L-	L-	L-
723375	758921	724953	604963	1548
				877
L-	L-	L-	L-	L-
598863	575874	579	604958	
				575

McNEIL TP.  
ARGYLE TP.

KERR ADDISON MINES LTD  
FOX LAKE PROJECT

1 1/2 MI.

# DIAMOND DRILL RECORD

LOGGED BY R.J. FRASER

KERR ADDISON MINES LTD.

PROPERTY MANVILLE CLAIMS - CHUTE OUTFALL - McNEIL TP ONTARIO

D.D.H. No. KM-87-3 PAGE 1 OF 6

LATITUDE 24°11'S BEARING OF HOLE 030° STARTED SEPT. 21/87

CLAIM No. L-579574

DEPARTURE 11+47E DIP OF HOLE -45° COMPLETED OCT. 2/87



DIRECTION AND DISTANCE FROM

ELEVATION \_\_\_\_\_ DIP TESTS NONE DEPTH 500'

NE. CLAIM POST

*DRILLED BY NEUMAR INDUSTRIES*

*NE DRILL CORE*

FOOTAGE		DESCRIPTION	SAMPLE No.	FOOTAGE		SAMPLE LENGTH	ASSAY						
FROM	TO			FROM	TO								
0.0'	3.0'	<u>CASING:</u>											
3.0'	27.5'	<u>QUARTZ PORPHYRY:</u> PALE GREEN TO BUFF IN COLOUR, VERY SILICEOUS AND MASSIVE. GROUNDMASS VERY FINE GRAINED TO APHANITIC. FEW ROUNDED QUARTZ EYES, PALE GRAY IN COLOUR, TO 1CM DIAMETER. NUMEROUS CHLORITIC CLOTS UP TO 3MM IN LENGTH, GENERALLY SHOWING A PREFERRED ORIENTATION @ 45° TO THE CORE AXIS. TRACE PYRITE THROUGHOUT @ 15.5' BECOMES MODERATELY ALTERED WITH A SOMEWHAT MOTTLED APPEARANCE DUE TO WEAK CHLORITIZATION, SILICIFICATION AND EPIDOTE.											
						SAMPLE SERIES 38.55 - 3870 16 SAMPLES - 72.4'							

*J. Fraser*  
*J. Fraser*  
October 31, 1987.





# DIAMOND DRILL RECORD

LOGGED BY \_\_\_\_\_

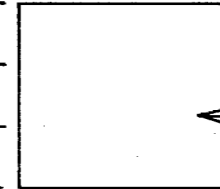
PROPERTY MANVILLE CLAIMS - CHUTINE OPTION - McNEIL TP

D.D.H. No. KM-87-3 PAGE 3 OF 6

LATITUDE \_\_\_\_\_ BEARING OF HOLE \_\_\_\_\_ STARTED \_\_\_\_\_

DEPARTURE \_\_\_\_\_ DIP OF HOLE \_\_\_\_\_ COMPLETED \_\_\_\_\_

ELEVATION \_\_\_\_\_ DIP TESTS \_\_\_\_\_ DEPTH \_\_\_\_\_



CLAIM No. \_\_\_\_\_  
 DIRECTION AND DISTANCE FROM  
 NE. CLAIM POST

FOOTAGE		DESCRIPTION	SAMPLE No.	FOOTAGE		SAMPLE LENGTH	ASSAY				
FROM	TO			FROM	TO		ppb Au				
		99.6' - 130.7' STRONGLY BLEACHED TO A PALE YELLOW-BUFF COLOUR. BEDDING INTENSELY FAULTED ON A CM SCALE. BEDDING VARIABLE FROM 0°-20° TO THE CORE AXIS. FEW NARROW CROSSCUTTING QUARTZ VEINLETS. TRACE PYRITE.	3857	99.6'	104.6'	5.0'					
			3858	104.6'	109.6'	5.0'					
			3859	109.6'	114.6'	5.0'					
			3860	114.6'	119.6'	5.0'					
			3861	119.6'	124.6'	5.0'					
			3862	124.6'	130.7'	6.1'					
130.7'	153.3'	QUARTZ PORPHYRY: SIMILAR TO THAT FROM 3.0' - 27.5' BUT OVERALL SHOWS LESS ALTERATION. TRACE PYRITE THROUGHOUT. ALTERATION INCREASES WITH DEPTH WITH A TENDENCY FOR THE UNIT TO RESEMBLE A WACKE.									
		140.3' - 153.3' WEAK TO MODERATE K-SPAR ALTERATION.	3863	140.3'	145.3'	5.0'					
			3864	145.3'	150.3'	5.0'					
			3865	150.3'	153.3'	3.0'					

# DIAMOND DRILL RECORD

LOGGED BY \_\_\_\_\_

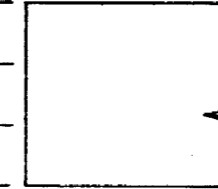
PROPERTY MANVILLE CLAIMS - CHUTINE OPTION - McNEIL TP.

D.D.H. No. KM-87-3 PAGE 4 OF 6

LATITUDE \_\_\_\_\_ BEARING OF HOLE \_\_\_\_\_ STARTED \_\_\_\_\_

DEPARTURE \_\_\_\_\_ DIP OF HOLE \_\_\_\_\_ COMPLETED \_\_\_\_\_

ELEVATION \_\_\_\_\_ DIP TESTS \_\_\_\_\_ DEPTH \_\_\_\_\_



CLAIM No. \_\_\_\_\_  
 DIRECTION AND DISTANCE FROM  
 NE. CLAIM POST

FOOTAGE		DESCRIPTION	SAMPLE No.	FOOTAGE		SAMPLE LENGTH	ASSAY				
FROM	TO			FROM	TO						
153.3'	166.8'	<u>SILICEOUS SEDIMENTS (SILTSTONE?)</u> SIMILAR TO THAT FROM 27.5' - 130.7' WELL BEDDED @ 0° - 15° TO THE CORE AXIS.  STRONGLY BLEACHED TO A PALE YELLOW COLOUR.									
166.8'	191.0'	<u>FELSITE:</u> VERY SILICEOUS, FINE GRAINED TO APHANITIC ROCK.  PALE YELLOW GREEN TO BUFF IN COLOUR.  MODERATELY FRACTURED WITH OCCASIONAL QUARTZ INFILLINGS  LOCAL PATCHES OF K-SPAR ALTERATION 173.4' - 177.7' - 15% MILKY WHITE QUARTZ VEINS.	3866	166.8'	171.8'	5.0'					
			3867	171.8'	173.4'	1.6'					
			3868	173.4'	177.7'	4.3'					
			3869	177.7'	182.7'	5.0'					
			3870	182.7'	187.7'	5.0'					





# DIAMOND DRILL RECORD

LOGGED BY R. J. FRASER KERR ADDISON MINES LTD.

PROPERTY MANVILLE CLAIMS - CHUTEAU CATION - McNEIL TWP. ONTARIO

D.D.H. No. KM-87-4 PAGE 1 OF 1

LATITUDE 22+47 S BEARING OF HOLE 210° STARTED OCT. 4/87

CLAIM No. L-579574

DEPARTURE 11+02 E DIP OF HOLE -45° COMPLETED OCT 7/87

DIRECTION AND DISTANCE FROM

ELEVATION \_\_\_\_\_ DIP TESTS NONE DEPTH 502'

NE. CLAIM POST

*DRILLED BY NEWMAK INDUSTRIES*

*1 1/2" DRILL CORE*

FOOTAGE		DESCRIPTION	SAMPLE No.	FOOTAGE		SAMPLE LENGTH	ASSAY						
FROM	TO			FROM	TO								
		<u>SUMMARY DRILL LOG</u>											
		<u>BEDROCK SETUP</u>											
<u>0.0'</u>	<u>108.2'</u>	<u>MAFIC VOLCANIC FLOWS</u>											
<u>108.2'</u>	<u>142.0'</u>	<u>FELSITE</u>											
<u>142.0'</u>	<u>502.0'</u>	<u>MAFIC VOLCANIC FLOWS</u>											
<u>502.0'</u>		<u>END OF HOLE.</u>											

*R. J. Fraser*  
*October 31/87*

**COPY**

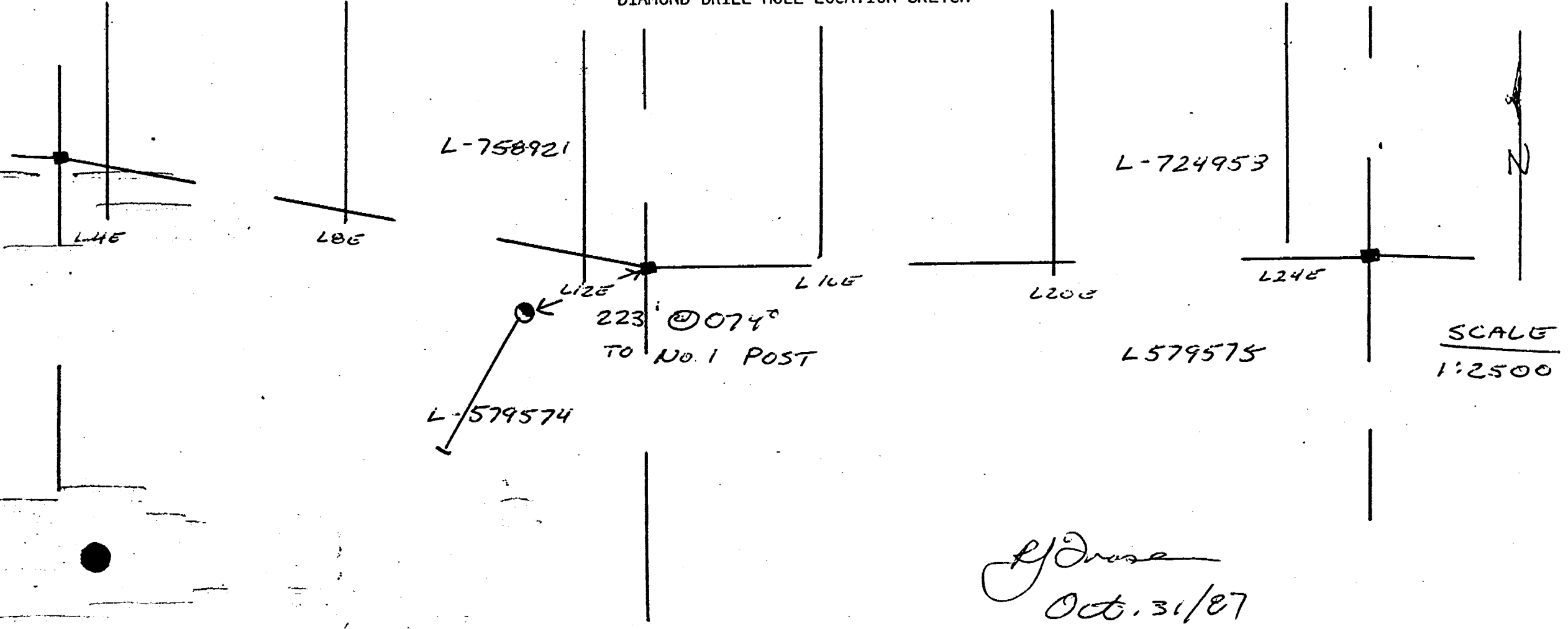
# KERR ADDISON MINES LTD DIAMOND DRILL HOLE RECORD

PROJECT FOR LAKE

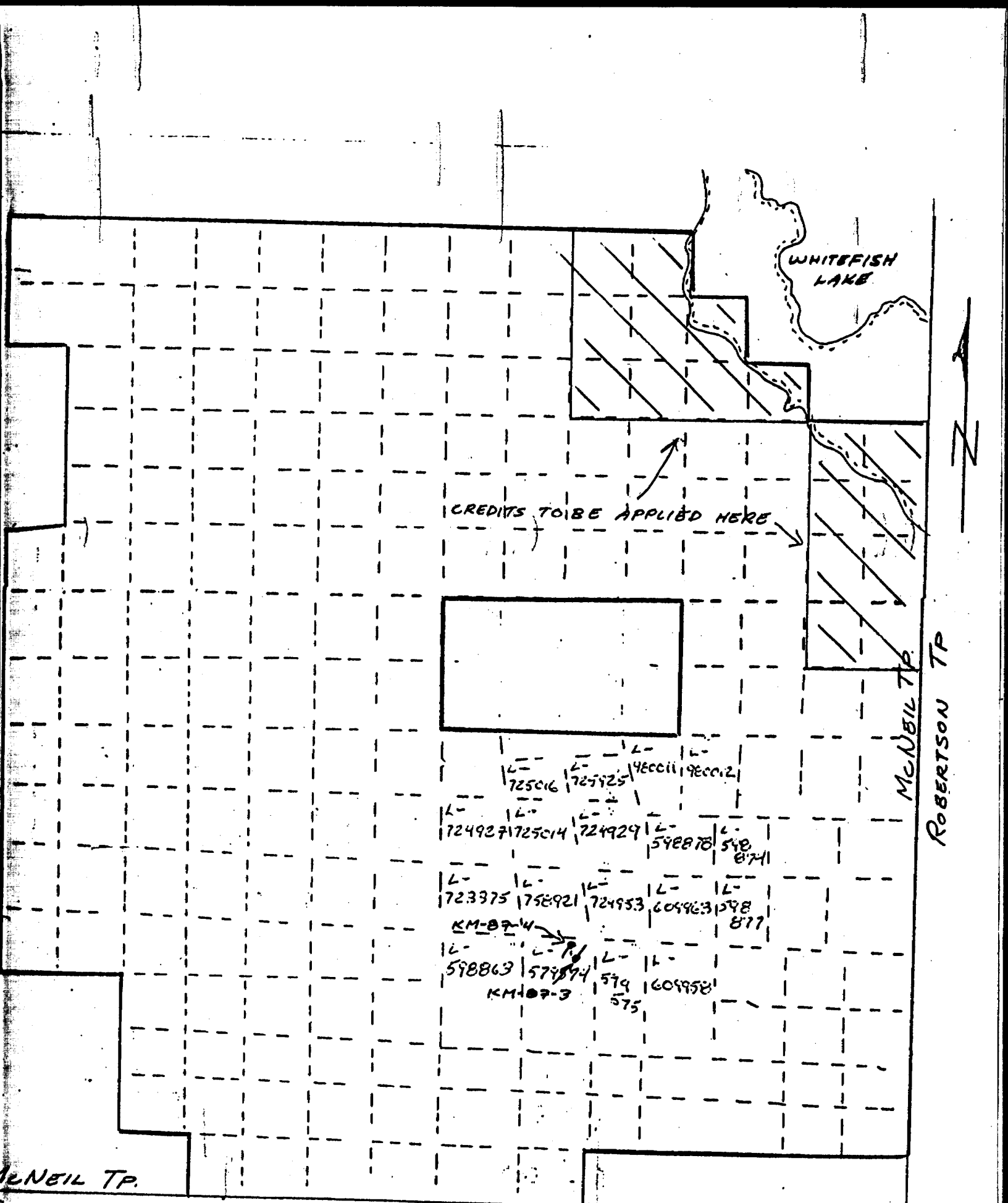
HOLE No. KM-87-4

LOCATION	DIP TEST		LEVEL	HORIZONTAL COMPONENT	DATE STARTED <u>OCT. 4/87</u>
AREA or TWP. <u>McNEIL TP</u>	FOOTAGE	ANGLE		VERTICAL COMPONENT	DATE FINISHED <u>OCT. 7/87</u>
		RECORDING	CORRECTED		
CLAIM NO. <u>L-579574</u>			ELEVATION	BEARING <u>210°</u>	LOGGED BY: <u>RJ. FRASER</u>
NTS <u>42-A-2</u>			LATITUDE <u>22+47 S</u>	LENGTH <u>502'</u>	PURPOSE
			DEPARTURE <u>11+02 E</u>	CORE LOCATION <u>KERR MINE VIRGINATOWN</u>	TOT. RECOVERY

DIAMOND DRILL HOLE LOCATION SKETCH



*RJ. Fraser*  
Oct. 31/87



CREDITS TO BE APPLIED HERE

WHITEFISH LAKE

McNEIL TP.  
ROBERTSON TP.

L- 725016 | L- 725125 | L- 920011 | L- 920012  
 L- 724927 | L- 725014 | L- 724929 | L- 542878 | L- 542879  
 L- 723375 | L- 752921 | L- 724953 | L- 609963 | L- 542877  
 KM-07-4  
 L- 598863 | L- 579574 | L- 579 | L- 609958  
 KM-07-3 | 575

McNEIL TP.  
RUGBY TP.

KERR ADDISON MINES LTD  
FOX LAKE PROJECT

1" = 1/2 MI.

# DIAMOND DRILL RECORD

LOGGED BY R.J. FRASER

KERR ADDISON MINES LTD.

PROPERTY MANVILLE CLAIMS - CHUTEAU OPTION - McNEIL TP. ONTARIO

D.D.H. No. KM-87-4 PAGE 1 OF 3

LATITUDE 22+47.5 BEARING OF HOLE 210° STARTED Oct. 4/87

CLAIM No. L-579574

DEPARTURE 11 TO 2 E DIP OF HOLE -45° COMPLETED Oct. 7/87



DIRECTION AND DISTANCE FROM

ELEVATION \_\_\_\_\_ DIP TESTS NONE DEPTH 502'

NE. CLAIM POST

DRILLED BY NEUMAR INDUSTRIES

NR DRILL CORE

FOOTAGE		DESCRIPTION	SAMPLE No.	FOOTAGE		SAMPLE LENGTH	ASSAY							
FROM	TO			FROM	TO									
		<u>BEDROCK SETUP</u>												
<u>0.0'</u>	<u>1082'</u>	<u>MAFIC VOLCANIC FLOWS:</u>												
		<u>DARK GREEN IN COLOUR, FINE TO MEDIUM GRAINED; FAIRLY MASSIVE WITH NO APPARENT FOLIATION.</u>												
		<u>- STRONG CHLORITIC ALTERATION.</u>												
		<u>LOCAL PATCHES OF STRONG MAGNETIC ATTRACTION PROBABLY DUE TO FINELY DISSEMINATED MAGNETITE IN THE GROUND MASS.</u>												
		<u>INTENSELY FRACTURED WITH NUMEROUS QUARTZ INFILLINGS.</u>												
		<u>TRACE PYRITE THROUGHOUT.</u>												
		<u>WITH DEPTH UNIT BECOMES LIGHTER IN COLOUR DUE TO WEAK SILICIFICATION.</u>												

SAMPLE SERIES  
3871 - 3878  
8 SAMPLES - 38.8'

*R.J. Fraser*  
October 31/87









*McNeil Insp.* Mining

Name and Postal Address of Recorded Holder  
**KERR ADDISON MINES LIMITED N 708 - 465 A-35072**  
**P.O. Box 91 COMMERCE COURT WEST TORONTO ONTARIO M5L 1C7**

Summary of Work Performance and Distribution of Credits

Total Work Days Cr. claimed	Mining Claim			Work Days Cr.	Mining Claim			Work Days Cr.	Mining Claim			Work Days Cr.
	Prefix	Number	Work Days Cr.		Prefix	Number	Work Days Cr.		Prefix	Number	Work Days Cr.	
<b>598</b>	L.	843269	60	L	857382	32						
for Performance of the following work. (Check one only) <input type="checkbox"/> Manual Work <input type="checkbox"/> Shaft Sinking Drifting or other Lateral Work. <input type="checkbox"/> Compressed Air, other Power driven or mechanical equip. <input type="checkbox"/> Power Stripping <input checked="" type="checkbox"/> Diamond or other Core drilling <input type="checkbox"/> Land Survey		843276	60		857383	32						
		843271	60		857384	32						
		843272	60		894542	32						
		857378	32		894543	32						
		859379	32		894544	32						
		857380	32		894545	38						
		857381	32									

All the work was performed on Mining Claim(s): **L- 598878**

Required Information eg: type of equipment, Names, Addresses, etc. (See Table Below)

**DRILLED BY: NEWMAC INDUSTRIES LTD.**  
**KAMLOOPS, BRITISH COLUMBIA**  
**EQUIPMENT: LONGYEAR 44 DRILL**  
**CORE SIZE: NQ WIRELINE 1 7/8"**  
**DDH KM-87-2 - 598'**  
**DATE: SEPT. 22 - SEPT. 26/87.**

**RECORDED**  
**NOV 20 1987**  
 Receipt # \_\_\_\_\_

ONTARIO GEOLOGICAL SURVEY  
 ASSESSMENT FILES  
 RESEARCH OFFICE  
 NOV 20 1987  
 RECEIVED 2:55 PM

Date of Report: **Nov. 20/87**  
 Recorded Holder or Agent (Signature): *R. Orase*

Certification Verifying Report of Work

I hereby certify that I have a personal and intimate knowledge of the facts set forth in the Report of Work annexed hereto, having performed the work or witnessed same during and/or after its completion and the annexed report is true.

Name and Postal Address of Person Certifying  
**ROBERT J. FRASER P.O. Box 438 MAPLE ONTARIO**  
**LOT 1E0**  
 Date Certified: **Nov. 20/87**  
 Certified by (Signature): *R. Orase*

Table of Information/Attachments Required by the Mining Recorder

Type of Work	Specific Information per type	Other information (Comen to 2 or more types)	Attachments
Manual Work	Nil	Names and addresses of men who performed manual work/operated equipment, together with dates and hours of employment.	Work Sketch: these are required to show the location and extent of work in relation to the nearest claim post.
Shaft Sinking, Drifting or other Lateral Work			
Compressed air, other power driven or mechanical equip.	Type of equipment	Names and addresses of owner or operator together with dates when drilling/stripping done.	Work Sketch (as above) in duplicate
Power Stripping	Type of equipment and amount expended. Note: Proof of actual cost must be submitted within 30 days of recording.		
Diamond or other core drilling	Signed core log showing; footage, diameter of core, number and angles of holes.	Nil	Nil
Land Survey	Name and address of Ontario land surveyer.		

4M

3M

2M

1M

4M

2M @ 40ch

2M

1M

ROBERTSON TWP. M.310

042624 042625 042626

McNeil  
M.300

Whitefish  
Lake

East  
Nighthawk  
Lake

Nighthawk  
River

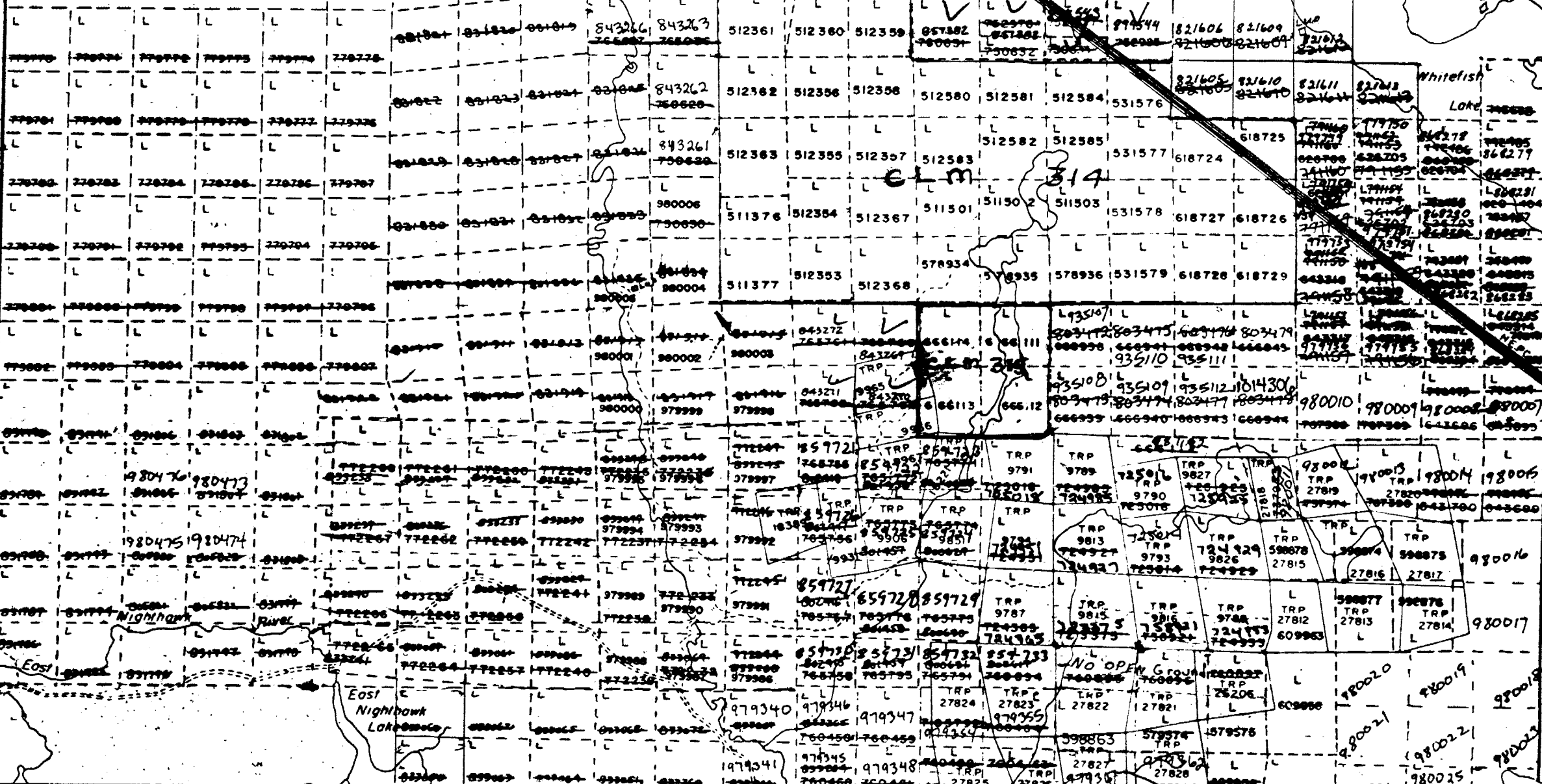
L.O. 415

HE

ELM

314

NO OPEN Ground



843265

843264

843263

843262

843261

843260

859721

859720

859719

859718

859717

859716

859715

859722

859721

859720

859719

859718

859717

859716

859723

859722

859721

859720

859719

859718

859717

859724

859723

859722

859721

859720

859719

859718

859725

859724

859723

859722

859721

859720

859719

859726

859725

859724

859723

859722

859721

859720

859727

859726

859725

859724

859723

859722

859721

859728

859727

859726

859725

859724

859723

859722

859729

859728

859727

859726

859725

859724

859723

859730

859729

859728

859727

859726

859725

859724

859731

859730

859729

859728

859727

859726

859725

859732

859731

859730

859729

859728

859727

859726

859733

859732

859731

859730

859729

859728

859727

859734

859733

859732

859731

859730

859729

859728



Ministry of Northern Development and Mines

Ontario

Assess. Lib. 466/87

Report of Work

Instructions - Supply required data on a separate form for each type of work to be recorded (see table below).  
- For Geo-technical work use form no. 1362 "Report of Work (Geological, Geophysical, Geochemical and Expenditures)".

McNeil Exp. Mining Act

Name and Postal Address of Recorded Holder: **KERR ADDISON MINES LIMITED. W 870.8-466**  
 Prospector's Licence No.: **A-35072**  
**P.O. Box 91 COMMERCE COURT WEST TORONTO ONTARIO M5L 1C7**

Summary of Work Performance and Distribution of Credits

Total Work Days Cr. claimed <b>1002 948</b>	Mining Claim			Mining Claim			Mining Claim		
	Prefix	Number	Work Days Cr.	Prefix	Number	Work Days Cr.	Prefix	Number	Work Days Cr.
for Performance of the following work. (Check one only) <input type="checkbox"/> Manual Work <input type="checkbox"/> Shaft Sinking Drifting or other Lateral Work. <input type="checkbox"/> Compressed Air, other Power driven or mechanical equip. <input type="checkbox"/> Power Stripping <input checked="" type="checkbox"/> Diamond or other Core drilling <input type="checkbox"/> Land Survey	L	821605	52	L	821613	52	L	868285	60
		821606	52		868278	60			
		821607	52		868279	60			
		821608	52		868280	60			
		821609	52		868281	60			
		821610	52		868282	60			
		821611	52		868283	60			
	821612	52		868284	60				

All the work was performed on Mining Claim(s): **L-579574**

Required Information eg: type of equipment, Names, Addresses, etc. (See Table Below)

**DRILLED BY: NEUMAC INDUSTRIES LTD.**  
**KAMLOOPS, BRITISH COLUMBIA**

**EQUIPEMENT: LONGYEAR 44 DRILL**

**CORE SIZE: NQ WIRELINE. 1 7/8"**

**DDH KM-87-3 - 500' SEPT. 29 - OCT. 2/87**

**DDH KM-87-4 - 502' OCT. 4 - OCT. 7/87.**

**OF THE 1002 DAYS CLAIMED WE ARE USING 948 DAYS LEAVING 54 DAYS OF DRILL CREDITS BANKED AGAINST CLAIM L-579574**

ON. GEOLOGICAL SURVEY  
 ASSESSMENT FILED  
 RECEIVED  
 DEC 2 1987  
 NOV 20 1987  
 7:55 PM

Date of Report: **Nov 20/87**  
 Recorded Holder or Agent (Signature): *[Signature]*

Certification Verifying Report of Work

I hereby certify that I have a personal and intimate knowledge of the facts set forth in the Report of Work annexed hereto, having performed the work or witnessed same during and/or after its completion and the annexed report is true.

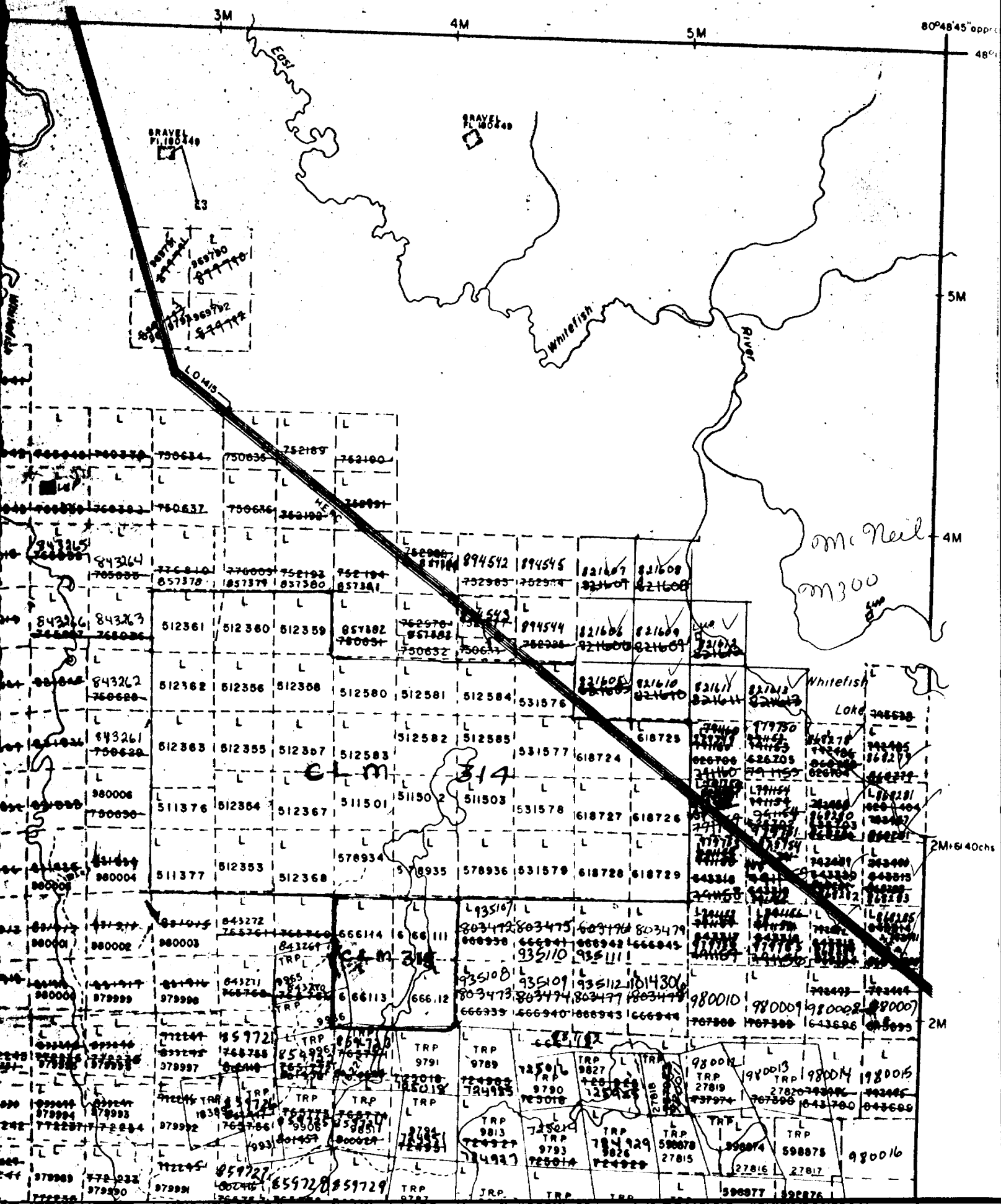
Name and Postal Address of Person Certifying: **ROBERT J. FRASER P.O. Box 438 MAPLE ONTARIO**  
**LOT 150**

Date Certified: **Nov 20/87**  
 Certified by (Signature): *[Signature]*

Table of Information/Attachments Required by the Mining Recorder

Type of Work	Specific information per type	Other information (Common to 2 or more types)	Attachments
Manual Work	Nil	Names and addresses of men who performed manual work/operated equipment, together with dates and hours of employment.	Work Sketch: these are required to show the location and extent of work in relation to the nearest claim post.
Shaft Sinking, Drifting or other Lateral Work			
Compressed air, other power driven or mechanical equip.	Type of equipment	Names and addresses of owner or operator together with dates when drilling/stripping done.	Work Sketch (as above) in duplicate
Power Stripping	Type of equipment and amount expended. Note: Proof of actual cost must be submitted within 30 days of recording.		
Diamond or other core drilling	Signed core log showing; footage, diameter of core, number and angles of holes.	Nil	Nil
Land Survey	Name and address of Ontario land surveyor.		

# FASKEN TWP. M.280



GRAVEL  
PL. 185149  
E3  
NORTH  
SOUTH  
899790  
877770  
899792  
877772

GRAVEL  
PL. 185149

McNeil  
m300  
L.P.

C.M.  
314

C.M.  
314

2M x 640chs

2M



Ministry of  
Natural  
Resources

Assess. Lib.  
Report  
of Work

# 467/87

McNeil Turp Mining Act

Instructions - Supply required data on a separate form for each type of work to be recorded (see table below).  
- For Geo-technical work use form no. 1362 "Report of Work (Geological, Geophysical, Geochemical and Expenditures)".

V 870A-267

Name and Postal Address of Recorded Holder: **KERR ADRIAN MINES LIMITED**  
 P.O. Box 91 COMMERCIAL COURT WEST TORONTO ONTARIO M5L 1C7

Prospector's Licence No.: **A-35072**

Summary of Work Performance and Distribution of Credits

Total Work Days Cr. claimed <b>500 481</b>	Mining Claim			Mining Claim			Mining Claim		
	Prefix	Number	Work Days Cr.	Prefix	Number	Work Days Cr.	Prefix	Number	Work Days Cr.
for Performance of the following work. (Check one only) <input type="checkbox"/> Manual Work <input type="checkbox"/> Shaft Sinking Drifting or other Lateral Work. <input type="checkbox"/> Compressed Air, other Power driven or mechanical equip. <input type="checkbox"/> Power Stripping <input checked="" type="checkbox"/> Diamond or other Core drilling <input type="checkbox"/> Land Survey	L	859721	37	L	859729	37			
		859722	37		859730	37			
		859723	37		859731	37			
		859724	37		859732	37			
		859725	37		859733	37			
		859726	37						
		859727	37						
	859728	37							

**RECEIVED**  
NOV 20 1987  
Receipt # \_\_\_\_\_

All the work was performed on Mining Claim(s): **L - 724929.**

Required Information eg: type of equipment, Names, Addresses, etc. (See Table Below)

DRILLED BY **NEUMAC INDUSTRIES LTD.**  
**KAMLOOPS, BRITISH COLUMBIA**

EQUIPMENT: **LONGYEAR 44 DRILL**

CORE SIZE: **NQ WIRELINE 1 7/8"**

DATES: **SEPT. 18 - SEPT. 21/87**

DDH: **KM-87-1 500'**

\* OF THE 500 DAYS CLAIMED WE ARE USING 481 DAYS LEAVING 19 DAYS CLAIM L-724929

ONTARIO GEOLOGICAL SURVEY  
ASSESSMENT FILES  
RESEARCH OFFICE  
DEC 22 1987

LARDER LAKE  
NOV 20 1987  
2:55 PM

Date of Report: **November 20/87**  
Recorded Holder or Agent (Signature): *[Signature]*

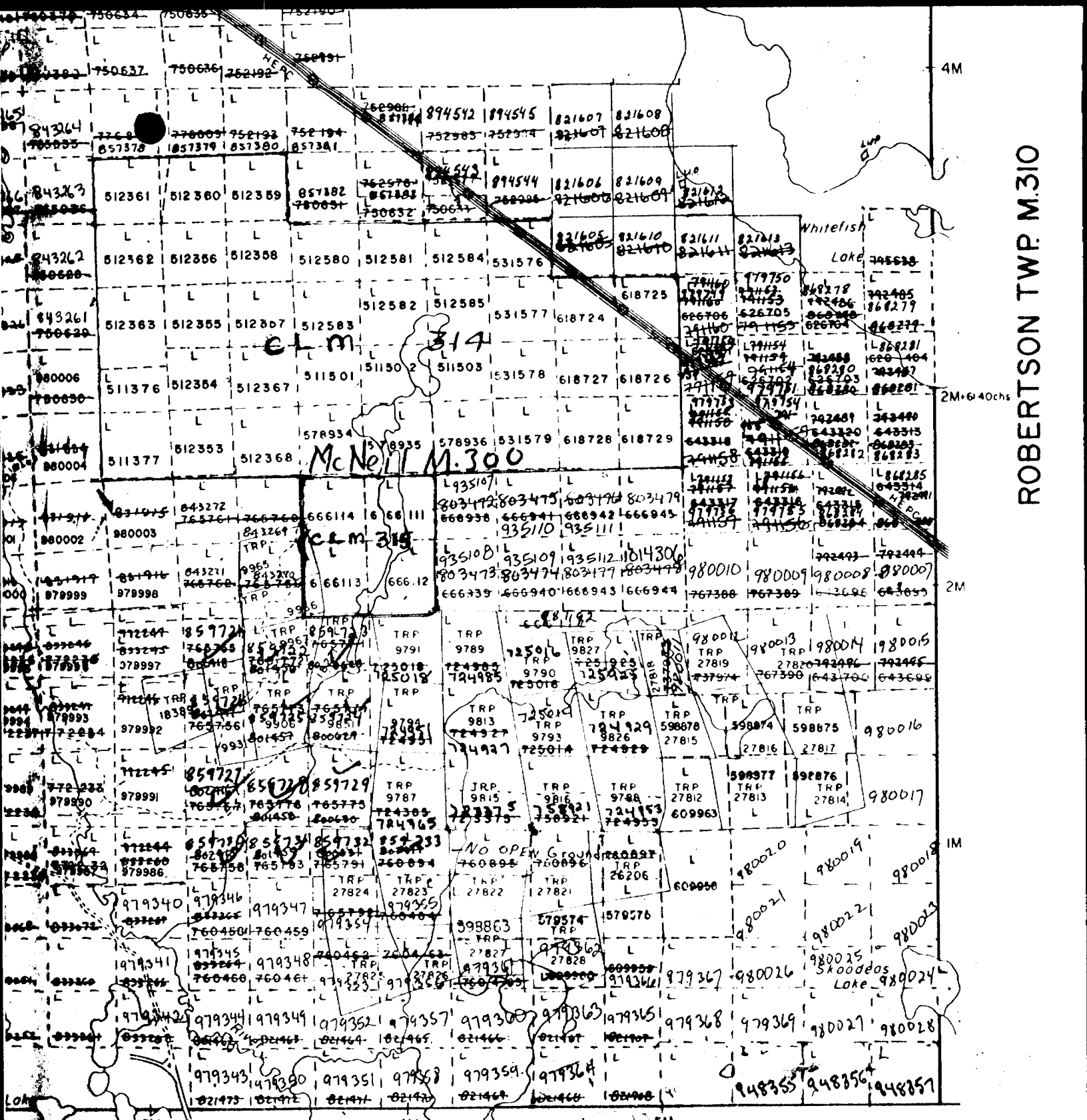
Certification Verifying Report of Work  
I hereby certify that I have a personal and intimate knowledge of the facts set forth in the Report of Work annexed hereto, having performed the work or witnessed same during and/or after its completion and the annexed report is true.

Name and Postal Address of Person Certifying: **ROBERT J. FRASER**  
**Box 438 MAPLE ONTARIO**  
**L0J 1Z0**

Date Certified: **November 20/87**  
 Certified by (Signature): *[Signature]*

Table of Information/Attachments Required by the Mining Recorder

Type of Work	Specific information per type	Other information (Common to 2 or more types)	Attachments
Manual Work	Nil	Names and addresses of men who performed manual work/operated equipment, together with dates and hours of employment.	Work Sketch: these are required to show the location and extent of work in relation to the nearest claim post.
Shaft Sinking, Drifting or other Lateral Work			
Compressed air, other power driven or mechanical equip.	Type of equipment	Names and addresses of owner or operator together with dates when drilling/stripping done.	Work Sketch (as above) in duplicate
Power Stripping	Type of equipment and amount expended. Note: Proof of actual cost must be submitted within 30 days of recording.		
Diamond or other core drilling	Signed core log showing; footage, diameter of core, number and angles of holes.	Nil	Nil
Land Survey	Name and address of Ontario land surveyor.		



ROBERTSON TWP. M.310

ARGYLE TWP. M.203

Rec'd May 7/84