



42A02NW0100 83.5493 CLEAVER

010

Table 1

CLEVO RESOURCES INC.
DIAMOND DRILL HOLE DATA

Hole Number	Latitude	Departure	Bearing (deg)	Dip (deg)	Length (feet)	Elevation
6436-88-1	0+17W	1+10S	020	-45	253.00	
6436-88-2	0+17W	1+10S	020	-65	410.00	
6436-88-3	0+67W	1+10S	020	-45	257.00	
6436-88-4	0+67W	1+10S	020	-65	407.00	
6436-88-5	0+33E	1+05S	020	-45	407.00	
5683-88-6	0+90W	0+30S	110	-45	147.00	
5683-88-7	0+90W	0+30S	110	-65	224.00	
				Total	2105.00	

**CLEYO RESOURCES INC.
ASSAY - VEIN CORRELATION**

Hole Number	Intersection (feet)		Length (feet)	Assay (Au)	Remarks
	From	To			
6436-88-1	37.90	39.80	2.80	217 ppb	
6436-88-2	25.20	26.50	1.30	0.035 oz	
	120.30	121.80	1.50	230 ppb	
	124.70	127.00	2.30	420 ppb	
6436-88-3	191.30	192.30	1.00	317 ppb	
6436-88-4	217.20	221.10	3.90	0.071 oz	
	221.10	224.10	3.00	245 ppb	
6436-88-5	173.90	174.90	1.00	108 ppb	
	377.60	378.60	1.00	284 ppb	
6436-88-6	42.10	43.60	1.50	139 ppb	
	127.40	130.20	2.80	0.031 oz.	
6436-88-7	29.10	31.10	2.00	0.033 oz.	
	31.10	32.60	1.50	0.081 oz.	
	97.70	98.70	1.00	0.073 oz.	

Table 3

06/21/88

**CLEYO RESOURCES INC.
LEASE-ASSESSMENT DATA
CLEAYER TWP. PROPERTY**

<u>Claim Number</u>	<u>Recording Date</u>	<u>Total Days Credits</u>	<u>Sixth Anniversary</u>	<u>Tenth Anniversary</u>
L. 724470	June 30, 1983	200	June 30, 1989	June 30, 1993
L. 724474	July 25, 1983	200	July 25, 1989	July 25, 1993
L. 749741	August 23, 1983	200	August 23, 1989	August 23, 1993
L. 749942	August 23, 1983	200	August 23, 1989	August 23, 1993
L. 749744	August 23, 1983	200	August 23, 1989	August 23, 1993
L. 749746	August 23, 1983	200	August 23, 1989	August 23, 1993
L. 750507	September 15, 1983	200	September 15, 1989	September 15, 1993
L. 750508	September 15, 1983	200	September 15, 1989	September 15, 1993
L. 916183	April 30, 1986	200	April 30, 1992	April 30, 1996
L. 916184	April 30, 1986	200	April 30, 1992	April 30, 1996
L. 916185	April 30, 1986	200	April 30, 1992	April 30, 1996
L. 916186	April 30, 1986	200	April 30, 1992	April 30, 1996

M/7

L07

L17

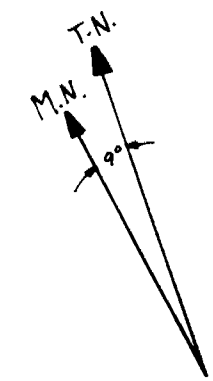
6436-00-3
6436-00-4

6436-00-2
6436-00-1

6436-00-6
6436-00-7

6436-00-5

Baseline



David R. Bell Geological Services Inc.

Cleyo Resources Inc

Diamond Drilling
Drill Hole Location Plan

Twp/Area Cleaver Twp		Province Ontario
Mining Division Larder Lake		Project 6436
References		N.T.S. 42 A/2
Drawn S.W.C.	Drafted S.W.C.	Checked S.W.C.
Scale 1"=40'	Date June 14, 1988	Sheet 6436-00-7-1

SW

NE

0+17W
1+10S

Baseline

-50'

-100'

-150'

-200'

-250'

1m f.g.

1m f.g.

1m v.f.g.

1m v.f.g.

1m aph.

gd

gd

1m v.f.g.

gd lb t.

lp

lp

cb fractures
py habo

lp

cb fractures
py-sericite habo
ch-ser-py-braccia
cb, brecciated

0.07/1.60
0.07/2.30
245/300

lp

lb t

lv

6436-08-3
E.M. 467.00 ft

6436-08-4
E.M. 467.00 ft

LEGEND

Basalt

- lm - massive flow
- lv - vesicular flow
- lp - pillowed flow
- lb - brecciated flow

- md - mafic dyke
- gd - granitic dyke

- t - top
- mc - missing core
- qtz - quartz
- cb - carbonate
- ser - sericite
- py - pyrite
- vn - vein
- bx - breccia

- 40/2.30 - assay in ppb/length in feet
- 100 ppb or more only
- 0.07/2.30 - assay in oz./length in feet

* see logs for all assay results

David R. Bell Geological Services Inc.

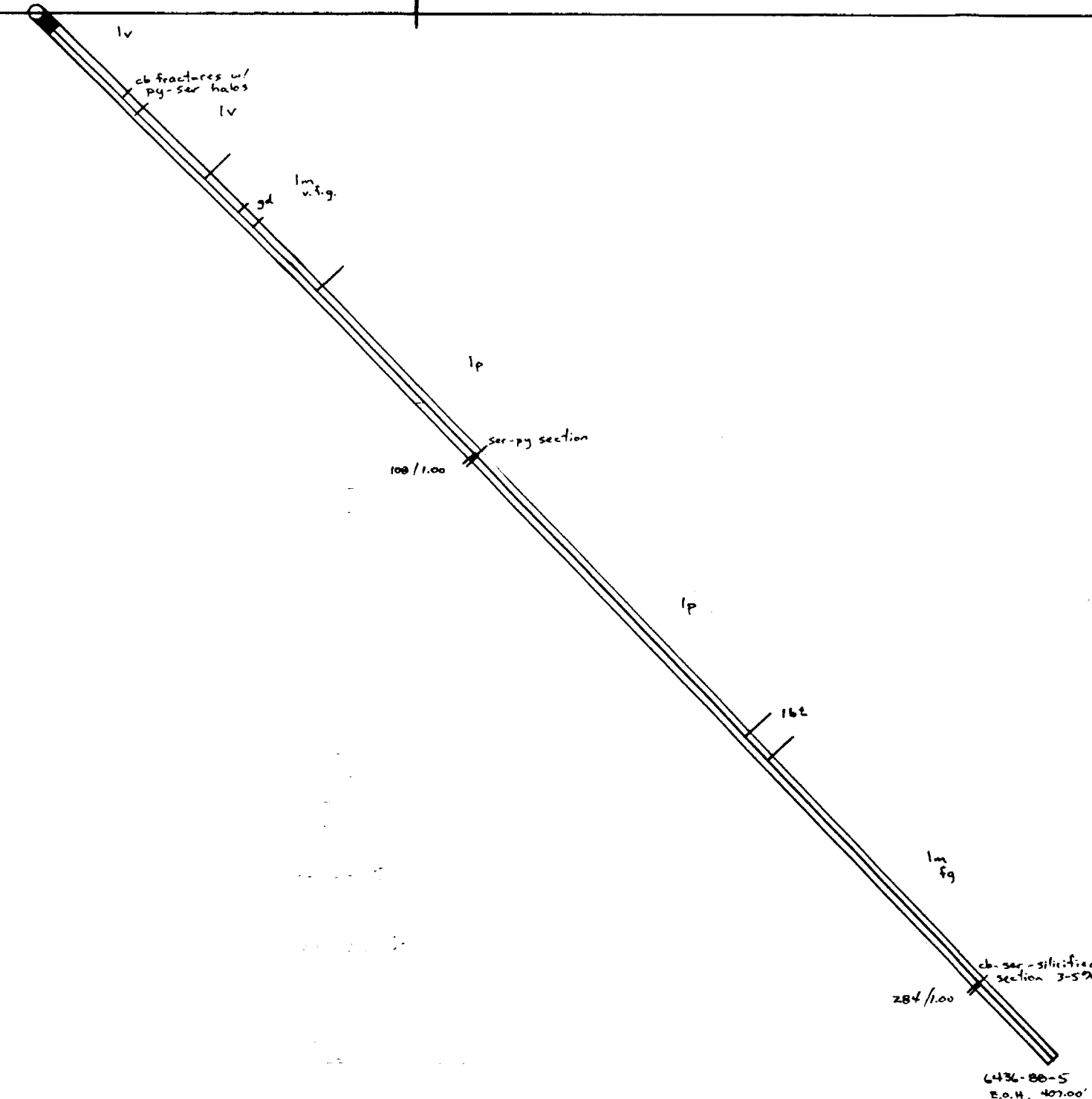
Cleyo Resources Inc.

Diamond Drilling
Holes 3 and 4
(looking WNW @ 290°)

Twp/Area Cleaver Twp	Province Ontario
Mining Division Larder Lake	Project 6436
References	N.T.S. 42 A 12
Drawn S.W.C.	Drafted S.W.C.
Scale 1" = 40'	Date June 14, 1988
	Checked S.W.C.
	Sheet 6436-08-7-3

SW 0153 E
1405 S Baseline NE

-50'
-100'
-150'
-200'
-250'



LEGEND

- Basalt
 lm - massive flow
 lv - vesicular flow
 lp - pillowed flow
 lb - brecciated flow
- md - mafic dyke
 gd - granitic dyke
- t - top
 mc - missing core
 qtz - quartz
 cb - carbonate
 ser - sericite
 py - pyrite
 vn - vein
 bx - breccia

420/2.30 - assay in ppb/length in feet
 - 100 ppb or more only

207/2.30 - assay in oz./length in feet

* see logs for all assay results

David R. Bell Geological Services Inc.

Clevo Resources Inc.

Diamond Drilling
 Hole 5
 (looking WNW @ 290°)

Twp/Area Cleaver Twp	Province Ontario
Mining Division Larder Lake	Project 6436
References	N.T.S. 42 A/2
Drawn S.W.C.	Drafted S.W.C.
Scale 1" = 40'	Date June 14, 1988
	Checked S.W.C.
	Sheet 6436-00-7-4

W-NW

E-SE

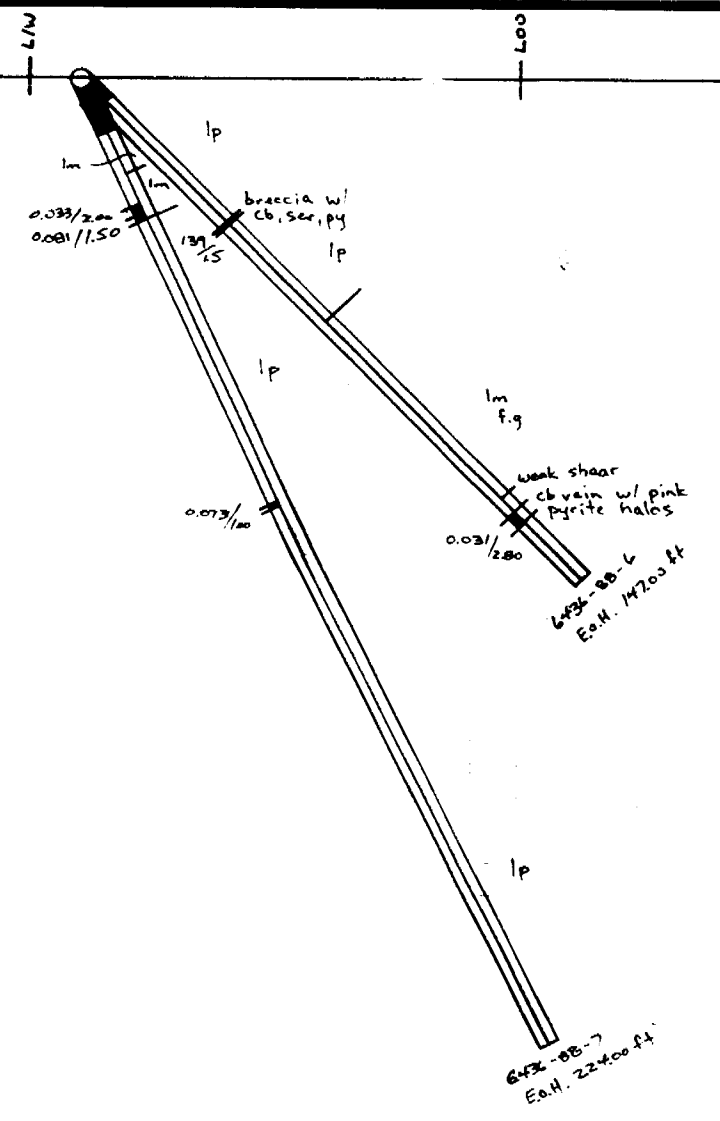
- 50'

- 100'

- 150'

- 200'

- 250'



LEGEND

Basalt
 lm - massive flow
 lv - vesicular flow
 lp - pillowed flow
 lb - brecciated flow

md - mafic dyke
 gd - granitic dyke

t - top
 mc - missing core
 qtz - quartz
 cb - carbonate
 ser - sericite
 py - pyrite
 vn - vein
 bx - breccia

120/2.70 - assay in ppb/length in feet
 - 100 ppb or more only
 0.071/2.30 - assay in oz./length in feet

* see logs for all assay results

David R. Bell Geological Services Inc.

Cleyo Resources Inc.

Diamond Drilling
Holes 6 and 7

(looking ENE @ 020°)

Twp/Area Cleaver Twp	Province Ontario
Mining Division Larder Lake	Project 6936
References	N.T.S. 42A/2
Drawn S.W.C.	Drafted S.W.C.
Scale 1" = 400'	Date June 14/88
	Checked S.W.C.
	Sheet 6432-88-7-5



**MIN
• EN
LABORATORIES LTD.**

SPECIALISTS IN MINERAL ENVIRONMENTS
CHEMISTS • ASSAYERS • ANALYSTS • GEOCHEMISTS

VANCOUVER OFFICE:
705 WEST 15TH STREET
NORTH VANCOUVER, B.C. CANADA V7M 1T2
TELEPHONE (604) 980-5614 OR (604) 988-4524
TELEX: VIA U.S.A. 7801067 • FAX (604) 980-9621

TIMMINS OFFICE:
33 EAST IROQUOIS ROAD
P.O. BOX 887
TIMMINS, ONTARIO CANADA P4N 7G7
TELEPHONE: (705) 264-9986

Certificate of GEOCHEM

Company: D. R. BELL GEOLOGICAL SERVICES
Project: 6436
Attention: D. R. BELL

File: 82-849/P1
Date: JUNE 12/88
Type: ROCK GEOCHEM

We hereby certify the following results for samples submitted.

Sample Number	AU-FIRE PPB
------------------	----------------

0060	12
0061	30
0062	24
0063	12
0064	9

0065	9
0066	6
0067	22
0068	14
0069	13

0070	23
0071	18
0072	11
0073	217
0074	44

0075	6
0076	13
0077	5
0078	4
0079	3

0080	3
0081	1
0082	15
0083	3
0084	5

0085	11
0086	12
0087	74
0088	13
0089	23

Certified by _____

MIN-EN LABORATORIES LTD.



**MIN
• EN
LABORATORIES LTD.**

SPECIALISTS IN MINERAL ENVIRONMENTS
CHEMISTS • ASSAYERS • ANALYSTS • GEOCHEMISTS

VANCOUVER OFFICE:
705 WEST 15TH STREET
NORTH VANCOUVER, B.C. CANADA V7M 1T2
TELEPHONE (604) 980-5814 OR (604) 988-4524
TELEX: VIA U.S.A. 7601067 • FAX (604) 980-9621

TIMMINS OFFICE:
33 EAST IROQUOIS ROAD
P.O. BOX 867
TIMMINS, ONTARIO CANADA P4N 7G7
TELEPHONE: (705) 264-9996

Certificate of GEOCHEM

Company: D.R. BELL GEOLOGICAL SERVICES
Project: 6436
Attention: D.R. BELL

File: B2-852/P1
Date: JUNE 10/88
Type: ROCK GEOCHEM

We hereby certify the following results for samples submitted.

Sample Number	AU-FIRE PPB
0104	8
0105	3
0106	1
0107	8
0108	1160

0109	15
0110	21
0111	3
0112	6
0113	11

0114	4
0115	5
0116	3
0117	5
0118	2

0119	3
0120	2
0121	4
0122	3
0123	3

0124	5
0125	7
0126	230
0127	28
0128	420

0129	3

Certified by _____

MIN-EN LABORATORIES LTD.



**MIN
• EN
LABORATORIES LTD.**

SPECIALISTS IN MINERAL ENVIRONMENTS
CHEMISTS • ASSAYERS • ANALYSTS • GEOCHEMISTS

VANCOUVER OFFICE:
705 WEST 15TH STREET
NORTH VANCOUVER, B.C. CANADA V7M 1T2
TELEPHONE (604) 980-5814 OR (604) 988-4524
TELEX: VIA U.S.A. 7601067 • FAX (604) 980-9621

TIMMINS OFFICE:
33 EAST IROQUOIS ROAD
P.O. BOX 867
TIMMINS, ONTARIO CANADA P4N 7G7
TELEPHONE: (705) 264-9996

Certificate of ASSAY

Company: D.R. BELL GEOLOGICAL SERVICES
Project: 6436
Attention: D.R. BELL

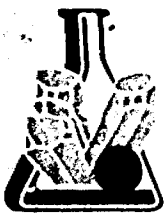
File: 82-852/P1
Date: JUNE 10/88
Type: ROCK ASSAY

We hereby certify the following results for samples submitted.

Sample Number	AU G/TONNE	AU OZ/TON
0108	1.20	0.035

Certified by _____

MIN-EN LABORATORIES LTD.



**MIN
• EN
LABORATORIES LTD.**

SPECIALISTS IN MINERAL ENVIRONMENTS
CHEMISTS • ASSAYERS • ANALYSTS • GEOCHEMISTS

VANCOUVER OFFICE:
705 WEST 15TH STREET
NORTH VANCOUVER, B.C. CANADA V7M 1T2
TELEPHONE (604) 980-5814 OR (604) 988-4524
TELEX: VIA U.S.A. 7601067 • FAX (604) 980-9621

TIMMINS OFFICE:
33 EAST IROQUOIS ROAD
P.O. BOX 867
TIMMINS, ONTARIO CANADA P4N 7G7
TELEPHONE: (705) 264-9996

Certificate of GEOCHEM

Company: D.R. BELL GEOLOGICAL SERVICES
Project: 6436
Attention: D.R. BELL

File: 82-861/P1
Date: JUNE 12/88
Type: ROCK GEOCHEM

We hereby certify the following results for samples submitted.

Sample Number	ALI-FIRE PPB
---------------	-----------------

0130	7
0131	1
0132	2
0133	1
0134	6

0135	5
0136	9
0137	2
0138	4
0139	1

0140	10
0141	3
0142	12
0143	2
0144	15

0145	1
0146	3
0147	2
0148	1
0149	1

0150	11
0151	32
0152	9
0153	10
0154	317

0155	18
0156	17
0157	20
0158	2
0159	5

Certified by _____

MIN-EN LABORATORIES LTD.



**MIN
• EN
LABORATORIES LTD.**

SPECIALISTS IN MINERAL ENVIRONMENTS
CHEMISTS • ASSAYERS • ANALYSTS • GEOCHEMISTS

VANCOUVER OFFICE:
705 WEST 15TH STREET
NORTH VANCOUVER, B.C. CANADA V7M 1T2
TELEPHONE (604) 980-5814 OR (604) 988-4524
TELEX: VIA U.S.A. 7601067 • FAX (604) 980-9621

TIMMINS OFFICE:
33 EAST IROQUOIS ROAD
P.O. BOX 867
TIMMINS, ONTARIO CANADA P4N 7G7
TELEPHONE: (705) 264-9996

Certificate of Geochem

Company: D.R. BELL GEOLOGICAL SERVICES
Project: 6436
Attention: D.R. BELL

File: 82-861/P2
Date: JUNE 12/88
Type: ROCK GEOCHEM

We hereby certify the following results for samples submitted.

Sample Number	AU-FIRE PPB
0160	9
0161	42
0162	96

Certified by _____

MIN-EN LABORATORIES LTD.



**MIN
• EN
LABORATORIES LTD.**

SPECIALISTS IN MINERAL ENVIRONMENTS
CHEMISTS • ASSAYERS • ANALYSTS • GEOCHEMISTS

VANCOUVER OFFICE:
705 WEST 15TH STREET
NORTH VANCOUVER, B.C. CANADA V7M 1T2
TELEPHONE (604) 980-5814 OR (604) 988-4524
TELEX: VIA U.S.A. 7601067 • FAX (604) 980-9621

TIMMINS OFFICE:
33 EAST IROQUOIS ROAD
P.O. BOX 867
TIMMINS, ONTARIO CANADA P4N 7G7
TELEPHONE: (705) 264-9996

Certificate of ASSAY

Company: D.R. BELL GEOLOGICAL SERVICES
Project: 6436
Attention: S. CONQUER

File: 82-871/P1
Date: JUNE 12/88
Type: ROCK ASSAY

We hereby certify the following results for samples submitted.

Sample Number	AU G/TONNE	AU OZ/TON
0175	2.43	0.071
0176	2.42	0.071

Certified by _____

MIN-EN LABORATORIES LTD.



**MIN
• EN
LABORATORIES LTD.**

SPECIALISTS IN MINERAL ENVIRONMENTS
CHEMISTS • ASSAYERS • ANALYSTS • GEOCHEMISTS

VANCOUVER OFFICE:
705 WEST 15TH STREET
NORTH VANCOUVER, B.C. CANADA V7M 1T2
TELEPHONE (604) 980-5814 OR (604) 988-4524
TELEX: VIA U.S.A. 7601067 • FAX (604) 980-9621

TIMMINS OFFICE:
33 EAST IROQUOIS ROAD
P.O. BOX 867
TIMMINS, ONTARIO CANADA P4N 7G7
TELEPHONE: (705) 264-9996

Certificate of GEOCHEM

Company: D.R. BELL GEOLOGICAL SERVICES
Project: 6436
Attention: S. CONQUER

File: 82-871/P1
Date: JUNE 12/88
Type: ROCK GEOCHEM

We hereby certify the following results for samples submitted.

Sample Number	ALI-FIRE PPB
------------------	-----------------

0163	1
0164	8
0165	4
0166	3
0167	1

0168	6
0169	4
0170	21
0171	9
0172	7

0173	10
0174	13
0175	2250
0176	2010
0177	245

0178	1
0179	2
0180	1
0181	7
0182	60

0183	3
0184	1
0185	4
0186	11
0187	2

0188	8
0189	2
0190	1
0191	73
0192	26

Certified by _____

MIN-EN LABORATORIES LTD.



**MIN
• EN
LABORATORIES LTD.**

SPECIALISTS IN MINERAL ENVIRONMENTS
CHEMISTS • ASSAYERS • ANALYSTS • GEOCHEMISTS

VANCOUVER OFFICE:
705 WEST 15TH STREET
NORTH VANCOUVER, B.C. CANADA V7M 1T2
TELEPHONE (604) 980-5814 OR (604) 988-4524
TELEX: VIA U.S.A. 7601067 • FAX (604) 980-9621

TIMMINS OFFICE:
33 EAST IROQUOIS ROAD
P.O. BOX 867
TIMMINS, ONTARIO CANADA P4N 7G7
TELEPHONE: (705) 264-9996

Certificate of GEOCHEM

Company: D.R. BELL GEOLOGICAL
Project: 6436
Attention: S. CONQUER

File: B2-B77/P1
Date: JUNE 15/88
Type: ROCK GEOCHEM

We hereby certify the following results for samples submitted.

Sample Number	AU-FIRE PPB
0203	3
0204	1
0205	2
0206	1
0207	1

0208	284
0209	3
0210	3
0211	139
0212	22

0213	37
0214	63
0215	4
0216	5
0217	6

0218	2
0219	17
0220	4
0221	3
0222	20

0223	980
0224	21
0225	29
0226	23
0227	11

0228	20
0229	900
0230	2600
0231	3
0232	2

Certified by _____

MIN-EN LABORATORIES LTD.



**MIN
• EN
LABORATORIES LTD.**

SPECIALISTS IN MINERAL ENVIRONMENTS
CHEMISTS • ASSAYERS • ANALYSTS • GEOCHEMISTS

VANCOUVER OFFICE:
705 WEST 15TH STREET
NORTH VANCOUVER, B.C. CANADA V7M 1T2
TELEPHONE (604) 980-5814 OR (604) 988-4524
TELEX: VIA U.S.A. 7601067 • FAX (604) 980-9621

TIMMINS OFFICE:
33 EAST IROQUOIS ROAD
P.O. BOX 867
TIMMINS, ONTARIO CANADA P4N 7G7
TELEPHONE: (705) 264-9996

Certificate of Geochem

Company: D. R. BELL GEOLOGICAL
Project: 6436
Attention: S. CONQUER

File: 82-877/P2
Date: JUNE 15/88
Type: ROCK GEOCHEM

We hereby certify the following results for samples submitted.

Sample Number	AU-FIRE PPB
0233	2150
0234	17
0235	18
0236	16
0237	24

Certified by _____

[Handwritten Signature]
MIN-EN LABORATORIES LTD.



**MIN
• EN
LABORATORIES LTD.**

SPECIALISTS IN MINERAL ENVIRONMENTS
CHEMISTS • ASSAYERS • ANALYSTS • GEOCHEMISTS

VANCOUVER OFFICE:
705 WEST 15TH STREET
NORTH VANCOUVER, B.C. CANADA V7M 1T2
TELEPHONE (604) 980-5814 OR (604) 988-4524
TELEX: VIA U.S.A. 7601067 • FAX (604) 980-9621

TIMMINS OFFICE:
33 EAST IROQUOIS ROAD
P.O. BOX 867
TIMMINS, ONTARIO CANADA P4N 7G7
TELEPHONE: (705) 264-9996

Certificate of ASSAY

Company: D.R. BELL GEOLOGICAL
Project: 6436
Attention: S. CONQUER

File: 82-877/P1
Date: JUNE 15/88
Type: ROCK ASSAY

We hereby certify the following results for samples submitted.

Sample Number	AU G/TONNE	AU OZ/TON
0223	1.05	0.031
0229	1.13	0.033
0230	2.78	0.081
0233	2.50	0.073

Certified by *[Signature]*

MIN-EN LABORATORIES LTD.

David R. Bell Geological Services Inc.

DIAMOND DRILL HOLE RECORD

Project 6436 - Cleaver Twp.

Company Cleyo Resources Inc.

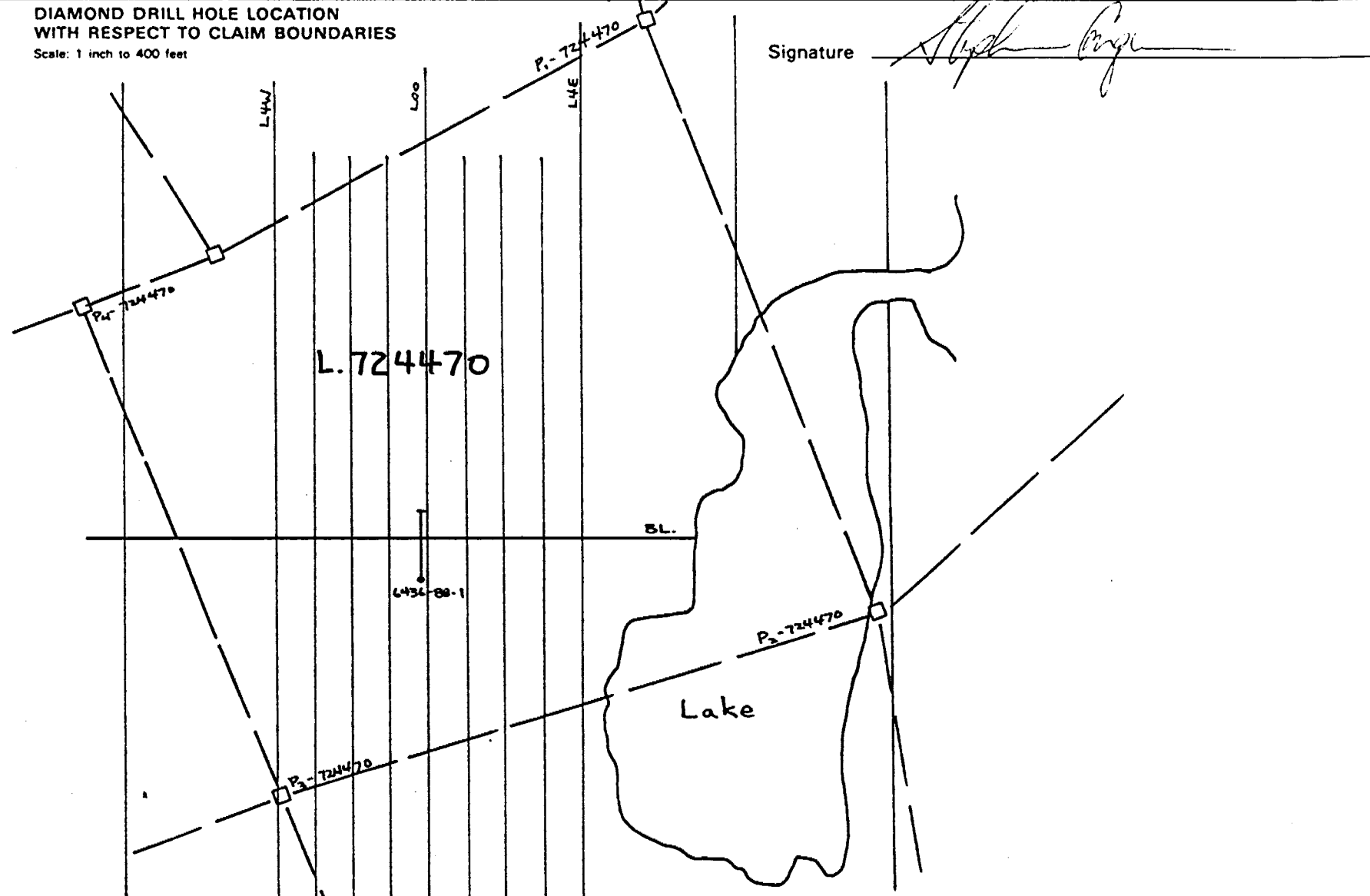
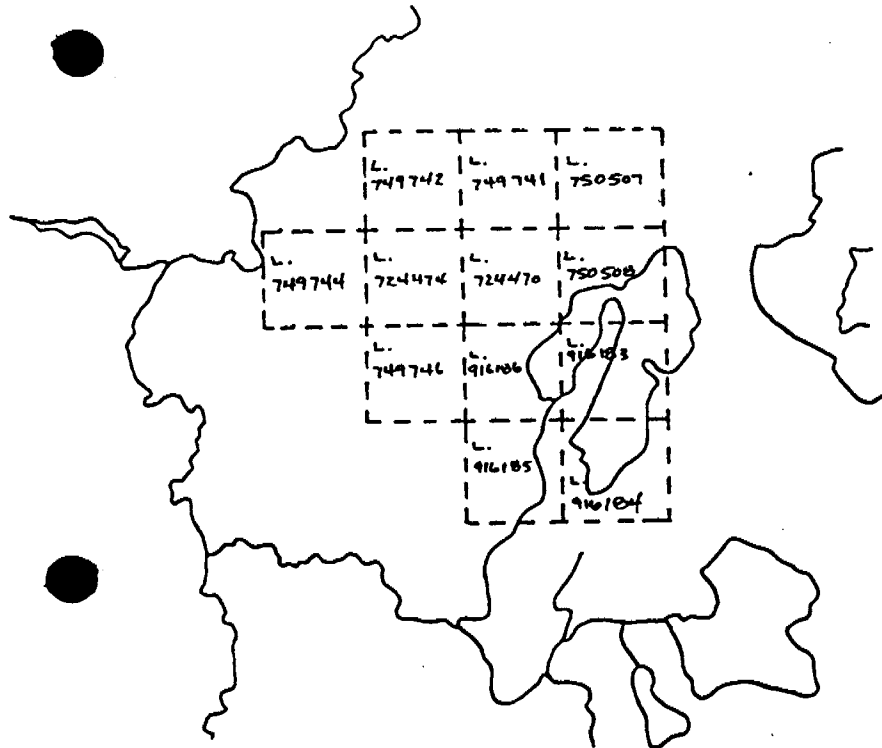
Hole No. 6436 - 88 - 1

LOCATION	DIP TEST		LEVEL	HORIZONTAL COMPONENT	DATE
AREA of TWP. Cleaver Twp.	FOOTAGE	ANGLE		Surface	178.00
		RECORDING	CORRECTED	BQ core 1-7/16 inch	178.00
CLAIM NO L. 724470	0.00				DATE STARTED May 6, 1988
	125.00				DATE FINISHED
NTS 42 A/ 2 UTM	250.00				LOGGED BY S. Conquer
					PURPOSE to test known gold hearing zone
			ELEVATION	BEARING 020	TOT. RECOVERY 99.9%
			LATITUDE 0+17W	LENGTH 253.00	
			DEPARTURE 1+10S	CORE LOCATION Cleyo Resources, Timmins	

DIAMOND DRILL HOLE LOCATION SKETCHES
CLAIM MAP Scale: 1 inch to 1/2 mile

DIAMOND DRILL HOLE LOCATION
WITH RESPECT TO CLAIM BOUNDARIES
Scale: 1 inch to 400 feet

Signature *Stephen Conquer*



David R. Bell Geological Services Inc.

DIAMOND DRILL HOLE RECORD

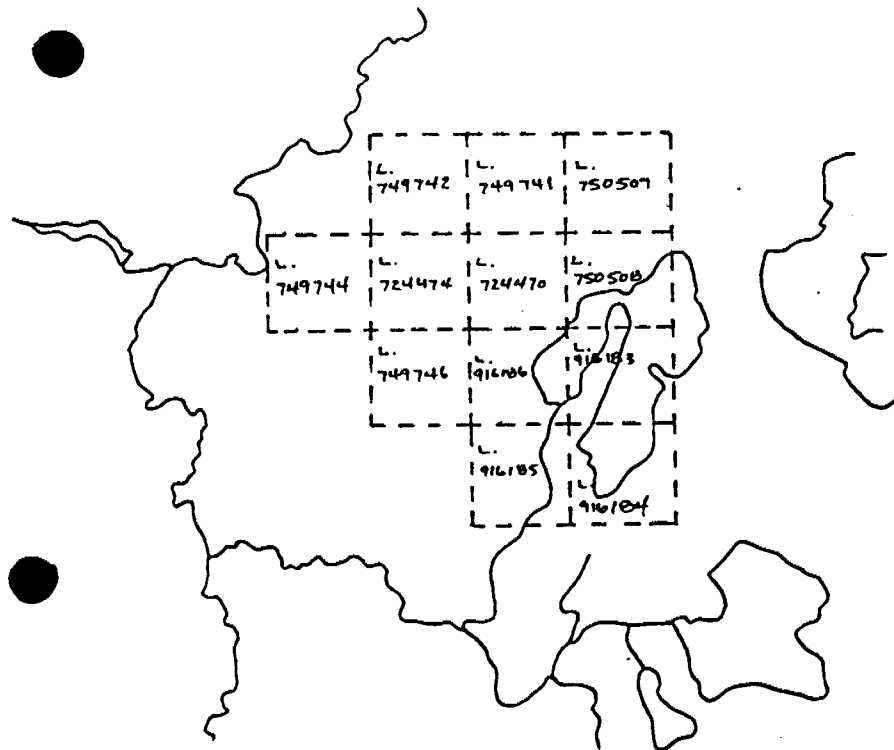
Project 6436 - Cleaver Twp.

Company Cleyo Resources Inc.

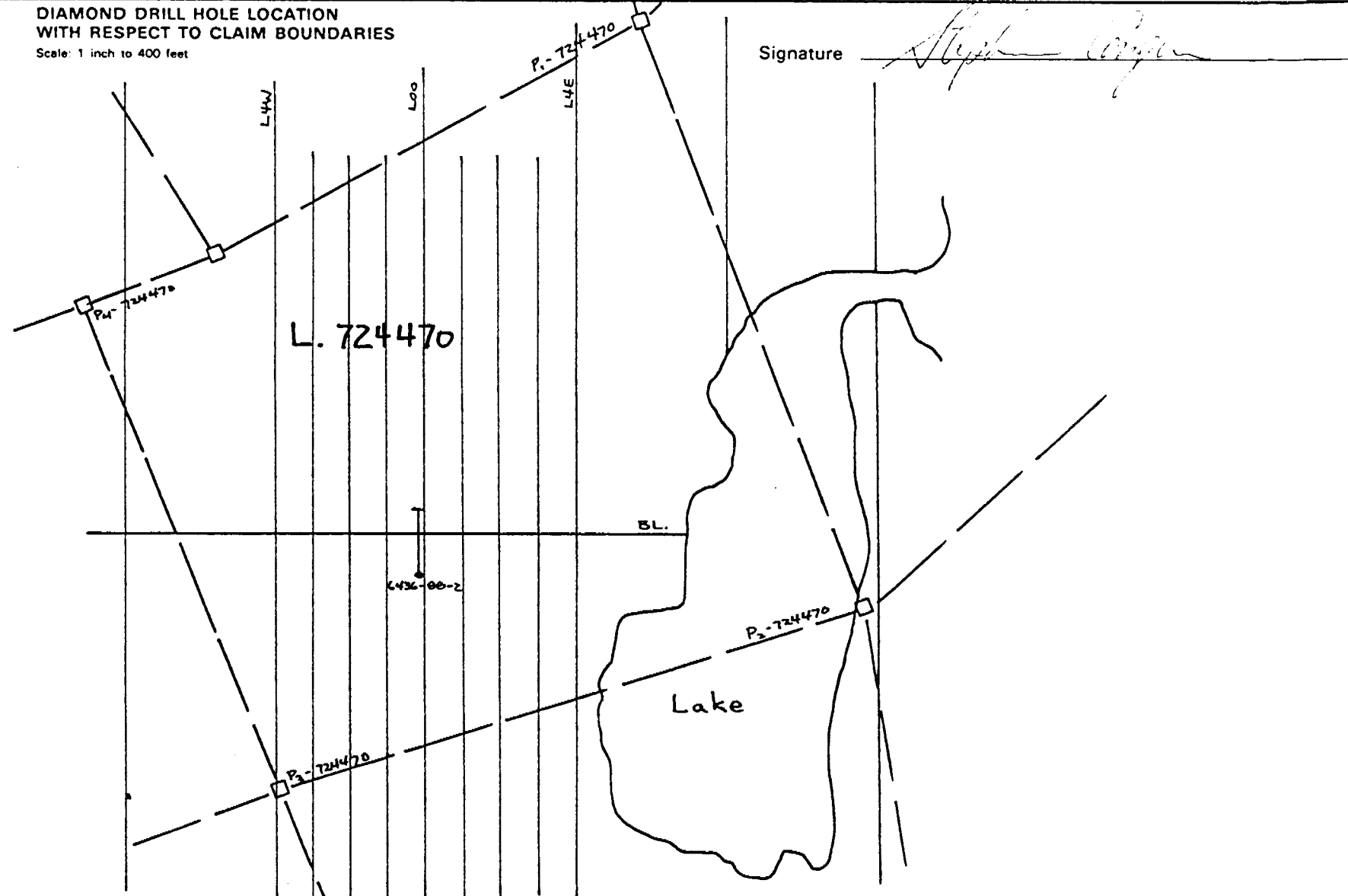
Hole No. 6436 - 88 - 2

LOCATION	DIP TEST		LEVEL Surface	HORIZONTAL COMPONENT 184.00	DATE STARTED
	FOOTAGE	ANGLE			
AREA or TWP Cleaver Twp.	0.00	RECORDING	BQ core - 1-7/16 inch	VERTICAL COMPONENT 366.00	DATE FINISHED
		CORRECTED			
CLAIM NO. L. 724470	200.00		ELEVATION	BEARING 020°	LOGGED BY S. Conquer
	410.00		LATITUDE 0+17W	LENGTH 410.00	PURPOSE to test known gold bearing zone
NTS 42 A/ 2 UTM			DEPARTURE 1+10S	CORE LOCATION Cleyo Resources, Timmins	TOT. RECOVERY 99.9%

DIAMOND DRILL HOLE LOCATION SKETCHES
CLAIM MAP Scale: 1 inch to 1/2 mile



DIAMOND DRILL HOLE LOCATION
WITH RESPECT TO CLAIM BOUNDARIES
Scale: 1 inch to 400 feet



Signature *Steph Conquer*

David R. Bell Geological Services Inc.

DIAMOND DRILL HOLE RECORD

Project 6436 - Cleaver Twp.

Company Cleyo Resources Inc.

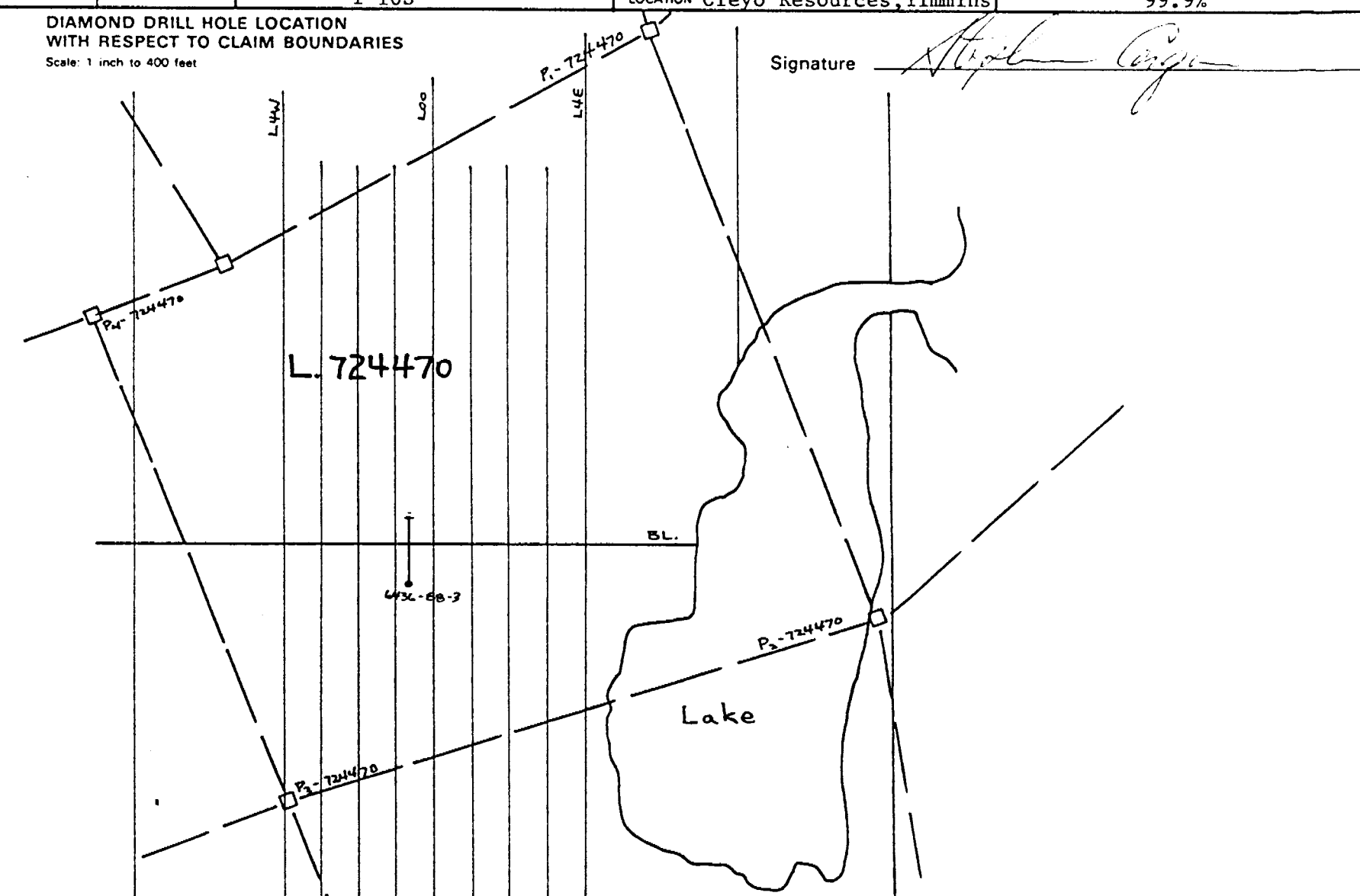
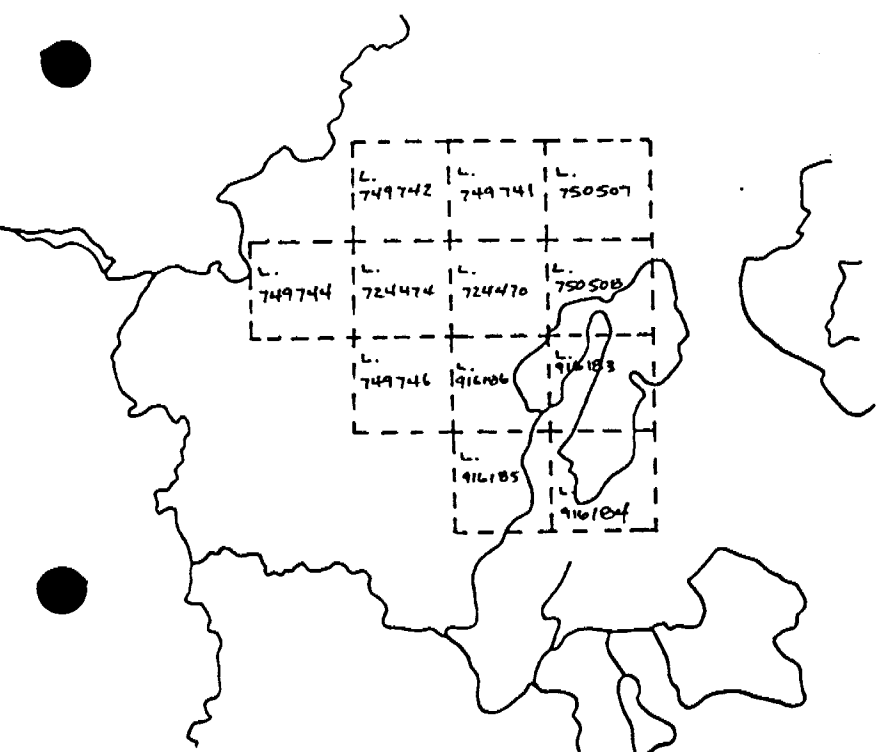
Hole No. 6436 - 88 - 3

LOCATION	DIP TEST		LEVEL	HORIZONTAL COMPONENT	DATE STARTED
AREA or TWP. <u>Cleaver Twp.</u>	FOOTAGE	ANGLE		<u>179.00</u>	
		RECORDING	CORRECTED		DATE FINISHED
CLAIM NO <u>L. 724470</u>	<u>0.00</u>		<u>-45°</u>	<u>179.00</u>	
	<u>125.00</u>		<u>-45°</u>		LOGGED BY <u>S. Conquer</u>
	<u>247.00</u>		<u>-45°</u>		PURPOSE <u>to test known gold bearing zone</u>
NTS <u>42 A/2</u> UTM					TOT. RECOVERY <u>99.9%</u>
			ELEVATION <u>BQ core 1-7/16 inch</u>	BEARING <u>020°</u>	
			LATITUDE <u>0+67W</u>	LENGTH <u>257.00</u>	
			DEPARTURE <u>1+10S</u>	CORE LOCATION <u>Cleyo Resources, Timmins</u>	

DIAMOND DRILL HOLE LOCATION SKETCHES
CLAIM MAP Scale: 1 inch to 1/2 mile

DIAMOND DRILL HOLE LOCATION WITH RESPECT TO CLAIM BOUNDARIES
Scale: 1 inch to 400 feet

Signature *S. Conquer*



David R. Bell Geological Services Inc.

DIAMOND DRILL HOLE LOG

PROJECT 6436- Cleaver Twp.

Company Cleyo Resources Inc.

HOLE No. 6436-88-3 Page 1 of 2

FOOTAGE		ROCK TYPE AND DESCRIPTION (alteration, structure, mineralization)	CORE ANGLES TO AXIS	% SULPHIDES	SAMPLE				ANALYTICAL RESULTS							
FROM ft	TO ft				NUMBER 6436	FROM ft	TO ft	LENGTH	AU ppb	AU oz/t						
0.00	7.00	Overburden - casing left in ground														
7.00	257.00	Basalt - aphanitic to m.g., dark green to green, strongly magnetic - massive, flow top breccia, pillowed - vesicles, variolites, hyaloclastite found on pillowed section - cb filled fractures w/ py-sericite halos 7.00-51.90: f-m.g. massive flow, epidote in fractures strongly magnetic 51.90-65.00: f-v.f.g massive flow, epidote locally, magnetic 65.00-82.00: flow top 65.00-67.00: flow breccia 67.00-71.20: variolitic, vesicular massive 68.70-70.70: "granitic" section, pk (hematite or potassium) altered section or included black 2-3% fg cubic py, cb'd 74.90-77.00: section w/2-3% f-m.g. diss py cubes 82.00-257.00: pillowed flows, gn to dk green, magnetic vesicular, variolitic, hyaloclastite 190.30-197.50: section w/ cb filled fractures w/ py halos as holes-88-1,-88-2 190.50, 191.80, 192.00, 193.40, 196.00, 197.3														
					-0146	65.00	67.00	2.00	3							
					-0147	67.00	68.70	1.70	2							
					-0148	68.70	70.70	2.00	1							
					-0149	70.70	74.90	4.20	1							
					-0150	74.90	77.00	2.10	11							
					-0151	77.00	80.40	3.40	32							
					-0152	188.20	190.30	2.10	9							
					-0153	190.30	191.30	1.00	10							
					-0154	191.30	192.30	1.00	17							
					-0155	192.30	195.80	3.50	18							

David R. Bell Geological Services Inc.

DIAMOND DRILL HOLE RECORD

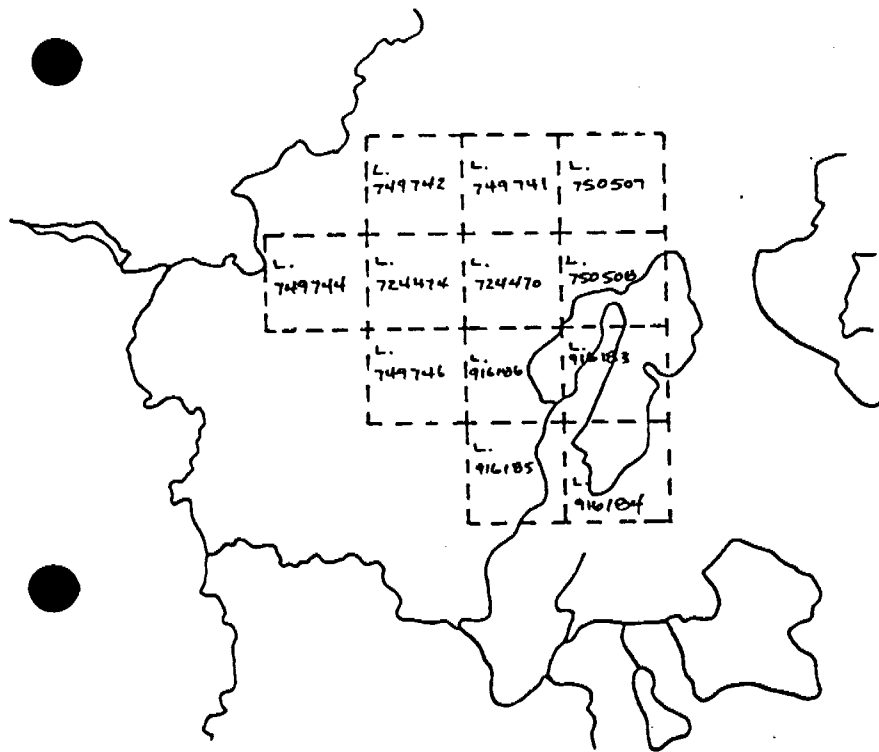
Project 6436 - Cleaver Twp.

Company Cleyo Resources Inc.

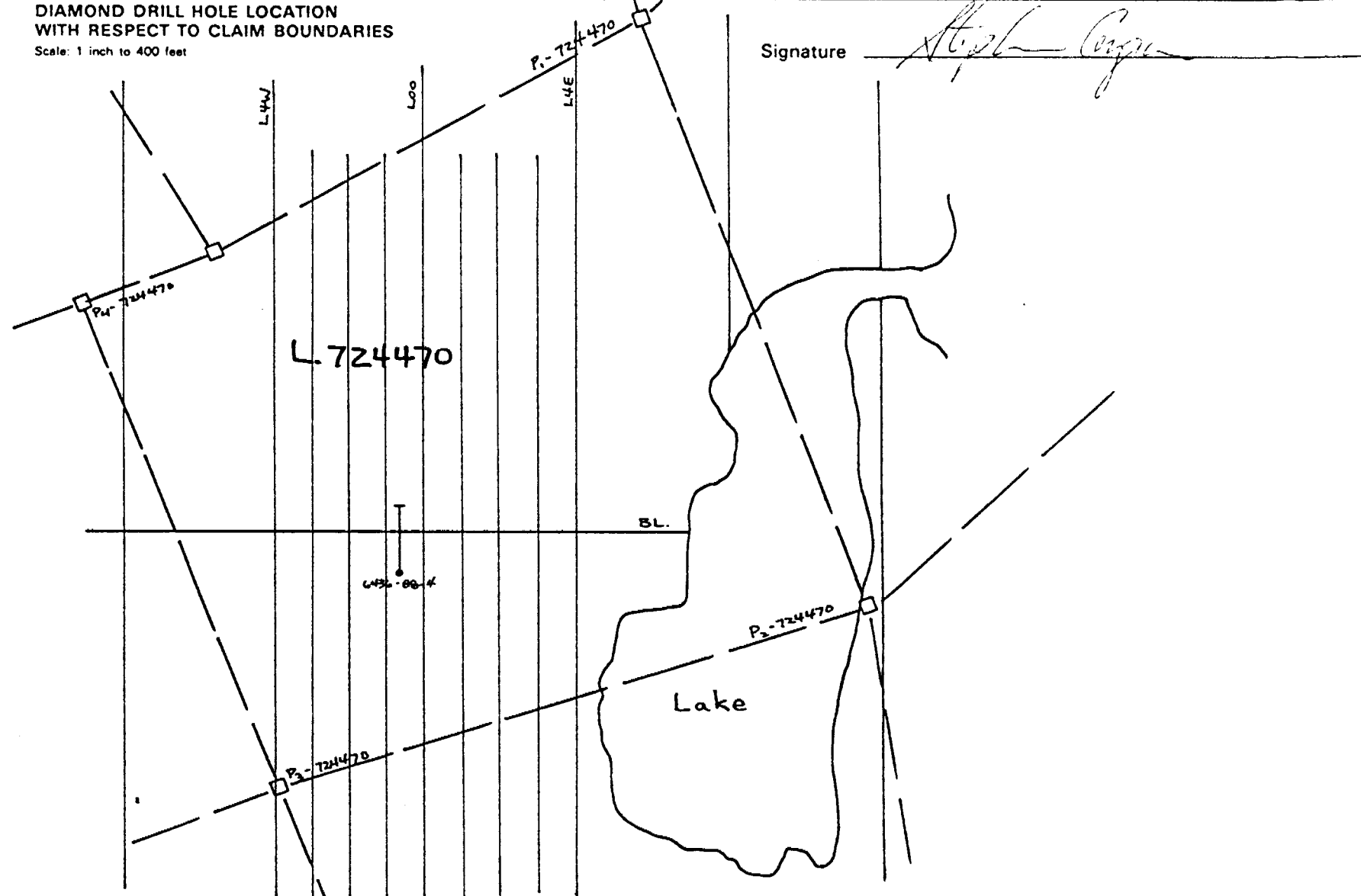
Hole No. 6436 - 88 - 4

LOCATION	DIP TEST		LEVEL	HORIZONTAL COMPONENT	DATE STARTED
AREA or TWP. <u>Cleaver Twp.</u>	FOOTAGE	ANGLE		<u>Surface</u>	<u>182.00</u>
		RECORDING	CORRECTED	<u>BQ core 1-7/16 inch</u>	VERTICAL COMPONENT <u>364.00</u>
CLAIM NO. <u>L.724470</u>	<u>0.00</u>			ELEVATION	DATE FINISHED
	<u>200.00</u>			LATITUDE <u>0+67W</u>	LOGGED BY <u>S. Conquer</u>
	<u>410.00</u>			DEPARTURE <u>1+10S</u>	PURPOSE <u>to test known gold bearing structure</u>
NTS <u>42 A/2</u> UTM				LENGTH <u>407.00</u>	TOT RECOVERY <u>99.9%</u>
				CORE LOCATION <u>Cleyo Resources, Timmins</u>	

DIAMOND DRILL HOLE LOCATION SKETCHES
CLAIM MAP Scale: 1 inch to 1/2 mile



DIAMOND DRILL HOLE LOCATION WITH RESPECT TO CLAIM BOUNDARIES
Scale: 1 inch to 400 feet



David R. Bell Geological Services Inc.

DIAMOND DRILL HOLE LOG

PROJECT 6436- Cleaver Twp.

Company Cleyo Resources Inc.

HOLE No. 6436-88-4 Page 1 of 2

FOOTAGE		ROCK TYPE AND DESCRIPTION (alteration, structure, mineralization)	CORE ANGLES TO AXIS	% SULPHIDES	SAMPLE				ANALYTICAL RESULTS								
FROM ft	TO ft				NUMBER 6436	FROM ft	TO ft	LENGTH	AU ppb	AU oz/t							
0.00	7.00	Overburden - casing left in ground															
7.00		Basalt - fine to very fine grained, w/m.g and aphanitic sections locally, dark green to locally black - locally numerous fractures-carb.filled - massive and pillowed sections, magnetic - pillowed sections show variolites, hyaloclastite, vesicules (amygdules) - pillows are the same as in holes - 88-1,-2,-3 7.00-46.00: f-mg massive flow, gn → dark green,magnetic 46.00-61.00: f-v.f.g. massive flow, 61.00-92.70: v.fg - aphanitic 80.70-81.70: "granitic"-pk intrusive, cb'd w/mafic 86.60-82.70: phenocryst, tr-1% diss py same as hole -88-3 92.70- 300.00: pillowed flows - selvages very tight, showing black silicified alteration into pillow centre 112.30-114.90: selvage w/ 1% cube py 138.40-138.70: cb'd - sericitic (buff colour),section fg diss py 10-15% in this interval but overall in sample 1-2% 211.10-212.60: section w/ pyritic-sericitic halos around cb filled fracture @ 211.70 217.20-218.80: sericitic-pyritic-cb'd section-breccia															
						-0163	77.00	80.70	3.70	1							
						-0164	80.70	81.70	1.00	8							
						-0165	81.70	86.60	4.90	4							
						-0166	86.60	92.70	6.10	3							
						-0167	92.70	97.00	4.30	1							
						-0168	112.30	114.90	2.60	6							
						-0169	134.20	137.90	3.70	4							
						-0170	137.90	138.90	1.00	21							
						-0171	138.90	141.90	3.00	9							
						-0172	207.00	211.10	4.10	7							
						-0173	211.10	212.60	1.50	10							
						-0174	212.60	217.20	4.60	13							
				5-7		-0175	217.20	218.80	1.60	2250	0.071						

David R. Bell Geological Services Inc.

DIAMOND DRILL HOLE RECORD

Project 6436- Cleaver Twp.

Company Cleyo Resources Inc.

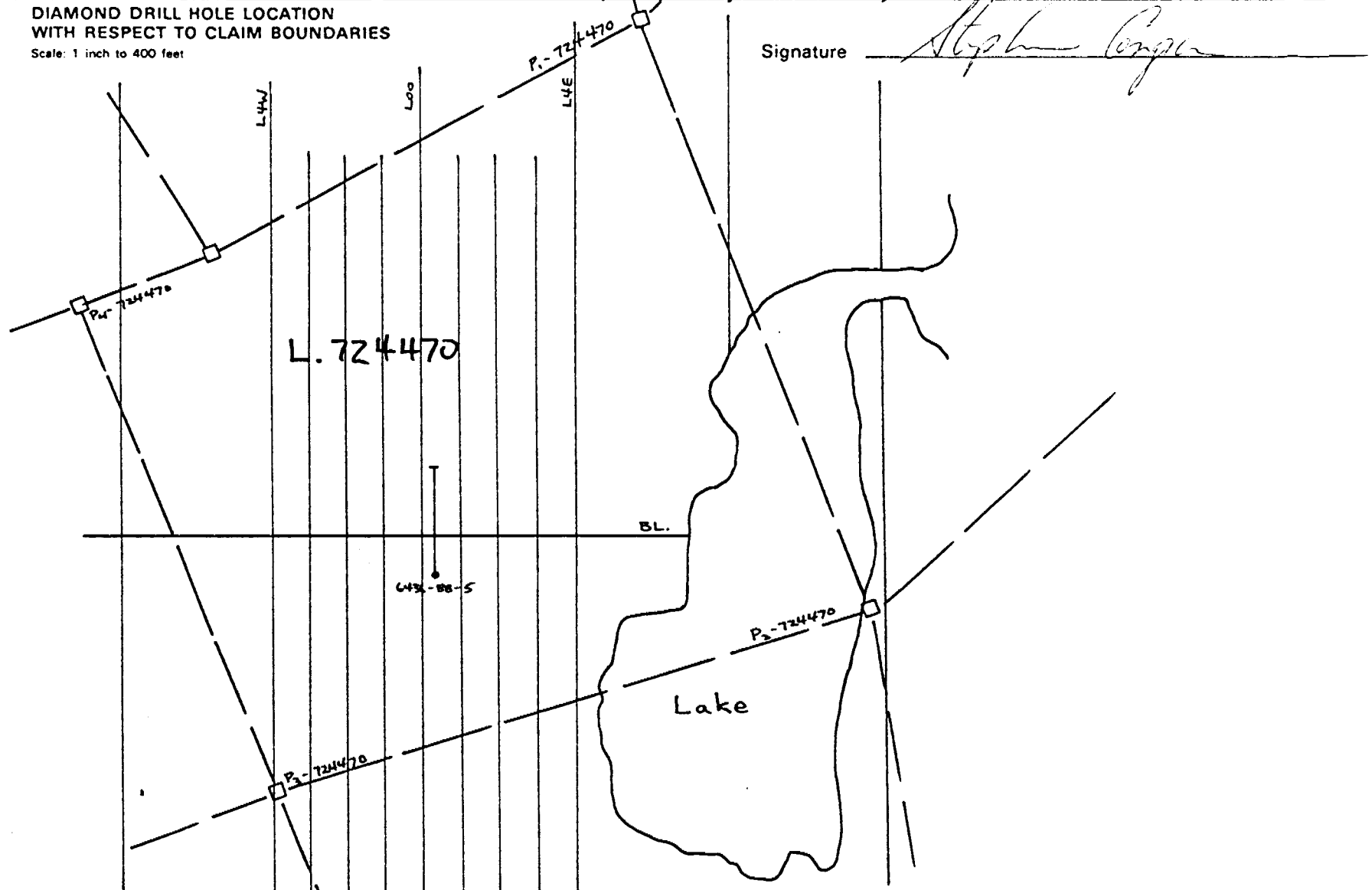
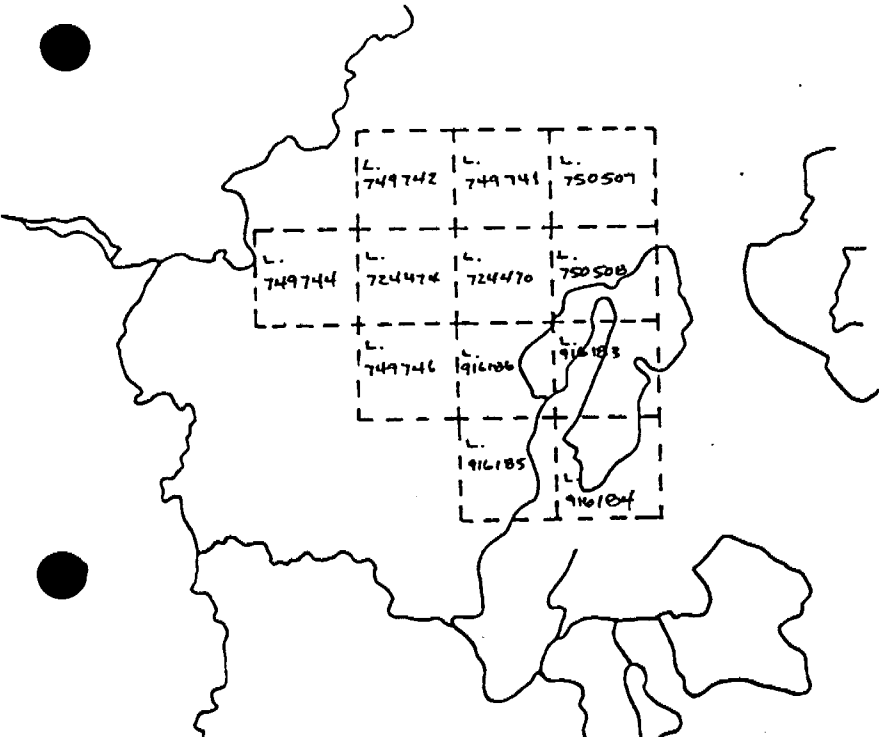
Hole No. 6436 - 88 -5

LOCATION	DIP TEST		LEVEL	HORIZONTAL COMPONENT	DATE STARTED
AREA of TWP <u>Cleaver Twp.</u>	FOOTAGE	ANGLE		VERTICAL COMPONENT	DATE FINISHED
		RECORDING	CORRECTED		
CLAIM NO <u>L.724470</u>	0.00			BEARING	LOGGED BY <u>S. Conquer</u>
	200.00				
NTS <u>42 A/ 2</u> UTM	407.00			020°	PURPOSE to test gold bearing zone
				LENGTH <u>407.00</u>	TOT. RECOVERY <u>99.9%</u>
				CORE LOCATION <u>Cleyo Resources, Timmins</u>	
			LEVEL <u>Surface</u>		
			ELEVATION <u>BQ core - 1 7/16 inch</u>		
			LATITUDE <u>0+33E</u>		
			DEPARTURE <u>1+05S</u>		

DIAMOND DRILL HOLE LOCATION SKETCHES
CLAIM MAP Scale: 1 inch to 1/2 mile

DIAMOND DRILL HOLE LOCATION
WITH RESPECT TO CLAIM BOUNDARIES
Scale: 1 inch to 400 feet

Signature *Stephen Conquer*



David R. Bell Geological Services Inc.

DIAMOND DRILL HOLE RECORD

Project 6436 - Cleaver Twp.

Company Cleyo Resources Inc.

Hole No. 6436 - 88 - 6

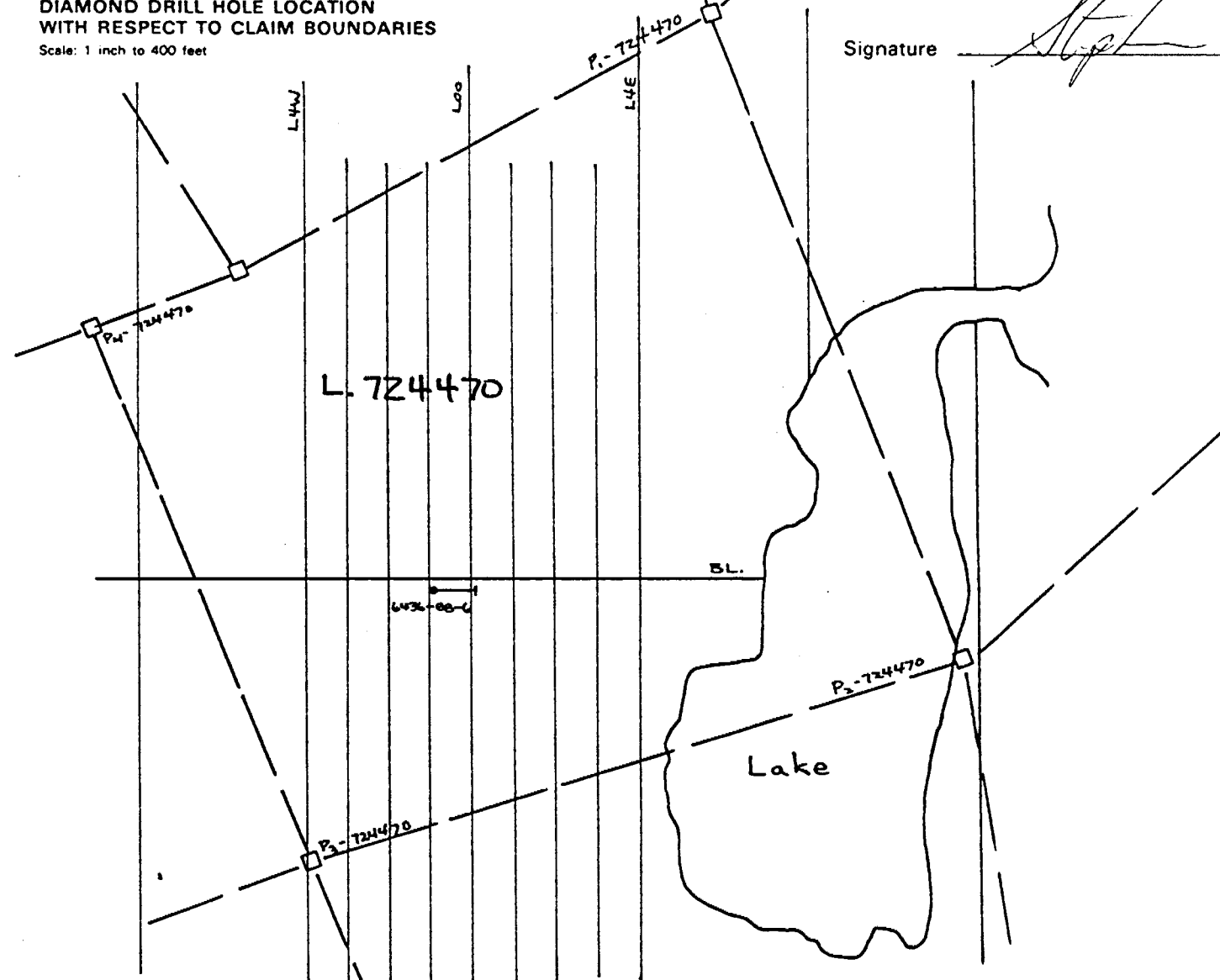
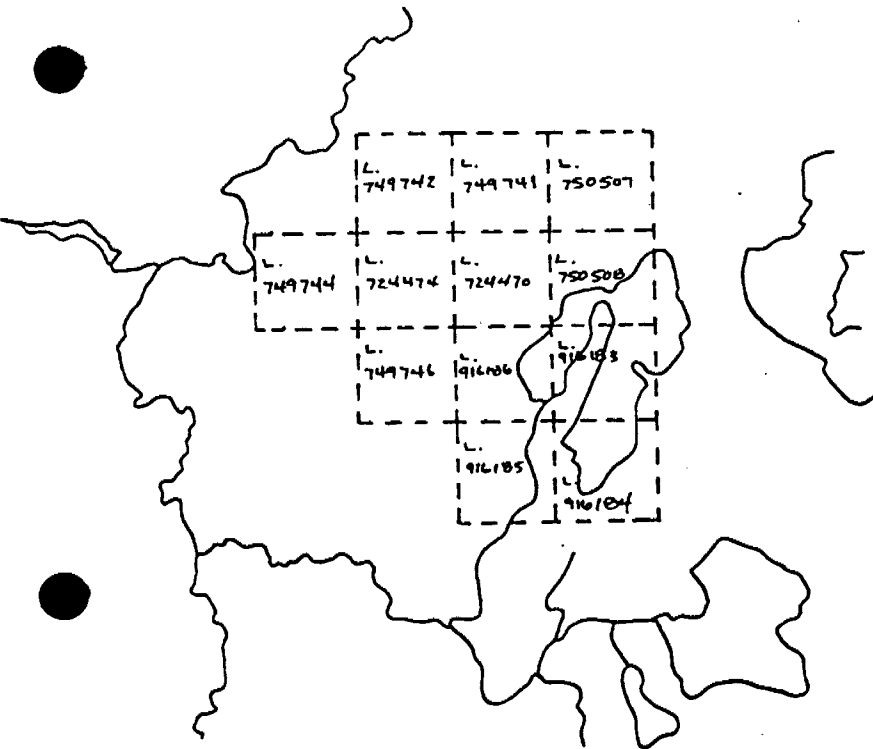
LOCATION	DIP TEST		LEVEL Surface	HORIZONTAL COMPONENT 104.00	DATE STARTED
AREA of TWP. <u>Cleaver Twp.</u>	FOOTAGE <u>0.00</u>	ANGLE		BQ core - 1-7/16 inch	VERTICAL COMPONENT 104.00
		RECORDING	CORRECTED		
CLAIM NO <u>L. 724470</u>	<u>147.00</u>		<u>-45</u>	ELEVATION	DATE FINISHED
NTS <u>42 A/ 2</u> UTM				LATITUDE <u>0+90W</u>	LOGGED BY <u>S. Conquer</u>
				DEPARTURE <u>0+30S</u>	PURPOSE <u>to test known gold bearing zone</u>
				CORE LOCATION <u>Cleyo Resources, Timmins</u>	TOT. RECOVERY <u>99.9%</u>

DIAMOND DRILL HOLE LOCATION SKETCHES
CLAIM MAP Scale: 1 inch to 1/2 mile

DIAMOND DRILL HOLE LOCATION WITH RESPECT TO CLAIM BOUNDARIES
Scale: 1 inch to 400 feet

Signature _____

S. Conquer



David R. Bell Geological Services Inc.

DIAMOND DRILL HOLE RECORD

Project 6436 - Cleaver Twp.

Company Cleyo Resources Inc.

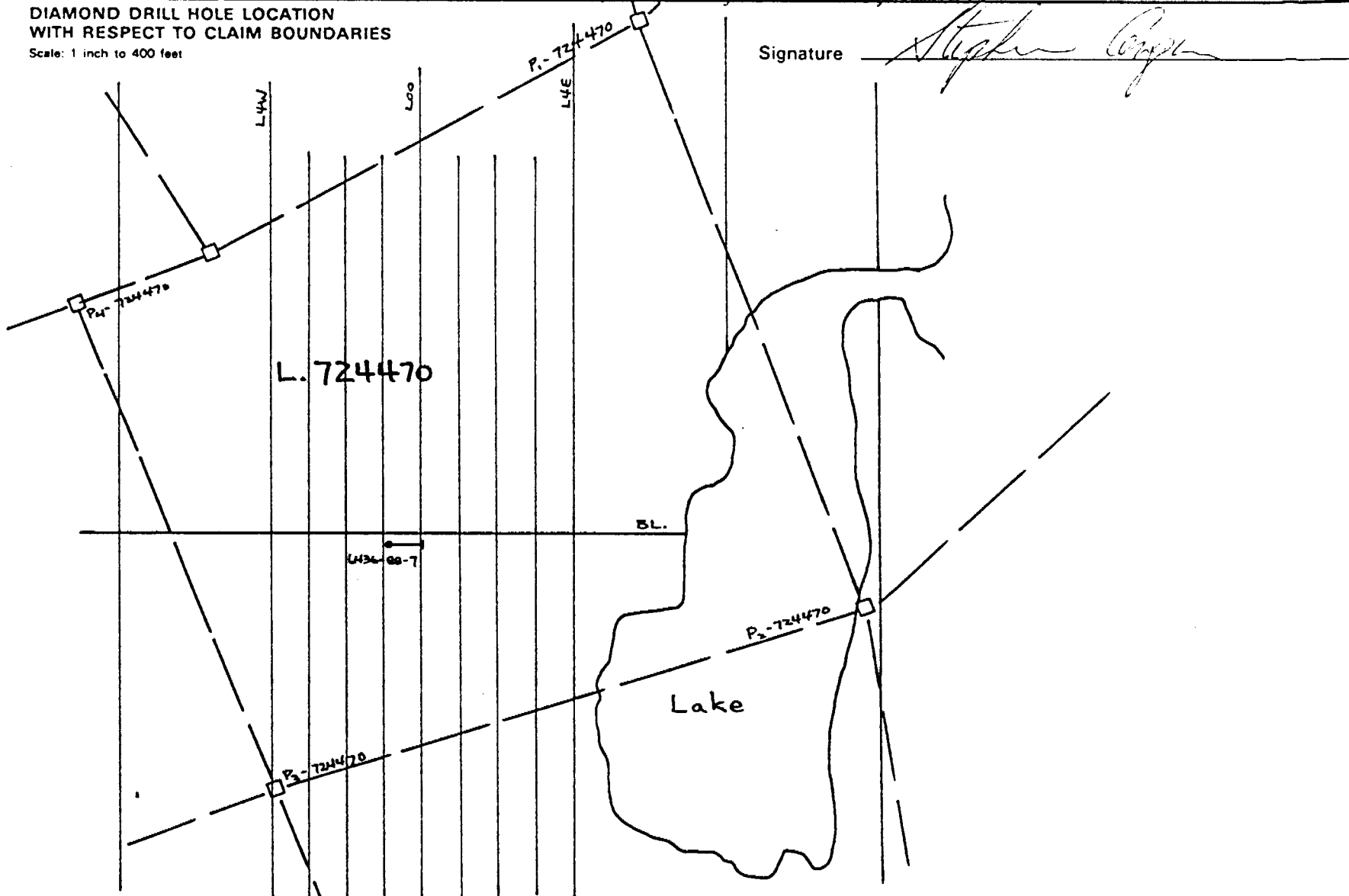
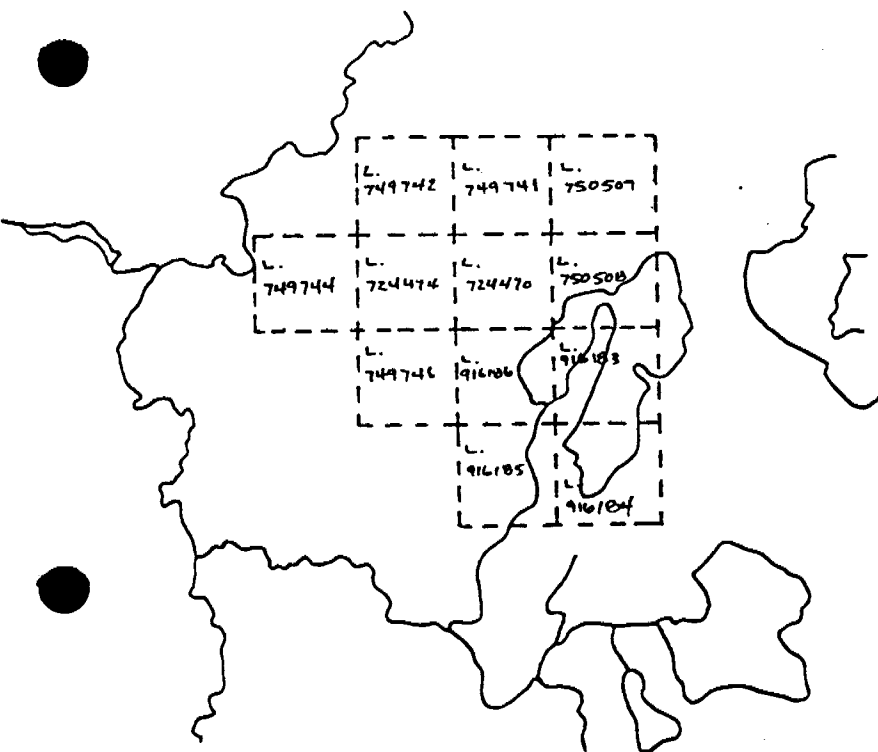
Hole No. 6436 - 88 - 7

LOCATION	DIP TEST		LEVEL Surface	HORIZONTAL COMPONENT 95.00	DATE STARTED
AREA or TWP Cleaver Twp.	FOOTAGE	ANGLE		BQ core - 1-7/16 inch	VERTICAL COMPONENT 197.00
	0.00	RECORDING	CORRECTED		
CLAIM NO L. 724470	220.00		-65°	LATITUDE 0+90W	DATE FINISHED June 6, 1988
NTS 42 A/2 UTM			-63°	DEPARTURE 0+30S	BEARING 110°
				LENGTH 224.00 feet	LOGGED BY S. Conquer
				CORE LOCATION Cleyo Resources, Timmins	PURPOSE to test known gold bearing zone
					TOT. RECOVERY 99.9%

DIAMOND DRILL HOLE LOCATION SKETCHES
CLAIM MAP Scale: 1 inch to 1/2 mile

DIAMOND DRILL HOLE LOCATION WITH RESPECT TO CLAIM BOUNDARIES
Scale: 1 inch to 400 feet

Signature *Stephen Conquer*



OM88-6-L-0
DAVID R. BELL GEC

261 THIRD AVE. BOX 1250
TIMMINS, ONTARIO
P4N 7J5
(705) 264-4286



42A02NW0100 63.5493 CLEAVER

ST. CATHARINES, ONTARIO
L2R 6W8
(416) 641-2255

900

June 17, 1988

Mr. Cleo Clement
Cleyo Resources Inc.
1165 MacLean Drive
Timmins, Ontario
P4N 7C3

Dear Cleo:

Re: Cleyo Resources Inc.-Cleaver Twp. Diamond Drill Program Results : Project 6436

The intent of this letter is to apprise you of the situation regarding the results from the above mentioned drilling and the filing of said work to keep the claim status of this property in good standing.

In regards to the status of the Cleaver Twp. claims, as of the completion of this drill program enough work has been completed and subsequently submitted for approval that all of these 12 claims will have a total of 200 man days of assessment credits. This assessment credit total is enough such that the entire property can be brought to lease if your company desires. A total of five years, from the fifth to the tenth anniversaries, is available within which application for lease can be made. The earliest that the application for lease can be made is on or before the sixth anniversary of the recording date of each respective claim, but if the company does not wish to incur the large expenditures that are required to complete the process of bring a property to lease, an extension of time can be applied for. This same process can be repeated every year until the tenth anniversary of the recording date, when application for lease has to be made or the property will be allowed to come open. An examination of Table 3 will I hope clarify this situation.

In regards to the diamond drilling, the results from this program were not as we might have expected. Although "ore grade" intersections were not found, several anomalous intersections were received, the highest of these was 0.081 oz Au/ton across 1.5 feet, while the widest was 0.071 oz Au/ton across 3.9 feet (see Table 2). While the continuity between these results does not appear to be that good, some trends become apparent upon closer examination of the data. A small and fairly inexpensive "winkie" drill program should either confirm or rule out these possible trends.

Other than this "winkie" drilling, another avenue that you may wish to pursue is the reported 1.0 oz grab sample assay that Orville Hicks has apparently mentioned to Don Warren, if you could find the location where this sample was collected then surface stripping may provide some insight into this very interesting report.

If these two avenues do not provide satisfactory results then it is my recommendation that the claim block should be kept in good standing, but without applying for lease until absolutely necessary (and then only if you feel that it is warranted), and that no further work should be undertaken. If, during the time prior to the tenth anniversary of the recording of these claims, other exploration activities by third parties in the vicinity of the Cleaver Twp. property locate significant and important mineralization, then further work may be warranted.

I trust all is in order, but if any questions do arise then do not hesitate to contact this office.

Sincerely



Stephen Conquer
Exploration Manager

encls.

cc. Bell, D.R.

file-6436 corresp.

DAVID R. BELL GEOLOGICAL SERVICES INC.

261 THIRD AVE., BOX 1250
TIMMINS, ONTARIO
CAN 7J5
(705) 264-4286

8 CHURCH ST., BOX 637
ST. CATHARINES, ONTARIO
L2R 6W8
(416) 641-2255

June 17, 1988

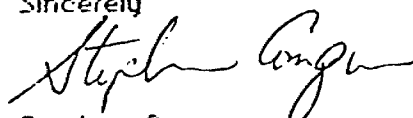
Mr. Mike Wiernier
Mining Recorder
Larder Lake Mining Division
Ministry of Northern Development and Mines
P.O. Box 984
4 Government Road East
Kirkland Lake, Ontario
P2N 1A2

Dear Mr. Wiernier:

Enclosed please find one (1) report of work and two (2) sets of diamond drill logs for the drilling completed on the Cleaver Twp. property of Cleyo Resources Inc. On behalf of Cleyo Resources, I would like to have the assessment credits from this work applied to the 12 claims that comprise this property.

I would also appreciate notification of receipt of this information sent to this office and to Mr. Cleyo Clement for Cleyo Resources Inc., at the address shown on the report of work.

Sincerely



Stephen Conquer
Exploration Manager

encls.

cc. C. Clement

file-6436 corresp., claims



Ministry of
Natural
Resources

Report
of Work

Instructions - Supply required data on a separate form for each type of work to be recorded (see table below).
- For Geo-technical work use form no. 1362 "Report of Work (Geological, Geophysical, Geochemical and Expenditures)".

Mining Act

Name and Postal Address of Recorded Holder Cleo Clement 1165 Mac Lean Dr., Timmins, Ontario. P4N 7C3	Prospector's Licence No. M. 20951
---	--------------------------------------

Summary of Work Performance and Distribution of Credits

Total Work Days Cr. claimed 1160	Mining Claim		Work Days Cr.	Mining Claim		Work Days Cr.	Mining Claim		Work Days Cr.
	Prefix	Number		Prefix	Number		Prefix	Number	
for Performance of the following work. (Check one only) <input type="checkbox"/> Manual Work <input type="checkbox"/> Shaft Sinking Drifting or other Lateral Work. <input type="checkbox"/> Compressed Air, other Power driven or mechanical equip. <input type="checkbox"/> Power Stripping <input checked="" type="checkbox"/> Diamond or other Core drilling <input type="checkbox"/> Land Survey	L.	724470	60	L.	916183	180			
		724474	60		916184	180			
		749741	60		916185	160			
		749742	60		916186	160			
		749744	60						
		749746	60						
		750507	60						
	750508	60							

All the work was performed on Mining Claim(s): L. 724470

Required Information eg: type of equipment, Names, Addresses, etc. (See Table Below)

Drilling equipment owned by Mr. Ed Colbert, 167 Lakeshore Lane, Timmins, Ontario. P4N 7A
Drilling conducted during the time period from May 6, 1988 to June 1, 1988.

Date of Report June 14, 1988	Recorded Holder or Agent (Signature) <i>Stephen Conquer</i>
---------------------------------	--

Certification Verifying Report of Work

I hereby certify that I have a personal and intimate knowledge of the facts set forth in the Report of Work annexed hereto, having performed the work or witnessed same during and/or after its completion and the annexed report is true.

Name and Postal Address of Person Certifying Stephen Conquer - David R. Bell Geological Services Inc., P.O. Box 1250, 261 Third Ave., Timmins, Ontario	Date Certified June 14, 1988	Certified by (Signature) <i>Stephen Conquer</i>
--	---------------------------------	--

Table of Information/Attachments Required by the Mining Recorder

Type of Work	Specific information per type	Other information (Common to 2 or more types)	Attachments
Manual Work.	Nil	Names and addresses of men who performed manual work/operated equipment, together with dates and hours of employment.	Work Sketch: these are required to show the location and extent of work in relation to the nearest claim post.
Shaft Sinking, Drifting or other Lateral Work			
Compressed air, other power driven or mechanical equip.	Type of equipment		