

42A02NW0105 12 CLEAVER

010

DIAMOND DRILLING

TOWNSHIP: CLEAVER

REPORT NO: 12

WORK PERFORMED FOR: Cleo Clement

RECORDED HOLDER: Same as Above [xx]
: Other []

<u>Claim No.</u>	<u>Hole No.</u>	<u>Footage</u>	<u>Date</u>	<u>Note</u>
L 724470	6436-88-1	253'	May/88	(1)(2)
	6436-88-2	410'	May/88	(1)(2)
	6436-88-3	257'	May/88	(1)(2)
	6436-88-4	407'	May/88	(1)(2)
	6436-88-5	407'	May/88	(1)(2)
	6436-88-6	147'	May/88	(1)(2)
	6436-88-7	224'	May-June/88	(1)(2)
		<u>2105'</u>		

Notes: (1) #W8808.278, filed in Oct/88
(2) comparable to OMEP submission 0M88-6-L-042.
for analytical results, see file 63.5493.
filed June/91

David R. Bell Geological Services Inc.

DIAMOND DRILL HOLE LOG

PROJECT 6436- Cleaver Twp.

HOLE No. 6436-88-1 Page 1 of 3

Company Cleyo Resources Inc.

FOOTAGE		ROCK TYPE AND DESCRIPTION (alteration, structure, mineralization)	CORE ANGLES TO AXIS	% SULPHIDES	SAMPLE				ANALYTICAL RESULTS							
FROM ft	TO ft				NUMBER 6436	FROM ft	TO ft	LENGTH	AU ppb	AU oz/t						
0.00	10.00	Overburden - casing left in ground														
10.00	253.00	Basalt - fine to very fine grained, locally aphanitic - dark green with locally black sections (aphanitic) - strongly magnetic - massive, vesicular and pillowed flow varieties are present - numerous narrow fractures, mostly filled w/ carbonate some filled with chlorite, most randomly oriented - narrow quartz filled sections, veinlets or silicified sections - minor brecciation - py averages, tr - 1%														
		10.00-37.00: vesicular flows - fg, dk green, strongly magnetic, with carb. filled vesicles up to 0.1 inch, vesicles filled with carb. or quartz/carb. - dominant fracture sets @60° & 17° TCA and 55° TCA, all fractures less than 0.1 inch wide - siliceous sections - purgy to black @22.50 ft. w/2% finely disseminated pyrite 25.00 ft. " " " " 27.50 ft with tr pyrite -55° TCA fracture set have pale brown bleached halos with fine disseminations of py (lots of py) @ 15.50ft. 30.40', 32.00', 32.30 late feature, cross-cut other fractures														
						-0060	10.00	15.00	5.00							
						-0061	15.00	16.00	1.00							
						-0062	16.00	21.00	5.00							
						-0063	21.00	22.10	1.10							
						-0064	22.10	23.10	1.00							
						-0065	23.10	24.40	1.30							
						-0066	24.40	25.40	1.00							
						-0067	25.40	27.00	1.60							
						-0068	27.00	28.00	1.00							
						-0069	28.00	30.10	2.10							
						-0070	30.10	31.40	1.30							
						-0071	31.40	32.40	1.00							
						-0072	32.40	37.00	4.60							

David R. Bell Geological Services Inc.

DIAMOND DRILL HOLE LOG

PROJECT 6436 - Cleaver Twp.

HOLE No. 6436 - 88- 1 Page 2 of 3

Company Clevo Resources Inc.

FOOTAGE		ROCK TYPE AND DESCRIPTION (alteration, structure, mineralization)	CORE ANGLES TO AXIS	% SULPHIDES	SAMPLE				ANALYTICAL RESULTS						
FROM ft	TO ft				NUMBER 6436	FROM ft	TO ft	LENGTH	AU ppb	AU oz/t					
10.00	253.00	Basalt - Cont'd													
		37.00-120.00: f-v.f.g massive flows, magnetic dk green, qtz. veins locally, leucoxene locally													
		37.00-39.80 shows brecciation w/angular qtz and / or cb frags py 1-2%, sin also 37.00-37.30: foliated section w/ cb py to 10%, foliated basal flow			-0073	37.00	39.80	2.80							
					-0074	39.80	41.30	1.50							
					-0075	41.30	46.40	5.10							
		39.80-41.30: only minor brecciation, minor cpy @41.20 and cb fractures w/py halos @40.30ft													
		46.40-48.50: 1 inch qtz vn @20° TCA, tr-cpy			-0076	46.40	48.50	2.10							
		48.50-53.50: w/3 narrow qtz-cb vn of 1" @40°TCA		tr	-0077	48.50	53.50	5.00							
		53.50-83.50: massive flow w/ numerous randomly oriented cb filled fractures			-0078	53.50	58.50	5.00							
					-0079	58.50	63.50	5.00							
					-0080	63.50	67.80	4.30							
		67.80-68.90: mafic dyke siliceous			-0081	67.80	68.90	1.10							
					-0082	68.90	73.10	4.20							
					-0083	73.10	78.10	5.00							
					-0084	78.10	80.40	2.30							
		80.40-83.50: massive flow w/4 qtz-cb veins @40° TCA w/ tr-1% py			-0085	80.40	83.50	3.10							
		101.90-103.40: massive flow w/2 qtz-cb veinlets w/py'c halos 1 @ 102.50 is 0.2 inch wide w/ py halos the other is 0.75 inch wide w/ halos 0.5 inch vein centre part is corb w/ outer qtz ie ch vein w/qtz halo w/ py halos w/ py halos core is bleached to a pale colour			-0086	100.60	101.90	1.30							
					-0087	101.90	103.40	1.50							
					-0088	103.40	104.40	1.00							
		120.00-253.00: pillowed flow, v.f.g.- aphanitic centres w/ silicified vesicular, hyalocastite selvages py generally trace locally to 1%			-0089	117.00	120.00	3.00							
					-0090	120.00	121.00	1.00							
					-0091	121.00	123.00	2.00							

David R. Bell Geological Services Inc.

DIAMOND DRILL HOLE RECORD

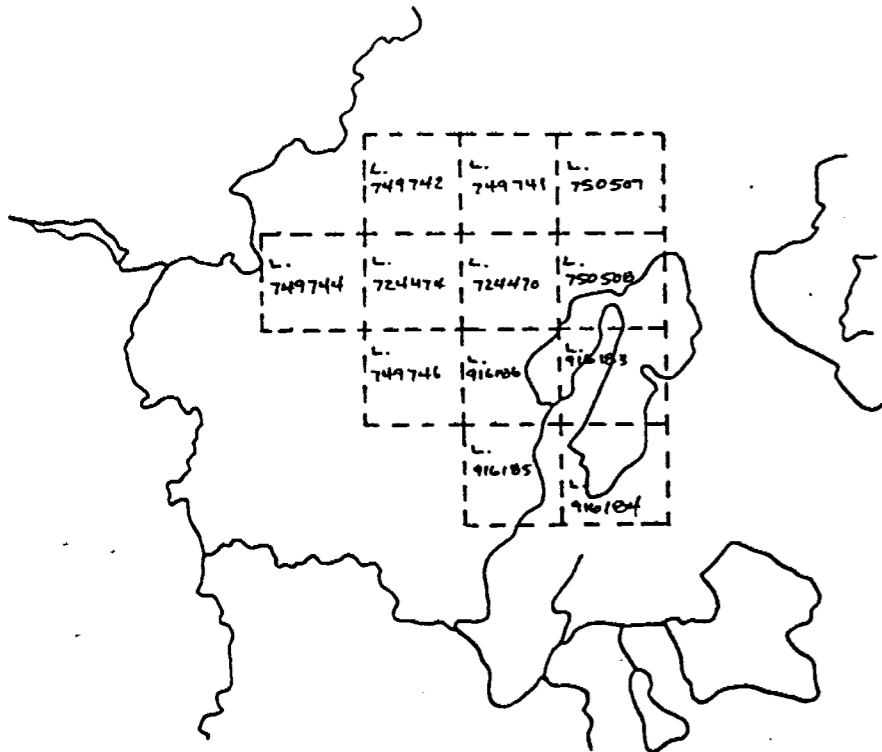
Project 6436 - Cleaver Twp.

Company Cleyo Resources Inc.

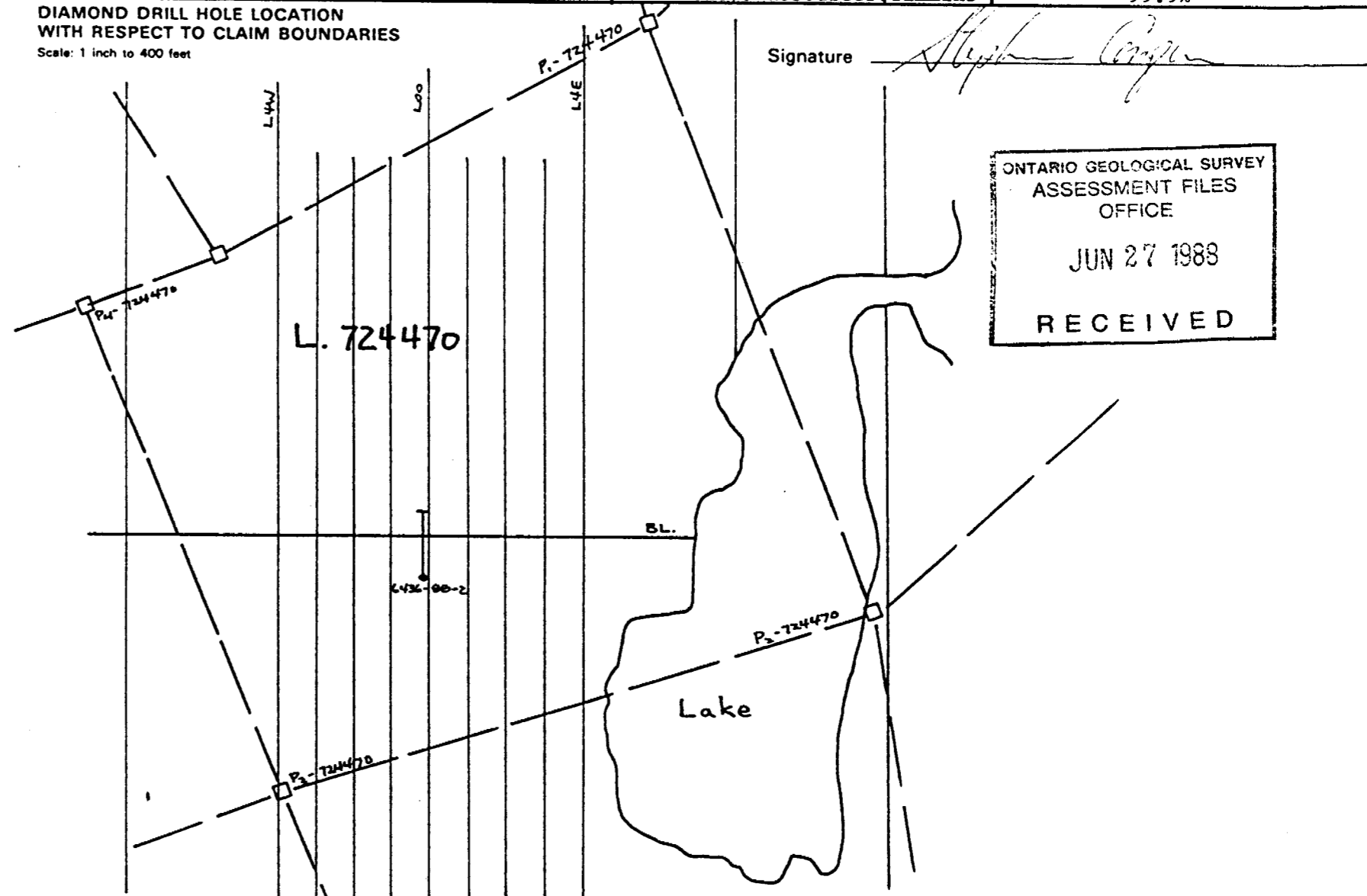
Hole No. 6436 - 88 - 2

LOCATION	DIP TEST		LEVEL	HORIZONTAL COMPONENT	DATE STARTED
AREA or TWP Cleaver Twp.	FOOTAGE	ANGLE		184.00	
		RECORDING	CORRECTED		DATE FINISHED
CLAIM NO. L. 724470	0.00		-65°	BQ core - 1-7/16 inch	
	200.00		-63°	ELEVATION	LOGGED BY S. Conquer
	410.00		-63°	LATITUDE 0+17W	PURPOSE to test known gold bearing zone
NTS 42 A/ 2 UTM				DEPARTURE 1+10S	TOT. RECOVERY 99.9%
				CORE LOCATION Cleyo Resources, Timmins	

DIAMOND DRILL HOLE LOCATION SKETCHES
CLAIM MAP Scale: 1 inch to 1/2 mile



DIAMOND DRILL HOLE LOCATION WITH RESPECT TO CLAIM BOUNDARIES
Scale: 1 inch to 400 feet



ONTARIO GEOLOGICAL SURVEY
ASSESSMENT FILES
OFFICE

JUN 27 1988

RECEIVED

David R. Bell Geological Services Inc.

DIAMOND DRILL HOLE LOG

PROJECT 6436 - Cleaver Twp.

HOLE No. 6436-88-2 Page 1 of 3

Company Cleyo Resources Inc.

FOOTAGE		ROCK TYPE AND DESCRIPTION (alteration, structure, mineralization)	CORE ANGLES TO AXIS	% SULPHIDES	SAMPLE				ANALYTICAL RESULTS						
FROM ft	TO ft				NUMBER 6436	FROM ft	TO ft	LENGTH	Au ppb	Au oz/t					
0.00	5.00	Overburden - casing left in ground													
5.00	10.00	Basalt -f-vfg, dk green to black, strongly magnetic -massive, vesicular and pillowed varieties are present, also amygdules, hyaloclastite -numerous cb & cb-qtz filled fractures display -random orientation -qtz-cb veins noted locally -also flow brecciated section 5.00-25.20: vesicular flow, f-vfg, dk green to black w cb and/or qtz-cb filled vesicles that are up to 0.1 inch, size and percent distribution decrease down hole -fractures w/cb may have py halos @ 16.50 ft. 16.20-18.20: qtz-cb veining in 2 veins, tr py 1-0.3 inch @16.70 ft and 1-0.2.inch @17.80ft 25.20-137.00: f-vfg massive flows, dk to black strongly magnetic, leucoxene locally 25.20-26.50: cb-py foliated w/ 1-2% py as in hole 6436-88-1 37.00-37.30 ft 29.30-40.50: massive flow w/ cb filled fractures that have py halos ie. 29.30, 30.60, 33.90 34.50, 36.00, 36.60, 36.80, 40.20 49.30: 0.5 inch cb-py section in fracture, 2% py, weak foliation													
					-0104	11.00	16.20	5.20							
					-0105	16.20	18.20	2.00							
					-0106	18.20	22.10	3.90							
					-0107	22.10	25.20	3.10							
					-0108	25.20	26.50	1.30							
					-0109	26.50	29.30	2.80							
					-0110	29.30	31.30	2.00							
					-0111	31.30	33.70	2.40							
					-0112	33.70	37.00	3.30							
					-0113	37.00	40.50	3.50							
					-0114	40.50	45.50	5.00							
					-0115	45.50	48.80	3.30							
					-0116	48.80	50.30	1.50							

David R. Bell Geological Services Inc.

DIAMOND DRILL HOLE RECORD

Project 6436 - Cleaver Twp.

Company Cleyo Resources Inc.

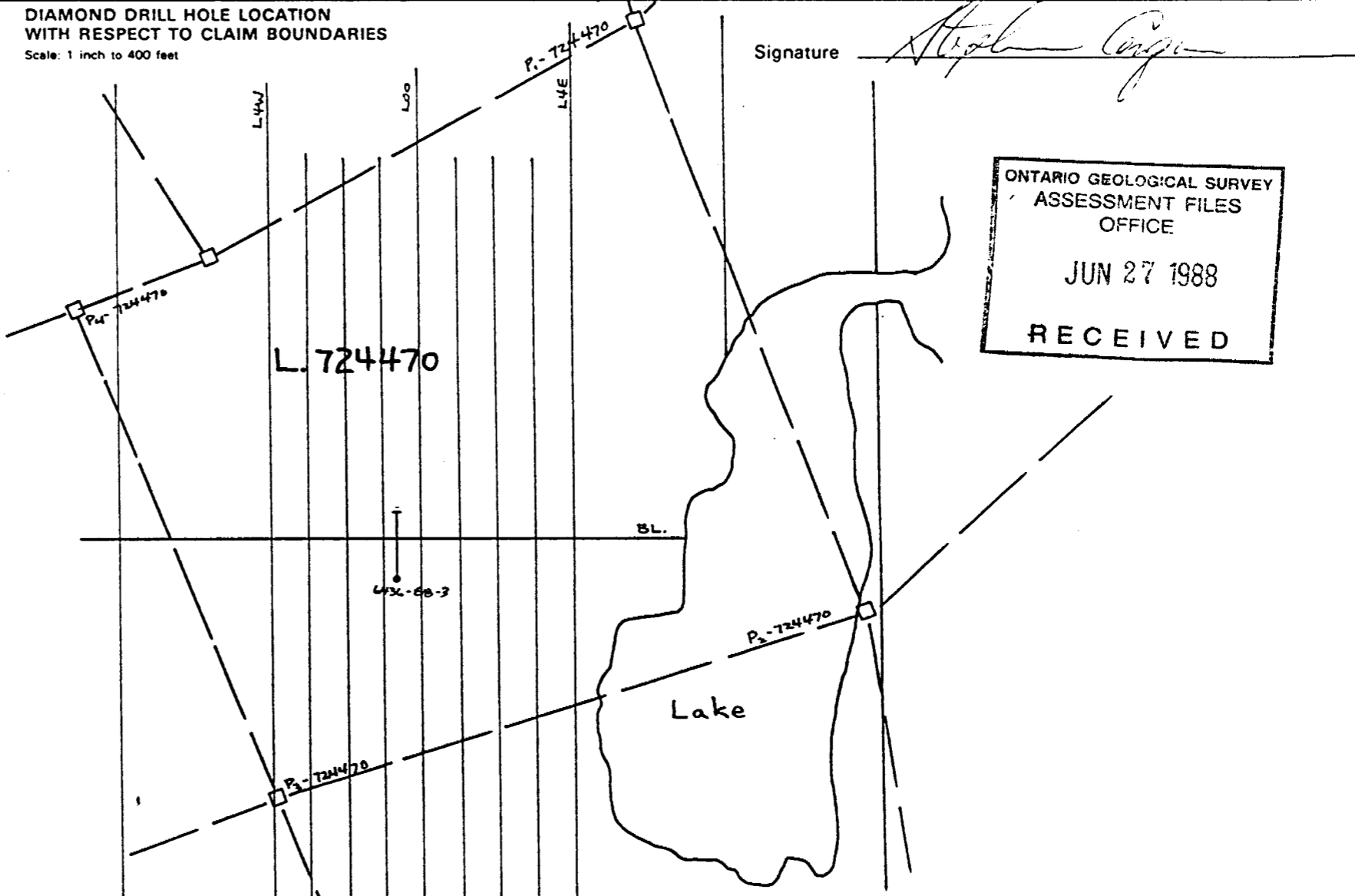
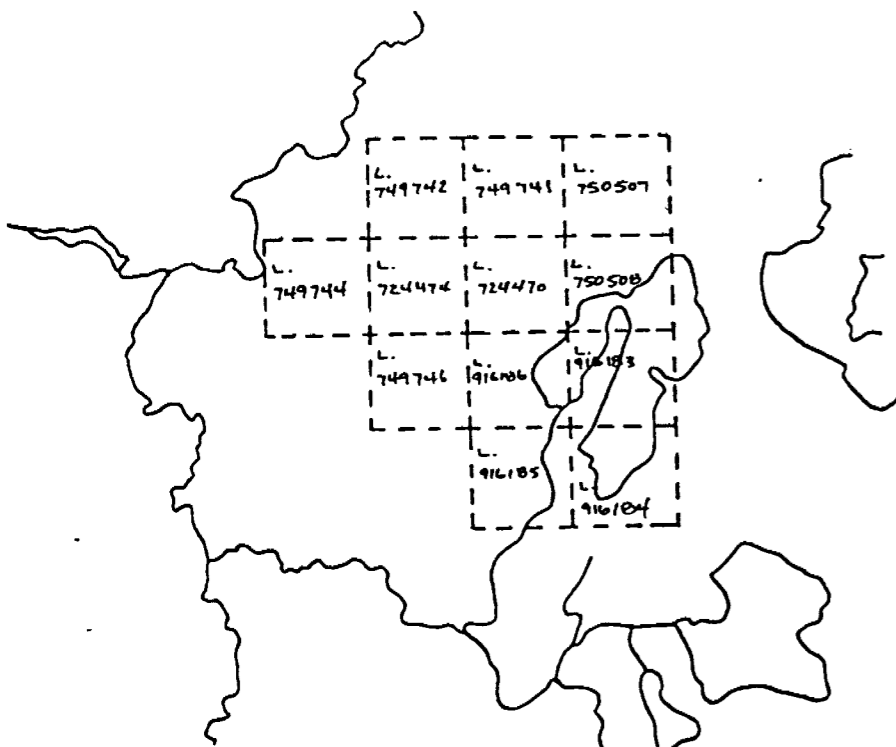
Hole No. 6436 - 88 - 3

LOCATION	DIP TEST		LEVEL	HORIZONTAL COMPONENT	DATE STARTED
AREA or TWP. <u>Cleaver Twp.</u>	FOOTAGE	ANGLE		<u>179.00</u>	DATE FINISHED
		RECORDING	CORRECTED	VERTICAL COMPONENT <u>179.00</u>	
CLAIM NO <u>L. 724470</u>	<u>0.00</u>			BEARING <u>020°</u>	LOGGED BY <u>S. Conquer</u>
	<u>125.00</u>		ELEVATION	LENGTH <u>257.00</u>	PURPOSE <u>to test known gold bearing zone</u>
	<u>247.00</u>		LATITUDE <u>0+67W</u>	CORE LOCATION <u>Cleyo Resources, Timmins</u>	TOT. RECOVERY <u>99.9%</u>
NTS <u>42 A/2</u> UTM			DEPARTURE <u>1+10S</u>		

DIAMOND DRILL HOLE LOCATION SKETCHES
CLAIM MAP Scale: 1 inch to 1/2 mile

DIAMOND DRILL HOLE LOCATION
WITH RESPECT TO CLAIM BOUNDARIES
Scale: 1 inch to 400 feet

Signature *S. Conquer*



ONTARIO GEOLOGICAL SURVEY
ASSESSMENT FILES
OFFICE

JUN 27 1988

RECEIVED

David R. Bell Geological Services Inc.

DIAMOND DRILL HOLE RECORD

Project 6436 - Cleaver Twp.

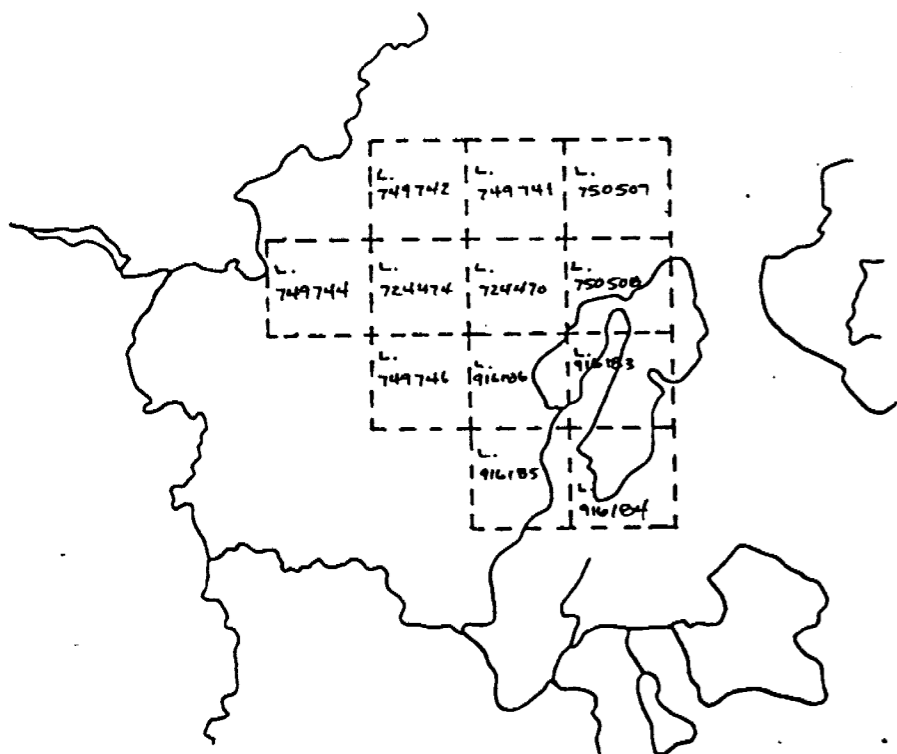
Company Cleyo Resources Inc.

Hole No. 6436 - 88 - 4

LOCATION		DIP TEST		LEVEL	HORIZONTAL COMPONENT	DATE STARTED
AREA or TWP Cleaver Twp.	FOOTAGE	ANGLE		Surface	182.00	
		RECORDING	CORRECTED	BQ core 1-7/16 inch	VERTICAL COMPONENT 364.00	DATE FINISHED
		0.00	-65	ELEVATION	BEARING 020°	LOGGED BY S. Conquer
CLAIM NO L.724470	200.00		-63	LATITUDE 0+67W	LENGTH 407.00	PURPOSE to test known gold bearing structure
	410.00		-63	DEPARTURE 1+10S	CORE LOCATION Cleyo Resources, Timmins	TOT. RECOVERY 99.9%
NTS 42 A/2	UTM					

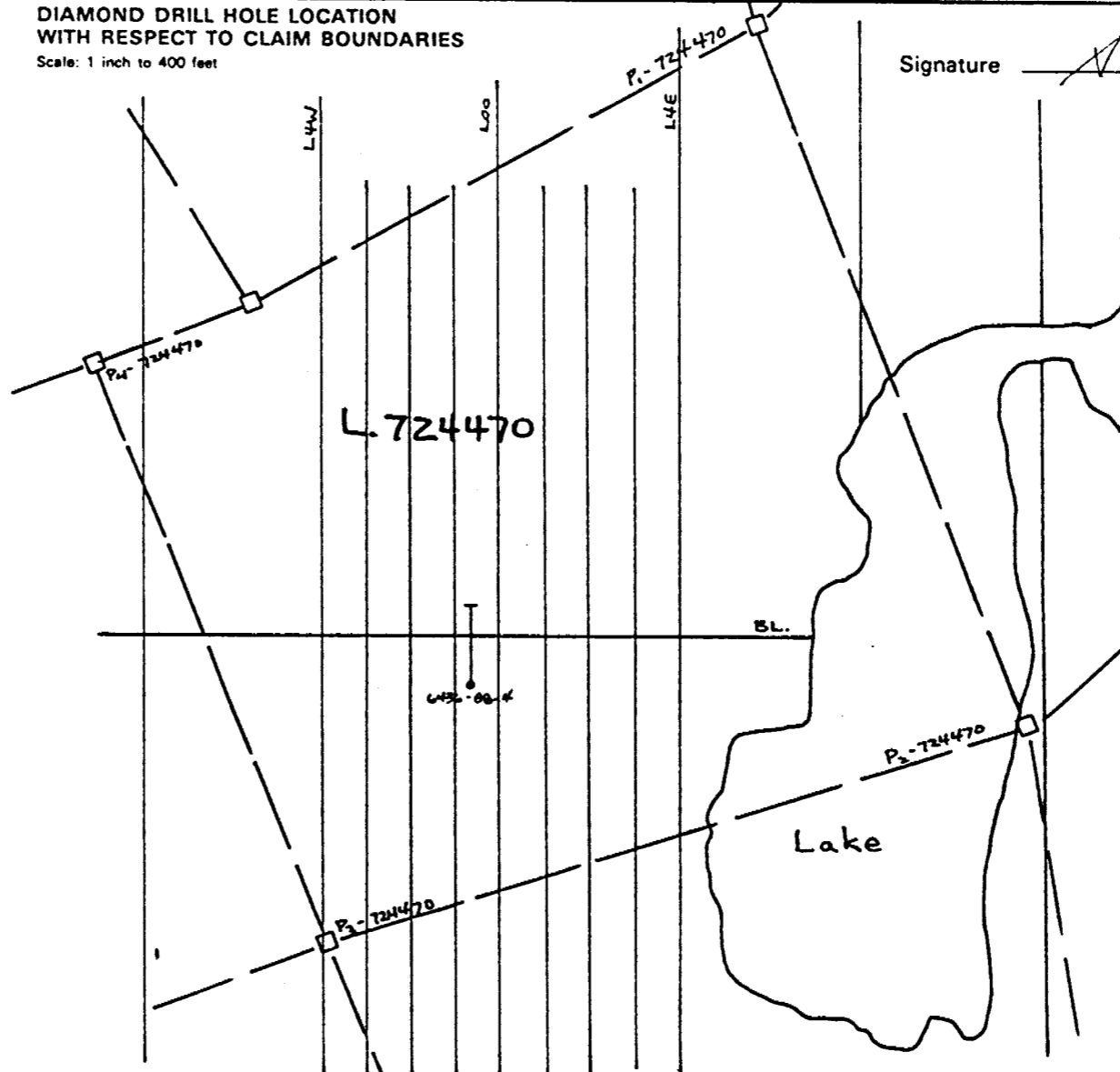
DIAMOND DRILL HOLE LOCATION SKETCHES

CLAIM MAP Scale: 1 inch to 1/2 mile

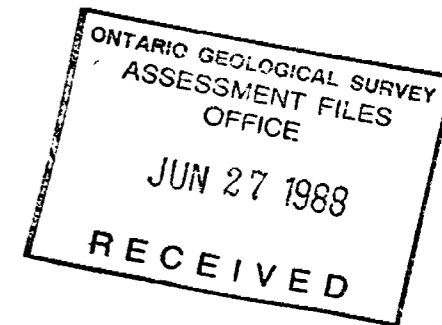


DIAMOND DRILL HOLE LOCATION WITH RESPECT TO CLAIM BOUNDARIES

Scale: 1 inch to 400 feet



Signature *S. Conquer*



David R. Bell Geological Services Inc.

DIAMOND DRILL HOLE RECORD

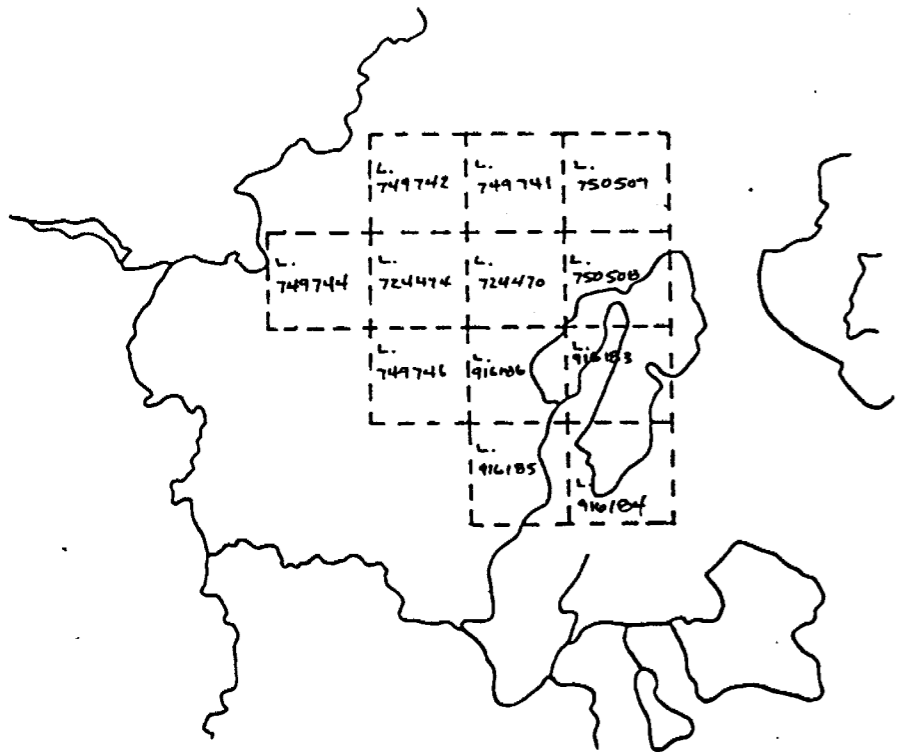
Project 6436- Cleaver Twp.

Company Cleyo Resources Inc.

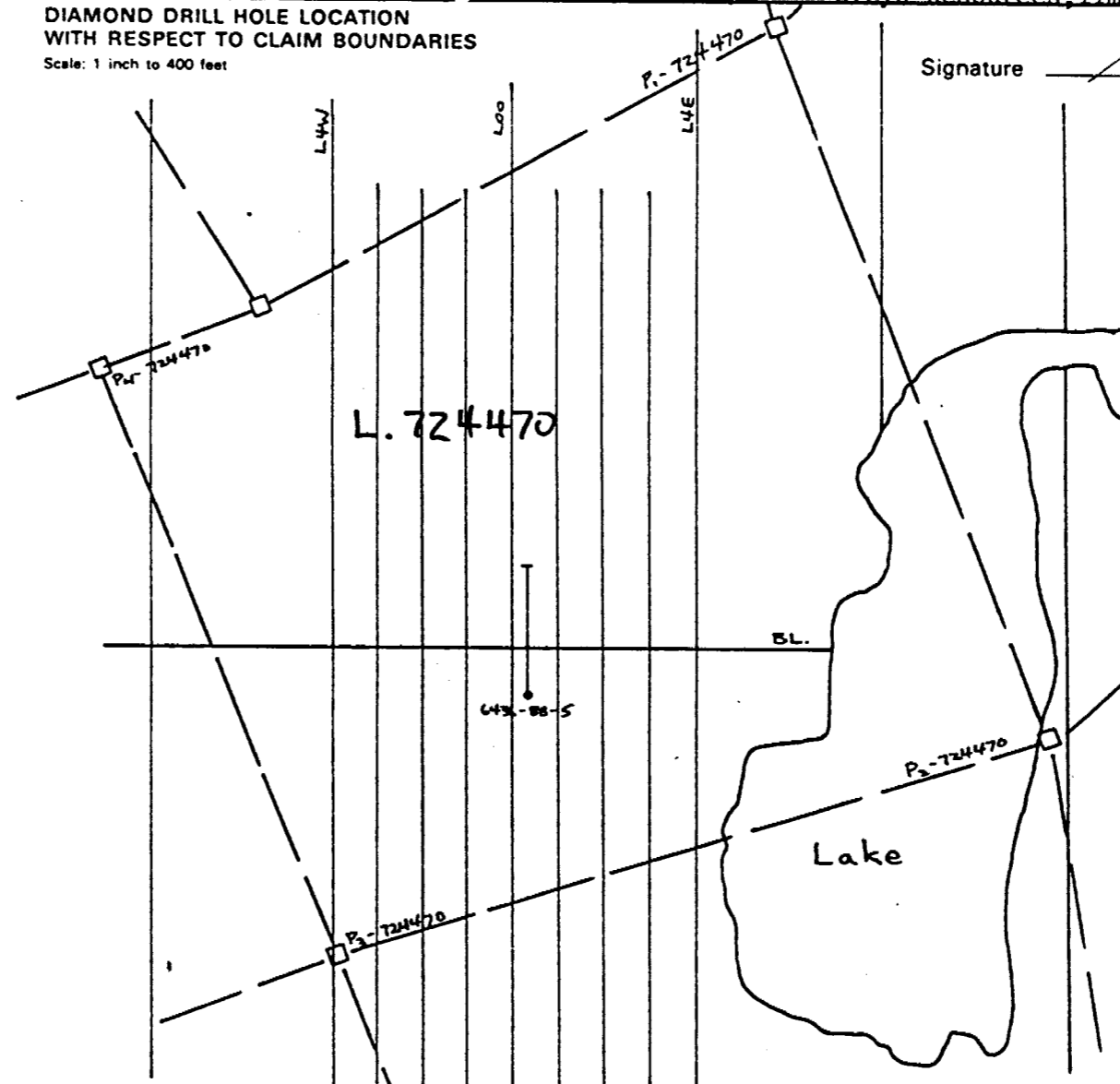
Hole No. 6436 - 88 -5

LOCATION		DIP TEST		LEVEL	HORIZONTAL COMPONENT	DATE STARTED
AREA or TWP Cleaver Twp.	FOOTAGE	ANGLE		Surface	283.00	DATE FINISHED
	0.00	RECORDING	CORRECTED	BQ core - 1 7/16 inch	293.00	LOGGED BY S. Conquer
CLAIM NO L.724470	200.00		-45°	ELEVATION	BEARING 020°	PURPOSE to test gold bearing zone
	407.00		-46°	LATITUDE 0+33E	LENGTH 407.00	TOT. RECOVERY 99.9%
NTS 42 A/ 2 UTM				DEPARTURE 1+05S	CORE LOCATION Cleyo Resources, Timmins	

DIAMOND DRILL HOLE LOCATION SKETCHES CLAIM MAP Scale: 1 inch to 1/2 mile



DIAMOND DRILL HOLE LOCATION WITH RESPECT TO CLAIM BOUNDARIES Scale: 1 inch to 400 feet



Signature *Stephen Conquer*

ONTARIO GEOLOGICAL SURVEY
 ASSESSMENT FILES
 OFFICE
 JUN 27 1988
 RECEIVED

David R. Bell Geological Services Inc.

DIAMOND DRILL HOLE RECORD

Project 6436 - Cleaver Twp.

Company Cleyo Resources Inc.

Hole No. 6436 - 88 - 6

LOCATION	DIP TEST		LEVEL	Surface	HORIZONTAL COMPONENT	DATE STARTED
AREA or TWP. <u>Cleaver Twp.</u>	FOOTAGE	ANGLE			104.00	
		RECORDING				DATE FINISHED
	<u>0.00</u>	CORRECTED		<u>BQ core - 1-7/16 inch</u>	<u>104.00</u>	
CLAIM NO. <u>L.724470</u>	<u>147.00</u>	<u>-45</u>		ELEVATION	BEARING <u>110°</u>	LOGGED BY <u>S. Conquer</u>
		<u>-45</u>		LATITUDE <u>0+90W</u>	LENGTH <u>147.00</u>	PURPOSE <u>to test known gold bearing zone</u>
NTS <u>42 A/ 2 UTM</u>				DEPARTURE <u>0+30S</u>	CORE LOCATION <u>Cleyo Resources, Timmins</u>	TOT. RECOVERY <u>99.9%</u>

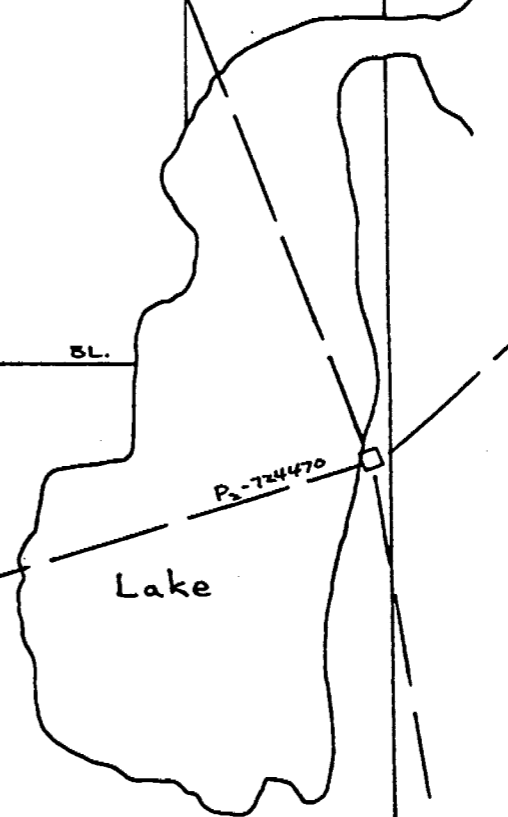
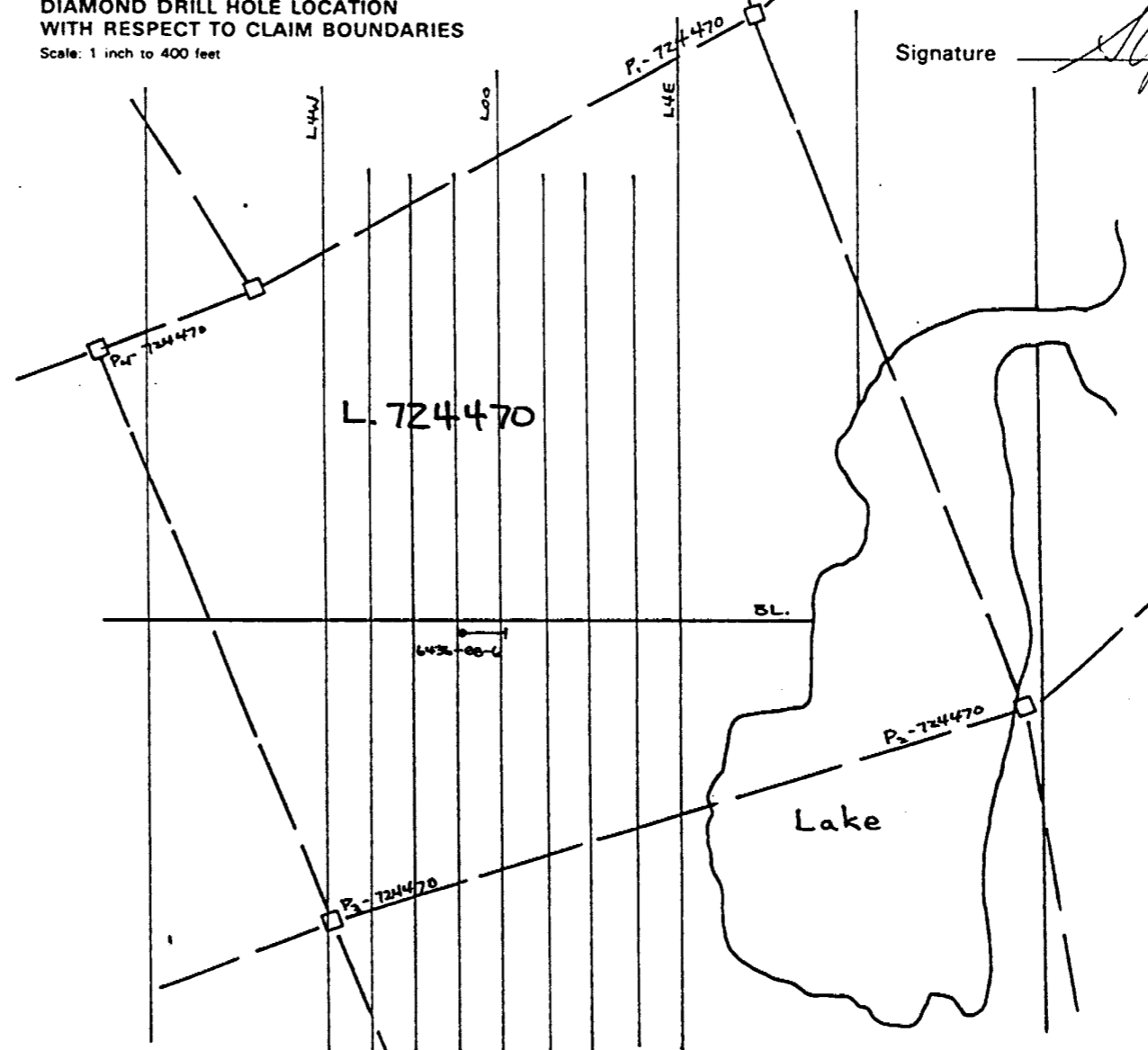
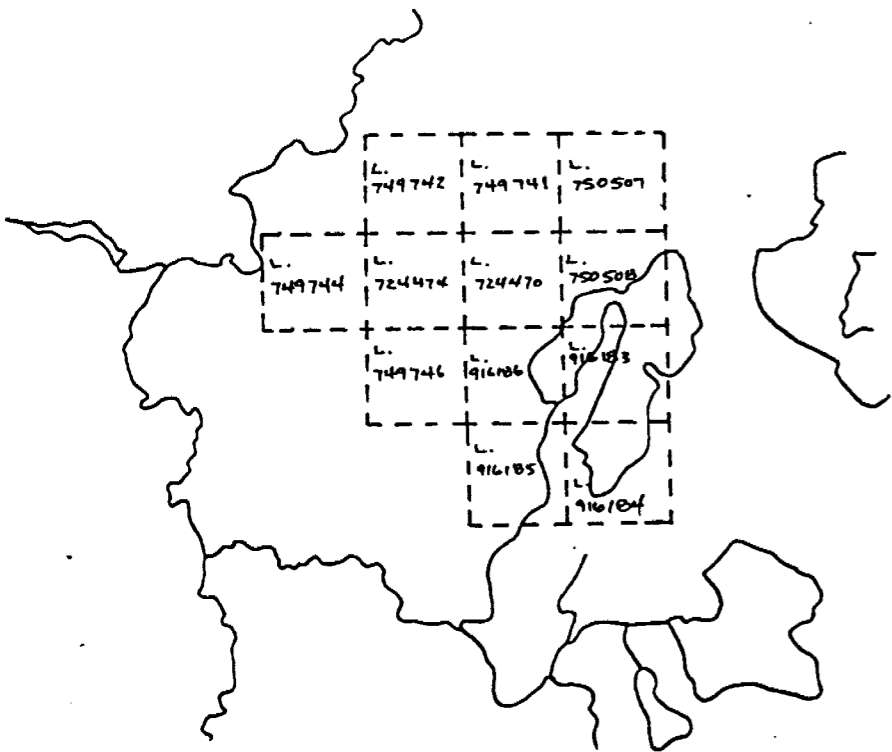
DIAMOND DRILL HOLE LOCATION SKETCHES
CLAIM MAP Scale: 1 inch to 1/2 mile

DIAMOND DRILL HOLE LOCATION
WITH RESPECT TO CLAIM BOUNDARIES
Scale: 1 inch to 400 feet

Signature _____

S. Conquer

ONTARIO GEOLOGICAL SURVEY
 ASSESSMENT FILES
 OFFICE
 JUN 27 1988
 RECEIVED



David R. Bell Geological Services Inc.

DIAMOND DRILL HOLE RECORD

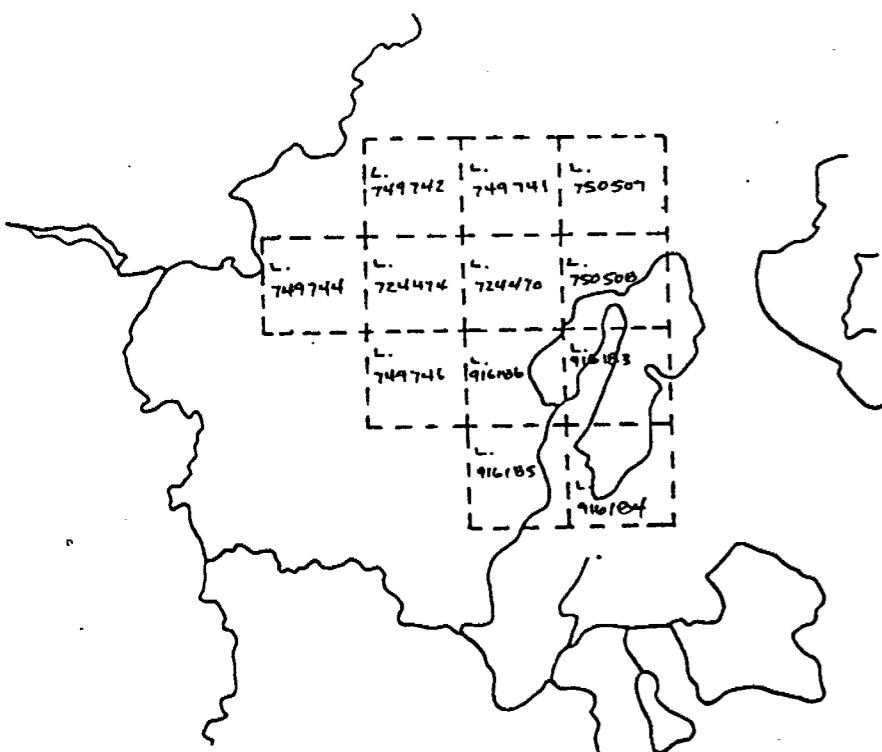
Project 6436 - Cleaver Twp.

Company Cleyo Resources Inc.

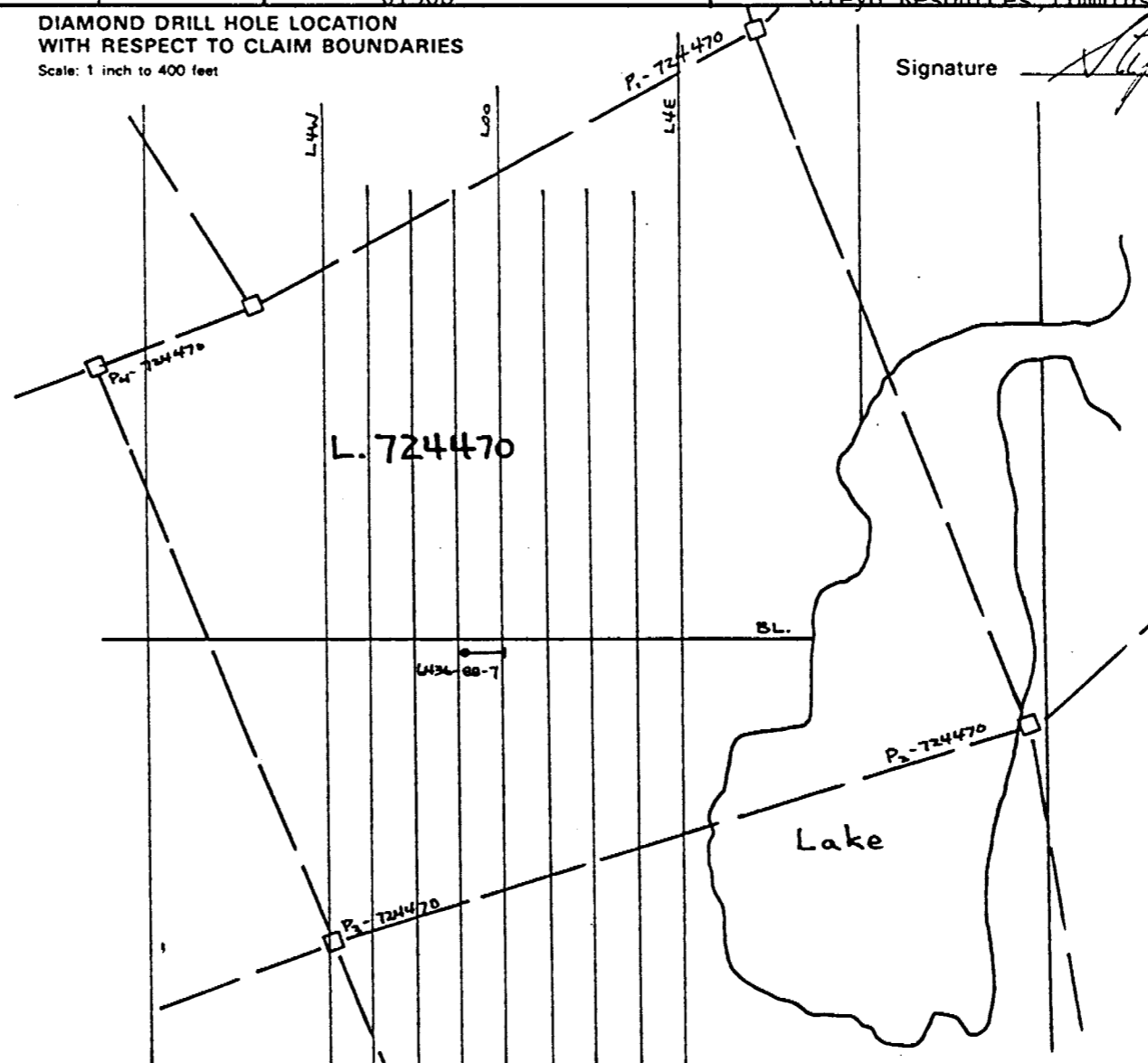
Hole No. 6436 - 88 - 7

LOCATION	DIP TEST		LEVEL	HORIZONTAL COMPONENT	DATE STARTED
AREA of TWP Cleaver Twp.	FOOTAGE	ANGLE		Surface	95.00
		RECORDING	CORRECTED		
CLAIM NO. L. 724470	0.00			ELEVATION	DATE FINISHED
	220.00				
NTS 42 A/2 UTM				LATITUDE	LOGGED BY
			DEPARTURE	LENGTH	PURPOSE
			0+30S	224.00 feet	to test known gold bearing zone
				CORE LOCATION	TOT. RECOVERY
				Cleyo Resources, Timmins	99.9%

DIAMOND DRILL HOLE LOCATION SKETCHES
CLAIM MAP Scale: 1 inch to 1/2 mile



DIAMOND DRILL HOLE LOCATION WITH RESPECT TO CLAIM BOUNDARIES
Scale: 1 inch to 400 feet



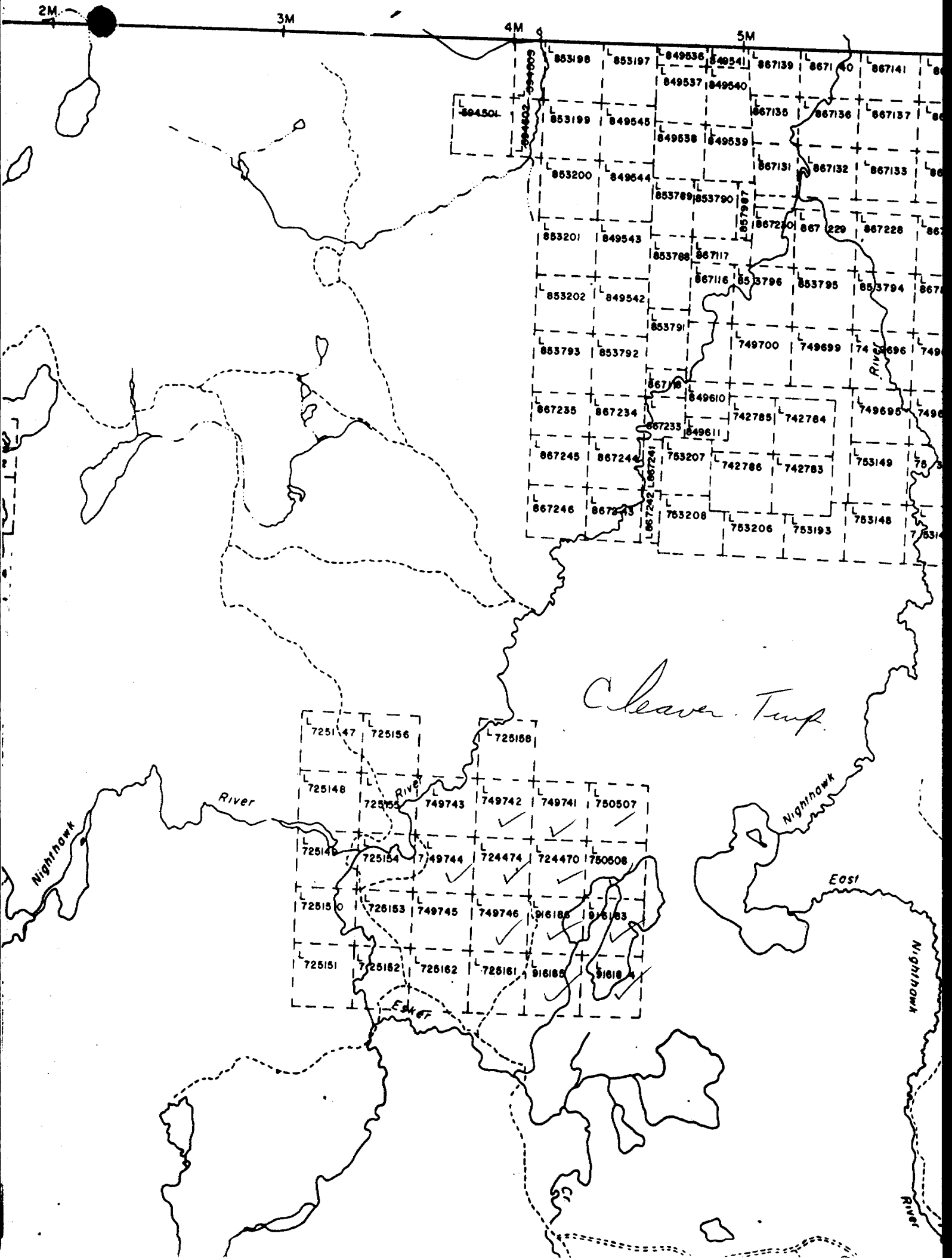
Signature *Stephen Conquer*

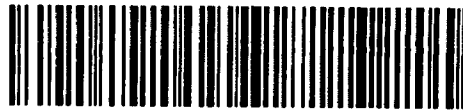
ONTARIO GEOLOGICAL SURVEY
ASSESSMENT FILES
OFFICE

JUN 27 1988

RECEIVED

FALLON TWP.





42A02NW0105 12 CLEAVER

900

Name and Postal Address of Recorded Holder
 Assessment of Cleaver Twp.
 Claimement 1165 Mac Lean Dr., Timmins, Ontario, P4N 1C5
 M. 20931

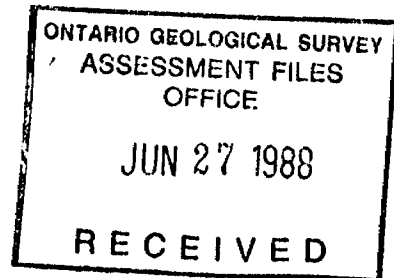
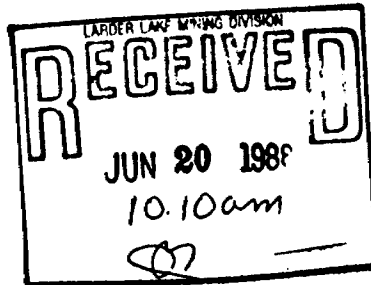
Summary of Work Performance and Distribution of Credits

Total Work Days Cr. claimed 1160	Mining Claim			Work Days Cr.	Mining Claim			Work Days Cr.	Mining Claim		
	Prefix	Number	Work Days Cr.		Prefix	Number	Work Days Cr.		Prefix	Number	Work Days Cr.
for Performance of the following work. (Check one only) <input type="checkbox"/> Manual Work <input type="checkbox"/> Shaft Sinking Drifting or other Lateral Work. <input type="checkbox"/> Compressed Air, other Power driven or mechanical equip. <input type="checkbox"/> Power Stripping <input checked="" type="checkbox"/> Diamond or other Core drilling <input type="checkbox"/> Land Survey	L.	724470	60	L.	916183	180					
		724474	60		916184	180					
		749741	60		916185	160					
		749742	60		916186	160					
		749744	60								
		749746	60								
		750507	60								
		750508	60								

All the work was performed on Mining Claim(s): L. 724470 ✓

Required Information eg: type of equipment, Names, Addresses, etc. (See Table Below)

- ✓ Drilling equipment owned by Mr. Ed Colbert, 167 Lakeshore Lane, Timmins, Ontario. P4N 7A1
- ✓ Drilling conducted during the time period from May 6, 1988 to June 1, 1988.



Date of Report: June 14, 1988
 Recorded Holder or Agent (Signature): *Stephen Conquer*

Certification Verifying Report of Work

I hereby certify that I have a personal and intimate knowledge of the facts set forth in the Report of Work annexed hereto, having performed the work or witnessed same during and/or after its completion and the annexed report is true.

Name and Postal Address of Person Certifying
 Stephen Conquer - David R. Bell Geological Services Inc., P.O. Box 1250, 261 Third Ave.,
 Timmins, Ontario
 Date Certified: June 14, 1988
 Certified by (Signature): *Stephen Conquer*

Table of Information/Attachments Required by the Mining Recorder

Type of Work	Specific Information per type	Other information (Common to 2 or more types)	Attachments
Manual Work.	Nil	Names and addresses of men who performed manual work/operated equipment, together with dates and hours of employment.	Work Sketch: these are required to show the location and extent of work in relation to the nearest claim post.
Shaft Sinking, Drifting or other Lateral Work			
Compressed air, other power driven or mechanical equip.			
Power Stripping	Type of equipment and amount expended. Note: Proof of actual cost must be submitted within 30 days of recording.	Names and addresses of owner or operator together with dates when drilling/stripping done.	Work Sketch (as above) in duplicate
Diamond or other core drilling	Signed core log showing: footage, diameter of core, number and angles of holes.		
Land Survey	Name and address of Ontario land surveyor.	Nil	Nil

David R. Bell Geological Services Inc.

DIAMOND DRILL HOLE RECORD

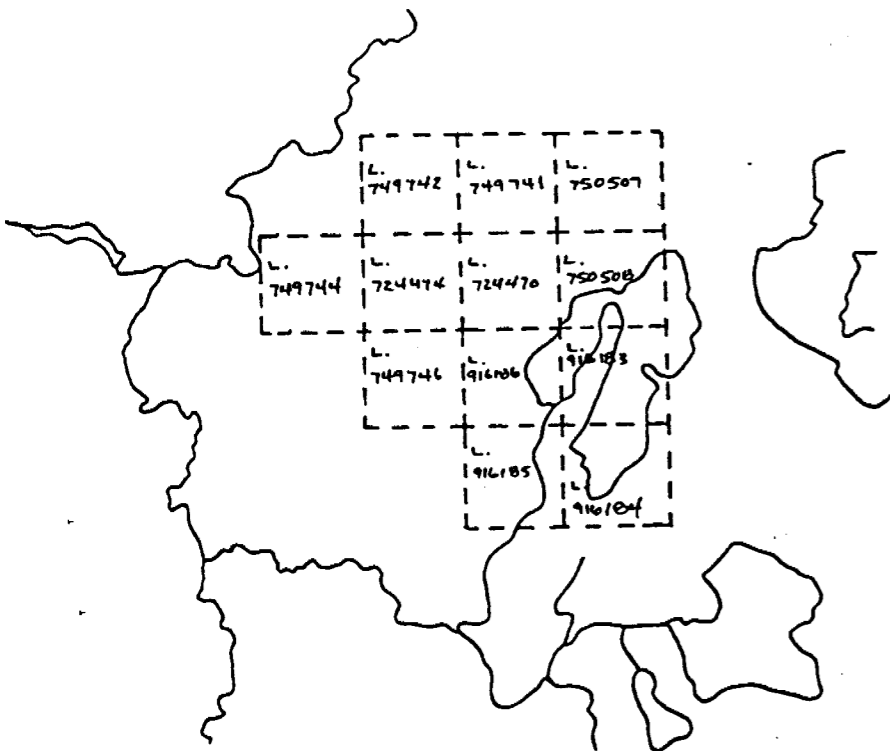
Project 6436 - Cleaver Twp.

Company Cleyo Resources Inc.

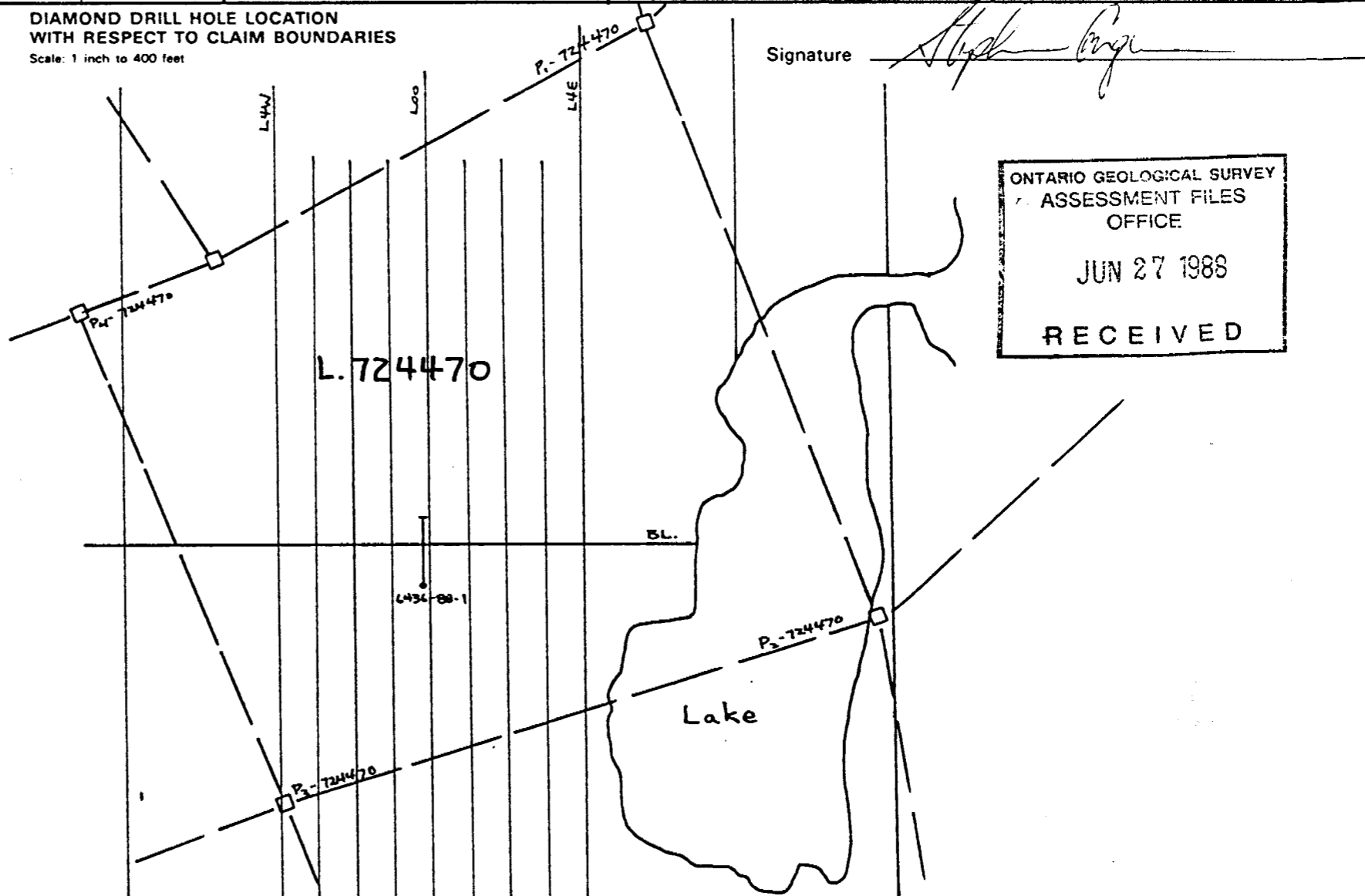
Hole No. 6436 - 88 - 1

LOCATION	DIP TEST		LEVEL Surface	HORIZONTAL COMPONENT 178.00	DATE STARTED May 6, 1988
AREA or TWP. Cleaver Twp.	FOOTAGE	ANGLE		BQ core 1-7/16 inch	DATE FINISHED
		RECORDING	CORRECTED		
CLAIM NO L. 724470	0.00		-45°	ELEVATION	LOGGED BY S. Conquer
	125.00		-44		
	250.00		-43		
NTS 42 A/ 2 UTM				LATITUDE 0+17W	PURPOSE to test known gold bearing zone
				DEPARTURE 1+10S	
				BEARING 020	TOT RECOVERY 99.9%
				LENGTH 253.00	
				CORE LOCATION Cleyo Resources, Timmins	

DIAMOND DRILL HOLE LOCATION SKETCHES
CLAIM MAP Scale: 1 inch to 1/2 mile



DIAMOND DRILL HOLE LOCATION WITH RESPECT TO CLAIM BOUNDARIES
Scale: 1 inch to 400 feet



Signature *Steph Conquer*

ONTARIO GEOLOGICAL SURVEY
ASSESSMENT FILES
OFFICE

JUN 27 1988

RECEIVED