

42A02SW0018 63.3498 BADEN

010

REPORT OF DIAMOND DRILLING

MEAP CG-113

DIAMOND DRILL LOG

63.3498

PROPERTY: MANITOU LAKE GOLD MINES INC.  
 LOCATION: Baden Twp., Larder Lake Mining Division, Ont.  
 Latitude: Claim 422167 Dip: 45°  
 Departure: 325' W. & 200' S. of #1 Post Depth: 402 ft.  
 Elevation: Commenced: June 30, 1977  
 Azimuth: 202° Finished: July 11, 1977

HOLE NUMBER: 18-77

DIP TESTS

Footage Reading Corrected

Drill Contractor: R.M. Ferguson

Logged by: *R. Halet*

SAMPLE NUMBER	DESCRIPTION		
0 - 6.0	Casing.		
6.0 - 21.5	Intermediate volcanics - tuff and breccia.		
21.5 - 29.0	Felsite, white to pink, massive, fine-grained, varying amounts of dark mineral (less than 5%) in grains up to 1/16" (syenite?).		
29.0 - 32.0	Basic dyke, medium grain, dark, massive.		
32.0 - 47.5	Felsite as above.		
47.5 - 52.0	Basic dyke as above, sharp contacts at 45°, several thin calcite veinlets.		
52.0 - 70.7	Felsite - reddish to greenish - quartz stringers 1/4" or more at 55.8, 57.2, 57.8, 59.0, 61.0, 63.8, 64.1.		
70.7 - 72.0	Felsite, buff with numerous quartz stringers and disseminated pyrite. Sample 4029 - 1.3 ft. - 0.015.		
72.0 - 77.3	Same but with less quartz. Sample 4032 - 5.3 ft. - 0.04.		
77.3 - 80.0	Basic dyke.		
80.0 - 83.0	Felsite, buff. Sample 4031 - 3 ft. - 0.01.		
83.0 - 84.0	50% quartz (last 0.5 ft. solid quartz) - fair disseminated pyrite. Sample 4030 - 1.0 ft. - 0.265.		
84.0 - 84.3	Basic dyke - very fine grain.		
84.3 - 90.0	Felsite - Sample 4033 - nil.		
90.0 - 98.0	Mixture of felsite and intermediate volcanics? or dyke material?		
98.0 - 106.0	Felsite - bright red - numerous small white phenocrysts - fine grain.		
106.0 - 113.2	Basic dyke, medium grain - dark green, prominent chilled margins, numerous calcite stringers.		
113.2 - 118.0	Porphyritic felsite, bright red.		
118.0 - 121.1	Basic dyke as above.		
121.1 - 146.8	Red porphyritic felsite.		

SAMPLE NUMBER	DESCRIPTION			
146.8 - 153.4	Basic dyke, medium grain, upper chilled margin 0.4 ft., lower margin schistose.			
153.4 - 158.1	Felsite, reddish.			
158.1 - 160.0	Basic dyke.			
160.0 - 170.7	Felsite, red to buff.			
170.7 - 173.5	Basic dyke.			
173.5 - 205.7	White to dark green massive rock with much chlorite and numerous white phenocrysts in places (green porphyry). 190.5 - 191.0 - quartz. <u>Sample 4034 - 0.01.</u>			
205.7 - 213.6	Basic dyke, prominent chilled margins.			
213.6 - 230.9	Green porphyry as above.			
230.9 - 236.9	Normal reddish felsite, contact sharp - a few quartz veinlets, a little fine pyrite. 231.0 - 236.9 - <u>Sample 4036 - 0.005.</u>			
236.9 - 250.0	Green porphyry.			
250.0 - 251.6	Basic dyke.			
251.6 - 254.3	Green porphyry.			
254.3 - 260.2	Basic Dyke.			
260.2 - 263.8	Green porphyry.			
263.8 - 265.6	Basic dyke.			
265.6 - 276.8	Green porphyry.			
276.8 - 306.0	Basic volcanics?			
306.0 - 339.0	Normal felsite, white to reddish. <u>Sample 4037</u> - 306.0 - 311.0 - Tr. <u>Sample 4038</u> - 316.5 - 318.0 - Tr.			
339.0 - 340.6	Basic dyke.			
340.6 - 342.7	Felsite - splash of chalcopryrite at 341.5. <u>Sample 4039</u> - Tr:			
342.7 - 351.0	Felsite.			
351.0 - 356.1	Basic dyke.			
356.1 - 358.0	Basic dyke with numerous small white phenocrysts.			
358.0 - 363.3	Felsite.			
363.3 - 371.8	Basic dyke.			
371.8 - 380.9	Felsite - splash of chalcopryrite at 375.4.			
380.9 - 389.3	Mixed felsite & dyke rock.			
389.3 - 391.5	Felsite - red.			
391.5 - 400.3	Felsite - buff, becoming red in last foot.			

*Ratall*

SAMPLE NUMBER	DESCRIPTION			
	400.3 - 400.6 Basic dyke. 400.6 - 401.1 Red felsite. 401.1 - 402.1 Basic dyke. End of Hole.			

*R. H. ...*

#4 POST.

#1 POST

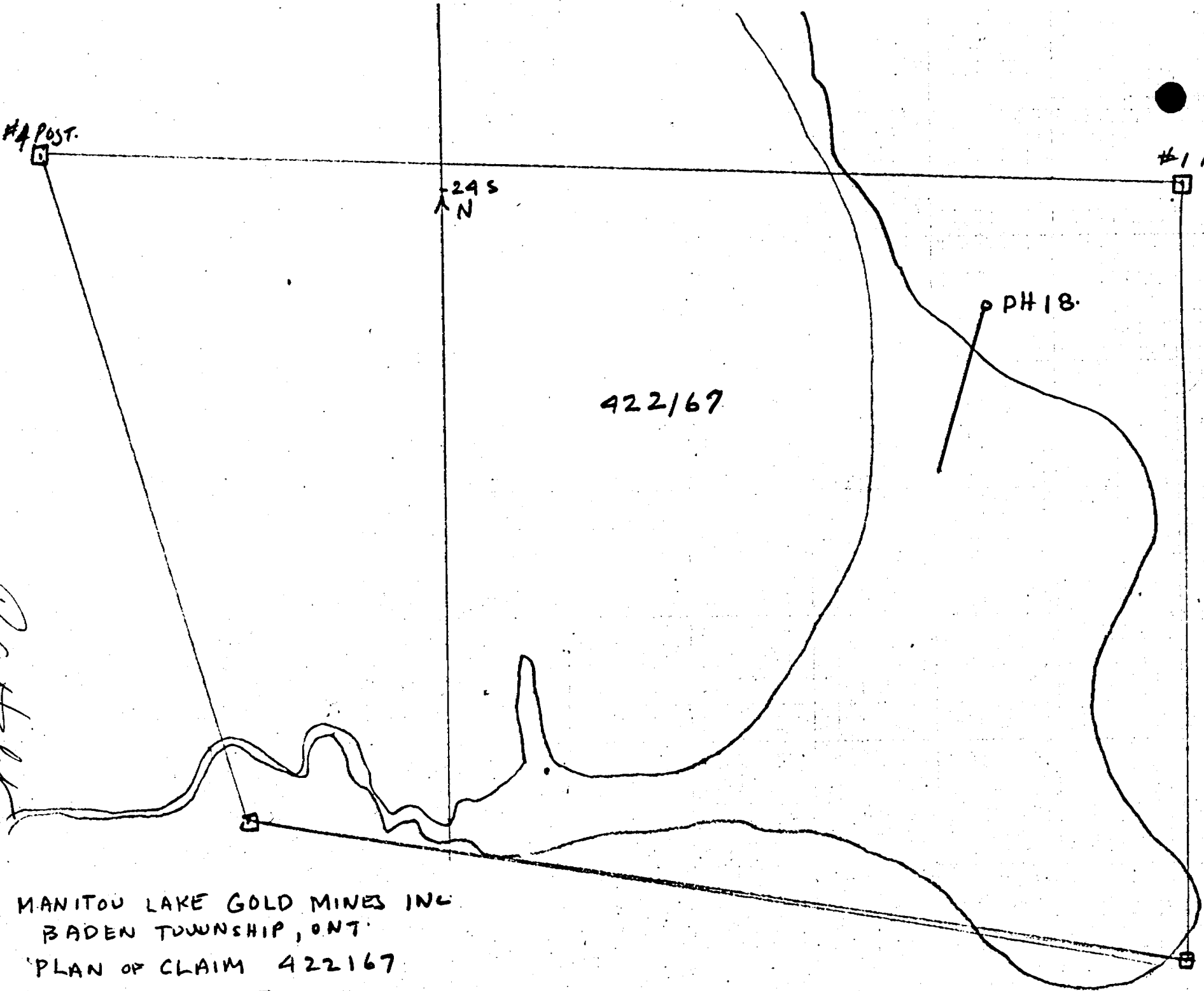
29 S  
N

PH 18.

422/67

*Cartell*

MANITOU LAKE GOLD MINES INC  
BADEN TOWNSHIP, ONT.  
PLAN OF CLAIM 422167  
1 INCH = 200 FT.




# DIAMOND DRILL LOG

HOLES 15421  
CLAIM L401361

PROPERTY: MANITOU LAKE GOLD MINES INC.  
 LOCATION: Baden Twp., Larder Lake Mining Division, Ont.  
 Latitude: Claim 401361 Dip: 45°  
 Departure: 290' N of #3 Post Footage  
 400' E of #3 " Depth: 174 ft.  
 Elevation: Commenced: June 6, 1977  
 Azimuth: 90° astronomic Finished: June 13, 1977

HOLE NUMBER: 15-77  
 DIP TESTS  
 Reading Corrected  
 Drill Contractor: R.M. Ferguson  
 Logged by: R. A. Halet

SAMPLE NUMBER	DESCRIPTION		
0 - 24.0	Casing - 8 ft. is above ground.		
24.0 - 108.5	Massive felsite - hard - medium grey - some red alteration throughout. At 88.5 - red alteration, much epidote & two veinlets of quartz-calcite & a little pyrite.		
108.5 - 174.0	Diabase (Ronda Dyke). Fine grained near margin; rest is medium grain, dark, massive. 138.0 - asbestos veinlet 167.0 - 2" veinlet quartz calcite 171.2 - asbestos (slip fibre) ground up.		
174.0	End of hole.		
This hole has encountered a fault zone with much slip fibre asbestos which prevented further drilling.			
			

# DIAMOND DRILL LOG

**PROPERTY:** MANITOU LAKE GOLD MINES INC.

**HOLE NUMBER:** 21-77

**LOCATION:** Baden Township, Larder Lake Mining Division, Ontario  
Claim #401361 - 500'S and 800'W of No. 1 Post.

**DIP TESTS**

<b>Latitude:</b>	Dip: 45°	Footage	Reading	Corrected
<b>Departure:</b>	Depth: 280 ft.	Bearing: 270		
<b>Elevation:</b>	Commenced: Sept. 16, 1977	Core: IAX - dia. 1 5/16"		
<b>Azimuth:</b>	Finished: Oct. 11, 1977	Drill Contractor: R.M. Ferguson		
		Logged by: R. A. Halet		

SAMPLE NUMBER	DESCRIPTION		
	0 - 12 Casing		
	12 - 32 Volcanics - andesitic		
	32 - 204.8 Diabase (Ronda Dyke)		
	204.8 - 246.2 Andesite - last 4 ft. altered		
4067	246.2 - 246.7 Quartz and felsite not mineralized - trace of gold		
4068	246.7 - 247.5 Felsite - trace of gold		
	247.5 - 265 Felsite - hard, massive, very fine grained		
	265 - 271 Massive greenstone		
	271 - 280 Porphyritic andesite		

*R. A. Halet*

#4-401361

NO 3 POST-MR81186  
(SURVEYED CLAIM)

#1 POST  
401361

BASE LINE  
600 FT.

N.M.T.

DH-21

120'

800'

600'

#2  
401361

DH  
15  
20

400'

500'

401361  
401358

MANITOU LAKE GOLD MINES INC  
BADEN TOWNSHIP ONT  
PLAN OF CLAIM 401361

1 INCH = 200 FT.

*R. Halet* RAHALET-1977

#3-40136

290'

